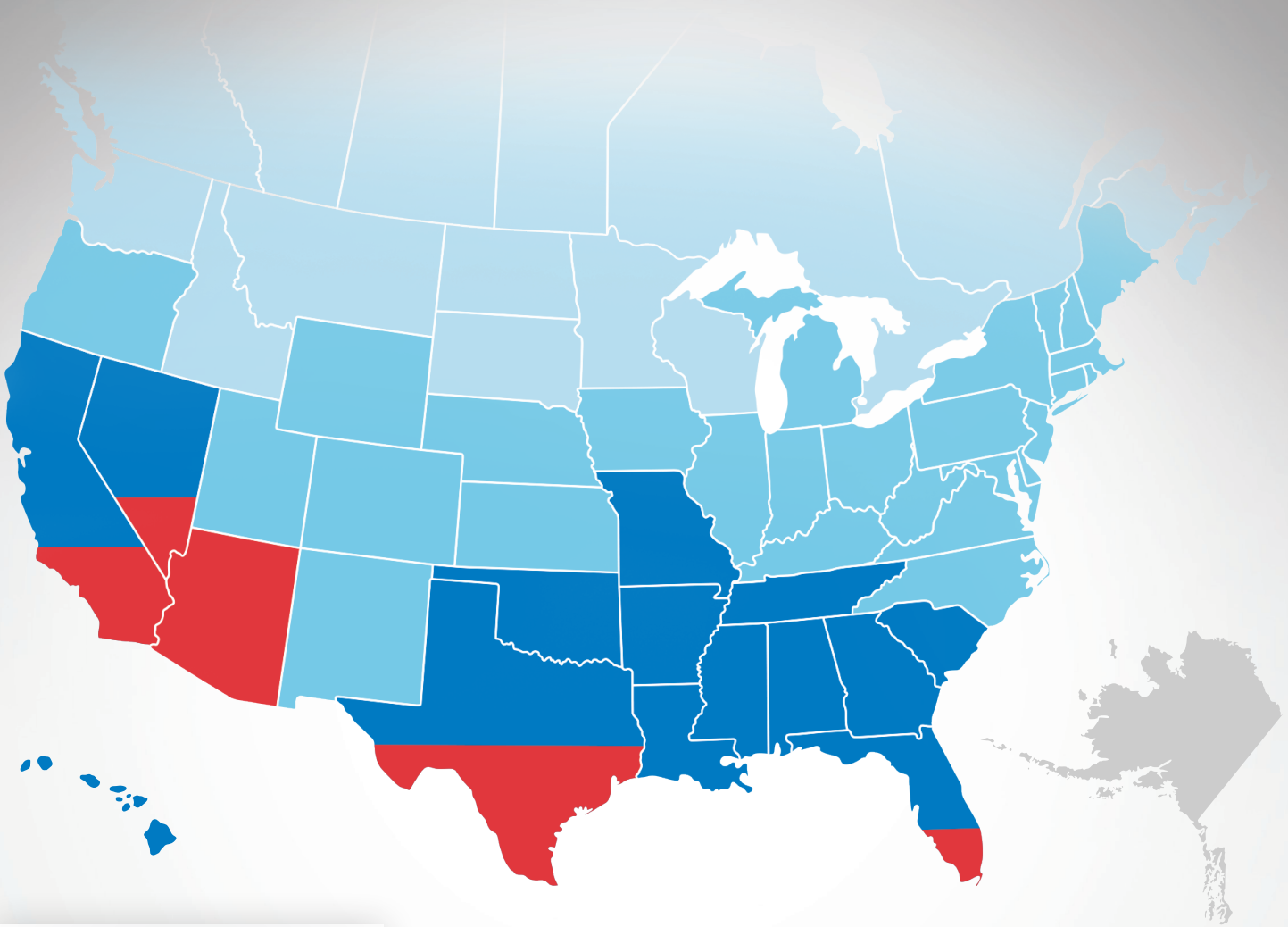








COOL ZONE BUS SYSTEM PACKAGE GUIDE

Every climate has an ideal A/C system configuration.
Find out what's best for your region.

This guide applies to buses with up to 78 seats.

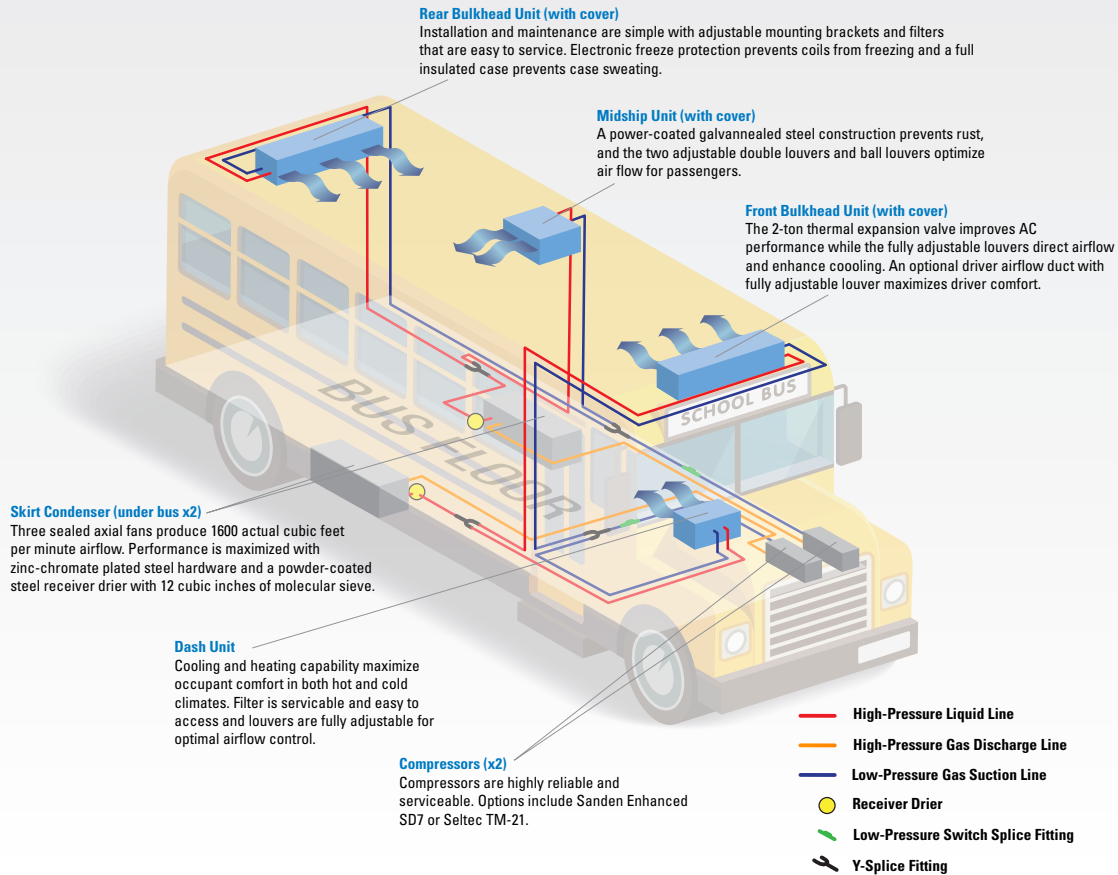


-  4-unit configuration
-  3-unit configuration
-  2-unit configuration
-  1-unit configuration

Welcome to the Cool Zone®

When it comes to choosing an air conditioning system for your bus fleet, quality, reliability and performance are critical. Bergstrom's new Cool Zone™ bus air conditioning system is a solution you can count on. The system consists of front and rear bulkhead units, a dual fan ceiling mount unit with a two-fan or three-fan condenser. The result? Cool Zone is so effective that it cools the bus down quickly and efficiently.

COOL ZONE BUS PACKAGE SYSTEM GUIDE



BEFORE YOU DECIDE WHAT AC SYSTEM IS BEST, ENTER THE COOL ZONE™ BY BERGSTROM.

Model	Front Bulkhead	Dash Unit	Midship	Rear Bulkhead	Skirt Condenser
Dimensions (mm)	1200 W x 353 H x 199 D	371 W x 556 H x 290 D	776 W x 370 H x 665 D	1200 W x 353 H x 199 D	1299 W x 270 H x 407 D
Dimensions (in.)	47.24 W x 13.9 H x 7.83 D	14.6 W x 21.89 H x 11.42 D	30.55 W x 14.57 H x 26.18 D	47.24 W x 13.9 H x 7.83 D	51.14 W x 10.63 H x 16.02 D

4-Unit System | Up to 136,000 BTU

This system includes a Front Bulkhead Unit, Dash Unit, Midship Unit, Rear Bulkhead Unit and 2 Skirt Condensers.

3-Unit System | Up to 126,000 BTU

One-way systems include a Front Bulkhead Unit, Rear Bulkhead Unit and a Dash Unit. Two-way systems include a Front Bulkhead Unit, Rear Bulkhead Unit and a Midship Unit. Multiple midship options are available for buses which cannot accommodate bulkhead units. In addition, this system has two skirt condensers.

2-Unit System | Up to 120,000 BTU

This system include a Front Bulkhead Unit and Rear Bulkhead Unit. In addition, this system has one skirt condenser.

Suggested Compressor: Sanden SD7 Enhanced 12V

Warranty is a 3-year unlimited mileage limited warranty

Various Bus System Packages Available

System packages can consist of any combination of bus systems. Factors that determine the different types of bus system packages can include the size of the bus, state regulations and/or average weather temperatures in the different regions of the U.S.

