

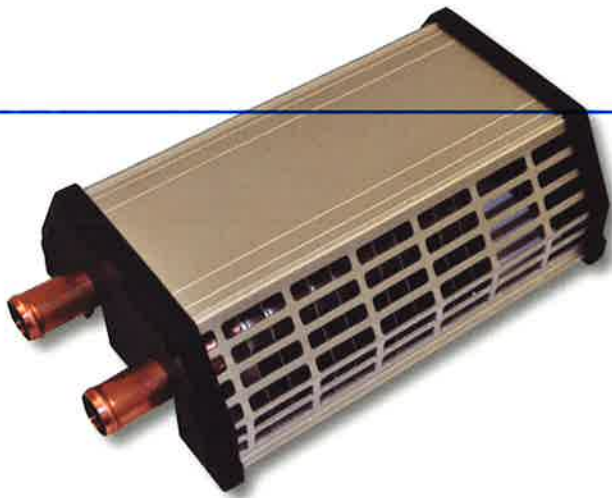


Convector **P90**

Highly efficient and comfortable bus heating

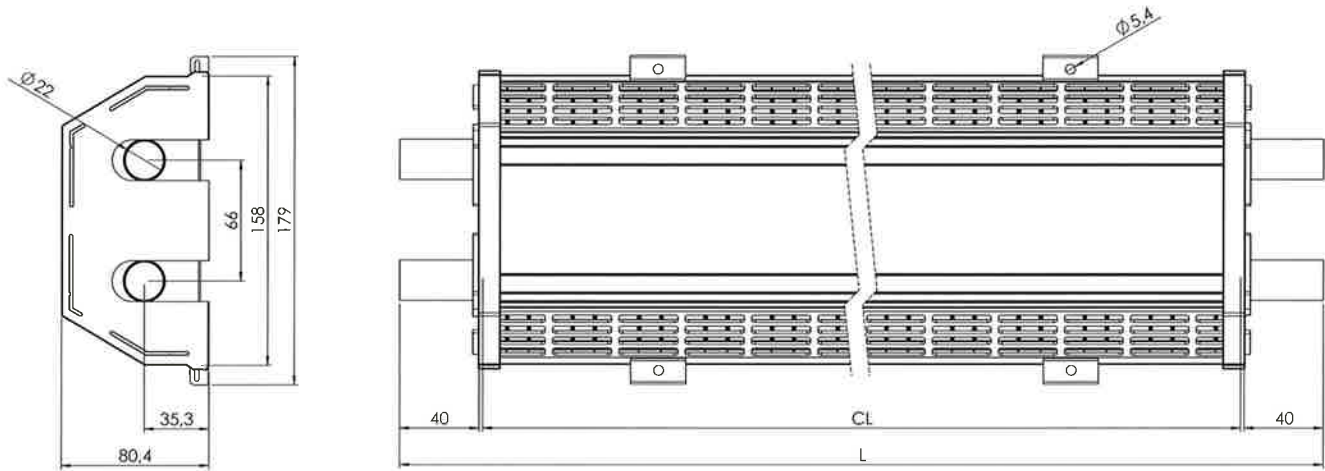
MCC Convector P90 is based on a twin copper pipe system that supplies efficient heat in a space saving design. Can be used as a standalone unit or part of a complete heating

system. Transition pieces are available to accommodate bulkheads, wheel wells and doors.



Features

- Suitable for heating buses, minivans, caravans, mobile homes and use in marine applications.
- Designed for vehicles with water/glycol heating systems.
- Quiet and draft-free heating.
- Maintenance-free.
- Robust design.
- Twin pipe design for optimized heat output.



Dimensions in mm

Technical Data

Heat output	1880 Btu/hr (0.55 kW) Q_{60}^*	3347 Btu/hr (0.98 kW) Q_{100}^*
Piping	Copper Ø 0.8" (22 mm)	
Weight	25 lbs/ft (3.14 kg/m)	
Maximum length	197" (5 m)	
Color	Silver anodized aluminium	
	Please contact your MCC representative for more details	

* The Q_x value stands for the power in kW emitted from a unit length (1 m) of the convector at a temperature difference between coolant inlet and room air equal to the subscript (x).

