

# Bill of Materials Listing

TransArctic Canada Inc.

4/17/2017  
Page 1 of 1

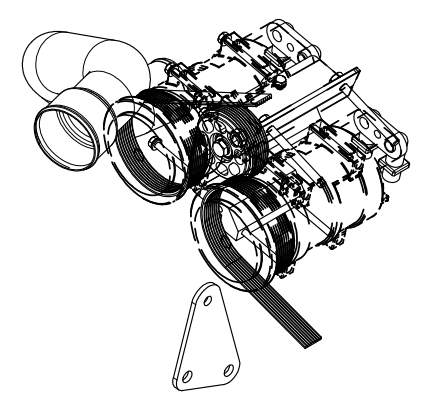
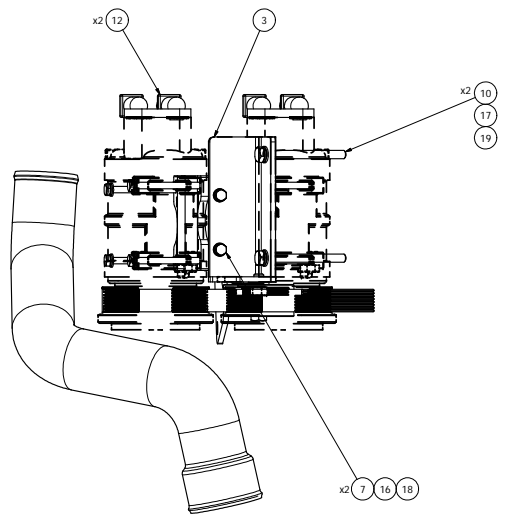
Product Number	Description	Date	Weight	Uof M	Yield
Line    Component    Prod#	Description	Bin                    Unit	Qty		
<b>KMC62678</b>	<b>Mt Kit, ISB, 6.7L, C2, 2 TM-21, '10</b>		<b>5/17/2011</b>	<b>38.94</b>	<b>0</b>
10	BEL82705		Belt, 8gr, 2705mm (106.5") (5081065)	each	1
20	BMC67026		Bkt, Support, RAD, F400, TH Cum C2, BLK	each	1
30	BMC67081		Bkt, Main, Weldmt,C2, TM-21,'10	each	1
40	BMN80034		Bkt, Comp, Upper, CE300	each	1
50	BMN80035		Bkt, Comp, Lower, CE300	each	1
60	BMS16022		Bkt, TM-16 Spacer Plate	each	2
90	FTS10198		Fitting, Manifold,GMpadMount,VOR,dwn,MIO	each	2
100	PUL80089		Pulley, Idler, Backside,P8,86.4d (89106)	each	1
110	SLV17012		Sleeve, Pulley, 16.9o x 22.23mm x 12.32i	each	1
120	TUS03036		Tube, Stl, 3"/ 3.5" O.D, C2, 2 TM-21	each	1
130	KBC62678		Bag Kit, Fasteners, KMC62678	each	1

# Bill of Materials Listing

TransArctic Canada Inc.

4/17/2017  
Page 1 of 1

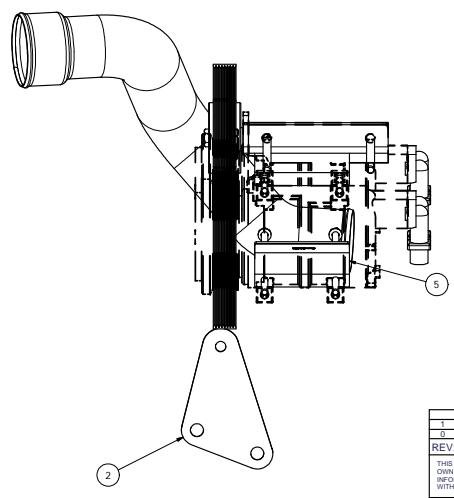
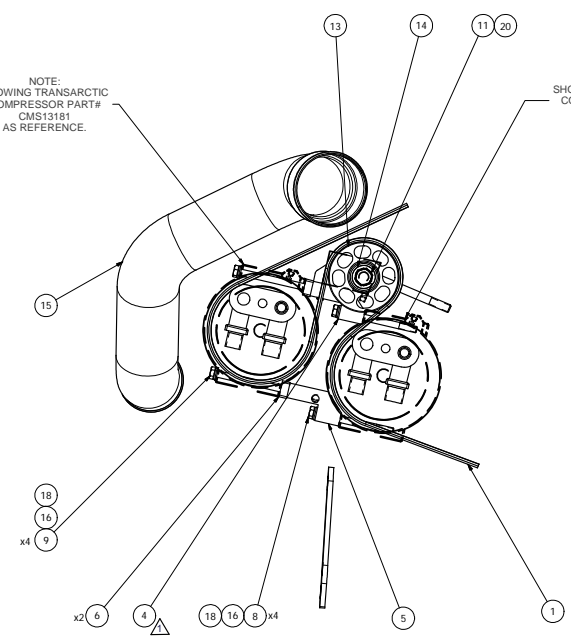
Product Number	Description	Date	Weight	Uof M	Yield
Line    Component    Prod#	Description	Bin                    Unit	Qty		
<b>KBC62678</b>	<b>Bag Kit, Fasteners, KMC62678</b>	<b>6/6/2011</b>	<b>1.58</b>		<b>0</b>
10	BTC08030				
	Bolt, Hex, 8 x 1.25 x 30mm, 10.9, Plt,FT	each	2		
20	BTC08100				
	Bolt, Hex, 8 x 1.25 x 100mm, 10.9, Plt	each	4		
30	BTC08140				
	Bolt, Hex, 8 x 1.25 x 140mm, 10.9, Plt	each	4		
40	BTC10110				
	Bolt, Hex, 10 x 1.5 x 110mm, 10.9, Plt	each	2		
50	BTC12050				
	Bolt, Hex, 12 x 1.75 x 50mm, 10.9,Plt	each	1		
60	WFA08000				
	Washer, Flat, 8mm, 8.8, Plt	each	10		
70	WFA10000				
	Washer, Flat, 10mm, 8.8, Plt	each	2		
80	WLA08000				
	Washer, Lock, 8mm, 8.8, Plt	each	10		
90	WLA10000				
	Washer, Lock, 10mm, 8.8, Plt	each	2		
100	WLA12000				
	Washer, Lock, 12mm, 8.8, Plt	each	1		



ISOMETRIC VIEW

NOTE:  
SHOWING TRANSARCTIC  
COMPRESSOR PART#  
CMS13181  
AS REFERENCE.

NOTE:  
SHOWING TRANSARCTIC  
COMPRESSOR PART#  
CMS13181  
AS REFERENCE.



NOTES:  
1) USE SERVICABLE THREADLOCKER ON ALL FASTENERS TO ENGINE  
COMPONENTS AND TORQUE ALL BOLTS TO S.A.E. SPECIFICATIONS.  
2) SEE 'TRANSARCTIC A/C COMPRESSOR MOUNT INSTALLATION  
DISCLAIMER'.

ITEM	QTY	U/M	PART NUMBER	DESCRIPTION
20	1	EACH	WLA12000	WASHER, LOCK, 12mm, 8.8, PLT
19	2	EACH	WLA10000	WASHER, LOCK, 10mm, 8.8, PLT
18	10	EACH	WFA08000	WASHER, FLAT, 10mm, 8.8, PLT
17	2	EACH	WFA10000	WASHER, FLAT, 10mm, 8.8, PLT
16	10	EACH	WFA08000	WASHER, FLAT, 8mm, 8.8, PLT
15	1	EACH	TUS03036	TUBE, STL, 3/7 3.5" O.D, C2, 2 TM-21
14	1	EACH	SLV17012	SLEEVE, PULLEY, 16.9x x 22.23 mm x12.19l
13	1	EACH	PUL80089	PULLEY, IDLER, BACKSIDE, P8, S6-4D, 39W
12	2	EACH	FIS10198	FITTING, MANIFOLD, COMPADJUNT, VOR, DWN, MIO
11	1	EACH	BTC12050	BOLT, HEX, 12 x 1.75 x 50mm, 10.9, PLT
10	2	EACH	BTC10110	BOLT, HEX, 10 x 1.5 x 110mm, 10.9, PLT
9	4	EACH	BTC08140	BOLT, HEX, 8 x 1.25 x 140mm, 10.9, PLT
8	4	EACH	BTC08100	BOLT, HEX, 8 x 1.25 x 100mm, 10.9, PLT
7	2	EACH	BTC08030	BOLT, HEX, 8 x 1.25 x 30mm, 10.9, PLT
6	2	EACH	BMS16022	BKT, TM-16, SPACER PLATE
5	1	EACH	BMN80035	BKT, COMP, LOWER, FE300
4	1	EACH	BMN80034	BKT, COMP, UPPER, FE300
3	1	EACH	BMC67081	BKT, MAIN, WELDMT, C2, TM-21, '10
2	1	EACH	BMC67026	BKT, SUPPORT, RAD, TH CUMMINS, BLK
1	1	EACH	BEL2705	BELT, 6gr, 2705mm, (106.5")(S0810A5)

BILL OF MATERIALS  
**TRANSARCTIC INC.**

1	UPDATED NOTE: REVISED BMN80031	4/17/2017	JRR
0	RELEASED TO PRODUCTION	6/3/2011	JRR
REV	DESCRIPTION:	DATE:	BY:
			JRR
			GA
			JRR
			MFG
			Ron Ingram
			APPROVED
			Dale Mason

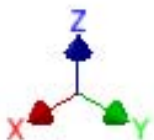
TITLE  
MT. KIT, ISB, 6.7L, C2, 2 TM-21, '10  
SIZE D  
DWG NO KMC62678  
REV 1

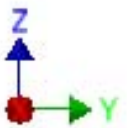
UNSPECIFIED TOLERANCES: ALL DIMS  
ONE DECIMAL PLACE (.X) .XX .XXX  
TWO DECIMAL PLACE (.XX) .XXX .XXXX  
THREE DECIMAL PLACE (.XXX) .XXXX .XXXXX  
FRACTIONAL: 1/16" ANGULAR: ± .01°

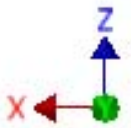


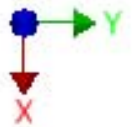
THIRD ANGLE PROJECTION  
DRAWING UNIT OF MEASURE: MM (INCH)

SCALE 1:3 SHEET 1 OF 1









## **TransArctic A/C Compressor Mount Installation Disclaimer**

All compressor mounts should be installed by qualified and trained personnel using proper tools and equipment in safe working conditions following industry standard guidelines for motor vehicle service and repair.

The installer of any compressor mount purchased from TransArctic must undertake all responsibility of issues arising from that compressor bracket being installed on any vehicle. As well as insure that a **proper and sufficient ground** is established between the compressors' clutches and the vehicle's engine. Mount functionality, operation and durability can all be compromised by an incompetent installation.

Due to the many different situations, parameters and application criteria, which are beyond the compressor mount manufacturer's control, TransArctic does not warrant design, durability, or operational functionality of any compressor mount improperly installed by another party.

**With no implied guarantees it is the mount installer's strict responsibility to determine safety and functionality, of the compressor mount, at the time of installation.**

Please contact TransArctic with any issue arising from installation so we may better improve the product. If you have any reservations about the compressor mount integrity contact TransArctic immediately at 1-877-COLD-AIR.

**Mark OEM tensioner location**

**Install Kit**

**Check for Interferences**

**Check to ensure that the proper OEM tensioner orientation is maintained**

**Run engine with A/C system engaged for at least 10 minutes to run in belt**

**Check OEM tensioner orientation and adjust as required**

### **Responsabilidad limitada de TransArctic en la instalación del soporte del compresor**

Todos los soportes de los compresores deben ser instalados por personas calificadas y entrenadas, usando para ello los equipos y herramientas necesarios para esta labor en buenas condiciones y según las normas y guías para el servicio y/o reparación de motores de vehículos.

El instalador de los soportes comprados en TransArctic asume toda la responsabilidad de cualquier problema que surga en el soporte del compresor al vehículo; de igual manera es responsable que el cable a tierra sea conectado entre el embrague del compresor y el motor del vehículo.

Se advierte que el buen funcionamiento y la durabilidad del soporte pueden ser comprometidos por defectos en su instalación.

Debido a las diversas situaciones que se puedan presentar fuera del control del fabricante, TransArctic no garantiza el diseño, la durabilidad o el correcto funcionamiento de cualquier equipo inapropiadamente instalado por terceros.

**Esta sobreentendido que el Instalador del montaje del compresor es estrictamente responsable de la seguridad y funcionamiento del equipo en el momento de la instalación.**

Si tuviera algún problema o duda acerca de la instalación del soporte del compresor pongase en contacto inmediatamente con TransArctic al teléfono 1-877-COLD-AIR de modo que podamos mejorar nuestro producto.

**Note la ubicación del medidor de tensión OEM**

**Instale el equipo**

**Controlar si hay interferencias.**

**Asegurese que el medidor de tensión mantenga la orientación justa.**

**Encienda el motor por lo menos 10 minutos con el sistema A/C enganchado para que la correa corra**

**Controle la orientación justa del medidor de tensión y ajuste a las condiciones requeridas del fabricante**