

Bill of Materials Listing

TransArctic Canada Inc.

9/14/2017
Page 1 of 1

Product Number		Description	Bin	Date	Weight	Uof M	Yield
Line	Component Prod#	Description		Unit	Qty		
KMC82461		Mt Kit, ISC, BBRE, O5K, 2B, 8" Crank,'07		10/19/2007	231.73		0
5	BEL22592	Belt, B gr, 2591mm (102") (BP99)		each	2		
10	KBB84161	Mt Kit, Base, Transit, A3RE, '07		each	1		
20	KKT82461	Kit, Platform, O5K, '07		each	1		
30	KPC84161	Kit, Pulley, ISC, A3RE, '07		each	1		
40	KAC84161	Kit, Alt. 24V, ISC, BBRE, '07		each	1		

Bill of Materials Listing

TransArctic Canada Inc.

9/14/2017
Page 1 of 1

Product Number	Description	Date	Weight	Uof M	Yield
Line Component Prod#	Description	Bin Unit	Qty		
KBB84161	Mt Kit, Base, Transit, A3RE, '07	8/31/2007	161.81		0
20 BMC83019	Bkt, Gusset, Bumper, ISC, BBRE, '07	each	1		
30 BMC83020	Bkt, Dampner, ISC, BBRE, '07	each	1		
40 BMC83021	Bkt, Comp, Frt, ISC, BBRE, '07	each	1		
50 BMC83022	Bkt, Comp, Rear, ISC, BBRE, '07	each	1		
60 BMC83023	Bkt, Gusset, Idler, ISC, BBRE, '07	each	1		
70 BMC83024	Bkt, Main, Idler, ISC, BBRE, '07	each	1		
80 BMC83026	Bkt, Sprt, Bump, Rear, ISC, BBRE, '07	each	1		
90 BMC83027	Bkt, Sprt, Bump, Side, ISC, BBRE, '07	each	1		
100 BMC83028	Bkt, Tray, ISC, BBRE, '07	each	1		
110 BMC83029	Bkt, Shift, Tank, Weldmt, ISC, BBRE, '07	each	1		
115 BMC83031	Bkt, Slide, Block, Idler, BBRE	each	1		
120 BMN80008	Vibration Isolator, Bar, 16.50 x 2 x 1.50	each	2		
130 BMN80009	Bkt, Main, Base Pl, IC, RE300	each	1		
160 BMN80025	Bkt, Back, PL, Slide, IC, RE300	each	1		
170 PUA05012	Pulley, Assy, Idler, B/BX gr, 5", STL, Plt	each	1		
180 PUA05001	Pulley, Assy, Idler, B/S, 5", Stl, Plt	each	1		
220 SCD32812	Spacer, Step, Drl, 32.8mm x 50.8o x 12.3i	each	1		
225 SPC19010	Spacer, Col, Drl, 19mm x 28.58o x 10.32i	each	2		
240 SCD48012	Spacer, Col, Drl, 48 mm x 34.9o x 12.3i	each	1		
250 SLV17012	Sleeve, Pulley, 16.9o x 22.23mm x 12.32i	each	2		
280 KBT84161	Bag Kit, Fasteners, KBB84161/64161	each	1		

PUA06001 changed to PUA05001 - MAY-24-12 - VAL

Bill of Materials Listing

6/23/2009

TransArctic Canada Inc.

Page 1 of 1

Product Number	Description	Date	Weight	Uof M	Yield
Line Component Prod#	Description	Bin Unit	Qty		
KBT84161	Bag Kit, Fasteners, KBB84161		8/29/2007	5.30	0
10 BTC08020	Bolt, Hex, 8 x 1.25 x 20mm, 10.9, Plt	each	2		
20 BTC08035	Bolt, Hex, 8 x 1.25 x 35mm, 10.9, Plt,FT	each	1		
50 BTC12040	Bolt, Hex, 12 x 1.75 x 40mm, 10.9,Plt,FT	each	10		
60 BTC12050	Bolt, Hex, 12 x 1.75 x 50mm, 10.9,Plt	each	1		
70 BTC12060	Bolt, Hex, 12 x 1.75 x 60mm, 10.9,Plt,FT	each	1		
100 BTC12100	Bolt, Hex, 12 x 1.75 x 100mm, 10.9, Plt	each	2		
105 BTP08653	Bolt, Hex, 1/2-13unc, 6.5", 5, Plt, FT	each	1		
115 BTQ06200	Bolt, Hex, 3/8-16unc, 2.0", 8, Plt	each	2		
120 BTQ08126	Bolt, Hex, 1/2-20unf, 1.25", 8, Plt	each	12		
135 BTQ08200	Bolt, Hex, 1/2-13unc, 2.0", 8, Plt	each	3		
160 CSF06075	Capscrew, FH, 3/8-16 x .75", Alloy, Plt	each	2		
170 NTA08000	Nut, Hex, 8 x 1.25, 8.8, Plt	each	3		
190 NTA12000	Nut, Hex, 12 x 1.75, 8.8, Plt	each	13		
200 NTP06000	Nut, Hex, 3/8-16unc, 5, Plt	each	2		
230 WFA08000	Washer, Flat, 8mm, 8.8, Plt	each	4		
250 WFA12000	Washer, Flat, 12mm, 8.8, Plt	each	20		
270 WFAQ08000	Washer, Flat, 1/2", 8, Plt	each	15		
280 WLA08000	Washer, Lock, 8mm, 8.8, Plt	each	3		
300 WLA12000	Washer, Lock, 12mm, 8.8, Plt	each	14		
330 WLQ08000	Washer, Lock, 1/2", 8, Plt	each	13		

Bill of Materials Listing

TransArctic Canada Inc.

12/4/2007

Page 1 of 1

Product Number		Description	Bin	Date	Weight	Uof M	Yield
Line	Component Prod#	Description		Unit	Qty		
KKT82461		Mt Kit, Transit, O5K, '07		10/19/07	13.98		0
10	BMN80031	Bkt, Main, Slide, Assy, 05K, IC, RE300		each	1		
20	BMN80032	Bkt, Adapter, PL, IC, RE300		each	1		
30	CSF08100	Capscrew, FH, 1/2-13 x 1", Alloy, Plt		each	4		
40	NTP07000	Nut, Hex, 7/16-14unc, 5, Plt		each	4		
50	WFN07000	Washer, Flat, 7/16", 2, Plt		each	4		
60	WLP07000	Washer, Lock, 7/16", 5, Plt		each	4		

Bill of Materials Listing

TransArctic Canada Inc.

12/4/2007

Page 1 of 1

Product Number		Description	Bin	Date	Weight	Uof M	Yield
Line	Component Prod#	Description		Unit	Qty		
KPC84161		Kit, Pulley, ISC, BBRE, '07		10/19/07	18.73		0
10	PUL83003	Pulley, Crank, ISC, 8.3L, 2B/X, 8"dia		each	1		
20	BTC12080	Bolt, Hex, 12 x 1.75 x 80mm, 10.9, Plt		each	4		
30	WFA12000	Washer, Flat, 12mm, 8.8, Plt		each	4		

Bill of Materials Listing

TransArctic Canada Inc.

12/4/2007

Page 1 of 1

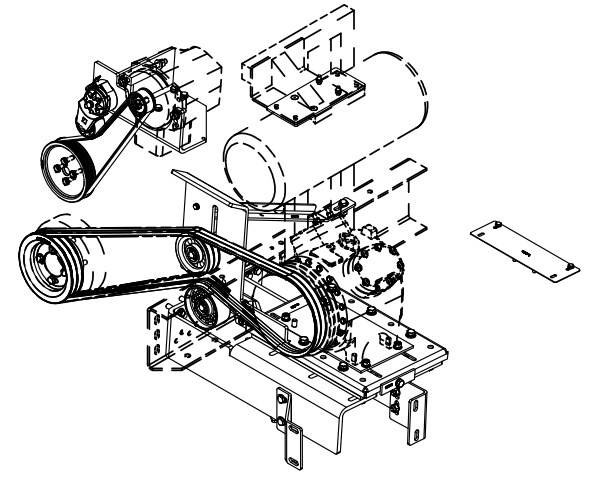
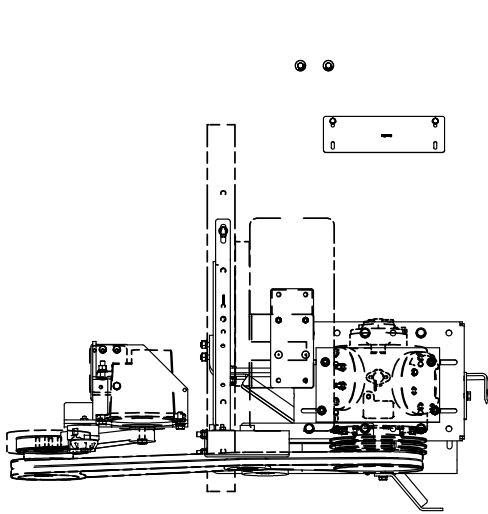
Product Number		Description	Bin	Date	Weight	Uof M	Yield
Line	Component Prod#	Description		Unit	Qty		
KAC84161		Alt. Kit, 24V, ISC, BBRE, '07		10/18/07	11.78		0
10	BEL81257	Belt, 8gr, 1257mm (49.5") (5080495)		each	1		
20	BMC83015	Bkt, Alt, Weldmt, ISC, BBRE, '07		each	1		
30	PUL83008	Pulley, Fan, Add-on, Cum, ISC, 8.3, 8gr		each	1		
40	PUL80064	Pulley,ALT,Frontside,P8,63.5d (3972808)		each	1		
50	TEN80002	Tenr, HD Spring, BackSide, CCW (89200A)		each	1		
60	KBA84161	Bag Kit, Fasteners, KAC84161		each	1		

Bill of Materials Listing

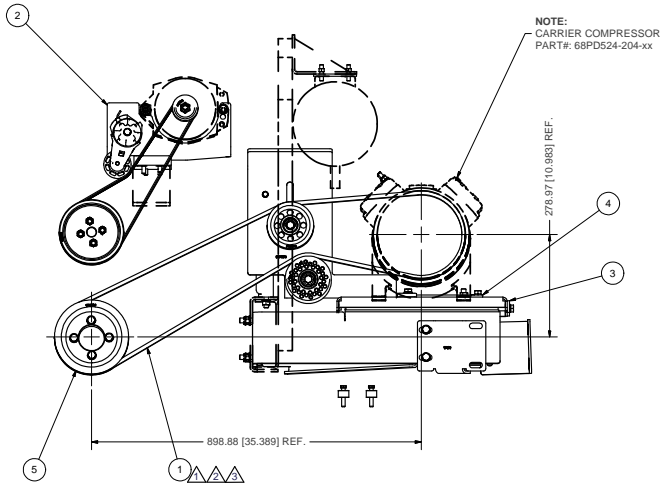
TransArctic Canada Inc.

6/23/2009
Page 1 of 1

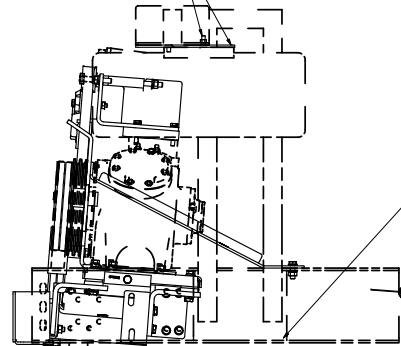
Product Number	Description	Date	Weight	Uof M	Yield
Line Component Prod#	Description	Bin Unit	Qty		
KBA84161	Bag Kit, Fasteners, KAC84161		10/19/2007	1.07	0
10	BTC10090		Bolt, Hex, 10 x 1.5 x 90mm, 10.9, Plt	each	1
20	BTC10055		Bolt, Hex, 10 x 1.5 x 55mm, 10.9, Plt,FT	each	3
25	CSS10055		Capscrew, SH, 10 x 1.5 x 55mm, 12.9,Plt	each	1
30	BTQ08653		Bolt, Hex, 1/2-13unc, 6.5", 8, Plt	each	1
40	BTQ08150		Bolt, Hex, 1/2-13unc, 1.5", 8, Plt	each	1
50	NTA10000		Nut, Hex, 10 x 1.5, 8.8, Plt	each	1
60	NTP08000		Nut, Hex, 1/2-13unc, 5, Plt	each	1
70	WFA10000		Washer, Flat, 10mm, 8.8, Plt	each	4
80	WFQ08000		Washer, Flat, 1/2", 8, Plt	each	3
90	WLA10000		Washer, Lock, 10mm, 8.8, Plt	each	4
100	WLQ08000		Washer, Lock, 1/2", 8, Plt	each	2



ISOMETRIC VIEW



REUSE EXISTING BRACKET HARDWARE.



REUSE & MODIFY EXISTING EXHAUST SHIELD BRACKET & HARDWARE. (FROM REAR OEM POSITION TO LOWERED OTHER SIDE OF TUBE).

REUSE EXISTING MUFFLER BRACKET & HARDWARE.

NOTES:

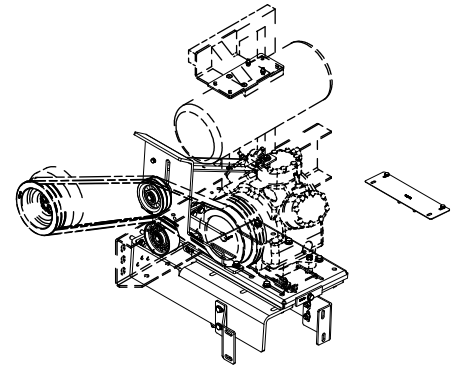
- 1) USE SERVICABLE THREADLOCKER ON ALL FASTENERS TO ENGINE COMPONENTS AND TORQUE ALL BOLTS TO S.A.E. SPECIFICATIONS.
- 2) SEE "TRANSARCTIC A/C COMPRESSOR MOUNT INSTALLATION DISCLAIMER".



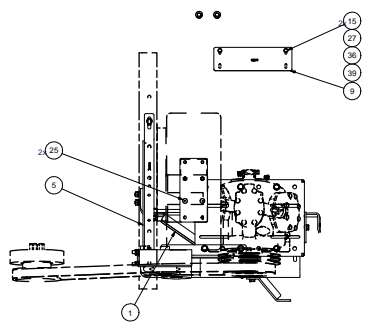
ITEM	QTY.	UM	PART NUMBER	DESCRIPTION
5	1	EACH	KPC84161	KIT, PULLEY, ISC, A3RE, '07
4	1	EACH	KKT82461	MT KIT, TRANSIT, O5K, '07
3	1	EACH	KBB84161	MT KIT, BASE, TRANSIT, A3RE, '07
2	1	EACH	KAC84161	ALT. KIT, 24V, ISC, BBRE, '07
1	2	EACH	BEL22592	BELT, 8 gr, 2592mm (102")

Parts List

3	WAS BEL22592	8/13/2017	JRR	12/3/2007	
2	GENERAL REVISION	8/22/2008	JRR		
1	CHANGED BELT	08/07/2008	VALJ	12/3/2007	
0	RELEASED TO PRODUCTION	12/03/07	VALJ	GA	
REV/ECN	DESCRIPTION	DATE	BY		
			Val Jakowlew	12/03/07	TITLE
			Ron Ingram	12/3/2007	MT KIT, ISC, BBRE, O5K, 2B, 8" CRANK, '07
			Dale Mason	12/3/2007	APPROVED
<p>THIS DRAWING CONTAINS PROPRIETARY CONFIDENTIAL INFORMATION OWNED BY TRANSARCTIC CANADA INC. THE DOCUMENT AND THE INFORMATION IN IT ARE NOT TO BE USED, DISCLOSED OR REPRODUCED WITHOUT EXPRESS WRITTEN PERMISSION OF THE COMPANY.</p>					
UNSPECIFIED TOLERANCES:		ALL DIM.			
ONE DECIMAL PLACE (X.0)	FR	FR			
TWO DECIMAL PLACE (X.00)	FR	FR			
THREE DECIMAL PLACE (X.000)	FR	FR			
FRACTIONAL (1/16")	FR	FR			
ANGULAR	FR	FR			
THIRD ANGLE PROJECTION			DRAWING UNIT OF MEASURE: MM [INCH]		
DWG NO		SCALE		REV	
KMC82461		1:4		3	
SHEET 1 OF 1					

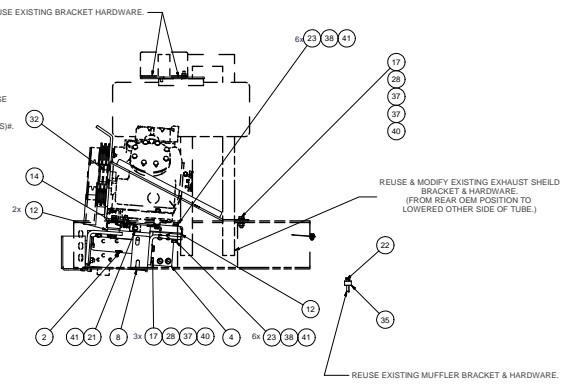


ISOMETRIC VIEW



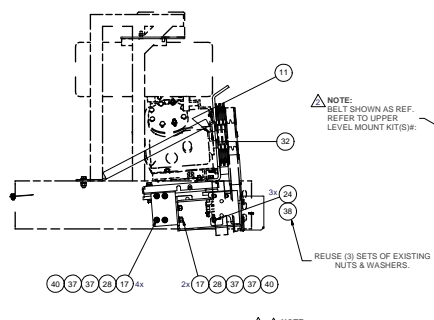
NOTE: REFER TO CARRIER COMPRESSOR INSTALL KIT OPTIONS (OSC COMPRESSOR SHOWN)

NOTE: COMPRESSOR BASE SHOWN AS REF. REFER TO UPPER LEVEL MOUNT KIT(S).



REUSE & MODIFY EXISTING EXHAUST SHIELD BRACKET & HARDWARE. (FROM REAR OEM POSITION TO LOWERED OTHER SIDE OF TUBE.)

REUSE EXISTING MUFFLER BRACKET & HARDWARE.



NOTE: BOLT SHOWN AS REF. REFER TO UPPER LEVEL MOUNT KIT(S).

NOTE: SHANK PULLEY SHOWN AS REF. REFER TO UPPER LEVEL MOUNT KIT(S).

REUSE (3) SETS OF EXISTING NUTS & WASHERS.

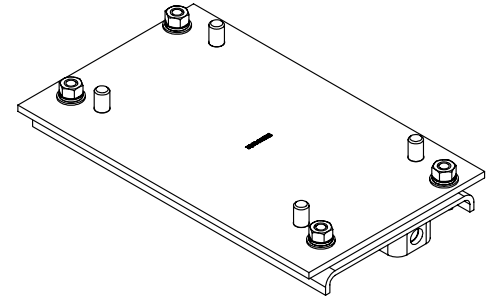
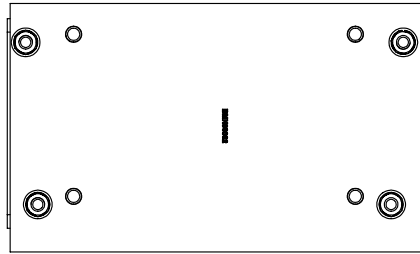
- NOTES:
- 1) USE SERVICABLE THREADLOCKER ON ALL FASTENERS TO ENGINE COMPONENTS AND TORQUE ALL BOLTS TO S.A.E. SPECIFICATIONS.
 - 2) SEE TRANSTARCTIC A/C COMPRESSOR MOUNT INSTALLATION DISCLAIMER.
 - 3) WEIGHT: 155.00 LB

ITEM	QTY	UOM	PART NUMBER	DESCRIPTION
41	13	EACH	WLO08000	WASHER, LOCK, 1/2", 8, PLT
40	14	EACH	WLA12000	WASHER, LOCK, 12mm, 8, 8, PLT
39	3	EACH	WLO08000	WASHER, LOCK, 8mm, 8, 8, PLT
38	10	EACH	WFO08000	WASHER, FLAT, 1/2", 8, PLT
37	20	EACH	WFA12000	WASHER, FLAT, 12mm, 8, 8, PLT
36	4	EACH	WFO08000	WASHER, FLAT, 8mm, 8, 8, PLT
35	2	EACH	SPL19010	SPACER, COL, DRL, 19.05mm x25.4x10.53
34	2	EACH	SLV17012	SLEEVE, PULLEY, 16.94 x 22.23 mm x12.19
33	1	EACH	SCD06012	SPACER, COL, DRL, 6.0mm x 33.80 x 12.0
32	1	EACH	SCD12012	SPACER, COL, DRL, 32.8mm x 50.80 x 12.3
31	1	EACH	PLA05012	PULLEY, ASSY, IDLER, B/BX gr. 5" STL, PLT
30	1	EACH	PLA05011	PULLEY, ASSY, IDLER, B/S, 5" STL, PLT
29	2	EACH	WTP06000	NUT, HEX, 3/8-16UNC, 5, PLT
28	13	EACH	NTA12000	NUT, HEX, 12 x 1.75, 8, 8, PLT
27	3	EACH	NTA08000	NUT, HEX, 8 x 1.25, 8, 8, PLT
25	2	EACH	CFE06015	CROSSREW, FH, 3/8x1.5x.75, 9, PLT
24	3	EACH	BTQ08200	BOLT, HEX, 1/2-13UNC x 2.00, 8, PLT
23	12	EACH	BTQ08126	BOLT, HEX, 1/2-20UNC x 1.25, 8, PLT
22	2	EACH	BTQ06000	BOLT, HEX, 3/8-16UNC, 2.00, 8, PLT
21	1	EACH	BTR08653	BOLT, HEX, 1/2-13UNC x 6.50, 5, PLT, FT
20	2	EACH	BTG12100	BOLT, HEX, 12 x 1.75 x 100mm, 10.9, PLT
19	1	EACH	BTG12060	BOLT, HEX, 12 x 1.75 x 60mm, 10.9, PLT
18	1	EACH	BTG12050	BOLT, HEX, 12 x 1.75 x 50mm, 10.9, PLT
17	10	EACH	BTG12040	BOLT, HEX, 12 x 1.75 x 40mm, 10.9, PLT
16	1	EACH	BTQ08015	BOLT, HEX, 8 x 1.25 x 35mm, 10.9, PLT
15	2	EACH	BTQ08020	BOLT, HEX, 8 x 1.25 x 20mm, 10.9, PLT
14	1	EACH	BMN80025	BKT, BACK, PL, SLIDE, IC, RE300
13	1	EACH	BMN80009	BKT, MAIN, BCKE PL, IC, RE300
12	2	EACH	BMN80008	VIBRATION ISOLATOR, BAR 16.50 x 2 x 1.50
11	1	EACH	BMC83031	BKT, SLIDE, BLOCK, IDLER, BBR, 07
10	1	EACH	BMC83029	BKT, SHFT, TANK, WELDMT, ISC, BBR, 07
9	1	EACH	BMC83028	BKT, TRAY, ISC, BBR, 07
8	1	EACH	BMC83027	BKT, SPRT, BUMP, SIDE, ISC, BBR, 07
7	1	EACH	BMC83026	BKT, SPRT, BUMP, REAR, ISC, BBR, 07
6	1	EACH	BMC83024	BKT, MAIN, IDLER, ISC, BBR, 07
5	1	EACH	BMC83023	BKT, GUSSET, IDLER, ISC, BBR, 07
4	1	EACH	BMC83022	BKT, COMP, REAR, ISC, BBR, 07
3	1	EACH	BMC83021	BKT, COMP, FR, ISC, BBR, 07
2	1	EACH	BMC83020	BKT, DAMPNER, ISC, BBR, 07
1	1	EACH	BMC83019	BKT, GUSSET, BUMPER, ISC, BBR, 07

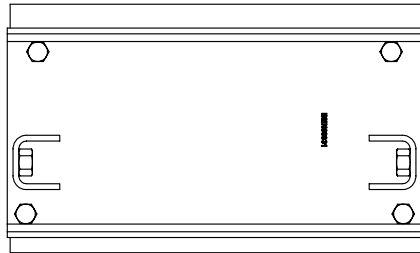
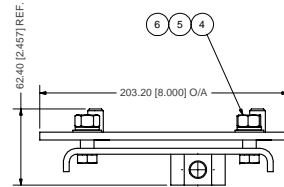
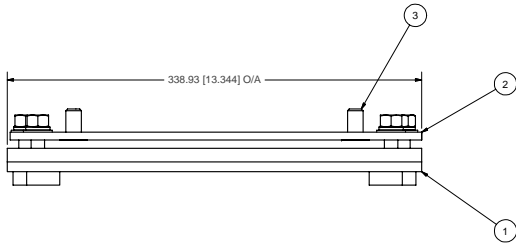
DRAWN: Jose Rodriguez 10/20/2008
 CHECKED: [Signature] 10/20/2008
 REVISIONS:
 1 DATE: 10/20/2008 BY: [Signature] DESCRIPTION: [Signature]
 2 DATE: 10/20/2008 BY: [Signature] DESCRIPTION: [Signature]
 3 DATE: 10/20/2008 BY: [Signature] DESCRIPTION: [Signature]
 4 DATE: 10/20/2008 BY: [Signature] DESCRIPTION: [Signature]
 5 DATE: 10/20/2008 BY: [Signature] DESCRIPTION: [Signature]
 6 DATE: 10/20/2008 BY: [Signature] DESCRIPTION: [Signature]
 7 DATE: 10/20/2008 BY: [Signature] DESCRIPTION: [Signature]
 8 DATE: 10/20/2008 BY: [Signature] DESCRIPTION: [Signature]

TITLE: MT KIT, BASE, TRANSIT, A3RE, 07
 DWG NO: KBB84161
 SHEET 1 OF 1

TRANSTARCTIC INC.
 THIRD ANGLE PROJECTION



ISOMETRIC VIEW

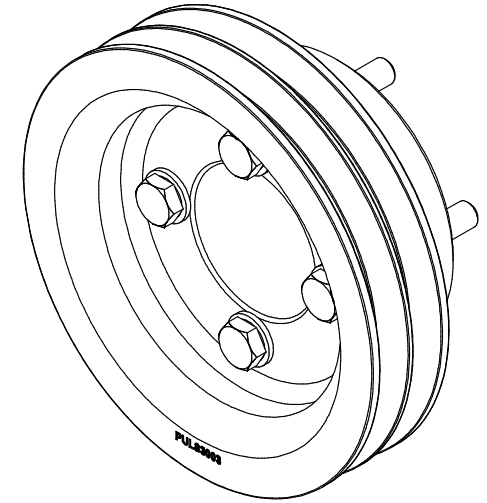
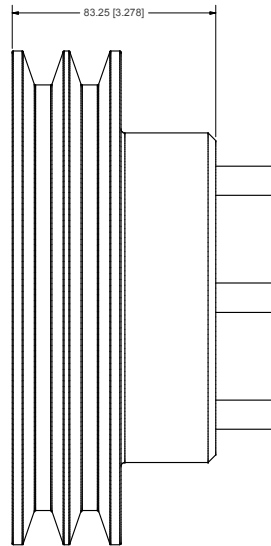
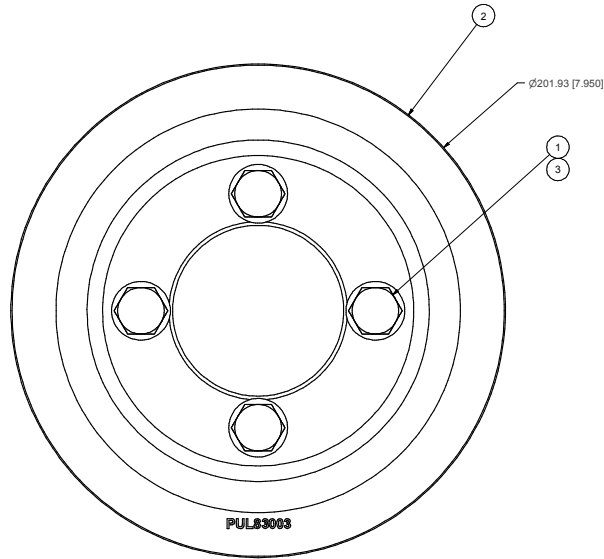
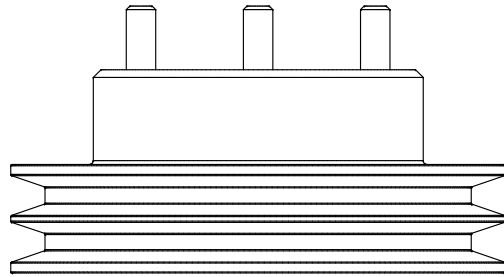


- NOTES:**
- 1) USE SERVICABLE THREADLOCKER ON ALL FASTENERS TO ENGINE COMPONENTS AND TORQUE **ALL BOLTS** TO S.A.E. SPECIFICATIONS.
 - 2) SEE 'TRANSARGTIC A/C COMPRESSOR MOUNT INSTALLATION DISCLAIMER'.
 - 3) WEIGHT: 13.96 LB

ITEM	QTY	U/M	PART NUMBER	DESCRIPTION
6	4	EACH	WLP07000	WASHER, LOCK, 7/16", 5, PLT
5	4	EACH	WFO7000	WASHER, FLAT, 7/16", 2, PLT
4	4	EACH	NTP07000	NUT, HEX, 7/16-14UNC, 5, PLT
3	4	EACH	CSP08100	CAPSCREW, FH, 3/8-16 x 1", 9, PLT
2	1	EACH	BMN80032	BKT, ADAPTER, PL, IC, RE300
1	1	EACH	BMN80031	BKT, MAIN, SLIDE, ASSY, OSK, IC, RE300

TRANSARGTIC INC.

DRAWN Jose Rodriguez 10/20/2008 CHECKED Val Jakowlew 10/20/2008 REV'CD James Stewart 10/20/2008 APPROVED Ron Ingram 10/20/2008 DATE Dale Mason 10/20/2008	TITLE MT KIT, TRANSIT, OSK, '07	DWG NO KKT82461 REV 0												
UNspecified TOLERANCES: <table border="1"> <tr> <td>ONE DECIMAL PLACE (X.0)</td> <td>±.05</td> <td>(FRACTIONAL)</td> </tr> <tr> <td>TWO DECIMAL PLACE (X.00)</td> <td>±.01</td> <td>(FRACTIONAL)</td> </tr> <tr> <td>THREE DECIMAL PLACE (X.000)</td> <td>±.005</td> <td>(FRACTIONAL)</td> </tr> <tr> <td>ANGULAR</td> <td>±.01</td> <td></td> </tr> </table>	ONE DECIMAL PLACE (X.0)	±.05	(FRACTIONAL)	TWO DECIMAL PLACE (X.00)	±.01	(FRACTIONAL)	THREE DECIMAL PLACE (X.000)	±.005	(FRACTIONAL)	ANGULAR	±.01		THIRD ANGLE PROJECTION	DRAWING UNIT OF MEASURE: MM (INCH) SCALE: 1:2
ONE DECIMAL PLACE (X.0)	±.05	(FRACTIONAL)												
TWO DECIMAL PLACE (X.00)	±.01	(FRACTIONAL)												
THREE DECIMAL PLACE (X.000)	±.005	(FRACTIONAL)												
ANGULAR	±.01													



ISOMETRIC VIEW

- NOTES:**
 1) USE SERVICABLE THREADLOCKER ON ALL FASTENERS TO ENGINE COMPONENTS AND TORQUE **ALL** BOLTS TO S.A.E. SPECIFICATIONS.
 2) SEE "TRANSARGTIC A/C COMPRESSOR MOUNT INSTALLATION DISCLAIMER".
 3) WEIGHT: 18.82 LB

ITEM	QTY	U/M	PART NUMBER	DESCRIPTION
3	4	EACH	WFA12000	WASHER, FLAT, 12mm, 8.8, PLT
2	1	EACH	PUL83003	PULLEY, CRANK, ISC, 8.3L, 2B/X, 8" DIA
1	4	EACH	BTC12080	BOLT, HEX, 12 x 1.75 x 80mm, 10.9, PLT, FT

BILL OF MATERIALS

DRAWN	Jose Rodriguez	6/17/2009	
CHECKED	Val Jakowlew	6/17/2009	
REV	ECN	DESCRIPTION	DATE



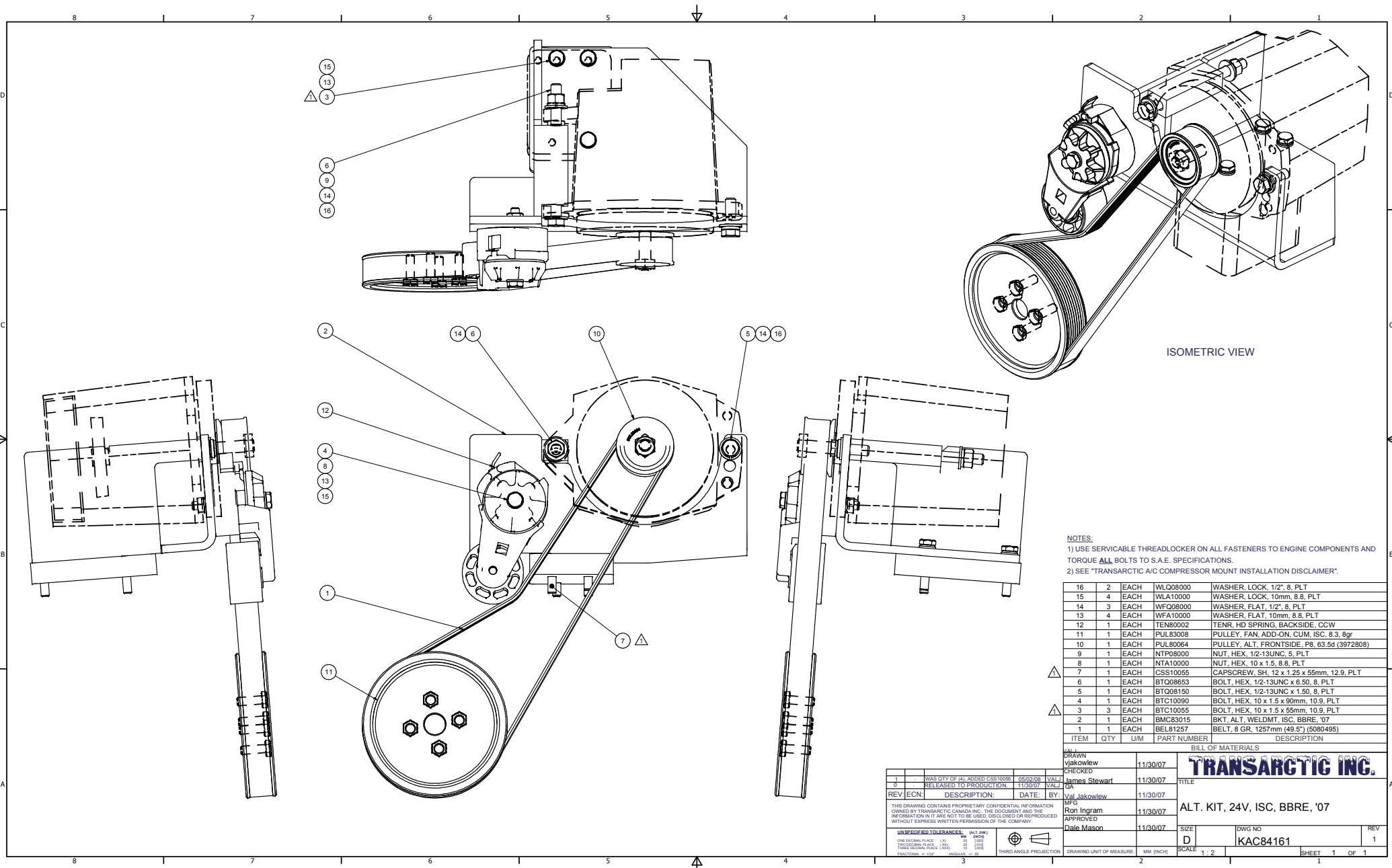
RELEASED TO PRODUCTION	6/17/2009	DRK
DATE	6/17/2009	BY
DATE	6/17/2009	BY
DATE	6/17/2009	BY
DATE	6/17/2009	BY

THIS DRAWING CONTAINS PROPRIETARY/CONFIDENTIAL INFORMATION OWNED BY TRANSARGTIC CANADA INC. THE DOCUMENT AND THE INFORMATION IN IT ARE NOT TO BE USED, DISCLOSED OR REPRODUCED WITHOUT EXPRESS WRITTEN PERMISSION OF THE COMPANY.

UNSPECIFIED TOLERANCES:	(ALL DIM)	GROUP
ONE DECIMAL PLACE (10)	25	FORM
TWO DECIMAL PLACE (20)	25	FORM
FRACTIONAL (1/32)	25	FORM



TITLE	KIT, PULLEY, ISC, BBRE, '07		
SIZE	D	DWG NO	REV
SCALE	1:1	KPC84161	0
DRAWING UNIT OF MEASURE	MM (INCH)	SHEET	1 OF 1



ISOMETRIC VIEW

NOTES:
 1) USE SERVICABLE THREADLOCKER ON ALL FASTENERS TO ENGINE COMPONENTS AND TORQUE **ALL** BOLTS TO S.A.E. SPECIFICATIONS.
 2) SEE "TRANSARGTIC A/C COMPRESSOR MOUNT INSTALLATION DISCLAIMER".

ITEM	QTY	UM	PART NUMBER	DESCRIPTION
16	2	EACH	WLG08000	WASHER, LOCK, 1/2", 8, PLT
15	4	EACH	WLA10000	WASHER, LOCK, 10mm, 8.8, PLT
14	3	EACH	WFG08000	WASHER, FLAT, 1/2", 8, PLT
13	4	EACH	WFA10000	WASHER, FLAT, 10mm, 8.8, PLT
12	1	EACH	TEN80002	TENR, HD SPRING, BACKSIDE, CCW
11	1	EACH	PUL83008	PULLEY, FAN, ADD-ON, CUM, ISC, 8.3, 8gr
10	1	EACH	PUL80064	PULLEY, ALT, FRONTSIDE, PB, 63.5d (3972808)
9	1	EACH	NTP08000	NUT, HEX, 1/2-13UNC, 5, PLT
8	1	EACH	NTA10000	NUT, HEX, 10 x 1.5, 8.8, PLT
7	1	EACH	CSS10055	CAPSCREW, SH, 12 x 1.25 x 55mm, 12.9, PLT
6	1	EACH	BT008653	BOLT, HEX, 1/2-13UNC x 6.50, 8, PLT
5	1	EACH	BT008150	BOLT, HEX, 1/2-13UNC x 1.50, 8, PLT
4	1	EACH	BT010090	BOLT, HEX, 10 x 1.5 x 90mm, 10.9, PLT
3	3	EACH	BT010055	BOLT, HEX, 10 x 1.5 x 55mm, 10.9, PLT
2	1	EACH	BMC83015	BKT, ALT, WELDMT, ISC, BBRE, '07
1	1	EACH	BEL81257	BELT, 8 GR, 1257mm (49.5") (5080495)

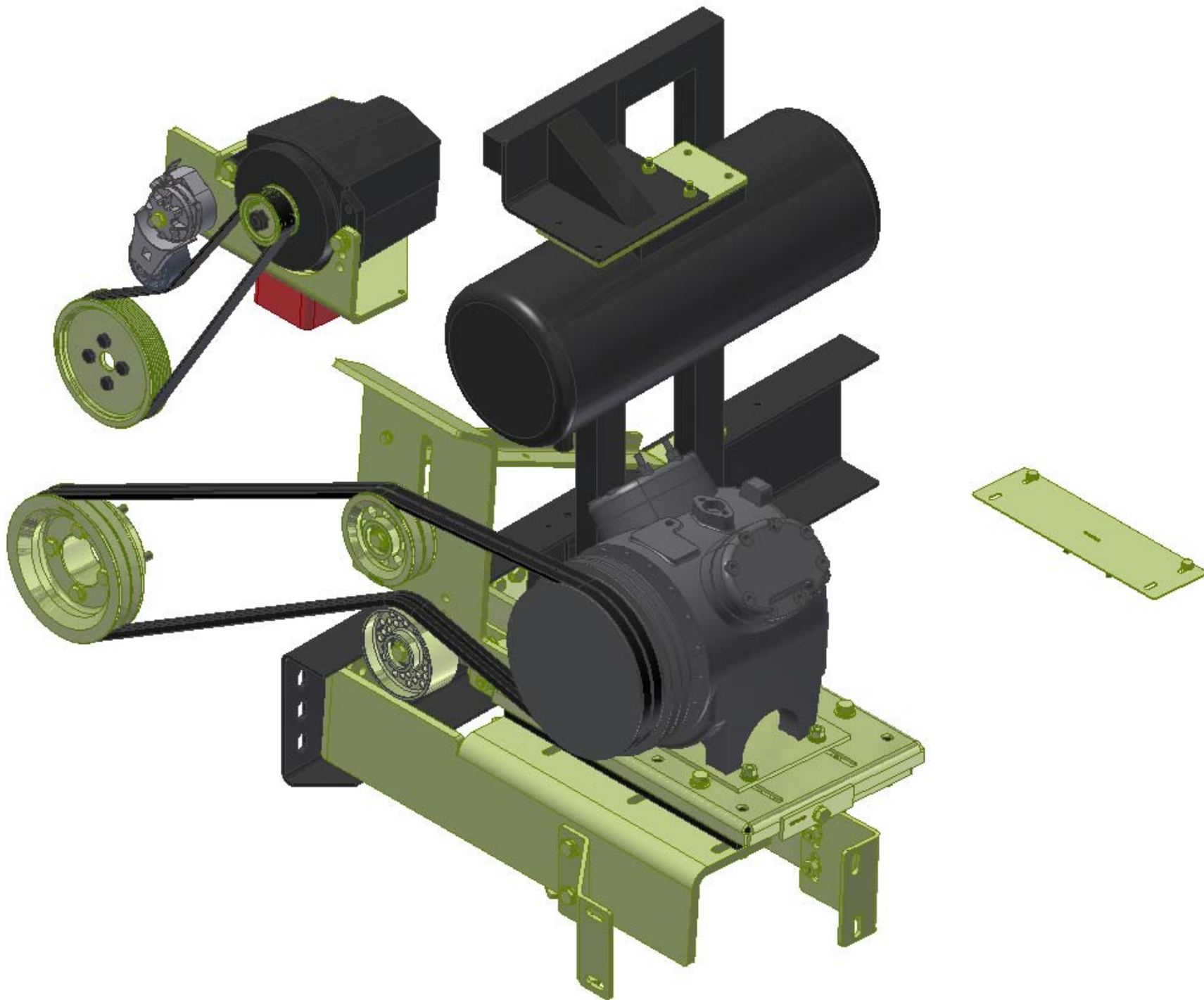
BILL OF MATERIALS			
DRAWN	11/30/07		
CHKD	11/30/07		
REV	DESCRIPTION	DATE	BY
1	WAS QTY OF (4) ADDED CSS10055	05/02/08	VAL
2	RELEASED TO PRODUCTION	11/30/07	VAL
3			OK
4			James Stewart
5			Val Jakowlew
6			Ron Ingram
7			Dale Mason
TITLE		ALT. KIT, 24V, ISC, BBRE, '07	
SIZE		DWG NO	
D		KAC84161	
SCALE		1:2	
DRAWING UNIT OF MEASURE		MM (INCH)	
SHEET		1 OF 1	

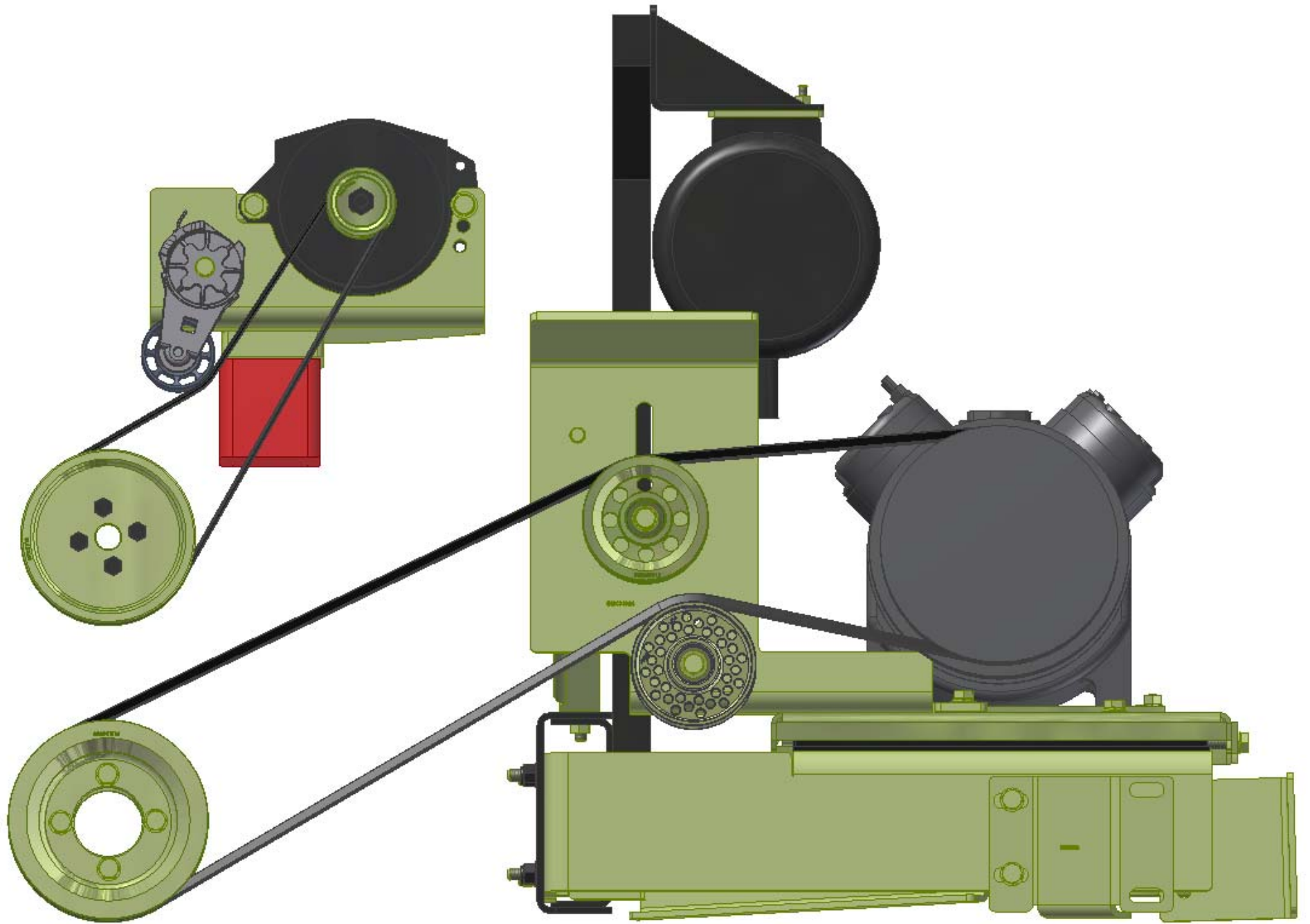
THIS DRAWING CONTAINS PROPRIETARY CONFIDENTIAL INFORMATION OWNED BY TRANSARGTIC CANADA INC. THE DOCUMENT AND THE INFORMATION IT CONTAINS ARE NOT TO BE USED, DISCLOSED OR REPRODUCED WITHOUT EXPRESS WRITTEN PERMISSION OF THE COMPANY.

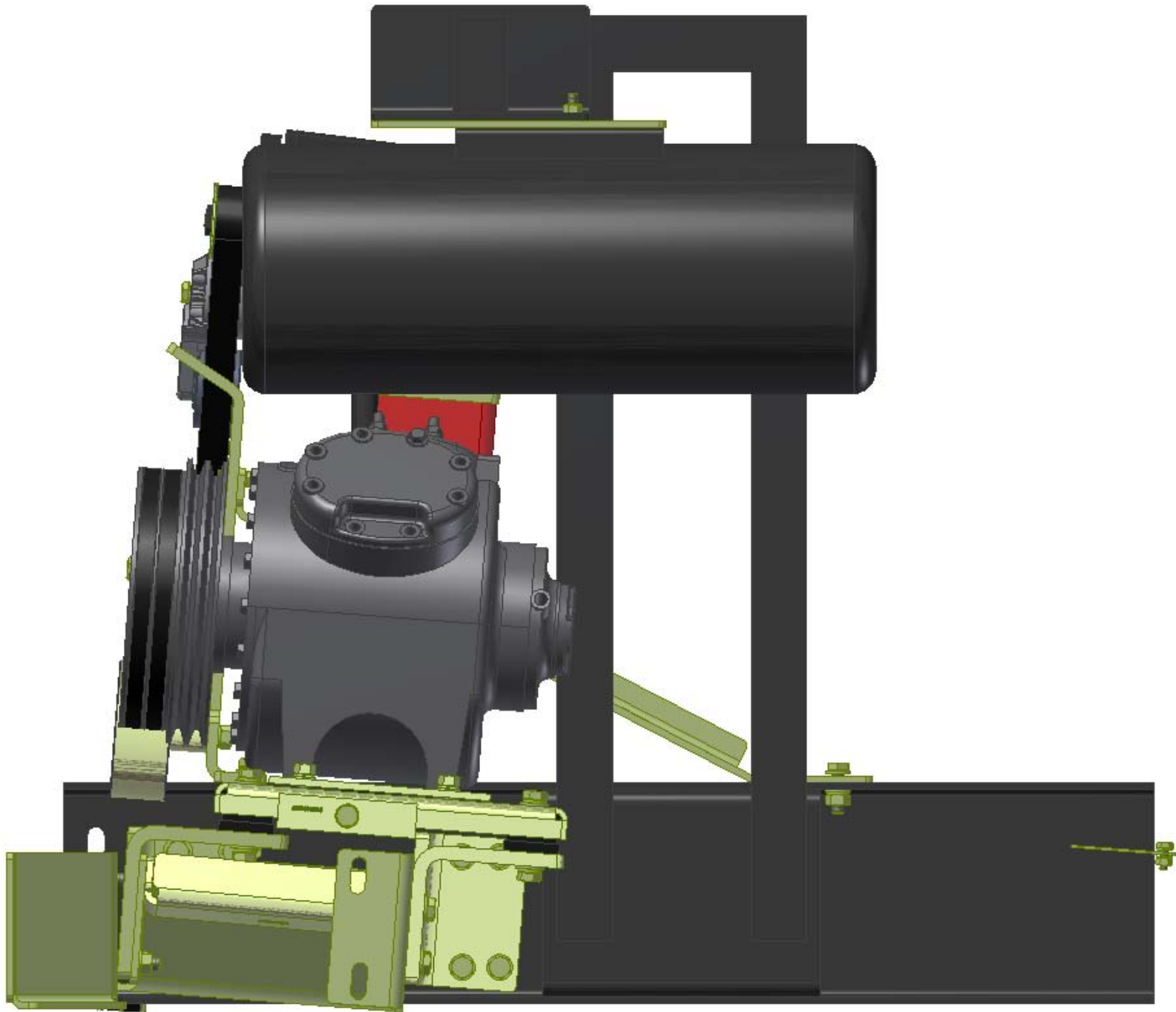
UNSPECIFIED TOLERANCES: (ALL DIM) (UNLESS OTHERWISE SPECIFIED)
 ONE DECIMAL PLACE (10) .05 (10)
 TWO DECIMAL PLACE (20) .02 (20)
 FRACTIONAL (1/32) .005 (32)

THIRD ANGLE PROJECTION

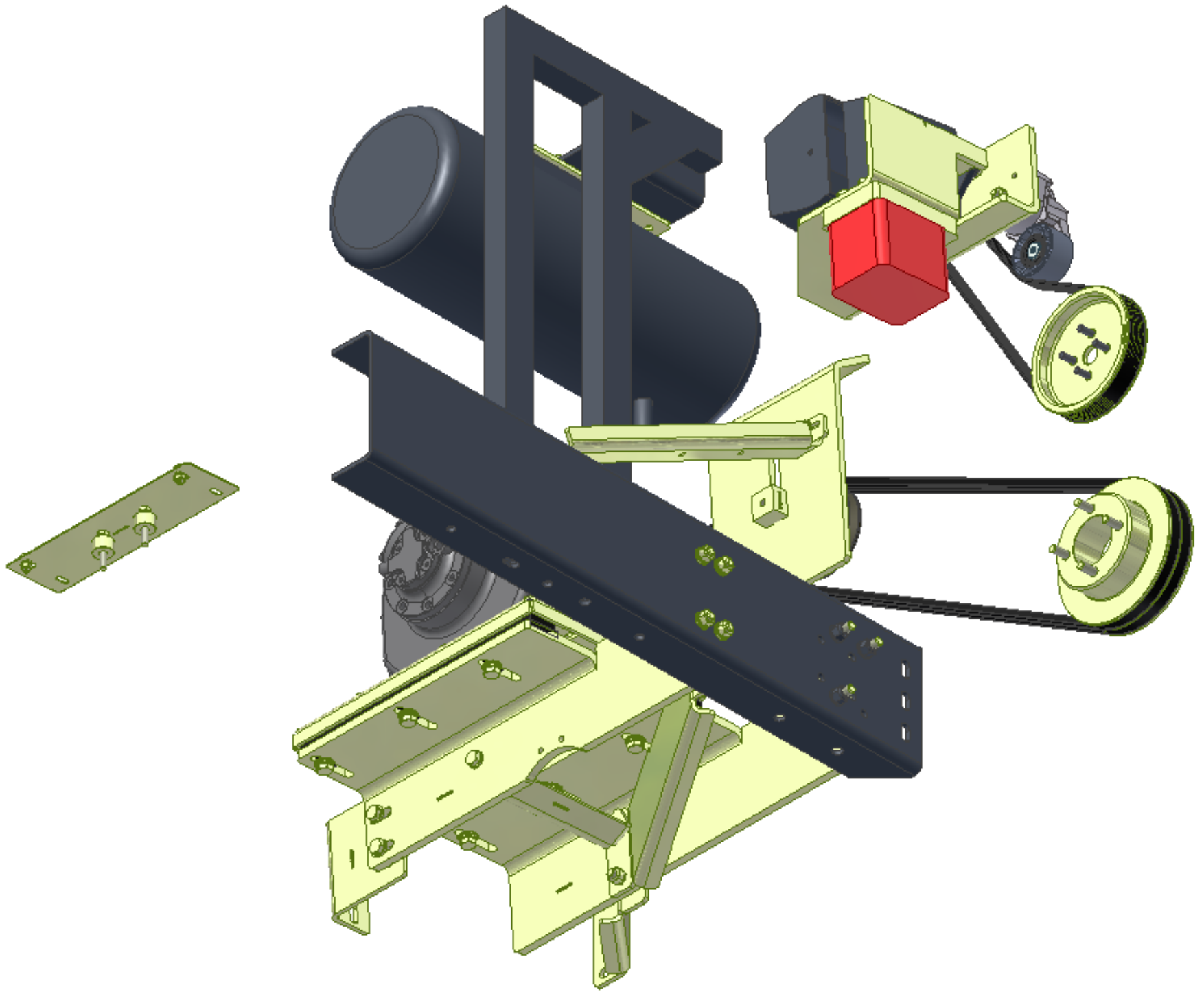












TransArctic A/C Compressor Mount Installation Disclaimer

All compressor mounts should be installed by qualified and trained personnel using proper tools and equipment in safe working conditions following industry standard guidelines for motor vehicle service and repair.

The installer of any compressor mount purchased from TransArctic must undertake all responsibility of issues arising from that compressor bracket being installed on any vehicle. As well as insure that a **proper and sufficient ground** is established between the compressors' clutches and the vehicle's engine. Mount functionality, operation and durability can all be compromised by an incompetent installation.

Due to the many different situations, parameters and application criteria, which are beyond the compressor mount manufacturer's control, TransArctic does not warrant design, durability, or operational functionality of any compressor mount improperly installed by another party.

With no implied guarantees it is the mount installer's strict responsibility to determine safety and functionality, of the compressor mount, at the time of installation.

Please contact TransArctic with any issue arising from installation so we may better improve the product. If you have any reservations about the compressor mount integrity contact TransArctic immediately at 1-877-COLD-AIR.

Mark OEM tensioner location

Install Kit

Check for Interferences

Check to ensure that the proper OEM tensioner orientation is maintained

Run engine with A/C system engaged for at least 10 minutes to run in belt

Check OEM tensioner orientation and adjust as required

Responsabilidad limitada de TransArctic en la instalación del soporte del compresor

Todos los soportes de los compresores deben ser instalados por personas calificadas y entrenadas, usando para ello los equipos y herramientas necesarios para esta labor en buenas condiciones y según las normas y guías para el servicio y/o reparación de motores de vehículos.

El instalador de los soportes comprados en TransArctic asume toda la responsabilidad de cualquier problema que surga en el soporte del compresor al vehículo; de igual manera es responsable que el cable a tierra sea conectado entre el embrague del compresor y el motor del vehículo.

Se advierte que el buen funcionamiento y la durabilidad del soporte pueden ser comprometidos por defectos en su instalación.

Debido a las diversas situaciones que se puedan presentar fuera del control del fabricante, TransArctic no garantiza el diseño, la durabilidad o el correcto funcionamiento de cualquier equipo inapropiadamente instalado por terceros.

Esta sobreentendido que el Instalador del montaje del compresor es estrictamente responsable de la seguridad y funcionamiento del equipo en el momento de la instalación.

Si tuviera algún problema o duda acerca de la instalación del soporte del compresor pongase en contacto inmediatamente con TransArctic al teléfono 1-877-COLD-AIR de modo que podamos mejorar nuestro producto.

Note la ubicación del medidor de tensión OEM

Instale el equipo

Controlar si hay interferencias.

Asegurese que el medidor de tensión mantenga la orientación justa.

Encienda el motor por lo menos 10 minutos con el sistema A/C enganchado para que la correa corra

Controle la orientación justa del medidor de tensión y ajuste a las condiciones requeridas del fabricante