

# Bill of Materials Listing

TransArctic Canada Inc.

11/2/2009

Page 1 of 1

Product Number		Description	Bin	Date	Weight	Uof M	Yield
Line	Component Prod#	Description		Unit	Qty		
<b>KMN82430</b>		<b>Mt. Kit, MForce DT, RE300, 05K, 07-08</b>		<b>10/11/2007</b>	<b>203.66</b>		<b>0</b>
10	BEL22743	Belt, B gr, 2743mm (108") (BX105)		each	2		
20	BMN80041	Bkt, Main, Front PI, ICRE, 2007		each	1		
30	BMN80042	Bkt, Main, Rear PI, ICRE, 2007		each	1		
40	BMN80008	Vibration Isolator, Bar, 16.50 x 2 x 1.50		each	2		
50	BMN80009	Bkt, Main, Base PI, IC, RE300		each	1		
70	BMN80025	Bkt, Back, PL, Slide, IC, RE300		each	1		
80	BMN80031	Bkt, Main, Slide, Assy, 05K, IC, RE300		each	1		
90	BMN80032	Bkt, Adapter, PL, IC, RE300		each	1		
100	BMN80043	Bkt, Spacer Plate, ICRE, 2007		each	1		
110	BMN80044	Bkt, Main Idler PI, ICRE, 2007		each	1		
125	BMN80061	Bkt, Diag, Brace, IC, RE300, '07		each	1		
130	PUA06001	Pulley, Assy, Idler, B/S, 6", Stl, Plt		each	1		
140	PUA05012	Pulley, Assy, Idler, B/BX gr, 5", STL, Plt		each	1		
150	PUL76022	Pulley, Crank, Nav DT, 7.6L, 2B/X, 8" DIA		each	1		
170	SCD14912	Spacer, Col, Drl, 14.9 mm x 31.8o x 12.3i		each	2		
180	SLV17012	Sleeve, Pulley, 16.9o x 22.23mm x 12.32i		each	2		
200	KBN82430	Bag Kit, Fasteners, KMN82430		each	1		

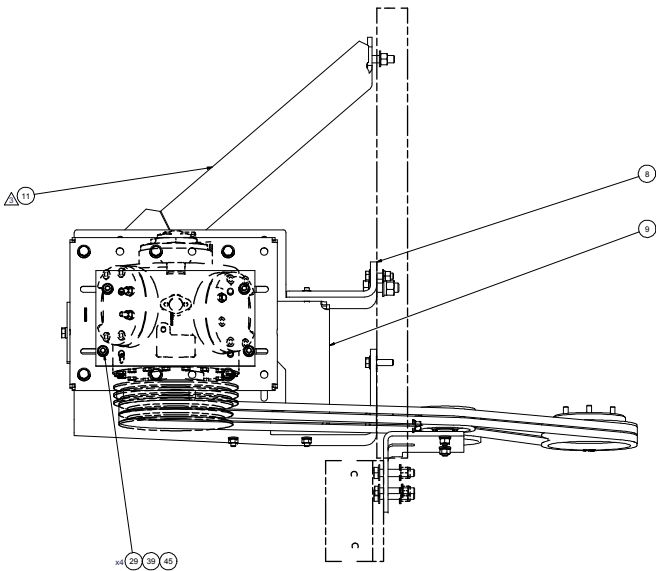
# Bill of Materials Listing

TransArctic Canada Inc.

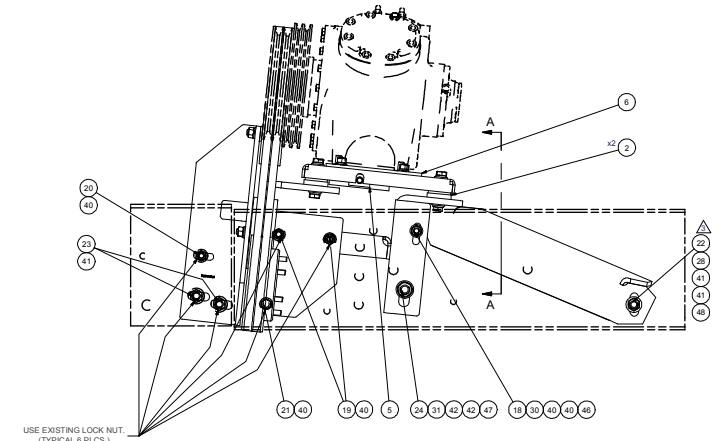
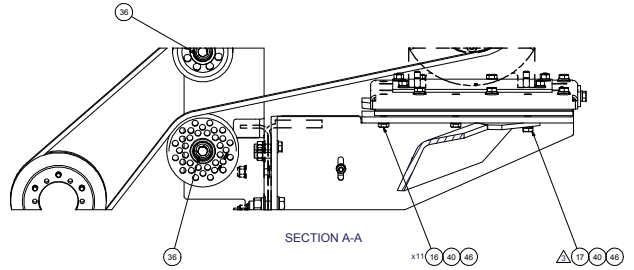
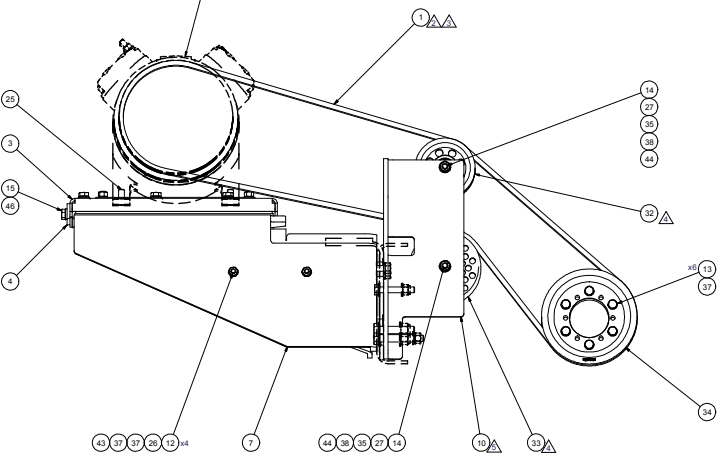
10/5/2009

Page 1 of 1

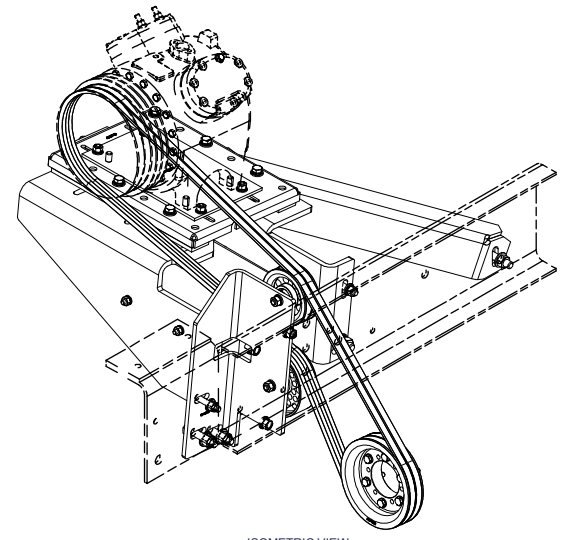
Product Number	Description	Date	Weight	Uof M	Yield
Line Component Prod#	Description	Bin Unit	Qty		
<b>KBN82430</b>	<b>Bag Kit, Fasteners, KMN82430</b>	<b>9/27/2007</b>	<b>6.49</b>		<b>0</b>
20 BTC12070	Bolt, Hex, 12 x 1.75 x 70mm, 10.9, Plt	each	2		
40 BTC10050	Bolt, Hex, 10 x 1.5 x 50mm, 10.9, Plt	each	6		
50 BTC10040	Bolt, Hex, 10 x 1.5 x 40mm, 10.9, Plt,FT	each	4		
60 BTQ12250	Bolt, Hex, 3/4- 10unc, 2.50", 8, Plt	each	1		
70 BTQ10301	Bolt, Hex, 5/8-18unf, 3", 8, PLT	each	2		
75 BTQ10250	Bolt, Hex, 5/8-11unc, 2.5", 8, PLT	each	1		
80 BTQ08451	Bolt, Hex, 1/2-20unc, 4.5", 8, Plt	each	1		
90 BTQ08301	Bolt, Hex, 1/2-20unf, 3", 8, Plt	each	1		
100 BTQ08200	Bolt, Hex, 1/2-13unc, 2.0", 8, Plt	each	1		
105 BTQ08201	Bolt, Hex, 1/2-20unc, 2.0", 8, Plt	each	2		
110 BTQ08126	Bolt, Hex, 1/2-20unf, 1.25", 8, Plt	each	11		
115 BTQ08151	Bolt, Hex, 1/2-20unf, 1.5", 8, Plt	each	1		
130 BTP08653	Bolt, Hex, 1/2-13unc, 6.5", 5, Plt, FT	each	1		
140 CSF08100	Capscrew, FH, 1/2-13 x 1", Alloy, Plt	each	4		
150 NTA12000	Nut, Hex, 12 x 1.75, 8.8, Plt	each	2		
160 NTA10000	Nut, Hex, 10 x 1.5, 8.8, Plt	each	4		
165 NTL10000	Nut, Lock, Hex, 5/8-11unc, 9, Plt	each	1		
170 NTP12000	Nut, Hex, 3/4-10unc, 5, Plt	each	1		
180 NTP08000	Nut, Hex, 1/2-13unc, 5, Plt	each	1		
190 NTP07000	Nut, Hex, 7/16-14unc, 5, Plt	each	4		
200 WFA12000	Washer, Flat, 12mm, 8.8, Plt	each	2		
210 WFA10000	Washer, Flat, 10mm, 8.8, Plt	each	14		
215 WLQ10000	Washer, Lock, 5/8", 8, Plt	each	1		
220 WFQ12000	Washer, Flat, 3/4", 8, Plt	each	2		
225 WFQ10000	Washer, Flat, 5/8", 8, Plt	each	4		
230 WFQ08000	Washer, Flat, 1/2", 8, Plt	each	18		
240 WFN07000	Washer, Flat, 7/16", 2, Plt	each	4		
260 WLA12000	Washer, Lock, 12mm, 8.8, Plt	each	2		
270 WLA10000	Washer, Lock, 10mm, 8.8, Plt	each	4		
280 WLP12000	Washer, Lock, 3/4", 5, Plt	each	1		
290 WLP08000	Washer, Lock, 1/2", 5, Plt	each	14		
300 WLP07000	Washer, Lock, 7/16", 5, Plt	each	4		



NOTE:  
CARRIER COMPRESSOR  
PART # 68P0524-204-xx



USE EXISTING LOCK NUT.  
(TYPICAL 6 PLCS.)



ISOMETRIC VIEW

NOTES:  
1) USE SERVICABLE THREADLOCKER ON ALL FASTENERS TO ENGINE COMPONENTS AND TORQUE ALL BOLTS TO S.A.E. SPECIFICATIONS.  
2) SEE "TRANSARCTIC A/C COMPRESSOR MOUNT INSTALLATION DISCLAIMER."

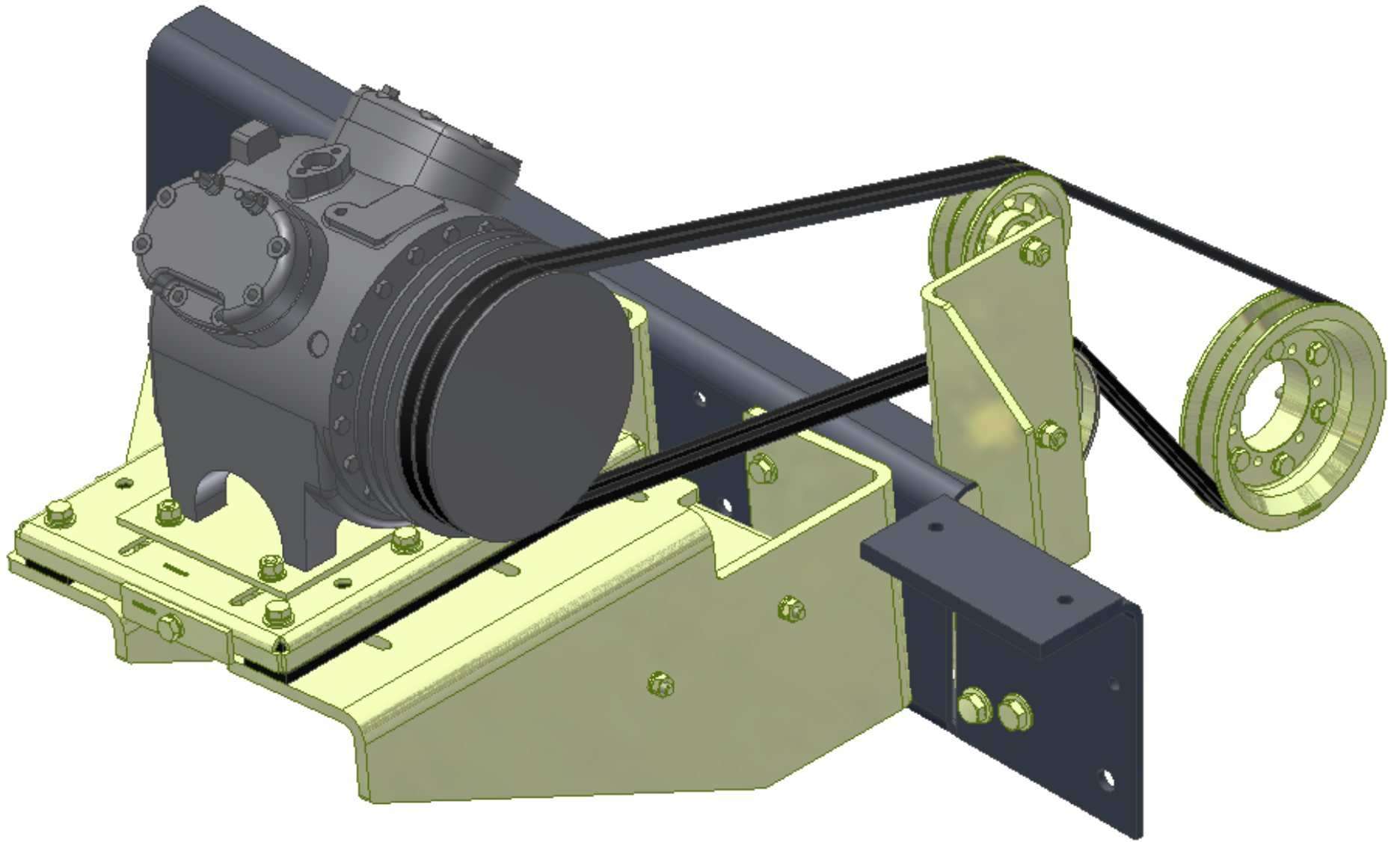
ITEM	QTY	UOM	DATE	NUMBERS	DESCRIPTION
48	1	EACH		WLQ10000	WASHER, LOCK, 5/8", 8, PLT
47	1	EACH		WLP12000	WASHER, LOCK, 3/4", 5, PLT
46	14	EACH		WLP08000	WASHER, LOCK, 1/2", 5, PLT
45	4	EACH		WLP07000	WASHER, LOCK, 7/16", 5, PLT
44	2	EACH		WLA12000	WASHER, LOCK, 12mm, 8.8, PLT
43	4	EACH		WLA10000	WASHER, LOCK, 10mm, 8.8, PLT
42	2	EACH		WFL20000	WASHER, FLAT, 3/4", 8, PLT
41	4	EACH		WFO10000	WASHER, FLAT, 5/8", 8, PLT
40	18	EACH		WFO08000	WASHER, FLAT, 1/2", 8, PLT
39	4	EACH		WFO7000	WASHER, FLAT, 7/16", 8, PLT
38	2	EACH		WFA12000	WASHER, FLAT, 12mm, 8.8, PLT
37	14	EACH		WFA10000	WASHER, FLAT, 10mm, 8.8, PLT
36	2	EACH		SLV17012	SLEEVE, PULLEY, 15.96 x 22.23 mm x12.19
35	2	EACH		SC314912	SPACER, COIL, 58x14.9 mm x 31.80 x 12.8
34	1	EACH		PUL76022	PULLEY, CRANK, NAV DT, 7.5L, 28/8" DSA
33	1	EACH		PMA06001	PULLEY, ASSY, IDLER, 8/16, 6", STL, PLT
32	1	EACH		PA05012	PULLEY, ASSY, IDLER, 8/16, 6", STL, PLT
31	1	EACH		NTP12000	NUT, HEX, 3/4-10UNC, 5, PLT
30	1	EACH		NTP08000	NUT, HEX, 1/2-13UNC, 5, PLT
29	4	EACH		NTP07000	NUT, HEX, 7/16-14UNC, 5, PLT
28	1	EACH		NTL10000	NUT, LOCK, HEX, 5/8-11UNC, 5, PLT
27	2	EACH		NTA12000	NUT, HEX, 12 x 1.75, 8.8, PLT
26	4	EACH		NTA10000	NUT, HEX, 10 x 1.5, 8.8, PLT
25	4	EACH		ICF08100	CAPSCREW, FH, 3/8-16 x 1", 9, PLT
24	1	EACH		BTQ12250	BOLT, HEX, 3/4-10UNC, 2.50", 8, PLT
23	2	EACH		BTQ10300	BOLT, HEX, 5/8-10UNC x 3.00, 8, PLT
22	1	EACH		BTQ10250	BOLT, HEX, 5/8-11UNC, 2.50", 8, PLT
21	1	EACH		BTQ08451	BOLT, HEX, 1/2-20UNF x 4.50, 8, PLT
20	1	EACH		BTQ08301	BOLT, HEX, 1/2-20UNF x 3.00, 8, PLT
19	2	EACH		BTQ08201	BOLT, HEX, 1/2-20UNF x 2.00, 8, PLT
18	1	EACH		BTQ08200	BOLT, HEX, 1/2-13UNC x 2.00, 8, PLT
17	1	EACH		BTQ08151	BOLT, HEX, 1/2-20UNF x 1.50, 8, PLT
16	11	EACH		BTQ08126	BOLT, HEX, 1/2-20UNF x 1.25, 8, PLT
15	1	EACH		BTQ08053	BOLT, HEX, 1/2-13UNC x 6.50, 5, PLT, FT
14	2	EACH		BTQ12070	BOLT, HEX, 12 x 1.75 x 70mm, 10.9, PLT
13	6	EACH		BTQ10050	BOLT, HEX, 10 x 1.5 x 50mm, 10.9, PLT
12	4	EACH		BTQ10040	BOLT, HEX, 10 x 1.5 x 40mm, 10.9, PLT
11	1	EACH		BMN80061	BKT, DIAG, BRACE, RE300, '07
10	1	EACH		BMN80044	BKT, MAIN, IDLER PL, ICR, 2007
9	1	EACH		BMN80043	BKT, SPACER PLATE, ICR, 2007
8	1	EACH		BMN80042	BKT, MAIN, REAR PL, ICR, 2007
7	1	EACH		BMN80041	BKT, MAIN, FRONT PL, ICR, 2007
6	1	EACH		BMN80032	BKT, ADAPTER, PL, IC, RE300
5	1	EACH		BMN80031	BKT, MAIN, SLIDE, ASSY, 05K, IC, RE300
4	1	EACH		BMN80025	BKT, BACK, PL, SLIDE, IC, RE300
3	1	EACH		BMN80009	BKT, MAIN, BASE PL, IC, RE300
2	2	EACH		BMN80008	VIBRATION ISOLATOR, BAR, 16.50 x 2 x 1.50
1	2	EACH		BEL22743	BELT, 8 gr, 2743mm (108") (BX105)

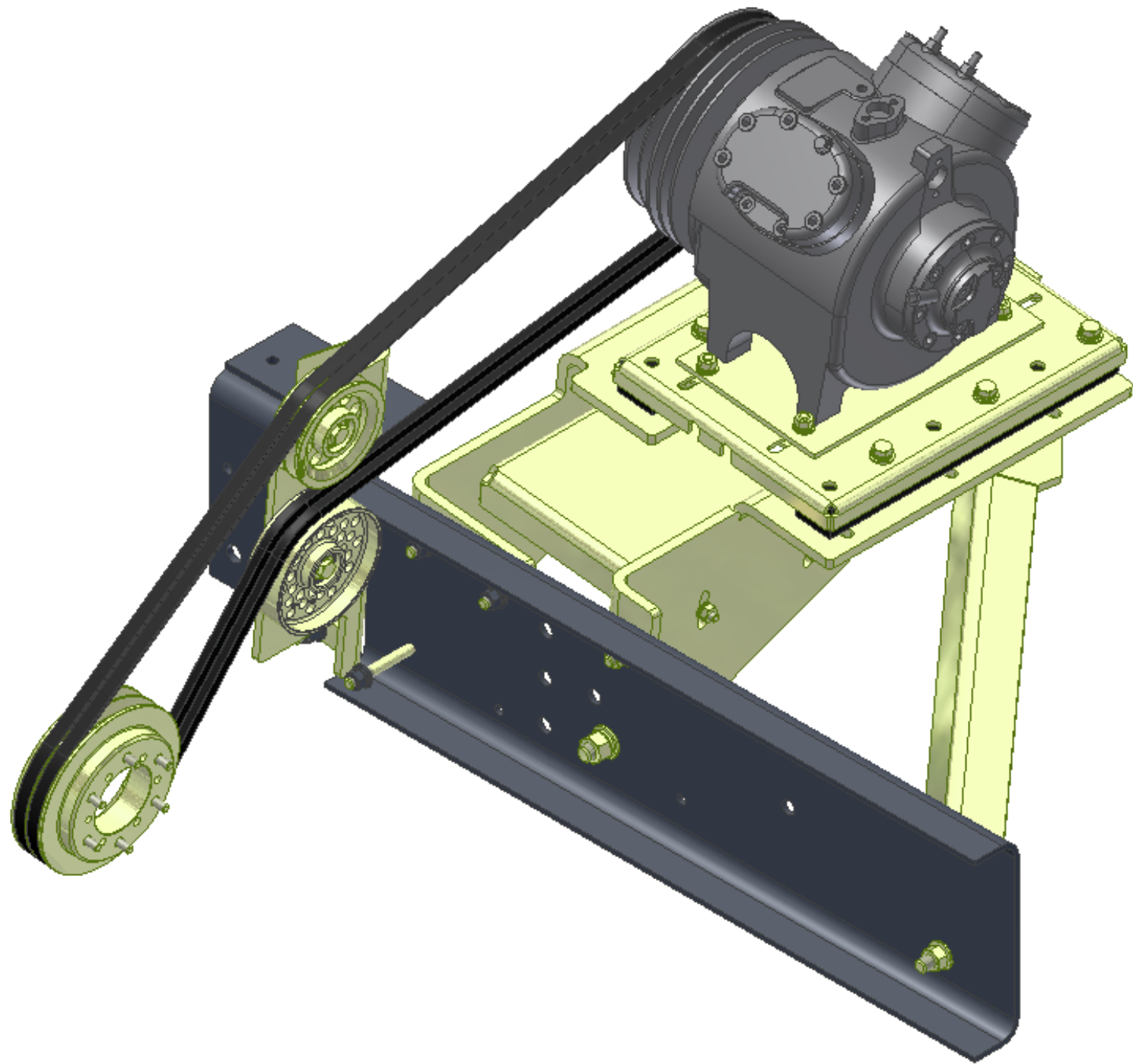
REV	CCN	DESCRIPTION	DATE	BY
1		INITIAL RELEASE	10/25/2007	SPS
2		GENERAL REVISION	10/25/2007	SPS
3		GENERAL REVISION	10/25/2007	SPS
4		GENERAL REVISION	10/25/2007	SPS
5		GENERAL REVISION	10/25/2007	SPS
6		GENERAL REVISION	10/25/2007	SPS
7		GENERAL REVISION	10/25/2007	SPS
8		GENERAL REVISION	10/25/2007	SPS
9		GENERAL REVISION	10/25/2007	SPS
10		GENERAL REVISION	10/25/2007	SPS
11		GENERAL REVISION	10/25/2007	SPS
12		GENERAL REVISION	10/25/2007	SPS
13		GENERAL REVISION	10/25/2007	SPS
14		GENERAL REVISION	10/25/2007	SPS
15		GENERAL REVISION	10/25/2007	SPS
16		GENERAL REVISION	10/25/2007	SPS
17		GENERAL REVISION	10/25/2007	SPS
18		GENERAL REVISION	10/25/2007	SPS
19		GENERAL REVISION	10/25/2007	SPS
20		GENERAL REVISION	10/25/2007	SPS
21		GENERAL REVISION	10/25/2007	SPS
22		GENERAL REVISION	10/25/2007	SPS
23		GENERAL REVISION	10/25/2007	SPS
24		GENERAL REVISION	10/25/2007	SPS
25		GENERAL REVISION	10/25/2007	SPS
26		GENERAL REVISION	10/25/2007	SPS
27		GENERAL REVISION	10/25/2007	SPS
28		GENERAL REVISION	10/25/2007	SPS
29		GENERAL REVISION	10/25/2007	SPS
30		GENERAL REVISION	10/25/2007	SPS
31		GENERAL REVISION	10/25/2007	SPS
32		GENERAL REVISION	10/25/2007	SPS
33		GENERAL REVISION	10/25/2007	SPS
34		GENERAL REVISION	10/25/2007	SPS
35		GENERAL REVISION	10/25/2007	SPS
36		GENERAL REVISION	10/25/2007	SPS
37		GENERAL REVISION	10/25/2007	SPS
38		GENERAL REVISION	10/25/2007	SPS
39		GENERAL REVISION	10/25/2007	SPS
40		GENERAL REVISION	10/25/2007	SPS
41		GENERAL REVISION	10/25/2007	SPS
42		GENERAL REVISION	10/25/2007	SPS
43		GENERAL REVISION	10/25/2007	SPS
44		GENERAL REVISION	10/25/2007	SPS
45		GENERAL REVISION	10/25/2007	SPS
46		GENERAL REVISION	10/25/2007	SPS
47		GENERAL REVISION	10/25/2007	SPS
48		GENERAL REVISION	10/25/2007	SPS

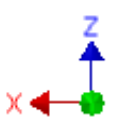
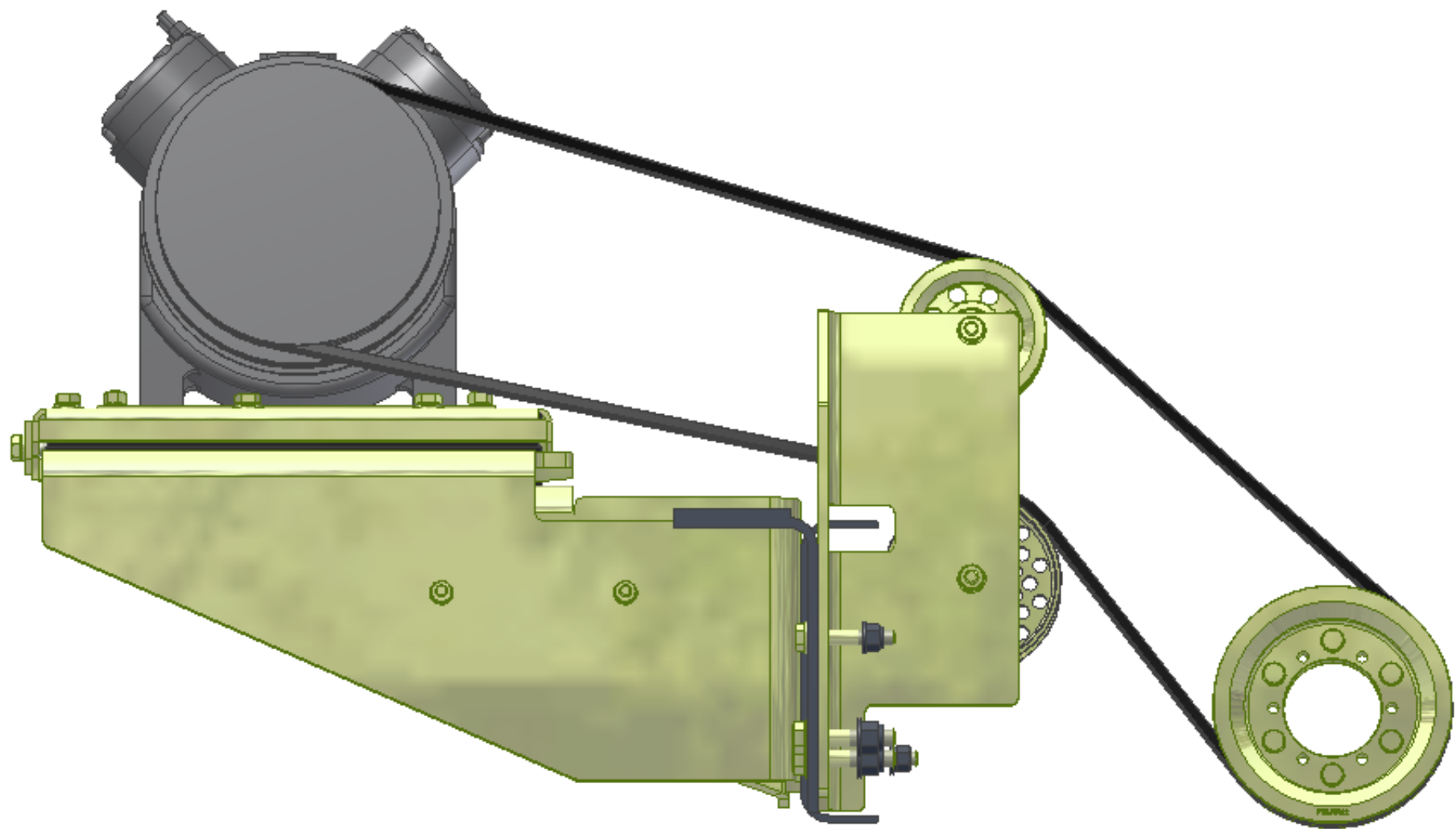
DATE: 10/25/2007  
BY: James Stewart  
APPROVED: [Signature]  
DATE: 10/25/2007  
BY: Ron Ingram  
APPROVED: [Signature]  
DATE: 10/25/2007  
BY: Date Mason

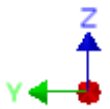
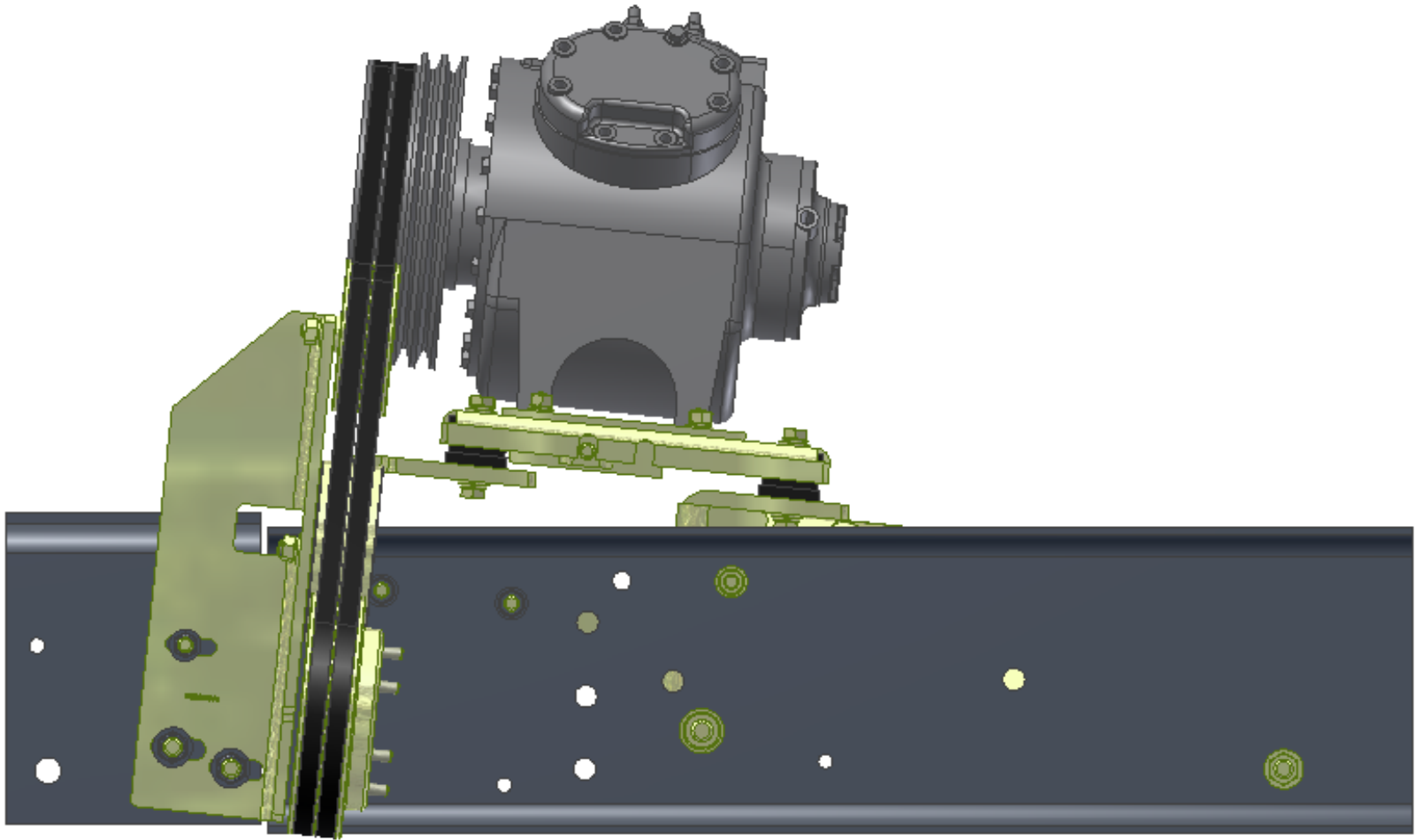
**TRANSARCTIC INC.**  
MT KIT, MFORCE DT, RE300, 05K, '07

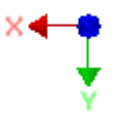
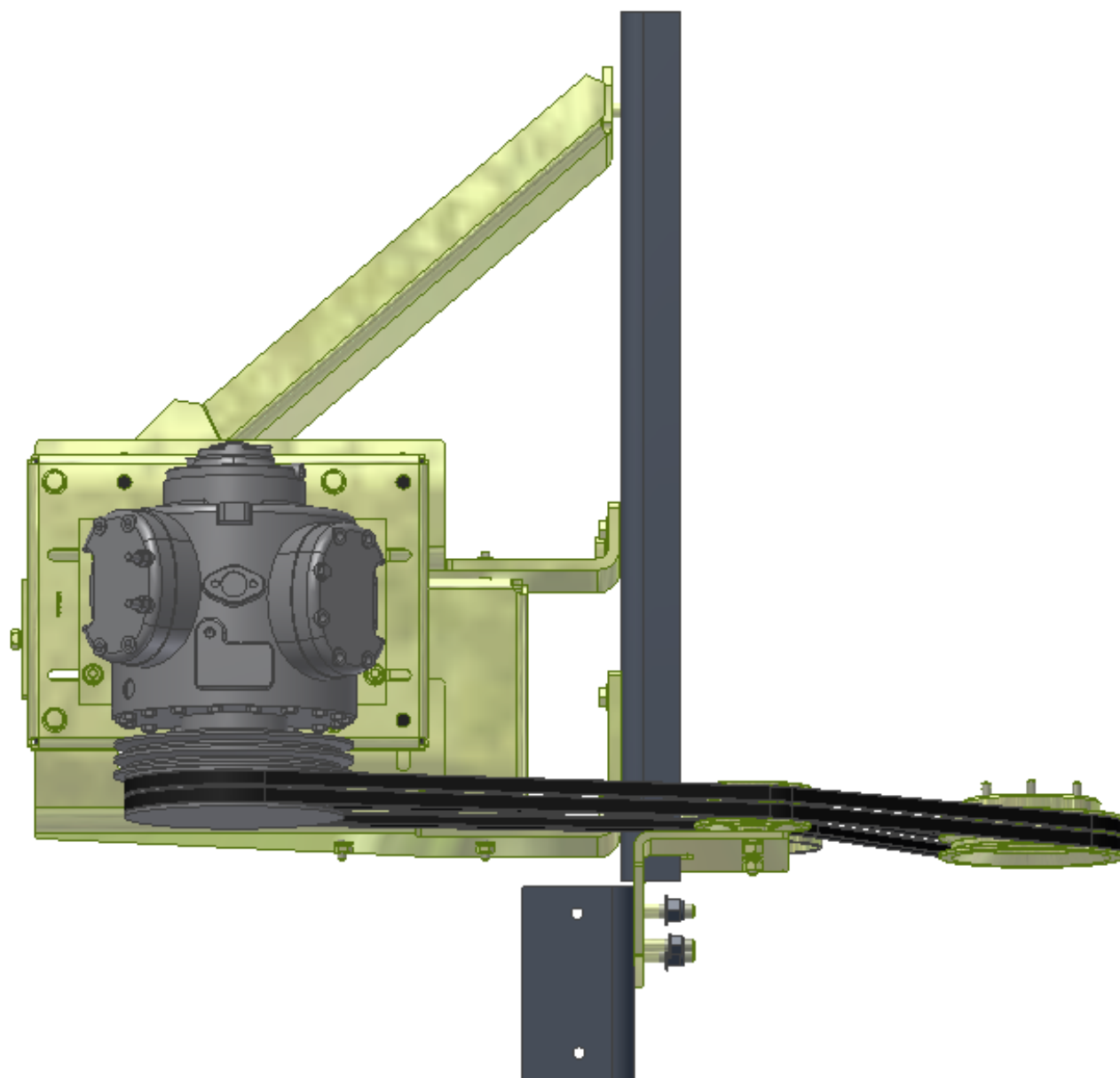
DWG NO: KMN82430  
REV: 5  
SCALE: 1:1  
SHEET: 1 OF 1



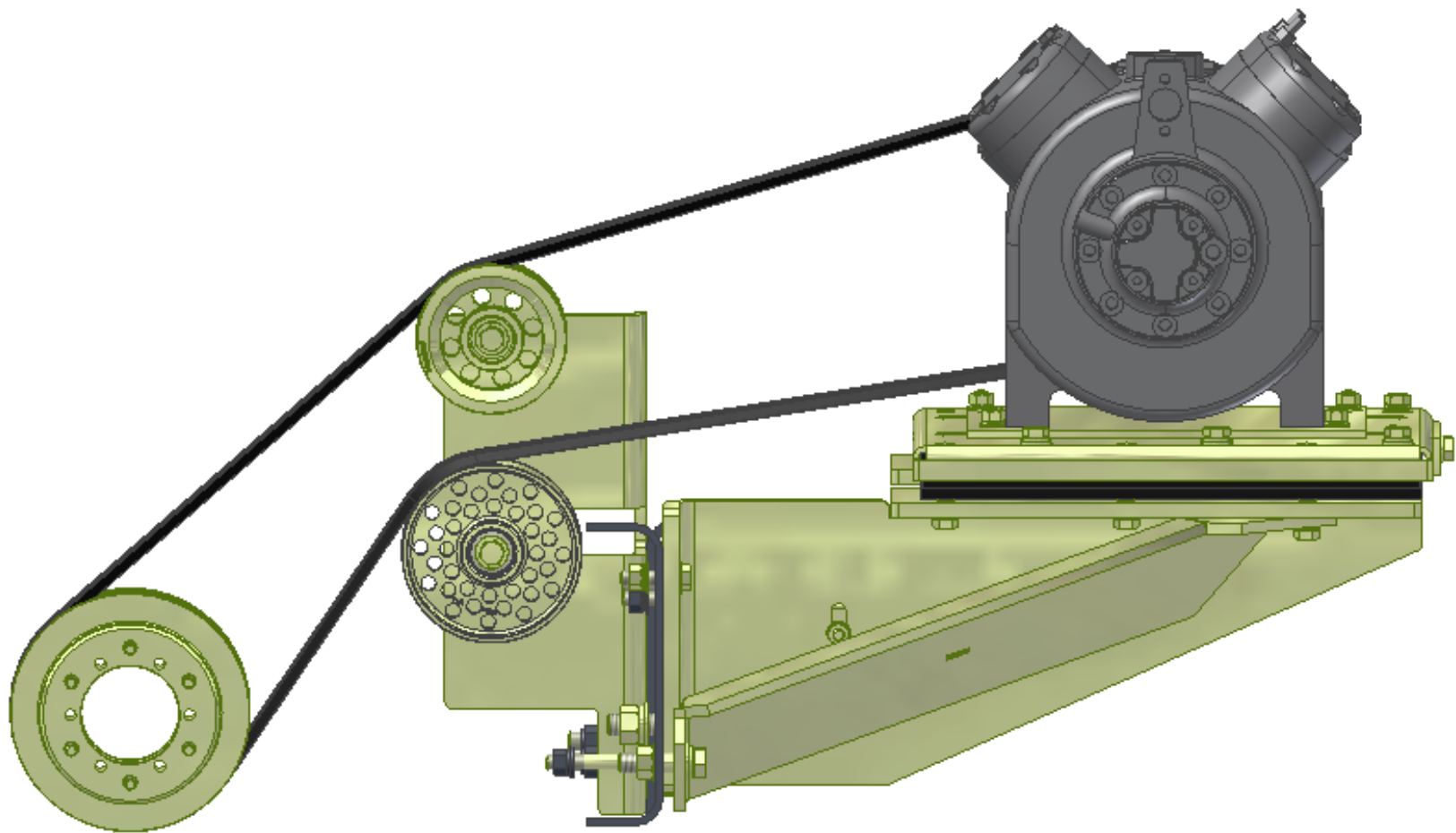












## **TransArctic A/C Compressor Mount Installation Disclaimer**

All compressor mounts should be installed by qualified and trained personnel using proper tools and equipment in safe working conditions following industry standard guidelines for motor vehicle service and repair.

The installer of any compressor mount purchased from TransArctic must undertake all responsibility of issues arising from that compressor bracket being installed on any vehicle. As well as insure that a **proper and sufficient ground** is established between the compressors' clutches and the vehicle's engine. Mount functionality, operation and durability can all be compromised by an incompetent installation.

Due to the many different situations, parameters and application criteria, which are beyond the compressor mount manufacturer's control, TransArctic does not warrant design, durability, or operational functionality of any compressor mount improperly installed by another party.

**With no implied guarantees it is the mount installer's strict responsibility to determine safety and functionality, of the compressor mount, at the time of installation.**

Please contact TransArctic with any issue arising from installation so we may better improve the product. If you have any reservations about the compressor mount integrity contact TransArctic immediately at 1-877-COLD-AIR.

**Mark OEM tensioner location**

**Install Kit**

**Check for Interferences**

**Check to ensure that the proper OEM tensioner orientation is maintained**

**Run engine with A/C system engaged for at least 10 minutes to run in belt**

**Check OEM tensioner orientation and adjust as required**

### **Responsabilidad limitada de TransArctic en la instalación del soporte del compresor**

Todos los soportes de los compresores deben ser instalados por personas calificadas y entrenadas, usando para ello los equipos y herramientas necesarios para esta labor en buenas condiciones y según las normas y guías para el servicio y/o reparación de motores de vehículos.

El instalador de los soportes comprados en TransArctic asume toda la responsabilidad de cualquier problema que surga en el soporte del compresor al vehículo; de igual manera es responsable que el cable a tierra sea conectado entre el embrague del compresor y el motor del vehículo.

Se advierte que el buen funcionamiento y la durabilidad del soporte pueden ser comprometidos por defectos en su instalación.

Debido a las diversas situaciones que se puedan presentar fuera del control del fabricante, TransArctic no garantiza el diseño, la durabilidad o el correcto funcionamiento de cualquier equipo inapropiadamente instalado por terceros.

**Esta sobreentendido que el Instalador del montaje del compresor es estrictamente responsable de la seguridad y funcionamiento del equipo en el momento de la instalación.**

Si tuviera algún problema o duda acerca de la instalación del soporte del compresor pongase en contacto inmediatamente con TransArctic al teléfono 1-877-COLD-AIR de modo que podamos mejorar nuestro producto.

**Note la ubicación del medidor de tensión OEM**

**Instale el equipo**

**Controlar si hay interferencias.**

**Asegure que el medidor de tensión mantenga la orientación justa.**

**Encienda el motor por lo menos 10 minutos con el sistema A/C enganchado para que la correa corra**

**Controle la orientación justa del medidor de tensión y ajuste a las condiciones requeridas del fabricante**