

# Bill of Materials Listing

TransArctic Canada Inc.

6/14/2019  
Page 1 of 1

Product Number	Description	Rev#	Date	Weight	Uof M	Yield
Line	Component Prod#	Description	Bin	Unit	Qty	
<b>KMC62660</b>		<b>Mt Kit, ISB, 6.7L, BBRE, 2 TM-21, '07</b>	<b>0</b>	<b>11/16/2007</b>	<b>15.12</b>	<b>0</b>
10	BEL11156	Belt, A gr, 1156mm (45.5") (17455)		each	1	
20	BMC59033	Bkt, Main, Weldmt, ISB, A3FE		each	1	
30	BMC59035	Bkt, Cradle, BTM, 87mm, ISB, A3FE		each	1	
40	BMC59037	Bkt, Spacer, Bar, ISB, A3FE		each	1	
50	PUL10094	Pulley, Idler, SA,94d x 18w,Blk (89020)		each	1	
60	PUL67002	Pulley, Fan, ADD-ON, Cummins, ISB,6.7,SA		each	1	
70	SCD12717	Spacer, Col, Drl, 12.7mm x 25.4o x17i		.	1	
80	SLV17010	Sleeve, Pulley, 16.9o x 22.23mm x 10.32i		each	1	
90	TEN00002	Tensioner, Clockwise, 90°, 3.5"/4.5"		each	1	
100	KBC52652	Bag Kit, Fasteners, KMC5xx52/6xx71		each	1	

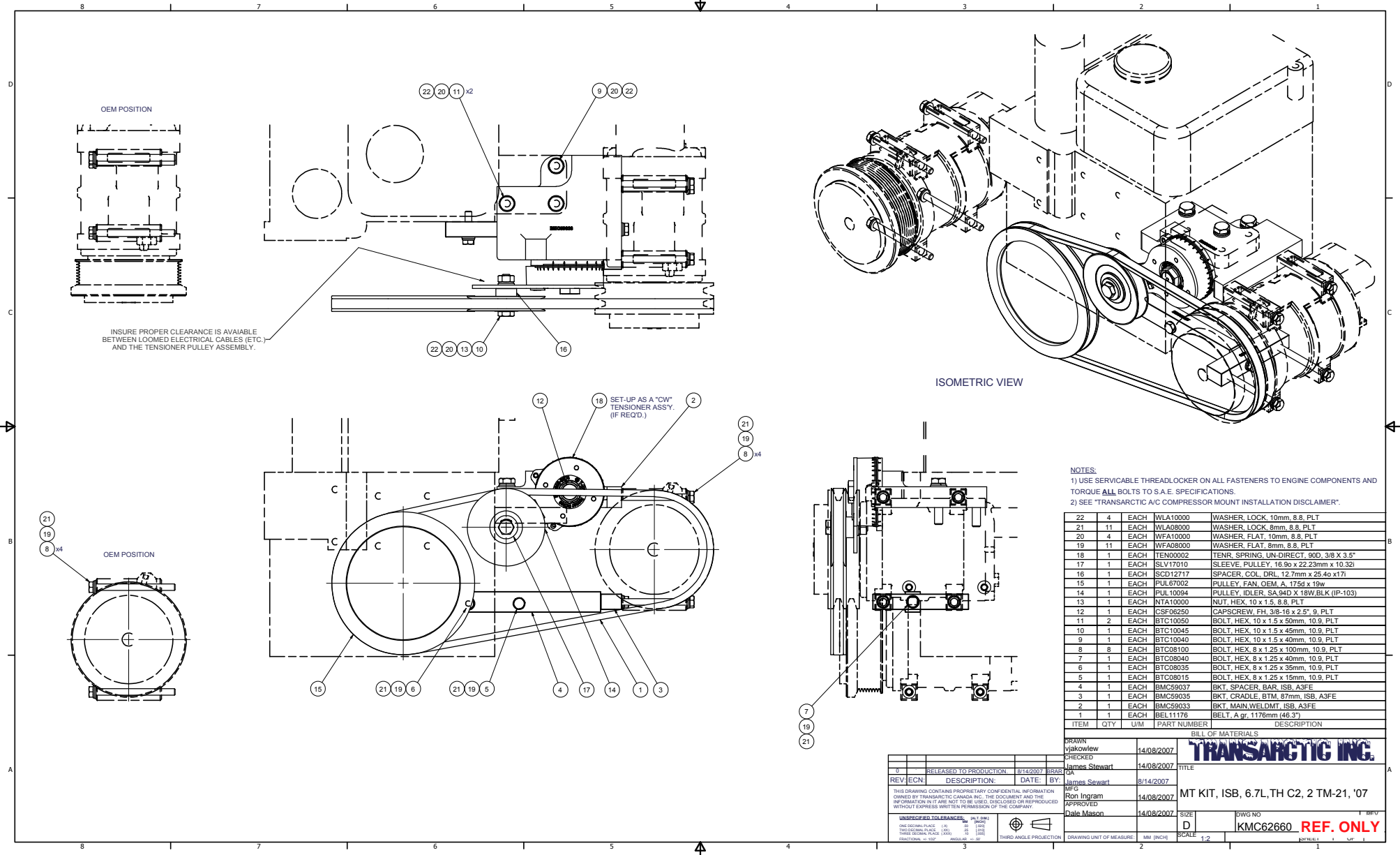
TEN00002 to be set-up as CW rotation @ 3.5" CTL base to CTL pulley.  
(Drill hole @ 1".)

# Bill of Materials Listing

TransArctic Canada Inc.

6/14/2019  
Page 1 of 1

Product Number		Description	Rev#	Date	Weight	Uof M	Yield
Line	Component Prod#	Description	Bin	Unit	Qty		
<b>KBC52652</b>		<b>Bag Kit, Fasteners, KMC5xx52/6xx71</b>		<b>7/26/2006</b>	<b>1.47</b>		<b>0</b>
10	BTC10050	Bolt, Hex, 10 x 1.5 x 50mm, 10.9, Plt		each	2		
20	BTC10045	Bolt, Hex, 10 x 1.5 x 45mm, 10.9, Plt,FT		each	1		
25	BTC10040	Bolt, Hex, 10 x 1.5 x 40mm, 10.9, Plt,FT		each	1		
30	BTC08100	Bolt, Hex, 8 x 1.25 x 100mm, 10.9, Plt		each	8		
40	BTC08040	Bolt, Hex, 8 x 1.25 x 40mm, 10.9, Plt,FT		each	1		
50	BTC08035	Bolt, Hex, 8 x 1.25 x 35mm, 10.9, Plt,FT		each	1		
60	BTC08015	Bolt, Hex, 8 x 1.25 x 15mm, 10.9, Plt		each	1		
70	CSF06250	Capscrew, FH, 3/8-16 x 2.5", Alloy, Plt		each	1		
80	NTA10000	Nut, Hex, 10 x 1.5, 8.8, Plt		each	1		
90	WFA08000	Washer, Flat, 8mm, 8.8, Plt		each	11		
100	WFA10000	Washer, Flat, 10mm, 8.8, Plt		each	4		
110	WLA08000	Washer, Lock, 8mm, 8.8, Plt		each	11		
120	WLA10000	Washer, Lock, 10mm, 8.8, Plt		each	4		



NOTES:  
 1) USE SERVICABLE THREADLOCKER ON ALL FASTENERS TO ENGINE COMPONENTS AND TORQUE ALL BOLTS TO S.A.E. SPECIFICATIONS.  
 2) SEE 'TRANSACTIC A/C COMPRESSOR MOUNT INSTALLATION DISCLAIMER'.

ITEM	QTY	U/M	PART NUMBER	DESCRIPTION
22	4	EACH	WLA10000	WASHER, LOCK, 10mm, 8.8, PLT
21	11	EACH	WLA08000	WASHER, LOCK, 8mm, 8.8, PLT
20	4	EACH	WFA10000	WASHER, FLAT, 10mm, 8.8, PLT
19	11	EACH	WFA08000	WASHER, FLAT, 8mm, 8.8, PLT
18	1	EACH	TEN00002	TENR, SPRING, UN-DIRECT, 90D, 3/8 X 3.5"
17	1	EACH	SLV17010	SLEEVE, PULLEY, 16.90 x 22.23mm x 10.32t
16	1	EACH	SCD12717	SPACER, COL, DRL, 12.7mm x 25.40 x 17t
15	1	EACH	PUL67002	PULLEY, FAN, OEM, A, 175d x 19w
14	1	EACH	PUL10084	PULLEY, IDLER, SA, 94D X 18W, BLK (IP-103)
13	1	EACH	NTA10000	NUT, HEX, 10 x 1.5, 8.8, PLT
12	1	EACH	CSF06250	CAPSCREW, FH, 3/8-16 x 2.5", 9, PLT
11	2	EACH	BTC10050	BOLT, HEX, 10 x 1.5 x 50mm, 10.9, PLT
10	1	EACH	BTC10045	BOLT, HEX, 10 x 1.5 x 45mm, 10.9, PLT
9	1	EACH	BTC10040	BOLT, HEX, 10 x 1.5 x 40mm, 10.9, PLT
8	8	EACH	BTC08100	BOLT, HEX, 8 x 1.25 x 100mm, 10.9, PLT
7	1	EACH	BTC08040	BOLT, HEX, 8 x 1.25 x 40mm, 10.9, PLT
6	1	EACH	BTC08035	BOLT, HEX, 8 x 1.25 x 35mm, 10.9, PLT
5	1	EACH	BTC08015	BOLT, HEX, 8 x 1.25 x 15mm, 10.9, PLT
4	1	EACH	BMC59037	BKT, SPACER BAR, ISB, A3FE
3	1	EACH	BMC59036	BKT, CRADLE, BTM, 87mm, ISB, A3FE
2	1	EACH	BMC59033	BKT, MAIN WELD, ISB, A3FE
1	1	EACH	BEL11176	BELT, A gr, 1176mm (46.3")
ITEM	QTY	U/M	PART NUMBER	DESCRIPTION

TRANSACTIC INC.

DESIGN	vikowlew	14/08/2007
CHECKED	James Stewart	14/08/2007
RELEASED TO PRODUCTION	8/14/2007	DATE: BY: James Stewart
REV	ECN	DESCRIPTION
0		
THIS DRAWING CONTAINS PROPRIETARY CONFIDENTIAL INFORMATION OWNED BY TRANSACTIC CANADA INC. THE DOCUMENT AND THE INFORMATION IN IT ARE NOT TO BE USED, DISCLOSED OR REPRODUCED WITHOUT EXPRESS WRITTEN PERMISSION OF THE COMPANY.		
UNDESIGNED TOLERANCES: ALL DIMS		
ONE DECIMAL PLACE (10)	MM (INCH)	0.1 (0.005)
TWO DECIMAL PLACE (20)	MM (INCH)	0.05 (0.0025)
THREE DECIMAL PLACE (30)	MM (INCH)	0.025 (0.001)
FOUR DECIMAL PLACE (40)	MM (INCH)	0.01 (0.0005)
FIVE DECIMAL PLACE (50)	MM (INCH)	0.005 (0.00025)
SIX DECIMAL PLACE (60)	MM (INCH)	0.0025 (0.0001)
SEVEN DECIMAL PLACE (70)	MM (INCH)	0.001 (0.00005)
EIGHT DECIMAL PLACE (80)	MM (INCH)	0.0005 (0.000025)
NINE DECIMAL PLACE (90)	MM (INCH)	0.00025 (0.00001)
TEN DECIMAL PLACE (100)	MM (INCH)	0.0001 (0.000005)
THIRD ANGLE PROJECTION		
DRAWING UNIT OF MEASURE	MM (INCH)	SCALE 1:2
DWG NO	KMC62660 REF. ONLY	

## **TransArctic A/C Compressor Mount Installation Disclaimer**

All compressor mounts should be installed by qualified and trained personnel using proper tools and equipment in safe working conditions following industry standard guidelines for motor vehicle service and repair.

The installer of any compressor mount purchased from TransArctic must undertake all responsibility of issues arising from that compressor bracket being installed on any vehicle. As well as insure that a **proper and sufficient ground** is established between the compressors' clutches and the vehicle's engine. Mount functionality, operation and durability can all be compromised by an incompetent installation.

Due to the many different situations, parameters and application criteria, which are beyond the compressor mount manufacturer's control, TransArctic does not warrant design, durability, or operational functionality of any compressor mount improperly installed by another party.

**With no implied guarantees it is the mount installer's strict responsibility to determine safety and functionality, of the compressor mount, at the time of installation.**

Please contact TransArctic with any issue arising from installation so we may better improve the product. If you have any reservations about the compressor mount integrity contact TransArctic immediately at 1-877-COLD-AIR.

**Mark OEM tensioner location**

**Install Kit**

**Check for Interferences**

**Check to ensure that the proper OEM tensioner orientation is maintained**

**Run engine with A/C system engaged for at least 10 minutes to run in belt**

**Check OEM tensioner orientation and adjust as required**

### **Responsabilidad limitada de TransArctic en la instalación del soporte del compresor**

Todos los soportes de los compresores deben ser instalados por personas calificadas y entrenadas, usando para ello los equipos y herramientas necesarios para esta labor en buenas condiciones y según las normas y guías para el servicio y/o reparación de motores de vehículos.

El instalador de los soportes comprados en TransArctic asume toda la responsabilidad de cualquier problema que surga en el soporte del compresor al vehículo; de igual manera es responsable que el cable a tierra sea conectado entre el embrague del compresor y el motor del vehículo.

Se advierte que el buen funcionamiento y la durabilidad del soporte pueden ser comprometidos por defectos en su instalación.

Debido a las diversas situaciones que se puedan presentar fuera del control del fabricante, TransArctic no garantiza el diseño, la durabilidad o el correcto funcionamiento de cualquier equipo inapropiadamente instalado por terceros.

**Esta sobreentendido que el Instalador del montaje del compresor es estrictamente responsable de la seguridad y funcionamiento del equipo en el momento de la instalación.**

Si tuviera algún problema o duda acerca de la instalación del soporte del compresor pongase en contacto inmediatamente con TransArctic al teléfono 1-877-COLD-AIR de modo que podamos mejorar nuestro producto.

**Note la ubicación del medidor de tensión OEM**

**Instale el equipo**

**Controlar si hay interferencias.**

**Asegure que el medidor de tensión mantenga la orientación justa.**

**Encienda el motor por lo menos 10 minutos con el sistema A/C enganchado para que la correa corra**

**Controle la orientación justa del medidor de tensión y ajuste a las condiciones requeridas del fabricante**