

Bill of Materials Listing

TransArctic Canada Inc.

2/27/2009
Page 1 of 1

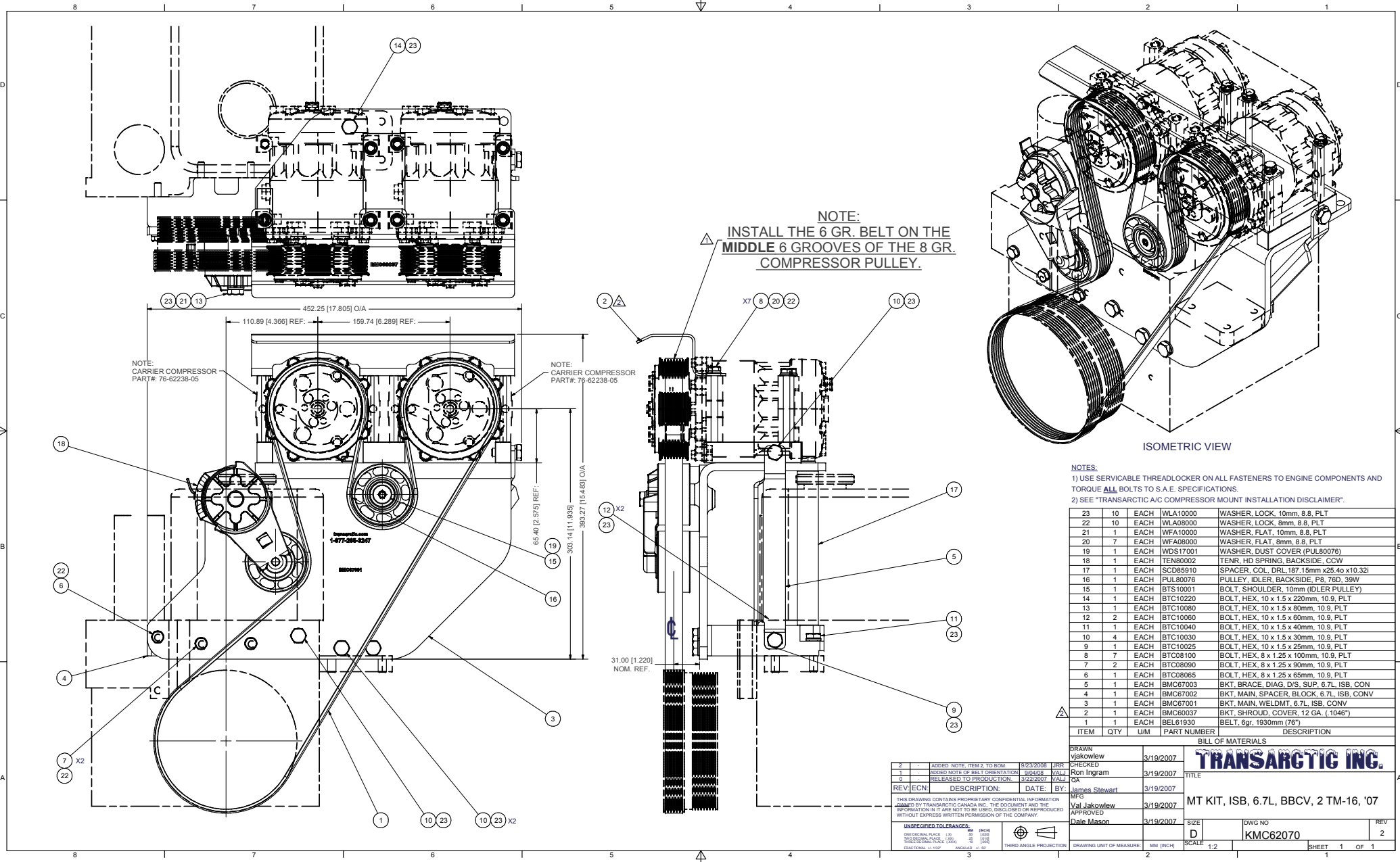
Product Number	Description	Date	Weight	Uof M	Yield
Line Component Prod#	Description	Bin Unit	Qty		
KMC62070	Mt Kit, ISB, 6.7L, BBCV, 2 TM-16, '07		3/16/2007	48.20	0
10	BEL61930		Belt, 6gr, 1930mm (76") (5060760)	each	1
15	BMC60037		Bkt, Shroud, Cover, 12 Ga. (.1046")	each	1
20	BMC67001		Bkt, Main, Weldmt, 6.7L, ISB, Conv	each	1
30	BMC67002		Bkt, Main, Spacer, Block, 6.7L, ISB,Conv	each	1
40	BMC67003		Bkt, Brace, Diag, D/S, Sup,6.7,LISB,Conv	each	1
50	SCD85910		Spacer, Col,Drl,187.15mm x25.4o x10.32i	each	1
60	PUL80076		Pulley, Idler, Backside, P8, 76d (89062)	each	1
70	TEN80002		Tenr, HD Spring, BackSide, CCW (89200A)	each	1
80	KBC62670		Bag Kit, Fasteners, KMC62670/KMC62070	each	1

Bill of Materials Listing

TransArctic Canada Inc.

2/10/2009
Page 1 of 1

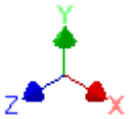
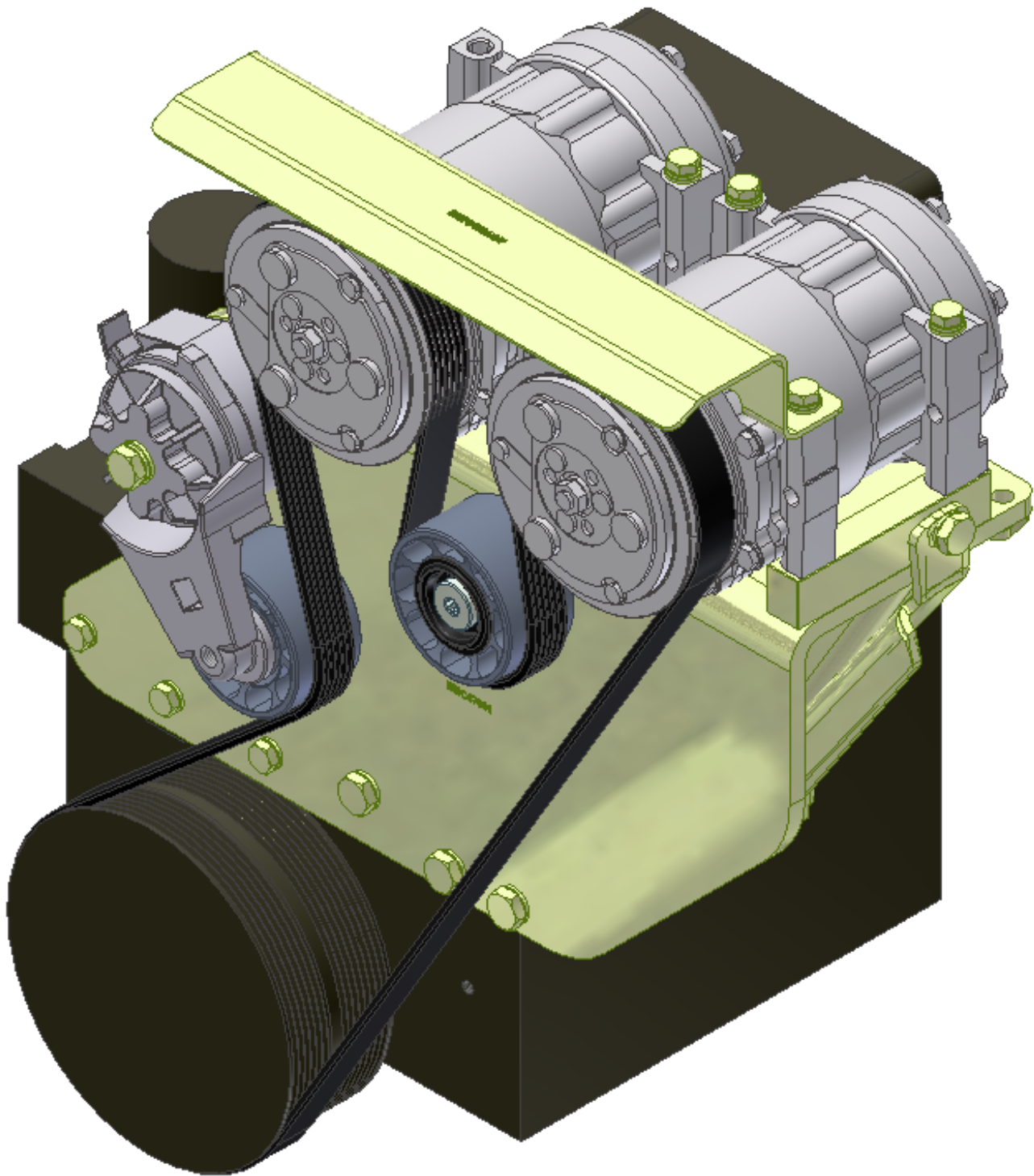
Product Number	Description	Date	Weight	Uof M	Yield
Line Component Prod#	Description	Bin Unit	Qty		
KBC62670	Bag Kit, Fasteners, KMC62670/KMC62070		3/31/2006	2.06	0
10	BTS10001	Bolt, Shoulder, 10mm (89064)	each	1	
12	BTC10220	Bolt, Hex, 10 x 1.5 x 220mm, 10.9, Plt	each	1	
15	BTC10080	Bolt, Hex, 10 x 1.5 x 80mm, 10.9, FT,Plt	each	1	
17	BTC10060	Bolt, Hex, 10 x 1.5 x 60mm, 10.9, Plt	each	2	
20	BTC10040	Bolt, Hex, 10 x 1.5 x 40mm, 10.9, Plt	each	1	
30	BTC10030	Bolt, Hex, 10 x 1.5 x 30mm, 10.9, Plt	each	4	
35	BTC10025	Bolt, Hex, 10 x 1.5 x 25mm, 10.9, Plt	each	1	
40	BTC08100	Bolt, Hex, 8 x 1.25 x 100mm, 10.9, Plt	each	7	
50	BTC08090	Bolt, Hex, 8 x 1.25 x 90mm, 10.9, Plt	each	2	
60	BTC08065	Bolt, Hex, 8 x 1.25 x 65mm, 10.9, Plt	each	1	
100	WFA08000	Washer, Flat, 8mm, 8.8, Plt	each	7	
105	WFA10000	Washer, Flat, 10mm, 8.8, Plt	each	1	
110	WLA08000	Washer, Lock, 8mm, 8.8, Plt	each	10	
120	WLA10000	Washer, Lock, 10mm, 8.8, Plt	each	11	

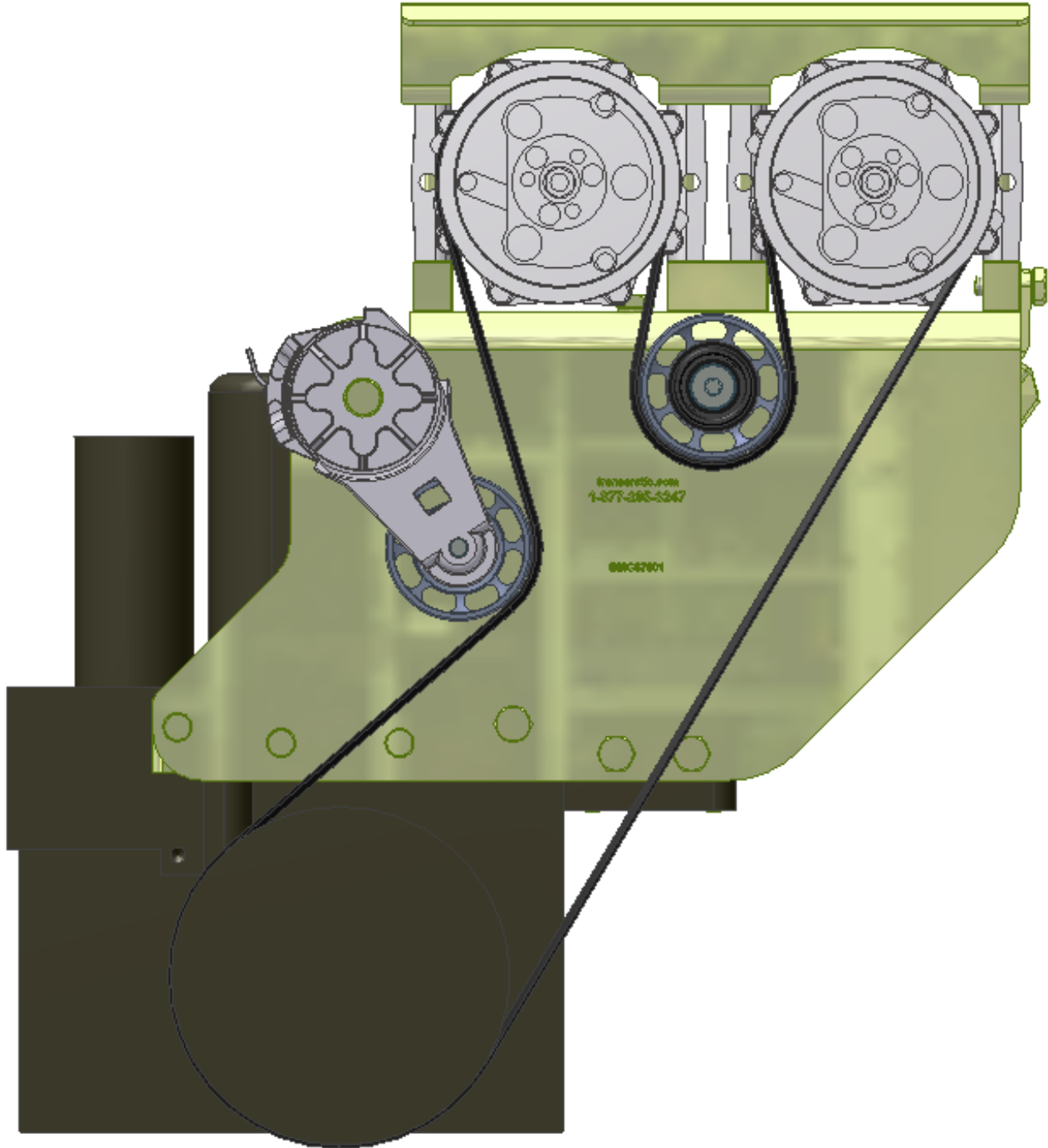


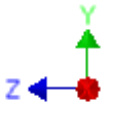
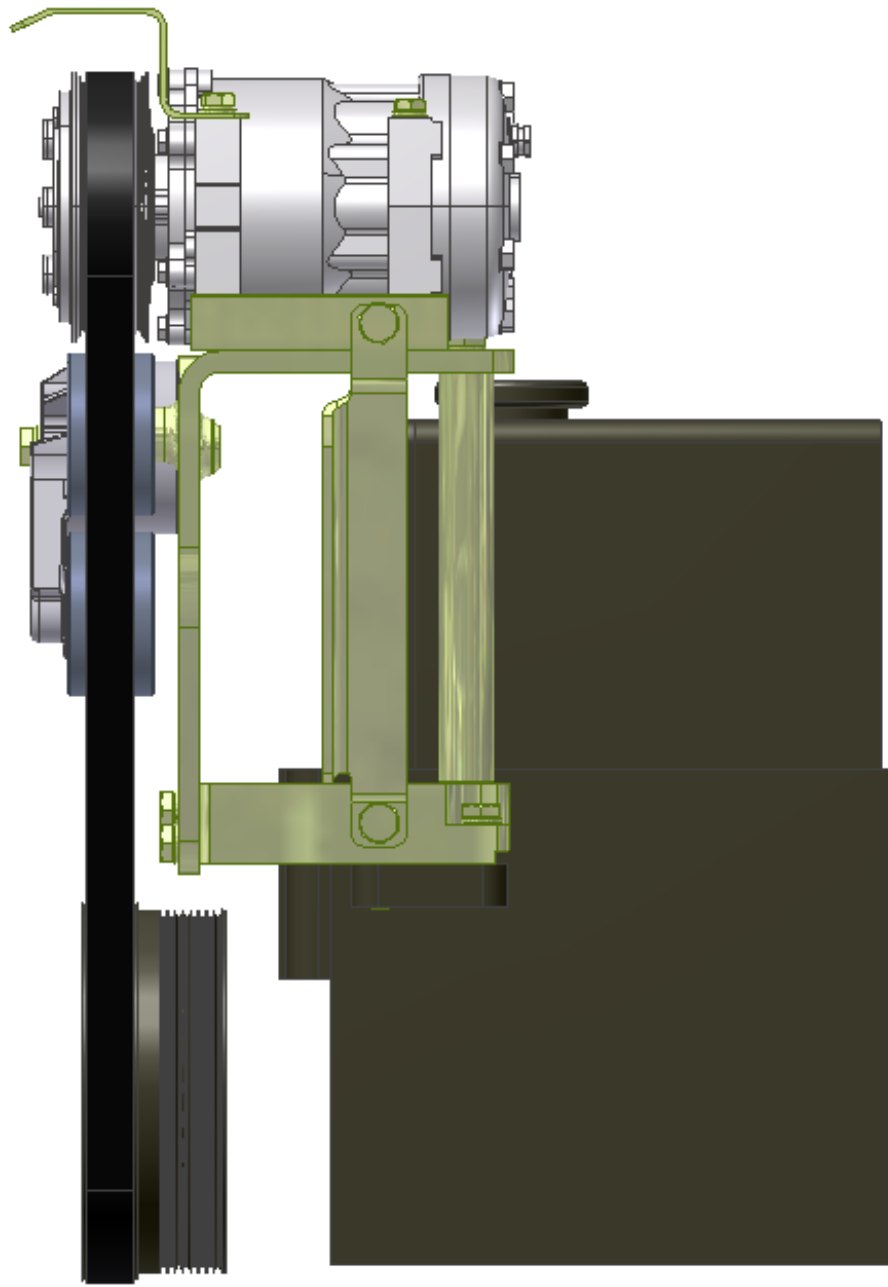
NOTES:
 1) USE SERVICABLE THREADLOCKER ON ALL FASTENERS TO ENGINE COMPONENTS AND TORQUE ALL BOLTS TO S.A.E. SPECIFICATIONS.
 2) SEE "TRANSARGTIC A/C COMPRESSOR MOUNT INSTALLATION DISCLAIMER".

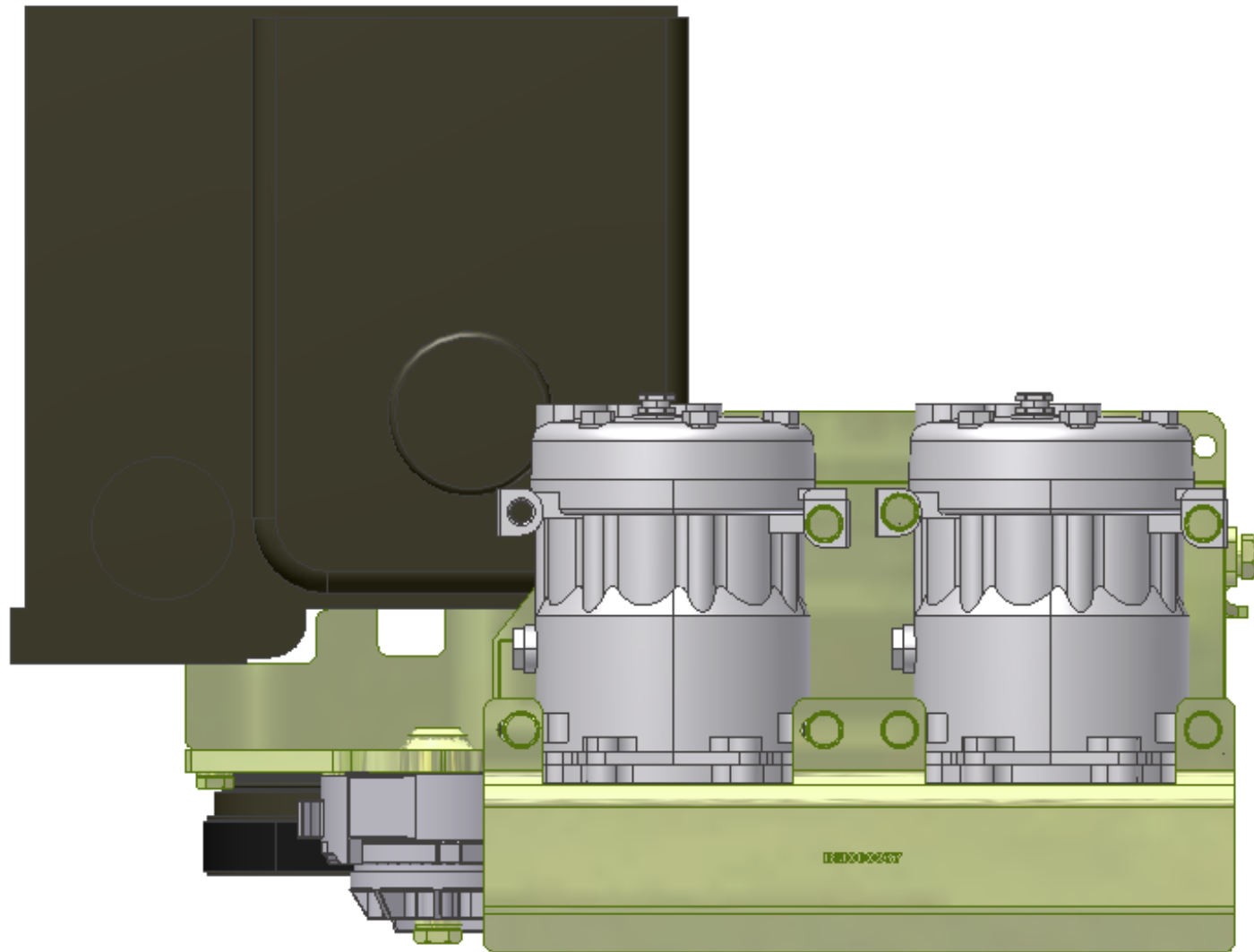
ITEM	QTY	U/M	PART NUMBER	DESCRIPTION
23	10	EACH	WLA10000	WASHER, LOCK, 10mm, 8.8, PLT
22	10	EACH	WLA08000	WASHER, LOCK, 8mm, 8.8, PLT
21	1	EACH	WFA10000	WASHER, FLAT, 10mm, 8.8, PLT
20	7	EACH	WFA08000	WASHER, FLAT, 8mm, 8.8, PLT
19	1	EACH	WDS17001	WASHER, DUST COVER (PUL80076)
18	1	EACH	TENR0002	TENR, HD SPRING, BACKSIDE, Cc/W
17	1	EACH	SCD85510	SPACER, COL, DRL, 187, 15mm x25.4o x10.32i
16	1	EACH	PUL80076	PULLEY, IDLER, BACKSIDE, P8, 76D, 39W
15	1	EACH	BTS10001	BOLT, SHOULDER, 10mm (IDLER PULLEY)
14	1	EACH	BTC10220	BOLT, HEX, 10 x 1.5 x 220mm, 10.9, PLT
13	1	EACH	BTC10080	BOLT, HEX, 10 x 1.5 x 80mm, 10.9, PLT
12	2	EACH	BTC10060	BOLT, HEX, 10 x 1.5 x 60mm, 10.9, PLT
11	1	EACH	BTC10040	BOLT, HEX, 10 x 1.5 x 40mm, 10.9, PLT
10	4	EACH	BTC10030	BOLT, HEX, 10 x 1.5 x 30mm, 10.9, PLT
9	1	EACH	BTC10025	BOLT, HEX, 10 x 1.5 x 25mm, 10.9, PLT
8	7	EACH	BTC08100	BOLT, HEX, 8 x 1.25 x 100mm, 10.9, PLT
7	2	EACH	BTC08090	BOLT, HEX, 8 x 1.25 x 90mm, 10.9, PLT
6	1	EACH	BTC08065	BOLT, HEX, 8 x 1.25 x 65mm, 10.9, PLT
5	1	EACH	BMC67003	BKT, BRACE, DIAG, D/S, SUP, 6.7L, ISB, CON
4	1	EACH	BMC67002	BKT, MAIN, SPACER, BLOCK, 6.7L, ISB, CONV
3	1	EACH	BMC67001	BKT, MAIN, WELDMT, 6.7L, ISB, CONV
2	1	EACH	BMC60037	BKT, SHROUD, COVER, 12 GA, (1046*)
1	1	EACH	BEL61930	BELT, 6gr, 1930mm (76")

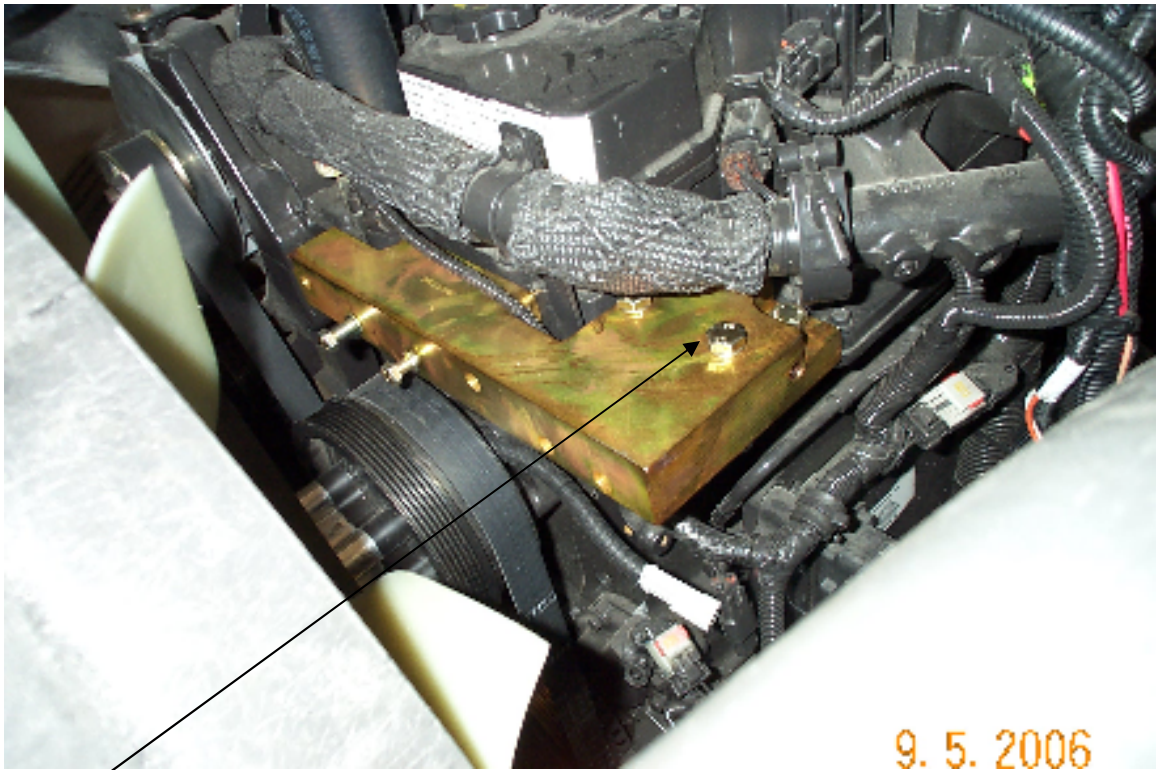
BILL OF MATERIALS				
DRAWN	HJK/ew	3/19/2007	TRANSARGTIC INC.	
CHECKED	Ron Ingram	3/19/2007		
REV	ECN	DESCRIPTION	DATE	BY
1		ADDED NOTE, ITEM 2 TO BOM	3/23/2008	JRR
1		ADDED NOTE OF BELT ORIENTATION	3/04/08	KAL
1		RELEASED TO PRODUCTION	3/22/2007	VAL
				James Stewart
				WFG
				Val Jakowlew
				APPROVED
				Dale Mason
				3/19/2007
UNSPECIFIED TOLERANCES:				
ONE DECIMAL PLACE	±.05	MM	ISO	
TWO DECIMAL PLACE	±.005	MM	ISO	
THREE DECIMAL PLACE	±.002	MM	ISO	
FRAC TIONS	±.001	INCHES	ASME	
				THIRD ANGLE PROJECTION
DRAWING UNIT OF MEASURE		MM (INCH)		
SCALE	1:2			
DWG NO	KMC62070	REV	2	
SHEET	1	OF	1	



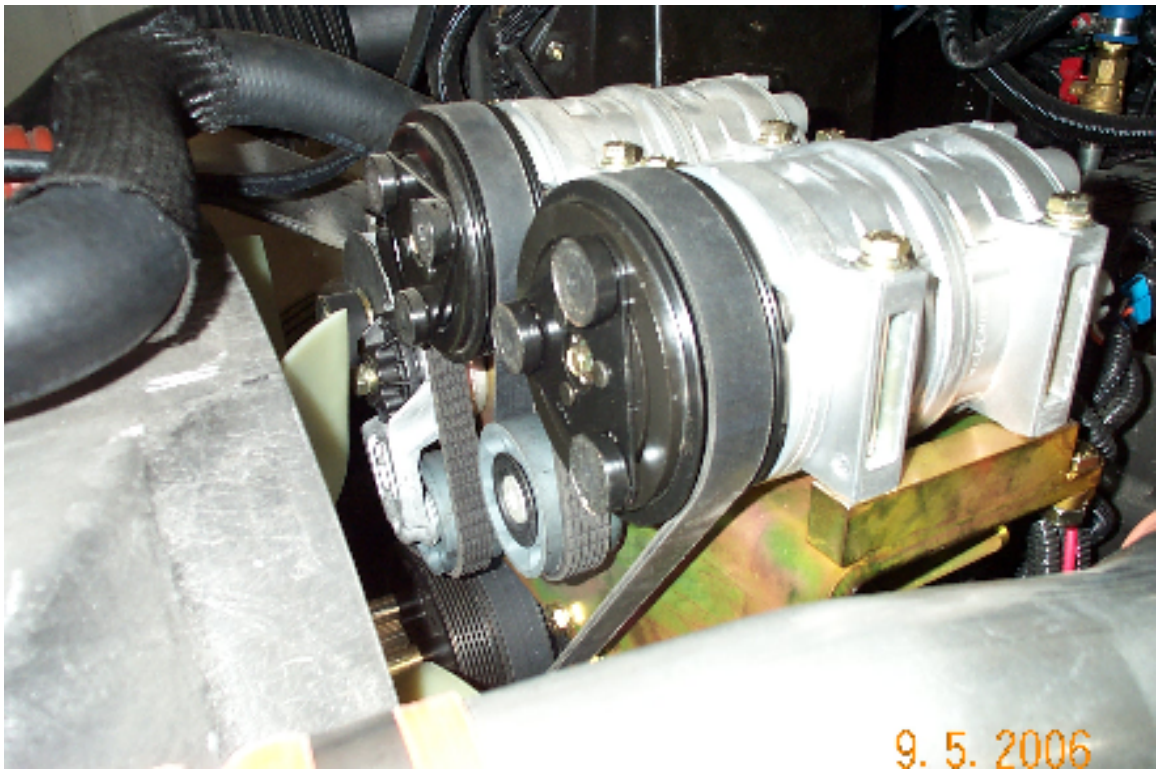








Install bolts finger tight to hold in place then put on Main Bracket



TransArctic A/C Compressor Mount Installation Disclaimer

All compressor mounts should be installed by qualified and trained personnel using proper tools and equipment in safe working conditions following industry standard guidelines for motor vehicle service and repair.

The installer of any compressor mount purchased from TransArctic must undertake all responsibility of issues arising from that compressor bracket being installed on any vehicle. As well as insure that a **proper and sufficient ground** is established between the compressors' clutches and the vehicle's engine. Mount functionality, operation and durability can all be compromised by an incompetent installation.

Due to the many different situations, parameters and application criteria, which are beyond the compressor mount manufacturer's control, TransArctic does not warrant design, durability, or operational functionality of any compressor mount improperly installed by another party.

With no implied guarantees it is the mount installer's strict responsibility to determine safety and functionality, of the compressor mount, at the time of installation.

Please contact TransArctic with any issue arising from installation so we may better improve the product. If you have any reservations about the compressor mount integrity contact TransArctic immediately at 1-877-COLD-AIR.