

# Bill of Materials Listing

TransArctic Canada Inc.

11/9/2020  
Page 1 of 1

Product Number	Date	Description	Uof M	Weight	Yield	
Line	Qty	Component Prod#	Rev#	Description	Bin	Unit
<b>KMC96597</b>	<b>4/25/2017</b>	<b>2 Mt Kit, ISL, HDX, TM-55/65, '17</b>				<b>1172.52</b>
5	1	PAC39131		Pack, Carton, 39" x 13" x 16.25", 51 BC		each
10	1	BEL32286		Belt, Banded B gr,2286mm (90")		each
20	1	BMC90017	2	Bkt, Found'n, TH HDX, 4xFC/ 4K40, '16		each
30	1	BMC90022	0	Bkt, Main, Idler, Weldm't, ISL, HDX, '16		each
35	1	BMZ00074	0	Bkt, Adapter, P/S, 4xFC To TM-55/65		each
40	1	BMZ01059	0	Bkt, Slide, Block, TH, HDX, '12		each
50	1	KBB00002	0	Kit, PS, Platform, Transit, ADM, '20		each
60	1	KPC89022	0	Kit, Pulley, ISL, 8.9L, 2B/X,'13		each
70	1	PUA05001	0	Pulley, Assy, Idler, B/S, 5", Stl, Plt		each
80	1	PUA05012	0	Pulley, Assy, Idler,B/BX gr,5", STL,Plt		each
90	1	SCD16012	1	Spacer, Col, Drl,16 mm x 34.9o x 12.3i		each
100	1	SCD21912	0	Spacer, Col, Drl,21.9mm x 25.4o x 12.3i		each
110	2	SLV17012	0	Sleeve, Pulley, 16.9o x 22.23mm x 12.32i		each
120	1	KBC96597	0	Bag Kit, Fasteners, KMC96597 & KMC96697		each

# Bill of Materials Listing

TransArctic Canada Inc.

6/2/2020  
Page 1 of 1

Product Number		Description	Rev#	Date	Weight	Uof M	Yield
Line	Component Prod#	Description	Bin	Unit	Qty		
<b>KBC96597</b>		<b>Bag Kit, Fasteners, KMC96597 &amp; KMC96697</b>	<b>0</b>	<b>7/14/2016</b>	<b>2.96</b>		<b>0</b>
10	BTC10045	Bolt, Hex, 10 x 1.5 x 45mm, 10.9, Plt,FT		each	3		
20	BTC12080	Bolt, Hex, 12 x 1.75 x 80mm, 10.9,Plt,FT		each	2		
30	BTQ06175	Bolt, Hex, 3/8-16unc, 1.75", 8, Plt		each	8		
40	BTQ08200	Bolt, Hex, 1/2-13unc, 2.0", 8, Plt		each	3		
45	CSF08150	Capscrew, FH, 1/2-13 x 1.50", Alloy, Plt		each	1		
47	CSF12036	Capscrew, FH, 12 x 1.75 x 35mm, 10.9,Plt		each	4		
50	NTA10000	Nut, Hex, 10 x 1.5, 8.8, Plt		each	3		
60	NTA12000	Nut, Hex, 12 x 1.75, 8.8, Plt		each	2		
70	NTQ06000	Nut, Hex, 3/8-16unc, 8, Plt		each	8		
80	NTQ08000	Nut, Hex, 1/2-13unc, 8, Plt		each	4		
90	WFA10002	Washer, Flat, 10mm, Hvy, 8.8, Plt		each	6		
100	WFA12002	Washer, Flat, 12mm, Hvy, 8.8, Plt		each	2		
110	WFQ08000	Washer, Flat, 1/2", 8, Plt		each	7		
120	WFS06002	Washer, Flat, 3/8", L9, Plt		each	16		
130	WLA10000	Washer, Lock, 10mm, 8.8, Plt		each	3		
140	WLA12000	Washer, Lock, 12mm, 8.8, Plt		each	2		
150	WLQ06000	Washer, Lock, 3/8", 8, Plt		each	8		
160	WLQ08000	Washer, Lock, 1/2", 8, Plt		each	4		

# Bill of Materials Listing

TransArctic Canada Inc.

6/3/2020  
Page 1 of 1

Product Number		Description	Rev#	Date	Weight	Uof M	Yield
Line	Component Prod#	Description	Bin	Unit	Qty		
<b>KBB00002</b>		<b>Kit, PS, Platform, Transit, ADM, '20</b>	<b>0</b>	<b>6/20/2012</b>	<b>75.91</b>		<b>0</b>
10	BMZ01034	Bkt, Spring, Support Arm, ADM, '12		each	1		
20	BMZ01035	Bkt, Main, Pivot, Ass'y, ADM Transit, '12		each	1		
30	BMZ01037	Bkt, Fork, Knuckle-Joint, Adm, '12		each	1		
40	BMZ01038	Bkt, Main, Base Pl, ADM, '12		each	1		
50	BMZ01040	Bkt, Ass'y, THRD Rod, Isolator, ADM, '12		each	1		
60	BMZ01041	Shaft Key, 5/16" SQ x .540" Long		each	2		
70	BMZ01042	Vibration Isolator, Bar, 9.63 x 2 x 1.50		each	2		
80	BMZ01044	Bkt, Cradle, Pivot, Adm Transit, '12		each	1		
90	BMZ01047	Bkt, Bar, Slide Nut, ADJ, Trans ADM, '12		each	2		
110	PIS01010	Shaft, Stl, Grease, ADM Transit, '12		each	1		
120	SPR00002	Spring, Comp, R/H, 110 x 50 x 8.4, Red		each	1		
130	WFS16001	Washer, Flat, Dbl Step, 17mm, 50mm, Plt		each	1		
140	WFS27001	Washer, Flat, Dbl Step, 27mm, 63.5, Plt		each	1		
150	KBB00025	Bag Kit, Fasteners, KBB00001		each	1		
160	KBB00026	Bag Kit, Fasteners, Assembly, KBB00001		each	1		

**NOTE:**

Use Blue "Loctite" on the (4) fasteners to fasten BMZ01034 in place. 1/2 -13 UNC grd. 8 bolts, c/w  
 L'whrs torque... used on the PIS01010 Shaft = 45 FT\*LBS.  
 (/VTS@ JAN-25-2019)

# Bill of Materials Listing

TransArctic Canada Inc.

6/3/2020  
Page 1 of 1

Product Number	Description	Rev#	Date	Weight	Uof M	Yield
Line	Component Prod#	Bin	Unit	Qty		
<b>KBB00025</b>	<b>Bag Kit, Fasteners, KBB00001/2</b>	<b>5</b>	<b>8/1/2012</b>	<b>1.61</b>		<b>0</b>
10	BTQ08126		each	6		
20	BTQ08150		each	1		
30	BTQ10351		each	1		
50	NTQ08000		each	1		
60	NTQ10000		each	2		
65	NTQ10001		each	1		
100	WFQ08000		each	8		
110	WFQ10000		each	2		
120	WLQ08000		each	7		
130	WLQ10000		each	2		

# Bill of Materials Listing

TransArctic Canada Inc.

6/3/2020  
Page 1 of 1

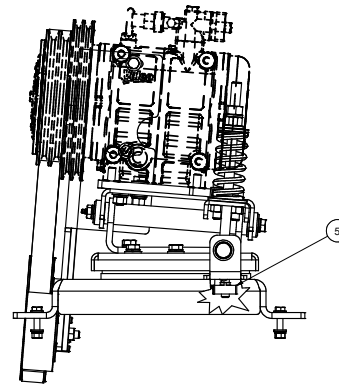
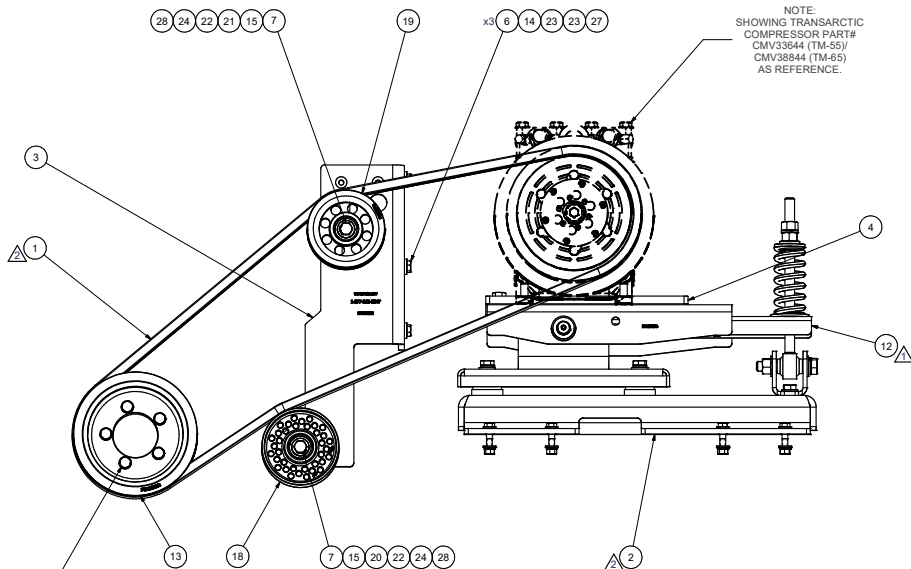
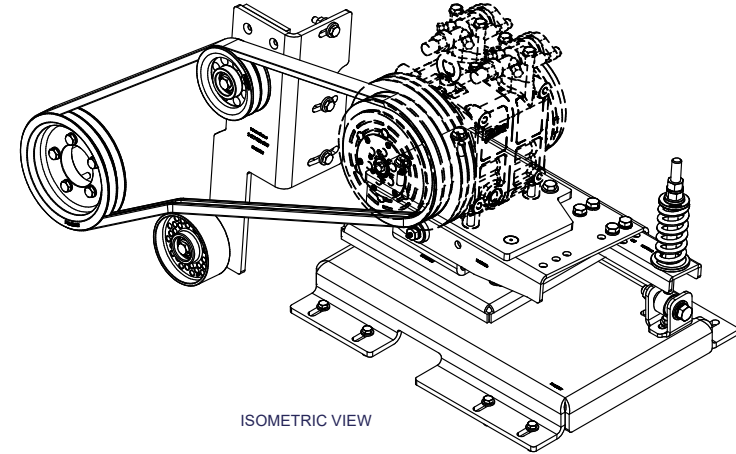
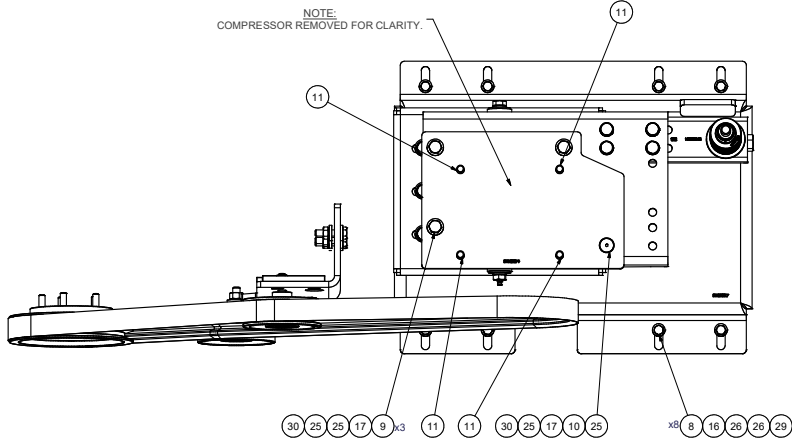
Product Number		Description	Rev#	Date	Weight	Uof M	Yield
Line	Component Prod#	Description	Bin	Unit	Qty		
<b>KBB00026</b>		<b>Bag Kit, Fasteners, Assembly, KBB00001/2</b>	<b>4</b>	<b>8/1/2012</b>	<b>2.48</b>		<b>0</b>
5	BTQ08101	Bolt, Hex, 1/2-20unf, 1.00", 8, Plt		each	6		
15	BTQ08100	Bolt, Hex, 1/2-13unc, 1.00", 8, Plt		each	1		
20	BTQ08150	Bolt, Hex, 1/2-13unc, 1.5", 8, Plt		each	8		
70	WFS08001	Washer, Flat, 1/2", 8, USS, Plt		each	2		
100	WFQ08000	Washer, Flat, 1/2", 8, Plt		each	6		
120	WLQ08000	Washer, Lock, 1/2", 8, Plt		each	16		
130	NTQ08000	Nut, Hex, 1/2-13unc, 8, Plt		each	4		
140	BTM08100	Bolt, 1/2-13 x 1.0" w/ Grease Nipple FTG		each	1		

# Bill of Materials Listing

TransArctic Canada Inc.

6/2/2020  
Page 1 of 1

Product Number	Description	Rev#	Date	Weight	Uof M	Yield
Line	Component Prod#	Description	Bin	Unit	Qty	
<b>KPC89022</b>		<b>Kit, Pulley, ISL, 8.9L, 2B/X,'13</b>	<b>0</b>	<b>10/15/2013</b>	<b>11.51</b>	<b>0</b>
10	PUL89022	Pulley, Crank, ISL, 8.9L, 2B/X, 8", '13		each	1	
20	BTC10050	Bolt, Hex, 10 x 1.5 x 50mm, 10.9, Plt		each	5	
30	WFA10000	Washer, Flat, 10mm, 8.8, Plt		each	5	



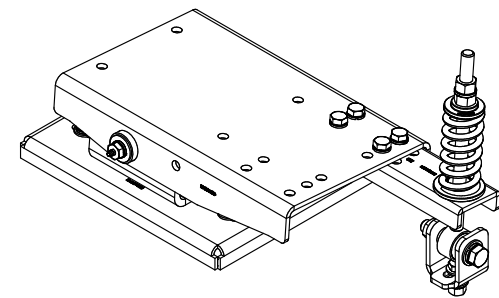
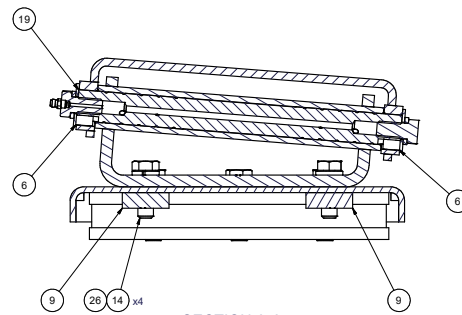
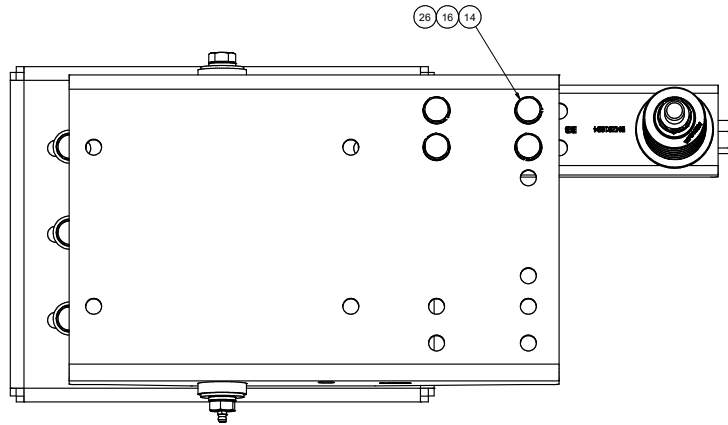
- NOTES:
- 1) USE SERVICABLE THREADLOCKER ON ALL FASTENERS TO ENGINE COMPONENTS AND TORQUE ALL BOLTS TO S.A.E. SPECIFICATIONS.
  - 2) SEE "TRANSARTIC A/C COMPRESSOR MOUNT INSTALLATION DISCLAIMER".

ITEM	QTY	U/M	PART NUMBER	DESCRIPTION
30	4	EACH	WLQ08000	WASHER, LOCK, 1/2", 8, PLT
29	8	EACH	WLQ06000	WASHER, LOCK, 3/8", 8, PLT
28	2	EACH	WLA12000	WASHER, LOCK, 12mm, 8.8, PLT
27	3	EACH	WLA10000	WASHER, LOCK, 10mm, 8.8, PLT
26	16	EACH	WFS06002	WASHER, FLAT, 3/8", L9, PLT
25	7	EACH	WFO08000	WASHER, FLAT, 1/2", 8, PLT
24	2	EACH	WFA12002	WASHER, FLAT, 12mm, HVY, 8.8, PLT
23	6	EACH	WFA10002	WASHER, FLAT, 10mm, HVY, 8.8, PLT
22	2	EACH	SLV17012	SLEEVE, PULLEY, 16.90 x 22.23 mm x12.19l
21	1	EACH	SCD21912	SPACER, COL, DRL, 21.9mm x 31.80 x12.3l
20	1	EACH	SCD16012	SPACER, COL, DRL, 16 mm x 31.80 x 12.0l
19	1	EACH	PUA05012	PULLEY, ASSY, IDLER, B/BX gr, 5" STL, PLT
18	1	EACH	PUA05001	PULLEY, ASSY, IDLER, B/S, 5", STL, PLT
17	4	EACH	NTQ08000	NUT, HEX, 1/2-13UNC, 8, PLT
16	8	EACH	NTQ06000	NUT, HEX, 3/8-16UNC, 8, PLT
15	2	EACH	NTA12000	NUT, HEX, 12 x 1.75, 8.8, PLT
14	3	EACH	NTA10000	NUT, HEX, 10 x 1.5, 8.8, PLT
13	1	EACH	KPC89022	KIT, PULLEY, ISL, 8.5L, 2B/X, '13
12	1	EACH	KBB00002	MT KIT, PS, PLATFORM, TRANSIT, ADM, '20
11	4	EACH	CSF12036	CAPSCREW, FH, 12 x 1.75 x 35mm, 10.9, PLT
10	1	EACH	CSF08150	CAPSCREW, FH, 1/2-13 x 1.5", ALLOY, PLT
9	3	EACH	BTQ06200	BOLT, HEX, 1/2-13UNC x 2.00, 8, PLT
8	8	EACH	BTQ06175	BOLT, HEX, 3/8-16UNC, 1.75", 8, PLT
7	2	EACH	BTC12080	BOLT, HEX, 12 x 1.75 x 80mm, 10.9, PLT, FT
6	3	EACH	BTC10045	BOLT, HEX, 10 x 1.5 x 45mm, 10.9, PLT
5	1	EACH	BMZ01059	BKT, SLIDE, BLOCK, TH, HDX, '13
4	1	EACH	BMZ00074	BKT, PL, TM-55/65, HDX, INTERFACE, '50"
3	1	EACH	BMC90022	BKT, MAIN, IDLER, WELDMT, ISL, HDX, '16
2	1	EACH	BMC90017	BKT, FOUNDN, HDX, 4KFC, '16
1	1	EACH	BEL32286	BELT, BANDED B GR, 2286mm (90")

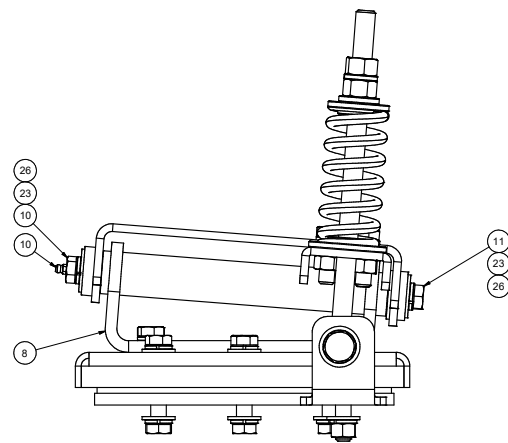
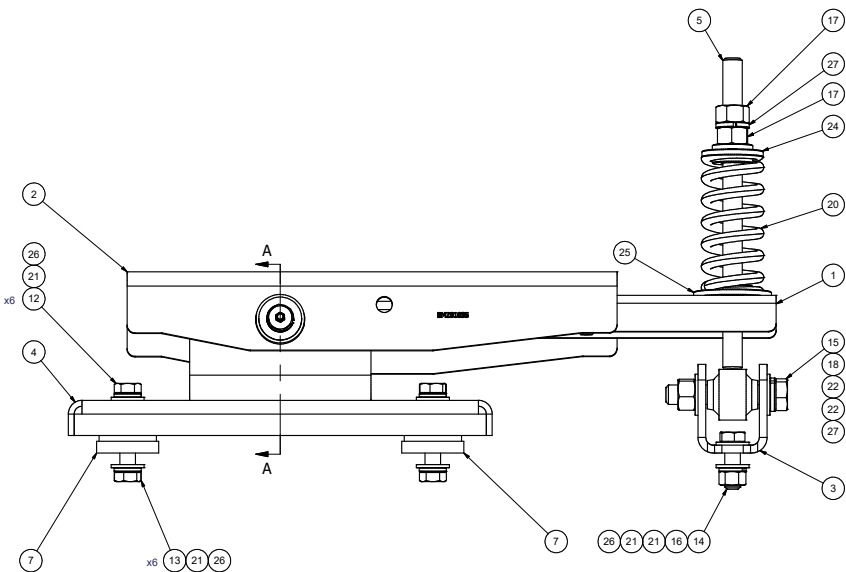
BILL OF MATERIALS						
DRAWN	rodriquez	11/8/2017	CHECKED			
1	WAS FERR0001	8/5/2009	JRR			
0	RELEASED TO PRODUCTION	11/29/2016	JRR			
REV	ECN	DESCRIPTION	DATE	BY	DATE	BY
				James Stewart	11/29/2016	
THIS DRAWING CONTAINS PROPRIETARY CONFIDENTIAL INFORMATION OWNED BY TRANSARTIC CANADA INC. THE DOCUMENT AND THE INFORMATION IN IT ARE NOT TO BE USED, DISCLOSED OR REPRODUCED WITHOUT EXPRESS WRITTEN PERMISSION OF THE COMPANY.						
APPROVED						
James Stewart 11/29/2016						
Dale Mason 11/29/2016						
UNSPECIFIED TOLERANCES:				ALL DIMS	FINISH	REV
ONE DECIMAL PLACE (X1)	MM	THIRD ANGLE PROJECTION				
TWO DECIMAL PLACE (X2)	MM					
THREE DECIMAL PLACE (X3)	MM					
FRACTIONAL (X1/8)"	INCHES					
DRAWING UNIT OF MEASURE:				MM (INCH)	SCALE	1:4
DWG NO				KMC96597		REV 2
SHEET				1		OF 1

NOTE:  
TORQUE TO: 49 FT-LB PLAIN & LUBRICATED W/ CLEAN ENGINE OIL (15W-40)  
(HEXBOLT CAPSCREW M10 x 1.5 x 50mm)  
TIGHTEN IN TWO STEPS IN A CRIS-CROSS TIGHTENING SEQUENCE PATTERN.

8 7 6 5 4 3 2 1



ISOMETRIC VIEW  
SCALE 1/3



27	2	EACH	WLO10000	WASHER, LOCK, 5/8", 8, PLT
26	23	EACH	WLO08000	WASHER, LOCK, 1/2", 8, PLT
25	1	EACH	WFS27001	WASHER, FLAT, DBL STEP, 28mm, 63.5, PLT
24	1	EACH	WFS16001	WASHER, FLAT, DBL STEP, 16mm, 50mm, PLT
23	2	EACH	WFS08001	WASHER, FLAT, 1/2", 8, USS, PLT
22	2	EACH	WFO10000	WASHER, FLAT, 5/8", 8, PLT
21	14	EACH	WFO08000	WASHER, FLAT, 1/2", 8, PLT
20	1	EACH	SPR00002	SPRING, COMP, R/H, 110 x 50 x 8.4, RED
19	1	EACH	PTSO1010	SHAFT, STL, GREASE, ADM TRANSIT, '12
18	1	EACH	NTQ10001	NUT, HEX, 5/8-18UNC, 8, PLT
17	2	EACH	NTQ10000	NUT, HEX, 5/8-11UNC, 8, PLT
16	5	EACH	NTQ08000	NUT, HEX, 1/2-13UNC, 8, PLT
15	1	EACH	BTQ10351	BOLT, HEX, 5/8-18UNC x 3.50, 8, PLT
14	9	EACH	BTQ08150	BOLT, HEX, 1/2-20UNC x 1.25, 8, PLT
13	6	EACH	BTQ08126	BOLT, HEX, 1/2-20UNC x 1.00, 8, PLT
12	6	EACH	BTQ08101	BOLT, HEX, 1/2-20UNC x 1.00, 8, PLT
11	1	EACH	BTQ08100	BOLT, HEX, 1/2-13UNC x 1.00, 8, PLT
10	1	EACH	BTM08100	BOLT, 1/2-13 x 1.0" w/ GREASE NIPPLE FTG
9	2	EACH	BMZ01047	BKT, BAR, SLIDE NUT, ADJ, TRANS ADM, '12
8	1	EACH	BMZ01044	BKT, ASSY, CRADLE PIVOT, ADM TRANSIT, '12
7	2	EACH	BMZ01042	VIBRATION ISOLATOR, BAR, 9.63 x 2 x 1.50
6	2	EACH	BMZ01041	Shaft Key, 5/16" SQ x .540" Long
5	1	EACH	BMZ01040	BKT, ASSY, THRD ROD, ISOLATOR, ADM, '12
4	1	EACH	BMZ01038	BKT, MAIN, BASE PL, ADM, '12
3	1	EACH	BMZ01037	BKT, FORK, KNUCKLE-JOINT, ADM, '12
2	1	EACH	BMZ01035	BKT, MAIN, PIVOT, ASSY, ADM TRANSIT, '12
1	1	EACH	BMZ01034	BKT, SPRING, SUPPORT ARM, ADM, '12
ITEM	QTY	U/M	PART NUMBER	DESCRIPTION

NOTES:  
1) USE SERVICABLE THREADLOCKER ON ALL FASTENERS TO ENGINE COMPONENTS AND TORQUE ALL BOLTS TO S.A.E. SPECIFICATIONS.  
2) SEE "TRANSARTIC A/C COMPRESSOR MOUNT INSTALLATION DISCLAIMER".

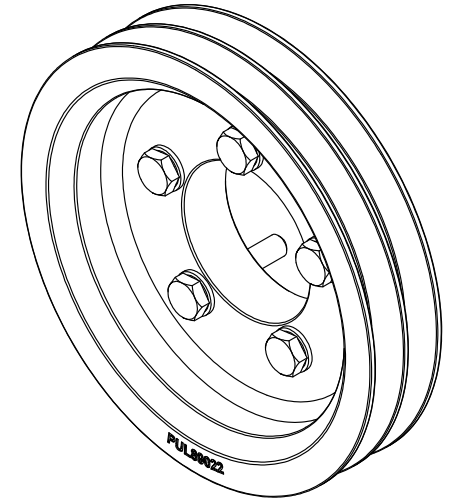
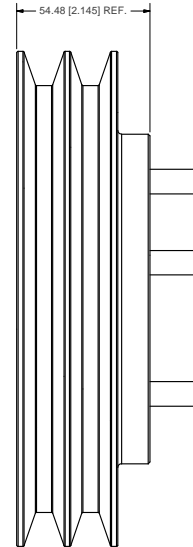
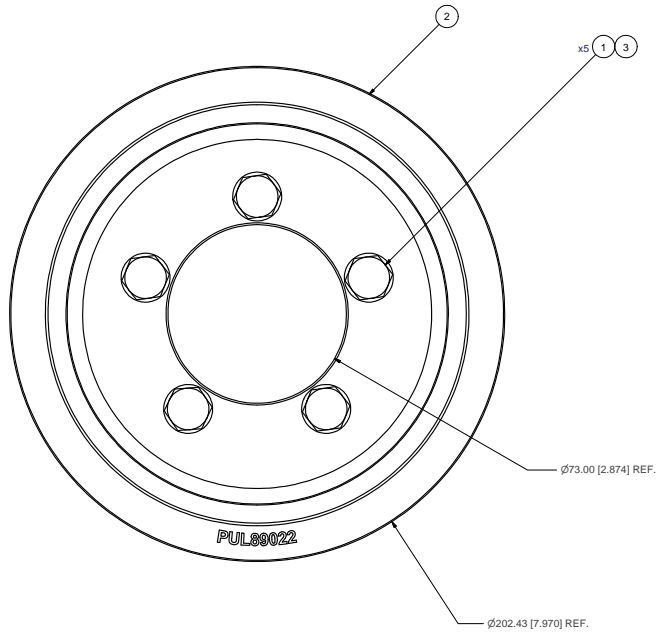
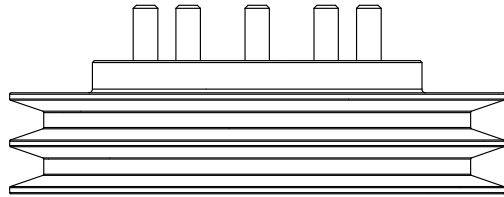
REV	ECN	DESCRIPTION	DATE	BY	APPROVED
0		RELEASED TO PRODUCTION	6/12/2020	JRR	
				James Stewart	6/12/2020
				Ron Ingram	6/12/2020
				Dale Mason	6/12/2020

DRAWN: jrodriguez 6/12/2020  
 CHECKED: Val Jakowlew 6/12/2020  
 TITLE: MT KIT, PS, PLATFORM, TRANSIT, ADM, '20  
 DWG NO: KBB00002  
 SCALE: 1:2  
 SHEET 1 OF 1



8 7 6 5 4 3 2 1





ISOMETRIC VIEW

- NOTES:**
- 1) USE SERVICABLE THREADLOCKER ON ALL FASTENERS TO ENGINE COMPONENTS AND TORQUE ALL BOLTS TO S.A.E. SPECIFICATIONS.
  - 2) SEE "TRANSARCTIC A/C COMPRESSOR MOUNT INSTALLATION DISCLAIMER".
  - 3) WT:≈ 11.56 LBS

ITEM	QTY	U/M	PART NUMBER	DESCRIPTION
3	5	EACH	WFA10000	WASHER, FLAT, 10mm, 8.8, PLT
2	1	EACH	PUL89022	PULLEY, CRANK, ISL, 8.9L, 2B/X, 8", '13
1	5	EACH	BTCT0050	BOLT, HEX, 10 x 1.5 x 50mm, 10.9, PLT

**TRANSARCTIC INC.**

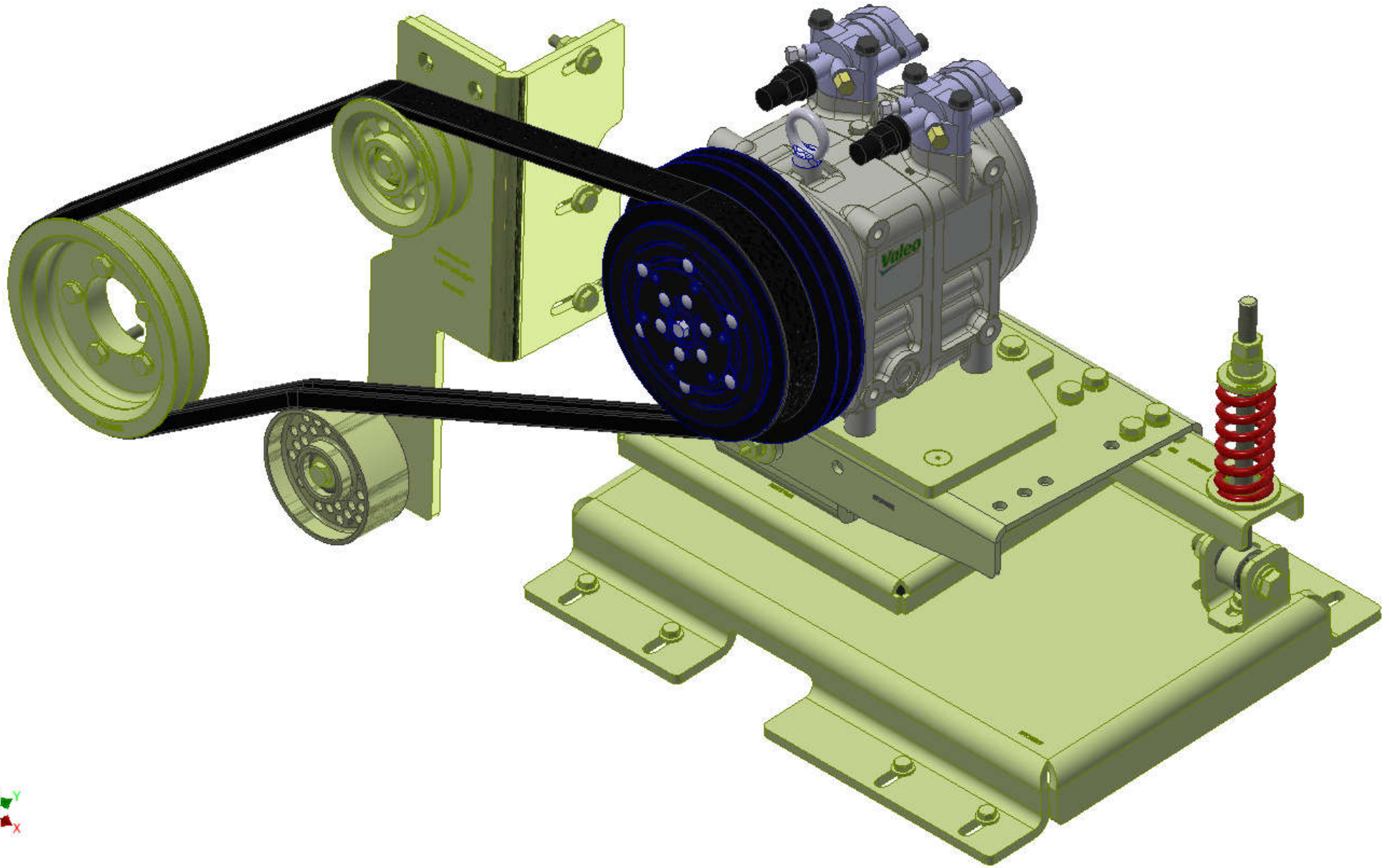
UNSPECIFIED TOLERANCES:	ALL DIM.
ONE DECIMAL PLACE (X.0)	±0.10 (±.004)
TWO DECIMAL PLACE (X.00)	±0.02 (±.0008)
THREE DECIMAL PLACE (X.000)	±0.002 (±.00008)
FRACTIONAL (1/16")	±.005 (±.0002)

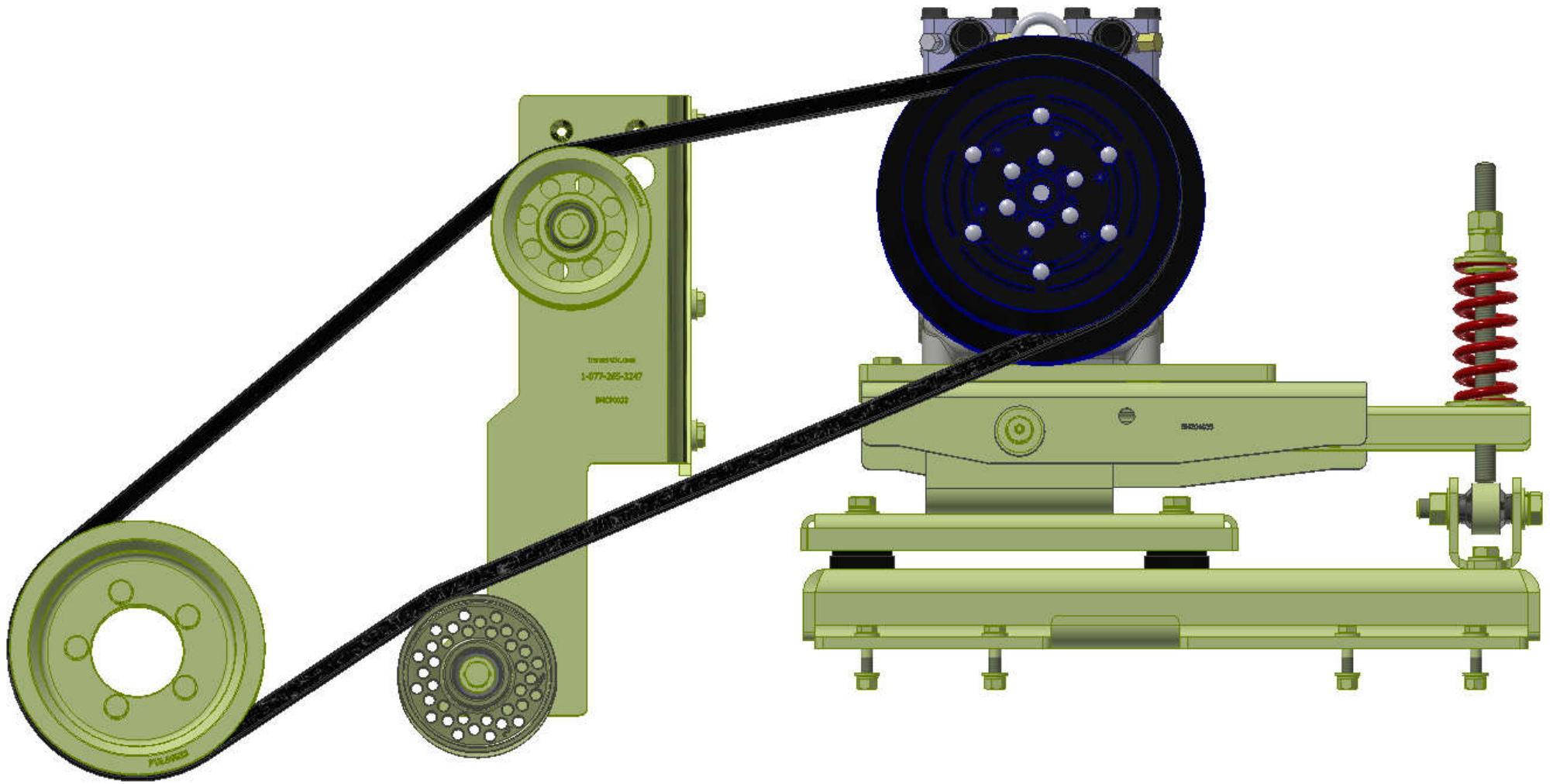
DRAWN	DATE	TITLE
J Rodriguez	10/15/2013	
Checked		
val Jakowlew	10/15/2013	
GA		
James Stewart	10/15/2013	
MFG		
Ron Ingram	10/15/2013	
APPROVED		
Dale Mason	10/15/2013	

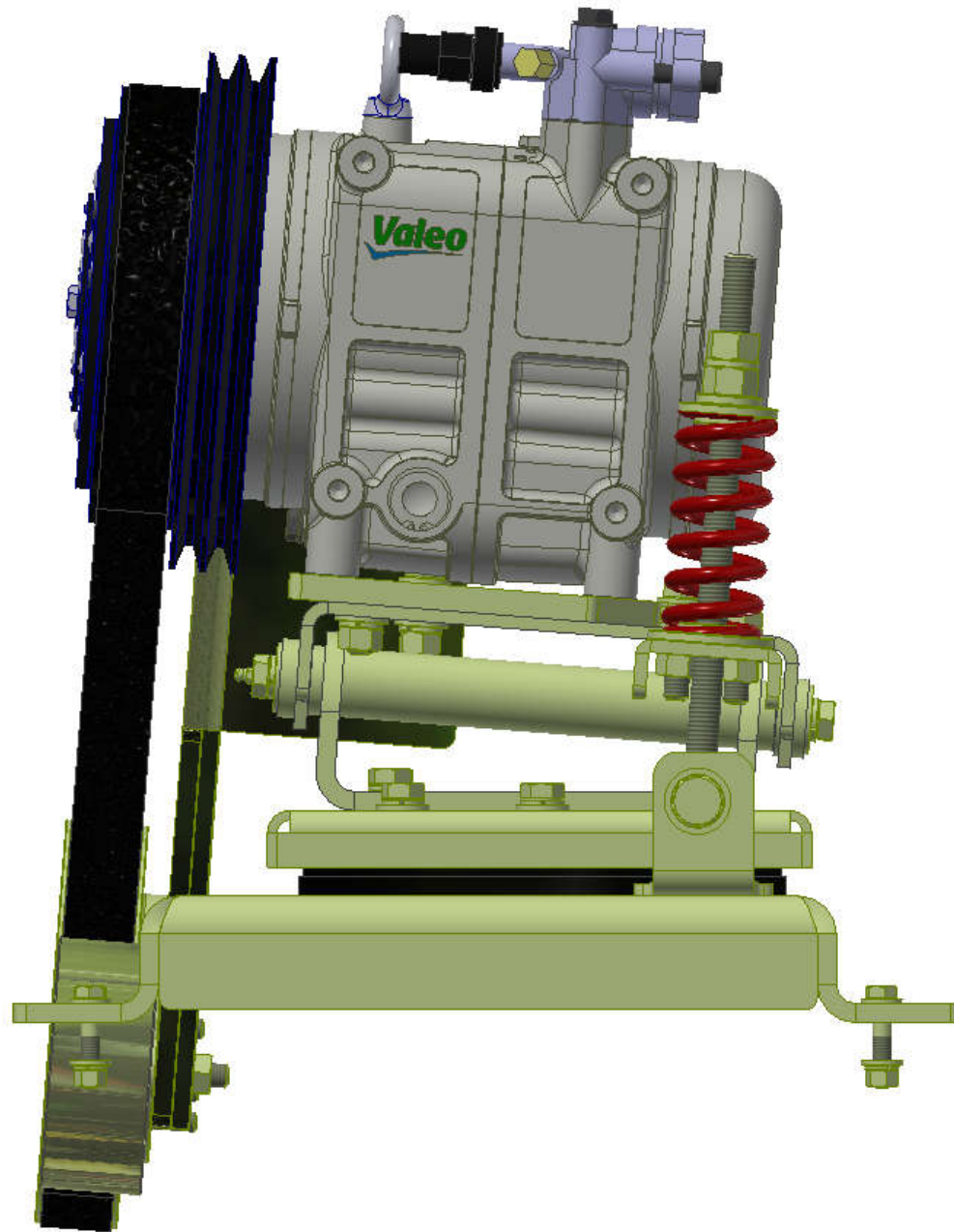
REV	DESCRIPTION	DATE	BY
0	RELEASED TO PRODUCTION	10/15/2013	JRB

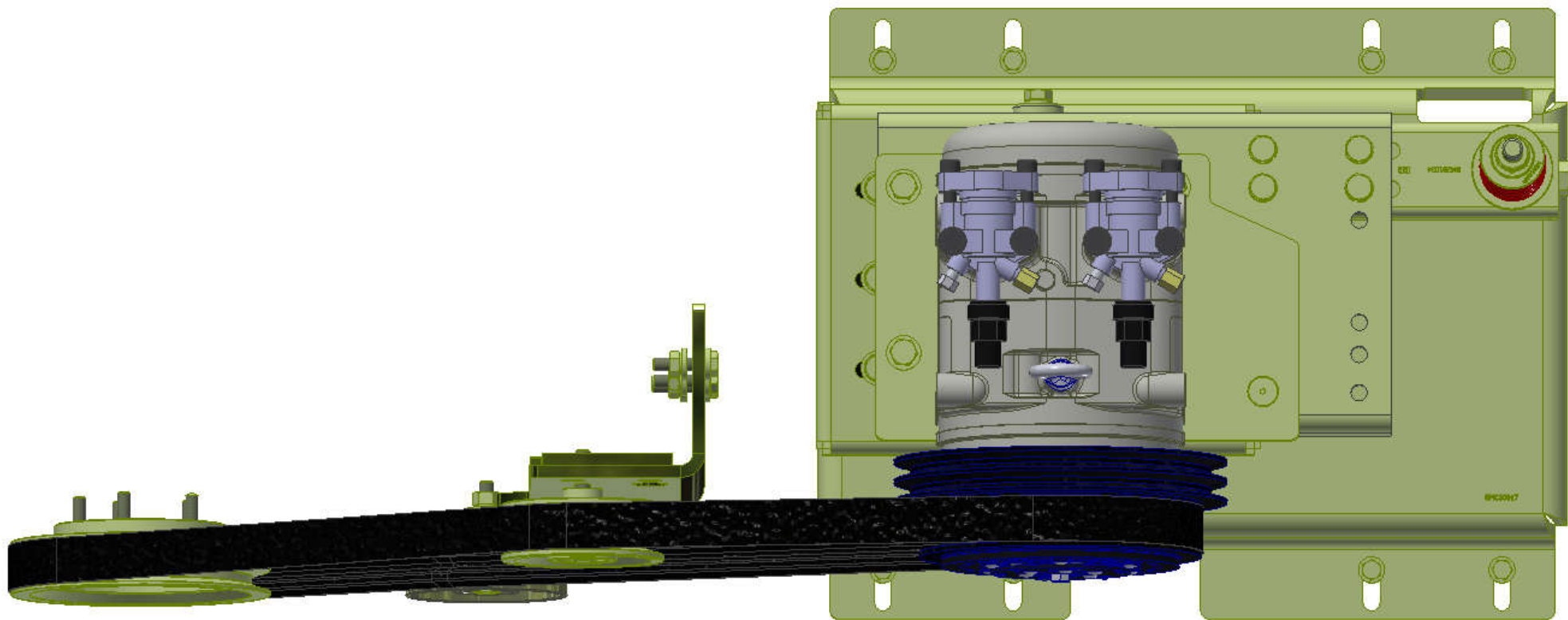
THIS DRAWING CONTAINS PROPRIETARY CONFIDENTIAL INFORMATION OWNED BY TRANSARCTIC CANADA INC. THE DOCUMENT AND THE INFORMATION IN IT ARE NOT TO BE USED, DISCLOSED OR REPRODUCED WITHOUT EXPRESS WRITTEN PERMISSION OF THE COMPANY.

SIZE	DWG NO	REV
D	KPC89022	0

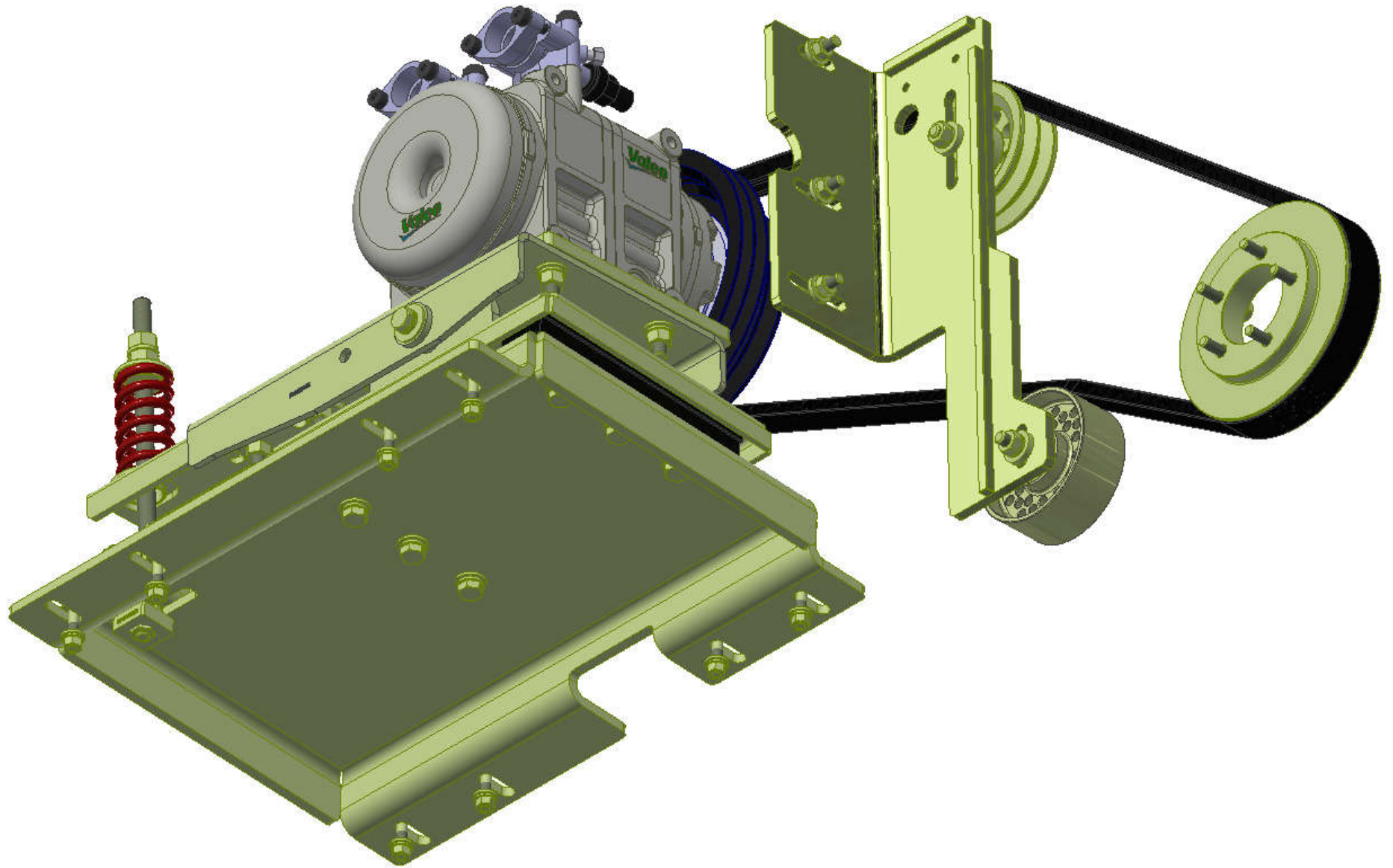












## **TransArctic A/C Compressor Mount Installation Disclaimer**

All compressor mounts should be installed by qualified and trained personnel using proper tools and equipment in safe working conditions following industry standard guidelines for motor vehicle service and repair.

The installer of any compressor mount purchased from TransArctic must undertake all responsibility of issues arising from that compressor bracket being installed on any vehicle. As well as insure that a **proper and sufficient ground** is established between the compressors' clutches and the vehicle's engine. Mount functionality, operation and durability can all be compromised by an incompetent installation.

Due to the many different situations, parameters and application criteria, which are beyond the compressor mount manufacturer's control, TransArctic does not warrant design, durability, or operational functionality of any compressor mount improperly installed by another party.

**With no implied guarantees it is the mount installer's strict responsibility to determine safety and functionality, of the compressor mount, at the time of installation.**

Please contact TransArctic with any issue arising from installation so we may better improve the product. If you have any reservations about the compressor mount integrity contact TransArctic immediately at 1-877-COLD-AIR.

**Mark OEM tensioner location**

**Install Kit**

**Check for Interferences**

**Check to ensure that the proper OEM tensioner orientation is maintained**

**Run engine with A/C system engaged for at least 10 minutes to run in belt**

**Check OEM tensioner orientation and adjust as required**

### **Responsabilidad limitada de TransArctic en la instalación del soporte del compresor**

Todos los soportes de los compresores deben ser instalados por personas calificadas y entrenadas, usando para ello los equipos y herramientas necesarios para esta labor en buenas condiciones y según las normas y guías para el servicio y/o reparación de motores de vehículos.

El instalador de los soportes comprados en TransArctic asume toda la responsabilidad de cualquier problema que surga en el soporte del compresor al vehículo; de igual manera es responsable que el cable a tierra sea conectado entre el embrague del compresor y el motor del vehículo.

Se advierte que el buen funcionamiento y la durabilidad del soporte pueden ser comprometidos por defectos en su instalación.

Debido a las diversas situaciones que se puedan presentar fuera del control del fabricante, TransArctic no garantiza el diseño, la durabilidad o el correcto funcionamiento de cualquier equipo inapropiadamente instalado por terceros.

**Esta sobreentendido que el Instalador del montaje del compresor es estrictamente responsable de la seguridad y funcionamiento del equipo en el momento de la instalación.**

Si tuviera algún problema o duda acerca de la instalación del soporte del compresor pongase en contacto inmediatamente con TransArctic al teléfono 1-877-COLD-AIR de modo que podamos mejorar nuestro producto.

**Note la ubicación del medidor de tensión OEM**

**Instale el equipo**

**Controlar si hay interferencias.**

**Asegurese que el medidor de tensión mantenga la orientación justa.**

**Encienda el motor por lo menos 10 minutos con el sistema A/C enganchado para que la correa corra**

**Controle la orientación justa del medidor de tensión y ajuste a las condiciones requeridas del fabricante**