

# Bill of Materials Listing

TransArctic Canada Inc.

10/2/2013  
Page 1 of 1

Product Number		Description	Bin	Date	Weight	Uof M	Yield
Line	Component Prod#	Description		Unit	Qty		
<b>KMC64163</b>		<b>Mt Kit, ISB13, T3RE, O5G, 8" Cr, '13</b>		<b>02/13/13</b>	<b>217.10</b>		<b>0</b>
10	BEL22388	Belt, B gr, 2388mm (94") (BX91)		each	2		
20	BMC67093	Bkt, Fuse Panel, Vert., ISB, T3RE		each	1		
30	BMC67094	Bkt, Diag, Brace DS, Fuse Panel, T3RE		each	1		
40	BMC67095	Bkt, Diag, Brace PS, Fuse Panel, T3RE		each	1		
50	BMC67096	Bkt, Diag Brace, DS, Frame Rail, T3RE		each	1		
60	BMC83047	Bkt, Brace, Vert, RR, Bumper, ISC, D3		each	1		
70	BMC83052	Bkt, Main, RR Plate, MFDT, RE300		each	1		
80	BMC83054	Bkt, Main, Idler, Weldm't, RE300		each	1		
90	BMC83057	Bkt, Main, Frt Pl, MFDT, RE300		each	1		
100	BMC83059	Bkt, Diag, Brace Frt, MF DT, RE300		each	1		
110	BMN80008	Vibration Isolator, Bar, 16.50 x 2 x 1.50		each	2		
120	BMN80009	Bkt, Main, Base Pl, IC, RE300		each	1		
130	BMN80010	Bkt, Main, Slide, Assy, O5G, IC, RE300		each	1		
140	BMN80024	Bkt, Comp, FRT, Z, IC, RE300		each	1		
150	BMN80025	Bkt, Back, PL, Slide, IC, RE300		each	1		
160	KAC64163	Kit, Alt. 24V, ISB, T3RE, '13		each	1		
165	KRC67001	Kit, Retrofit, ISB, Air Filter Reloc,'13		each	1		
170	PUA05012	Pulley, Assy, Idler,B/BX gr,5", STL,Plt		each	1		
180	PUL67323	Pulley, Crank, ADD-ON, 8.75", ISB, 2B/3V		each	1		
190	PUL80074	Pulley, Idler, B/S, Wide, 76d (89102)		each	1		
200	SCD29213	Spacer, Col, Drl, 29.21mm x 25.4o x 12.7i		each	2		
210	SCD37012	Spacer, Col, Drl, 37 mm x 25.4o x 12.3i		each	1		
220	SCD41012	Spacer, Col, Drl, 41 mm x 25.4o x 12.3i		each	1		
230	SLV17012	Sleeve, Pulley, 16.9o x 22.23mm x 12.32i		each	2		
240	KBC64163	Bag Kit, Fasteners, KMC64163		each	1		

# Bill of Materials Listing

TransArctic Canada Inc.

10/2/2013  
Page 1 of 1

Product Number		Description	Bin	Date	Weight	Uof M	Yield
Line	Component Prod#	Description		Unit	Qty		
<b>KBC64163</b>		<b>Bag Kit, Fasteners, KMC64163</b>		<b>02/15/13</b>	<b>4.39</b>		<b>0</b>
10	BTC10025	Bolt, Hex, 10 x 1.5 x 25mm, 10.9, Plt		each	2		
20	BTC10040	Bolt, Hex, 10 x 1.5 x 40mm, 10.9, Plt,FT		each	5		
30	BTC12035	Bolt, Hex, 12 x 1.75 x 35mm, 10.9,Plt,FT		each	1		
40	BTC12040	Bolt, Hex, 12 x 1.75 x 40mm, 10.9,Plt,FT		each	4		
50	BTC12050	Bolt, Hex, 12 x 1.75 x 50mm, 10.9,Plt		each	2		
60	BTC12100	Bolt, Hex, 12 x 1.75 x 100mm, 10.9, Plt		each	2		
70	BTQ06150	Bolt, Hex, 3/8-16unc, 1.50", 8, Plt		each	2		
80	BTQ08126	Bolt, Hex, 1/2-20unf, 1.25", 8, Plt		each	10		
90	BTQ08151	Bolt, Hex, 1/2-20unf, 1.5", 8, Plt		each	2		
110	NTA10000	Nut, Hex, 10 x 1.5, 8.8, Plt		each	2		
120	NTA12000	Nut, Hex, 12 x 1.75, 8.8, Plt		each	9		
130	NTP07000	Nut, Hex, 7/16-14unc, 5, Plt		each	4		
140	WFA10000	Washer, Flat, 10mm, 8.8, Plt		each	9		
150	WFA12000	Washer, Flat, 12mm, 8.8, Plt		each	16		
160	WFN06000	Washer, Flat, 3/8", 2, Plt		each	2		
170	WFN07000	Washer, Flat, 7/16", 2, Plt		each	4		
180	Wfq08000	Washer, Flat, 1/2", 8, Plt		each	12		
190	WLA10000	Washer, Lock, 10mm, 8.8, Plt		each	7		
200	WLA12000	Washer, Lock, 12mm, 8.8, Plt		each	9		
210	WLQ06000	Washer, Lock, 3/8", 8, Plt		each	2		
220	WLQ07000	Washer, Lock, 7/16", 8, Plt		each	4		
230	WLQ08000	Washer, Lock, 1/2", 8, Plt		each	13		

# Bill of Materials Listing

TransArctic Canada Inc.

10/2/2013

Page 1 of 1

Product Number		Description	Bin	Date	Weight	Uof M	Yield
Line	Component	Prod#	Description	Unit	Qty		
<b>KAC64163</b>			<b>Kit, Alt. 24V, ISB, T3RE, '13</b>		<b>02/15/13</b>	<b>36.89</b>	<b>0</b>
5	BEL81080		Belt, 8gr, 1080mm (42.5") (5080425)	each	1		
10	BMC67097		Bkt, Main, Alt, Weldmt, ISB, T3RE,'13	each	1		
20	BMC67100		Bkt, Spacer, 6.7L, ISB, T3RE, '13	each	1		
30	BMC67101		BKT, Tenr Arm, Alt, T3RE, '13	each	1		
40	BMC67102		Bkt, Spacer, Bar, ISB, T3RE, '13	each	1		
45	BMC67103		Bkt, Diag, Brace, Tenr, ISB, T3RE, '13	each	1		
50	PUL80064		Pulley,ALT,Frontside,P8,63.5d (3972808)	each	1		
60	PUL83008		Pulley, Fan, Add-on, Cum, ISC, 8.3, 8gr	each	1		
70	TEN80005		Tenr, HD Spring, BackSide, CCW (89430)	each	1		
80	KBA64163		Bag Kit, Fasteners, KAC64163	each	1		

# Bill of Materials Listing

TransArctic Canada Inc.

10/2/2013  
Page 1 of 1

Product Number	Description	Date	Weight	Uof M	Yield
Line    Component    Prod#    Description	Bin	Unit	Qty		
<b>KBA64163</b>	<b>Bag Kit, Fasteners, KAC64163</b>	<b>02/26/13</b>	<b>1.90</b>		<b>0</b>
10 BTC08015	Bolt, Hex, 8 x 1.25 x 15mm, 10.9, Plt	each	1		
20 BTC08035	Bolt, Hex, 8 x 1.25 x 35mm, 10.9, Plt,FT	each	1		
30 BTC10030	Bolt, Hex, 10 x 1.5 x 30mm, 10.9, Plt	each	1		
40 BTC10060	Bolt, Hex, 10 x 1.5 x 60mm, 10.9, Plt	each	1		
50 BTC10070	Bolt, Hex, 10 x 1.5 x 70mm, 10.9, Plt	each	2		
60 BTC10080	Bolt, Hex, 10 x 1.5 x 80mm, 10.9, Plt,FT	each	1		
70 BTQ08150	Bolt, Hex, 1/2-13unc, 1.5", 8, Plt	each	4		
80 BTQ08653	Bolt, Hex, 1/2-13unc, 6.5", 8, Plt	each	1		
90 CSF08031	Capscrew, FH, 8 x 1.25 x 30mm, 10.9,Plt	each	1		
110 NTQ08000	Nut, Hex, 1/2-13unc, 8, Plt	each	3		
120 WFA08000	Washer, Flat, 8mm, 8.8, Plt	each	2		
130 WFA10000	Washer, Flat, 10mm, 8.8, Plt	each	5		
140 WFQ08000	Washer, Flat, 1/2", 8, Plt	each	8		
150 WLA08000	Washer, Lock, 8mm, 8.8, Plt	each	2		
160 WLA10000	Washer, Lock, 10mm, 8.8, Plt	each	5		
180 WLQ08000	Washer, Lock, 1/2", 8, Plt	each	5		

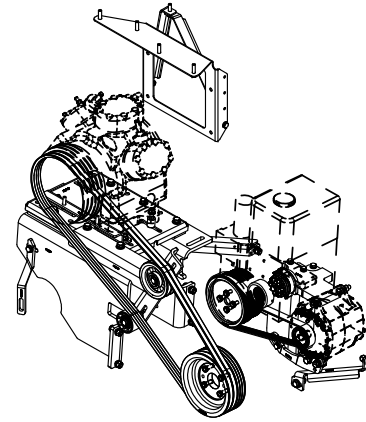
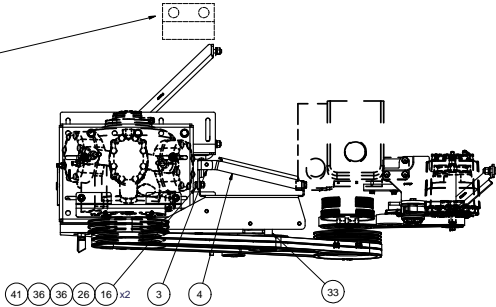
# Bill of Materials Listing

TransArctic Canada Inc.

10/2/2013  
Page 1 of 1

Product Number	Description		Date	Weight	Uof M	Yield
Line    Component    Prod#	Description	Bin	Unit	Qty		
<b>KRC67001</b>	<b>Kit, Retrofit, ISB, Air Filter Reloc,'13</b>		<b>05/15/13</b>	<b>0.00</b>		<b>0</b>
10 10031369	Brkt, Mtg, Air Clean		each	1		
20 01789262	Elbow, Rubber, 6.00		each	1		
30 01432798	Clamp, Spring, Load		each	2		
40 01856038	Clamp, Spring, Load		each	1		
50 10031278	Tube, Air, Intake		each	1		
60 00014917	Elbow, Rubber, Cobr		each	1		

REF: KRC67001 AIR INLET RELOCATION KIT



ISOMETRIC VIEW

NOTES:

- 1) USE SERVICABLE THREADLOCKER ON ALL FASTENERS TO ENGINE COMPONENTS AND TORQUE ALL BOLTS TO S.A.E. SPECIFICATIONS.
- 2) SEE "TRANSARCTIC A/C COMPRESSOR MOUNT INSTALLATION DISCLAIMER".

ITEM	QTY	U/M	PART NUMBER	DESCRIPTION
45	13	EACH	WLO08000	WASHER, LOCK, 1/2", 8, PLT
44	4	EACH	WLO07000	WASHER, LOCK, 7/16", 8, PLT
43	2	EACH	WLO06000	WASHER, LOCK, 3/8", 8, PLT
42	9	EACH	WLA12000	WASHER, LOCK, 12mm, 8.8, PLT
41	7	EACH	WLA10000	WASHER, LOCK, 10mm, 8.8, PLT
40	12	EACH	WFO08000	WASHER, FLAT, 1/2", 8, PLT
39	4	EACH	WFO07000	WASHER, FLAT, 7/16", 2, PLT
38	2	EACH	WFO06000	WASHER, FLAT, 3/8", 2, PLT
37	16	EACH	WFA12000	WASHER, FLAT, 12mm, 8, 8, PLT
36	9	EACH	WFA10000	WASHER, FLAT, 10mm, 8, 8, PLT
35	2	EACH	SLV17012	SLEEVE, PULLEY, 16.9x 22.23 mm x12.19
34	1	EACH	SCD41012	SPACER, COL, DRL, 41mm x 25.4x 12.3i
33	1	EACH	SCD37012	SPACER, COL, DRL, 37mm x 25.4x 12.3i
32	2	EACH	SCD29212	SPACER, COL, DRL, 29.21mm x 25.4x 12.7i
31	1	EACH	PUL80074	PULLEY, IDLER, BACKSIDE, P8, 74D, 46.27W
30	1	EACH	PUL67323	PULLEY, CRANK, ADD-ON, COMBO, ISB, 28/3V
29	1	EACH	PIA05012	PULLEY, ASSY, IDLER, B/BX gr, 5" STL, PLT
28	4	EACH	NTF07000	NUT, HEX, 7/16-16UNC, 5, PLT
27	9	EACH	NTA12000	NUT, HEX, 12 x 1.75, 8, 8, PLT
26	2	EACH	NTA10000	NUT, HEX, 10 x 1.5, 8, 8, PLT
25	1	EACH	KAC64163	ALT, KIT, 24V, ISB, T3RE, '13
24	2	EACH	BTQ08151	BOLT, HEX, 1/2-20UNF x 1.50, 8, PLT
23	10	EACH	BTQ08126	BOLT, HEX, 1/2-20UNF x 1.25, 8, PLT
22	2	EACH	BTQ06150	BOLT, HEX, 3/8-16UNC, 1.50", 8, PLT
21	2	EACH	BTCT12100	BOLT, HEX, 12 x 1.75 x 100mm, 10.9, PLT
20	2	EACH	BTCT12050	BOLT, HEX, 12 x 1.75 x 50mm, 10.9, PLT
19	4	EACH	BTCT12040	BOLT, HEX, 12 x 1.75 x 40mm, 10.9, PLT
18	1	EACH	BTCT12035	BOLT, HEX, 12 x 1.75 x 35mm, 10.9, PLT
17	5	EACH	BTCT10040	BOLT, HEX, 10 x 1.5 x 40mm, 10.9, PLT
16	2	EACH	BTCT10025	BOLT, HEX, 10 x 1.5 x 25mm, 10.9, PLT
15	1	EACH	BMN80025	BKT, BACK, PL, SLIDE, IC, RE300
14	1	EACH	BMN80024	BKT, COMP, FRT, Z, IC, RE300
13	1	EACH	BMN80010	BKT, MAIN, SLIDE, ASSY, IC, RE300
12	1	EACH	BMN80009	BKT, MAIN, BASE, PL, IC, RE300
11	2	EACH	BMN80008	VIBRATION ISOLATOR, BAR, 16.50 x 2 x 1.50
10	1	EACH	BMCS3059	BKT, DIAG, BRACE, FRT, MFD, RE300
9	1	EACH	BMCS3057	BKT, MAIN, FRT, PL, MFD, RE300
8	1	EACH	BMCS3054	BKT, MAIN, IDLER, WELDMT, RE300
7	1	EACH	BMCS3052	BKT, MAIN, RR, PL, MFD, RE300
6	1	EACH	BMCS3047	BKT, BRACE, VERT, RR, BUMPER, ISC, D3
5	1	EACH	BMCS67096	BKT, DIAG, BRACE, DS, FRAME RAIL, T3RE
4	1	EACH	BMCS67095	BKT, DIAG, BRACE, PS, FUSE PANEL, T3RE
3	1	EACH	BMCS67094	BKT, DIAG, BRACE, DS, FUSE PANEL, T3RE
2	1	EACH	BMCS67093	BKT, FUSE, PANEL, VERT, ISB, T3RE
1	2	EACH	BEL22388	BELT, B Gr, 2388 mm (94") (BX91)

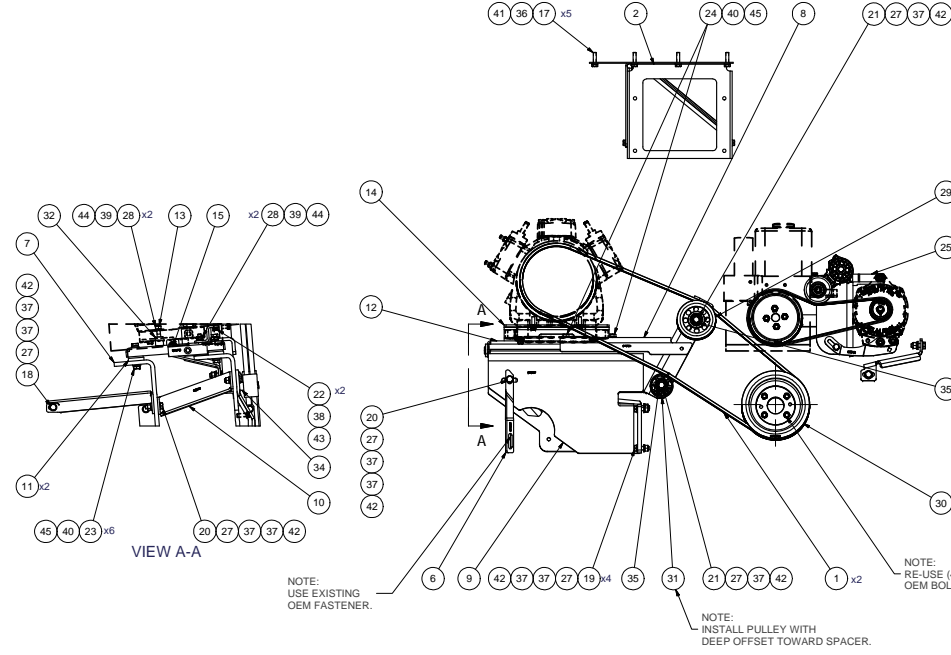
TRANSARCTIC INC.

MT KIT, ISB13, T3RE O5G, 8" Cr, '13

UNSPECIFIED TOLERANCES:	ALL DIMS
ONE DECIMAL PLACE (.X)	±.050
TWO DECIMAL PLACES (.XX)	±.010
THREE DECIMAL PLACES (.XXX)	±.005
FRACTIONAL (1/16")	±.005
ANGULAR	±.25°

BROWN	01/28/13
James Stewart	02/19/13
James Stewart	2/19/2013
Ron Ingram	02/19/13
Dale Mason	02/19/13

SIZE	D	DWG NO	KMC641163	REV	0
SCALE	1:8				
DRAWING UNIT OF MEASURE		MM (INCH)			
SHEET		1	OF 1		

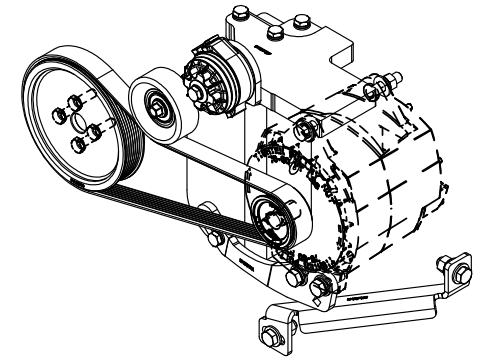
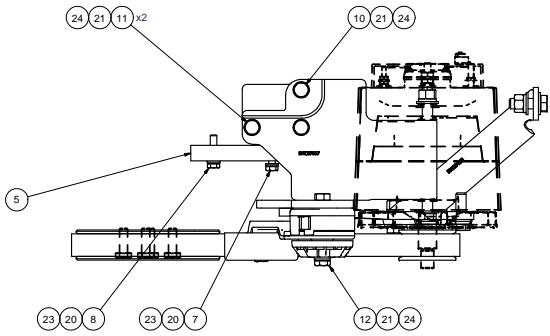


VIEW A-A

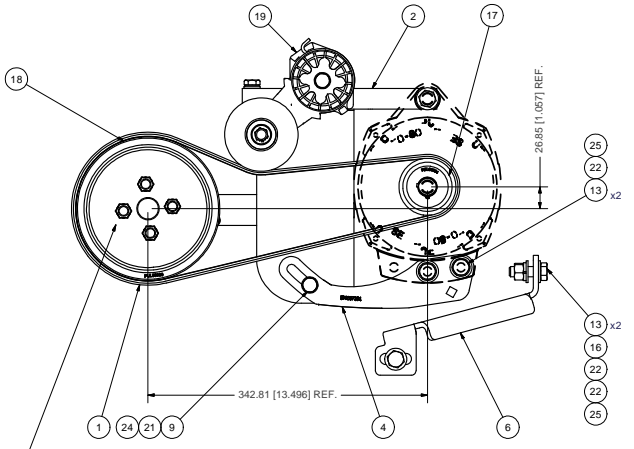
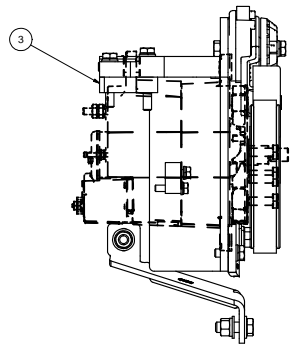
NOTE: USE EXISTING OEM FASTENER.

NOTE: RE-USE (4) EXISTING OEM BOLTS

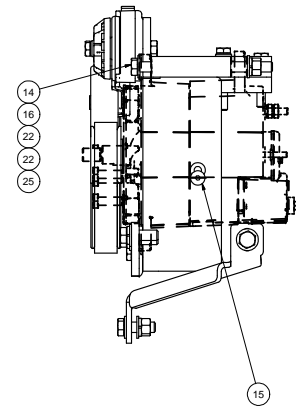
NOTE: INSTALL PULLEY WITH DEEP OFFSET TOWARD SPACER.



ISOMETRIC VIEW



NOTE:  
RE-USE (4) EXISTING  
OEM BOLTS



NOTES:

- 1) USE SERVICABLE THREADLOCKER ON ALL FASTENERS TO ENGINE COMPONENTS AND TORQUE **ALL** BOLTS TO S.A.E. SPECIFICATIONS.
- 2) SEE "TRANSARCTIC A/C COMPRESSOR MOUNT INSTALLATION DISCLAIMER".
- 3) WEIGHT: 35.06 LB

ITEM	QTY	U/M	PART NUMBER	DESCRIPTION
25	5	EACH	WLO08000	WASHER, LOCK, 1/2", 8, PLT
24	5	EACH	WLA10000	WASHER, LOCK, 10mm, 8.8, PLT
23	2	EACH	WLA08000	WASHER, LOCK, 8mm, 8.8, PLT
22	8	EACH	WFO08000	WASHER, FLAT, 1/2", 8, PLT
21	5	EACH	WFA10000	WASHER, FLAT, 10mm, 8.8, PLT
20	2	EACH	WFA08000	WASHER, FLAT, 8mm, 8.8, PLT
19	1	EACH	TEN80005	TENR, HD SPRING, BACKSIDE, CCW (89430)
18	1	EACH	PUL83008	PULLEY, FAN, ADD-ON, CLM, ISC, 8.3, 8gr
17	1	EACH	PUL80064	PULLEY, ALT, FRONTSIDE, P8, 63.5d (3972808)
16	3	EACH	NTO08000	NUT, HEX, 1/2-13UNC, 8, PLT
15	1	EACH	CSF08031	CAPSCREW, FH, 8 x 1.25 x 30mm, 10.9, PLT
14	1	EACH	BTQ08653	BOLT, HEX, 1/2-13UNC x 6.50, 8, PLT, FT
13	4	EACH	BTQ08150	BOLT, HEX, 1/2-13UNC x 1.50, 8, PLT
12	1	EACH	BTC10080	BOLT, HEX, 10 x 1.5 x 80mm, 10.9, PLT, FT
11	2	EACH	BTC10070	BOLT, HEX, 10 x 1.5 x 70mm, 10.9, PLT
10	1	EACH	BTC10060	BOLT, HEX, 10 x 1.5 x 60mm, 10.9, PLT
9	1	EACH	BTC10030	BOLT, HEX, 10 x 1.5 x 30mm, 10.9, PLT
8	1	EACH	BTC08035	BOLT, HEX, 8 x 1.25 x 35mm, 10.9, PLT
7	1	EACH	BTC08015	BOLT, HEX, 8 x 1.25 x 15mm, 10.9, PLT
6	1	EACH	BMC67103	BKT, DIAG, BRACE, TENR, ISB, T3RE, '13
5	1	EACH	BMC67102	BKT, SPACER, BAR, ISB, T3RE, '13
4	1	EACH	BMC67101	BKT, TENR ARM, ALT, T3RE, '13
3	1	EACH	BMC67100	BKT, SPACER, 6.7L, ISB, T3RE, '13
2	1	EACH	BMC67097	BKT, MAIN, ALT, WELDMT, ISB, T3RE, '13
1	1	EACH	BEL1080	BELT, 6GR, 1080mm (42.5") (5080425)

BILL OF MATERIALS

DRAWN	ipimer	2/15/2013		
CHECKED	Vai Jakowlew	2/15/2013		
REV	ECN	DESCRIPTION	DATE	BY
1		UPDATED FASTENERS	2/15/2013	JIP
0		RELEASED FOR PRODUCTION	2/25/2013	JRR
1			2/15/2013	James Stewart
1			2/15/2013	Ron Ingram
1			2/15/2013	Dale Mason



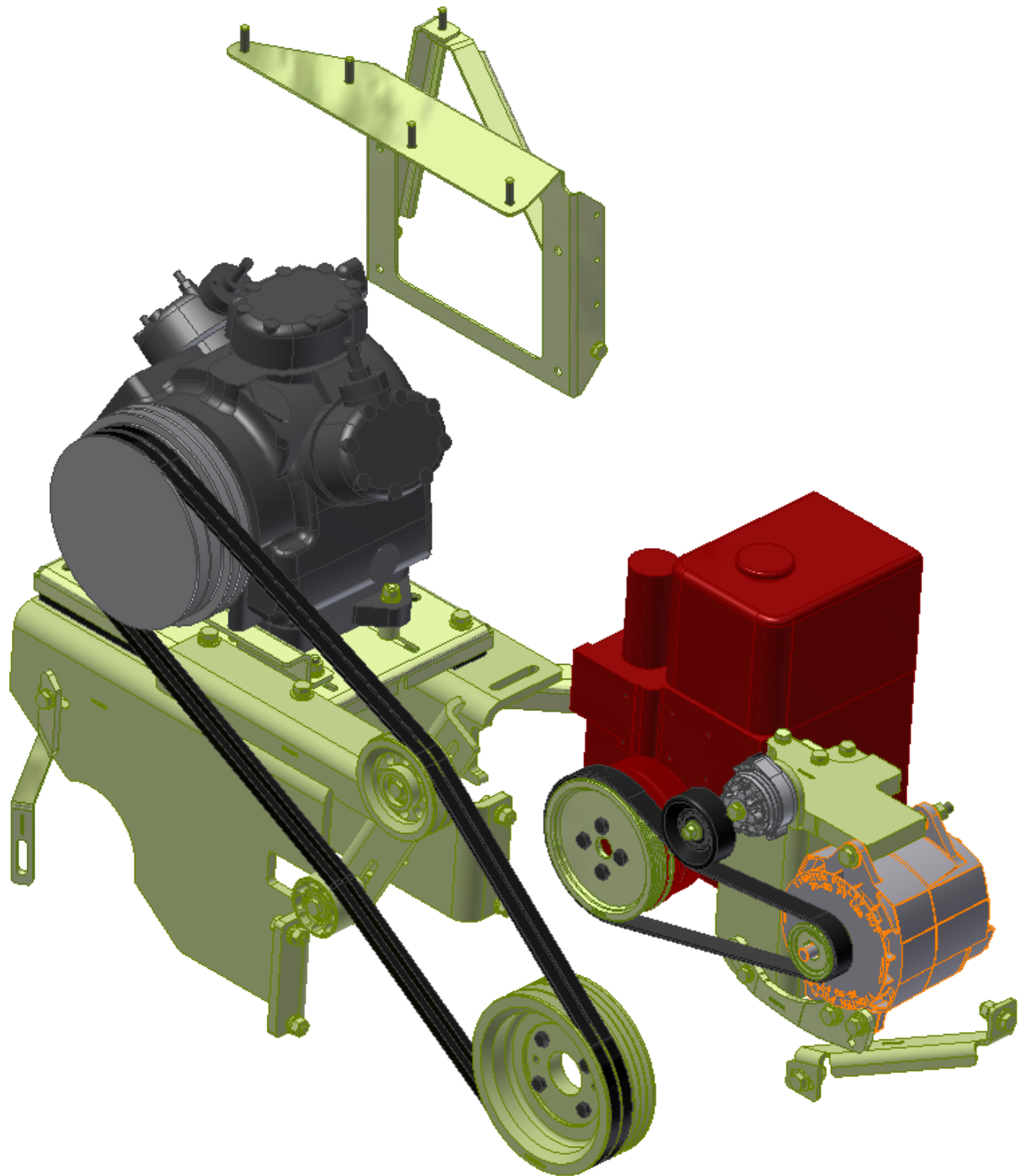
ALT. KIT, 24V, ISB, T3RE, '13

UNSPECIFIED TOLERANCES:	MM (INCH)
ONE DECIMAL PLACE (.X)	MM (0.005)
TWO DECIMAL PLACES (.XX)	MM (0.025)
THREE DECIMAL PLACES (.XXX)	MM (0.050)
FRACTIONAL (1/16")	MM (0.125)

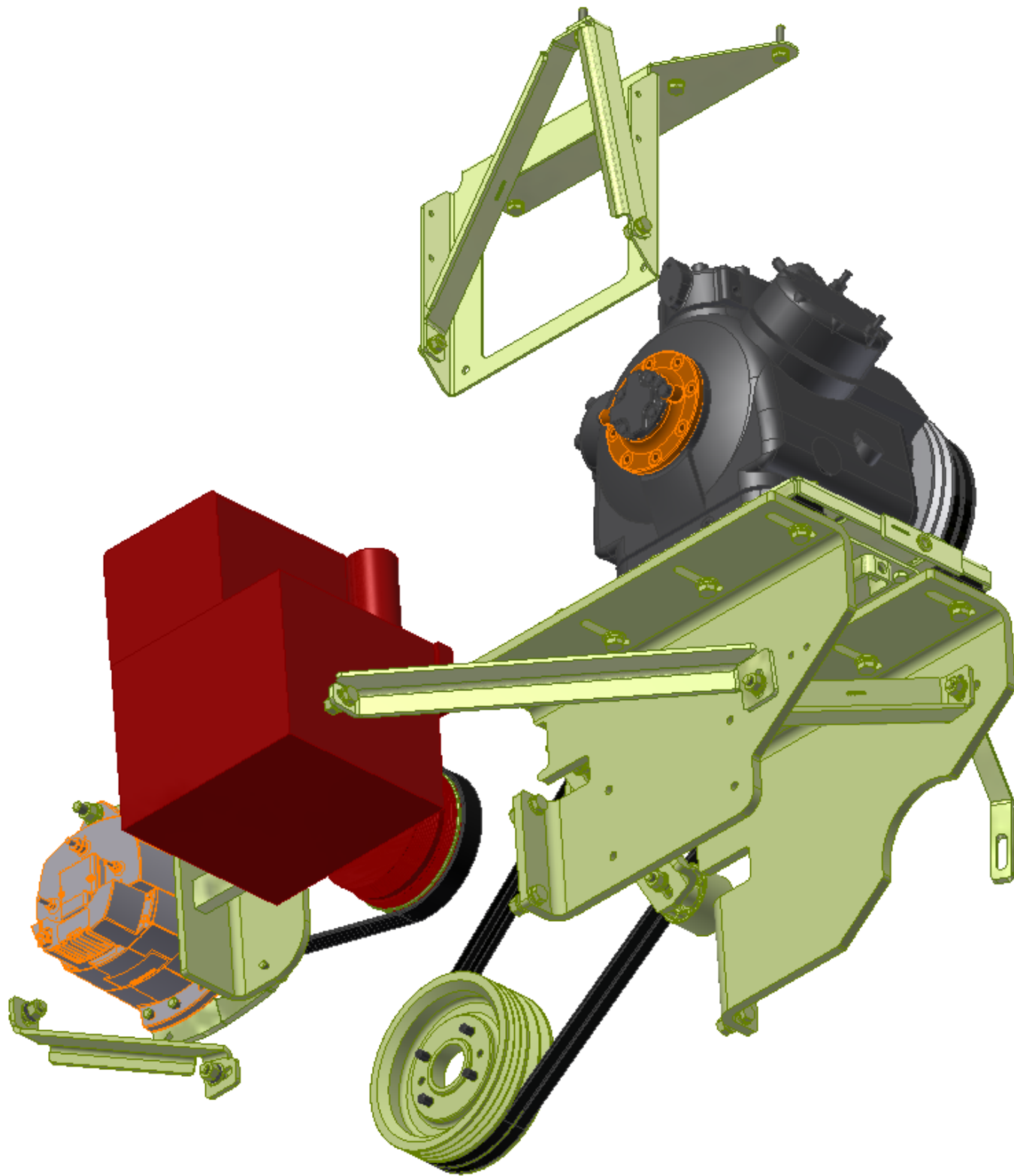


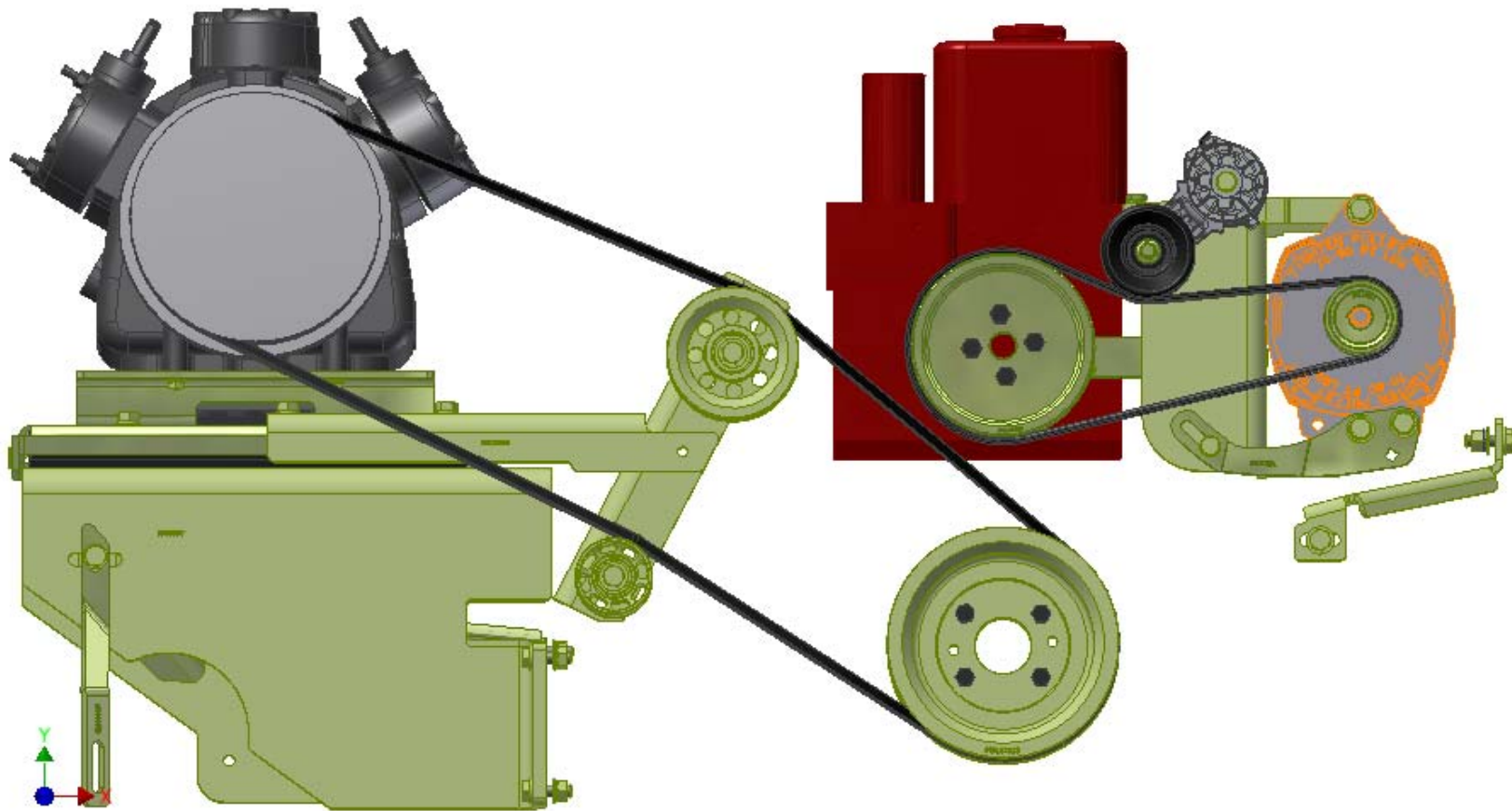
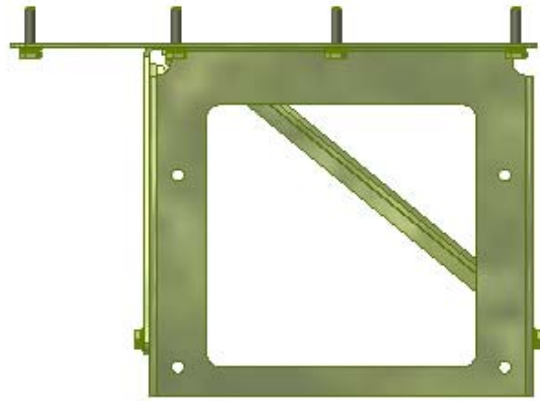
DRAWING UNIT OF MEASURE: MM (INCH)

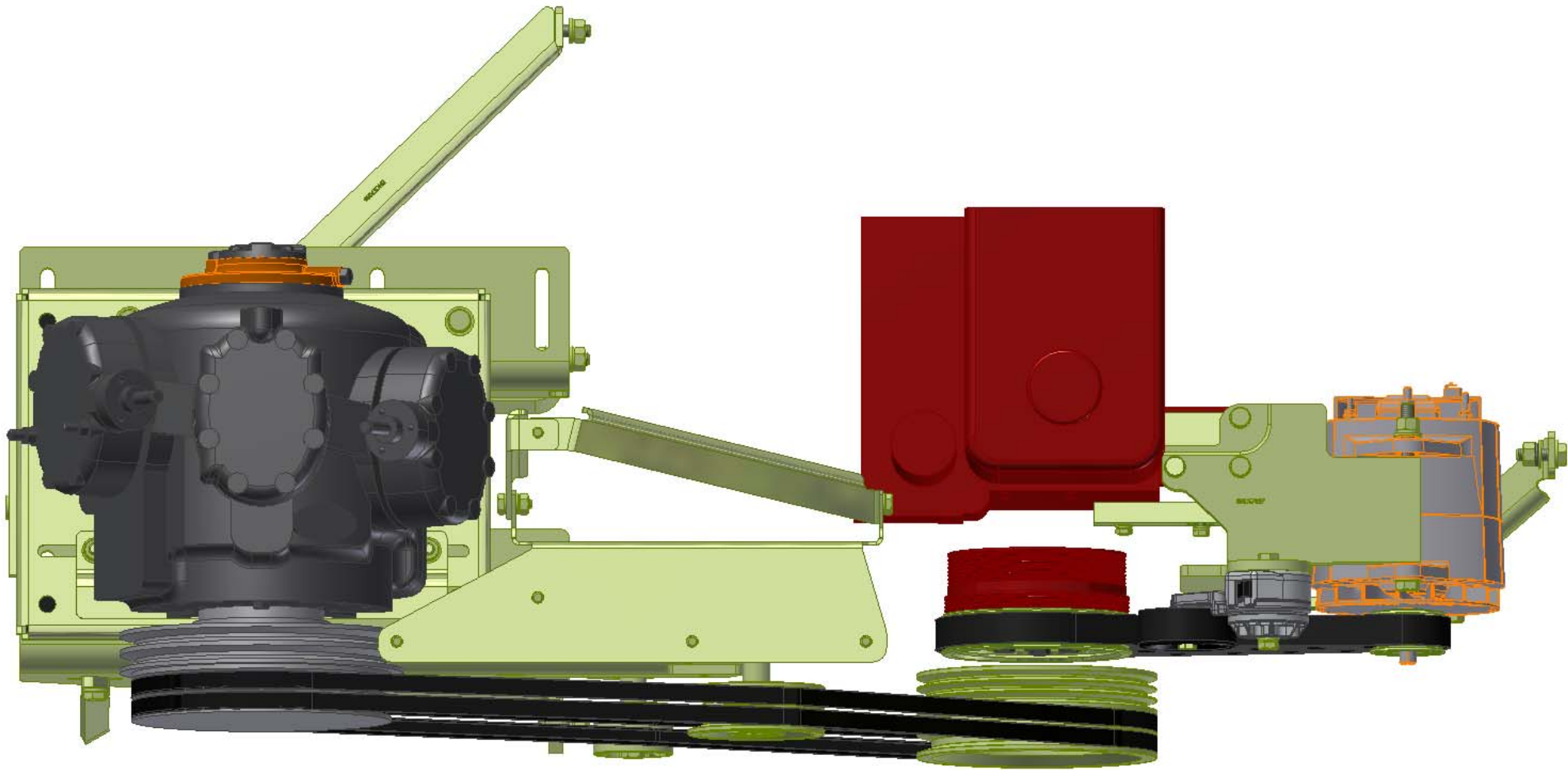
SIZE	DWG NO	REV
D	KAC64163	1
SCALE	1:2	SHEET 1 OF 1

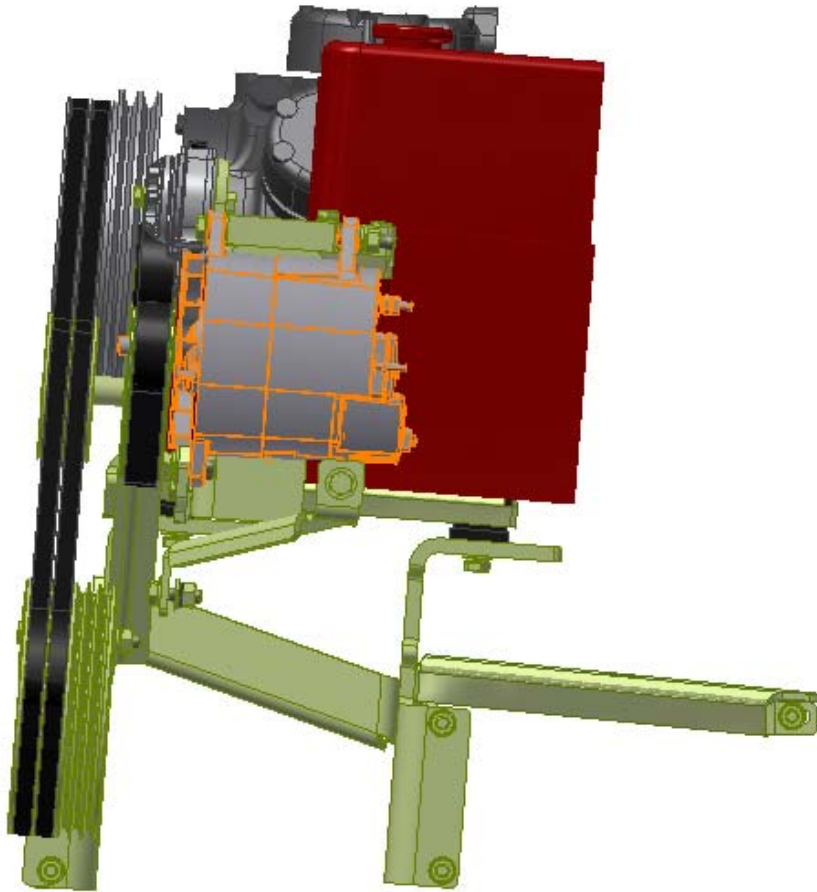
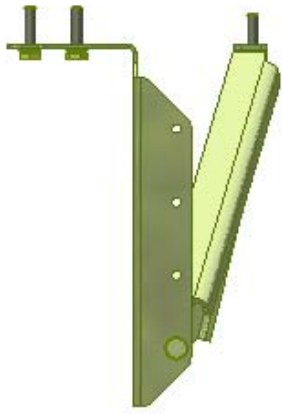


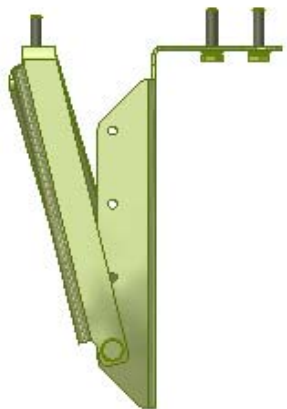
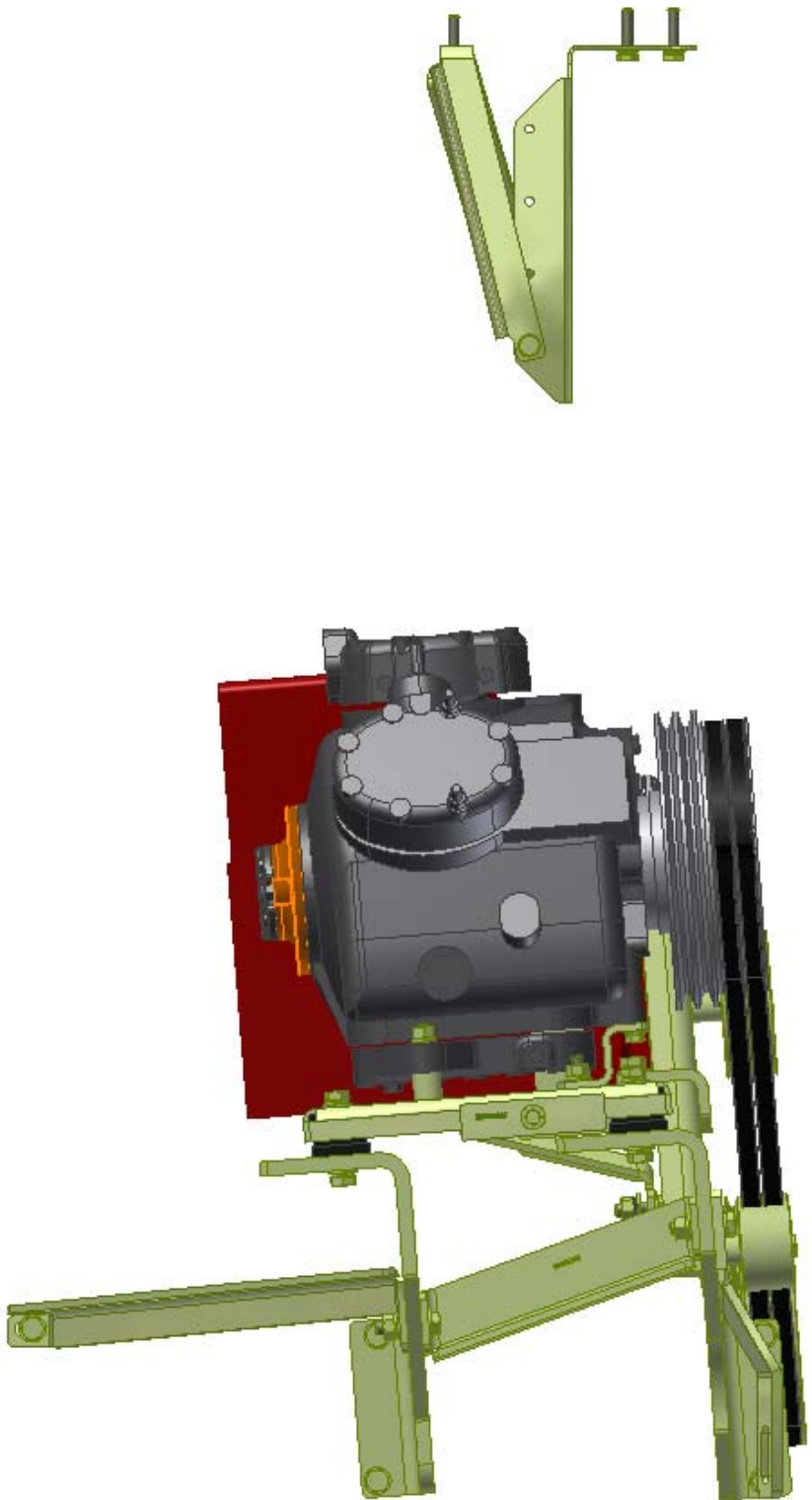












## **TransArctic A/C Compressor Mount Installation Disclaimer**

All compressor mounts should be installed by qualified and trained personnel using proper tools and equipment in safe working conditions following industry standard guidelines for motor vehicle service and repair.

The installer of any compressor mount purchased from TransArctic must undertake all responsibility of issues arising from that compressor bracket being installed on any vehicle. As well as insure that a **proper and sufficient ground** is established between the compressors' clutches and the vehicle's engine. Mount functionality, operation and durability can all be compromised by an incompetent installation.

Due to the many different situations, parameters and application criteria, which are beyond the compressor mount manufacturer's control, TransArctic does not warrant design, durability, or operational functionality of any compressor mount improperly installed by another party.

**With no implied guarantees it is the mount installer's strict responsibility to determine safety and functionality, of the compressor mount, at the time of installation.**

Please contact TransArctic with any issue arising from installation so we may better improve the product. If you have any reservations about the compressor mount integrity contact TransArctic immediately at 1-877-COLD-AIR.

**Mark OEM tensioner location**

**Install Kit**

**Check for Interferences**

**Check to ensure that the proper OEM tensioner orientation is maintained**

**Run engine with A/C system engaged for at least 10 minutes to run in belt**

**Check OEM tensioner orientation and adjust as required**

### **Responsabilidad limitada de TransArctic en la instalación del soporte del compresor**

Todos los soportes de los compresores deben ser instalados por personas calificadas y entrenadas, usando para ello los equipos y herramientas necesarios para esta labor en buenas condiciones y según las normas y guías para el servicio y/o reparación de motores de vehículos.

El instalador de los soportes comprados en TransArctic asume toda la responsabilidad de cualquier problema que surga en el soporte del compresor al vehículo; de igual manera es responsable que el cable a tierra sea conectado entre el embrague del compresor y el motor del vehículo.

Se advierte que el buen funcionamiento y la durabilidad del soporte pueden ser comprometidos por defectos en su instalación.

Debido a las diversas situaciones que se puedan presentar fuera del control del fabricante, TransArctic no garantiza el diseño, la durabilidad o el correcto funcionamiento de cualquier equipo inapropiadamente instalado por terceros.

**Esta sobreentendido que el Instalador del montaje del compresor es estrictamente responsable de la seguridad y funcionamiento del equipo en el momento de la instalación.**

Si tuviera algún problema o duda acerca de la instalación del soporte del compresor pongase en contacto inmediatamente con TransArctic al teléfono 1-877-COLD-AIR de modo que podamos mejorar nuestro producto.

**Note la ubicación del medidor de tensión OEM**

**Instale el equipo**

**Controlar si hay interferencias.**

**Asegure que el medidor de tensión mantenga la orientación justa.**

**Encienda el motor por lo menos 10 minutos con el sistema A/C enganchado para que la correa corra**

**Controle la orientación justa del medidor de tensión y ajuste a las condiciones requeridas del fabricante**