

Bill of Materials Listing

TransArctic Canada Inc.

5/11/2018
Page 1 of 1

Product Number		Description	Rev#	Date	Weight	Uof M	Yield
Line	Component Prod#	Description	Bin	Unit	Qty		
KMC96596		Mt Kit, ISL-D, HDX, TM-55/65, '16+	0	5/10/2018	156.31		0
10	BEL32388	Belt, Banded B gr,2388mm (94") (RBX91-2)		each	1		
20	BMC83125	Bkt, Weldm't, Adapter Pl, ISL, HDX, '13		each	1		
30	BMC83129	Bkt, Weldm't, Main Base, ISL, HDX, '13		each	1		
40	BMC90022	Bkt, Main, Idler, Weldm't, ISL, HDX, '16		each	1		
50	BMN80008	Vibration Isolator, Bar,16.50 x 2 x 1.50		each	2		
60	BMN80025	Bkt, Back, PL, Slide, IC, RE300		each	1		
70	BMZ00043	Bkt, Main, Base Pl, '13		each	1		
80	KBT65501	Kit, Platform, P/S, TM-55/65, '16		each	1		
90	KPC89022	Kit, Pulley, ISL, 8.9L, 2B/X,'13		each	1		
100	PUA05001	Pulley, Assy, Idler, B/S, 5", Stl, Plt		each	1		
110	PUA05012	Pulley, Assy, Idler,B/BX gr,5", STL,Plt		each	1		
120	SCD16012	Spacer, Col, Drl,16 mm x 34.9o x 12.3i		each	1		
130	SCD21912	Spacer, Col, Drl,21.9mm x 25.4o x 12.3i		each	1		
140	SLV17012	Sleeve, Pulley, 16.9o x 22.23mm x 12.32i		each	2		
150	KBC96595	Bag Kit, Fasteners, KMC96595/6		each	1		

Bill of Materials Listing

TransArctic Canada Inc.

5/11/2018
Page 1 of 1

Product Number		Description	Rev#	Date	Weight	Uof M	Yield
Line	Component Prod#	Description	Bin	Unit	Qty		
KBC96595		Bag Kit, Fasteners, KMC96595/6		11/21/2016	3.35		0
10	BTC10045	Bolt, Hex, 10 x 1.5 x 45mm, 10.9, Plt,FT		each	3		
20	BTC12080	Bolt, Hex, 12 x 1.75 x 80mm, 10.9,Plt,FT		each	2		
30	BTP08653	Bolt, Hex, 1/2-13unc, 6.5", 5, Plt, FT		each	1		
40	BTQ06125	Bolt, Hex, 3/8-16unc, 1.25", 8, Plt		each	5		
50	BTQ08101	Bolt, Hex, 1/2-20unf, 1.00", 8, Plt		each	4		
60	BTQ08125	Bolt, Hex, 1/2-13unc, 1.25", 8, Plt		each	2		
70	BTQ08151	Bolt, Hex, 1/2-20unf, 1.5", 8, Plt		each	2		
80	CSF08076	Capscrew, FH, 1/2-20unf x .75",Alloy,Plt		each	2		
90	CSF08101	Capscrew, FH, 1/2-20unf x 1.0",Alloy,Plt		each	4		
100	NTA10000	Nut, Hex, 10 x 1.5, 8.8, Plt		each	3		
110	NTA12000	Nut, Hex, 12 x 1.75, 8.8, Plt		each	2		
120	NTQ06000	Nut, Hex, 3/8-16unc, 8, Plt		each	5		
130	WFA10002	Washer, Flat, 10mm, Hvy, 8.8, Plt		each	6		
140	WFA12002	Washer, Flat, 12mm, Hvy, 8.8, Plt		each	2		
150	WFQ08000	Washer, Flat, 1/2", 8, Plt		each	8		
160	WFS06002	Washer, Flat, 3/8", L9, Plt		each	10		
170	WLA10000	Washer, Lock, 10mm, 8.8, Plt		each	3		
180	WLA12000	Washer, Lock, 12mm, 8.8, Plt		each	2		
190	WLQ06000	Washer, Lock, 3/8", 8, Plt		each	5		
200	WLQ08000	Washer, Lock, 1/2", 8, Plt		each	9		

Bill of Materials Listing

TransArctic Canada Inc.

12/5/2016

Page 1 of 1

Product Number		Description	Bin	Date	Weight	Uof M	Yield
Line	Component Prod#	Description		Unit	Qty		
KBT65501		Kit, Platform, P/S, TM-55/65, '16		8/10/2016	16.08		0
10	BMN80031	Bkt, Main, Slide, Assy, 05K, IC, RE300		each	1		
20	BMZ00056	Bkt, Comp, FRT, Z, TM-65/55, '13		each	1		
30	BMZ00057	Bkt, Comp, Rear, Z, TM-65/55, '13		each	1		
40	KBZ65501	Bag Kit, Fasteners, KBT65501		each	1		

Bill of Materials Listing

TransArctic Canada Inc.

10/31/2016
Page 1 of 1

Product Number	Description	Date	Weight	Uof M	Yield
Line Component Prod#	Description	Bin Unit	Qty		
KBZ65501	Bag Kit, Fasteners, KBT65501	8/10/2016	0.69		0
10	BTC12035				
	Bolt, Hex, 12 x 1.75 x 35mm, 10.9,Plt,FT	each	4		
20	NTP07000				
	Nut, Hex, 7/16-14unc, 5, Plt	each	4		
30	WFA12000				
	Washer, Flat, 12mm, 8.8, Plt	each	4		
40	WFN07000				
	Washer, Flat, 7/16", 2, Plt	each	4		
50	WLA12000				
	Washer, Lock, 12mm, 8.8, Plt	each	4		
60	WLQ07000				
	Washer, Lock, 7/16", 8, Plt	each	4		

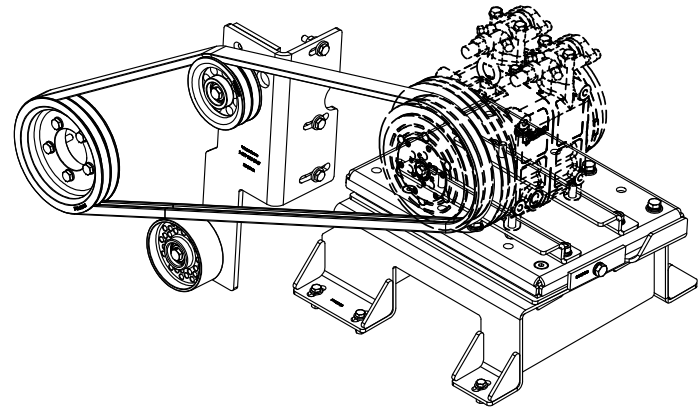
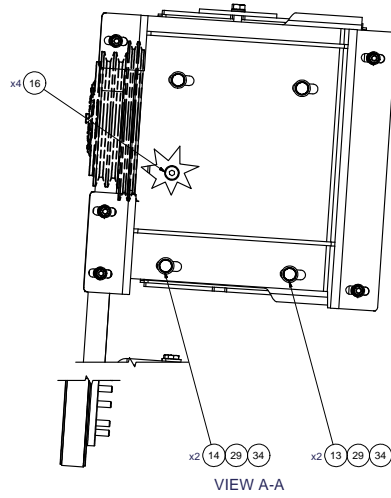
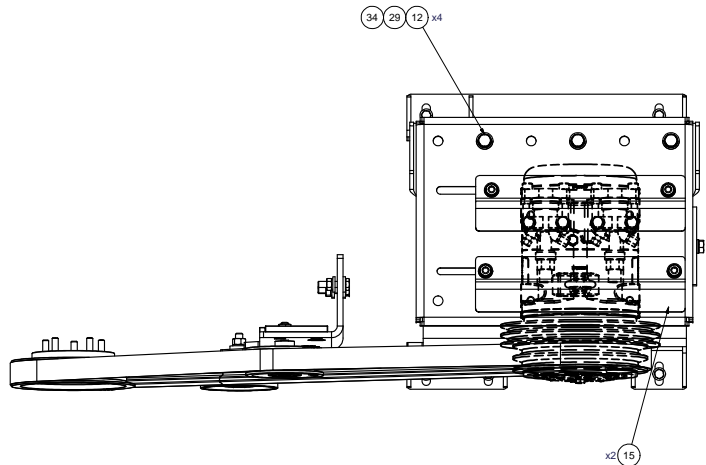
Bill of Materials Listing

TransArctic Canada Inc.

1/13/2017
Page 1 of 1

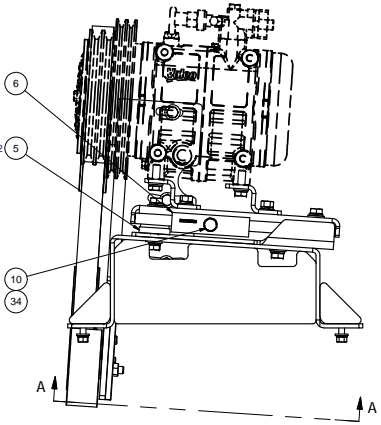
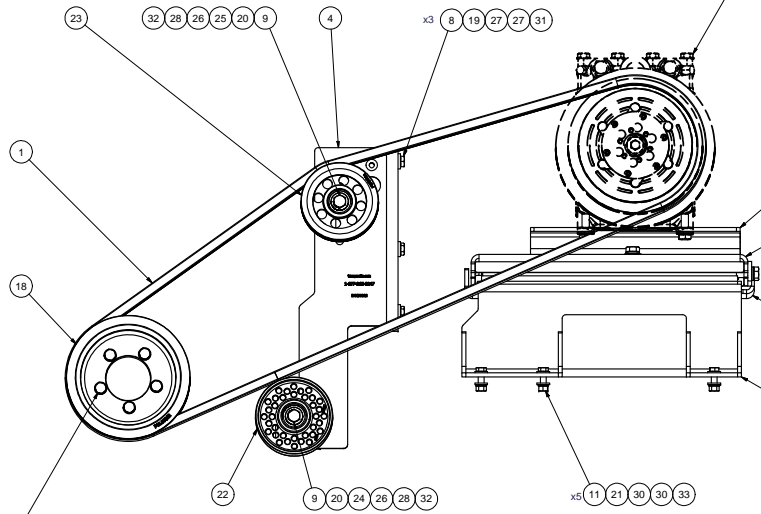
Product Number	Description	Date	Weight	Uof M	Yield
Line Component Prod#	Description	Bin Unit	Qty		
KPC89022	Kit, Pulley, ISL, 8.9L, 2B/X,'13		10/15/2013	11.51	0
10	PUL89022		Pulley, Crank, ISL, 8.9L, 2B/X, 8", '13	each	1
20	BTC10050		Bolt, Hex, 10 x 1.5 x 50mm, 10.9, Plt	each	5
30	WFA10000		Washer, Flat, 10mm, 8.8, Plt	each	5

8 7 6 5 4 3 2 1



ISOMETRIC VIEW

NOTE:
SHOWING TRANSARCtic
COMPRESSOR PART#
CMV39643 (TM-55)
CMV38824(TM-65)
AS REFERENCE.



NOTE:
TORQUE TO: 48 FT-LB PLAIN & LUBRICATED W/ CLEAN ENGINE OIL (15W-40)
(HEX BOLT CAPSCREW M10 x 1.5 x 50mm)
TIGHTEN IN TWO STEPS IN A CRIS-CROSS TIGHTENING SEQUENCE PATTERN.

NOTES:
1) USE SERVICABLE THREADLOCKER ON ALL FASTENERS TO ENGINE COMPONENTS AND TORQUE ALL BOLTS TO S.A.E. SPECIFICATIONS.
2) SEE 'TRANSARCtic A/C COMPRESSOR MOUNT INSTALLATION DISCLAIMER'.

ITEM	QTY	U/M	PART NUMBER	DESCRIPTION
34	9	EACH	WLO08000	WASHER, LOCK, 1/2", 8, PLT
33	5	EACH	WLO06000	WASHER, LOCK, 3/8", 8, PLT
32	2	EACH	WLA12000	WASHER, LOCK, 12mm, 8.8, PLT
31	3	EACH	WLA10000	WASHER, LOCK, 10mm, 8.8, PLT
30	10	EACH	WFS06002	WASHER, FLAT, 3/8", L9, PLT
29	8	EACH	WFO80000	WASHER, FLAT, 1/2", 8, PLT
28	2	EACH	WFA12002	WASHER, FLAT, 12mm, HVY, 8.8, PLT
27	6	EACH	WFA10002	WASHER, FLAT, 10mm, HVY, 8.8, PLT
26	2	EACH	SLV17012	SLEEVE, PULLEY, 16.90 x 22.23 mm x12.19i
25	1	EACH	SCD21912	SPACER, COL, DRL, 21.9mm x 31.80 x12.0i
24	1	EACH	SCD16012	SPACER, COL, DRL, 16 mm x 31.80 x 12.0i
23	1	EACH	PUA05012	PULLEY, ASSY, IDLER, B/BX gr, 5" STL, PLT
22	1	EACH	PUA05001	PULLEY, ASSY, IDLER, B/S, 5", STL, PLT
21	5	EACH	NTG06000	NUT, HEX, 3/8-16UNC, 8, PLT
20	2	EACH	NTA12000	NUT, HEX, 12 x 1.75, 8.8, PLT
19	3	EACH	NTA10000	NUT, HEX, 10 x 1.5, 8.8, PLT
18	1	EACH	KPC89022	KIT, PULLEY, ISL, 8.9L, 2B/X, '13
17	1	EACH	KBT65501	KIT, PLATFORM, P/S, TM-55/65, '16
16	4	EACH	CSF08101	CAPSCREW, FH, 1/2-20UNF x 1", ALLOY, PLT
15	2	EACH	CSF08076	CAPSCREW, FH, 1/2-20UNF x .75", ALLOY, PLT
14	2	EACH	BTO08151	BOLT, HEX, 1/2-20UNF x 1.50, 8, PLT
13	2	EACH	BTO08125	BOLT, HEX, 1/2-13UNC x 1.25, 8, PLT
12	4	EACH	BTO08101	BOLT, HEX, 1/2-20UNF x 1.00, 8, PLT
11	5	EACH	BTO06125	BOLT, HEX, 3/8-16UNC x 1.25, 8, PLT
10	1	EACH	BTP08653	BOLT, HEX, 1/2-13UNC x 6.50, 5, PLT, FT
9	2	EACH	BTC12080	BOLT, HEX, 12 x 1.75 x 80mm, 10.9, PLT
8	3	EACH	BTC10045	BOLT, HEX, 10 x 1.5 x 45mm, 10.9, PLT
7	1	EACH	BMZ00043	BKT, MAIN, BASE PL, '13
6	1	EACH	BMN80025	BKT, BACK, PL, SLIDE, IC, RE300
5	2	EACH	BMN80008	VIBRATION ISOLATOR, BAR, 16.50 x 2 x 1.50
4	1	EACH	BMC90022	BKT, MAIN, IDLER, WELDMT, ISL, HDX, '16
3	1	EACH	BMC83129	BKT, WELDMT, MAIN BASE, ISL, HDX, '13
2	1	EACH	BMC83125	BKT, WELDMT, ADAPTER PL, ISL, HDX, '13
1	1	EACH	BEL32388	BELT, BANDED B gr, 2388mm (9'4")

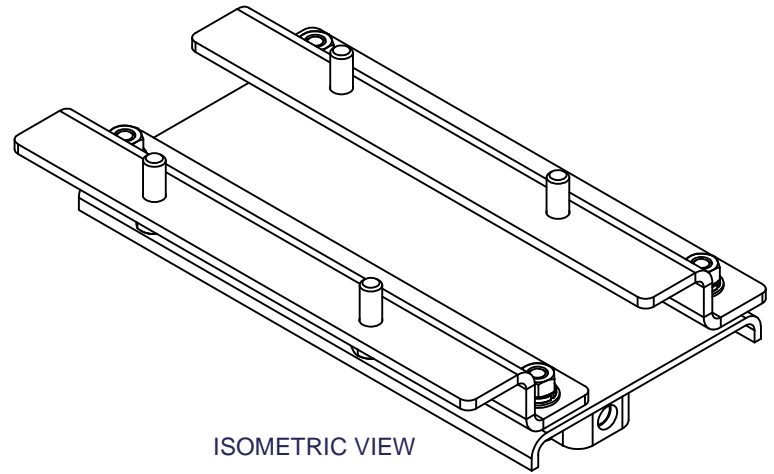
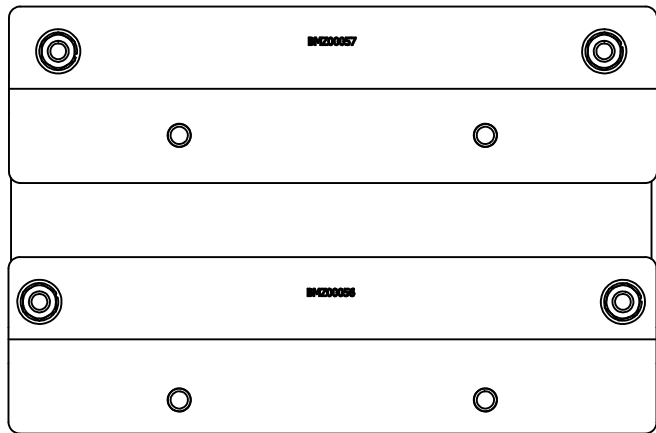
BILL OF MATERIALS
TRANSARCtic INC.

UNSPECIFIED TOLERANCES:	ALL DIMS	THIRD ANGLE PROJECTION
ONE DECIMAL PLACE (X.0)	0.05 (FRACTIONAL)	
TWO DECIMAL PLACES (X.00)	0.005 (FRACTIONAL)	
THREE DECIMAL PLACES (X.000)	0.0005 (FRACTIONAL)	

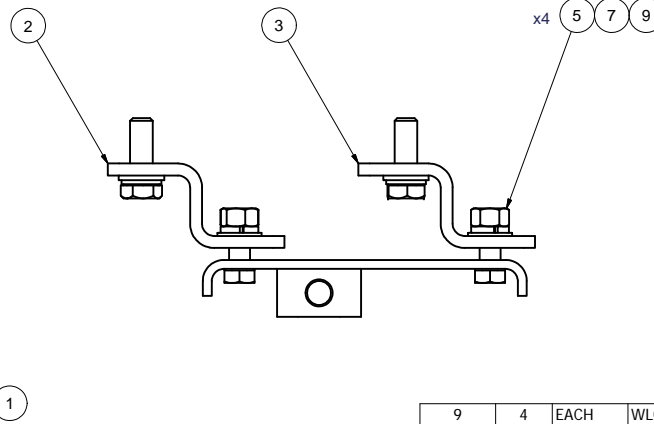
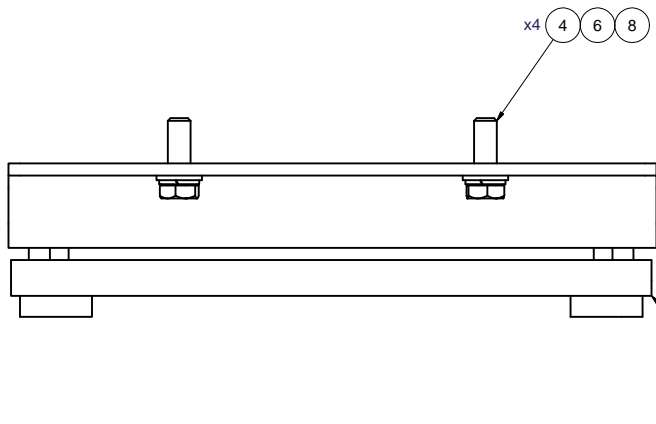
BROWN	4/23/2018
Checked	4/23/2018
Released to Production	4/23/2018
Approved	4/23/2018
DATE	4/23/2018

TITLE	MT KIT, ISL, HDX, TM-55/ 65, '16+
SIZE	D
DWG NO	KMC96596
SCALE	1:1
SHEET	1 OF 1

8 7 6 5 4 3 2 1



ISOMETRIC VIEW



ITEM	QTY	U/M	PART NUMBER	DESCRIPTION
9	4	EACH	WLQ07000	WASHER, LOCK, 7/16", 8, PLT
8	4	EACH	WLA12000	WASHER, LOCK, 12mm, 8.8, PLT
7	4	EACH	WFO07000	WASHER, FLAT, 7/16", 2, PLT
6	4	EACH	WFA12000	WASHER, FLAT, 12mm, 8.8, PLT
5	4	EACH	NTP07000	NUT, HEX, 7/16-14UNC, 5, PLT
4	4	EACH	BTC12035	BOLT, HEX, 12 x 1.75 x 35mm, 10.9, PLT
3	1	EACH	BMZ00057	BKT, COMP, REAR, Z, TM-65/55, '13
2	1	EACH	BMZ00056	BKT, COMP, FRT, Z, TM-65/55, '13
1	1	EACH	BMN80031	BKT, MAIN, SLIDE, ASSY, 05K, IC, RE300

BILL OF MATERIALS

DRAWN	jrodriguez	8/8/2016
CHECKED	Val Jakowlew	8/8/2016
APPROVED	James Stewart	8/8/2016
MFG	James Stewart	8/8/2016
APPROVED	Dale Mason	8/8/2016

TRANSARCTIC INC.

TITLE
KIT, PLATFORM, P/S, TM-55/65, '16

SIZE
C

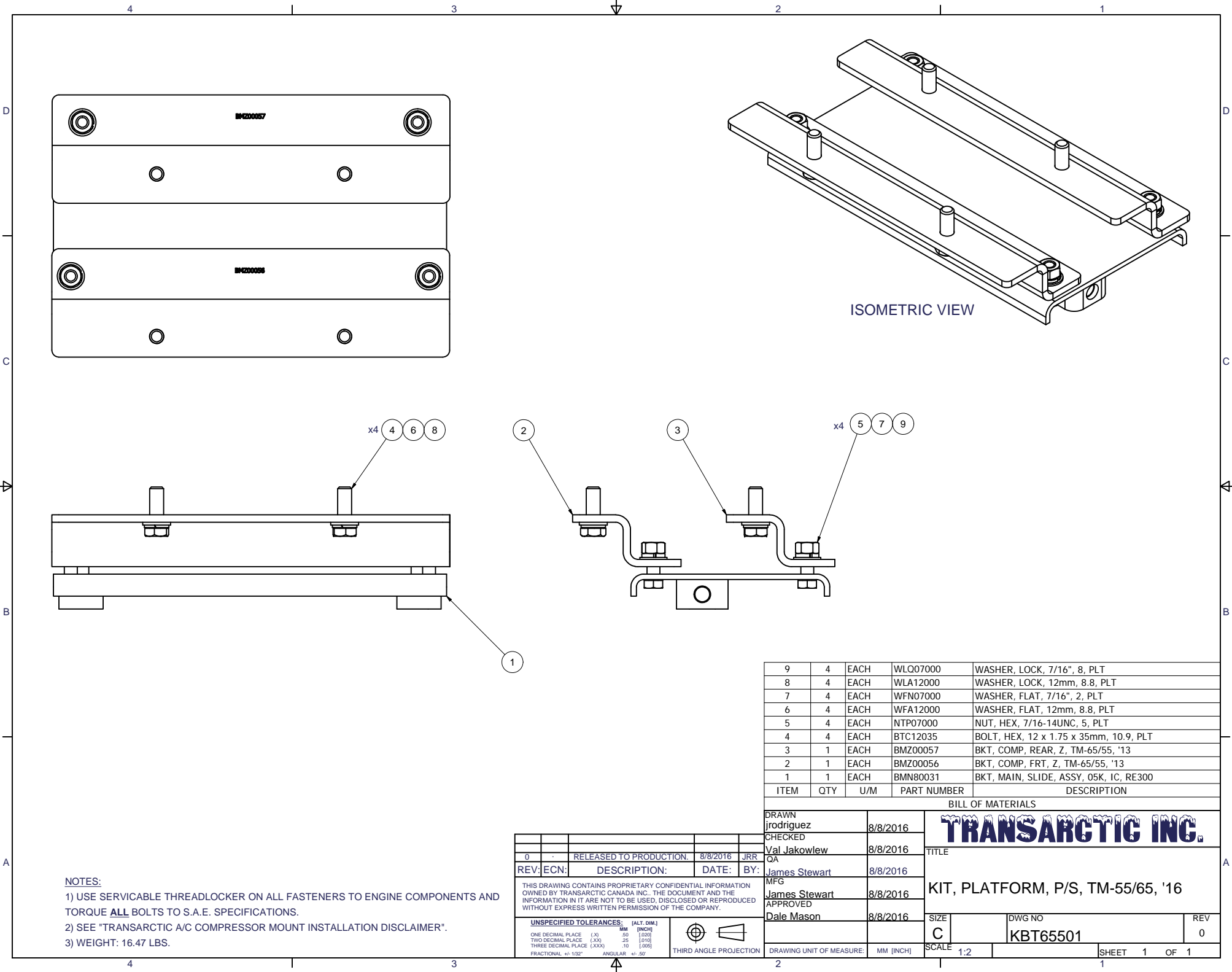
DWG NO
KBT65501

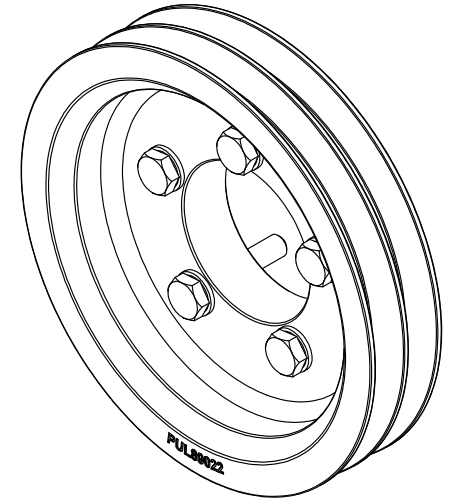
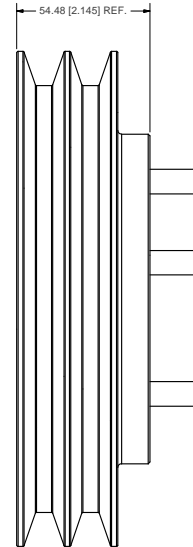
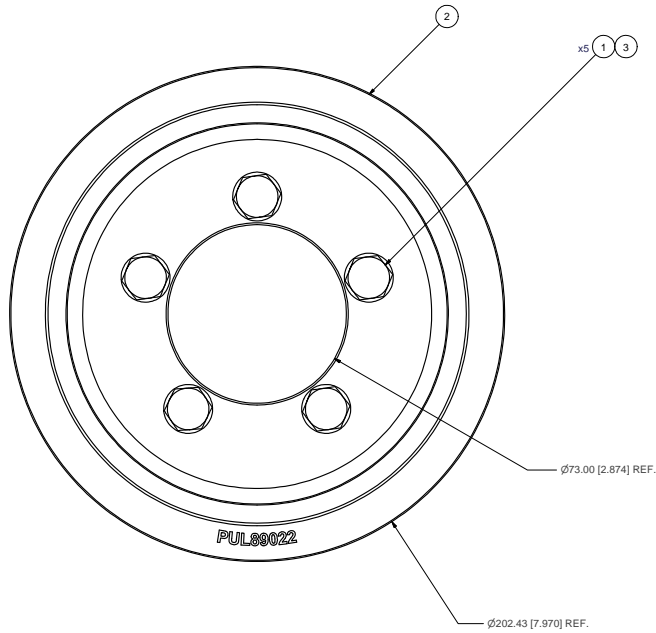
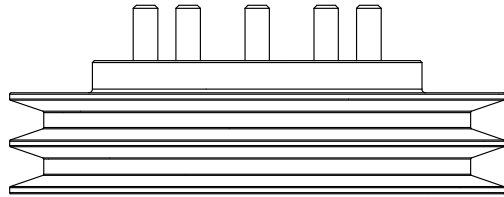
REV
0

0	-	RELEASED TO PRODUCTION	8/8/2016	JRR
REV	ECN	DESCRIPTION	DATE	BY
THIS DRAWING CONTAINS PROPRIETARY CONFIDENTIAL INFORMATION OWNED BY TRANSARCTIC CANADA INC. THE DOCUMENT AND THE INFORMATION IN IT ARE NOT TO BE USED, DISCLOSED OR REPRODUCED WITHOUT EXPRESS WRITTEN PERMISSION OF THE COMPANY.				
UNSPECIFIED TOLERANCES: (ALT. DIM.)				
ONE DECIMAL PLACE (.X)	MM	(.020)	[.020]	
TWO DECIMAL PLACE (.XX)	MM	.25	[.010]	
THREE DECIMAL PLACE (.XXX)	MM	.10	[.005]	
FRACTIONAL +/- 1/32"	ANGULAR	+/- .50°	THIRD ANGLE PROJECTION	

NOTES:

- 1) USE SERVICABLE THREADLOCKER ON ALL FASTENERS TO ENGINE COMPONENTS AND TORQUE **ALL** BOLTS TO S.A.E. SPECIFICATIONS.
- 2) SEE "TRANSARCTIC A/C COMPRESSOR MOUNT INSTALLATION DISCLAIMER".
- 3) WEIGHT: 16.47 LBS.





ISOMETRIC VIEW

- NOTES:**
- 1) USE SERVICABLE THREADLOCKER ON ALL FASTENERS TO ENGINE COMPONENTS AND TORQUE ALL BOLTS TO S.A.E. SPECIFICATIONS.
 - 2) SEE "TRANSARCTIC A/C COMPRESSOR MOUNT INSTALLATION DISCLAIMER".
 - 3) WT:≈ 11.56 LBS

ITEM	QTY	U/M	PART NUMBER	DESCRIPTION
3	5	EACH	WFA10000	WASHER, FLAT, 10mm, 8.8, PLT
2	1	EACH	PUL89022	PULLEY, CRANK, ISL, 8.9L, 2B/X, 8", '13
1	5	EACH	BTCT0050	BOLT, HEX, 10 x 1.5 x 50mm, 10.9, PLT

BILL OF MATERIALS

TRANSARCTIC INC.

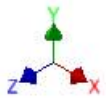
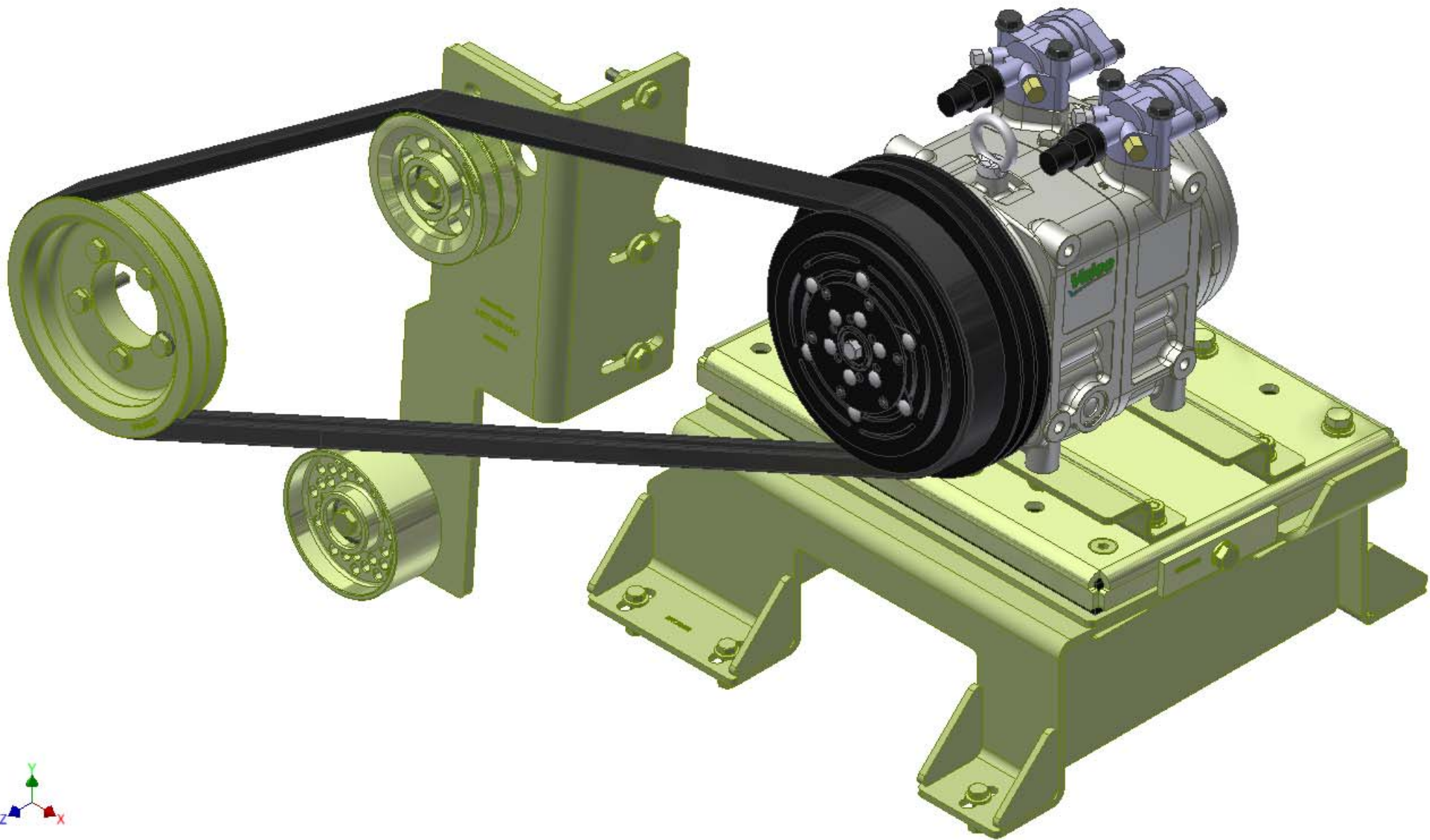
REV	DATE	BY	DESCRIPTION
0	10/15/2013	JRB	RELEASED TO PRODUCTION
1	10/15/2013	James Stewart	CHANGED
2	10/15/2013	Ron Ingram	APPROVED
3	10/15/2013	Dale Mason	APPROVED

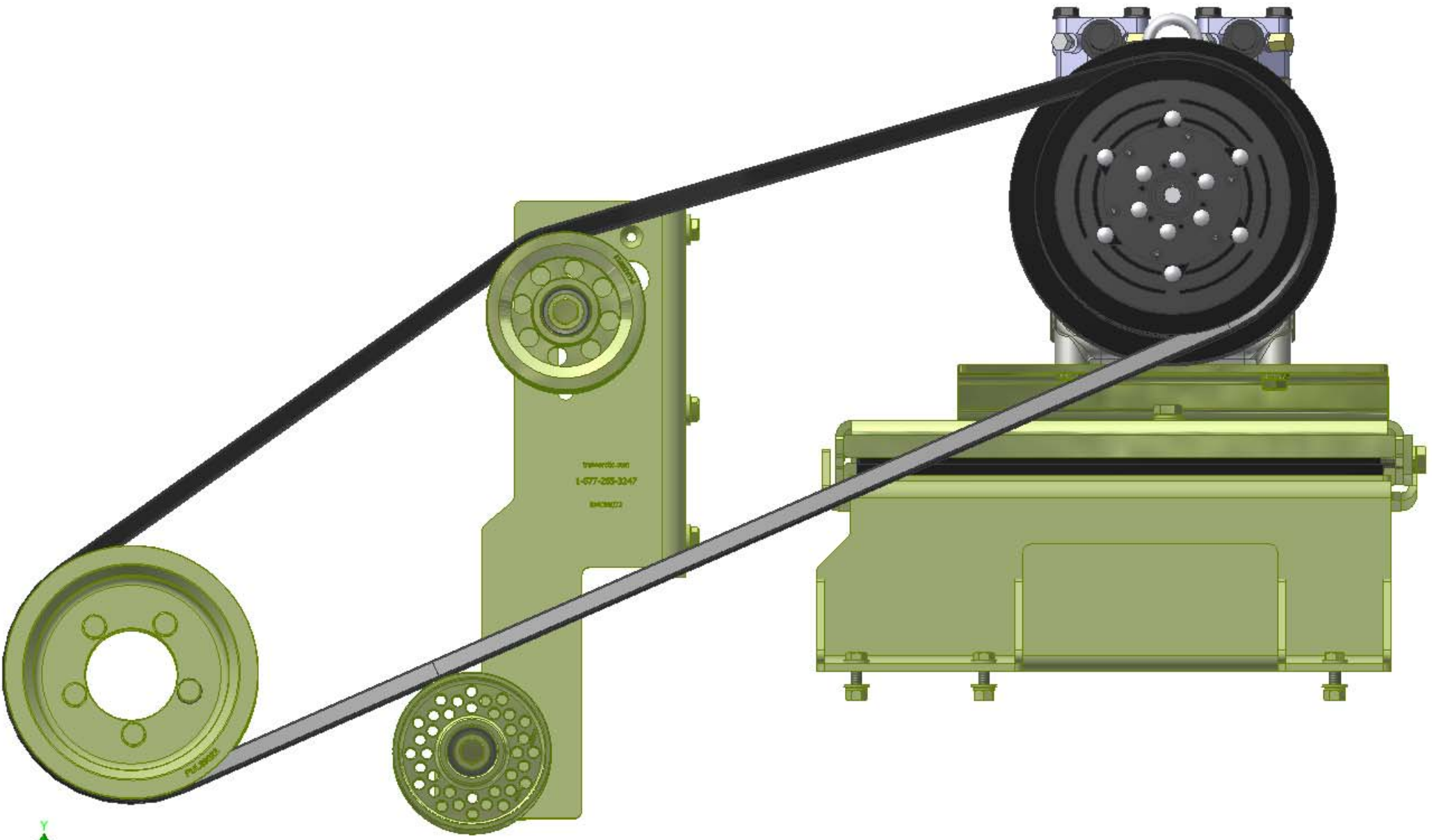
DRAWN	10/15/2013	TITLE	
CHECKED	10/15/2013		
DRAWN BY: jrodriquez		TITLE	
CHECKED BY: val.jakowlew		KIT, PULLEY, ISL, 8.9L, 2B/X, '13	
APPROVED BY: James Stewart		DWG NO	
APPROVED BY: Ron Ingram		D	
APPROVED BY: Dale Mason		KPC89022	
DATE: 10/15/2013		SCALE	
DATE: 10/15/2013		1:1	
DATE: 10/15/2013		SHEET 1 OF 1	

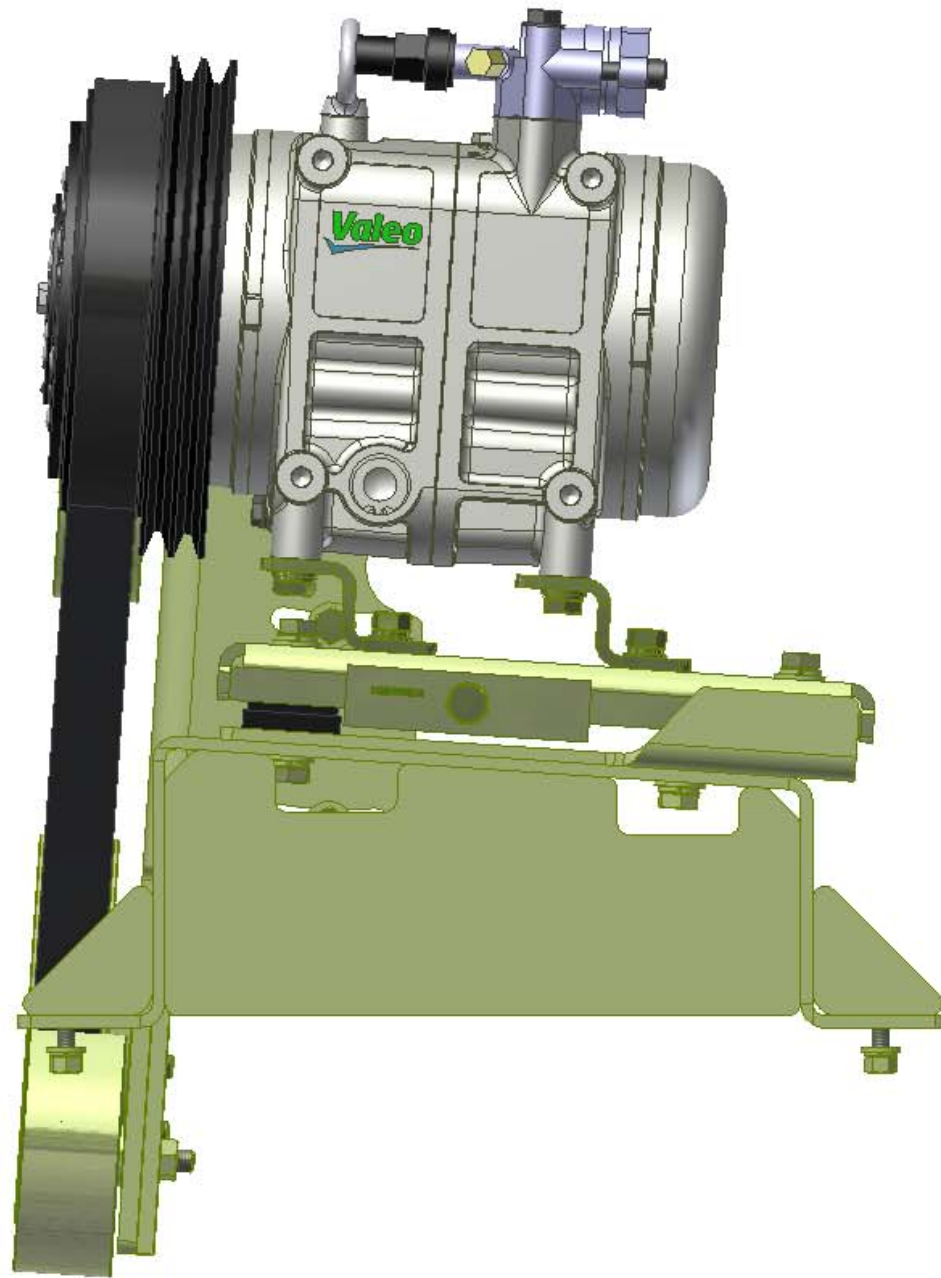
UNSPECIFIED TOLERANCES: ALL DIMS PER
 ONE DECIMAL PLACE (X) .05 (FRACTIONAL)
 TWO DECIMAL PLACE (XX) .01 (FRACTIONAL)
 THREE DECIMAL PLACE (XXX) .005 (FRACTIONAL)
 ANGULAR ± .01

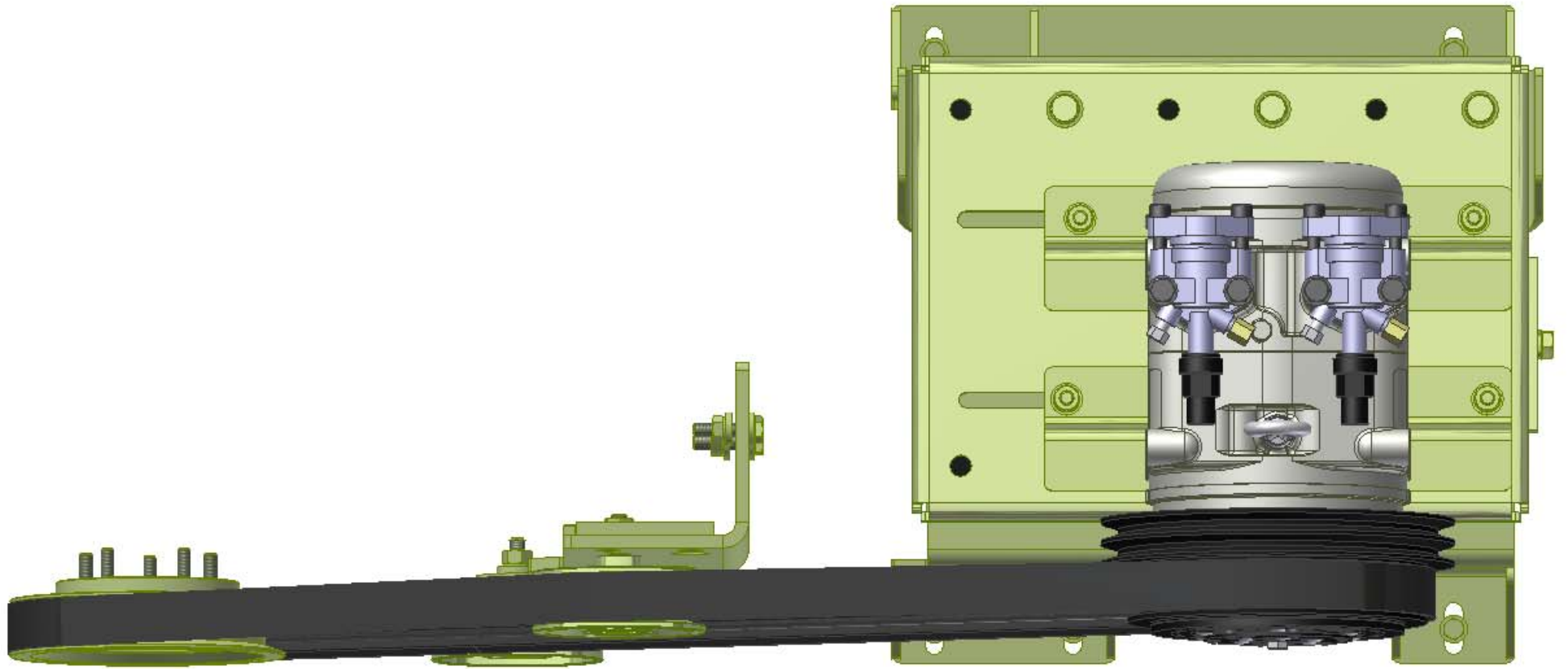
THIRD ANGLE PROJECTION

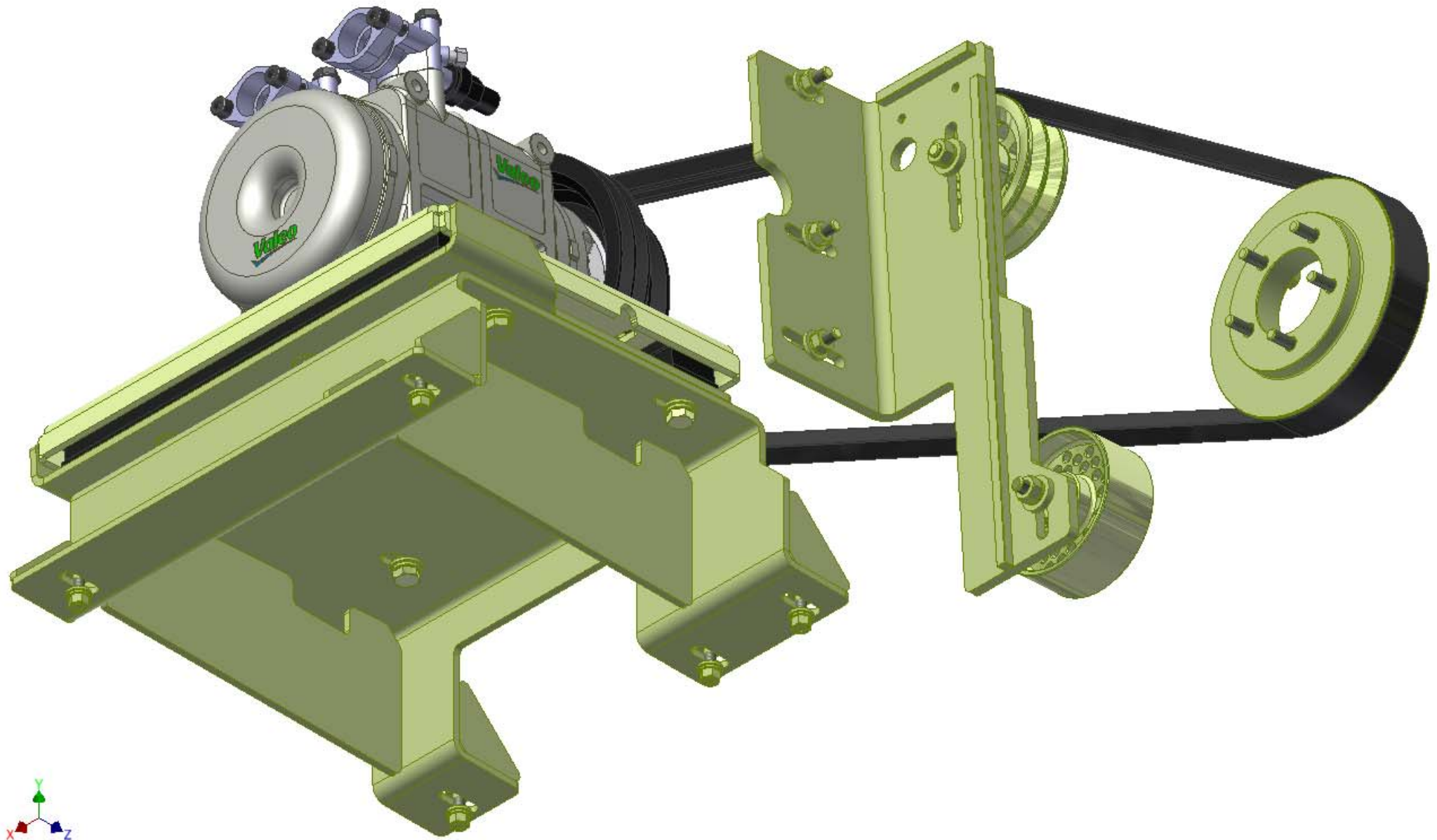
DRAWING UNIT OF MEASURE: MM (INCH)











TransArctic A/C Compressor Mount Installation Disclaimer

All compressor mounts should be installed by qualified and trained personnel using proper tools and equipment in safe working conditions following industry standard guidelines for motor vehicle service and repair.

The installer of any compressor mount purchased from TransArctic must undertake all responsibility of issues arising from that compressor bracket being installed on any vehicle. As well as insure that a **proper and sufficient ground** is established between the compressors' clutches and the vehicle's engine. Mount functionality, operation and durability can all be compromised by an incompetent installation.

Due to the many different situations, parameters and application criteria, which are beyond the compressor mount manufacturer's control, TransArctic does not warrant design, durability, or operational functionality of any compressor mount improperly installed by another party.

With no implied guarantees it is the mount installer's strict responsibility to determine safety and functionality, of the compressor mount, at the time of installation.

Please contact TransArctic with any issue arising from installation so we may better improve the product. If you have any reservations about the compressor mount integrity contact TransArctic immediately at 1-877-COLD-AIR.

Mark OEM tensioner location

Install Kit

Check for Interferences

Check to ensure that the proper OEM tensioner orientation is maintained

Run engine with A/C system engaged for at least 10 minutes to run in belt

Check OEM tensioner orientation and adjust as required

Responsabilidad limitada de TransArctic en la instalación del soporte del compresor

Todos los soportes de los compresores deben ser instalados por personas calificadas y entrenadas, usando para ello los equipos y herramientas necesarios para esta labor en buenas condiciones y según las normas y guías para el servicio y/o reparación de motores de vehículos.

El instalador de los soportes comprados en TransArctic asume toda la responsabilidad de cualquier problema que surga en el soporte del compresor al vehículo; de igual manera es responsable que el cable a tierra sea conectado entre el embrague del compresor y el motor del vehículo.

Se advierte que el buen funcionamiento y la durabilidad del soporte pueden ser comprometidos por defectos en su instalación.

Debido a las diversas situaciones que se puedan presentar fuera del control del fabricante, TransArctic no garantiza el diseño, la durabilidad o el correcto funcionamiento de cualquier equipo inapropiadamente instalado por terceros.

Esta sobreentendido que el Instalador del montaje del compresor es estrictamente responsable de la seguridad y funcionamiento del equipo en el momento de la instalación.

Si tuviera algún problema o duda acerca de la instalación del soporte del compresor pongase en contacto inmediatamente con TransArctic al teléfono 1-877-COLD-AIR de modo que podamos mejorar nuestro producto.

Note la ubicación del medidor de tensión OEM

Instale el equipo

Controlar si hay interferencias.

Asegurese que el medidor de tensión mantenga la orientación justa.

Encienda el motor por lo menos 10 minutos con el sistema A/C enganchado para que la correa corra

Controle la orientación justa del medidor de tensión y ajuste a las condiciones requeridas del fabricante