

Bill of Materials Listing

TransArctic Canada Inc.

3/19/2009
Page 1 of 1

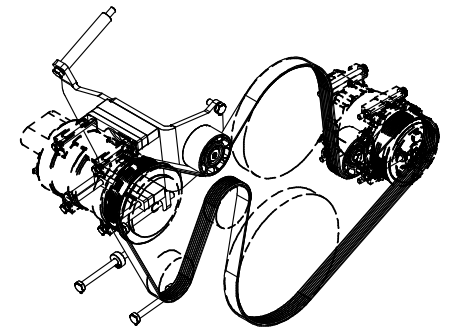
Product Number	Description	Date	Weight	Uof M	Yield
Line Component Prod#	Description	Bin Unit	Qty		
KMM62300	Mt kit,7.2L MBE926,TH C2,TM-21/TM-16,'07	2/22/2007	16.83		0
10 BEL82388	Belt, 8gr, 2388mm (94.0") (5080940)	each	1		
20 BMM60045	Bkt, Main, Weldmt, TM-21, C2, MBE926,'07	each	1		
25 BMS16022	Bkt, TM-16 Spacer Plate	each	2		
27 BMS16023	Bkt, 12.7mm Spacer Plate	each	2		
30 PUL80076	Pulley, Idler, Backside, P8, 76d (89062)	each	2		
40 SCD12010	Spacer, Col, Drl,111.6mm x19.05o x10.32i	each	1		
50 SCD09512	Spacer, Col, Drl, 9.53mm x 25.4o x12.32i	each	1		
60 SCD09510	Spacer, Col, Drl, 9.53mm x 25.4o x10.32i	each	2		
70 SLV17012	Sleeve, Pulley, 16.9o x 22.23mm x 12.32i	each	1		
80 KBM62300	Bag Kit, Fasteners, KMM62300	each	1		

Bill of Materials Listing

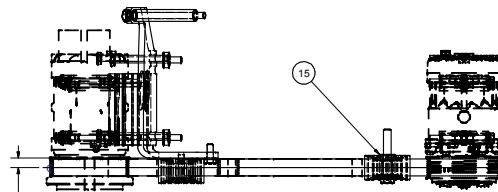
TransArctic Canada Inc.

3/19/2009
Page 1 of 1

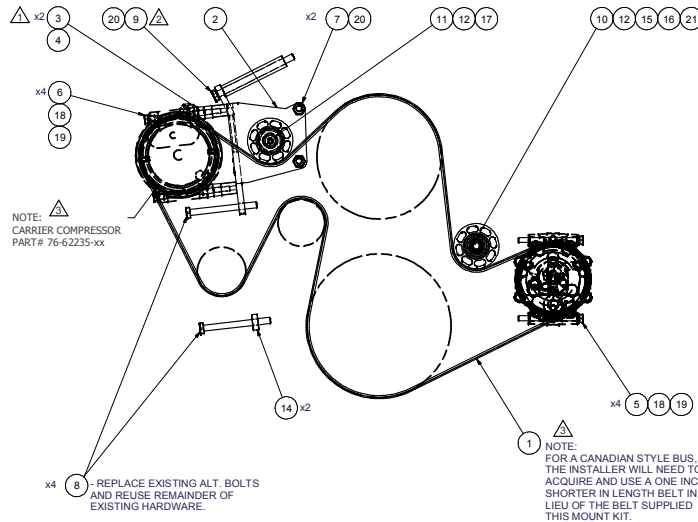
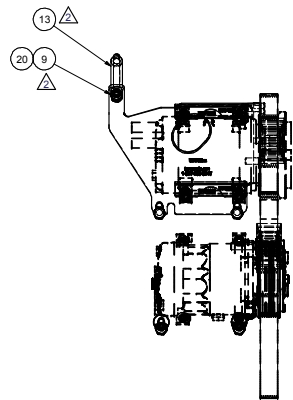
Product Number	Description	Date	Weight	Uof M	Yield
Line Component Prod#	Description	Bin Unit	Qty		
KBM62300	Bag Kit, Fasteners, KMM62300		2/26/2007	1.96	0
5	BTC12080	Bolt, Hex, 12 x 1.75 x 80mm, 10.9,Plt,FT	each	1	
10	BTC10140	Bolt, Hex, 10 x 1.5 x 140mm, 10.9, Plt	each	1	
20	BTC10110	Bolt, Hex, 10 x 1.5 x 110mm, 10.9, Plt	each	4	
40	BTC10025	Bolt, Hex, 10 x 1.5 x 25mm, 10.9, Plt	each	2	
50	BTC08120	Bolt, Hex, 8 x 1.25 x 120mm, 10.9, Plt	each	4	
55	BTC08100	Bolt, Hex, 8 x 1.25 x 100mm, 10.9, Plt	each	4	
60	BTS10001	Bolt, Shoulder, 10mm (89064)	each	1	
70	WDS17001	Washer, Dust Cover (89060)	each	1	
80	WFA08000	Washer, Flat, 8mm, 8.8, Plt	each	8	
90	WLA08000	Washer, Lock, 8mm, 8.8, Plt	each	8	
100	WLA10000	Washer, Lock, 10mm, 8.8, Plt	each	3	
110	WLA12000	Washer, Lock, 12mm, 8.8, Plt	each	1	



ISOMETRIC VIEW



15.48 (610) REF.



NOTE: CARRIER COMPRESSOR PART # 76-62235-xx

NOTE: FOR A CANADIAN STYLE BUS, THE INSTALLER WILL NEED TO ACQUIRE AND USE A ONE INCH SHORTER IN LENGTH BELT IN LIEU OF THE BELT SUPPLIED IN THIS MOUNT KIT.

NOTES:
 1) USE SERVICABLE THREADLOCKER ON ALL FASTENERS TO ENGINE COMPONENTS AND TORQUE ALL BOLTS TO S.A.E. SPECIFICATIONS.
 2) SEE "TRANSARGTIC A/C COMPRESSOR MOUNT INSTALLATION DISCLAIMER".

ITEM	QTY	U/M	PART NUMBER	DESCRIPTION
21	1	EACH	WLA12000	WASHER, LOCK, 12mm, 8.8, PLT
20	3	EACH	WLA10000	WASHER, LOCK, 10mm, 8.8, PLT
19	8	EACH	WLA08000	WASHER, LOCK, 8mm, 8.8, PLT
18	8	EACH	WFA08000	WASHER, FLAT, 8mm, 8.8, PLT
17	1	EACH	WDS17001	WASHER, DUST COVER (PUL80076)
16	1	EACH	SLV17012	SLEEVE, PULLEY, 16.90 x 22.23 mm x12.19
15	1	EACH	SCD09512	SPACER, COL, DRL, 9.53mm x 25.40 x12.32
14	2	EACH	SCD09510	SPACER, COL, DRL, 9.53mm x 25.40 x10.32
13	1	EACH	SCD12010	SPACER, COL, DRL, 11.6mm x19.05x10.32
12	2	EACH	PUL80076	PULLEY, IDLER, BACKSIDE, P8, 76D, 39W
11	1	EACH	BTS10001	BOLT, SHOULDER, 10mm (IDLER PULLEY)
10	1	EACH	BTC12080	BOLT, HEX, 12 x 1.75 x 80mm, 10.9, PLT
9	1	EACH	BTC10140	BOLT, HEX, 10 x 1.5 x 140mm, 10.9, PLT
8	4	EACH	BTC10110	BOLT, HEX, 10 x 1.5 x 110mm, 10.9, PLT
7	2	EACH	BTC10025	BOLT, HEX, 10 x 1.5 x 25mm, 10.9, PLT
6	4	EACH	BTC08120	BOLT, HEX, 8 x 1.25 x 120mm, 10.9, PLT
5	4	EACH	BTC08100	BOLT, HEX, 8 x 1.25 x 100mm, 10.9, PLT
4	2	EACH	BMS16023	BKT, 12.7mm SPACER PLATE
3	2	EACH	BMS16022	BKT, TM-16, SPACER PLATE
2	1	EACH	BMM60045	BKT, MAIN, WELDMT, TM-21, C2, MBE926, 07
1	1	EACH	BEL82388	BELT, 8 GR, 2388mm (94") (5080940)

BILL OF MATERIAL

REV	ECN	DESCRIPTION	DATE	BY	APPROVED	DRAWN	CHECKED	DATE
3		ADDED BELT NOTE & COMP ID	3/19/2009	VAL		WAK		8/27/2007
2		WAS SCD09510, BTC10110	1/19/2007	VAL				
1		ADDED BMS16023 SPACERS	7/5/2007	BRAR		James Stewart		6/27/2007
		RELEASED TO PRODUCTION	6/27/2007	BRAR		James Stewart		6/27/2007
				WFG		Ron Ingram		6/27/2007
						Dale Mason		6/27/2007

TRANSARGTIC INC.

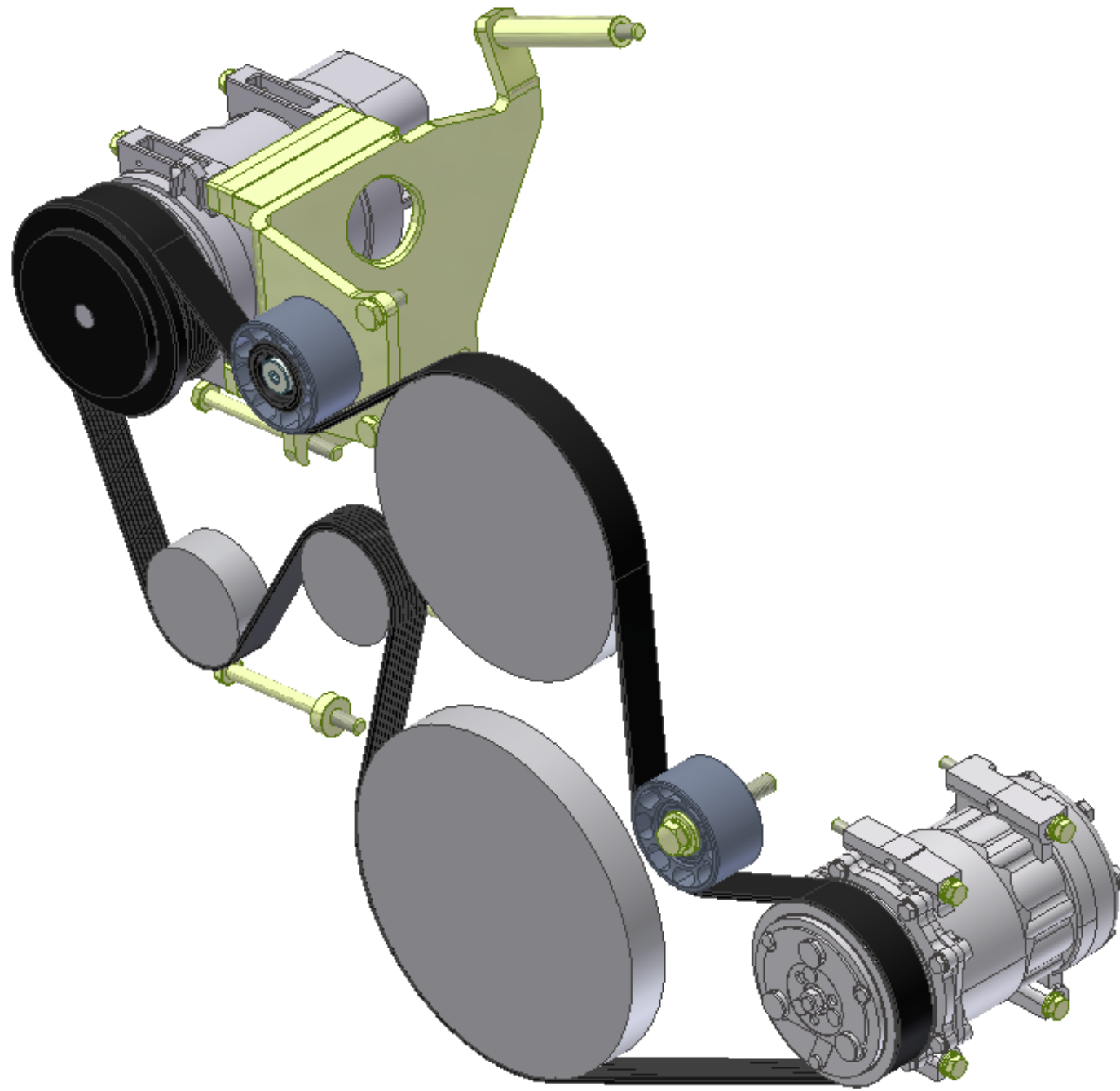
MT kit, 7.2L MBE926, TH C2, TM-21/TM-16, '07

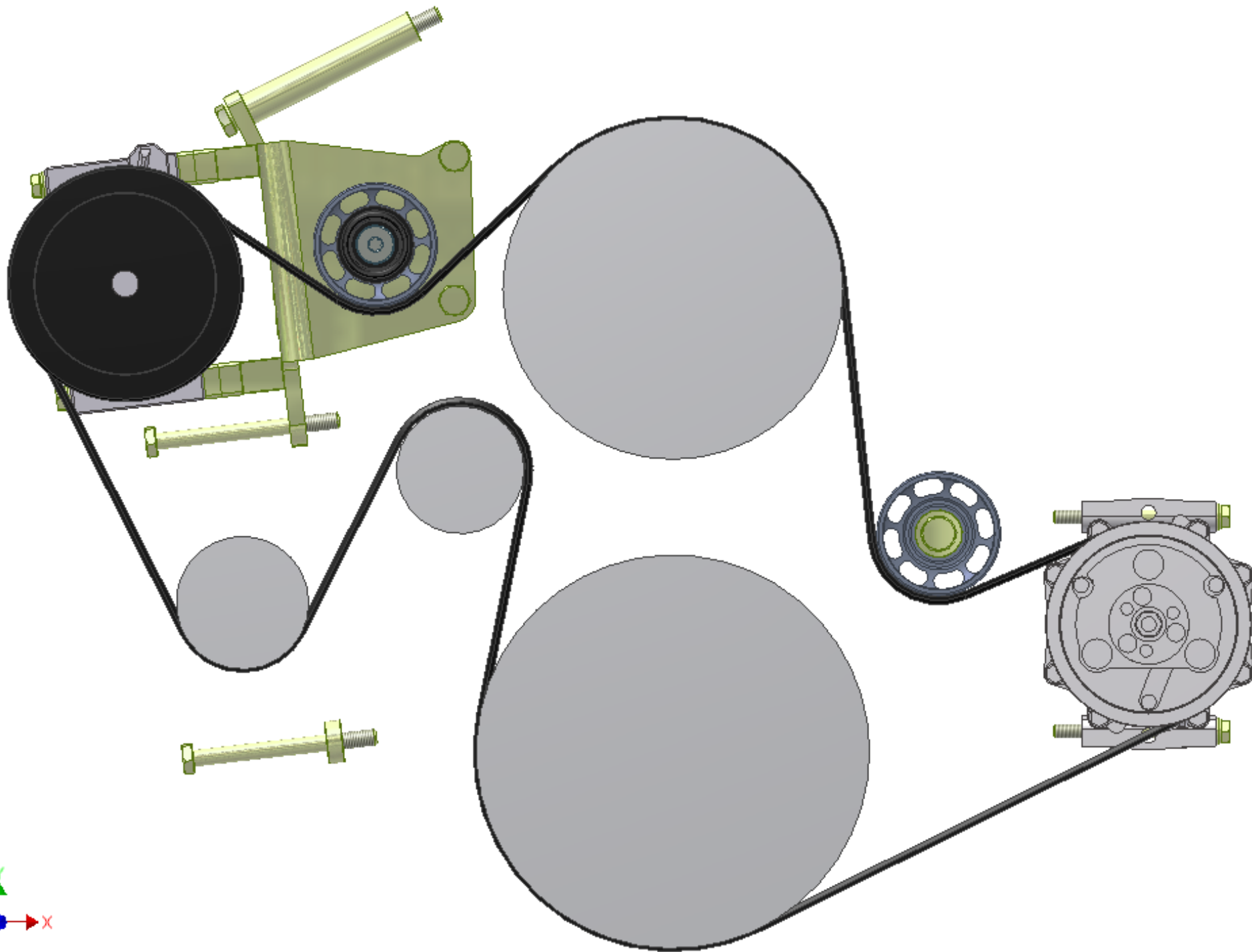
SIZE: D
 DWG NO: KMM62300
 SCALE: 1:4
 REV: 3
 SHEET: 1 OF 1

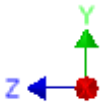
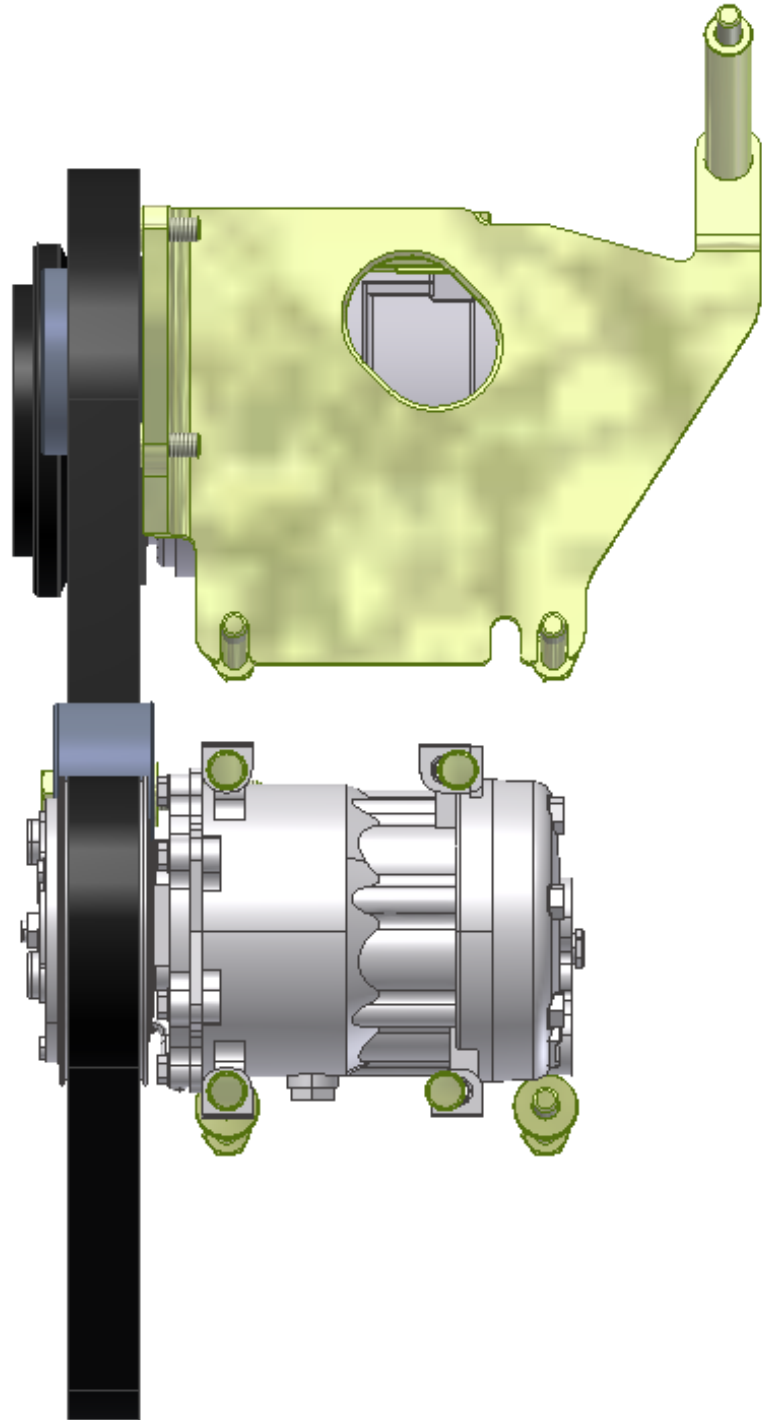
UNSPECIFIED TOLERANCES: (ALL DIM)
 ONE DECIMAL PLACE (10) AS SHOWN
 FRACTIONAL: 1/32, 1/16, 3/32, 1/8, 3/16, 1/4, 3/8, 1/2, 5/8, 3/4, 7/8, 1

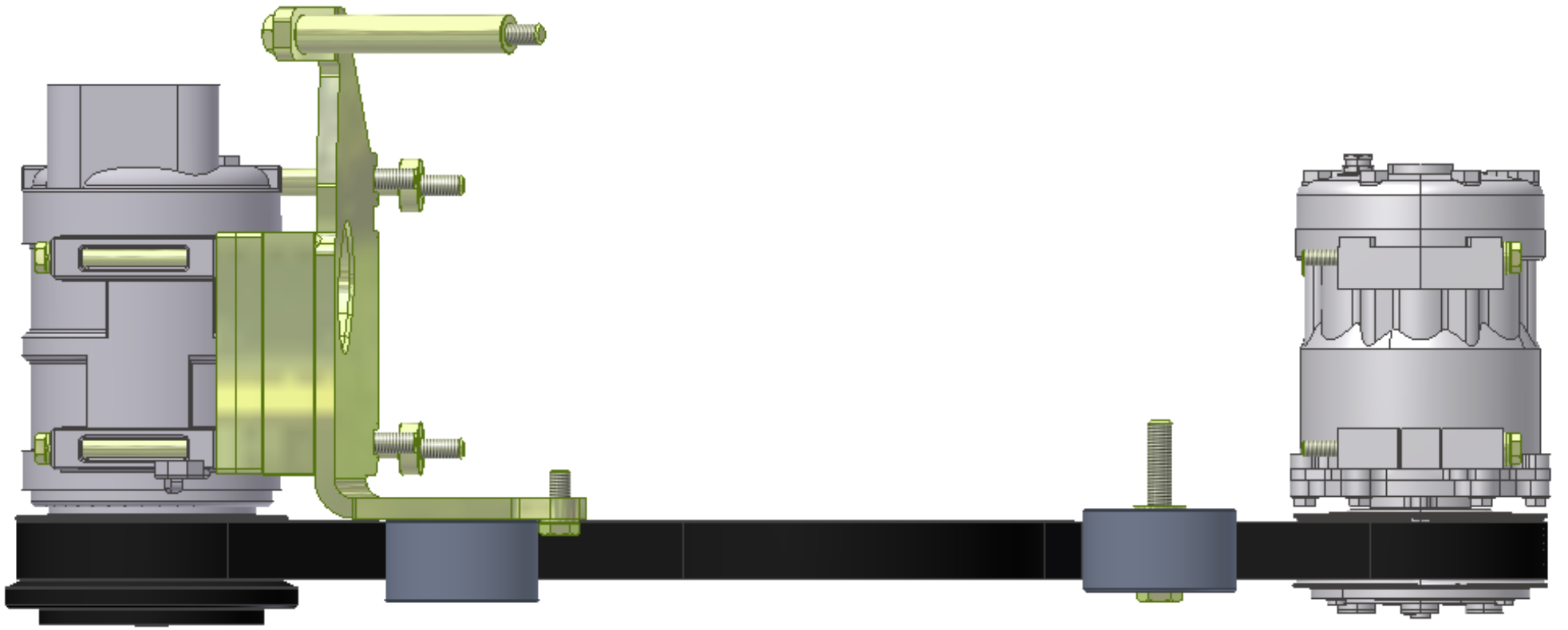


THIRD ANGLE PROJECTION
 DRAWING UNIT OF MEASURE: MM (INCH)









TransArctic A/C Compressor Mount Installation Disclaimer

All compressor mounts should be installed by qualified and trained personnel using proper tools and equipment in safe working conditions following industry standard guidelines for motor vehicle service and repair.

The installer of any compressor mount purchased from TransArctic must undertake all responsibility of issues arising from that compressor bracket being installed on any vehicle. As well as insure that a **proper and sufficient ground** is established between the compressors' clutches and the vehicle's engine. Mount functionality, operation and durability can all be compromised by an incompetent installation.

Due to the many different situations, parameters and application criteria, which are beyond the compressor mount manufacturer's control, TransArctic does not warrant design, durability, or operational functionality of any compressor mount improperly installed by another party.

With no implied guarantees it is the mount installer's strict responsibility to determine safety and functionality, of the compressor mount, at the time of installation.

Please contact TransArctic with any issue arising from installation so we may better improve the product. If you have any reservations about the compressor mount integrity contact TransArctic immediately at 1-877-COLD-AIR.