

Bill of Materials Listing

TransArctic Canada Inc.

5/8/2009
Page 1 of 1

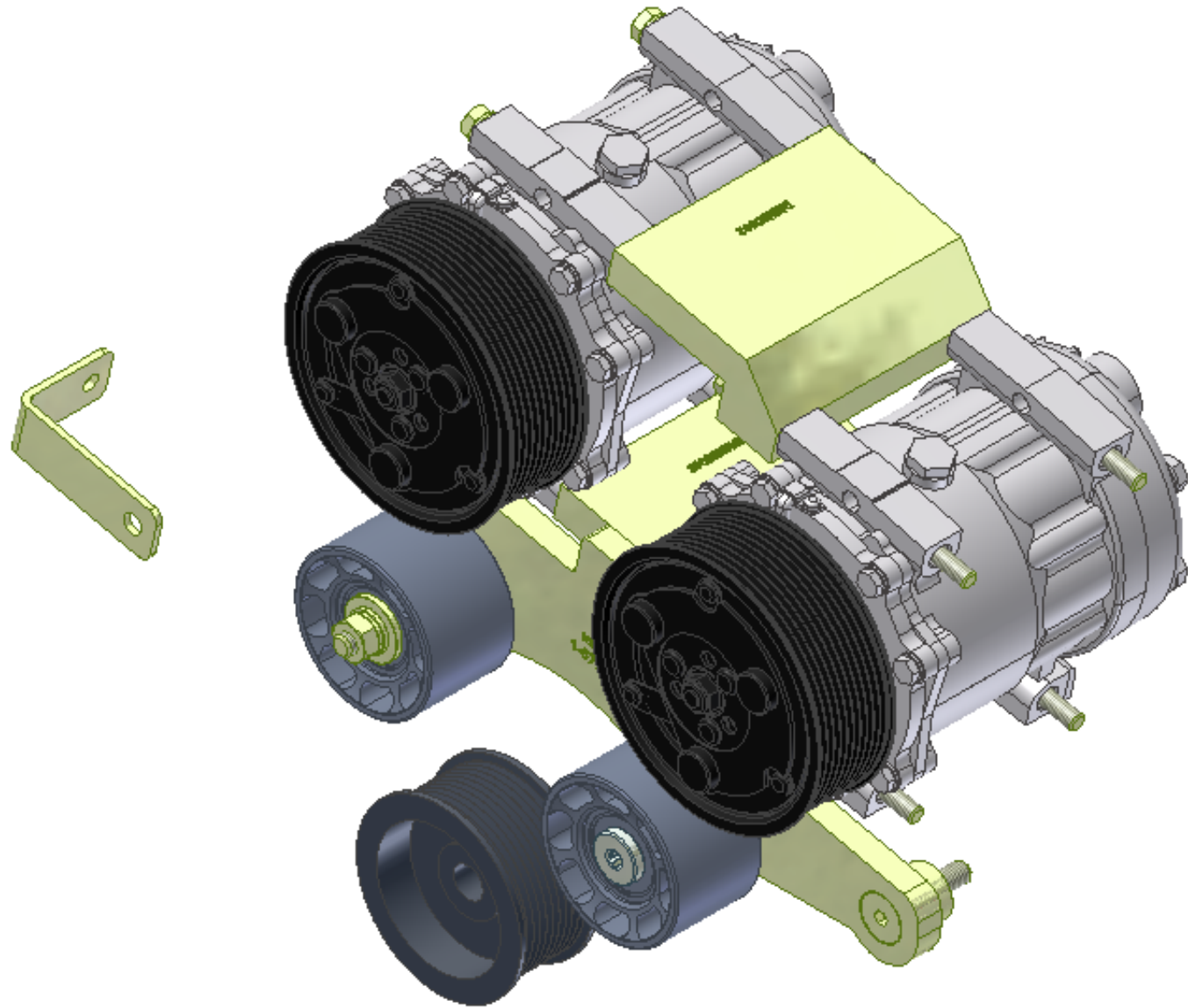
Product Number	Description	Date	Weight	Uof M	Yield
Line Component Prod#	Description	Bin Unit	Qty		
KMN82073	Mt. Kit, MForce DT, CE300, 2 TM-16, 08		11/17/2008	11.73	0
10 BEL02615	Belt, 10gr, 2615mm (103")		each	1	
20 BMN80038	Bkt, Rad Hose, PMax DT, CE300		each	1	
30 BMN80062	Bkt, Comp, Bar, Upper, CE300, '08		each	1	
40 BMN80063	Bkt, Comp, Bar, Lower, CE300, '08		each	1	
50 BMN80064	Bkt, Idler, Slot PL, Weldmnt, CE300, '08		each	1	
60 PUL80074	Pulley, Idler, B/S, Wide, 76d (89102)		each	2	
70 SCD14010	Spacer, Col, Drl, 14mm x25.4o x10.32i		each	1	
80 SLV17010	Sleeve, Pulley, 16.9o x 22.23mm x 10.32i		each	1	
90 SCD20010	Spacer, Col, Drl, 20mm x 33.34o x 10.32i		each	1	
100 CLP20040	Clamp, "P" type, #40, 1/2"w, 2 1/2", PC		each	1	
110 CLP36001	Clamp, Gear, #36,1 13/16-2 3/4 (46/70mm)		each	2	
120 KBN82673	Bag Kit, Fasteners, KMN82673/2073		each	1	

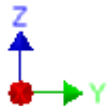
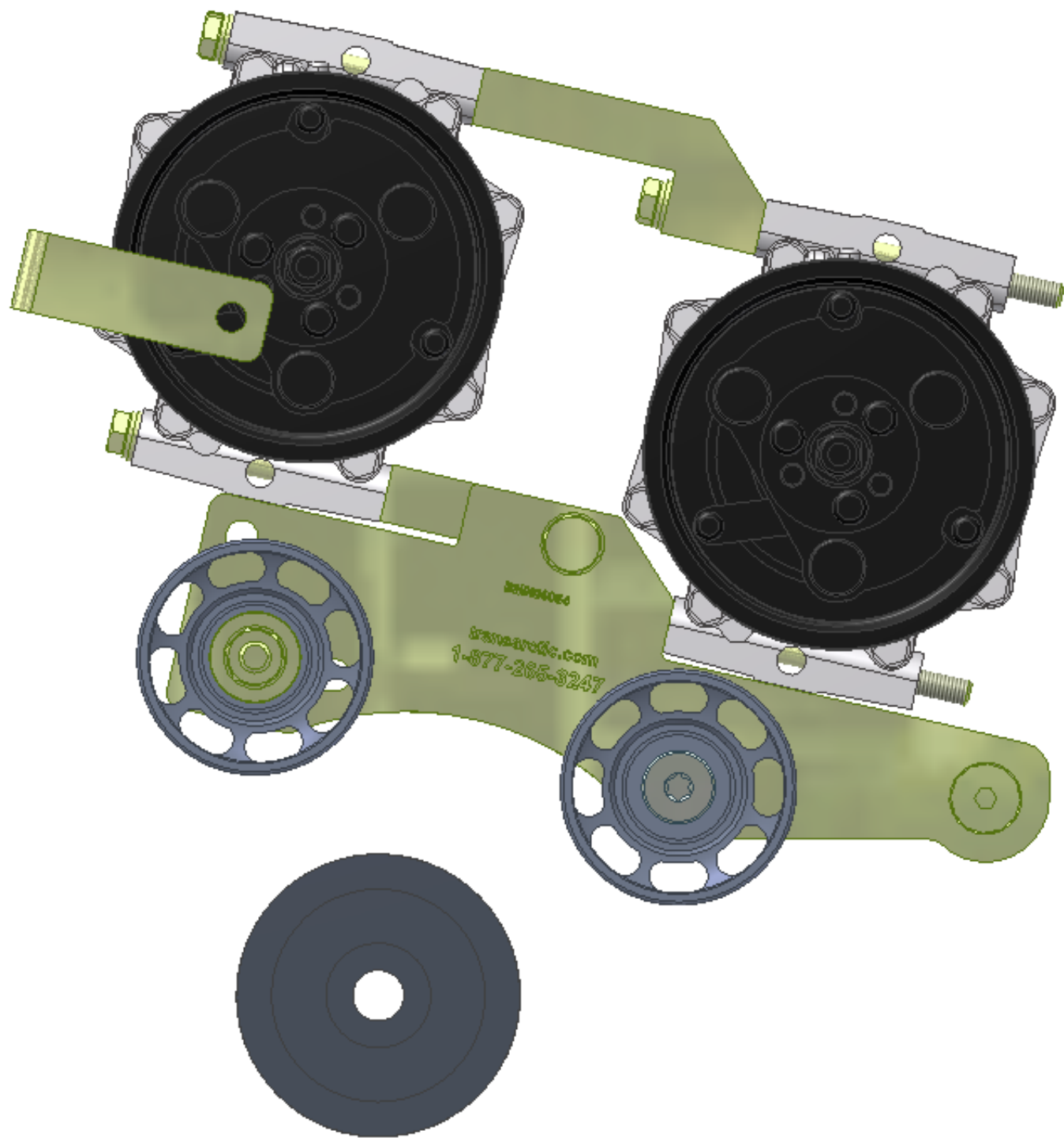
Bill of Materials Listing

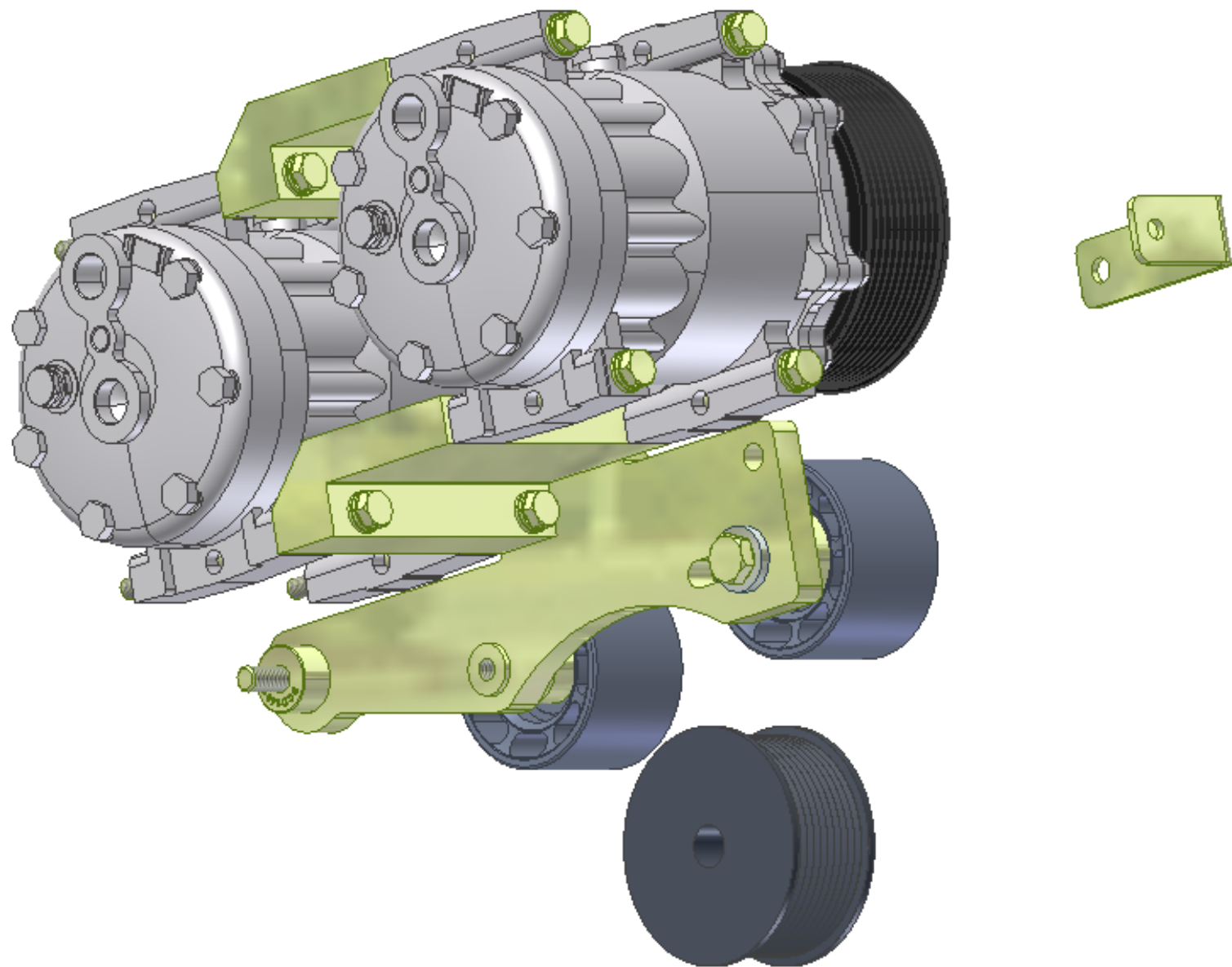
TransArctic Canada Inc.

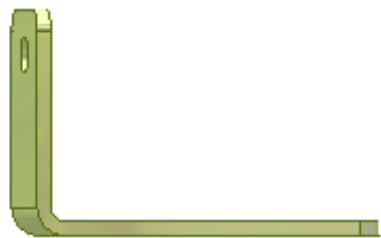
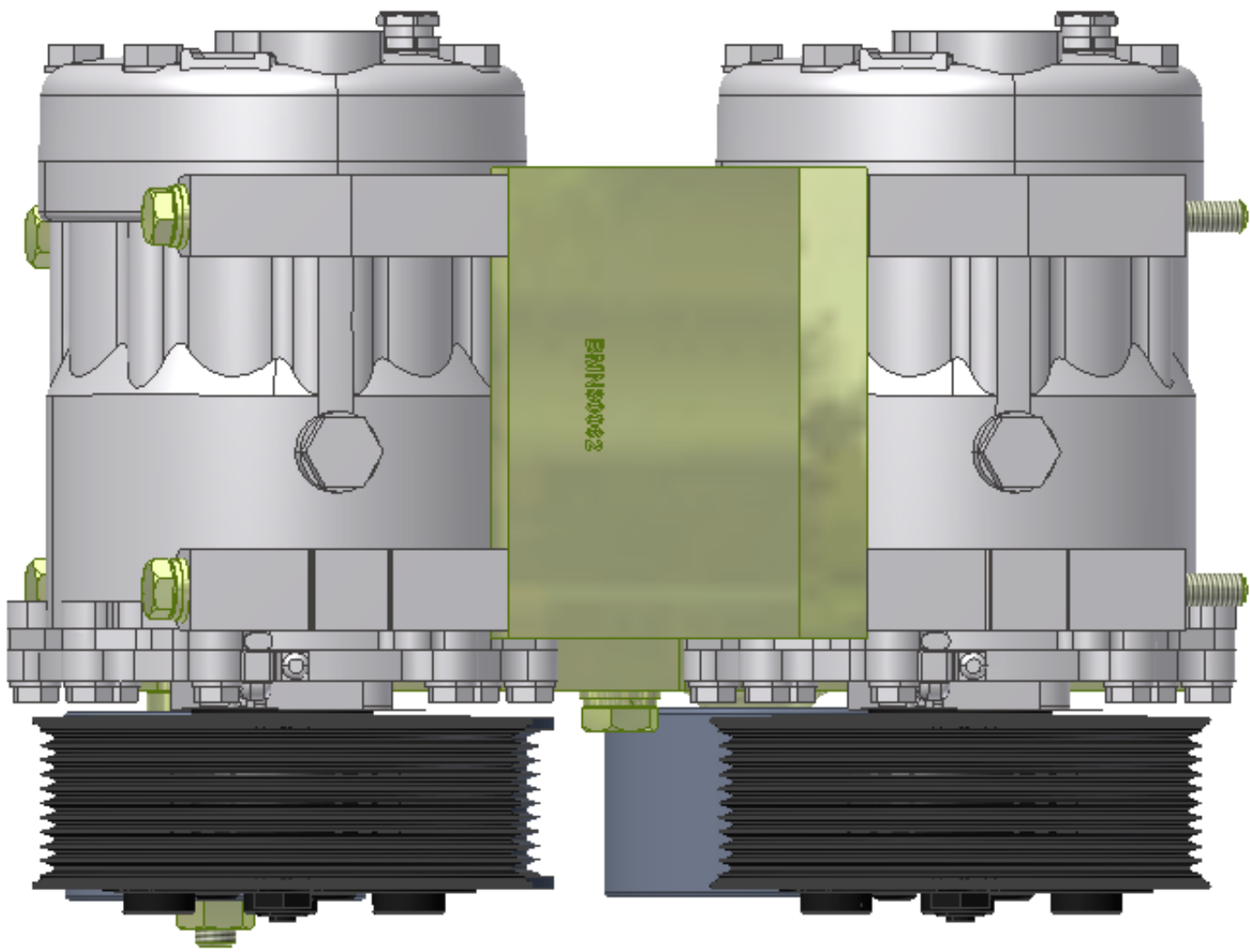
5/8/2009
Page 1 of 1

Product Number	Description	Date	Weight	Uof M	Yield
Line Component Prod#	Description	Bin Unit	Qty		
KBN82673	Bag Kit, Fasteners, KMN82673/2073		11/17/2008	1.36	0
10 CSF10046	Capscrew, FH, 10 x 1.5 x 45mm, 10.9,Plt	each	1		
20 BTS10001	Bolt, Shoulder, 10mm (89064)	each	1		
30 BTC10080	Bolt, Hex, 10 x 1.5 x 80mm, 10.9, Plt,FT	each	1		
40 BTC10040	Bolt, Hex, 10 x 1.5 x 40mm, 10.9, Plt,FT	each	1		
50 BTC08130	Bolt, Hex, 8 x 1.25 x 130mm, 10.9, Plt	each	4		
60 BTC08100	Bolt, Hex, 8 x 1.25 x 100mm, 10.9, Plt	each	4		
65 BTP04075	Bolt, Hex, 1/4-20unc, .75", 5, Plt	each	1		
70 NTA10000	Nut, Hex, 10 x 1.5, 8.8, Plt	each	1		
75 NTA08000	Nut, Hex, 8 x 1.25, 8.8, Plt	each	1		
78 NTP04000	Nut, Hex, 1/4-20unc, 5, Plt	each	1		
90 WFA10002	Washer, Flat, 10mm, Hvy, 8.8, Plt	each	1		
100 WFA10000	Washer, Flat, 10mm, 8.8, Plt	each	2		
110 WFA08000	Washer, Flat, 8mm, 8.8, Plt	each	8		
115 WFS04003	Washer, Flat, 1/4", 2, USS, Plt	each	1		
120 WLA10000	Washer, Lock, 10mm, 8.8, Plt	each	2		
130 WLA08000	Washer, Lock, 8mm, 8.8, Plt	each	9		









TransArctic A/C Compressor Mount Installation Disclaimer

All compressor mounts should be installed by qualified and trained personnel using proper tools and equipment in safe working conditions following industry standard guidelines for motor vehicle service and repair.

The installer of any compressor mount purchased from TransArctic must undertake all responsibility of issues arising from that compressor bracket being installed on any vehicle. As well as insure that a **proper and sufficient ground** is established between the compressors' clutches and the vehicle's engine. Mount functionality, operation and durability can all be compromised by an incompetent installation.

Due to the many different situations, parameters and application criteria, which are beyond the compressor mount manufacturer's control, TransArctic does not warrant design, durability, or operational functionality of any compressor mount improperly installed by another party.

With no implied guarantees it is the mount installer's strict responsibility to determine safety and functionality, of the compressor mount, at the time of installation.

Please contact TransArctic with any issue arising from installation so we may better improve the product. If you have any reservations about the compressor mount integrity contact TransArctic immediately at 1-877-COLD-AIR.