

Bill of Materials Listing

TransArctic Canada Inc.

10/21/2021
Page 1 of 1

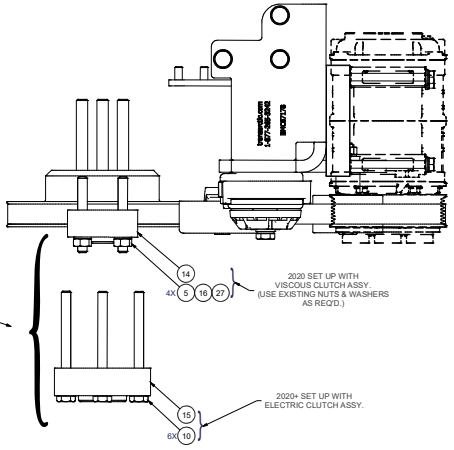
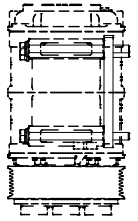
Product Number	Date	Description	Uof M	Weight	Yield		
Line	Qty	Component Prod#	Rev#	Description	Bin	Unit	
KMC62002	3/4/2008	0 Mt Kit, ISB, C2, , 2 TM-16 new '20				71.04	0
5	1	PAC15110		Pack, Carton, 15" x 11" x 10", 51 ECT		each	
10	1	BEL61397		Belt, 6gr, 1397mm (55.0") (5060550)		each	
20	1	BMC67178	0	Bkt, Weldm't, ISB, 6.7L, C2, '20		each	
25	1	BMC67151	0	Bkt, Weldm't, ISB, 6.7L, Support Arm		each	
27	2	BMS16022	3	Bkt, TM-16 Spacer Plate, .38"	Alley	each	
30	1	PUL67006	0	Pulley, Crank, ADD-ON, Cum, ISB, 6.7, P6		each	
40	1	PUL80076		Pulley, Idler, Backside, P8, 74d (89101)		each	
50	1	FSP59286	0	Spacer, Fan, Pulley, ISB, 28.6mm (1.13")	Alley	each	
55	1	FSP62905	0	Spacer, Fan, Pulley, ISB, 29.05mm(1.14")		each	
60	1	SLV17010	1	Sleeve, Pulley, 16.9o x 22.23mm x 10.32i		each	
70	1	SCD32010	0	Spacer, Col, Drl, 32.0mm x 25.4o x 10.3i		each	
80	1	TEN80005		Tenr, HD Spring, BackSide, CCW (89430)		each	
90	1	KBC62002	0	Bag Kit, Fasteners, KMC62002		Each	

Bill of Materials Listing

TransArctic Canada Inc.

10/21/2021
Page 1 of 1

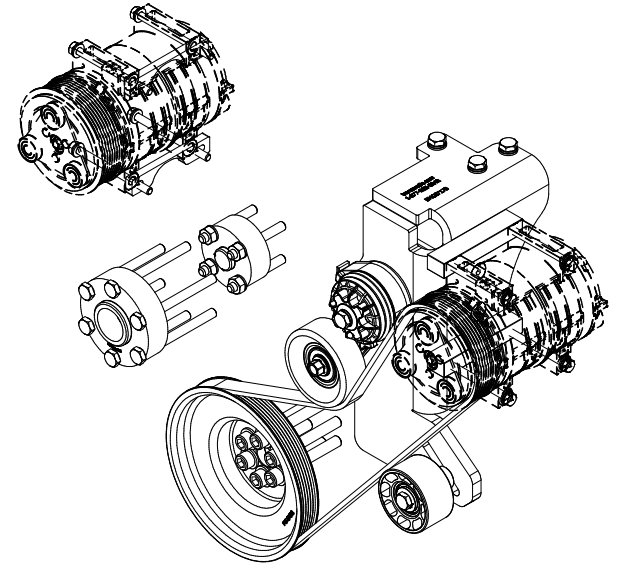
Product Number	Date	Description		Uof M	Weight	Yield		
Line	Qty	Component	Prod#	Rev#	Description	Bin	Unit	
KBC62002	2/17/2016	0	Bag Kit, Fasteners, KMC62002				4.07	0
5	4	BSD00001			Bolt, Stud, M10 x 1.5 x 80mm, 8.8, Plt		each	
10	4	BTC08100			Bolt, Hex, 8 x 1.25 x 100mm, 10.9, Plt		each	
15	4	BTC08110			Bolt, Hex, 8 x 1.25 x 110mm, 10.9, Plt		each	
20	3	BTC10035			Bolt, Hex, 10 x 1.5 x 35mm, 10.9, Plt,FT		each	
40	2	BTC10090			Bolt, Hex, 10 x 1.5 x 90mm, 10.9, Plt		each	
50	6	BTC10110			Bolt, Hex, 10 x 1.5 x 110mm, 10.9, Plt		each	
51	2	CSF08021			Capscrew, FH, 8 x 1.25 x 20mm, 10.9,Plt		each	
52	2	CSF10031			Capscrew, FH, 10 x 1.5 x 30mm, 10.9,Plt		each	
60	6	CSS12090			Capscrew, SH, 12 x 1.25 x 90mm, 12.9,BLK		each	
65	5	NTA10000			Nut, Hex, 10 x 1.5, 8.8, Plt		each	
70	8	WLA08000			Washer, Lock, 8mm, 8.8, Plt		each	
80	9	WLA10000			Washer, Lock, 10mm, 8.8, Plt		each	
90	8	WFA08000			Washer, Flat, 8mm, 8.8, Plt		each	
100	4	WFA10000			Washer, Flat, 10mm, 8.8, Plt		each	
105	1	WFA10002			Washer, Flat, 10mm, Hvy, 8.8, Plt		each	
110	6	WFS12002		0	Washer, Flat, Hdn, 12mm, Stl, BLK		each	



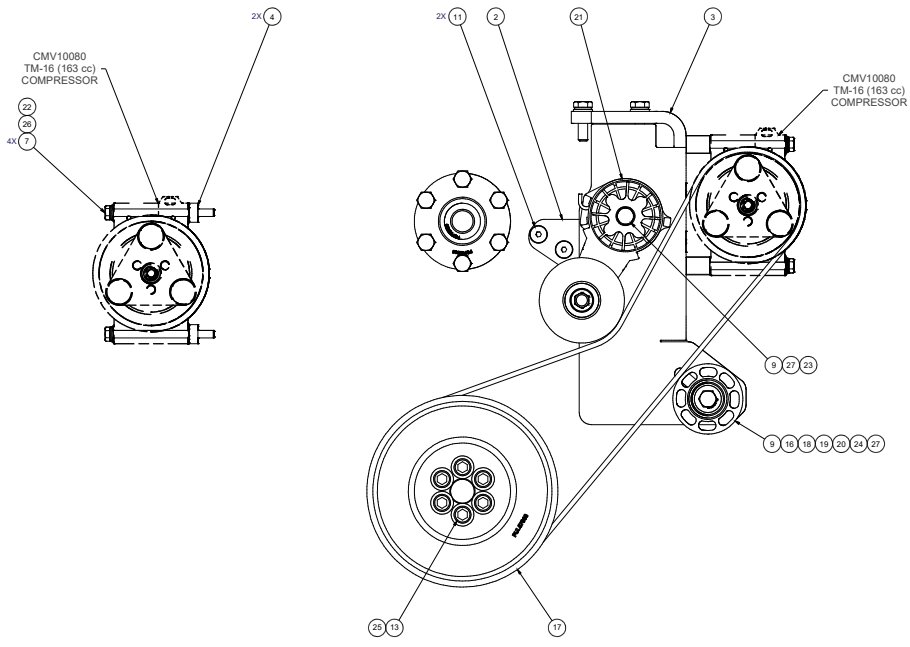
NOTE:
USE THE APPROPRIATE "FAN SPACER
& FASTENERS" SET-UP TO SUIT YOUR INSTALL.

2020 SET UP WITH
VISCIOUS CLUTCH ASSY
(USE EXISTING NUTS & WASHERS
AS REQ'D.)

2020+ SET UP WITH
ELECTRIC CLUTCH ASSY.



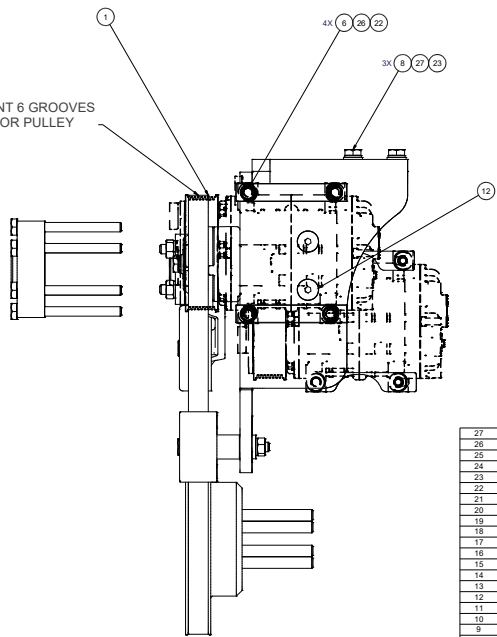
ISOMETRIC VIEW



CMV10080
TM-16 (163 cc)
COMPRESSOR

CMV10080
TM-16 (163 cc)
COMPRESSOR

BELT SITS IN FRONT 6 GROOVES
OF COMPRESSOR PULLEY



ITEM	QTY	U/M	PART NUMBER	DESCRIPTION
27	9	EACH	WLA10000	WASHER LOCK, 10mm, 8.8, PLT
26	8	EACH	WLA80000	WASHER LOCK, 8mm, 8.8, PLT
25	6	EACH	WFS12002	WASHER, FLAT, HDN, 12mm, STL, BLK
24	1	EACH	WFA10000	WASHER FLAT, 10mm, HWY, 8.8, PLT
23	4	EACH	WFA10000	WASHER FLAT, 10mm, 8.8, PLT
22	8	EACH	WFA80000	WASHER FLAT, 8mm, 8.8, PLT
21	1	EACH	TENR9005	TENN, HD SPRING, BACKSIDE, COWI (86450)
20	1	EACH	SLV11010	SLEEVE, PULLEY, 18.50 x 22.23mm x 10.32
19	1	EACH	SCD32010	SPACER, COL, DRL, 32.02mm x 25.40 x 10.31
18	1	EACH	PUL60016	PULLEY, OLER, BACKSIDE, PG, 760, SWW
17	1	EACH	PUL61006	PULLEY CRANK, ADD-ON, CHM, ISB, 6.7, PG
16	5	EACH	NTA10000	NUT, HEX, 10 x 1.5, 8.8, PLT
15	1	EACH	FSPR2905	SPACER, FAN, PULLEY, ISB, 29.05mm (1.14")
14	1	EACH	FSPR2906	SPACER, FAN, PULLEY, ISC, 29.6mm (1.13")
13	6	EACH	CS112050	CAPSCREW, SH, 12 x 1.25 x 90mm, 12.9, PLT
12	2	EACH	CSF10031	CAPSCREW, FH, 10 x 1.5 x 30mm, 10.9, PLT
11	2	EACH	CSF8021	CAPSCREW, FH, 8 x 1.25 x 20mm, 10.9, PLT
10	6	EACH	BTC10110	BOLT, HEX, 10 x 1.5 x 110mm, 10.9, PLT
9	2	EACH	BTC10090	BOLT, HEX, 10 x 1.5 x 90mm, 10.9, PLT
8	3	EACH	BTC10035	BOLT, HEX, 10 x 1.5 x 35mm, 10.9, PLT
7	4	EACH	BTC08110	BOLT, HEX, 8 x 1.25 x 110mm, 10.9, PLT
6	4	EACH	BTC08100	BOLT, HEX, 8 x 1.25 x 100mm, 10.9, PLT
5	4	EACH	BSS00001	BOLT, STD, M10 x 1.5 x 80mm, 8.8, PLT
4	2	EACH	BMS16022	BKT, TM-16, SPACER PLATE
3	1	EACH	BMCR7176	BKT, WELDMT, ISB, 6.7L, G2, 20
2	1	EACH	BMCR1151	BKT, WELDMT, ISB, 6.7L, SUPPORT ARM
1	1	EACH	BEL11997	Belt, Sp, 1.987mm (55.0") (5060250)

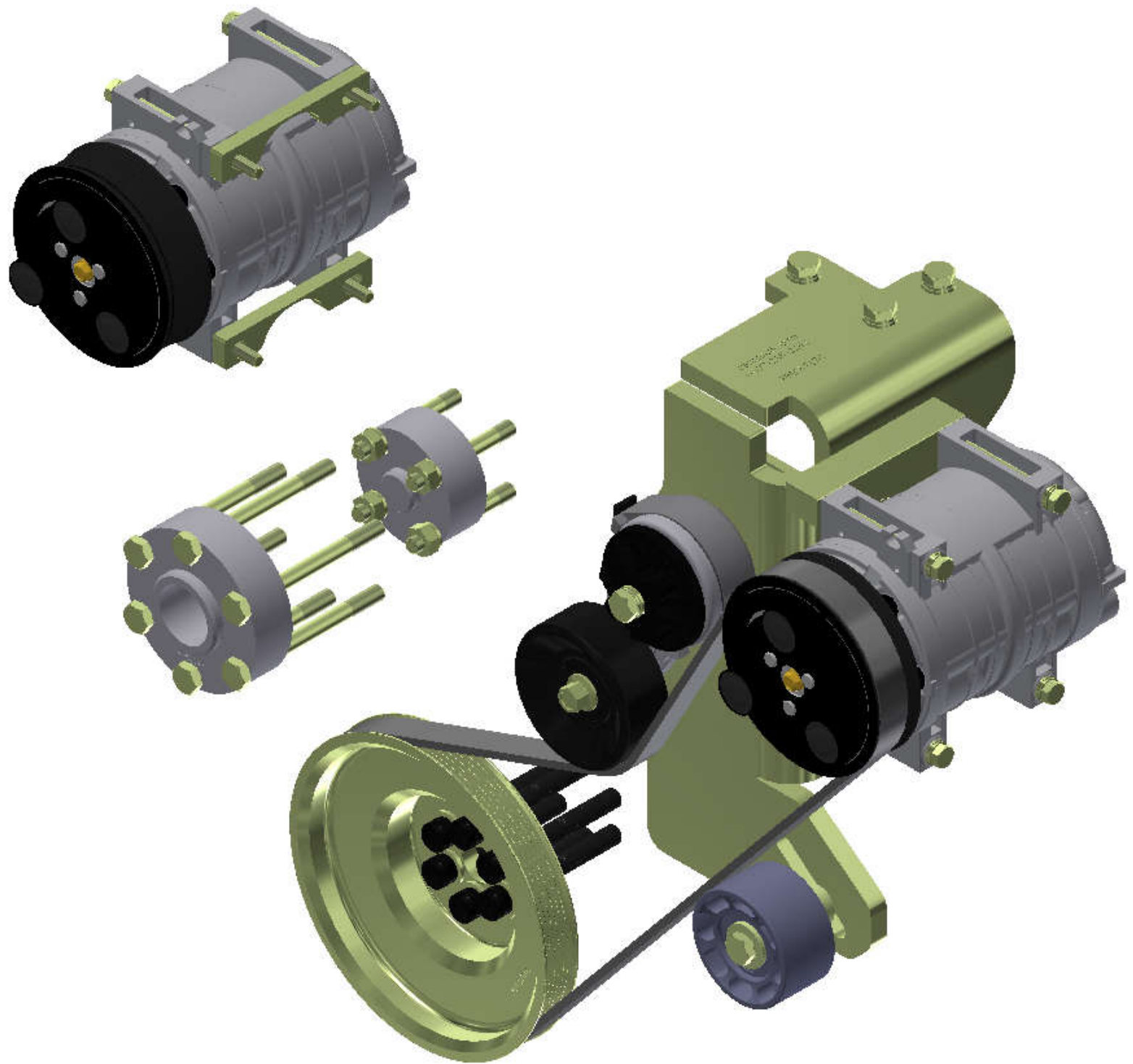
DRAWN: jakowlew DATE: 10/21/2021
 CHECKED: Jose Rodriguez DATE: 10/21/2021
 RELEASED TO PRODUCTION: 10/20/2021
 DATE: 10/20/2021
 BY: James Stewart
 APPROVED: DALE MASON DATE: 10/21/2021
 TITLE: **Mt Kit, ISB, C2, 2 TM-16, 20**

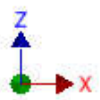
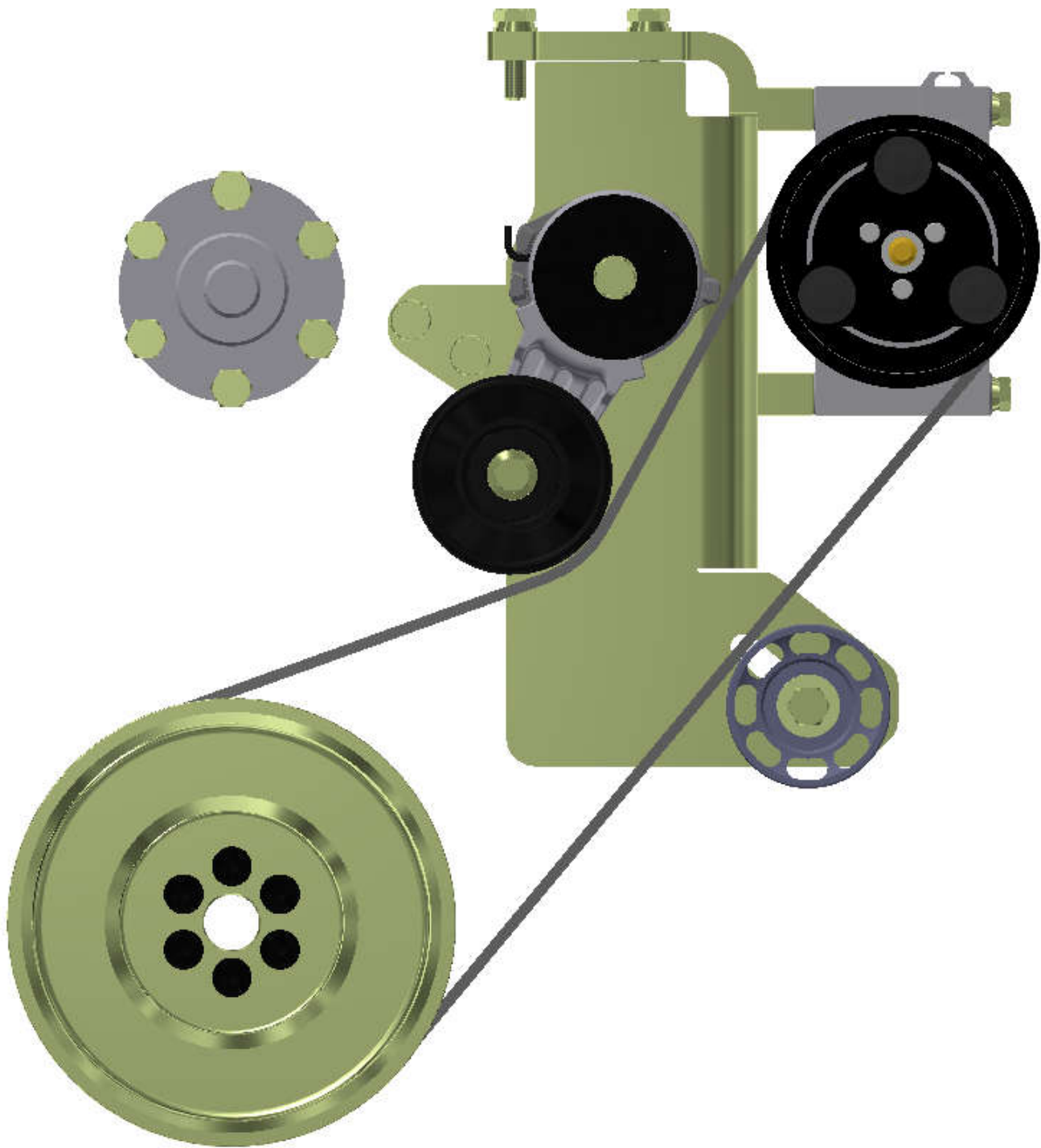
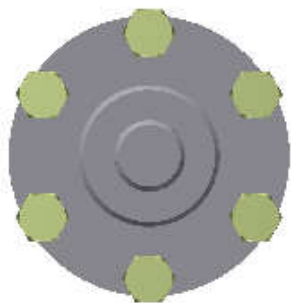
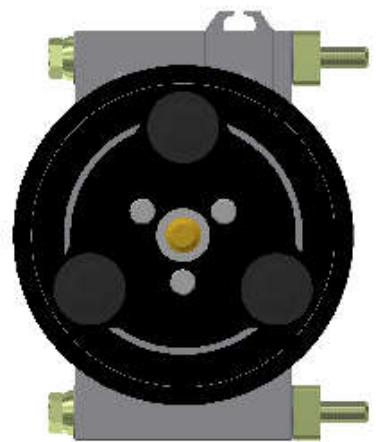
THIS DRAWING CONTAINS PROPRIETARY AND/OR CONFIDENTIAL INFORMATION.
 IT IS TO BE KEPT PRIVATE AND NOT TO BE REPRODUCED OR TRANSMITTED IN ANY FORM OR BY ANY MEANS, ELECTRONIC OR MECHANICAL, WITHOUT EXPRESS WRITTEN PERMISSION OF THE COMPANY.

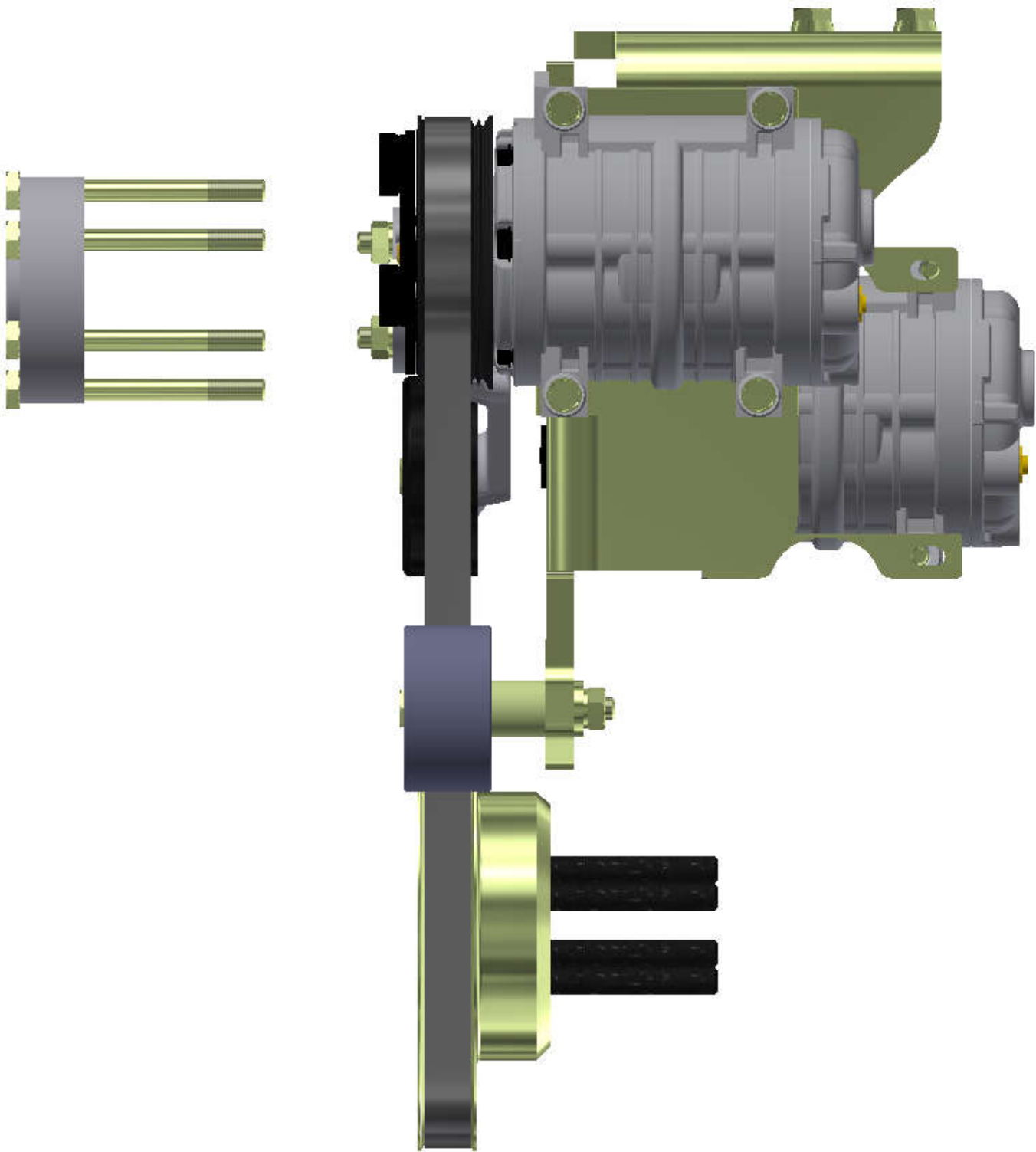
TRANSARCTIC INC. 10000 W. 100th Ave. Denver, CO 80231
 PHONE: (303) 440-1000 FAX: (303) 440-1001
 WWW.TRANSARCTIC.COM

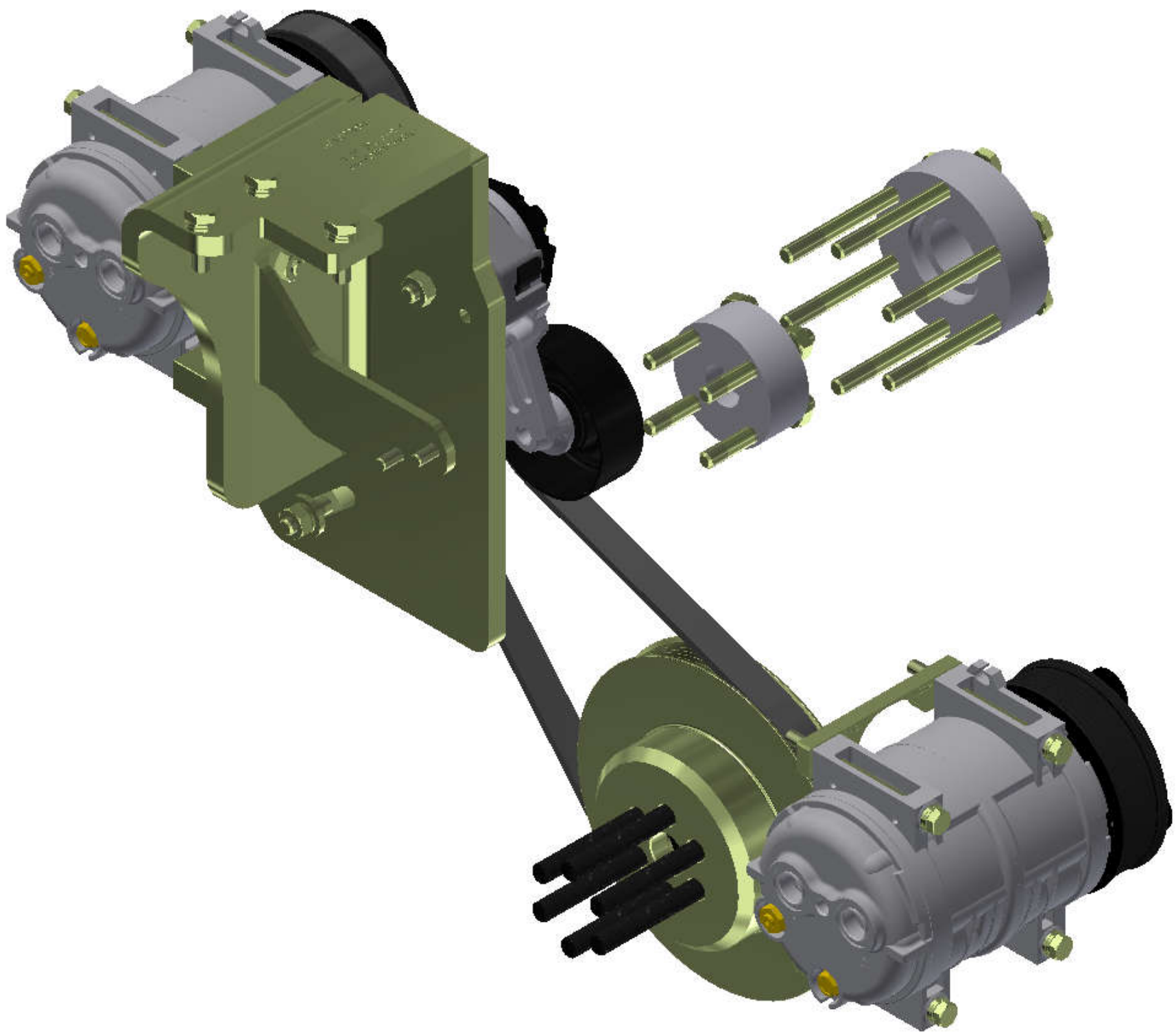
SHEET 1 OF 1
 SCALE: 1:1
 DATE: 10/21/2021

NOTES:
 1) USE SERVICABLE THREADLOCKER ON ALL FASTENERS TO ENGINE COMPONENTS AND TORQUE ALL BOLTS TO S.A.E. SPECIFICATIONS.
 2) SEE "TRANSARCTIC A/C COMPRESSOR MOUNT INSTALLATION DISCLAIMER"









TransArctic A/C Compressor Mount Installation Disclaimer

All compressor mounts should be installed by qualified and trained personnel using proper tools and equipment in safe working conditions following industry standard guidelines for motor vehicle service and repair.

The installer of any compressor mount purchased from TransArctic must undertake all responsibility of issues arising from that compressor bracket being installed on any vehicle. As well as insure that a **proper and sufficient ground** is established between the compressors' clutches and the vehicle's engine. Mount functionality, operation and durability can all be compromised by an incompetent installation.

Due to the many different situations, parameters and application criteria, which are beyond the compressor mount manufacturer's control, TransArctic does not warrant design, durability, or operational functionality of any compressor mount improperly installed by another party.

With no implied guarantees it is the mount installer's strict responsibility to determine safety and functionality, of the compressor mount, at the time of installation.

Please contact TransArctic with any issue arising from installation so we may better improve the product. If you have any reservations about the compressor mount integrity contact TransArctic immediately at 1-877-COLD-AIR.

Mark OEM tensioner location

Install Kit

Check for Interferences

Check to ensure that the proper OEM tensioner orientation is maintained

Run engine with A/C system engaged for at least 10 minutes to run in belt

Check OEM tensioner orientation and adjust as required

Responsabilidad limitada de TransArctic en la instalación del soporte del compresor

Todos los soportes de los compresores deben ser instalados por personas calificadas y entrenadas, usando para ello los equipos y herramientas necesarios para esta labor en buenas condiciones y según las normas y guías para el servicio y/o reparación de motores de vehículos.

El instalador de los soportes comprados en TransArctic asume toda la responsabilidad de cualquier problema que surga en el soporte del compresor al vehículo; de igual manera es responsable que el cable a tierra sea conectado entre el embrague del compresor y el motor del vehículo.

Se advierte que el buen funcionamiento y la durabilidad del soporte pueden ser comprometidos por defectos en su instalación.

Debido a las diversas situaciones que se puedan presentar fuera del control del fabricante, TransArctic no garantiza el diseño, la durabilidad o el correcto funcionamiento de cualquier equipo inapropiadamente instalado por terceros.

Esta sobreentendido que el Instalador del montaje del compresor es estrictamente responsable de la seguridad y funcionamiento del equipo en el momento de la instalación.

Si tuviera algún problema o duda acerca de la instalación del soporte del compresor pongase en contacto inmediatamente con TransArctic al teléfono 1-877-COLD-AIR de modo que podamos mejorar nuestro producto.

Note la ubicación del medidor de tensión OEM

Instale el equipo

Controlar si hay interferencias.

Asegure que el medidor de tensión mantenga la orientación justa.

Encienda el motor por lo menos 10 minutos con el sistema A/C enganchado para que la correa corra

Controle la orientación justa del medidor de tensión y ajuste a las condiciones requeridas del fabricante