

# Bill of Materials Listing

TransArctic Canada Inc.

10/7/2013  
Page 1 of 1

Product Number	Description	Date	Weight	Uof M	Yield
Line Component Prod#	Description	Bin Unit	Qty		
<b>KMC64063</b>	<b>Mt Kit, ISB13, T3RE, FK40/4xFC, '13</b>	<b>04/24/13</b>	<b>222.85</b>	<b>each</b>	<b>0</b>
5	BEL22235 Belt, B gr, 2235mm (88") (BX85)	each	2		
20	BMC67093 Bkt, Fuse Panel, Vert., ISB, T3RE	each	1		
30	BMC67094 Bkt, Diag, Brace DS, Fuse Panel, T3RE	each	1		
40	BMC67095 Bkt, Diag, Brace PS, Fuse Panel, T3RE	each	1		
50	BMC67096 Bkt, Diag Brace, DS, Frame Rail, T3RE	each	1		
60	BMC83047 Bkt, Brace, Vert, RR, Bumper, ISC, D3	each	1		
70	BMC83052 Bkt, Main, RR Plate, MFDT, RE300	each	1		
80	BMC83054 Bkt, Main, Idler, Weldm't, RE300	each	1		
90	BMC83057 Bkt, Main, Frt Pl, MFDT, RE300	each	1		
100	BMC83059 Bkt, Diag, Brace Frt, MF DT, RE300	each	1		
110	BMC83076 Bkt, Brace, CAC, D3RE, '10	each	1		
120	BMN80008 Vibration Isolator, Bar, 16.50 x 2 x 1.50	each	2		
130	BMN80009 Bkt, Main, Base Pl, IC, RE300	each	1		
140	BMN80025 Bkt, Back, PL, Slide, IC, RE300	each	1		
180	KAC64163 Kit, Alt. 24V, ISB, T3RE, '13	each	1		
190	KBT83990 Kit, Platform, 4xFCY, '12	each	1		
195	KRC67001 Kit, Retrofit, ISB, Air Filter Reloc, '13	each	1		
200	PUA05012 Pulley, Assy, Idler, B/BX gr, 5", STL, Plt	each	1		
210	PUL67323 Pulley, Crank, ADD-ON, 8.75", ISB, 2B/3V	each	1		
220	PUL80074 Pulley, Idler, B/S, Wide, 76d (89102)	each	1		
230	SCD37012 Spacer, Col, Drl, 37 mm x 25.4o x 12.3i	each	1		
240	SCD41012 Spacer, Col, Drl, 41 mm x 25.4o x 12.3i	each	1		
250	SLV17012 Sleeve, Pulley, 16.9o x 22.23mm x 12.32i	each	2		
270	KBC64063 Bag Kit, Fasteners, KMC64063	each	1		

# Bill of Materials Listing

TransArctic Canada Inc.

10/7/2013  
Page 1 of 1

Product Number		Description	Bin	Date	Weight	Uof M	Yield
Line	Component Prod#	Description		Unit	Qty		
<b>KBC64063</b>		<b>Bag Kit, Fasteners, KMC64063</b>		<b>04/24/13</b>	<b>5.01</b>	<b>each</b>	<b>0</b>
10	BTC10025	Bolt, Hex, 10 x 1.5 x 25mm, 10.9, Plt		each	2		
20	BTC10040	Bolt, Hex, 10 x 1.5 x 40mm, 10.9, Plt,FT		each	5		
30	BTC12035	Bolt, Hex, 12 x 1.75 x 35mm, 10.9,Plt,FT		each	1		
40	BTC12040	Bolt, Hex, 12 x 1.75 x 40mm, 10.9,Plt,FT		each	4		
50	BTC12050	Bolt, Hex, 12 x 1.75 x 50mm, 10.9,Plt		each	2		
60	BTC12100	Bolt, Hex, 12 x 1.75 x 100mm, 10.9, Plt		each	2		
70	BTP08653	Bolt, Hex, 1/2-13unc, 6.5", 5, Plt, FT		each	1		
80	BTQ08126	Bolt, Hex, 1/2-20unf, 1.25", 8, Plt		each	10		
90	BTQ08151	Bolt, Hex, 1/2-20unf, 1.5", 8, Plt		each	2		
100	BTS06400	Bolt, U, 3/8-16, 4.00 W/IS, Nut/PI, PLT		each	1		
110	NTA10000	Nut, Hex, 10 x 1.5, 8.8, Plt		each	2		
120	NTA12000	Nut, Hex, 12 x 1.75, 8.8, Plt		each	9		
130	WFA10000	Washer, Flat, 10mm, 8.8, Plt		each	9		
140	WFA12000	Washer, Flat, 12mm, 8.8, Plt		each	16		
150	WFQ08000	Washer, Flat, 1/2", 8, Plt		each	12		
160	WLA10000	Washer, Lock, 10mm, 8.8, Plt		each	7		
170	WLA12000	Washer, Lock, 12mm, 8.8, Plt		each	9		
180	WLP08000	Washer, Lock, 1/2", 5, Plt		each	13		

# Bill of Materials Listing

TransArctic Canada Inc.

10/2/2013

Page 1 of 1

Product Number		Description	Bin	Date	Weight	Uof M	Yield
Line	Component	Prod#	Description	Unit	Qty		
<b>KAC64163</b>			<b>Kit, Alt. 24V, ISB, T3RE, '13</b>		<b>02/15/13</b>	<b>36.89</b>	<b>0</b>
5	BEL81080		Belt, 8gr, 1080mm (42.5") (5080425)	each	1		
10	BMC67097		Bkt, Main, Alt, Weldmt, ISB, T3RE,'13	each	1		
20	BMC67100		Bkt, Spacer, 6.7L, ISB, T3RE, '13	each	1		
30	BMC67101		BKT, Tenr Arm, Alt, T3RE, '13	each	1		
40	BMC67102		Bkt, Spacer, Bar, ISB, T3RE, '13	each	1		
45	BMC67103		Bkt, Diag, Brace, Tenr, ISB, T3RE, '13	each	1		
50	PUL80064		Pulley,ALT,Frontside,P8,63.5d (3972808)	each	1		
60	PUL83008		Pulley, Fan, Add-on, Cum, ISC, 8.3, 8gr	each	1		
70	TEN80005		Tenr, HD Spring, BackSide, CCW (89430)	each	1		
80	KBA64163		Bag Kit, Fasteners, KAC64163	each	1		

# Bill of Materials Listing

TransArctic Canada Inc.

10/2/2013  
Page 1 of 1

Product Number		Description	Bin	Date	Weight	Uof M	Yield
Line	Component Prod#	Description		Unit	Qty		
<b>KBA64163</b>		<b>Bag Kit, Fasteners, KAC64163</b>		<b>02/26/13</b>	<b>1.90</b>		<b>0</b>
10	BTC08015	Bolt, Hex, 8 x 1.25 x 15mm, 10.9, Plt		each	1		
20	BTC08035	Bolt, Hex, 8 x 1.25 x 35mm, 10.9, Plt,FT		each	1		
30	BTC10030	Bolt, Hex, 10 x 1.5 x 30mm, 10.9, Plt		each	1		
40	BTC10060	Bolt, Hex, 10 x 1.5 x 60mm, 10.9, Plt		each	1		
50	BTC10070	Bolt, Hex, 10 x 1.5 x 70mm, 10.9, Plt		each	2		
60	BTC10080	Bolt, Hex, 10 x 1.5 x 80mm, 10.9, Plt,FT		each	1		
70	BTQ08150	Bolt, Hex, 1/2-13unc, 1.5", 8, Plt		each	4		
80	BTQ08653	Bolt, Hex, 1/2-13unc, 6.5", 8, Plt		each	1		
90	CSF08031	Capscrew, FH, 8 x 1.25 x 30mm, 10.9,Plt		each	1		
110	NTQ08000	Nut, Hex, 1/2-13unc, 8, Plt		each	3		
120	WFA08000	Washer, Flat, 8mm, 8.8, Plt		each	2		
130	WFA10000	Washer, Flat, 10mm, 8.8, Plt		each	5		
140	WFQ08000	Washer, Flat, 1/2", 8, Plt		each	8		
150	WLA08000	Washer, Lock, 8mm, 8.8, Plt		each	2		
160	WLA10000	Washer, Lock, 10mm, 8.8, Plt		each	5		
180	WLQ08000	Washer, Lock, 1/2", 8, Plt		each	5		

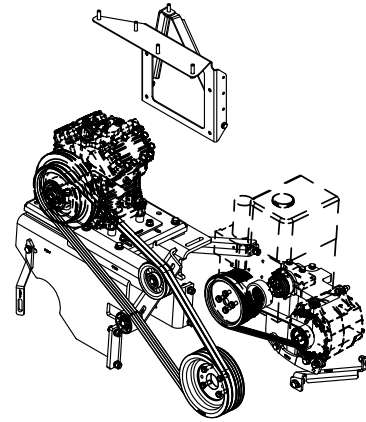
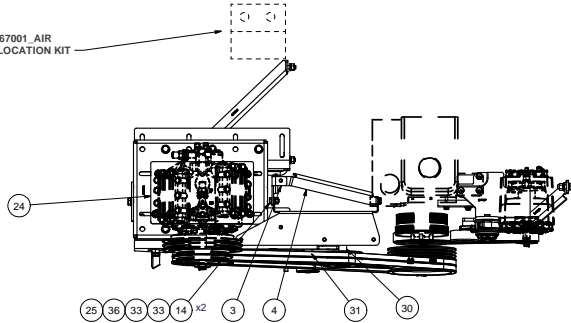
# Bill of Materials Listing

TransArctic Canada Inc.

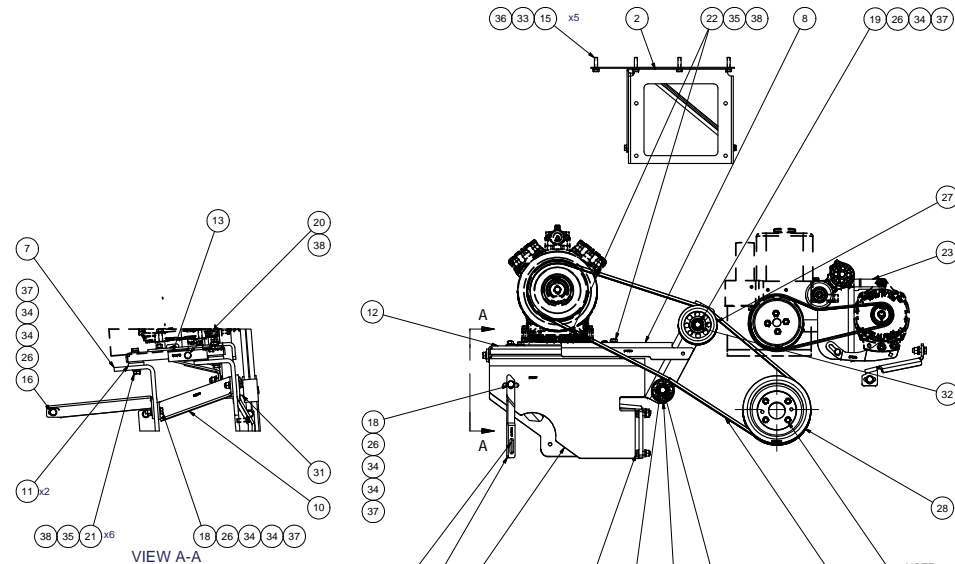
10/2/2013  
Page 1 of 1

Product Number	Description		Date	Weight	Uof M	Yield
Line    Component    Prod#	Description	Bin	Unit	Qty		
<b>KRC67001</b>	<b>Kit, Retrofit, ISB, Air Filter Reloc,'13</b>		<b>05/15/13</b>	<b>0.00</b>		<b>0</b>
10 10031369	Brkt, Mtg, Air Clean		each	1		
20 01789262	Elbow, Rubber, 6.00		each	1		
30 01432798	Clamp, Spring, Load		each	2		
40 01856038	Clamp, Spring, Load		each	1		
50 10031278	Tube, Air, Intake		each	1		
60 00014917	Elbow, Rubber, Cobr		each	1		

REF: KRC67001 AIR  
INLET RELOCATION KIT



ISOMETRIC VIEW



VIEW A-A

NOTE:  
USE EXISTING  
OEM FASTENER.

NOTE:  
RE-USE (4) EXISTING  
OEM BOLTS

NOTE:  
INSTALL PULLEY WITH  
DEEP OFFSET TOWARD SPACER.

NOTES:

- 1) USE SERVICABLE THREADLOCKER ON ALL FASTENERS TO ENGINE COMPONENTS AND TORQUE ALL BOLTS TO S.A.E. SPECIFICATIONS.
- 2) SEE "TRANSARCTIC A/C COMPRESSOR MOUNT INSTALLATION DISCLAIMER".

ITEM	QTY	U/M	PART NUMBER	DESCRIPTION
38	13	EACH	WLP08000	WASHER, LOCK, 1/2", 5, PLT
37	9	EACH	WL12000	WASHER, LOCK, 12mm, 8.8, PLT
36	7	EACH	WL10000	WASHER, LOCK, 10mm, 8.8, PLT
35	12	EACH	WFO08000	WASHER, FLAT, 1/2", 8, PLT
34	16	EACH	WFA12000	WASHER, FLAT, 12mm, 8.8, PLT
33	9	EACH	WFA10000	WASHER, FLAT, 10mm, 8.8, PLT
32	2	EACH	SLV17012	SLEEVE, PULLEY, 16.90 x 22.23 mm x12.19i
31	1	EACH	SCD41012	SPACER, COL, DRL 41mm x 25.40 x 12.3i
30	1	EACH	SCD37012	SPACER, COL, DRL 37mm x 25.40 x 12.3i
29	1	EACH	PUL80074	PULLEY, IDLER, BACKSIDE, PS, 74D, 46.27W
28	1	EACH	PUL67223	PULLEY, CRANK, ADD-ON, COMBO, ISB, 2B/3V
27	1	EACH	PJAO5012	PULLEY, ASSY, IDLER, B/BX or, 5" STL, PLT
26	9	EACH	NTA12000	NUT, HEX, 12 x 1.75, 8.8, PLT
25	2	EACH	NTA10000	NUT, HEX, 10 x 1.5, 8.8, PLT
24	1	EACH	KBT83990	MT KIT, TRANSIT, 4xFCY, '12
23	1	EACH	KAC64163	ALT. KIT, 24V, ISB, T3RE, '13
22	2	EACH	BT008151	BOLT, HEX, 1/2-20UNF x 1.50, 8, PLT
21	10	EACH	BT008126	BOLT, HEX, 1/2-20UNF x 1.25, 8, PLT
20	1	EACH	BT098653	BOLT, HEX, 1/2-13UNC x 6.50, 5, PLT, FT
19	2	EACH	BT12100	BOLT, HEX, 12 x 1.75 x 100mm, 10.9, PLT
18	2	EACH	BT12050	BOLT, HEX, 12 x 1.75 x 50mm, 10.9, PLT
17	4	EACH	BT12040	BOLT, HEX, 12 x 1.75 x 40mm, 10.9, PLT
16	1	EACH	BT12035	BOLT, HEX, 12 x 1.75 x 35mm, 10.9, PLT
15	5	EACH	BT10040	BOLT, HEX, 10 x 1.5 x 40mm, 10.9, PLT
14	2	EACH	BT10025	BOLT, HEX, 10 x 1.5 x 25mm, 10.9, PLT
13	1	EACH	BMN90025	BKT, BACK, PL, SLIDE, IC, RE300
12	1	EACH	BMN90009	BKT, MAIN, BASE, PL, IC, RE300
11	2	EACH	BMN90008	VIBRATION ISOLATOR, BAR, 16.50 x 2 x 1.50
10	1	EACH	BMCS3059	BKT, DIAG, BRACE, FRNT, MFD, RE300
9	1	EACH	BMCS3057	BKT, MAIN, FRNT, PL, MFD, RE300
8	1	EACH	BMCS3054	BKT, MAIN, IDLER, WELDM'T, RE300
7	1	EACH	BMCS3052	BKT, MAIN, RR, PL, MFD, RE300
6	1	EACH	BMCS3047	BKT, BRACE, VERT, RR, BUMPER, ISC, D3
5	1	EACH	BMCS7096	BKT, DIAG, BRACE, DS, FRAME RAIL, T3RE
4	1	EACH	BMCS7095	BKT, DIAG, BRACE, PS, FUSE PANEL, T3RE
3	1	EACH	BMCS7094	BKT, DIAG, BRACE, DS, FUSE PANEL, T3RE
2	1	EACH	BMCS7093	BKT, FUSE, PANEL, VERT, ISB, T3RE
1	2	EACH	BEL2235	BELT, B Gr, 2235 mm (88") (BX85)

BILL OF MATERIALS

UNSPECIFIED TOLERANCES:	ALL DIMS	THIRD ANGLE PROJECTION
ONE DECIMAL PLACE (X.1)	30 (3.00)	
TWO DECIMAL PLACES (X.00)	25 (2.50)	
THREE DECIMAL PLACES (X.000)	25 (2.500)	
FRACTIONAL (1/16")	ANGULAR (1/2°)	

DRAWN	Jeff Primer	04/22/13
CHECKED	Val Jakovlew	04/24/13
REVISION	DESCRIPTION	DATE
1	RELEASED TO PRODUCTION	5/16/2013
2	James Stewart	4/24/2013
3	James Stewart	04/24/13
4	Dale Mason	04/24/13

**TRANSARCTIC INC.**

TITLE: MT KIT, ISB13, T3RE, FK40/4xFC, '13

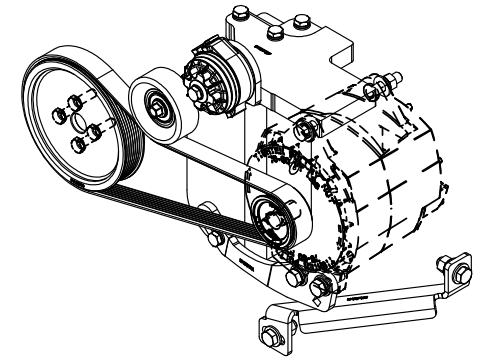
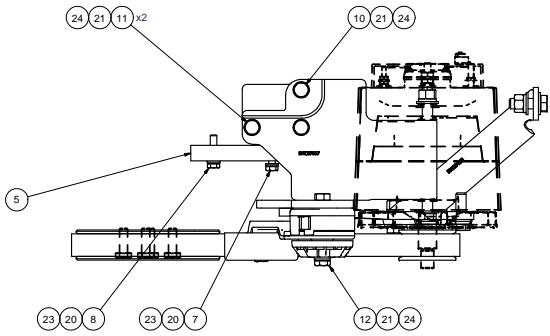
DATE: 04/24/13

SCALE: 1:1

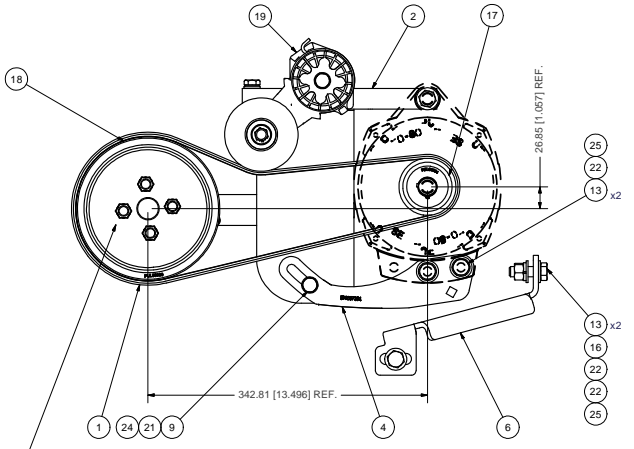
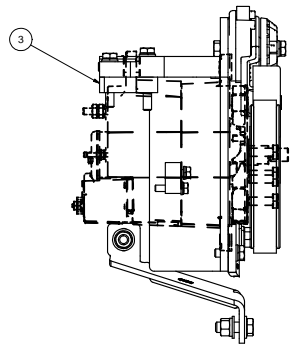
DWG NO: KMC64063

REV: 0

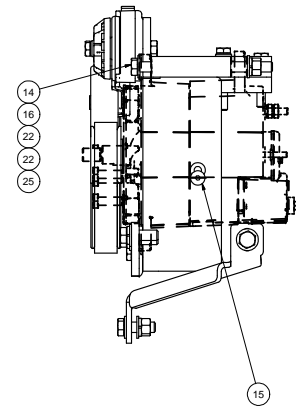
SHEET 1 OF 1



ISOMETRIC VIEW



NOTE:  
RE-USE (4) EXISTING  
OEM BOLTS



NOTES:  
1) USE SERVICABLE THREADLOCKER ON ALL FASTENERS TO ENGINE COMPONENTS AND TORQUE **ALL** BOLTS TO S.A.E. SPECIFICATIONS.  
2) SEE "TRANSARCTIC A/C COMPRESSOR MOUNT INSTALLATION DISCLAIMER".  
3) WEIGHT: 35.06 LB

ITEM	QTY	U/M	PART NUMBER	DESCRIPTION
25	5	EACH	WLO08000	WASHER, LOCK, 1/2", 8, PLT
24	5	EACH	WLA10000	WASHER, LOCK, 10mm, 8.8, PLT
23	2	EACH	WLA08000	WASHER, LOCK, 8mm, 8.8, PLT
22	8	EACH	WFO08000	WASHER, FLAT, 1/2", 8, PLT
21	5	EACH	WFA10000	WASHER, FLAT, 10mm, 8.8, PLT
20	2	EACH	WFA08000	WASHER, FLAT, 8mm, 8.8, PLT
19	1	EACH	TEN80005	TENR, HD SPRING, BACKSIDE, CCW (89430)
18	1	EACH	PUL83008	PULLEY, FAN, ADD-ON, CLM, ISC, 8.3, 8gr
17	1	EACH	PUL80064	PULLEY, ALT, FRONTSIDE, P8, 63.5d (3972808)
16	3	EACH	NTO08000	NUT, HEX, 1/2-13UNC, 8, PLT
15	1	EACH	CSF08031	CAPSCREW, FH, 8 x 1.25 x 30mm, 10.9, PLT
14	1	EACH	BTQ08653	BOLT, HEX, 1/2-13UNC x 6.50, 8, PLT, FT
13	4	EACH	BTQ08150	BOLT, HEX, 1/2-13UNC x 1.50, 8, PLT
12	1	EACH	BTC10080	BOLT, HEX, 10 x 1.5 x 80mm, 10.9, PLT, FT
11	2	EACH	BTC10070	BOLT, HEX, 10 x 1.5 x 70mm, 10.9, PLT
10	1	EACH	BTC10060	BOLT, HEX, 10 x 1.5 x 60mm, 10.9, PLT
9	1	EACH	BTC10030	BOLT, HEX, 10 x 1.5 x 30mm, 10.9, PLT
8	1	EACH	BTC08035	BOLT, HEX, 8 x 1.25 x 35mm, 10.9, PLT
7	1	EACH	BTC08015	BOLT, HEX, 8 x 1.25 x 15mm, 10.9, PLT
6	1	EACH	BMC67103	BKT, DIAG, BRACE, TENR, ISB, T3RE, '13
5	1	EACH	BMC67102	BKT, SPACER, BAR, ISB, T3RE, '13
4	1	EACH	BMC67101	BKT, TENR ARM, ALT, T3RE, '13
3	1	EACH	BMC67100	BKT, SPACER, 6.7L, ISB, T3RE, '13
2	1	EACH	BMC67097	BKT, MAIN, ALT, WELDMT, ISB, T3RE, '13
1	1	EACH	BEL1080	BELT, 6GR, 1080mm (42.5") (5080425)

BILL OF MATERIALS  
**TRANSARCTIC INC.**

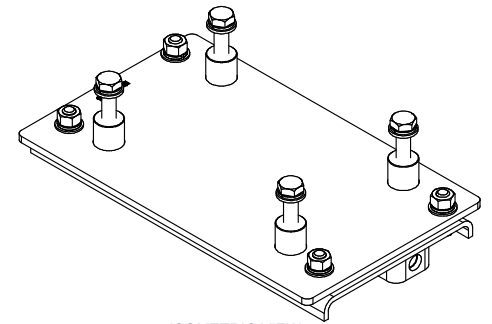
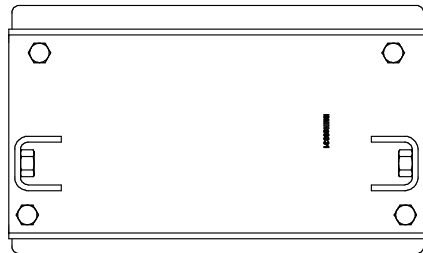
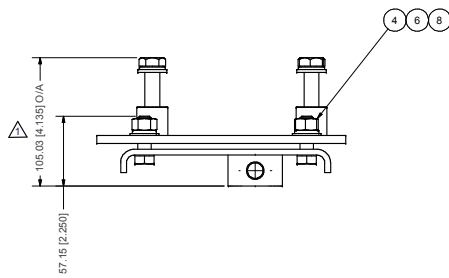
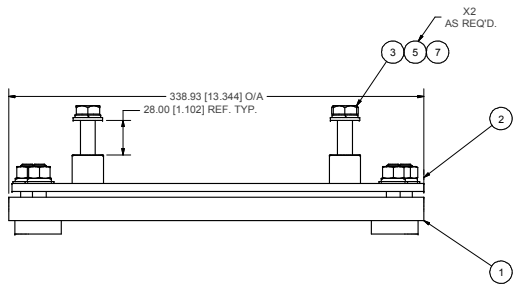
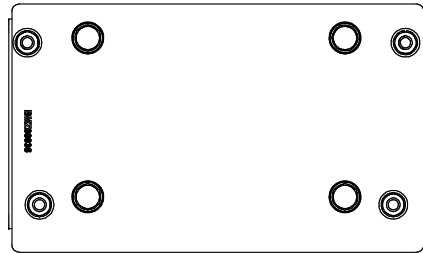
1	UPDATED FASTENERS	2/15/2013	JJP
0	RELEASED FOR PRODUCTION	2/25/2013	JRR
REV	DESCRIPTION	DATE	BY
1	UPD	2/15/2013	JAMES STEWART
2	REV	2/15/2013	RON INGRAM
3	APP	2/15/2013	DALE MASON

TITLE  
ALT. KIT, 24V, ISB, T3RE, '13  
SIZE D DWG NO KAC64163 REV 1  
SCALE 1:2 SHEET 1 OF 1

UNSPECIFIED TOLERANCES:  
ONE DECIMAL PLACE (X) .05 (FRA) .0025  
TWO DECIMAL PLACE (X) .01 (FRA) .00125  
THREE DECIMAL PLACE (X) .005 (FRA) .000625  
FRACTIONAL (X) 1/32 (FRA) .003125  
ANGULAR (X) .25 (FRA) .0025



DRAWING UNIT OF MEASURE: MM (INCH)  
SCALE: 1:2



ISOMETRIC VIEW

- NOTES:**
- 1) USE SERVICABLE THREADLOCKER ON ALL FASTENERS TO ENGINE COMPONENTS AND TORQUE **ALL** BOLTS TO S.A.E. SPECIFICATIONS.
  - 2) SEE "TRANSARTIC A/C COMPRESSOR MOUNT INSTALLATION DISCLAIMER".
  - 3) WEIGHT: 15.17 LBS.

ITEM	QTY	U/M	PART NUMBER	DESCRIPTION
8	4	EACH	WLP07000	WASHER, LOCK, 7/16", 5, PLT
7	4	EACH	WLA12000	WASHER, LOCK, 12mm, 8.8, PLT
6	4	EACH	WFN07000	WASHER, FLAT, 7/16", 2, PLT
5	8	EACH	WFA12000	WASHER, FLAT, 12mm, 8.8, PLT
4	4	EACH	NTP07000	NUT, HEX, 7/16-14UNC, 5, PLT
3	4	EACH	BTC12060	BOLT, HEX, 12 x 1.75 x 60mm, 10.9, PLT
2	1	EACH	BM200036	BKT, ADAPTER, WELDIT, 4xFCY
1	1	EACH	BMN80031	BKT, MAIN, SLIDE, ASSY, 05K, IC, RE300

**TRANSARTIC INC.**

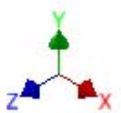
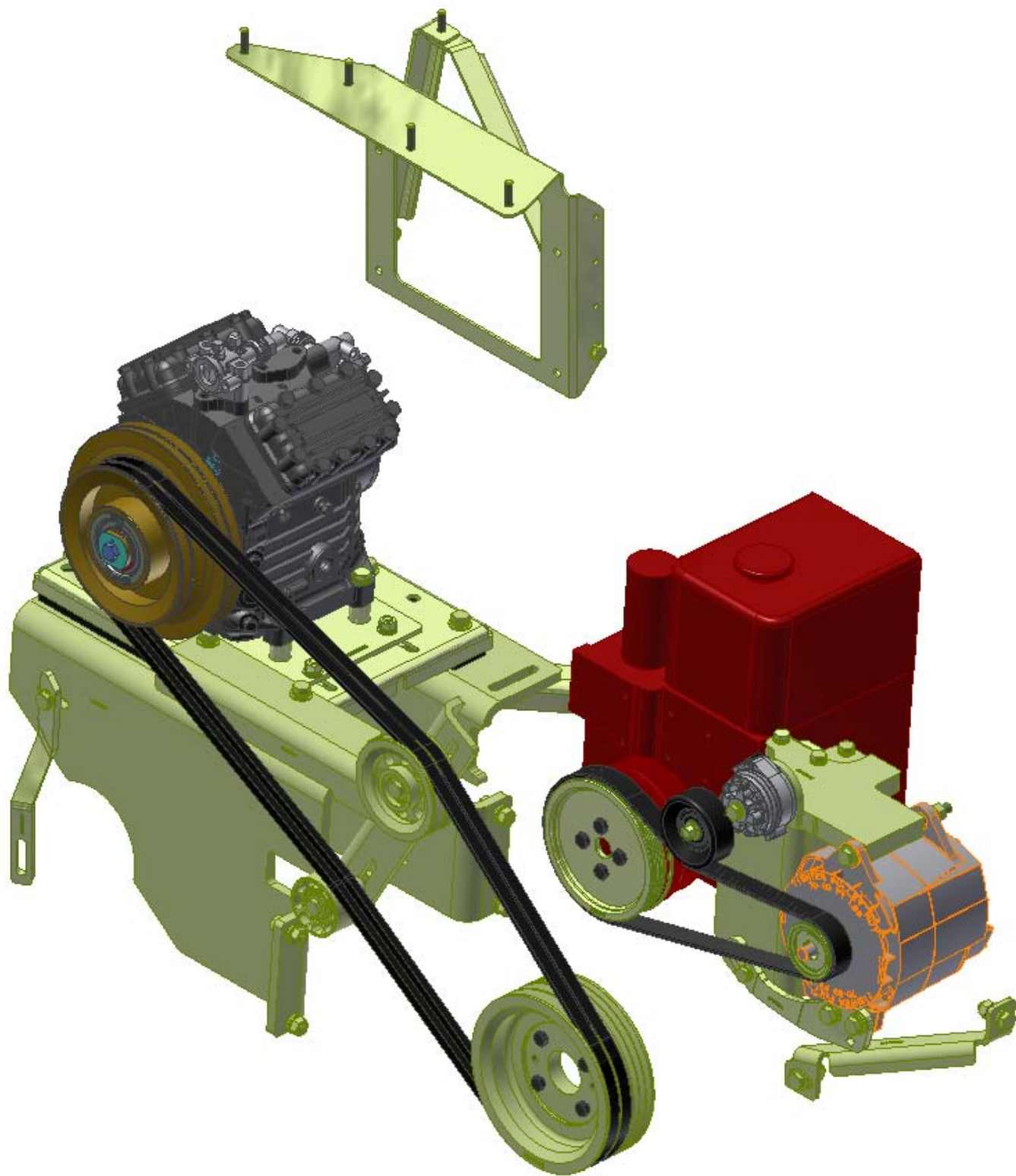
BILL OF MATERIALS			
DRAWN	vjakowlew	3/13/2012	TITLE
CHECKED	vjakowlew	3/13/2012	MT KIT, TRANSIT, 4xFCY, '12
REV	ECN	DESCRIPTION	DATE
0		O/A WAS 96.0mm, BOM UPDATED	4/24/2013 JHP
0		RELEASED TO PRODUCTION	3/14/2012 VAL
		DATE	BY
		3/13/2012	James Stewart
		3/13/2012	Ron Ingram
		3/13/2012	Dale Mason

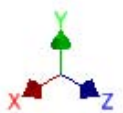
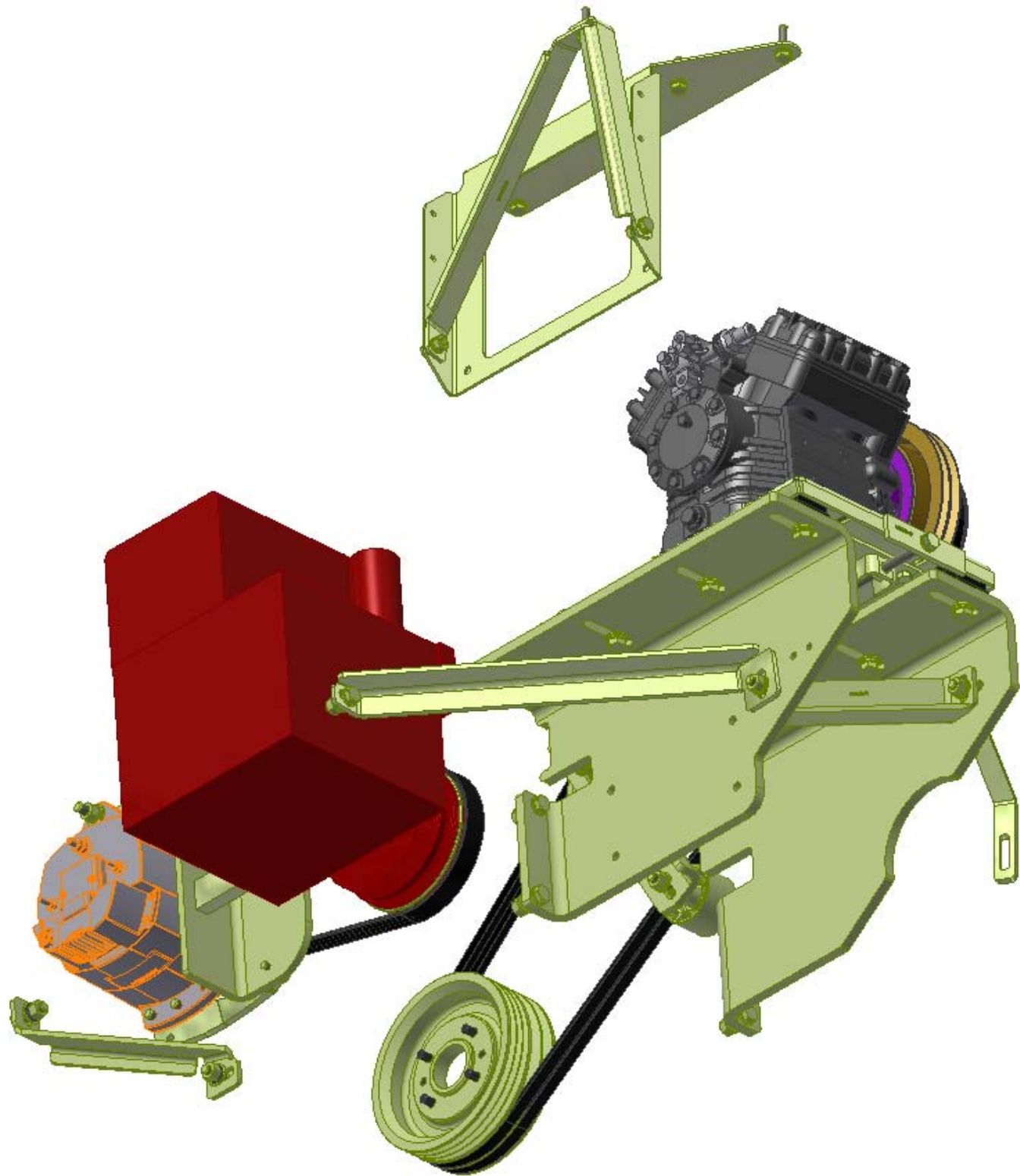
UNSPECIFIED TOLERANCES: (ALL DIM) GROUP  
 ONE DECIMAL PLACE (10) 25 USE  
 THIRSDIGITAL PLACE (100) 50 USE  
 FRACTIONAL (1/32) 25 USE  
 ANGLES (1) 25 USE

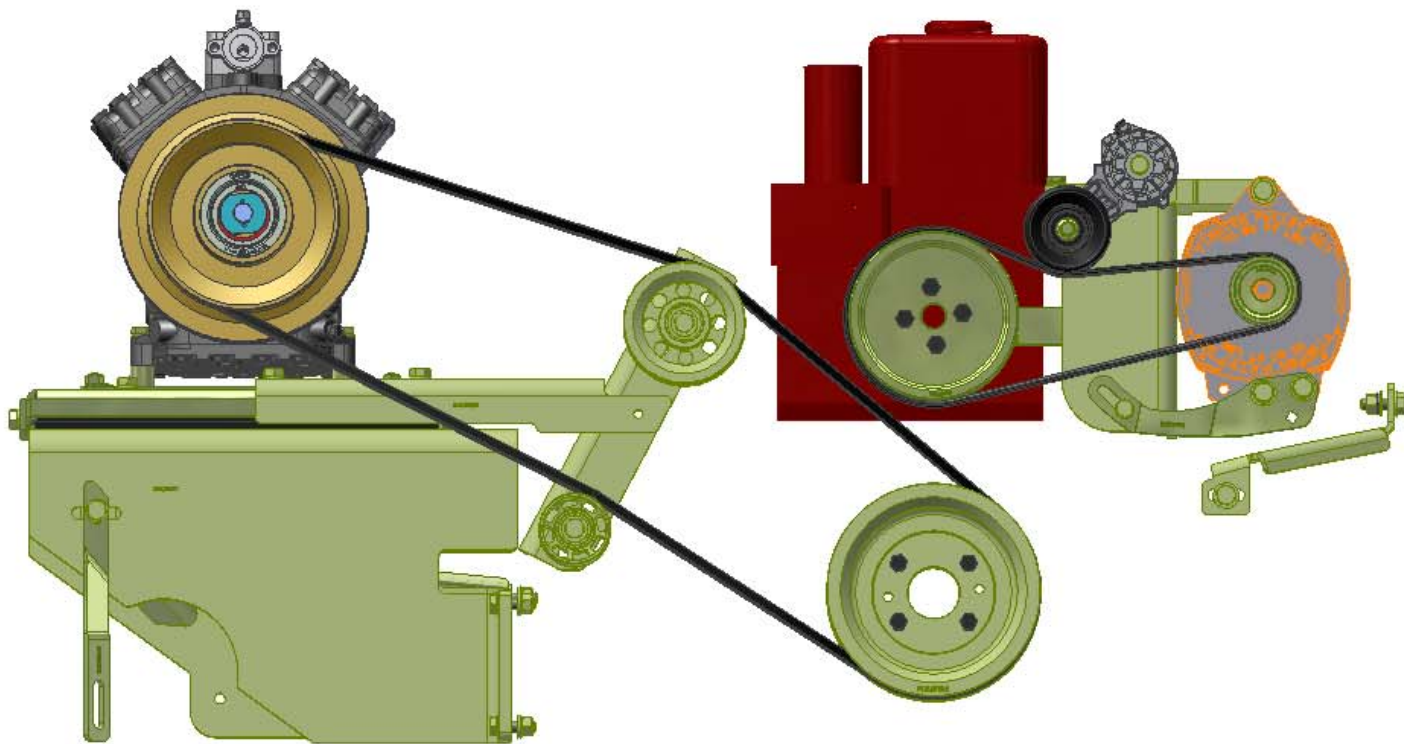
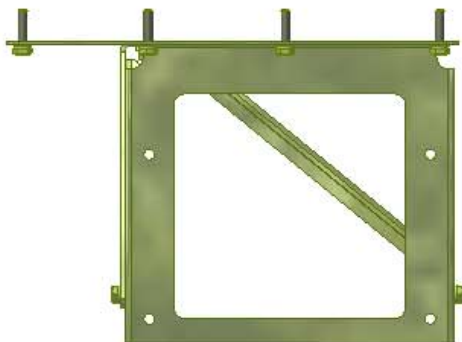


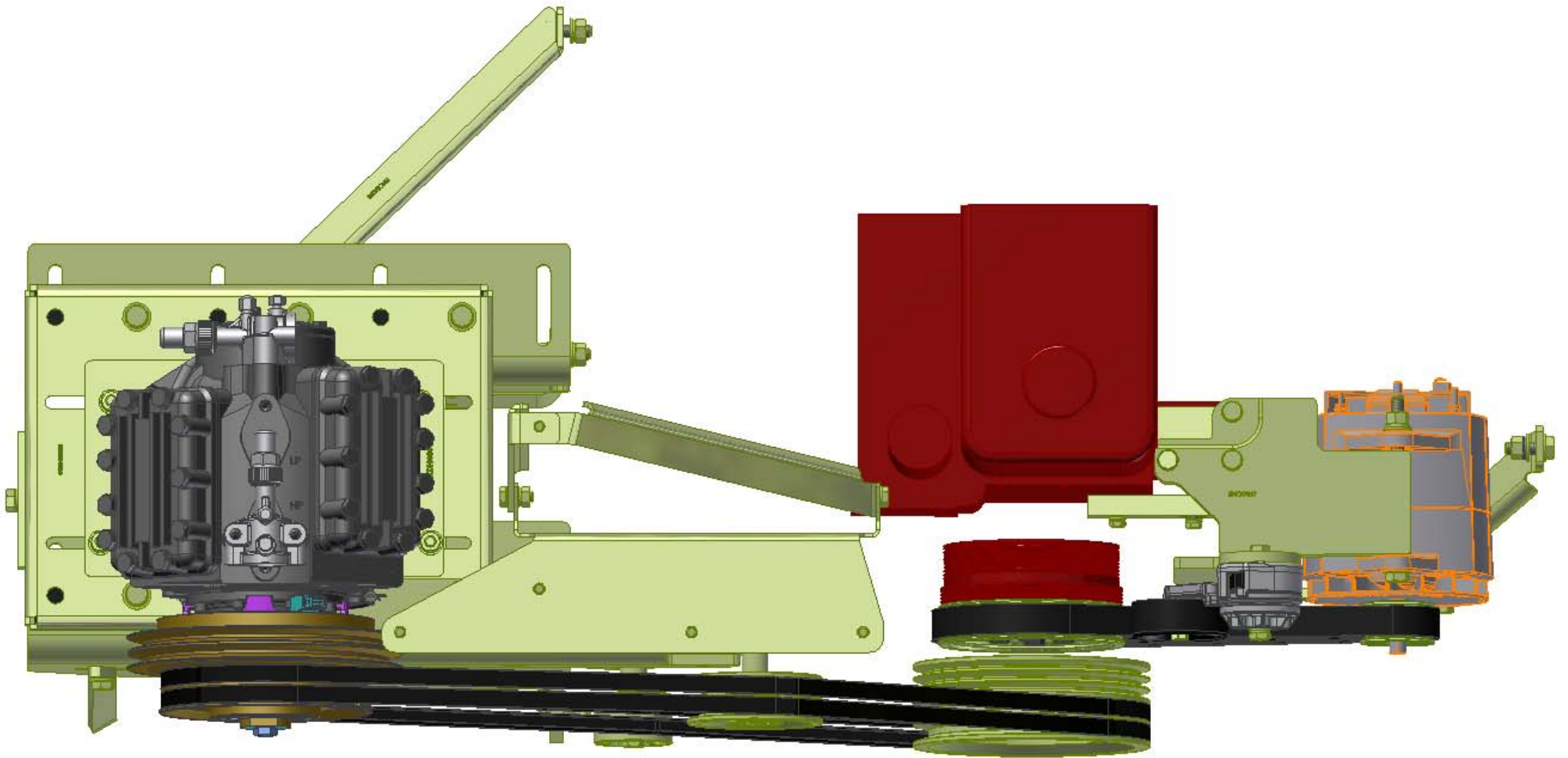
DWG NO: KBT83990  
 SCALE: 1:2  
 SHEET 1 OF 1



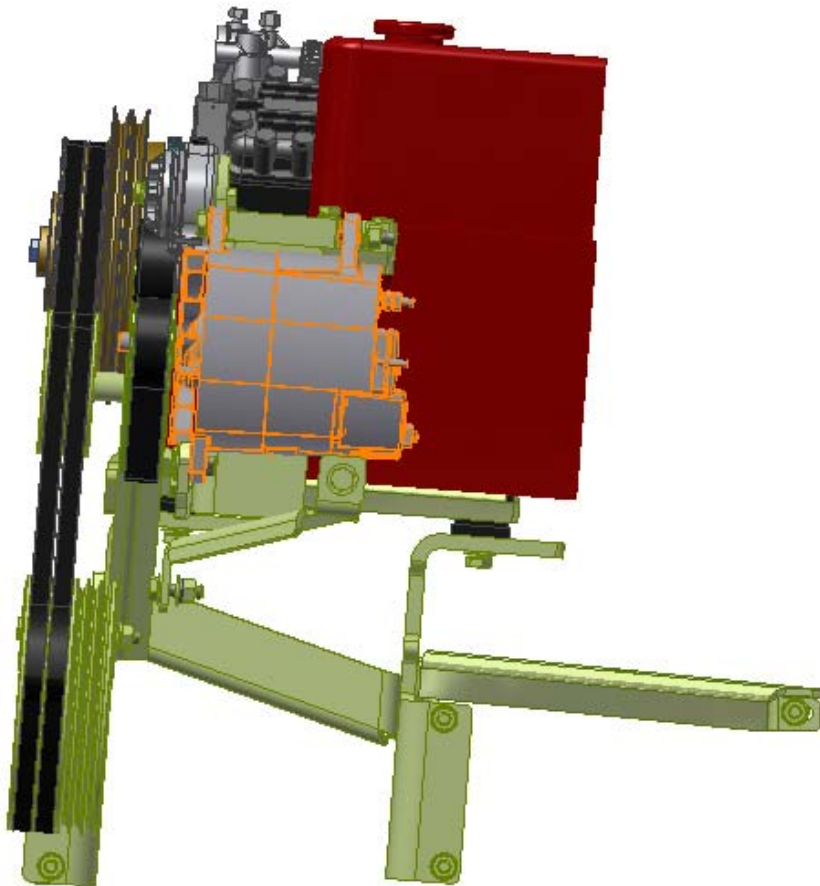
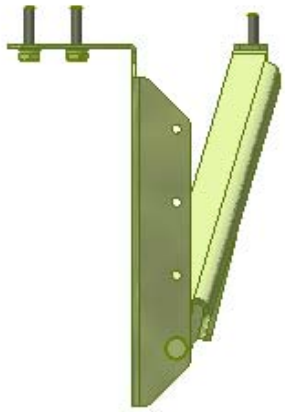


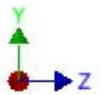
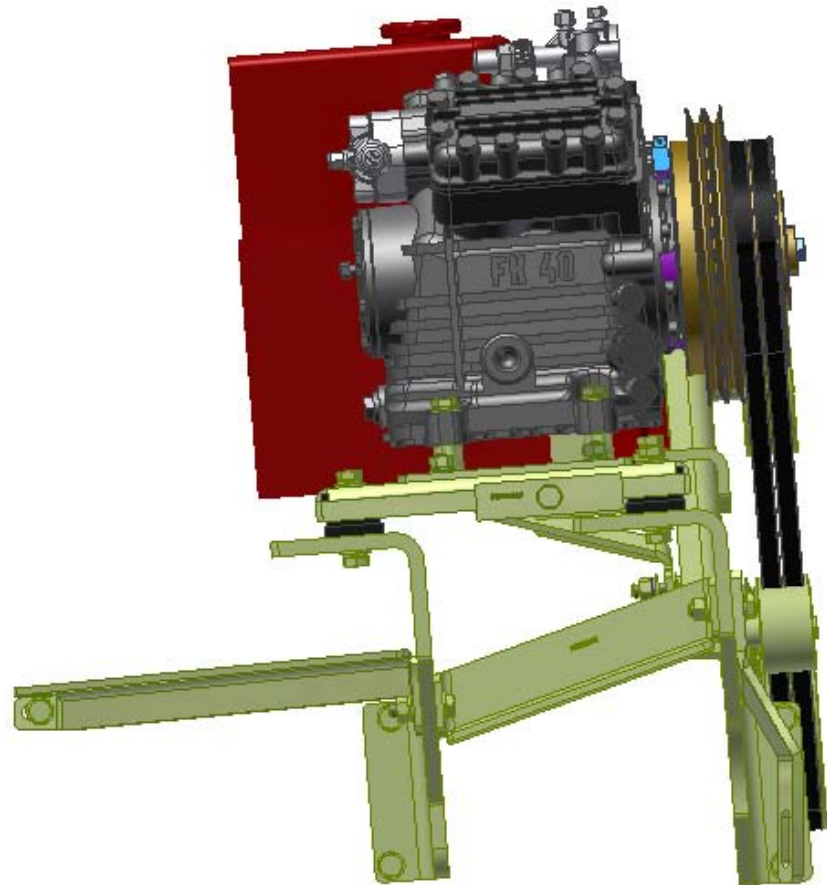
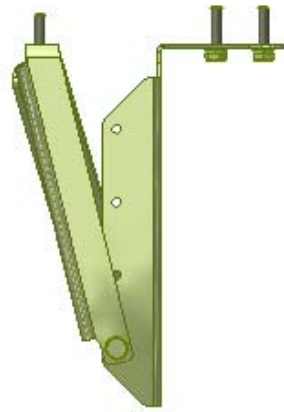












## **TransArctic A/C Compressor Mount Installation Disclaimer**

All compressor mounts should be installed by qualified and trained personnel using proper tools and equipment in safe working conditions following industry standard guidelines for motor vehicle service and repair.

The installer of any compressor mount purchased from TransArctic must undertake all responsibility of issues arising from that compressor bracket being installed on any vehicle. As well as insure that a **proper and sufficient ground** is established between the compressors' clutches and the vehicle's engine. Mount functionality, operation and durability can all be compromised by an incompetent installation.

Due to the many different situations, parameters and application criteria, which are beyond the compressor mount manufacturer's control, TransArctic does not warrant design, durability, or operational functionality of any compressor mount improperly installed by another party.

**With no implied guarantees it is the mount installer's strict responsibility to determine safety and functionality, of the compressor mount, at the time of installation.**

Please contact TransArctic with any issue arising from installation so we may better improve the product. If you have any reservations about the compressor mount integrity contact TransArctic immediately at 1-877-COLD-AIR.

**Mark OEM tensioner location**

**Install Kit**

**Check for Interferences**

**Check to ensure that the proper OEM tensioner orientation is maintained**

**Run engine with A/C system engaged for at least 10 minutes to run in belt**

**Check OEM tensioner orientation and adjust as required**

### **Responsabilidad limitada de TransArctic en la instalación del soporte del compresor**

Todos los soportes de los compresores deben ser instalados por personas calificadas y entrenadas, usando para ello los equipos y herramientas necesarios para esta labor en buenas condiciones y según las normas y guías para el servicio y/o reparación de motores de vehículos.

El instalador de los soportes comprados en TransArctic asume toda la responsabilidad de cualquier problema que surga en el soporte del compresor al vehículo; de igual manera es responsable que el cable a tierra sea conectado entre el embrague del compresor y el motor del vehículo.

Se advierte que el buen funcionamiento y la durabilidad del soporte pueden ser comprometidos por defectos en su instalación.

Debido a las diversas situaciones que se puedan presentar fuera del control del fabricante, TransArctic no garantiza el diseño, la durabilidad o el correcto funcionamiento de cualquier equipo inapropiadamente instalado por terceros.

**Esta sobreentendido que el Instalador del montaje del compresor es estrictamente responsable de la seguridad y funcionamiento del equipo en el momento de la instalación.**

Si tuviera algún problema o duda acerca de la instalación del soporte del compresor pongase en contacto inmediatamente con TransArctic al teléfono 1-877-COLD-AIR de modo que podamos mejorar nuestro producto.

**Note la ubicación del medidor de tensión OEM**

**Instale el equipo**

**Controlar si hay interferencias.**

**Asegurese que el medidor de tensión mantenga la orientación justa.**

**Encienda el motor por lo menos 10 minutos con el sistema A/C enganchado para que la correa corra**

**Controle la orientación justa del medidor de tensión y ajuste a las condiciones requeridas del fabricante**