

Bill of Materials Listing

TransArctic Canada Inc.

5/17/2017
Page 1 of 1

Product Number	Description	Date	Weight	Uof M	Yield
Line Component Prod#	Description	Bin Unit	Qty		
KMC92693	Mt Kit, ISL 2016, HDX , 2 TM-21, '16		3/17/2016	24.61	0
10 BEL11753	Belt, A gr, 1753mm (69") (17690)	each	1		
20 BEL82134	Belt, 8gr, 2134mm (84")	each	1		
30 BMC67022	Bkt, Upper, Weldmt, D/S, ISB, TM-21	each	1		
40 BMC67023	Bkt, Lower, Weldmt, D/S, ISB, TM-21	each	1		
50 BMC67141	Bkt, Main, Weldm't, Tensioner, HDX, '16	each	1		
60 BMC90007	Bkt, Cradle, ISL, R/H, TM-21, 87mm, 90/ccw	each	1		
70 BMC90008	Bkt, Cradle, ISL, L/H, TM-21, 92mm, 90/ccw	each	1		
80 KPC89001	Kit, Pulley, ISL, 8.9L, A/X, 8", 2013	each	1		
130 TEN80007	Tenr, Spring, 94mm, A gr, CW, Assy	each	1		
140 KBC92693	Bag Kit, Fasteners, KMC92693	each	1		

Bill of Materials Listing

TransArctic Canada Inc.

2/8/2017
Page 1 of 1

Product Number	Description	Date	Weight	Uof M	Yield
Line Component Prod#	Description	Bin Unit	Qty		
KBC92693	Bag Kit, Fasteners, KMC92693		3/17/2016	1.65	0
10	BTC08035		Bolt, Hex, 8 x 1.25 x 35mm, 10.9, Plt,FT	each	2
20	BTC08100		Bolt, Hex, 8 x 1.25 x 100mm, 10.9, Plt	each	5
30	BTC08120		Bolt, Hex, 8 x 1.25 x 120mm, 10.9, Plt	each	2
40	BTC10040		Bolt, Hex, 10 x 1.5 x 40mm, 10.9, Plt,FT	each	3
50	BTC10130		Bolt, Hex, 10 x 1.5 x 130mm, 10.9, Plt	each	1
60	BTQ06300		Bolt, Hex, 3/8-16unc, 3.00", 8, Plt	each	1
70	CSF10041		Capscrew, FH, 10 x 1.5 x 40mm, 10.9,Plt	each	1
90	NTA10000		Nut, Hex, 10 x 1.5, 8.8, Plt	each	4
100	WFA08000		Washer, Flat, 8mm, 8.8, Plt	each	9
110	WFA10000		Washer, Flat, 10mm, 8.8, Plt	each	8
115	WFN06000		Washer, Flat, 3/8", 2, Plt	each	1
120	WLA08000		Washer, Lock, 8mm, 8.8, Plt	each	9
130	WLA10000		Washer, Lock, 10mm, 8.8, Plt	each	5
140	WLP06000		Washer, Lock, 3/8", 5, Plt	each	1

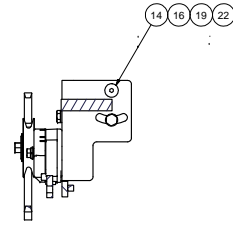
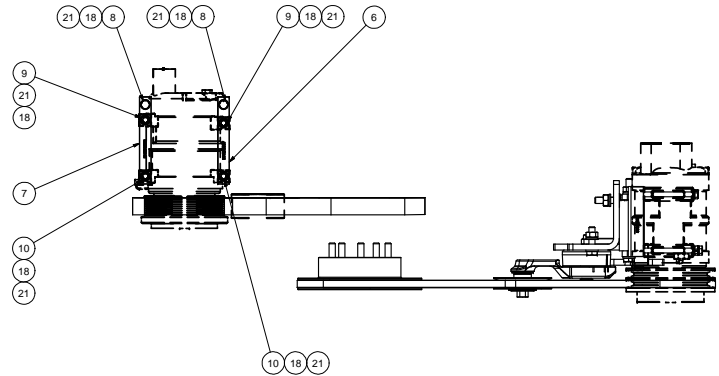
Bill of Materials Listing

TransArctic Canada Inc.

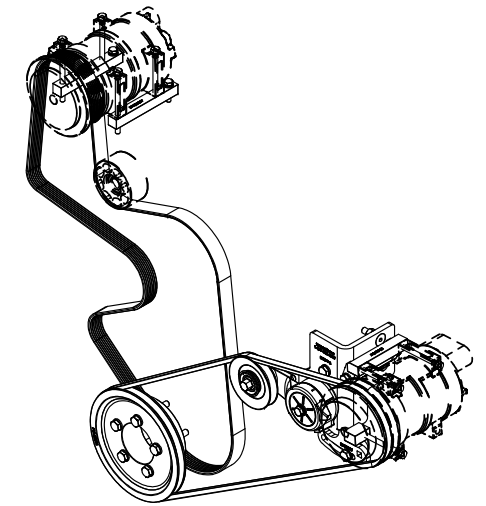
3/18/2016

Page 1 of 1

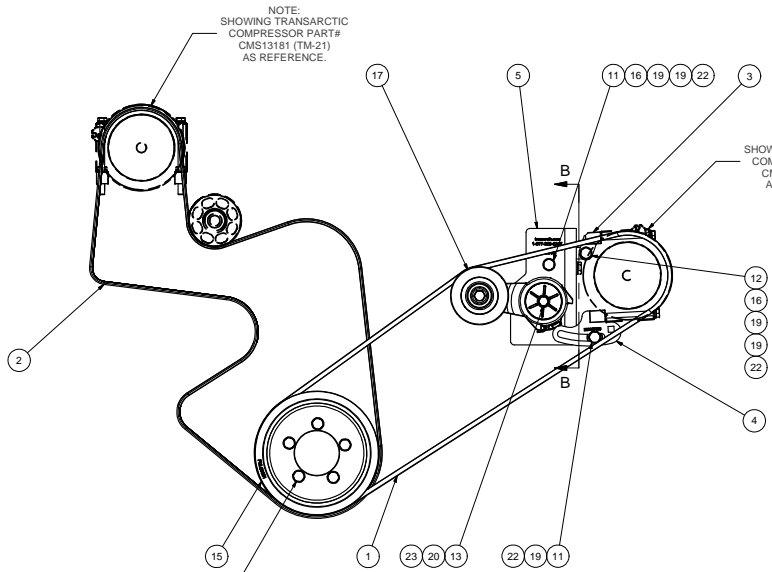
Product Number		Description	Bin	Date	Weight	Uof M	Yield
Line	Component Prod#	Description		Unit	Qty		
KPC89001		Kit, Pulley, ISL, 8.9L, A/X, 8",2013		10/15/2013	8.52		0
10	PUL89001	Pulley, Crank, ISL, 8.9L, A/X, 8", '13		each	1		
20	BTC10070	Bolt, Hex, 10 x 1.5 x 70mm, 10.9, Plt		each	5		
30	WFA10000	Washer, Flat, 10mm, 8.8, Plt		each	5		



SECTION B-B



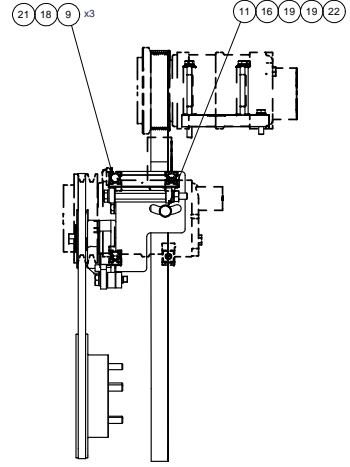
ISOMETRIC VIEW



NOTE:
SHOWING TRANSARTIC
COMPRESSOR PART#
CMS13181 (TM-21)
AS REFERENCE.

NOTE:
SHOWING TRANSARTIC
COMPRESSOR PART#
CMS13120 (TM-21)
AS REFERENCE.

NOTE:
TORQUE TO: 48 FT-LB PLAIN & LUBRICATED W/ CLEAN ENGINE OIL (15W-40)
(HEXBOLT CAPSCREW M10 x 1.5 x 70mm)
TIGHTEN IN TWO STEPS IN A CRIS-CROSS TIGHTENING SEQUENCE PATTERN.

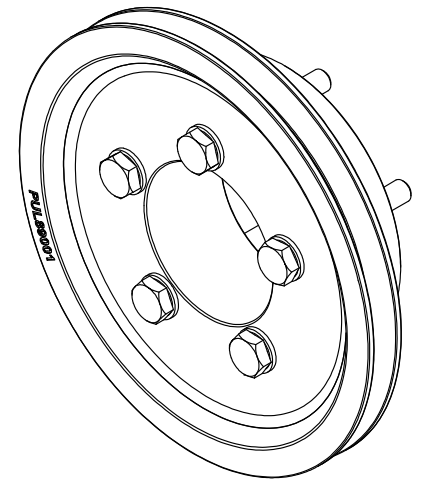
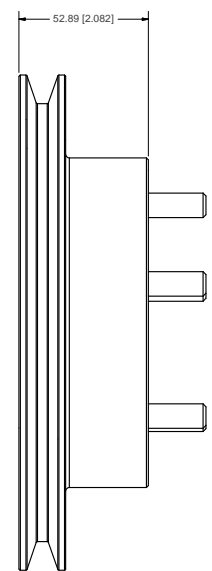
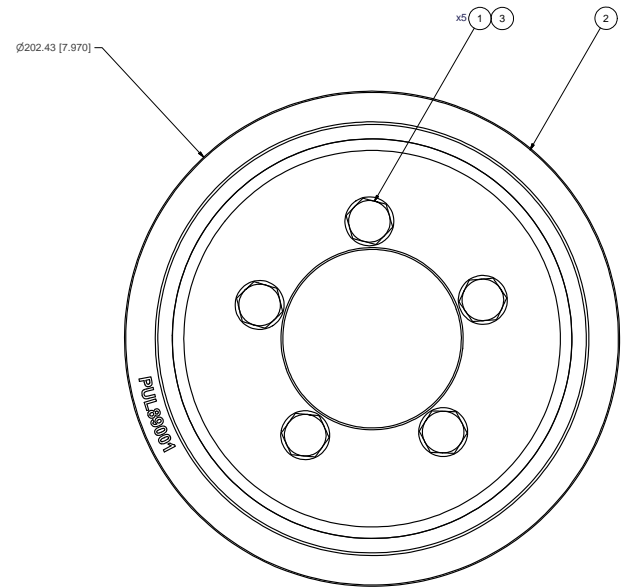
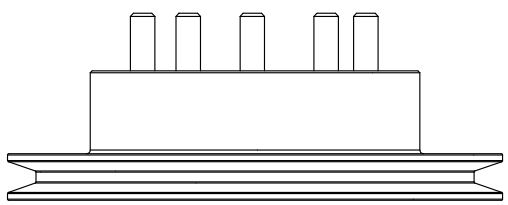


NOTES:

- 1) USE SERVICABLE THREADLOCKER ON ALL FASTENERS TO ENGINE COMPONENTS AND TORQUE ALL BOLTS TO S.A.E. SPECIFICATIONS.
- 2) SEE "TRANSARTIC A/C COMPRESSOR MOUNT INSTALLATION DISCLAIMER".

ITEM	QTY	U/M	PART NUMBER	DESCRIPTION
23	1	EACH	WLO06000	WASHER, LOCK, 3/8", 8, PLT
22	5	EACH	WLA10000	WASHER, LOCK, 10mm, 8.8, PLT
21	9	EACH	WLA08000	WASHER, LOCK, 8mm, 8.8, PLT
20	1	EACH	WFN06000	WASHER, FLAT, 3/8", 2, PLT
19	8	EACH	WFA10000	WASHER, FLAT, 10mm, 8.8, PLT
18	9	EACH	WFA08000	WASHER, FLAT, 8mm, 8.8, PLT
17	1	EACH	TEN00007	TENR, SPRING, 94mm, A GR, CW, ASSY
16	4	EACH	NTA10000	NUT, HEX, 10 x 1.5, 8.8, PLT
15	1	EACH	KPC89001	KIT, PULLEY, ISL, 8.9L, A/X, 8", 2013
14	1	EACH	CSF10041	CAPSCREW, FH, 10 x 1.5 x 40mm, 10.9, PLT
13	1	EACH	BTC06300	BOLT, HEX, 3/8-16UNC, 3", 8, PLT
12	1	EACH	BTC10130	BOLT, HEX, 10 x 1.5 x 130mm, 10.9, PLT
11	3	EACH	BTC10040	BOLT, HEX, 10 x 1.5 x 40mm, 10.9, PLT
10	2	EACH	BTC08120	BOLT, HEX, 8 x 1.25 x 120mm, 10.9, PLT
9	5	EACH	BTC08100	BOLT, HEX, 8 x 1.25 x 100mm, 10.9, PLT
8	2	EACH	BTC08025	BOLT, HEX, 8 x 1.25 x 35mm, 10.9, PLT
7	1	EACH	BMC90008	Bkt, Cradle, ISL, L/H, TM-21, 92mm, 90/ccw
6	1	EACH	BMC90007	Bkt, Cradle, ISL, R/H, TM-21, 87mm, 90/ccw
5	1	EACH	BMC67141	BKT, MAIN, WELDMT, TENSIONER, HDX, 16
4	1	EACH	BMC67023	BKT, LOWER, WELDMT, D/S, ISB, TM-21
3	1	EACH	BMC67022	BKT, UPPER, WELDMT, D/S, ISB, TM-21
2	1	EACH	BEL82134	BELT, 8GR, 2134mm (84")
1	1	EACH	BEL11753	BELT A GR, 1753mm (69") (17690)

DRAWN Jose Rodriguez 3/9/2016			TITLE
CHECKED James Stewart 3/9/2016			MT KIT, ISL 2016, HDX, 2 TM-21, '16
RELEASSED TO PRODUCTION 3/9/2016		DATE	BY
REVIEWED James Stewart 3/9/2016		DATE	BY
APPROVED Ron Ingram 3/9/2016		DATE	BY
APPROVED Dale Mason 3/9/2016		DATE	BY
UNSPECIFIED TOLERANCES: DIM DECIMAL PLACE (XX) .00 (FRACTIONAL) 1/32" DIM FRACTIONAL PLACE (XX) 1/32" DIM FRACTIONAL PLACE (XX) 1/64" DIM FRACTIONAL PLACE (XX) 1/16" DIM FRACTIONAL PLACE (XX) 1/8" DIM FRACTIONAL PLACE (XX) 1/4" DIM FRACTIONAL PLACE (XX) 1/2" DIM FRACTIONAL PLACE (XX) 3/4" DIM FRACTIONAL PLACE (XX) 1"			DWG NO KMC92693 REV 2
DRAWING UNIT OF MEASURE MM (INCH)		SCALE 1:4	SHEET 1 OF 1



ISOMETRIC VIEW

- NOTES:**
- 1) USE SERVICABLE THREADLOCKER ON ALL FASTENERS TO ENGINE COMPONENTS AND TORQUE **ALL** BOLTS TO S.A.E. SPECIFICATIONS.
 - 2) SEE "TRANSARCTIC A/C COMPRESSOR MOUNT INSTALLATION DISCLAIMER".
 - 3) WEIGHT: 15.74 LB

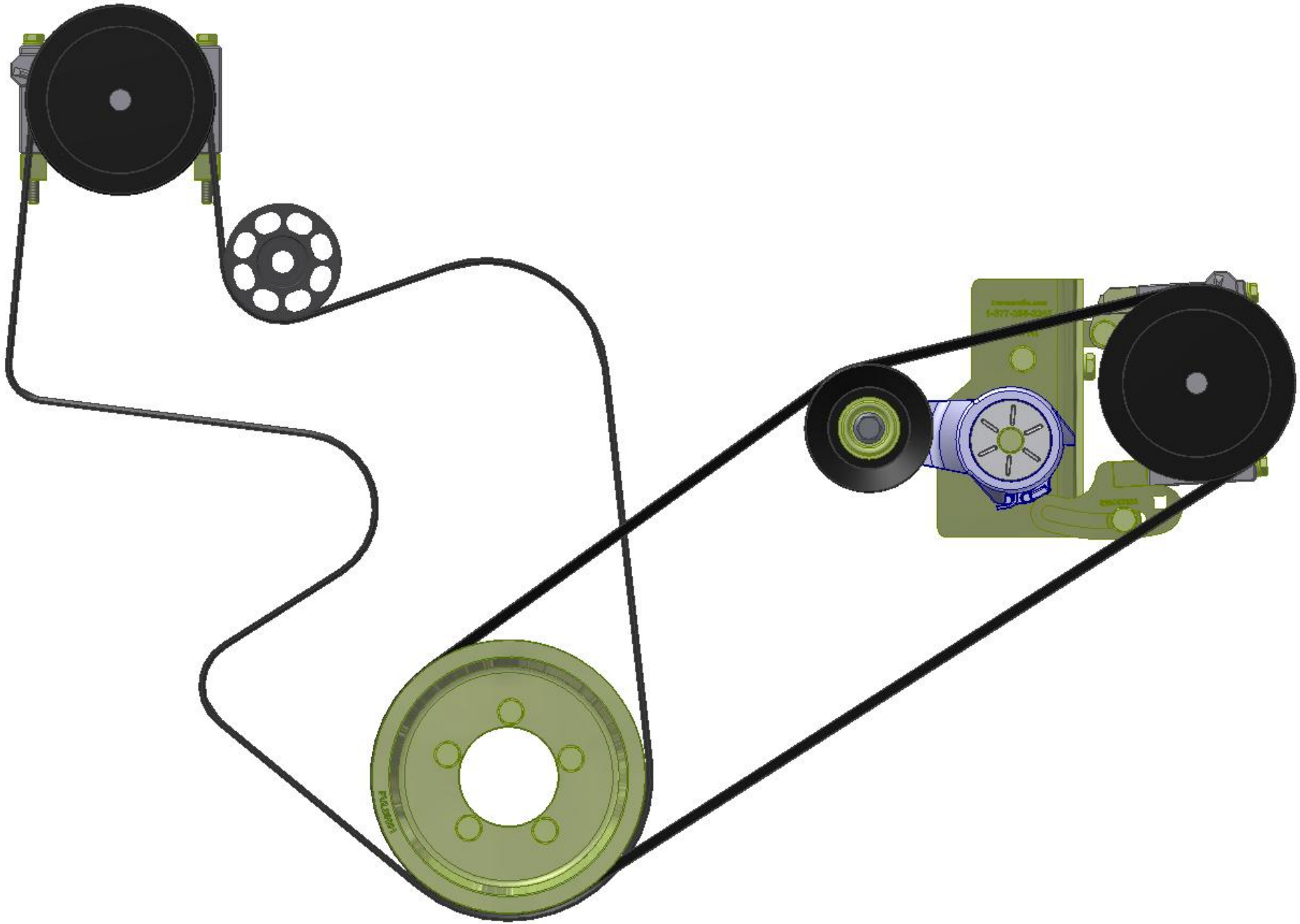
ITEM	QTY	U/M	PART NUMBER	DESCRIPTION
3	5	EACH	WFA10000	WASHER, FLAT, 10mm, 8.8, PLT
2	1	EACH	PUL89001	PULLEY, CRANK, ISL, 8.9L, AX, 8", 13
1	5	EACH	BTCT0070	BOLT, HEX, 10 x 1.5 x 70mm, 10.9, PLT

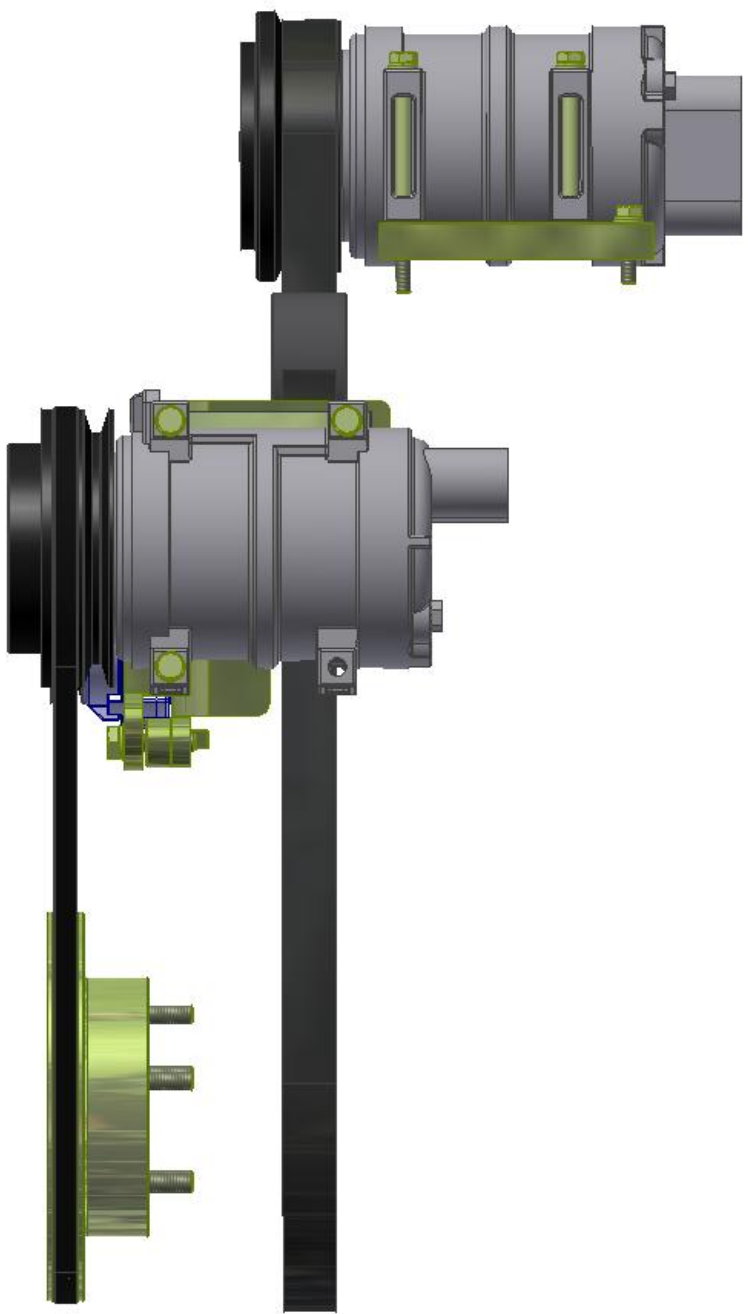
TRANSARCTIC INC.

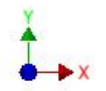
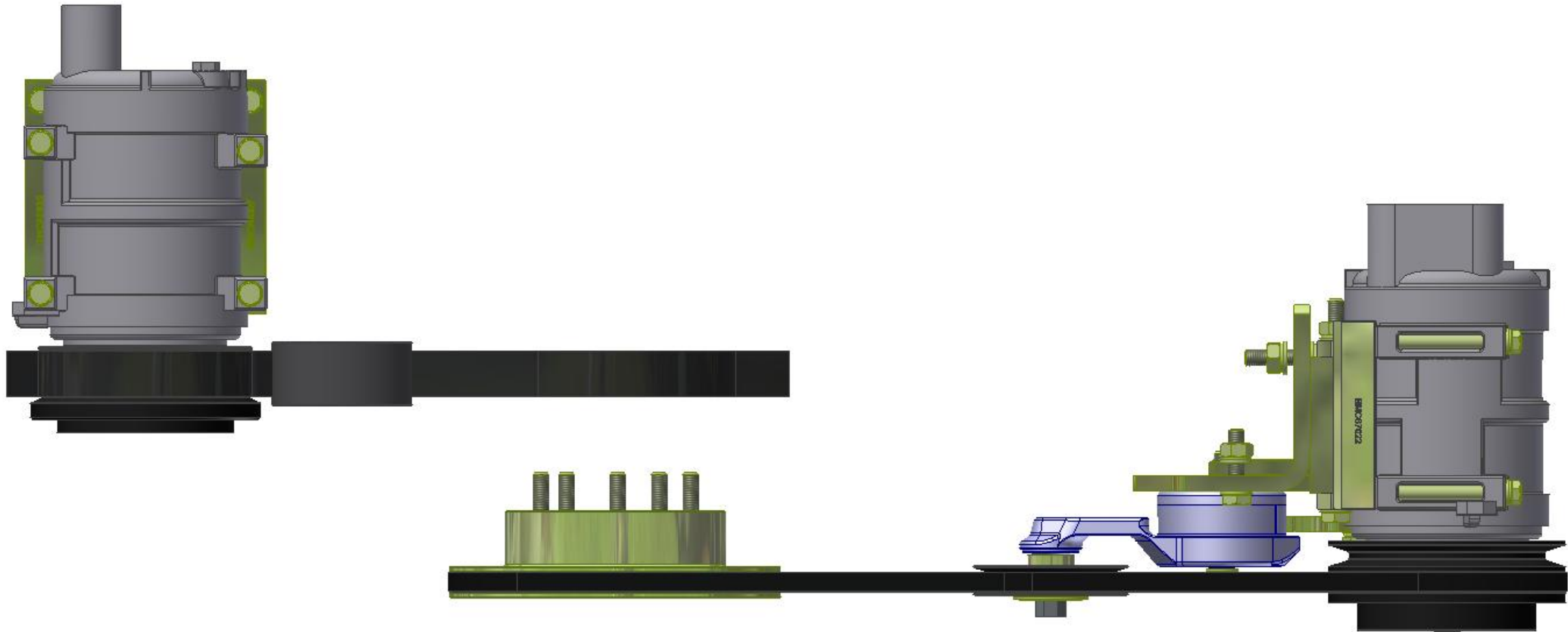
UNSPECIFIED TOLERANCES:	ALL DIMS	FRONT
ONE DECIMAL PLACE (X1)	±0.1	±0.005
TWO DECIMAL PLACE (X2)	±0.02	±0.002
THREE DECIMAL PLACE (X3)	±0.005	±0.001
FRACTIONAL (1/16")	±0.005	±0.001
ANGULAR (1/2°)	±0.1	

BROWN	11/7/2013	<p>TRANSARCTIC INC.</p> <p>TITLE</p> <p>KIT, PULLEY, ISL, 8.9L, A/X, 8", 2013</p> <p>SIZE</p> <p>D</p> <p>DWG NO</p> <p>KPC89001</p> <p>REV</p> <p>0</p>	
Checked	11/7/2013		
Released to Production	11/7/2013		
Approved	11/7/2013		
DATE	11/7/2013	SCALE	1:1
DRAWING UNIT OF MEASURE		MM (INCH)	
THIRD ANGLE PROJECTION		SHEET 1 OF 1	









TransArctic A/C Compressor Mount Installation Disclaimer

All compressor mounts should be installed by qualified and trained personnel using proper tools and equipment in safe working conditions following industry standard guidelines for motor vehicle service and repair.

The installer of any compressor mount purchased from TransArctic must undertake all responsibility of issues arising from that compressor bracket being installed on any vehicle. As well as insure that a **proper and sufficient ground** is established between the compressors' clutches and the vehicle's engine. Mount functionality, operation and durability can all be compromised by an incompetent installation.

Due to the many different situations, parameters and application criteria, which are beyond the compressor mount manufacturer's control, TransArctic does not warrant design, durability, or operational functionality of any compressor mount improperly installed by another party.

With no implied guarantees it is the mount installer's strict responsibility to determine safety and functionality, of the compressor mount, at the time of installation.

Please contact TransArctic with any issue arising from installation so we may better improve the product. If you have any reservations about the compressor mount integrity contact TransArctic immediately at 1-877-COLD-AIR.

Mark OEM tensioner location

Install Kit

Check for Interferences

Check to ensure that the proper OEM tensioner orientation is maintained

Run engine with A/C system engaged for at least 10 minutes to run in belt

Check OEM tensioner orientation and adjust as required

Responsabilidad limitada de TransArctic en la instalación del soporte del compresor

Todos los soportes de los compresores deben ser instalados por personas calificadas y entrenadas, usando para ello los equipos y herramientas necesarios para esta labor en buenas condiciones y según las normas y guías para el servicio y/o reparación de motores de vehículos.

El instalador de los soportes comprados en TransArctic asume toda la responsabilidad de cualquier problema que surga en el soporte del compresor al vehículo; de igual manera es responsable que el cable a tierra sea conectado entre el embrague del compresor y el motor del vehículo.

Se advierte que el buen funcionamiento y la durabilidad del soporte pueden ser comprometidos por defectos en su instalación.

Debido a las diversas situaciones que se puedan presentar fuera del control del fabricante, TransArctic no garantiza el diseño, la durabilidad o el correcto funcionamiento de cualquier equipo inapropiadamente instalado por terceros.

Esta sobreentendido que el Instalador del montaje del compresor es estrictamente responsable de la seguridad y funcionamiento del equipo en el momento de la instalación.

Si tuviera algún problema o duda acerca de la instalación del soporte del compresor pongase en contacto inmediatamente con TransArctic al teléfono 1-877-COLD-AIR de modo que podamos mejorar nuestro producto.

Note la ubicación del medidor de tensión OEM

Instale el equipo

Controlar si hay interferencias.

Asegurese que el medidor de tensión mantenga la orientación justa.

Encienda el motor por lo menos 10 minutos con el sistema A/C enganchado para que la correa corra

Controle la orientación justa del medidor de tensión y ajuste a las condiciones requeridas del fabricante