

Bill of Materials Listing

TransArctic Canada Inc.

12/7/2021
Page 1 of 1

Product Number	Date	Description		Uof M	Weight	Yield		
Line	Qty	Component Prod#	Rev#	Description	Bin	Unit		
KMC66562		11/13/2018	1	Mt Kit, 6.7L, TM-55/65, T3RE, '18			766.72	0
5	1	PAC23150		Pack, Carton, 23" x 15" x 10", 51 ECT		each		
10	1	BEL32108		Belt, Banded B gr, 2108mm (83")		each		
30	1	KBB00001		5 Kit, Platform, Transit, ADM, '12		each		
40	1	KCF65010		0 Kit, Comp, TM-55/65, Conversion, '19		each		
50	1	KFB67001		2 Kit, Found'n, BB T3/D3RE, ISB, '13		each		
60	1	KPC67001		1 Kit, Pulley, ISB, T3/D3RE, '12		each		
70	1	KIZ00001		1 Kit, Inst, Relocate PDU, Transit Mts		each		

Bill of Materials Listing

TransArctic Canada Inc.

12/7/2021
Page 1 of 1

Product Number	Date	Description		Uof M	Weight	Yield		
Line	Qty	Component	Prod#	Rev#	Description	Bin	Unit	
KBB00001	6/20/2012	5 Kit, Platform, Transit, ADM, '12					249.33	0
10	1	BMZ01034			2 Bkt, Spring, Support Arm, ADM, '12		each	
20	1	BMZ01035			4 Bkt, Main, Pivot, Ass'y, ADM Transit,'12		each	
30	1	BMZ01037			2 Bkt, Fork, Knuckle-Joint, Adm, '12		each	
40	1	BMZ01038			3 Bkt, Main, Base Pl, ADM, '12		each	
50	1	BMZ01040			0 Bkt, Ass'y, THRD Rod, Isolator, ADM, '12		each	
60	2	BMZ01041			2 Shaft Key, 5/16" SQ x .540" Long		each	
70	2	BMZ01042			1 Vibration Isolator, Bar, 9.63 x 2 x 1.50		each	
80	1	BMZ01044			3 Bkt, Cradle, Pivot, Adm Transit, '12		each	
90	2	BMZ01047			0 Bkt, Bar, Slide Nut, ADJ, Trans ADM, '12		each	
110	1	PIS01010			2 Shaft, Stl, Grease, ADM Transit, '12		each	
120	1	SPR00002			0 Spring, Comp, R/H, 110 x 50 x 8.4, Red		each	
130	1	WFS16001			0 Washer, Flat, Dbl Step, 17mm, 50mm, Plt		each	
140	1	WFS27001			0 Washer, Flat, Dbl Step, 27mm, 63.5, Plt		each	
150	1	KBB00025			5 Bag Kit, Fasteners, KBB00001/2		each	
160	1	KBB00026			4 Bag Kit, Fasteners, Assembly, KBB00001/2		each	

NOTE:

Use Blue "Loctite" on the (4) fasteners to fasten BMZ01034 in place.
 1/2 -13 UNC grd. 8 bolts, c/w L'whrs torque... used on the PIS01010 Shaft
 = 45 FT*LBS. (VTS@ JAN-25-2019)

Bill of Materials Listing

TransArctic Canada Inc.

12/7/2021
Page 1 of 1

Product Number	Date	Description		Uof M	Weight	Yield		
Line	Qty	Component	Prod#	Rev#	Description	Bin	Unit	
KBB00025	8/1/2012	5	Bag Kit, Fasteners, KBB00001/2				1.61	0
10	6	BTQ08126			Bolt, Hex, 1/2-20unf, 1.25", 8, Plt		each	
20	1	BTQ08150			Bolt, Hex, 1/2-13unc, 1.5", 8, Plt		each	
30	1	BTQ10351			Bolt, Hex, 5/8-18unf, 3.5", 8, PLT		each	
50	1	NTQ08000			Nut, Hex, 1/2-13unc, 8, Plt		each	
60	2	NTQ10000			Nut, Hex, 5/8-11unc, 8, Plt		each	
65	1	NTQ10001			Nut, Hex, 5/8-18unf, 8, Plt		each	
100	8	WFQ08000			Washer, Flat, 1/2", 8, Plt		each	
110	2	WFQ10000			Washer, Flat, 5/8", 8, Plt		each	
120	7	WLQ08000			Washer, Lock, 1/2", 8, Plt		each	
130	2	WLQ10000			Washer, Lock, 5/8", 8, Plt		each	

Bill of Materials Listing

TransArctic Canada Inc.

12/7/2021
Page 1 of 1

Product Number	Date	Description			Uof M	Weight	Yield
Line	Qty	Component	Prod#	Rev#	Description	Bin	Unit
KBB00026	8/1/2012	4 Bag Kit, Fasteners, Assembly, KBB00001/2				4.85	0
5	6	BTQ08101			Bolt, Hex, 1/2-20unf, 1.00", 8, Plt		each
15	1	BTQ08100			Bolt, Hex, 1/2-13unc, 1.00", 8, Plt		each
20	8	BTQ08150			Bolt, Hex, 1/2-13unc, 1.5", 8, Plt		each
70	2	WFS08001			Washer, Flat, 1/2", 8, USS, Plt		each
100	6	WFQ08000			Washer, Flat, 1/2", 8, Plt		each
120	16	WLQ08000			Washer, Lock, 1/2", 8, Plt		each
130	4	NTQ08000			Nut, Hex, 1/2-13unc, 8, Plt		each
140	1	BTM08100		0	Bolt, 1/2-13 x 1.0" w/ Grease Nipple FTG		each

Bill of Materials Listing

TransArctic Canada Inc.

12/7/2021
Page 1 of 1

Product Number	Date	Description		Uof M	Weight	Yield	
Line	Qty	Component Prod#	Rev#	Description	Bin	Unit	
KCF65010	8/7/2012		0	Kit, Comp, TM-55/65, Conversion, '19		31.10	0
10	1	BMZ00174	0	Bkt, Adapter, D/S, 4xFC To TM-55/65		each	
30	1	KBF65010	0	Bag Kit, Fasteners, KCF65010		each	

Bill of Materials Listing

TransArctic Canada Inc.

12/7/2021
Page 1 of 1

Product Number	Date	Description		Uof M	Weight	Yield			
Line	Qty	Component	Prod#	Rev#	Description	Bin	Unit	Weight	Yield
KBF65010		9/21/2012		0	Bag Kit, Fasteners, KCF65010			1.04	0
10	3	BTQ08200			Bolt, Hex, 1/2-13unc, 2.0", 8, Plt		each		
20	1	CSF08150			Capscrew, FH, 1/2-13 x 1.50", Alloy, Plt		each		
30	4	CSF12036			Capscrew, FH, 12 x 1.75 x 35mm, 10.9,Plt		each		
40	4	NTQ08000			Nut, Hex, 1/2-13unc, 8, Plt		each		
50	7	WFQ08000			Washer, Flat, 1/2", 8, Plt		each		
60	4	WLQ08000			Washer, Lock, 1/2", 8, Plt		each		

Bill of Materials Listing

TransArctic Canada Inc.

12/3/2021
Page 1 of 1

Product Number	Date	Description		Uof M	Weight	Yield			
Line	Qty	Component	Prod#	Rev#	Description	Bin	Unit		
KFB67001		8/20/2012		2	Kit, Found'n, BB T3/D3RE, ISB, '13			209.73	0
10	1	BFB00001		2	Bkt, Foundation, Main, BB T3/D3RE, '13		each		
20	1	BMZ01083		0	Bkt, FRT, Weldmt, Angle, BB, T3RE, '22		each		
25	1	BMZ01086		0	Bkt, Diag, Brace, BB, T3RE, '22		each		
28	1	PUA05012		0	Pulley, Assy, Idler,B/BX gr,5", STL,Plt		each		
30	1	PUL80074			Pulley, Idler, B/S, Wide, 74d (89102)		each		
40	1	SCD25412		0	Spacer, Col, Drl,25.4mm x 25.4o x 12.3i		each		
45	1	SCD21912		0	Spacer, Col, Drl,21.9mm x 25.4o x 12.3i		each		
50	2	SLV17012		0	Sleeve, Pulley, 16.9o x 22.23mm x 12.32i		each		
60	1	KBB90020		1	Bag Kit, Fasteners, KFB67001		each		

Bill of Materials Listing

TransArctic Canada Inc.

12/3/2021
Page 1 of 1

Product Number	Date	Description	Uof M	Weight	Yield		
Line	Qty	Component Prod#	Rev#	Bin	Unit		
KBB90020	8/20/2012	1	1		Bag Kit, Fasteners, KFB67001	1.84	0
5	1	BTC10035			Bolt, Hex, 10 x 1.5 x 35mm, 10.9, Plt,FT	each	
10	2	BTC12080			Bolt, Hex, 12 x 1.75 x 80mm, 10.9,Plt,FT	each	
20	3	BTQ06150			Bolt, Hex, 3/8-16unc, 1.50", 8, Plt	each	
23	1	BTQ08126			Bolt, Hex, 1/2-20unf, 1.25", 8, Plt	each	
25	4	BTQ08150			Bolt, Hex, 1/2-13unc, 1.5", 8, Plt	each	
30	2	NTA12000			Nut, Hex, 12 x 1.75, 8.8, Plt	each	
35	1	NTA10000			Nut, Hex, 10 x 1.5, 8.8, Plt	each	
40	3	NTP06000			Nut, Hex, 3/8-16unc, 5, Plt	each	
45	4	NTQ08000			Nut, Hex, 1/2-13unc, 8, Plt	each	
50	2	WFA12000			Washer, Flat, 12mm, 8.8, Plt	each	
55	1	WFA10002			Washer, Flat, 10mm, Hvy, 8.8, Plt	each	
60	3	WFN06000			Washer, Flat, 3/8", 2, Plt	each	
65	8	WFQ08000			Washer, Flat, 1/2", 8, Plt	each	
67	3	WFS06004			Washer, Flat, 3/8", Gr. 9, USS, Plt	each	
68	1	WFS08001			Washer, Flat, 1/2", 8, USS, Plt	each	
70	2	WLA12000			Washer, Lock, 12mm, 8.8, Plt	each	
75	1	WLA10000			Washer, Lock, 10mm, 8.8, Plt	each	
77	3	WLP06000			Washer, Lock, 3/8", 5, Plt	each	
80	1	WLQ06000			Washer, Lock, 3/8", 8, Plt	each	
90	5	WLQ08000			Washer, Lock, 1/2", 8, Plt	each	

Bill of Materials Listing

TransArctic Canada Inc.

6/20/2023
Page 1 of 1

Product Number	Date	Description		Uof M	Weight	Yield	
Line	Qty	Component Prod#	Rev#	Description	Location	Unit	
KPC67001	05/13/08		2	Kit, Pulley, ISB, T3/D3RE, '12		18.05	0
10	1	PUL67323	0	Pulley, Crank, ADD-ON, 8.75", ISB, 2B/3V		each	
				4020			
20	4	BTQ07151		Bolt, Hex, 7/16-20unf, 1.5", 8, Plt		each	
				4070			

Bill of Materials Listing

TransArctic Canada Inc.

12/7/2021
Page 1 of 1

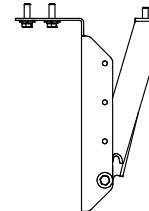
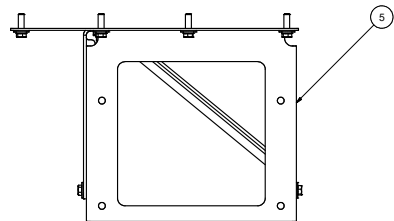
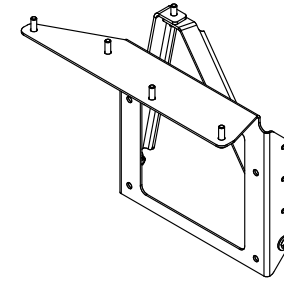
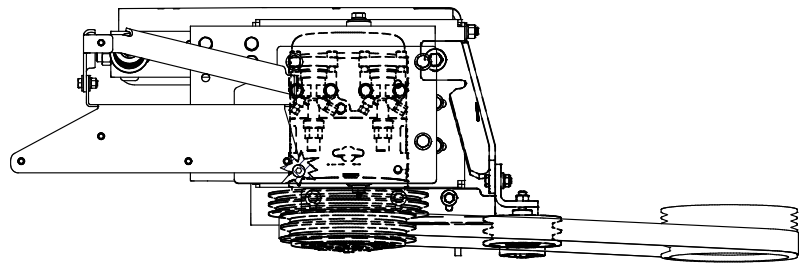
Product Number	Date	Description		Uof M	Weight	Yield	
Line	Qty	Component Prod#	Rev#	Description	Bin	Unit	
KIZ00001	6/11/2014	1	1	Kit, Inst, Relocate PDU, Transit Mts		20.21	0
10	1	BMC67093		1 Bkt, Fuse Panel, Vert., ISB, T3RE		each	
20	1	BMC67094		1 Bkt, Diag, Brace DS, Fuse Panel, T3RE		each	
30	1	BMC67095		0 Bkt, Diag, Brace PS, Fuse Panel, T3RE		each	
40	1	KBZ00001		1 Bag Kit, Fasteners, KIZ00001		each	

Bill of Materials Listing

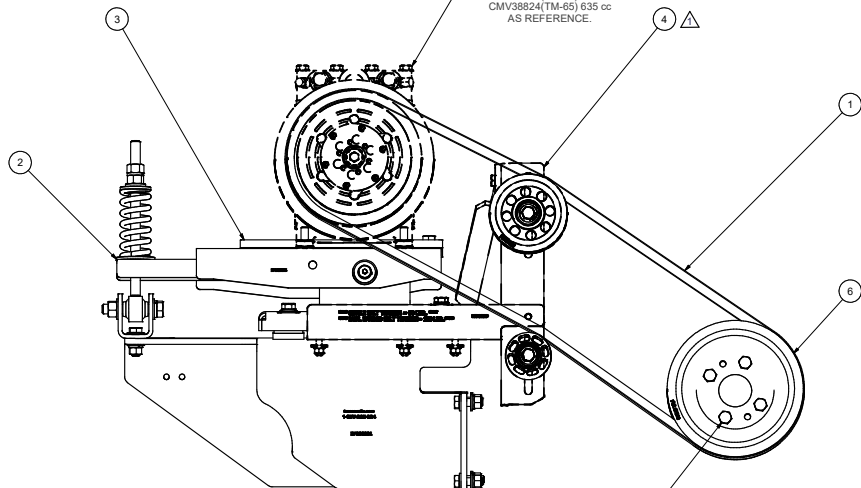
TransArctic Canada Inc.

12/7/2021
Page 1 of 1

Product Number	Date	Description		Uof M	Weight	Yield		
Line	Qty	Component	Prod#	Rev#	Description	Bin	Unit	
KBZ00001	11/7/2014	1	Bag Kit, Fasteners, KIZ00001				0.55	0
10	2	BTQ06100			Bolt, Hex, 3/8-16unc, 1", 8, Plt		each	
20	5	BTQ06125			Bolt, Hex, 3/8-16unc, 1.25", 8, Plt		each	
30	2	NTQ06000			Nut, Hex, 3/8-16unc, 8, Plt		each	
40	9	WFN06000			Washer, Flat, 3/8", 2, Plt		each	
50	7	WLQ06000			Washer, Lock, 3/8", 8, Plt		each	



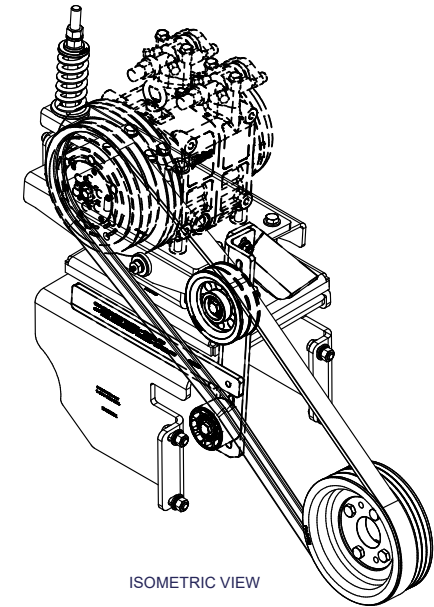
NOTE:
SHOWING TRANSARCTIC
COMPRESSOR PART#
CMV33643 (TM-55) 550cc /
CMV38824 (TM-65) 635 cc
AS REFERENCE.



NOTE:
TORQUE TO: 75-80 FT-LB (ZINC PLATED)
(HEXBOLT CAPSCREW M12 x 1.75 x 40mm)
TIGHTEN IN TWO STEPS IN A CRIS-CROSS
TIGHTENING SEQUENCE PATTERN.

NOTES:

- 1) USE SERVICABLE THREADLOCKER ON ALL FASTENERS TO ENGINE COMPONENTS AND TORQUE **ALL** BOLTS TO S.A.E. SPECIFICATIONS.
- 2) SEE "TRANSARCTIC A/C COMPRESSOR MOUNT INSTALLATION DISCLAIMER".



ISOMETRIC VIEW

ITEM	QTY	U/M	PART NUMBER	DESCRIPTION
6	1	EACH	KPC67001	KIT, PULLEY, ISB, D3RE, '12
5	1	EACH	K1Z00001	KIT, INST, RELOCATE PDU, TRANSIT MTS
4	1	EACH	KCF67001	KIT, FOUND'N, BB D3RE, ISB, '13
3	1	EACH	KCF65010	KIT, COMP, TM-55/65, CONVERSION, '19
2	1	EACH	KBB00001	MT KIT, PLATFORM, TRANSIT, ADM, '12
1	1	EACH	BEL32108	BELT, BANDED B GR, 2108mm (83")

REV		ECN	DESCRIPTION	DATE	BY	APPROVED	DATE	DESCRIPTION
1			REV'D KFB7001	12/7/2011	JAL			
0			RELEASED TO PRODUCTION	11/8/2018	JBR			
					James Stewart		11/8/2018	
					Ron Ingram		11/8/2018	
					Dale Mason		11/8/2018	

DRAWN		jrodriquez		11/8/2018	
CHECKED		Val Jaakowlew		11/8/2018	
RELEASED TO PRODUCTION		James Stewart		11/8/2018	
APPROVED		Dale Mason		11/8/2018	

TRANSARCTIC INC.

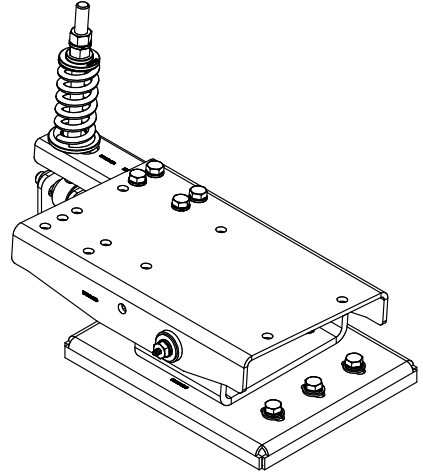
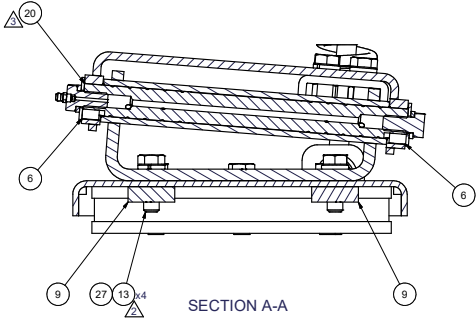
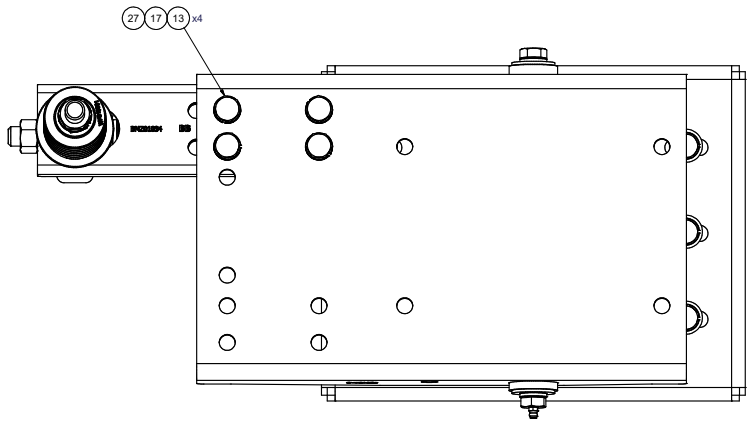
MT KIT, 6.7L, TM-55/65, T3RE, '18

UNSPECIFIED TOLERANCES:	ALL DIMS	FINISH
ONE DECIMAL PLACE (X1)	20	1.000
TWO DECIMAL PLACE (X2)	20	1.000
THREE DECIMAL PLACE (X3)	20	1.000
FRACTIONAL (X1/16)	ANSI & AS	

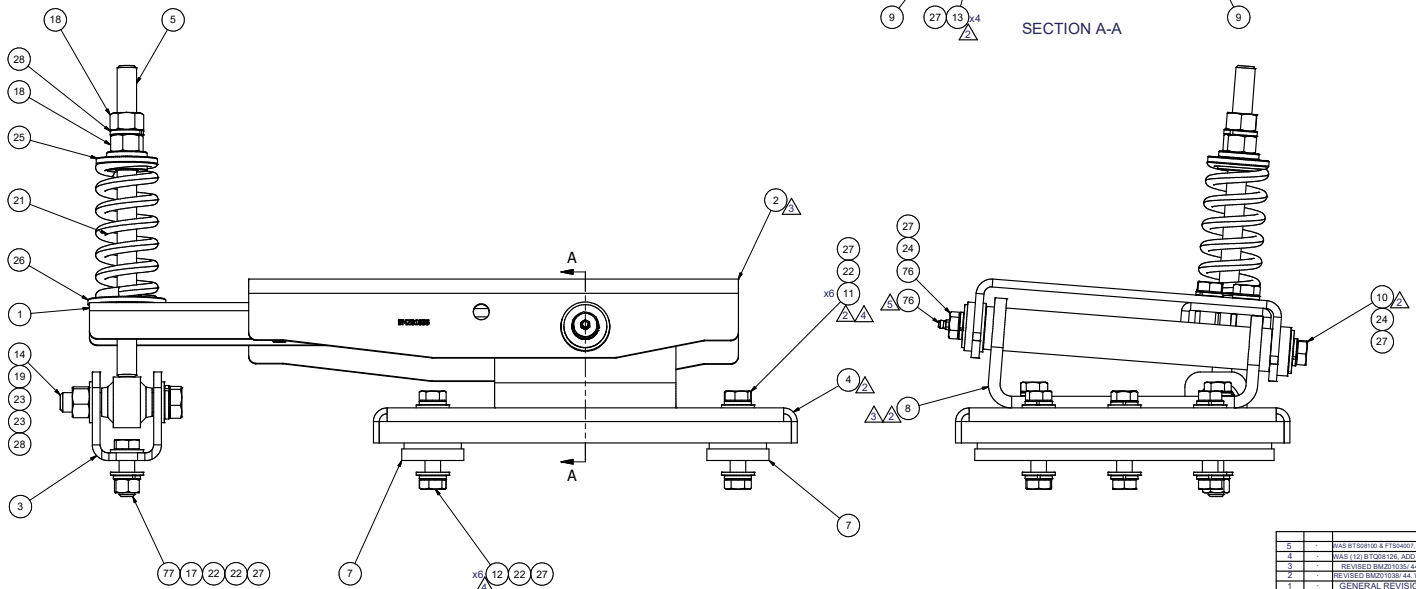


DRAWING UNIT OF MEASURE	MM (INCH)	SCALE	1:4
SIZE	D	DWG NO	KMC66562
SHEET	1	OF	1

8 7 6 5 4 3 2 1



ISOMETRIC VIEW
SCALE 1/3



77	1	EACH	100007	BOLT, HEX, 1/2-13UNC x 1.50, 8, PLT
28	2	EACH	WLO10000	WASHER, LOCK, 5/8", 8, PLT
27	23	EACH	WLO08000	WASHER, LOCK, 1/2", 8, PLT
26	1	EACH	WFS27001	WASHER, FLAT, DBL STEP, 28mm, 63.5, PLT
25	1	EACH	WFS16001	WASHER, FLAT, DBL STEP, 16mm, 50mm, PLT
24	2	EACH	WFS08001	WASHER, FLAT, 1/2", 8, USS, PLT
23	2	EACH	WFO10000	WASHER, FLAT, 5/8", 8, PLT
22	14	EACH	WFO08000	WASHER, FLAT, 1/2", 8, PLT
21	1	EACH	SPR00002	SPRING, COMP, R/H, 110 x 50 x 8.4, RED
20	1	EACH	PTS01010	SHAFT, STL, GREASE, ADM TRANSIT, '12
19	1	EACH	NTQ10001	NUT, HEX, 5/8-18UNF, 8, PLT
18	2	EACH	NTQ10000	NUT, HEX, 5/8-11UNC, 8, PLT
17	5	EACH	NTQ08000	NUT, HEX, 1/2-13UNC, 8, PLT
14	1	EACH	BTQ10351	BOLT, HEX, 5/8-18UNF x 3.50, 8, PLT
13	8	EACH	BTQ08150	BOLT, HEX, 1/2-13UNC x 1.50, 8, PLT
12	6	EACH	BTQ08126	BOLT, HEX, 1/2-20UNF x 1.25, 8, PLT
11	6	EACH	BTQ08101	BOLT, HEX, 1/2-20UNF x 1.00, 8, PLT
10	1	EACH	BTQ08100	BOLT, HEX, 1/2-13UNC x 1.00, 8, PLT
76	1	EACH	BTM08100	BOLT, 1/2-13 x 1.0" w/ GREASE NIPPLE FTG
9	2	EACH	BMZ01047	BKT, BAR, SLIDE NUT, ADJ, TRANS ADM, '12
8	1	EACH	BMZ01044	BKT, ASSY, CRADLE PIVOT, ADM TRANSIT, '12
7	2	EACH	BMZ01042	VIBRATION ISOLATOR, BAR, 9.63 x 2 x 1.50
6	2	EACH	BMZ01041	Shaft Key, 5/16" SQ x .540" Long
5	1	EACH	BMZ01040	BKT, ASSY, THRD ROD, ISOLATOR, ADM, '12
4	1	EACH	BMZ01038	BKT, MAIN, BASE PL, ADM, '12
3	1	EACH	BMZ01037	BKT, FORK, KNUCKLE-JOINT, ADM, '12
2	1	EACH	BMZ01035	BKT, MAIN, PIVOT, ASSY, ADM TRANSIT, '12
1	1	EACH	BMZ01034	BKT, SPRING, SUPPORT ARM, ADM, '12

ITEM	QTY	U/M	PART NUMBER	DESCRIPTION
77	1	EACH	100007	BOLT, HEX, 1/2-13UNC x 1.50, 8, PLT
28	2	EACH	WLO10000	WASHER, LOCK, 5/8", 8, PLT
27	23	EACH	WLO08000	WASHER, LOCK, 1/2", 8, PLT
26	1	EACH	WFS27001	WASHER, FLAT, DBL STEP, 28mm, 63.5, PLT
25	1	EACH	WFS16001	WASHER, FLAT, DBL STEP, 16mm, 50mm, PLT
24	2	EACH	WFS08001	WASHER, FLAT, 1/2", 8, USS, PLT
23	2	EACH	WFO10000	WASHER, FLAT, 5/8", 8, PLT
22	14	EACH	WFO08000	WASHER, FLAT, 1/2", 8, PLT
21	1	EACH	SPR00002	SPRING, COMP, R/H, 110 x 50 x 8.4, RED
20	1	EACH	PTS01010	SHAFT, STL, GREASE, ADM TRANSIT, '12
19	1	EACH	NTQ10001	NUT, HEX, 5/8-18UNF, 8, PLT
18	2	EACH	NTQ10000	NUT, HEX, 5/8-11UNC, 8, PLT
17	5	EACH	NTQ08000	NUT, HEX, 1/2-13UNC, 8, PLT
14	1	EACH	BTQ10351	BOLT, HEX, 5/8-18UNF x 3.50, 8, PLT
13	8	EACH	BTQ08150	BOLT, HEX, 1/2-13UNC x 1.50, 8, PLT
12	6	EACH	BTQ08126	BOLT, HEX, 1/2-20UNF x 1.25, 8, PLT
11	6	EACH	BTQ08101	BOLT, HEX, 1/2-20UNF x 1.00, 8, PLT
10	1	EACH	BTQ08100	BOLT, HEX, 1/2-13UNC x 1.00, 8, PLT
76	1	EACH	BTM08100	BOLT, 1/2-13 x 1.0" w/ GREASE NIPPLE FTG
9	2	EACH	BMZ01047	BKT, BAR, SLIDE NUT, ADJ, TRANS ADM, '12
8	1	EACH	BMZ01044	BKT, ASSY, CRADLE PIVOT, ADM TRANSIT, '12
7	2	EACH	BMZ01042	VIBRATION ISOLATOR, BAR, 9.63 x 2 x 1.50
6	2	EACH	BMZ01041	Shaft Key, 5/16" SQ x .540" Long
5	1	EACH	BMZ01040	BKT, ASSY, THRD ROD, ISOLATOR, ADM, '12
4	1	EACH	BMZ01038	BKT, MAIN, BASE PL, ADM, '12
3	1	EACH	BMZ01037	BKT, FORK, KNUCKLE-JOINT, ADM, '12
2	1	EACH	BMZ01035	BKT, MAIN, PIVOT, ASSY, ADM TRANSIT, '12
1	1	EACH	BMZ01034	BKT, SPRING, SUPPORT ARM, ADM, '12

5	DATE: 3/15/2018	BY: JRR
4	DATE: 1/12/2016	BY: JRR
3	DATE: 10/11/2012	BY: JRR
2	DATE: 8/10/2012	BY: JRR
1	DATE: 8/30/2012	BY: JRR
0	DATE: 7/5/2012	BY: JRR

NOTES:
1) USE SERVICABLE THREADLOCKER ON ALL FASTENERS TO ENGINE COMPONENTS AND TORQUE ALL BOLTS TO S.A.E. SPECIFICATIONS.
2) SEE "TRANSARCTIC A/C COMPRESSOR MOUNT INSTALLATION DISCLAIMER".

BILL OF MATERIALS
TRANSARCTIC INC.

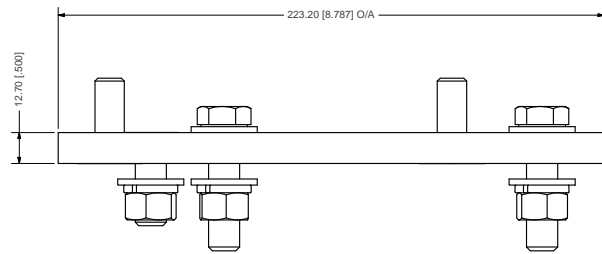
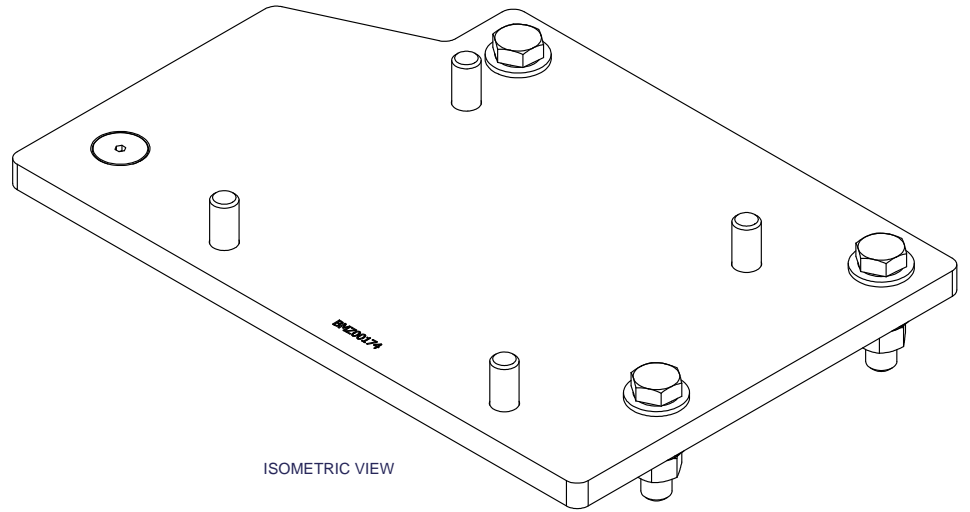
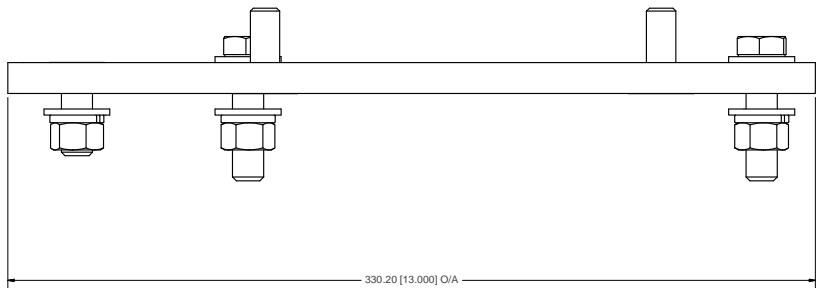
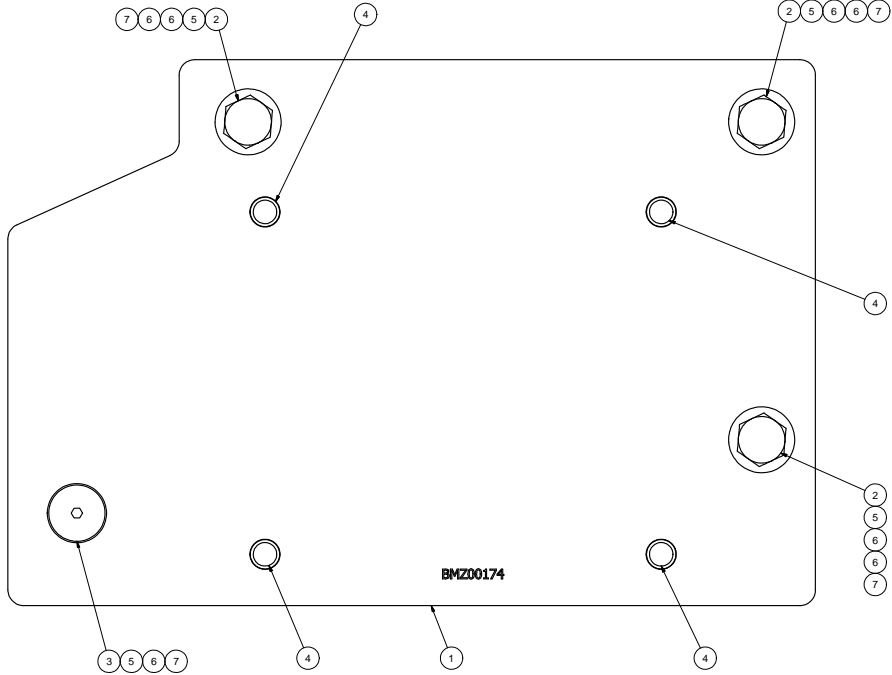
MT KIT, PLATFORM, TRANSIT, ADM, '12

UNSPECIFIED TOLERANCES:	ALL DIMS	FINISH
ONE DECIMAL PLACE (X1)	25	100
TWO DECIMAL PLACE (X2)	10	50
THREE DECIMAL PLACE (X3)	5	25
FRACTIONAL (X1/16)	AS SHOWN	AS SHOWN



DRAWING UNIT OF MEASURE: MM (INCH) SCALE: 1:2 SHEET 1 OF 1

8 7 6 5 4 3 2 1



ITEM	QTY	U/M	PART NUMBER	DESCRIPTION
7	4	EACH	WLO08000	WASHER, LOCK, 1/2", 8, PLT
6	7	EACH	WFO08000	WASHER, FLAT, 1/2", 8, PLT
5	4	EACH	NTQ08000	NUT, HEX, 1/2-13UNC, 8, PLT
4	4	EACH	CSF12036	CAPSCREW, FH, 12 x 1.75 x 35mm, 10.9, PLT
3	1	EACH	CSF08150	CAPSCREW, FH, 3/8-16 x 1.5", 9, PLT
2	3	EACH	BTQ08200	BOLT, HEX, 1/2-13UNC x 2.00, 9, PLT
1	1	EACH	BMZ00174	BKT. PL. TM-55/65, HDX. INTERFACE, 50"

TRANSARGTIG INC.

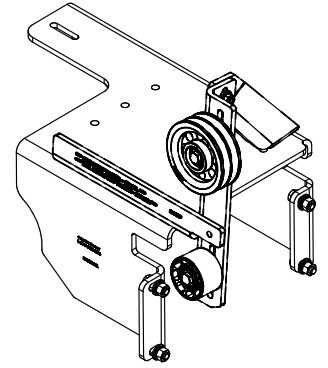
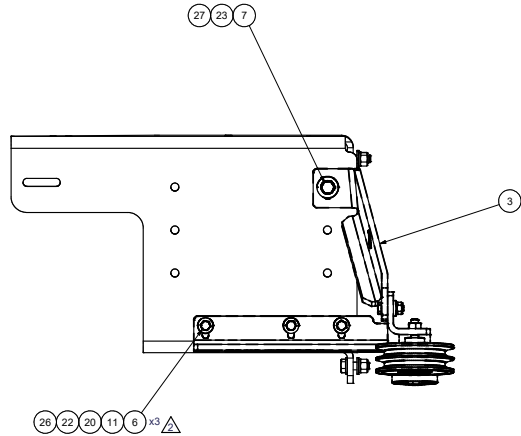
REV	DESCRIPTION	DATE	BY
0	RELEASED TO PRODUCTION	1/3/2019	JRR
1			Val Jakowlew
2			James Stewart
3			MFG
4			James Stewart
5			APPROVED
6			Date Mason

DRAWN		DATE	TITLE
jrodriquez		1/3/2019	
CHECKED			
Val Jakowlew		1/3/2019	
DATE			
James Stewart		1/3/2019	
APPROVED			
Date Mason		1/3/2019	
DRAWING UNIT OF MEASURE		MM [INCH]	
SCALE		1:1	
DWG NO			REV
D			0
KCF65010			
SHEET		1	OF 1

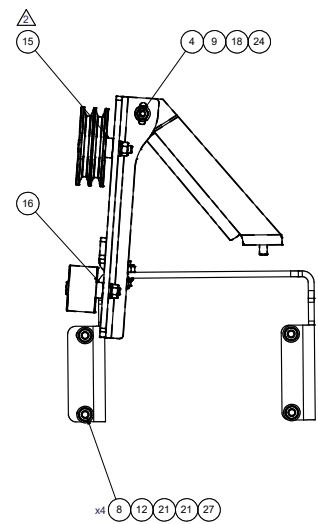
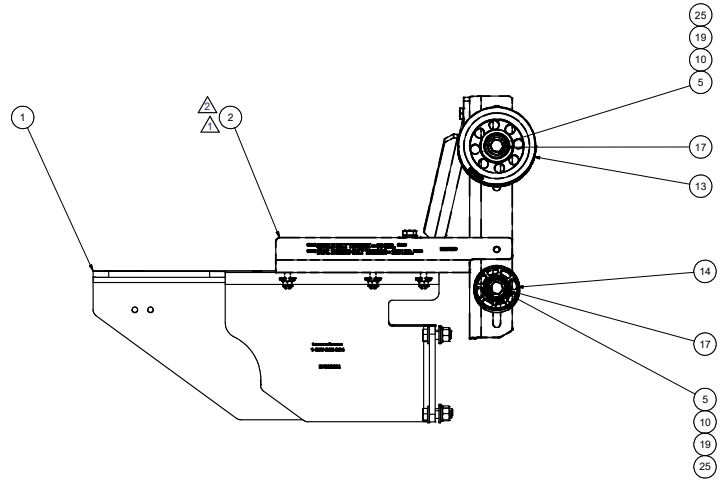
UNSPECIFIED TOLERANCES: ALL DIMS IN MM
 ONE DECIMAL PLACE (X1) .10 (3RD)
 TWO DECIMAL PLACES (X2) .02 (2ND)
 THREE DECIMAL PLACES (X3) .01 (2ND)
 FRACTIONAL (X1/16) .001 (2ND)
 ANGULAR ± .25°



THIRD ANGLE PROJECTION



ISOMETRIC VIEW



NOTES:
 1) USE SERVICABLE THREADLOCKER ON ALL FASTENERS TO ENGINE COMPONENTS AND TORQUE ALL BOLTS TO S.A.E. SPECIFICATIONS.
 2) SEE "TRANSARC TIC A/C COMPRESSOR MOUNT INSTALLATION DISCLAIMER".

27	5	EACH	WLO08000	WASHER, LOCK, 1/2", 8, PLT
26	3	EACH	WLP06000	WASHER, LOCK, 3/8", 5, PLT
25	2	EACH	WLA12000	WASHER, LOCK, 12mm, 8.8, PLT
24	1	EACH	WLA10000	WASHER, LOCK, 10mm, 8.8, PLT
23	1	EACH	WFS08001	WASHER, FLAT, 1/2", 8, USS, PLT
22	3	EACH	WFS06004	Washer, Flat, 3/8", Gr. 9, USS, PIT
21	8	EACH	WFO08000	WASHER, FLAT, 1/2", 8, PLT
20	3	EACH	WFO06000	WASHER, FLAT, 3/8", 2, PLT
19	2	EACH	WFA12000	WASHER, FLAT, 12mm, 8.8, PLT
18	1	EACH	WFA10002	WASHER, FLAT, 10mm, HWY, 8.8, PLT
17	2	EACH	SLV17012	SLEEVE, PULLEY, 16.9x x 22.23 mm x12.19l
16	1	EACH	SCD25412	SPACER, COL, DRL, 25.4mm x 25.4x x 12.3l
15	1	EACH	SCD21912	SPACER, COL, DRL, 21.9mm x 31.8x x 12.3l
14	1	EACH	PUL80074	PULLEY, IDLER, BACKSIDE, P8, 74D, 46.27W
13	1	EACH	PUA05012	PULLEY, ASSY, IDLER, B/BX gr, 5" STL, PLT
12	4	EACH	NTQ08000	NUT, HEX, 1/2-13UNC, 8, PLT
11	3	EACH	NTP06000	NUT, HEX, 3/8-16UNC, 5, PLT
10	2	EACH	NTA12000	NUT, HEX, 12 x 1.75, 8.8, PLT
9	1	EACH	NTA10000	NUT, HEX, 10 x 1.5, 8.8, PLT
8	4	EACH	BTQ08150	BOLT, HEX, 1/2-13UNC x 1.50, 8, PLT
7	1	EACH	BTQ08126	BOLT, HEX, 1/2-20UNC x 1.25, 8, PLT
6	3	EACH	BTQ06150	BOLT, HEX, 3/8-16UNC, 1.50", 8, PLT
5	4	EACH	BTC12080	BOLT, HEX, 12 x 1.75 x 80mm, 10.9, PLT, FT
4	1	EACH	BTC10035	BOLT, HEX, 10 x 1.5 x 35mm, 10.9, PLT
3	1	EACH	BMZ01086	BKT, DIAG, BRACE, BB, T3RE, '22
2	1	EACH	BMZ01083	BKT, FRT, ANGLE, WELDMT, BB, T3RE, '22
1	1	EACH	BFB00001	BKT, FOUNDATION, MAIN, BB D3RE, '13
ITEM	QTY	U/M	PART NUMBER	DESCRIPTION



REV	ECN	DESCRIPTION	DATE	BY
2		MAK P/N (BMS1086 & P/N)S UPDATED	12/01/2021	JAL
1		REVISION FOR BROWNING	05/20/2012	JRR
0		RELEASED TO PRODUCTION	8/20/2012	JRR

UNSPECIFIED TOLERANCES: ALL DIMS
 ONE DECIMAL PLACE (X1) .10 INCH
 TWO DECIMAL PLACE (X2) .01 INCH
 THREE DECIMAL PLACE (X3) .005 INCH
 FRACTIONAL (X1/16) AS SHOWN

DRAWN: jrodriguez 8/20/2012
 CHECKED: Val Jakowlew 8/20/2012
 BY: James Stewart 8/20/2012
 APPROVED: Ron Ingram 8/20/2012
 Dale Mason 8/20/2012

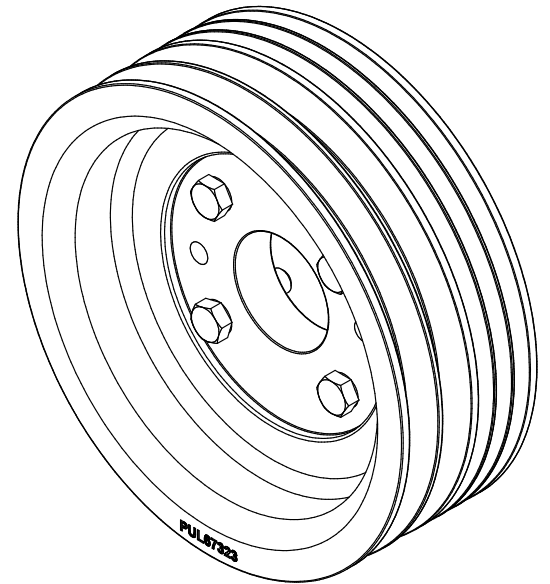
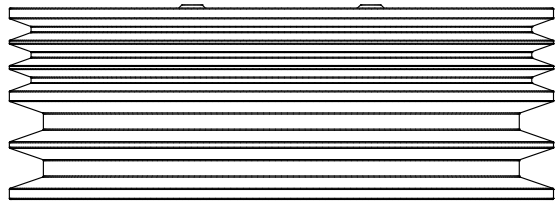
TRANSARC TIC INC.

TITLE: KIT, FOUND'N, BB D3RE, ISB, '13

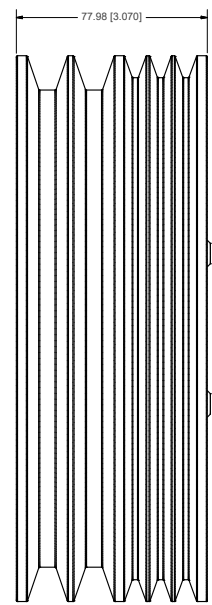
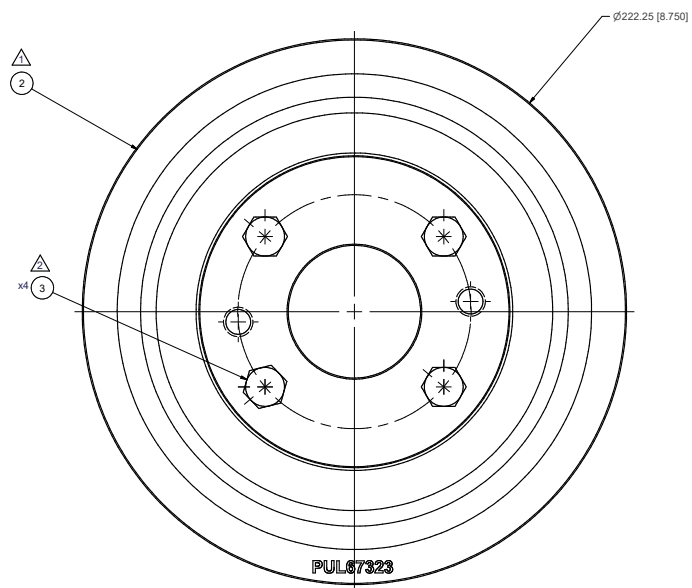
SIZE: DWG NO: KFB67001 REV: 2

DWG UNIT OF MEASURE: MM (INCH) SCALE: 1:4 SHEET 1 OF 1





ISOMETRIC VIEW



NOTES:
 1) USE SERVICABLE THREADLOCKER ON ALL FASTENERS TO ENGINE COMPONENTS AND TORQUE **ALL** BOLTS TO S.A.E. SPECIFICATIONS.
 2) SEE "TRANSARCTIC A/C COMPRESSOR MOUNT INSTALLATION DISCLAIMER".

ITEM	QTY	U/M	PART NUMBER	DESCRIPTION
3	4	EACH	BTQ07151	BOLT, HEX, 7/16-20UNF, 1.5", 8, PLT
2	1	EACH	PUL67323	PULLEY, CRANK, ADD-ON, COMBO, ISB, 2B/3V

DRAWN		DATE		CHECKED		DATE	
jrodriguez		09/14/12		Val Jakowlew		09/14/12	

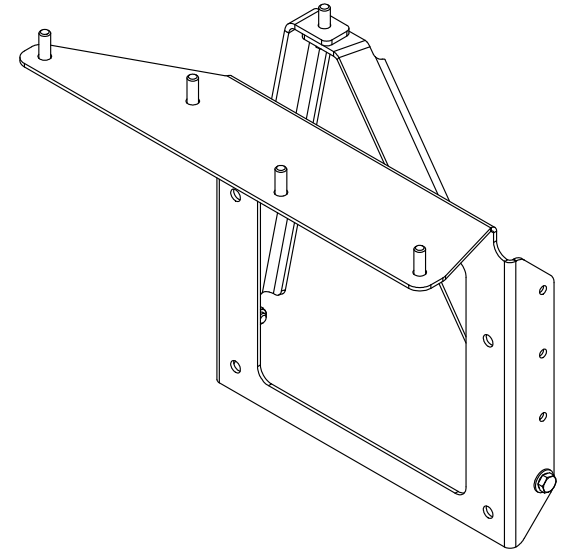
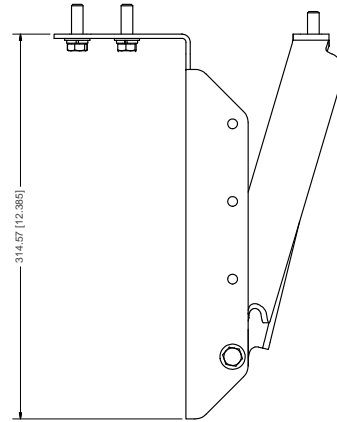
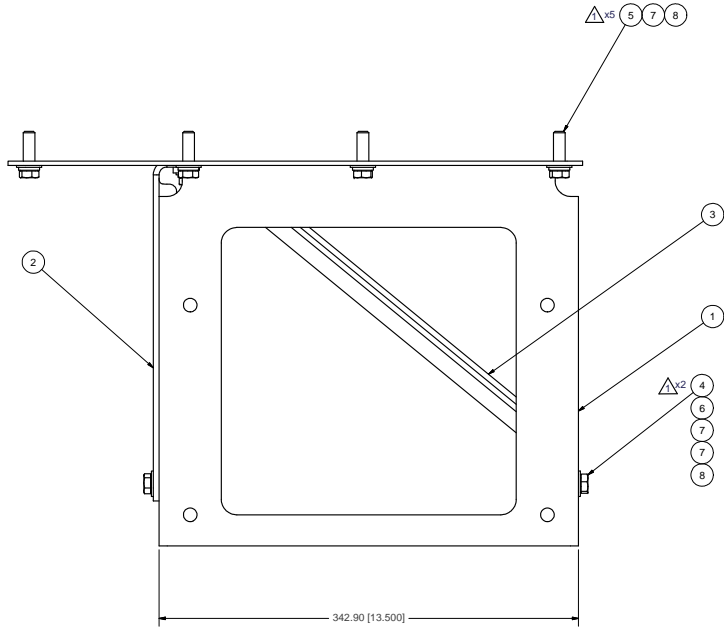
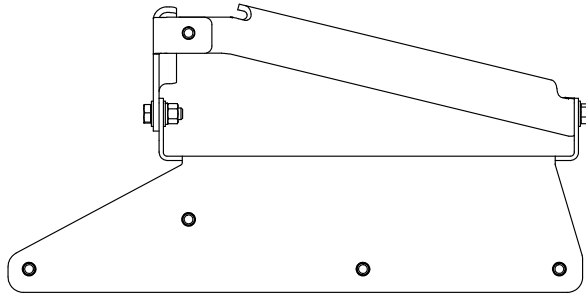
REV	ECN	DESCRIPTION	DATE	BY
2		WAS BTQ2040	01/25/23	VAL JAKOWLEW
1		WAS PUL67322	07/17/12	JRR
0		RELEASED TO PRODUCTION	07/14/2012	JRR

APPROVED	DATE	BY
Dale Mason	09/14/12	James Stewart

UNSPECIFIED TOLERANCES:		ALL DIMS	FINISH
ONE DECIMAL PLACE (.X)	MM	± .010	AS SHOWN
TWO DECIMAL PLACE (.XX)	MM	± .005	AS SHOWN
THREE DECIMAL PLACE (.XXX)	MM	± .002	AS SHOWN
FRACTIONAL (X/16)	INCHES	± .005	AS SHOWN

BILL OF MATERIALS		TITLE	
DRAWING UNIT OF MEASURE: MM (INCH)		KIT, PULLEY, ISB, D3RE, '12	
SCALE: 1:1	SIZE: D	DWG NO: KPC67001	
SHEET 1 OF 1		REV 2	





ISOMETRIC VIEW

- NOTES:
- 1) USE SERVICABLE THREADLOCKER ON ALL FASTENERS TO ENGINE COMPONENTS AND TORQUE **ALL** BOLTS TO S.A.E. SPECIFICATIONS.
 - 2) SEE "TRANSARCTIC A/C COMPRESSOR MOUNT INSTALLATION DISCLAIMER".

ITEM	QTY	U/M	PART NUMBER	DESCRIPTION
8	7	EACH	WLO06000	WASHER, LOCK, 3/8", 8, PLT
7	9	EACH	WFO06000	WASHER, FLAT, 3/8", 2, PLT
6	2	EACH	NTQ06000	NUT, HEX, 3/8-16UNC, 8, PLT
5	5	EACH	BTQ06125	BOLT, HEX, 3/8-16UNC x 1.25, 8, PLT
4	2	EACH	BTQ06100	BOLT, HEX, 3/8-16UNC, 1", 8, PLT
3	1	EACH	BMC67095	BKT, DIAG, BRACE PS, FUSE PANEL, T3RE
2	1	EACH	BMC67094	BKT, DIAG, BRACE DS, FUSE PANEL, T3RE
1	1	EACH	BMC67093	BKT, FUSE PANEL, VERT., ISB, T3RE

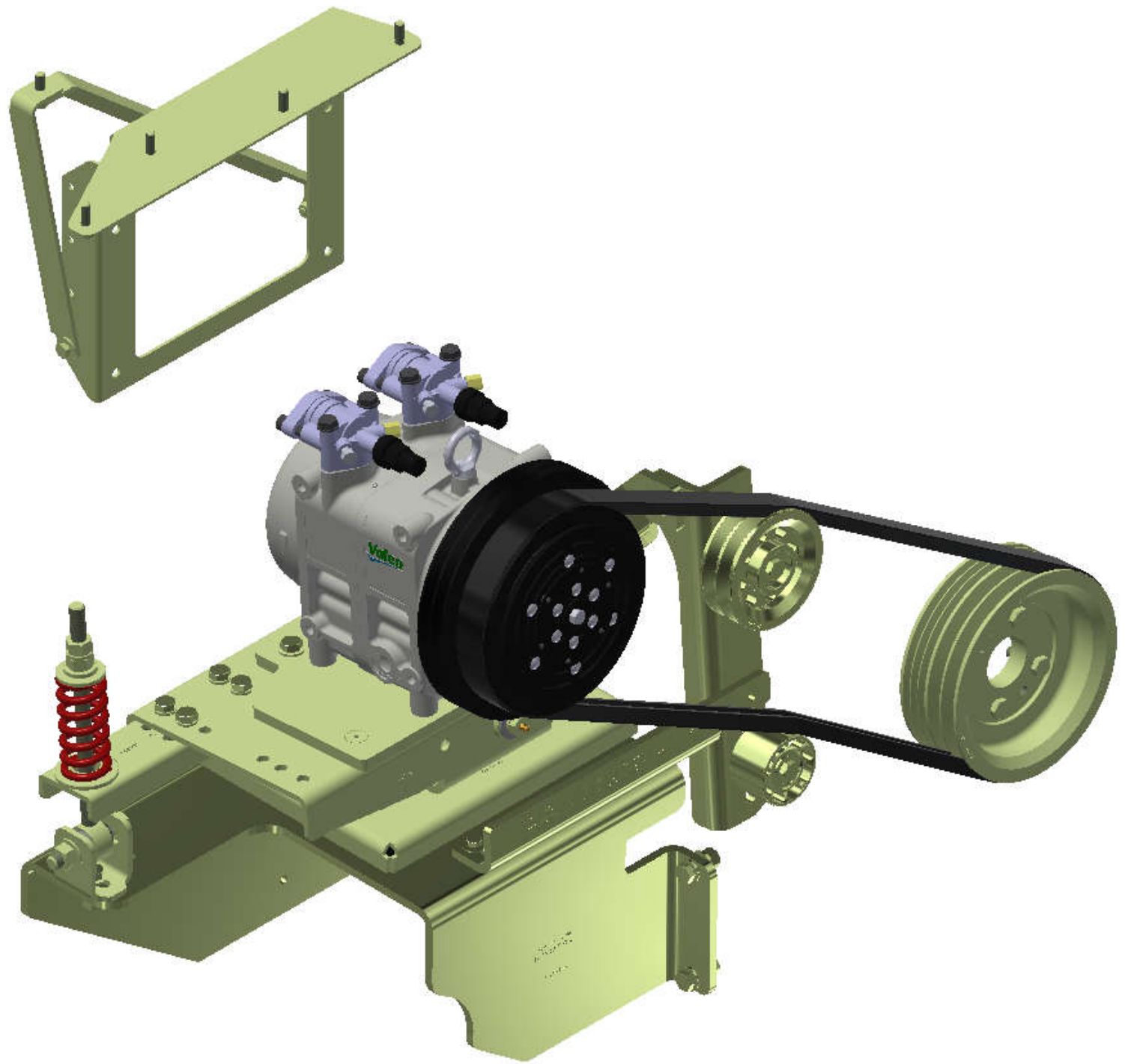
TRANSARCTIC INC.

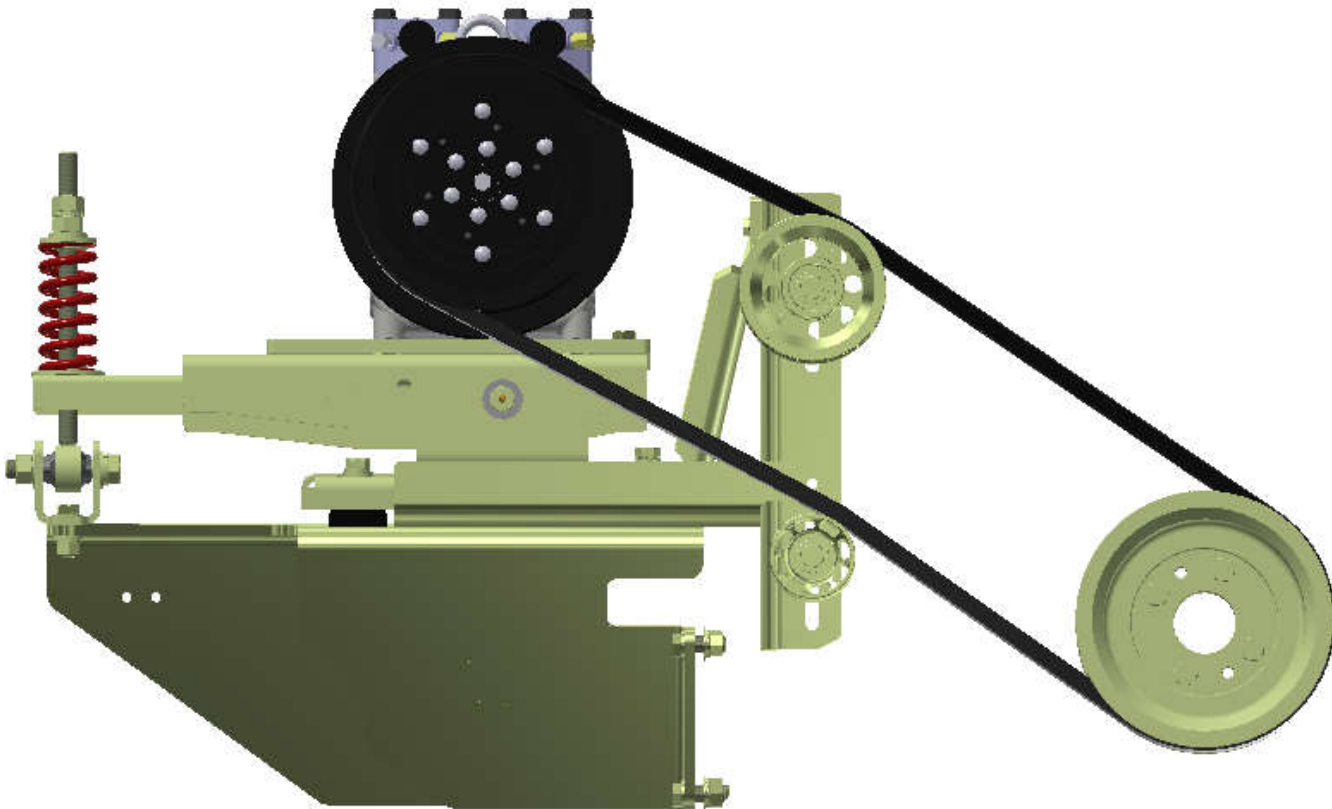
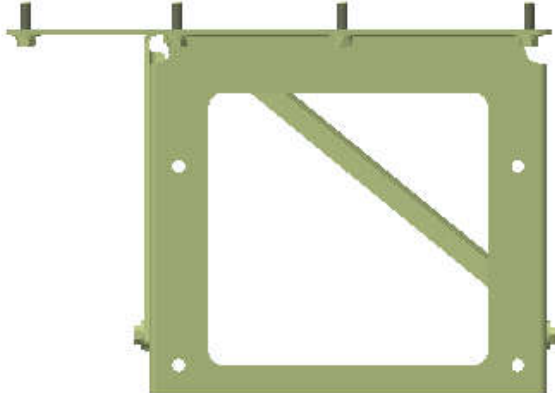
1	WAS METRIC FASTENERS	3/1/2016	JRR	
2	RELEASED TO PRODUCTION	11/7/2014	JRR	
REV	ECN	DESCRIPTION	DATE	BY
			11/7/2014	Vaj Jakovlew
			11/7/2014	James Stewart
			11/7/2014	Ron Ingram
			11/7/2014	Dale Mason

THIS DRAWING CONTAINS PROPRIETARY CONFIDENTIAL INFORMATION OWNED BY TRANSARCTIC CANADA INC. THE DOCUMENT AND THE INFORMATION IN IT ARE NOT TO BE USED, DISCLOSED OR REPRODUCED WITHOUT EXPRESS WRITTEN PERMISSION OF THE COMPANY.

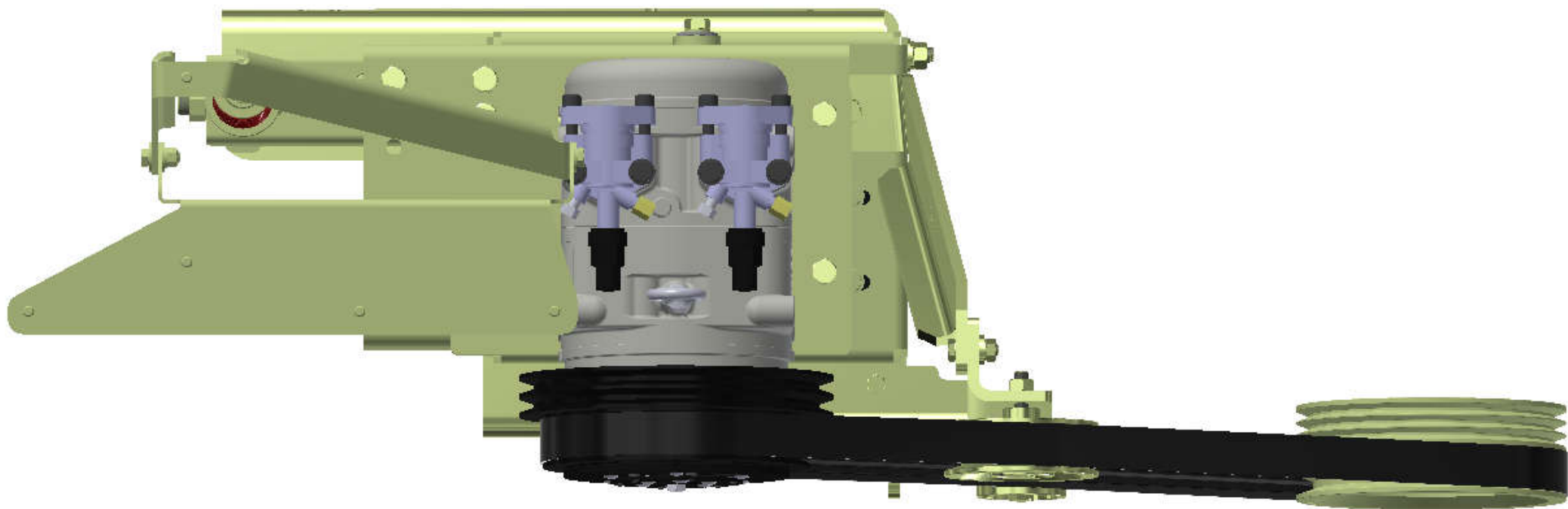
UNSPECIFIED TOLERANCES:		MM (INCH)
ONE DECIMAL PLACE (X0.1)	0.10 (0.004)	THIRD ANGLE PROJECTION
TWO DECIMAL PLACE (X0.01)	0.02 (0.0008)	
THREE DECIMAL PLACE (X0.001)	0.002 (0.00008)	

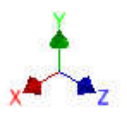
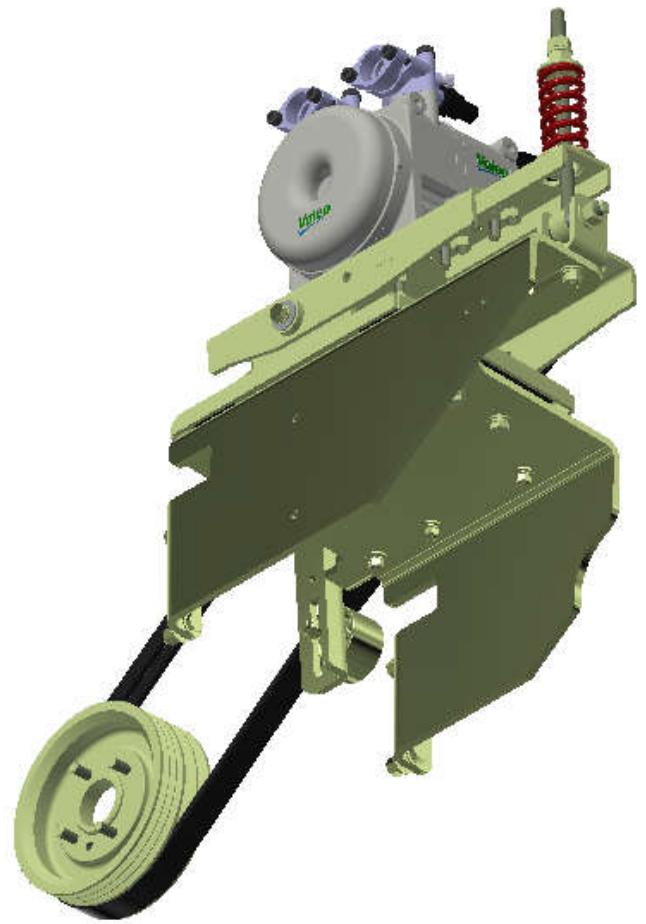
TITLE	KIT, INST, RELOCATE PDU, TRANSIT MTS	SIZE	DWG NO	REV
DATE	11/7/2014	SCALE	KIZ00001	1
DRAWING UNIT OF MEASURE	MM (INCH)	SCALE	1:2	SHEET 1 OF 1











TransArctic A/C Compressor Mount Installation Disclaimer

All compressor mounts should be installed by qualified and trained personnel using proper tools and equipment in safe working conditions following industry standard guidelines for motor vehicle service and repair.

The installer of any compressor mount purchased from TransArctic must undertake all responsibility of issues arising from that compressor bracket being installed on any vehicle. As well as insure that a **proper and sufficient ground** is established between the compressors' clutches and the vehicle's engine. Mount functionality, operation and durability can all be compromised by an incompetent installation.

Due to the many different situations, parameters and application criteria, which are beyond the compressor mount manufacturer's control, TransArctic does not warrant design, durability, or operational functionality of any compressor mount improperly installed by another party.

With no implied guarantees it is the mount installer's strict responsibility to determine safety and functionality, of the compressor mount, at the time of installation.

Please contact TransArctic with any issue arising from installation so we may better improve the product. If you have any reservations about the compressor mount integrity contact TransArctic immediately at 1-877-COLD-AIR.

Mark OEM tensioner location

Install Kit

Check for Interferences

Check to ensure that the proper OEM tensioner orientation is maintained

Run engine with A/C system engaged for at least 10 minutes to run in belt

Check OEM tensioner orientation and adjust as required

Responsabilidad limitada de TransArctic en la instalación del soporte del compresor

Todos los soportes de los compresores deben ser instalados por personas calificadas y entrenadas, usando para ello los equipos y herramientas necesarios para esta labor en buenas condiciones y según las normas y guías para el servicio y/o reparación de motores de vehículos.

El instalador de los soportes comprados en TransArctic asume toda la responsabilidad de cualquier problema que surja en el soporte del compresor al vehículo; de igual manera es responsable que el cable a tierra sea conectado entre el embrague del compresor y el motor del vehículo.

Se advierte que el buen funcionamiento y la durabilidad del soporte pueden ser comprometidos por defectos en su instalación.

Debido a las diversas situaciones que se puedan presentar fuera del control del fabricante, TransArctic no garantiza el diseño, la durabilidad o el correcto funcionamiento de cualquier equipo inapropiadamente instalado por terceros.

Esta sobreentendido que el Instalador del montaje del compresor es estrictamente responsable de la seguridad y funcionamiento del equipo en el momento de la instalación.

Si tuviera algún problema o duda acerca de la instalación del soporte del compresor pongase en contacto inmediatamente con TransArctic al teléfono 1-877-COLD-AIR de modo que podamos mejorar nuestro producto.

Note la ubicación del medidor de tensión OEM

Instale el equipo

Controlar si hay interferencias.

Asegurese que el medidor de tensión mantenga la orientación justa.

Encienda el motor por lo menos 10 minutos con el sistema A/C enganchado para que la correa corra

Controle la orientación justa del medidor de tensión y ajuste a las condiciones requeridas del fabricante