

# Bill of Materials Listing

TransArctic Canada Inc.

6/6/2006

Page 1 of 1

| Product Number  |                 | Description                               | Bin | Date              | Weight       | Uof M | Yield    |
|-----------------|-----------------|---|-----|-------------------|--------------|-------|----------|
| Line            | Component Prod# | Description                               |     | Unit              | Qty          |       |          |
| <b>KMK72051</b> |                 | <b>Mt Kit, C7, A3FE, 2 TM-16, P4</b>      |     | <b>10/12/2003</b> | <b>75.28</b> |       | <b>0</b> |
| 10              | BEL41130        | Belt, 4gr, 1130mm (44.5") (5040445)       |     | each              | 1            |       |          |
| 20              | BEL41143        | Belt, 4gr, 1143mm (45.0") (5040450)       |     | each              | 1            |       |          |
| 30              | BMK70006        | Bkt, Main, Weldmt, C7, A3FE, D/S, P4      |     | each              | 1            |       |          |
| 40              | BMK70007        | Bkt, Main, Assy, C7, A3FE, P/S, P4        |     | each              | 1            |       |          |
| 50              | BMS60005        | Bkt, Cradle, Front, TM-16, 3126, U/S, P4  |     | each              | 2            |       |          |
| 60              | BMS60006        | Bkt, Cradle, Rear, TM-16, 3126, U/S, P4   |     | each              | 2            |       |          |
| 65              | PUL71008        | Pulley, Crank, C7, P8, 8" dia, .5"        |     | each              | 1            |       |          |
| 70              | FSP59286        | Spacer, Fan, Pulley, ISB, 28.6mm (1.13")  |     | each              | 1            |       |          |
| 80              | SPC28610        | Spacer, Col, Drl, 28.6mm x 25.4o x 10.3i  |     | each              | 2            |       |          |
| 85              | BMK70026        | Bkt, Spacer, Pl, C7, 12" Damper, 3/16"Thk |     | each              | 1            |       |          |
| 90              | TEN40002        | Tenr, Mini, Assy, Spring, BkSide, CCW     |     | each              | 2            |       |          |
| 100             | BAK72051        | Bag Kit, Fasteners, KMK72051              |     | each              | 1            |       |          |

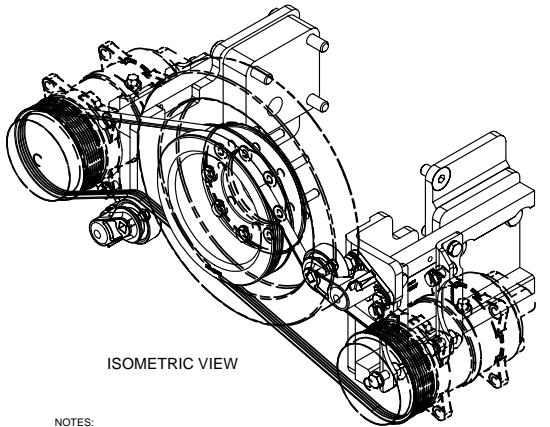
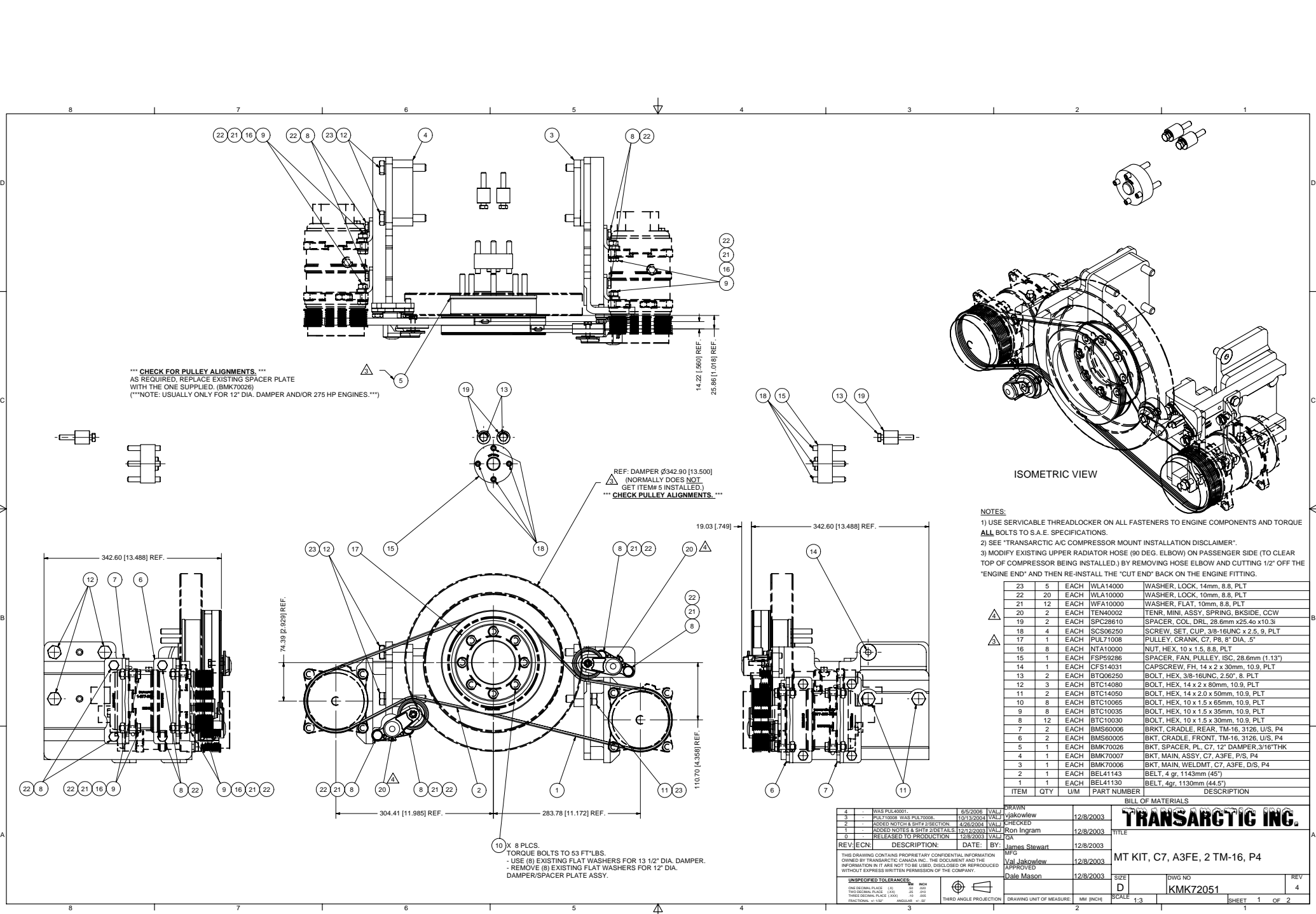
# Bill of Materials Listing

TransArctic Canada Inc.

5/20/2005

Page 1 of 1

| Product Number  |                 | Description                           | Bin | Date             | Weight      | Uof M | Yield    |
|-----------------|-----------------|---------------------------------------|-----|------------------|-------------|-------|----------|
| Line            | Component Prod# | Description                           |     | Unit             | Qty         |       |          |
| <b>BAK72051</b> |                 | <b>Bag Kit, Fasteners, KMK72051</b>   |     | <b>9/13/2003</b> | <b>4.09</b> |       | <b>0</b> |
| 10              | CSF14031        | Capscrew, FH, 14 x 2 x 30mm, 10.9,Plt |     | each             | 1           |       |          |
| 20              | SCS06250        | Screw, Set, Cup, 3/8-16 x 2.5, 9, Plt |     | each             | 4           |       |          |
| 30              | BTC14080        | Bolt, Hex, 14 x 2 x 80mm, 10.9, Plt   |     | each             | 3           |       |          |
| 40              | BTC14050        | Bolt, Hex, 14 x 2 x 50mm, 10.9, Plt   |     | each             | 2           |       |          |
| 50              | BTC10060        | Bolt, Hex, 10 x 1.5 x 60mm, 10.9, Plt |     | each             | 8           |       |          |
| 60              | BTC10035        | Bolt, Hex, 10 x 1.5 x 35mm, 10.9, Plt |     | each             | 8           |       |          |
| 70              | BTC10030        | Bolt, Hex, 10 x 1.5 x 30mm, 10.9, Plt |     | each             | 12          |       |          |
| 80              | BTQ06250        | Bolt, Hex, 3/8-16unc, 2.50", 8, Plt   |     | each             | 2           |       |          |
| 90              | NTA10000        | Nut, Hex, 10 x 1.5, 8.8, Plt          |     | each             | 8           |       |          |
| 110             | WFA10000        | Washer, Flat, 10mm, 8.8, Plt          |     | each             | 12          |       |          |
| 120             | WLA14000        | Washer, Lock, 14mm, 8.8, Plt          |     | each             | 5           |       |          |
| 130             | WLA10000        | Washer, Lock, 10mm, 8.8, Plt          |     | each             | 20          |       |          |



ISOMETRIC VIEW

- NOTES:
- 1) USE SERVICABLE THREADLOCKER ON ALL FASTENERS TO ENGINE COMPONENTS AND TORQUE ALL BOLTS TO S.A.E. SPECIFICATIONS.
  - 2) SEE "TRANSARGTIC A/C COMPRESSOR MOUNT INSTALLATION DISCLAIMER".
  - 3) MODIFY EXISTING UPPER RADIATOR HOSE (90 DEG. ELBOW) ON PASSENGER SIDE (TO CLEAR TOP OF COMPRESSOR BEING INSTALLED) BY REMOVING HOSE ELBOW AND CUTTING 1/2" OFF THE "ENGINE END" AND THEN RE-INSTALL THE "CUT END" BACK ON THE ENGINE FITTING.

| ITEM | QTY | U/M  | PART NUMBER | DESCRIPTION                                |
|------|-----|------|-------------|--|
| 23   | 5   | EACH | WLA14000    | WASHER, LOCK, 14mm, 8.8, PLT               |
| 22   | 20  | EACH | WLA10000    | WASHER, LOCK, 10mm, 8.8, PLT               |
| 21   | 12  | EACH | WFA10000    | WASHER, FLAT, 10mm, 8.8, PLT               |
| 20   | 2   | EACH | TEN40002    | TENR, MINI, ASSY, SPRING, BKSIDE, CCW      |
| 19   | 2   | EACH | SPC28610    | SPACER, COIL, DRL, 28.6mm x 25.4o x 10.3I  |
| 18   | 4   | EACH | SCS36250    | SCREW, SET, CUP, 3/8-16UNC x 2.5, 9, PLT   |
| 17   | 1   | EACH | PUL71008    | PULLEY, CRANK, C7, P8, 8" DIA., 5"         |
| 16   | 8   | EACH | NTA10000    | NUT, HEX, 10 x 1.5, 8.8, PLT               |
| 15   | 1   | EACH | FSP9286     | SPACER, FAN, PULLEY, ISC, 28.6mm (1.13")   |
| 14   | 1   | EACH | CFS14031    | CAPSCREW, FH, 14 x 2 x 30mm, 10.9, PLT     |
| 13   | 2   | EACH | BTOQ6250    | BOLT, HEX, 3/8-16UNC, 2.50", 8, PLT        |
| 12   | 3   | EACH | BTC14080    | BOLT, HEX, 14 x 2 x 80mm, 10.9, PLT        |
| 11   | 2   | EACH | BTC14050    | BOLT, HEX, 14 x 2.0 x 50mm, 10.9, PLT      |
| 10   | 8   | EACH | BTC10065    | BOLT, HEX, 10 x 1.5 x 65mm, 10.9, PLT      |
| 9    | 8   | EACH | BTC10035    | BOLT, HEX, 10 x 1.5 x 35mm, 10.9, PLT      |
| 8    | 12  | EACH | BTC10030    | BOLT, HEX, 10 x 1.5 x 30mm, 10.9, PLT      |
| 7    | 2   | EACH | BMS60006    | BRKT, CRADLE, REAR, TM-16, 3126, U/S, P4   |
| 6    | 2   | EACH | BMS60005    | BKT, CRADLE, FRONT, TM-16, 3126, U/S, P4   |
| 5    | 1   | EACH | BMK70026    | BKT, SPACER, PL, C7, 12" DAMPER, 3/16" THK |
| 4    | 1   | EACH | BMK70007    | BKT, MAIN, ASSY, C7, A3FE, P/S, P4         |
| 3    | 1   | EACH | BMK70006    | BKT, MAIN, WELDMT, C7, A3FE, DIS, P4       |
| 2    | 1   | EACH | BEL11143    | BELT, 4 gr, 1143mm (45")                   |
| 1    | 1   | EACH | BEL11130    | BELT, 4gr, 1130mm (44.5")                  |

BILL OF MATERIALS

**TRANSARGTIC INC.**

| REV# | DESCRIPTION            | DATE       | BY  |
|------|------------------------|------------|-----|
| 4    | ISSUED                 | 6/5/2006   | VLJ |
| 3    | REVISED                | 10/13/2004 | VLJ |
| 2    | REVISED                | 4/26/2004  | VLJ |
| 1    | RELEASED TO PRODUCTION | 12/8/2003  | GA  |

APPROVED: **James Stewart** 12/8/2003  
**Val Jakovlev** 12/8/2003  
**Dale Mason** 12/8/2003

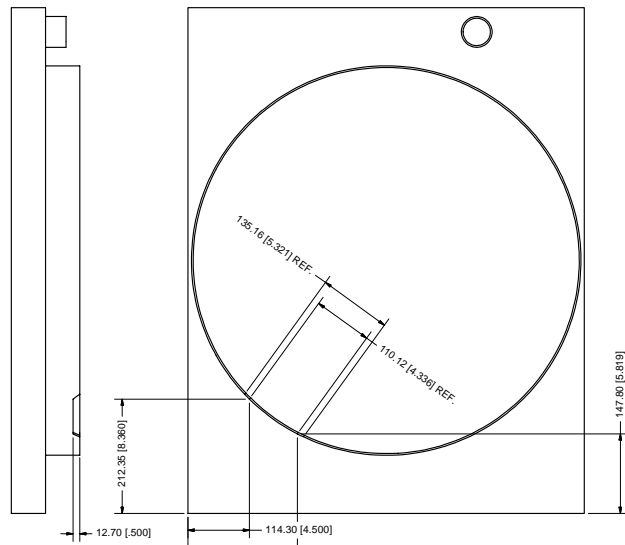
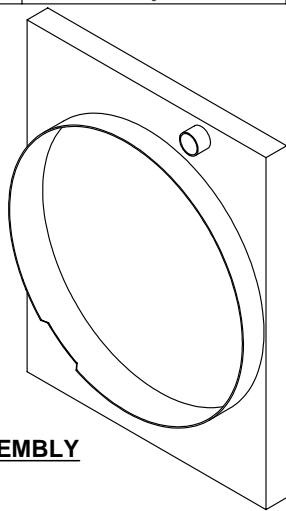
|                               |          |                         |  |        |  |
|-------------------------------|----------|-------------------------|--|--------|--|
| TITLE                         |          | DRAWING UNIT OF MEASURE |  | REV    |  |
| MT KIT, C7, A3FE, 2 TM-16, P4 |          | MM [INCH]               |  | 4      |  |
| SIZE                          | DWG NO   | SCALE                   |  | SHEET  |  |
| D                             | KMK72051 | 1:3                     |  | 1 OF 2 |  |

UNSPECIFIED TOLERANCES:

|                           |        |
|---------------------------|--------|
| ONE DECIMAL PLACE (X)     | ± .05  |
| TWO DECIMAL PLACE (XX)    | ± .01  |
| THREE DECIMAL PLACE (XXX) | ± .005 |
| FRACTIONAL (1/16)         | ± .005 |
| ANGULAR                   | ± .01  |

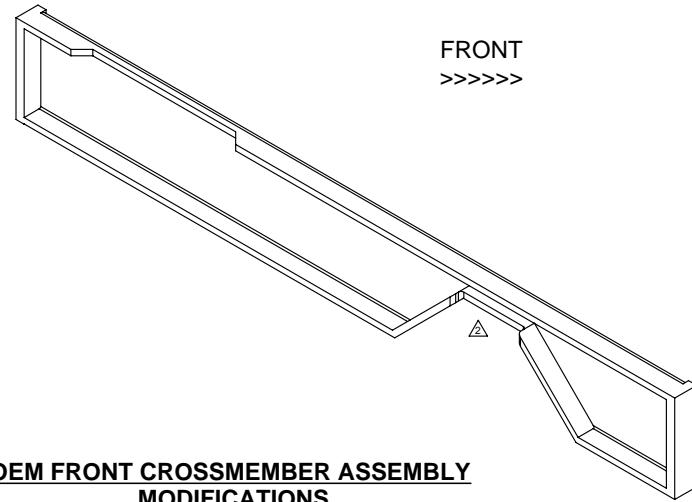
THIRD ANGLE PROJECTION

**OEM FAN SHROUD/RADIATOR ASSEMBLY  
MODIFICATION**



- NOTES:**
- 1) USE SERVICABLE THREADLOCKER ON ALL FASTENERS TO HOLD COMPONENTS AND TORQUE ALL BOLTS TO S.A.E. SPECIFICATIONS.
  - 2) SEE "TRANSARCTIC A/C COMPRESSOR MOUNT INSTALLATION DISCLAIMER".
  - 3) MODIFY EXISTING UPPER RADIATOR HOSE (90 DEG. ELBOW) ON PASSENGER SIDE (TO CLEAR TOP OF COMPRESSOR BEING INSTALLED.) BY REMOVING HOSE ELBOW AND CUTTING 1/2" OFF THE "ENGINE END" AND THEN RE-INSTALL THE "CUT END" BACK ON THE ENGINE FITTING.
  - 4) MODIFY THE CHASSIS'S "FRONT CROSSMEMBER" TOP FLANGE TO SUIT THE DRIVER SIDE COMPRESSOR'S CLUTCH/PULLEY ASSEMBLY. (REMOVE APPROX. 1/2" OF THE TOP FLANGE OF THE "FRONT CROSSMEMBER" AROUND THE CLUTCH/PULLEY ASS'Y. THIS ALLOWS FOR BELT REPLACEMENT AS WELL AS CLEARANCE.) ALSO REMOVE 3/8" X BOTTOM SHORT FLANGE OF THE PASSENGER SIDE "RAD HOSE CLEARANCE ARCH" TO ALLOW FOR CLEARANCE OF THE PASSENGER SIDE TENSIONER'S MAIN CYLINDRICAL POST.
  - 5) MODIFY THE RADIATOR'S "FAN BLADES" SHROUD TO SUIT THE DRIVER'S SIDE TENSIONER PULLEY ASSEMBLY. (REMOVE APPROX. 1/2" OF THE BOTTOM D/S SECTION OF THE SHROUD. THIS ALLOWS FOR CLEARANCE OF THE TENSIONER PULLEY'S SWING RADIUS.)
  - 6) AS REQUIRED, REPLACE EXISTING 5/16" THICK SPACER PLATE WITH THE ONE SUPPLIED. (BMK70026) AFTER CHECKING PULLEY ALIGNMENTS. (\*\*NOTE: THIS SHOULD ONLY PERTAIN TO 12" DIA. DAMPER AND/OR 275 HP ENGINES.\*\*)

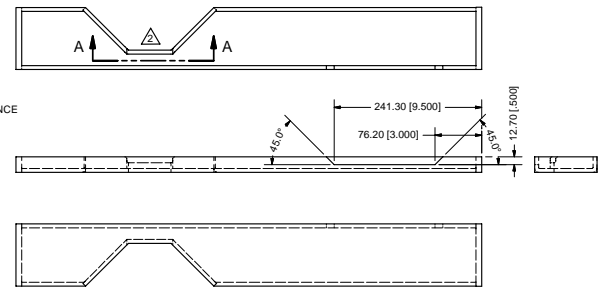
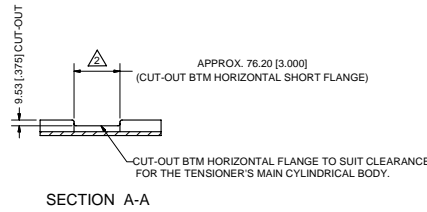
DRIVER'S  
SIDE



FRONT  
>>>>>

PASSENGER  
SIDE

**OEM FRONT CROSSMEMBER ASSEMBLY  
MODIFICATIONS**



|     |                                      |             |      |               |           |  |
|-----|--------------------------------------|-------------|------|---------------|-----------|--|
| 4   | WAS PUL4001.                         | 6/5/2006    | VAL  | DRAWN         | 12/8/2003 |  |
| 3   | PULY TONGE WAS PUL70008 ADD NOTE #10 | 10/15/2004  | VAL  | Vjakowlew     | 12/8/2003 |  |
| 2   | ADDED NOTCH & SHFT 2 DETAILS         | 12/8/2004   | VAL  | CHECKED       | 12/8/2003 |  |
| 1   | ADDED NOTES & SHFT 2 DETAILS         | 12/12/2003  | VAL  | Ron Ingram    | 12/8/2003 |  |
| 0   | RELEASED TO PRODUCTION               | 12/8/2003   | VAL  | GA            | 12/8/2003 |  |
| REV | ECN                                  | DESCRIPTION | DATE | BY            | APPROVED  |  |
|     |                                      |             |      | James Stewart | 12/8/2003 |  |
|     |                                      |             |      | Val Jakowlew  | 12/8/2003 |  |
|     |                                      |             |      | Dale Mason    | 12/8/2003 |  |

THIS DRAWING CONTAINS PROPRIETARY CONFIDENTIAL INFORMATION OWNED BY TRANSARCTIC CANADA INC. THE DOCUMENT AND THE INFORMATION IN IT ARE NOT TO BE USED, DISCLOSED OR REPRODUCED WITHOUT EXPRESS WRITTEN PERMISSION OF THE COMPANY.

|                           |               |  |                         |           |
|---------------------------|---------------|--|-------------------------|-----------|
| UNSPECIFIED TOLERANCES:   |               |  | DRAWING UNIT OF MEASURE | MM [INCH] |
| ONE DECIMAL PLACE (X)     | .05           |  |                         |           |
| TWO DECIMAL PLACE (XX)    | .02           |  |                         |           |
| THREE DECIMAL PLACE (XXX) | .01           |  |                         |           |
| FRACTIONAL (1/32)         | ANGULAR ± .01 |  |                         |           |

|        |                               |
|--------|-------------------------------|
| TITLE  | MT KIT, C7, A3FE, 2 TM-16, P4 |
| SIZE   | D                             |
| DWG NO | KMK72051                      |
| SCALE  | 1:4                           |
| REV    | 4                             |
| SHEET  | 2 OF 2                        |

## **TransArctic A/C Compressor Mount Installation Disclaimer**

Due to the many different situations, parameters and application criteria, which are beyond the compressor mount manufacturer's control, TransArctic does not warrant design, durability, or operational functionality of any compressor mount installed by another party.

The installer of any compressor mount purchased from TransArctic must undertake all responsibility of issues arising from that compressor bracket being installed on any vehicle. Mount functionality, operation and durability can all be compromised by an incompetent installation.

All compressor mounts should be installed by qualified and trained personnel using proper tools and equipment in safe working conditions following industry standard guidelines for motor vehicle service and repair.

**With no implied guarantees it is the mount installer's strict responsibility to determine safety and functionality, of the compressor mount, at the time of installation.**

Please contact TransArctic with any issue arising from installation so we may better improve the product. If you have any reservations about the compressor mount integrity contact TransArctic immediately at 1-877-COLD-AIR.