

Bill of Materials Listing

TransArctic Canada Inc.

5/3/2017
Page 1 of 1

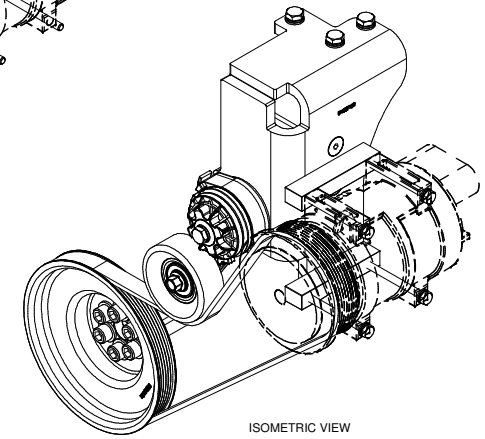
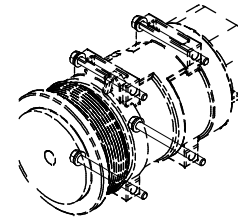
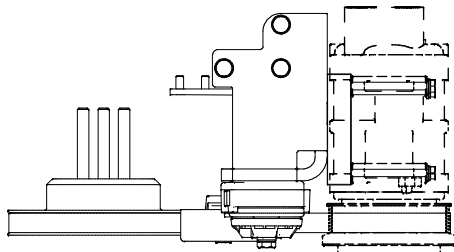
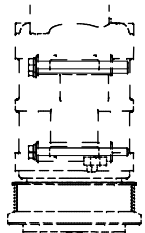
Product Number	Description	Date	Weight	Uof M	Yield
Line Component Prod# Description	Bin	Unit	Qty		
KMC62694	Mt Kit, ISB, 6.7L, HDX, 2 TM-21, '13+	3/23/2016	28.40		0
10 PAC15110	Pack, Carton, 15" x 11" x 10", 51 ECT	each	1		
15 BEL61321	Belt, 6gr, 1321mm (52.0") (5060520)	each	1		
20 BMC67152	BKT, WELDM'T, ISB, 6.7L, '13+	each	1		
30 BMC67151	BKT, WELDM'T, ISB, 6.7L, Support Arm	each	1		
50 PUL67006	Pulley, Crank, ADD-ON, Cum, ISB, 6.7, P6	each	1		
80 TEN80005	Tenr, HD Spring, BackSide, CCW (89430)	each	1		
90 KBC62694	Bag Kit, Fasteners, KMC62694	Each	1		

Bill of Materials Listing

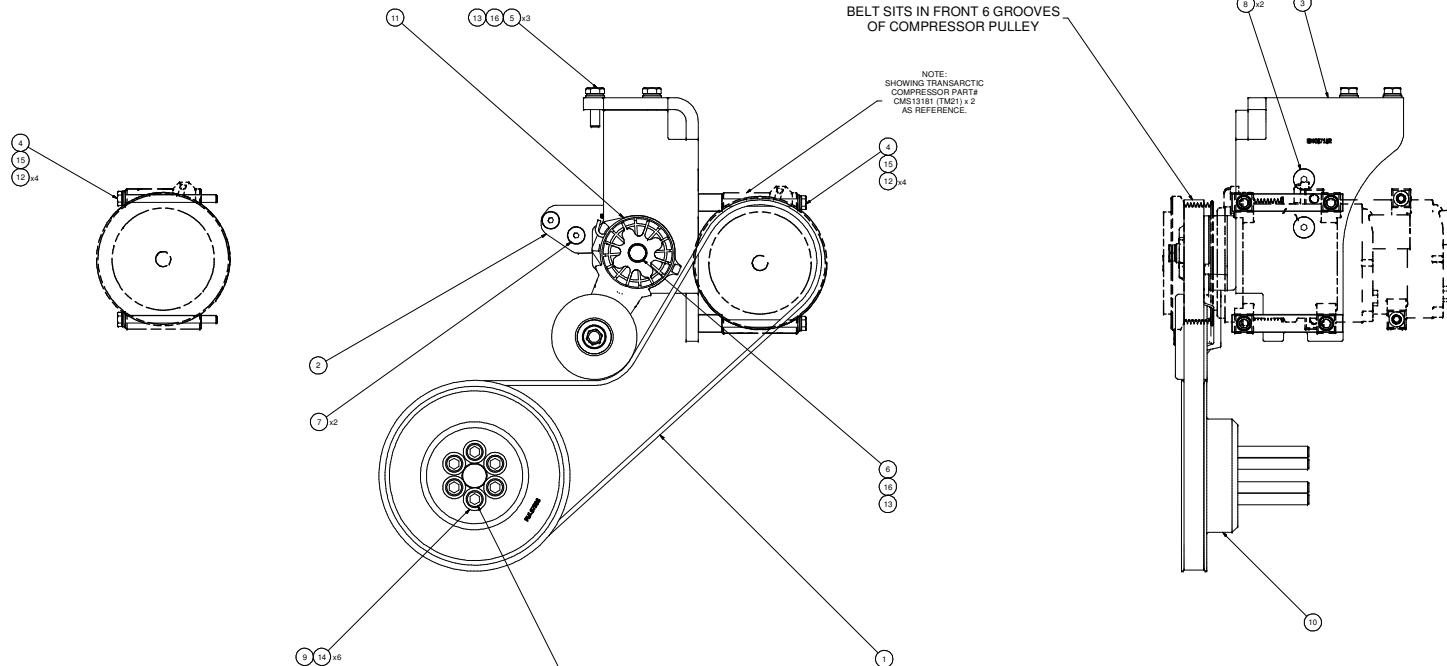
TransArctic Canada Inc.

5/3/2017
Page 1 of 1

Product Number	Description	Date	Weight	Uof M	Yield
Line Component Prod#	Description	Bin Unit	Qty		
KBC62694	Bag Kit, Fasteners, KMC62694		2/17/2016	2.52	0
10 BTC08100	Bolt, Hex, 8 x 1.25 x 100mm, 10.9, Plt	each	8		
20 BTC10035	Bolt, Hex, 10 x 1.5 x 35mm, 10.9, Plt,FT	each	3		
40 BTC10090	Bolt, Hex, 10 x 1.5 x 90mm, 10.9, Plt	each	1		
51 CSF08021	Capscrew, FH, 8 x 1.25 x 20mm, 10.9,Plt	each	2		
52 CSF10031	Capscrew, FH, 10 x 1.5 x 30mm, 10.9,Plt	each	2		
60 CSS12090	Capscrew, SH, 12 x 1.25 x 90mm, 12.9,BLK	each	6		
70 WLA08000	Washer, Lock, 8mm, 8.8, Plt	each	8		
80 WLA10000	Washer, Lock, 10mm, 8.8, Plt	each	4		
90 WFA08000	Washer, Flat, 8mm, 8.8, Plt	each	8		
100 WFA10000	Washer, Flat, 10mm, 8.8, Plt	each	4		
110 WFS12002	Washer, Flat, Hdn, 12mm, Stl, BLK	each	6		



ISOMETRIC VIEW



BELT SITS IN FRONT 6 GROOVES OF COMPRESSOR PULLEY

NOTE:
SHOWING TRANSARCTIC
COMPRESSOR PARTS
GMS13181 (TM21) x 2
AS REFERENCE

NOTE:
TORQUE TO: 37 FT-LB PLAIN & LUBRICATED W/ CLEAN ENGINE OIL (15W-40)
(SH. CAPSCREW M12 x 1.25 x 90mm)
TIGHTEN IN TWO STEPS IN A CRIS-CROSS TIGHTENING SEQUENCE PATTERN.

NOTES:
1) USE SERVICABLE THREADLOCKER ON ALL FASTENERS TO ENGINE COMPONENTS AND TORQUE ALL BOLTS TO S.A.E SPECIFICATIONS.
2) SEE "TRANSARCTIC A/C COMPRESSOR MOUNT INSTALLATION DISCLAIMER"

ITEM	QTY	UOM	PART NUMBER	DESCRIPTION
16	4	EACH	WL110000	WASHER LOCK, 10mm, 8.8, PLT
15	8	EACH	WL480000	WASHER LOCK, 8mm, 8.8, PLT
14	6	EACH	WFS12002	WASHER FLAT, HDN, 12mm, STL, BLK
13	4	EACH	WFA10000	WASHER FLAT, 10mm, 8.8, PLT
12	8	EACH	WFA80000	WASHER FLAT, 8mm, 8.8, PLT
11	1	EACH	TEN80005	TENR, HD SPRING, BACKSIDE, CCW (89430)
10	1	EACH	PLU67006	PULLEY CRANK, ADD-ON, CUM, ISB, 6.7, PE
9	6	EACH	CSF10099	CAPSCREW, SH, 1.25 x 90mm, 10.9, PLT
8	2	EACH	CSF10031	CAPSCREW, FH, 10 x 1.5 x 30mm, 10.9, PLT
7	2	EACH	CSF08021	CAPSCREW, FH, 8 x 1.25 x 10mm, 10.9, PLT
6	1	EACH	BTC10050	BOLT, HEX, 10 x 1.5 x 50mm, 10.9, PLT
5	3	EACH	BTC10035	BOLT, HEX, 10 x 1.5 x 35mm, 10.9, PLT
4	8	EACH	BTC08100	BOLT, HEX, 8 x 1.25 x 100mm, 10.9, PLT
3	1	EACH	BMC67152	BKT, MAIN, WELDMNT, 6.7L, ISB, 132
2	1	EACH	BMC67151	BKT, WELDMNT, ISB, 6.7L, SUPPORT ARM
1	1	EACH	BEL61321	Belt, 6pr, 1320mm (52.0")

REV	ECN	DESCRIPTION	DATE	BY
1		RELEASED TO PRODUCTION	3/2017	DA
2		REVISED TO PRODUCTION	8/2016	DA
3		DESCRIPTION	DATE	BY
4		DATE	DATE	DATE
5		DATE	DATE	DATE
6		DATE	DATE	DATE
7		DATE	DATE	DATE
8		DATE	DATE	DATE
9		DATE	DATE	DATE
10		DATE	DATE	DATE

TRANSARCTIC INC.

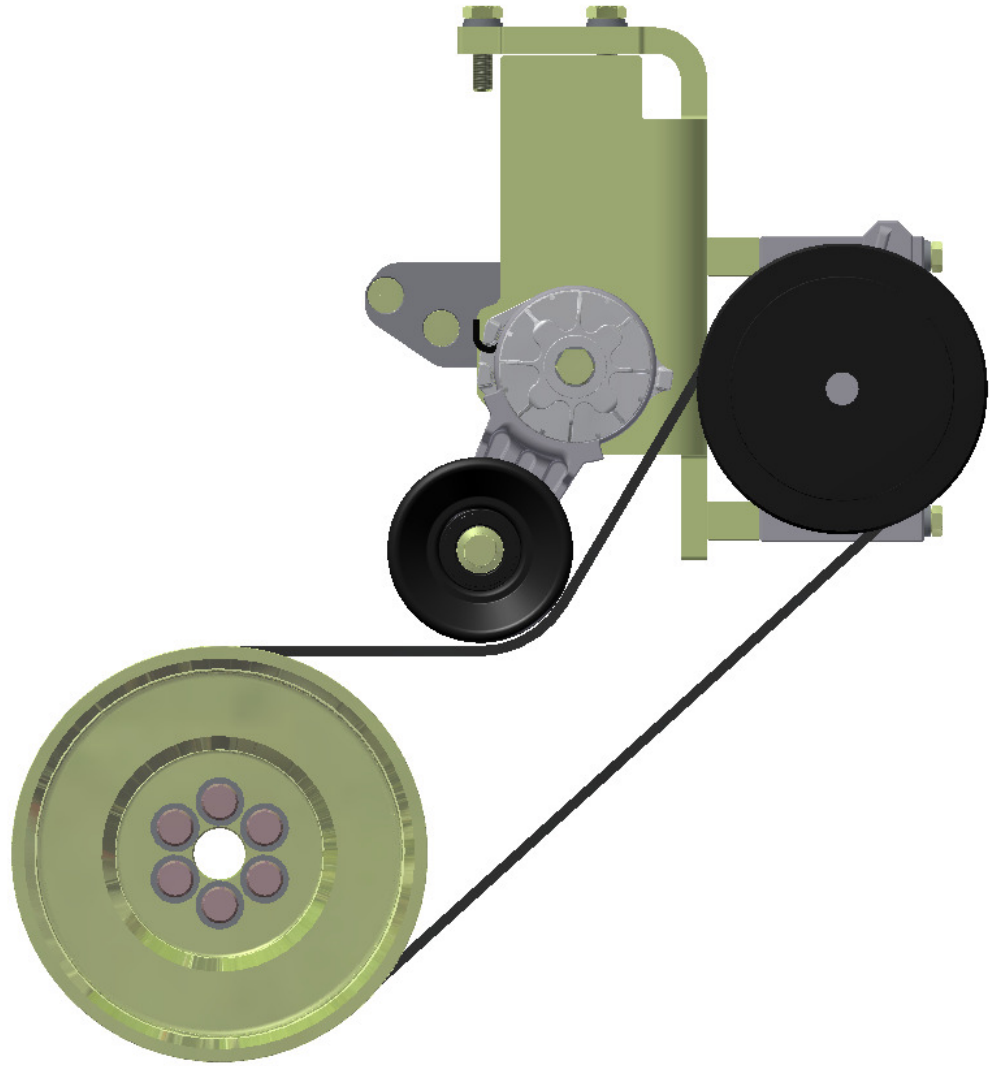
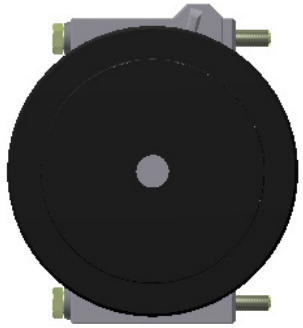
MT Kit, ISB, 6.7L, HDX, 2 TM-21, 13+

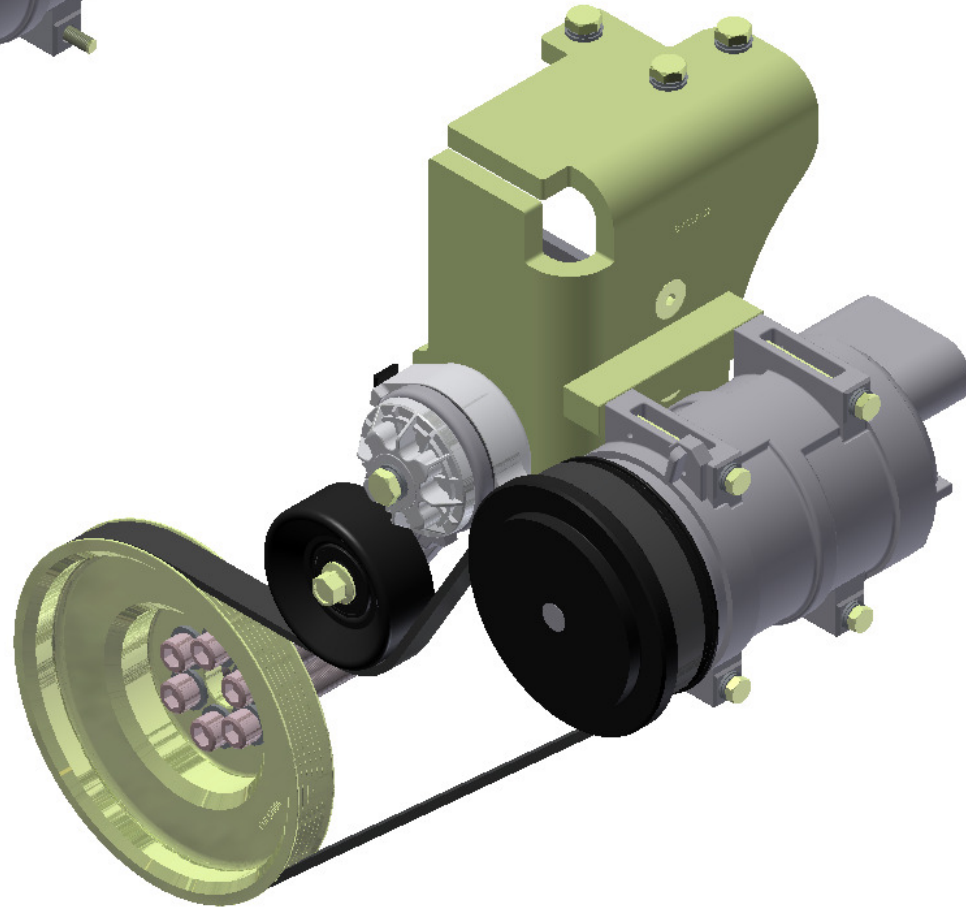
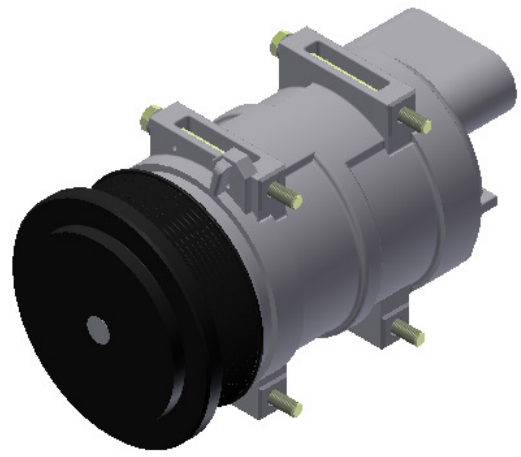
DATE: 8/5/2016

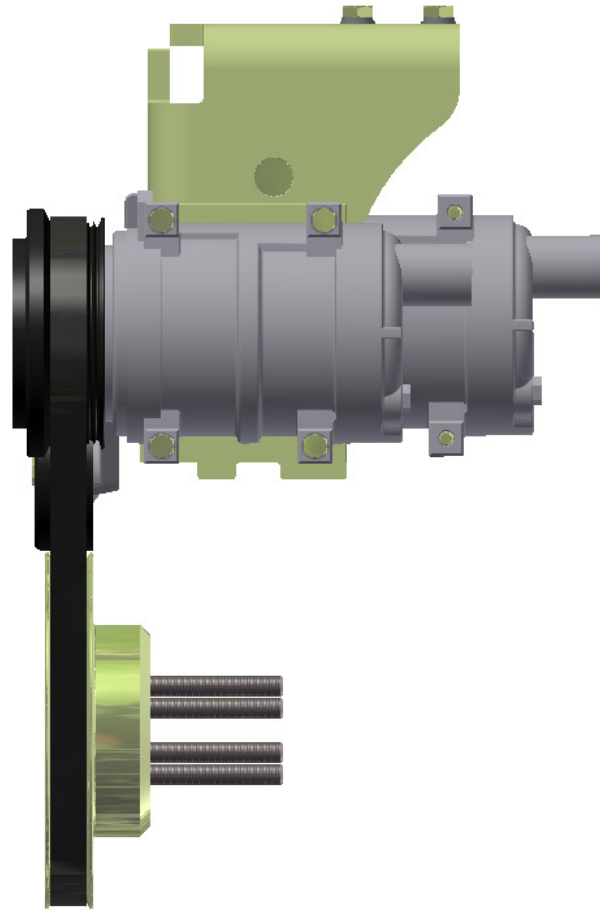
SIZE: E

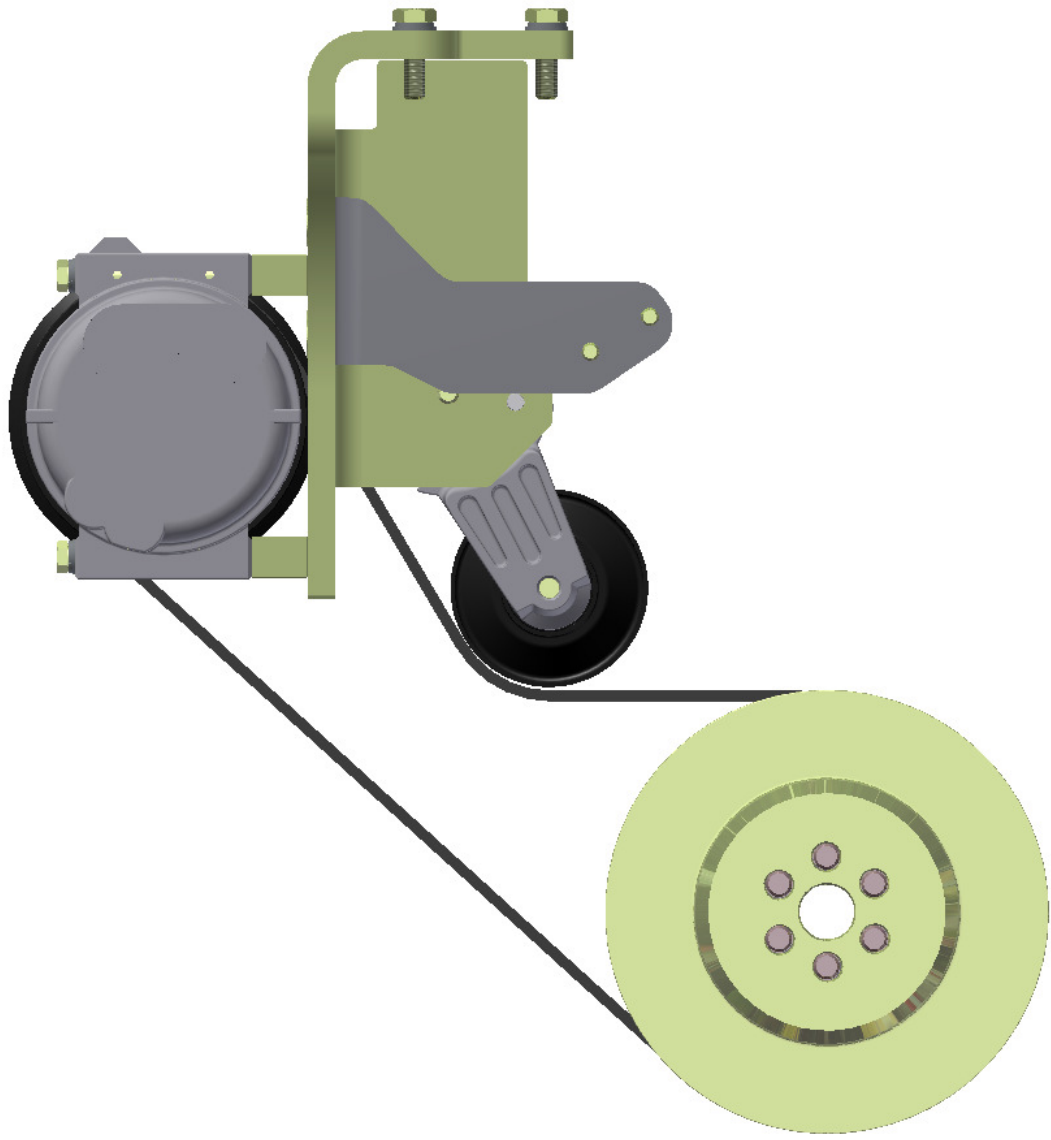
SCALE: 1:2

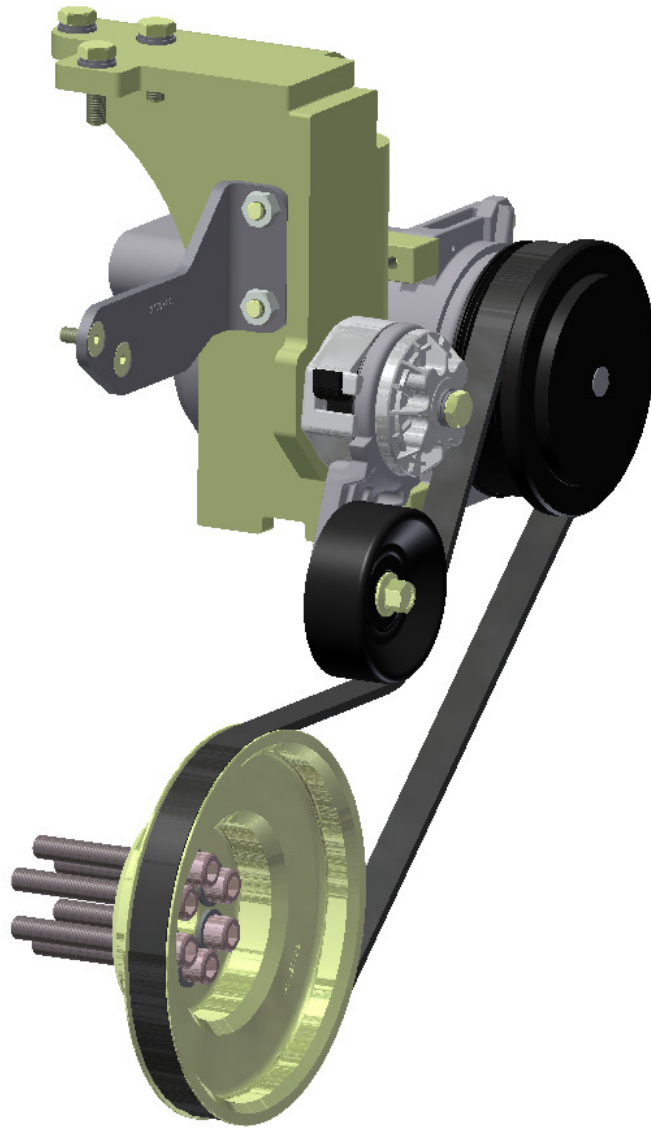
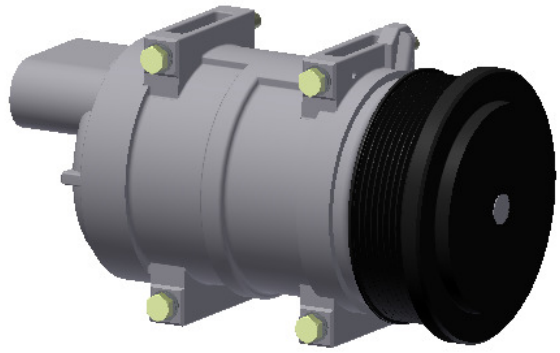
SHEET: 1 OF 1











TransArctic A/C Compressor Mount Installation Disclaimer

All compressor mounts should be installed by qualified and trained personnel using proper tools and equipment in safe working conditions following industry standard guidelines for motor vehicle service and repair.

The installer of any compressor mount purchased from TransArctic must undertake all responsibility of issues arising from that compressor bracket being installed on any vehicle. As well as insure that a **proper and sufficient ground** is established between the compressors' clutches and the vehicle's engine. Mount functionality, operation and durability can all be compromised by an incompetent installation.

Due to the many different situations, parameters and application criteria, which are beyond the compressor mount manufacturer's control, TransArctic does not warrant design, durability, or operational functionality of any compressor mount improperly installed by another party.

With no implied guarantees it is the mount installer's strict responsibility to determine safety and functionality, of the compressor mount, at the time of installation.

Please contact TransArctic with any issue arising from installation so we may better improve the product. If you have any reservations about the compressor mount integrity contact TransArctic immediately at 1-877-COLD-AIR.

Mark OEM tensioner location

Install Kit

Check for Interferences

Check to ensure that the proper OEM tensioner orientation is maintained

Run engine with A/C system engaged for at least 10 minutes to run in belt

Check OEM tensioner orientation and adjust as required

Responsabilidad limitada de TransArctic en la instalación del soporte del compresor

Todos los soportes de los compresores deben ser instalados por personas calificadas y entrenadas, usando para ello los equipos y herramientas necesarios para esta labor en buenas condiciones y según las normas y guías para el servicio y/o reparación de motores de vehículos.

El instalador de los soportes comprados en TransArctic asume toda la responsabilidad de cualquier problema que surga en el soporte del compresor al vehículo; de igual manera es responsable que el cable a tierra sea conectado entre el embrague del compresor y el motor del vehículo.

Se advierte que el buen funcionamiento y la durabilidad del soporte pueden ser comprometidos por defectos en su instalación.

Debido a las diversas situaciones que se puedan presentar fuera del control del fabricante, TransArctic no garantiza el diseño, la durabilidad o el correcto funcionamiento de cualquier equipo inapropiadamente instalado por terceros.

Esta sobreentendido que el Instalador del montaje del compresor es estrictamente responsable de la seguridad y funcionamiento del equipo en el momento de la instalación.

Si tuviera algún problema o duda acerca de la instalación del soporte del compresor pongase en contacto inmediatamente con TransArctic al teléfono 1-877-COLD-AIR de modo que podamos mejorar nuestro producto.

Note la ubicación del medidor de tensión OEM

Instale el equipo

Controlar si hay interferencias.

Asegurese que el medidor de tensión mantenga la orientación justa.

Encienda el motor por lo menos 10 minutos con el sistema A/C enganchado para que la correa corra

Controle la orientación justa del medidor de tensión y ajuste a las condiciones requeridas del fabricante