

# Bill of Materials Listing

TransArctic Canada Inc.

8/18/2016  
Page 1 of 1

Product Number	Description	Date	Weight	Uof M	Yield
Line    Component    Prod#    Description	Bin	Unit	Qty		
<b>KMC61301</b>	<b>Mt. Kit, ISB, 6.7L, IC, CE300, TM21, '13</b>	<b>1/23/2015</b>	<b>51.92</b>		<b>0</b>
10 BEL81422	Belt, 8gr, 1422mm (56") (5080560)		1		
20 BMC67110	BKT, MAIN, Weldmn't. IC. Conv.'13		1		
30 TUS01891	Tube, Stl, Rad, 1.75" O.D.		1		
40 BMC67112	Bkt, Adapt. PL. TM43, IC. Conv'13		1		
60 PUL67018	Pulley, Fan., Add-on., ISB13 6.7, 8gr		1		
70 BMC67063	Bkt, Alt, Bar, ISB, F400, BBCV, '10		1		
80 TEN80002	Tenr, HD Spring, BackSide, CCW (89200A)		1		
90 CLP36001	Clamp, Gear, #36, 1 13/16-2 3/4 (46/70mm)		3		
100 CLP40001	Clamp, Gear, #40, 2 1/16- 3 (52/76mm)		1		
110 BMC67118	Bkt, Shroud, TM21, 6.7L, IC., Conv.'13		1		
120 BMC67117	Bkt, TM43 to TM21, 6.7L, IC., Conv'13		2		
130 BMC67119	Bkt, Rad sprt. TM43/21, 6.7L. IC. Conv.'13		1		
140 BMC67120	Bkt, Rad sprt. TM43/21, 6.7L. IC. Conv.'13		1		
150 BTS06176	Bolt, U, 3/8-16, 1.75" I.D, W, Nut/PLT.		2		
160 KBC61301	Bag Kit, Fasteners, TM21- KMC62701		1		

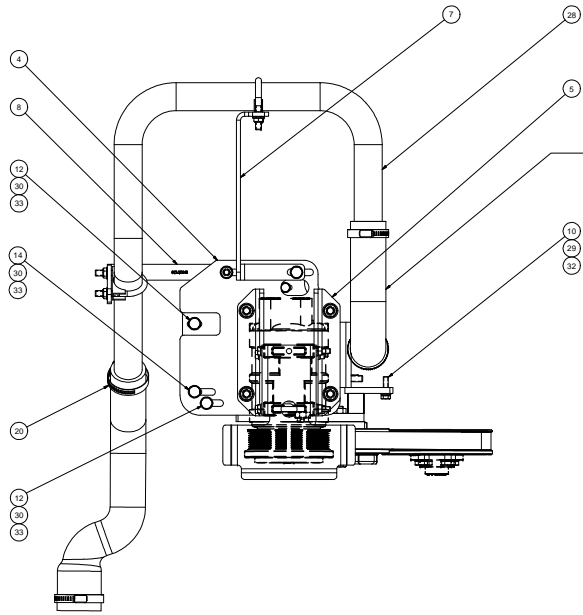
# Bill of Materials Listing

TransArctic Canada Inc.

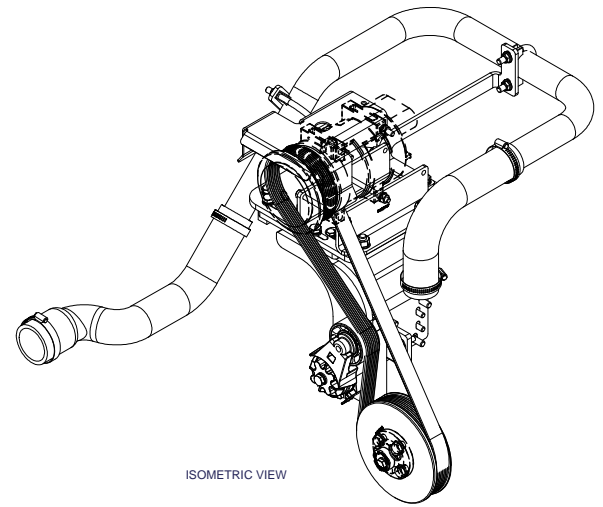
8/18/2016  
Page 1 of 1

Product Number	Description	Date	Weight	Uof M	Yield
Line	Component Prod#	Bin	Unit	Qty	
<b>KBC61301</b>	<b>Bag Kit, Fasteners, TM21- KMC62701</b>		<b>1/23/2015</b>	<b>2.68</b>	<b>0</b>
10	NTA12000		Nut, Hex, 12 x 1.75, 8.8, Plt	each	4
20	WLA12000		Washer, Lock, 12mm, 8.8, Plt	each	4
30	WFA12000		Washer, Flat, 12mm, 8.8, Plt	each	4
40	CSF12036		Capscrew, FH, 12 x 1.75 x 35mm, 10.9,Plt	each	4
50	BTC10150		Bolt, Hex, 10 x 1.5 x 150mm, 10.9, Plt	each	2
60	BTC10090		Bolt, Hex, 10 x 1.5 x 90mm, 10.9, Plt	each	1
70	BTC10070		Bolt, Hex, 10 x 1.5 x 70mm, 10.9, Plt	each	4
75	BTC10045		Bolt, Hex, 10 x 1.5 x 45mm, 10.9, Plt,FT	each	1
80	BTC10035		Bolt, Hex, 10 x 1.5 x 35mm, 10.9, Plt,FT	each	5
90	BTC10030		Bolt, Hex, 10 x 1.5 x 30mm, 10.9, Plt	each	1
100	BTC10025		Bolt, Hex, 10 x 1.5 x 25mm, 10.9, Plt	each	3
110	WFA10000		Washer, Flat, 10mm, 8.8, Plt	each	18
120	WLA10000		Washer, Lock, 10mm, 8.8, Plt	each	13
125	NTA10000		Nut, Hex, 10 x 1.5, 8.8, Plt	each	1
130	BTC08030		Bolt, Hex, 8 x 1.25 x 30mm, 10.9, Plt,FT	each	3
140	BTC08025		Bolt, Hex, 8 x 1.25 x 25mm, 10.9, Plt	each	4
150	WFA08000		Washer, Flat, 8mm, 8.8, Plt	each	15
160	WLA08000		Washer, Lock, 8mm, 8.8, Plt	each	11
170	NTA08000		Nut, Hex, 8 x 1.25, 8.8, Plt	each	4
180	BTC08110		Bolt, Hex, 8 x 1.25 x 110mm, 10.9, Plt	each	4

Note: Pulley does not require 10mm lockwashers, Just flat washers and 10mm x 35mm bolts torqued to spec.

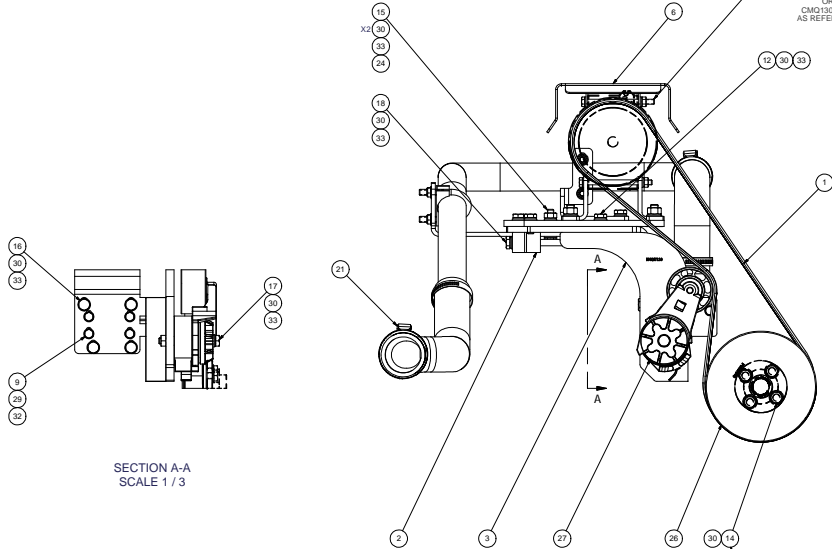


NOTE:  
REMOVE EXISTING OEM. RAD HOSE AND  
CUT TO LENGTH TO SUIT BOTH ENDS OF TUBE (TUS01891).  
HOSE MUST BE RE-INSTALLED NO LESS THAN 2"  
ONTO TUBE. (BOTH ENDS).



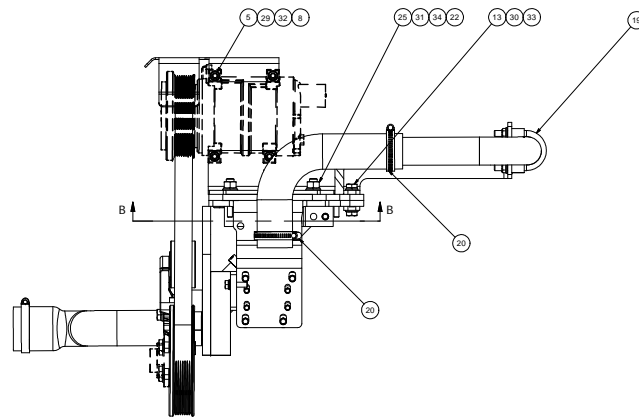
ISOMETRIC VIEW

NOTE:  
SHOWING TRANSARCTIC  
COMPRESSOR PART#  
CMS13181 x 1  
OR  
CAG13080 x 1  
AS REFERENCE



SECTION A-A  
SCALE 1 / 3

NOTE:  
LOCK WASHERS ARE NOT REQUIRED.  
TORQUE BOLTS TO S.A.E. SPECIFICATIONS.



SECTION B-B  
SCALE 1 / 4

NOTES:  
1) USE SERVICABLE THREADLOCKER ON ALL FASTENERS TO ENGINE COMPONENTS AND TORQUE ALL BOLTS TO S.A.E. SPECIFICATIONS.  
2) SEE TRANSARCTIC A/C COMPRESSOR MOUNT INSTALLATION DISCLAIMER.  
3) REMOVE ALTERNATOR, MOUNT CASTING AND LIFTING LUG & REPLACE THE LIFT LUG WITH ITEM # BMC67110 AND RE-INSTALL ALTERNATOR AND MOUNT CASTING.  
REFER TO INSTALLATION PROCEDURE.

ITEM	QTY	UOM	PART NUMBER	DESCRIPTION
34	4	EACH	WLA12000	WASHER, LOCK, 12mm, 8.8, PLT
33	13	EACH	WLA10000	WASHER, LOCK, 10mm, 8.8, PLT
32	11	EACH	WLA08000	WASHER, LOCK, 8mm, 8.8, PLT
31	4	EACH	WFA12000	WASHER, FLAT, 12mm, 8.8, PLT
30	18	EACH	WFA10000	WASHER, FLAT, 10mm, 8.8, PLT
29	15	EACH	WFA08000	WASHER, FLAT, 8mm, 8.8, PLT
28	1	EACH	TUS01891	TUBE, STL, RAD, 1.75" O.D. x .71 I.C. Conv'13
27	1	EACH	TEN80002	TENR, HD SPRING, BACKSIDE, C/W
26	1	EACH	PUL67018	Pulley, Fan, Add-on, ISB13, 6.7, 8gr
25	4	EACH	NTA12000	NUT, HEX, 12 x 1.25, 8.8, PLT
24	1	EACH	NTA10000	NUT, HEX, 10 x 1.5, 8.8, PLT
23	4	EACH	NTA08000	NUT, HEX, 8 x 1.25, 8.8, PLT
22	4	EACH	CSE10004	CARCSRW, PH 12 x 1.75 x 25mm, 10.9, PLT
21	1	EACH	CLP40001	CLAMP, GEAR, #16, 15/16-1 1/2, S, 3in I.D.
20	3	EACH	CLP36001	CLAMP, GEAR, #36, 1 13/16-2 3/4, (44/70mm)
19	2	EACH	BT508176	Bolt, H, 3/8-16, 1.75, 1.0, W, Nut/PLT
18	2	EACH	BT101050	BOLT, HEX, 10 x 1.5 x 150mm, 10.9, PLT
17	1	EACH	BT10090	BOLT, HEX, 10 x 1.5 x 90mm, 10.9, PLT
16	4	EACH	BT10050	BOLT, HEX, 10 x 1.5 x 70mm, 10.9, PLT
15	1	EACH	BT10045	BOLT, HEX, 10 x 1.5 x 45mm, 10.9, PLT
14	5	EACH	BT10035	BOLT, HEX, 10 x 1.5 x 35mm, 10.9, PLT
13	1	EACH	BT10030	BOLT, HEX, 10 x 1.5 x 30mm, 10.9, PLT
12	4	EACH	BT10025	BOLT, HEX, 10 x 1.5 x 25mm, 10.9, PLT
11	4	EACH	BT08110	BOLT, HEX, 8 x 1.25 x 110mm, 10.9, PLT
10	3	EACH	BT108050	BOLT, HEX, 8 x 1.25 x 30mm, 10.9, PLT
9	4	EACH	BT08025	BOLT, HEX, 8 x 1.25 x 25mm, 10.9, PLT
8	1	EACH	BMC67120	BKT, RAD SPRT, TM43/21, 6.7L, IC, Conv'13
7	1	EACH	BMC67119	BKT, RAD SPRT, TM43/21, 6.7L, IC, Conv'13
6	1	EACH	BMC67118	BKT, SHOULD, TM21, 6.7L, IC, Conv'13
5	2	EACH	BMC67117	BKT, TM43 TO TM21, 6.7L, IC, Conv'13
4	1	EACH	BMC67112	BKT, ADAPT PL, TM 43, IC, Conv'13
3	1	EACH	BMC67110	BKT, MAIN, Washdown, IC, Conv'13
2	1	EACH	BMC67063	BKT, ALT, BAR, ISB, F400, BBCV, 10
1	1	EACH	BEL81422	BELT, B GR, 1422mm (56"5080560)

REV	DATE	DESCRIPTION	BY
1	2/2/2015	DESIGN TO PRODUCTION	James Stewart
2	2/2/2015	REVISED	James Stewart
3	2/2/2015	REVISED	James Stewart
4	2/2/2015	REVISED	James Stewart
5	2/2/2015	REVISED	James Stewart

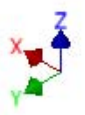
**TRANSARCTIC INC.**

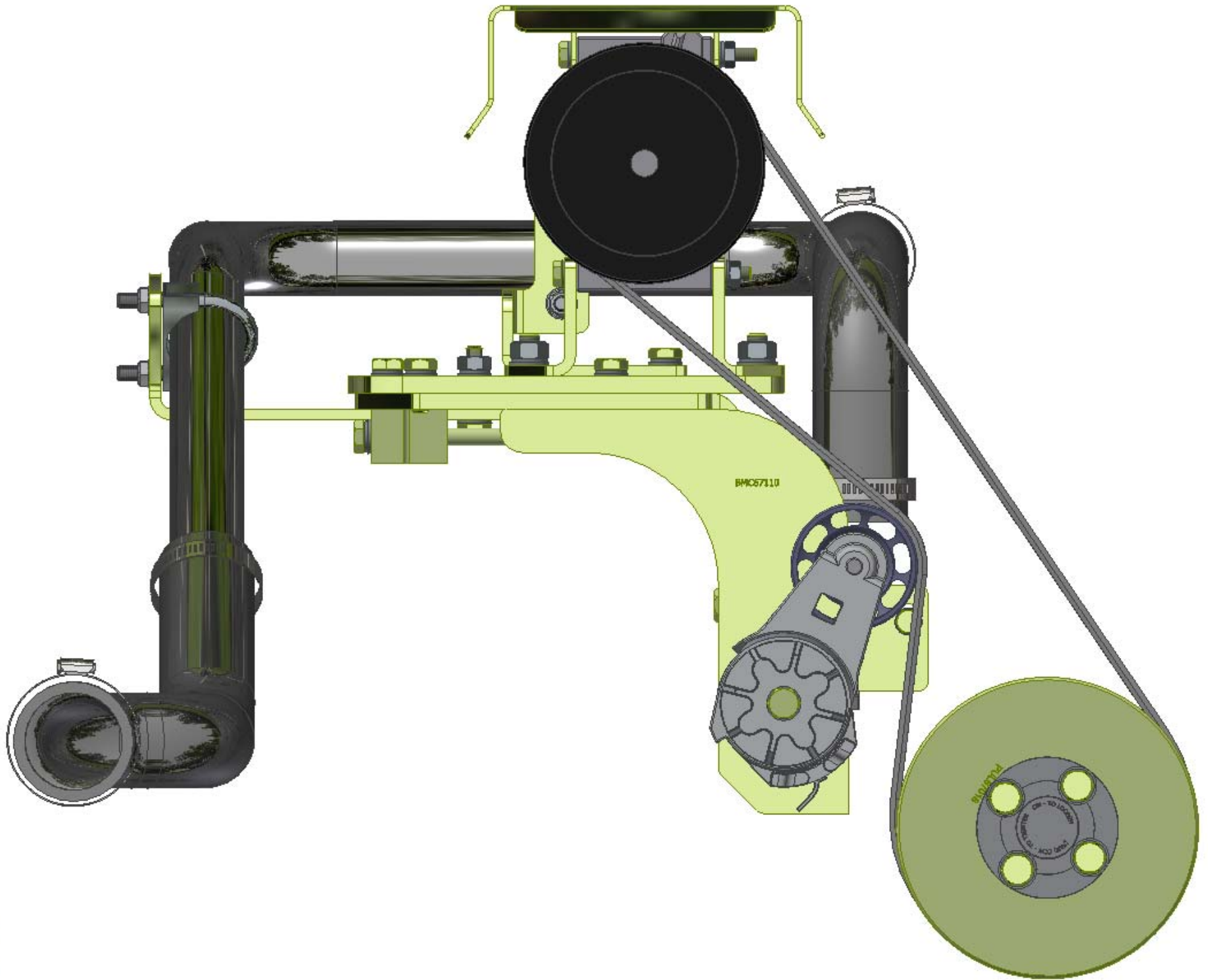
**KMC62701 TM43 TO TM21, 6.7L, IC, CONV.13**

REV 0

DATE: 2/2/2015  
DRAWING UNIT OF MEASURE: MM (INCH)  
SCALE: 1:1



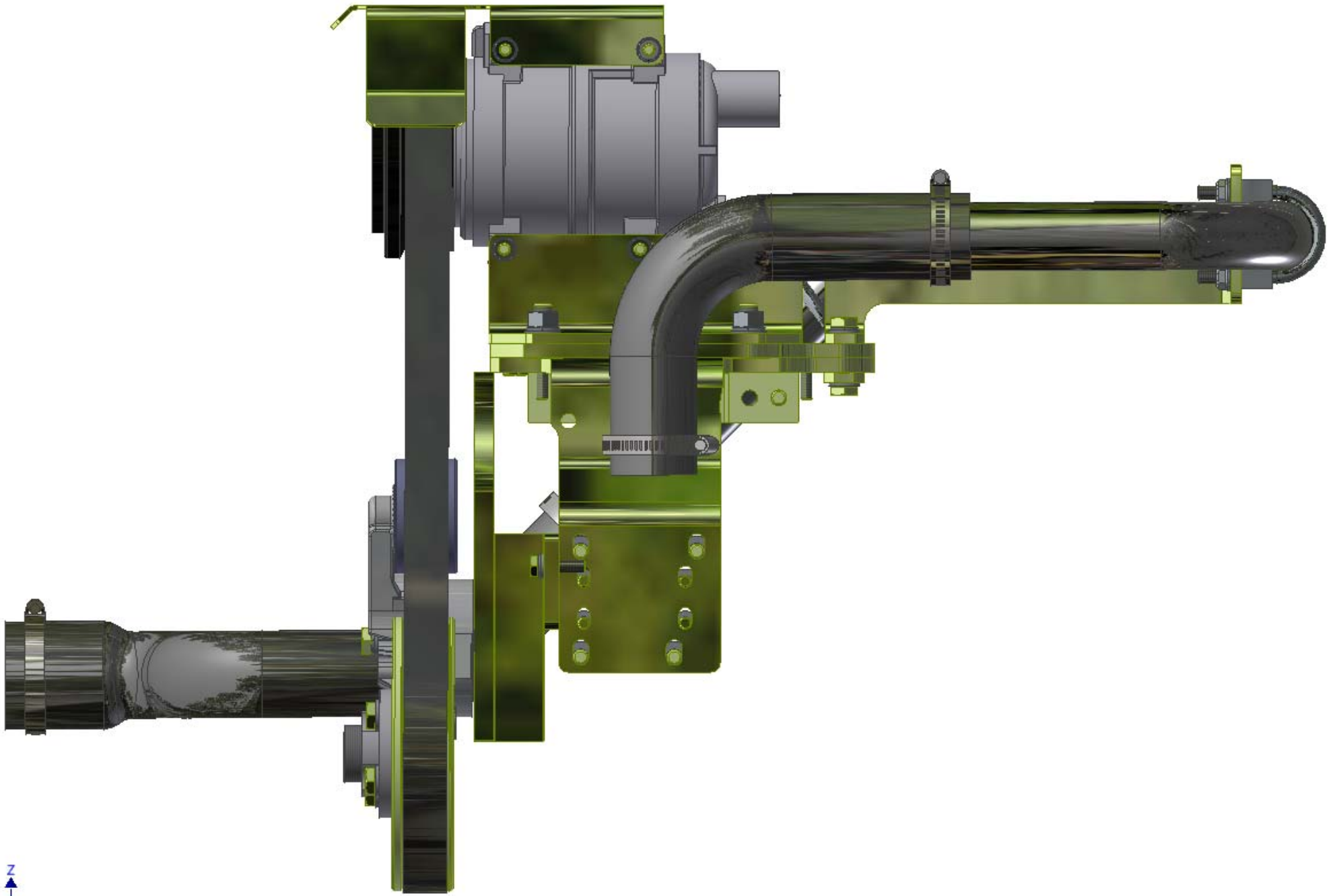




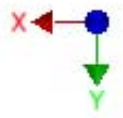
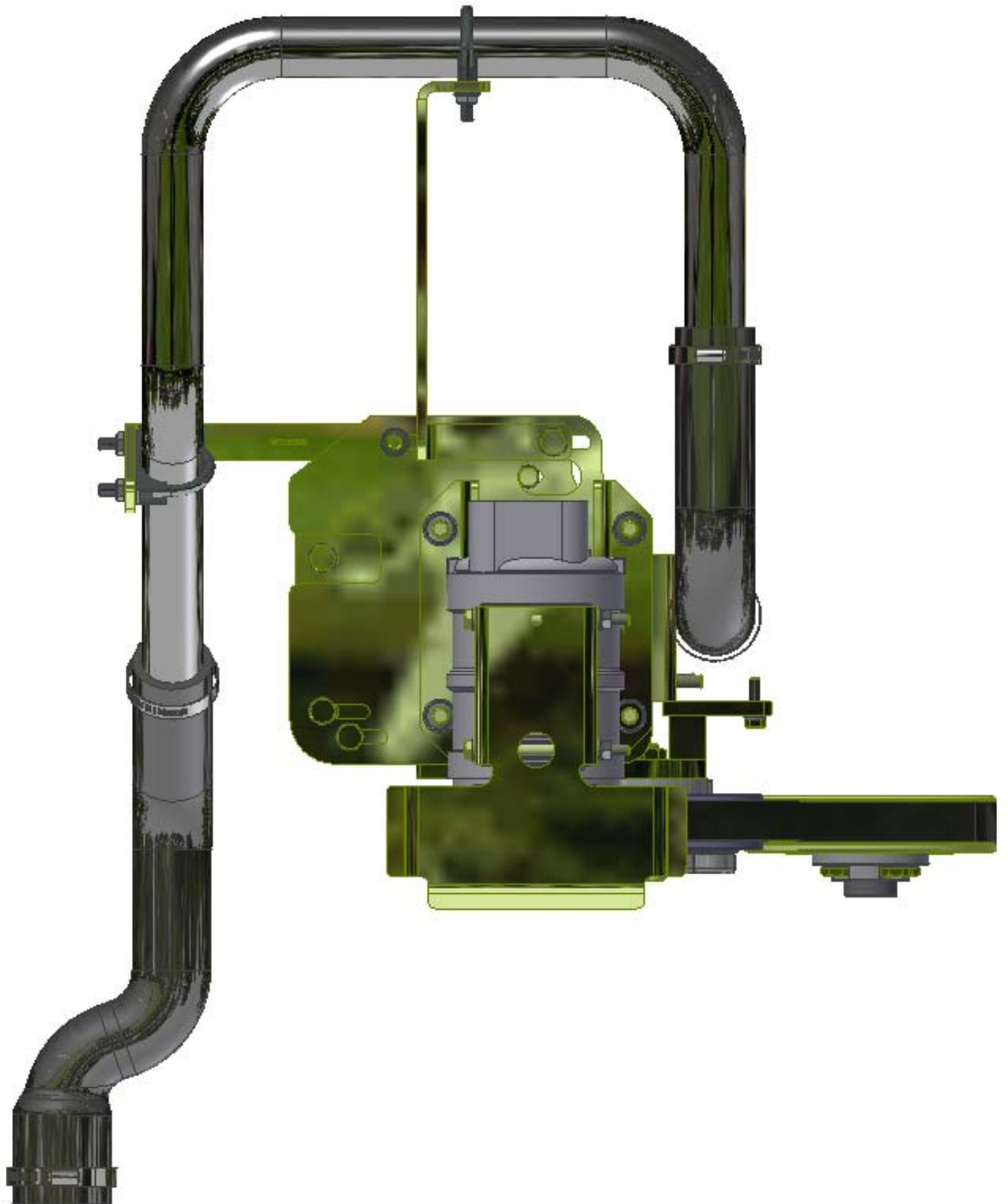
BMC67110

BMC67110  
ON - TO LAMP  
ON - TO LAMP  
ON - TO LAMP













## **TransArctic A/C Compressor Mount Installation Disclaimer**

All compressor mounts should be installed by qualified and trained personnel using proper tools and equipment in safe working conditions following industry standard guidelines for motor vehicle service and repair.

The installer of any compressor mount purchased from TransArctic must undertake all responsibility of issues arising from that compressor bracket being installed on any vehicle. As well as insure that a **proper and sufficient ground** is established between the compressors' clutches and the vehicle's engine. Mount functionality, operation and durability can all be compromised by an incompetent installation.

Due to the many different situations, parameters and application criteria, which are beyond the compressor mount manufacturer's control, TransArctic does not warrant design, durability, or operational functionality of any compressor mount improperly installed by another party.

**With no implied guarantees it is the mount installer's strict responsibility to determine safety and functionality, of the compressor mount, at the time of installation.**

Please contact TransArctic with any issue arising from installation so we may better improve the product. If you have any reservations about the compressor mount integrity contact TransArctic immediately at 1-877-COLD-AIR.

**Mark OEM tensioner location**

**Install Kit**

**Check for Interferences**

**Check to ensure that the proper OEM tensioner orientation is maintained**

**Run engine with A/C system engaged for at least 10 minutes to run in belt**

**Check OEM tensioner orientation and adjust as required**

### **Responsabilidad limitada de TransArctic en la instalación del soporte del compresor**

Todos los soportes de los compresores deben ser instalados por personas calificadas y entrenadas, usando para ello los equipos y herramientas necesarios para esta labor en buenas condiciones y según las normas y guías para el servicio y/o reparación de motores de vehículos.

El instalador de los soportes comprados en TransArctic asume toda la responsabilidad de cualquier problema que surja en el soporte del compresor al vehículo; de igual manera es responsable que el cable a tierra sea conectado entre el embrague del compresor y el motor del vehículo.

Se advierte que el buen funcionamiento y la durabilidad del soporte pueden ser comprometidos por defectos en su instalación.

Debido a las diversas situaciones que se puedan presentar fuera del control del fabricante, TransArctic no garantiza el diseño, la durabilidad o el correcto funcionamiento de cualquier equipo inapropiadamente instalado por terceros.

**Esta sobreentendido que el Instalador del montaje del compresor es estrictamente responsable de la seguridad y funcionamiento del equipo en el momento de la instalación.**

Si tuviera algún problema o duda acerca de la instalación del soporte del compresor pongase en contacto inmediatamente con TransArctic al teléfono 1-877-COLD-AIR de modo que podamos mejorar nuestro producto.

**Note la ubicación del medidor de tensión OEM**

**Instale el equipo**

**Controlar si hay interferencias.**

**Asegure que el medidor de tensión mantenga la orientación justa.**

**Encienda el motor por lo menos 10 minutos con el sistema A/C enganchado para que la correa corra**

**Controle la orientación justa del medidor de tensión y ajuste a las condiciones requeridas del fabricante**