

Bill of Materials Listing

TransArctic Canada Inc.

7/28/2020
Page 1 of 1

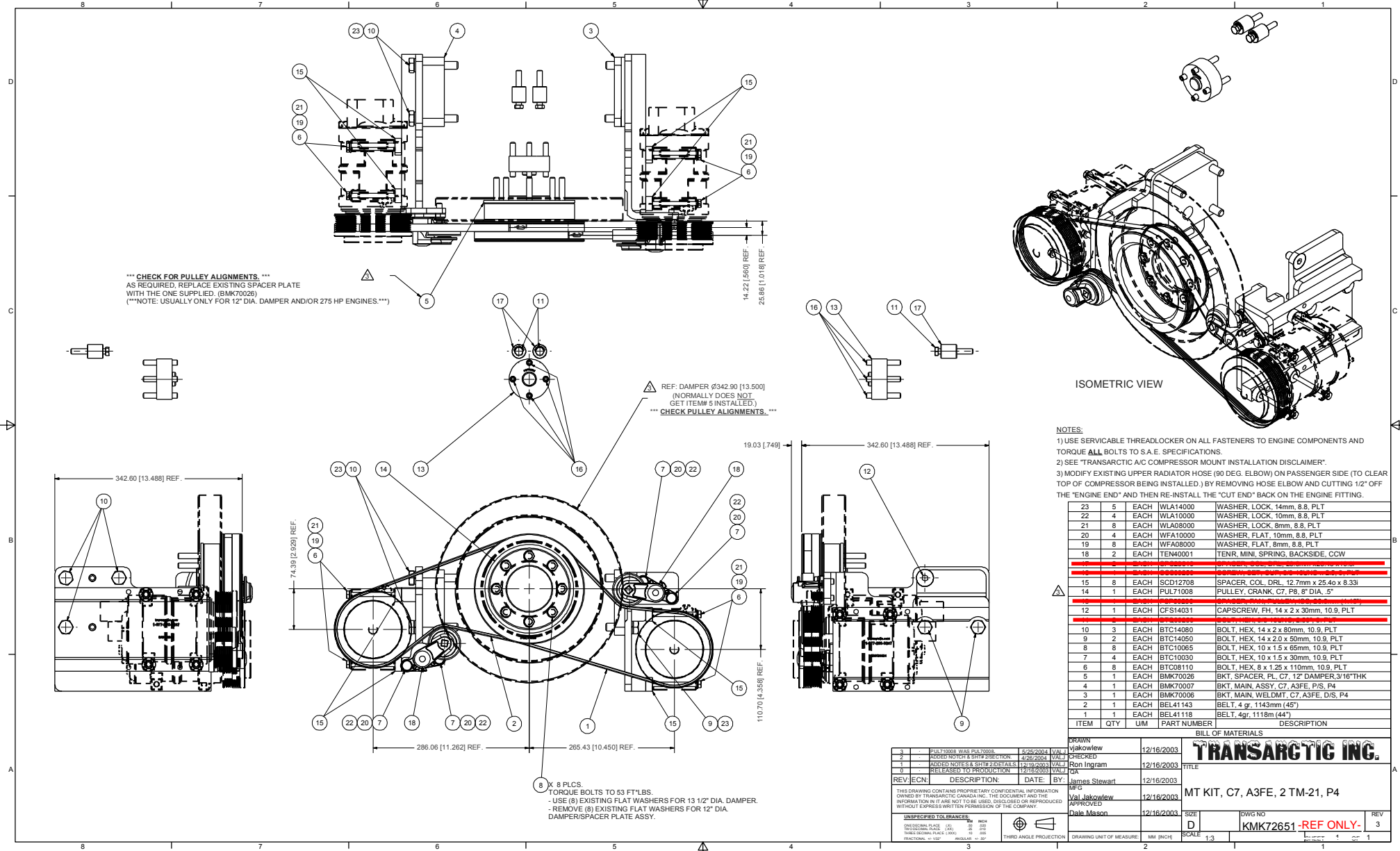
Product Number		Description	Rev#	Date	Weight	Uof M	Yield
Line	Component Prod#	Description	Bin	Unit	Qty		
KMK72690		Mt Kit, C7, HDX ER, 2 TM-21, P8		2/2/2004	326.39		0
10	BEL41092	Belt, 4gr, 1092mm (43.0") (5040430)		each	1		
20	BEL41144	Belt, 4gr, 1143mm (45.0") (450K4BU)		each	1		
30	BMK70006	Bkt, Main, Weldmt, C7, A3FE, D/S, P4		each	1		
40	BMK70007	Bkt, Main, Assy, C7, A3FE, P/S, P4		each	1		
50	BMK70011	Bkt, Brace, Support, C7, HDX, P8		each	1		
60	BMK70035	Bkt, Spacer, Pl, C7, 12" Damper, 1/4"Thk		each	1		
70	PUL71008	Pulley, Crank, C7, P8, 8" dia, .5"		each	1		
80	SCD12708	Spacer, Col, Drl, 12.7mm x 25.4o x 8.33i		each	8		
90	TEN40002	Tenr, Mini, Assy, Spring, BkSide, CCW		each	2		
100	TUS02005	Tube, Stl, Exh, 2"o.d., Straight, 5.0"		each	1		
110	HOR02002	Hose, Rad, 2" ID, 90 deg, 13.75"		each	1		
120	HOR02003	Hose, Rad, 2" ID, 110 deg		each	1		
130	CLP36001	Clamp, Gear, #36,1 13/16-2 3/4 (46/70mm)		each	2		
140	BAK72690	Bag Kit, Fasteners, KMK72690		each	1		

Bill of Materials Listing

TransArctic Canada Inc.

7/28/2020
Page 1 of 1

Product Number	Description	Rev#	Date	Weight	Uof M	Yield
Line	Component Prod#	Bin	Unit	Qty		
BAK72690	Bag Kit, Fasteners, KMK72690		9/13/2003	3.46		0
10	CSF14031		each	1		
20	BTC14080		each	3		
30	BTC14050		each	2		
40	BTC10065		each	8		
50	BTC10030		each	6		
60	BTC08110		each	8		
70	BTC08030		each	1		
80	WFA10000		each	4		
90	WFA08000		each	9		
100	WLA14000		each	5		
110	WLA10000		each	6		
120	WLA08000		each	9		



*** CHECK FOR PULLEY ALIGNMENTS. ***
 AS REQUIRED, REPLACE EXISTING SPACER PLATE
 WITH THE ONE SUPPLIED. (BMK70026)
 (**NOTE: USUALLY ONLY FOR 12" DIA. DAMPER AND/OR 275 HP ENGINES.**)

REF. DAMPER Ø342.90 [13.500]
 (NORMALLY DOES NOT
 GET ITEM# 5 INSTALLED)
 *** CHECK PULLEY ALIGNMENTS. ***

NOTES:
 1) USE SERVICABLE THREADLOCKER ON ALL FASTENERS TO ENGINE COMPONENTS AND TORQUE ALL BOLTS TO S.A.E. SPECIFICATIONS.
 2) SEE "TRANSARGTIC A/C COMPRESSOR MOUNT INSTALLATION DISCLAIMER".
 3) MODIFY EXISTING UPPER RADIATOR HOSE (90 DEG. ELBOW) ON PASSENGER SIDE (TO CLEAR TOP OF COMPRESSOR BEING INSTALLED,) BY REMOVING HOSE ELBOW AND CUTTING 1/2" OFF THE "ENGINE END" AND THEN RE-INSTALL THE "CUT END" BACK ON THE ENGINE FITTING.

ITEM	QTY	U/M	PART NUMBER	DESCRIPTION
23	5	EACH	WLA14000	WASHER, LOCK, 14mm, 8.8, PLT
22	4	EACH	WLA10000	WASHER, LOCK, 10mm, 8.8, PLT
21	8	EACH	WLA08000	WASHER, LOCK, 8mm, 8.8, PLT
20	4	EACH	WFA10000	WASHER, FLAT, 10mm, 8.8, PLT
19	8	EACH	WFA08000	WASHER, FLAT, 8mm, 8.8, PLT
18	2	EACH	TEN40001	TENR. MINI. SPRING, BACKSIDE, CCW
15	8	EACH	SCD12708	SPACER, COL, DRL, 12.7mm x 25.40 x 8.33
14	1	EACH	PUL71008	PULLEY, CRANK, C7, F8, Ø DIA, 5"
12	1	EACH	CFS14031	CAPSCREW, FH, 14 x 2 x 30mm, 10.9, PLT
10	3	EACH	BTC14080	BOLT, HEX, 14 x 2 x 80mm, 10.9, PLT
9	2	EACH	BTC14050	BOLT, HEX, 14 x 2.0 x 50mm, 10.9, PLT
8	8	EACH	BTC10065	BOLT, HEX, 10 x 1.5 x 65mm, 10.9, PLT
7	4	EACH	BTC10030	BOLT, HEX, 10 x 1.5 x 30mm, 10.9, PLT
6	8	EACH	BTC08110	BOLT, HEX, 8 x 1.25 x 110mm, 10.9, PLT
5	1	EACH	BMK70026	BKT, SPACER, PL, C7, 12" DAMPER, 3/16" THK
4	1	EACH	BMK70007	BKT, MAIN, ASSY, C7, A3FE, P/S, P4
3	1	EACH	BMK70006	BKT, MAIN, WELDMT, C7, A3FE, D/S, P4
2	1	EACH	BEL41143	BELT, 4 gr, 1143mm (45")
1	1	EACH	BEL41118	BELT, 4gr, 1118mm (44")

REV	ECN	DESCRIPTION	DATE	BY
3		FILE 11008 WAS PUL7000	4/25/2004	VAJ
2		ADDED NOTES & SHIP 2 DETAILS	4/26/2004	VAJ
1		RELEASED TO PRODUCTION	12/16/2003	VAJ
0		RELEASED TO PRODUCTION	12/16/2003	VAJ

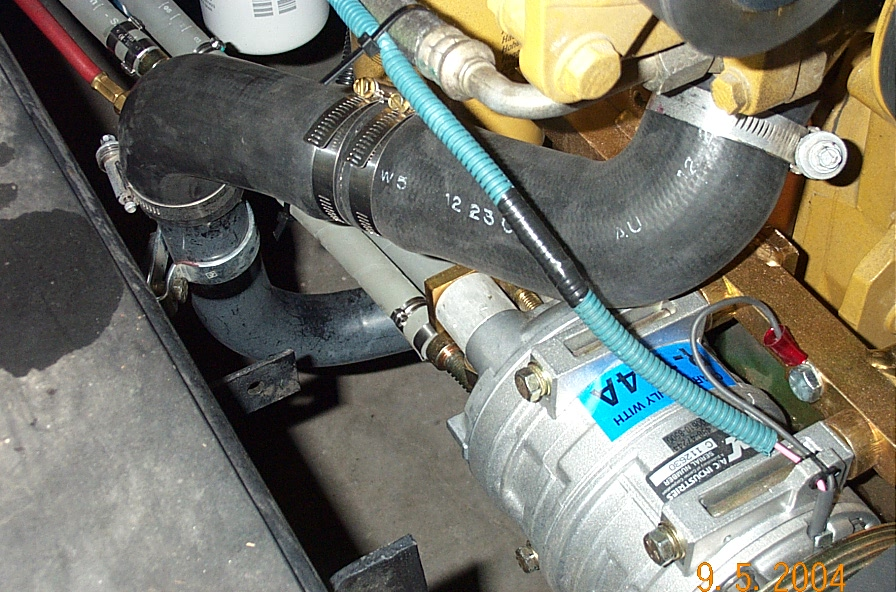
REV	DATE	BY	DESCRIPTION
12/16/2003		James Stewart	MFC
12/16/2003		Vaj, Jakowlew	APPROVED
12/16/2003		Dale Mason	APPROVED

UNSPECIFIED TOLERANCES:	FRAC	DEC	ANG
FRACTIONAL	±.001	±.005	±.01
DECIMAL	±.001	±.005	±.01
ANGULAR	±.01	±.01	±.01



DRAWING UNIT OF MEASURE	MM (INCH)
SCALE	1:3
DWG NO	KMK72651 - REF ONLY
REV	3

NOTE:
 ITEMS 11, 13, 16 & 17 ARE NOT UTILIZED IN THE "HDX" KIT.





BMK70011

KRL114

TUS02005

9.5.2004



NOTCH

NOTCH



TransArctic A/C Compressor Mount Installation Disclaimer

All compressor mounts should be installed by qualified and trained personnel using proper tools and equipment in safe working conditions following industry standard guidelines for motor vehicle service and repair.

The installer of any compressor mount purchased from TransArctic must undertake all responsibility of issues arising from that compressor bracket being installed on any vehicle. As well as insure that a **proper and sufficient ground** is established between the compressors' clutches and the vehicle's engine. Mount functionality, operation and durability can all be compromised by an incompetent installation.

Due to the many different situations, parameters and application criteria, which are beyond the compressor mount manufacturer's control, TransArctic does not warrant design, durability, or operational functionality of any compressor mount improperly installed by another party.

With no implied guarantees it is the mount installer's strict responsibility to determine safety and functionality, of the compressor mount, at the time of installation.

Please contact TransArctic with any issue arising from installation so we may better improve the product. If you have any reservations about the compressor mount integrity contact TransArctic immediately at 1-877-COLD-AIR.

Mark OEM tensioner location

Install Kit

Check for Interferences

Check to ensure that the proper OEM tensioner orientation is maintained

Run engine with A/C system engaged for at least 10 minutes to run in belt

Check OEM tensioner orientation and adjust as required

Responsabilidad limitada de TransArctic en la instalación del soporte del compresor

Todos los soportes de los compresores deben ser instalados por personas calificadas y entrenadas, usando para ello los equipos y herramientas necesarios para esta labor en buenas condiciones y según las normas y guías para el servicio y/o reparación de motores de vehículos.

El instalador de los soportes comprados en TransArctic asume toda la responsabilidad de cualquier problema que surja en el soporte del compresor al vehículo; de igual manera es responsable que el cable a tierra sea conectado entre el embrague del compresor y el motor del vehículo.

Se advierte que el buen funcionamiento y la durabilidad del soporte pueden ser comprometidos por defectos en su instalación.

Debido a las diversas situaciones que se puedan presentar fuera del control del fabricante, TransArctic no garantiza el diseño, la durabilidad o el correcto funcionamiento de cualquier equipo inapropiadamente instalado por terceros.

Esta sobreentendido que el Instalador del montaje del compresor es estrictamente responsable de la seguridad y funcionamiento del equipo en el momento de la instalación.

Si tuviera algún problema o duda acerca de la instalación del soporte del compresor pongase en contacto inmediatamente con TransArctic al teléfono 1-877-COLD-AIR de modo que podamos mejorar nuestro producto.

Note la ubicación del medidor de tensión OEM

Instale el equipo

Controlar si hay interferencias.

Asegurese que el medidor de tensión mantenga la orientación justa.

Encienda el motor por lo menos 10 minutos con el sistema A/C enganchado para que la correa corra

Controle la orientación justa del medidor de tensión y ajuste a las condiciones requeridas del fabricante