

Bill of Materials Listing

TransArctic Canada Inc.

3/16/2009
Page 1 of 1

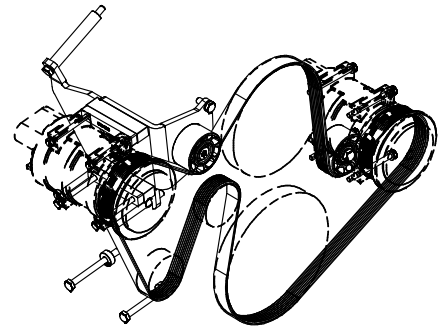
| Product Number | Description | Date | Weight | Uof M | Yield |
|---|---|------------------|--------------|-------|----------|
| Line Component Prod# Description | Bin | Unit | Qty | | |
| KMM62602 | Mt Kit, 7.2L MBE926, TH C2, 2 TM-21, '07 | 2/22/2007 | 16.09 | | 0 |
| 10 BEL82388 | Belt, 8gr, 2388mm (94.0") (5080940) | each | 1 | | |
| 20 BMM60045 | Bkt, Main, Weldmt, TM-21, C2, MBE926,'07 | each | 1 | | |
| 25 BMS16023 | Bkt, 12.7mm Spacer Plate | each | 2 | | |
| 30 PUL80076 | Pulley, Idler, Backside, P8, 76d (89062) | each | 2 | | |
| 40 SCD12010 | Spacer, Col, Drl, 11.6mm x19.05o x10.32i | each | 1 | | |
| 50 SCD09512 | Spacer, Col, Drl, 9.53mm x 25.4o x12.32i | each | 1 | | |
| 60 SCD09510 | Spacer, Col, Drl, 9.53mm x 25.4o x10.32i | each | 2 | | |
| 70 SLV17012 | Sleeve, Pulley, 16.9o x 22.23mm x 12.32i | each | 1 | | |
| 75 FTS10198 | Fitting, Manifold, GMpadMount, VOR, dwn, MIO | each | 1 | | |
| 80 KBM62602 | Bag Kit, Fasteners, KMM62602/62000/72690 | each | 1 | | |

Bill of Materials Listing

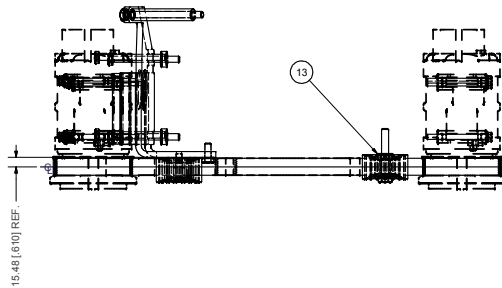
TransArctic Canada Inc.

3/16/2009
Page 1 of 1

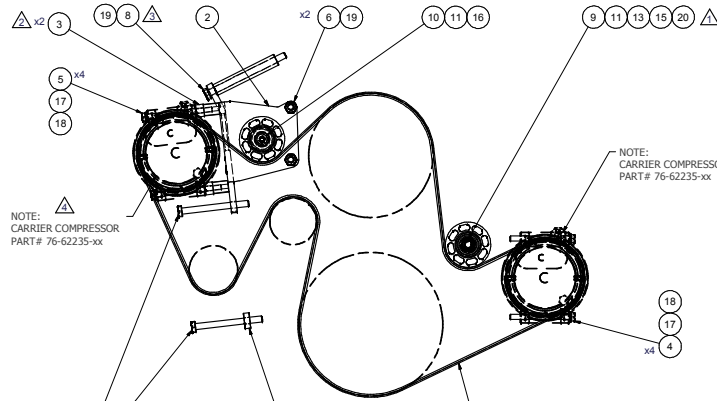
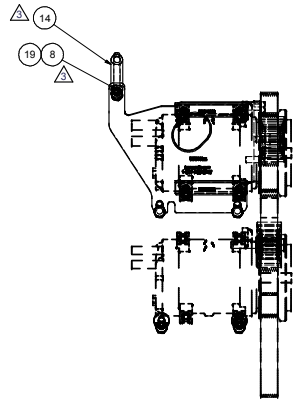
| Product Number | Description | Date | Weight | Uof M | Yield |
|----------------------------|---|-----------------------------|-------------|-------|----------|
| Line Component Prod# | Description | Bin Unit | Qty | | |
| KBM62602 | Bag Kit, Fasteners, KMM62602/62000/72690 | 2/26/2007 | 1.94 | | 0 |
| 5 | BTC12080 Bolt, Hex, 12 x 1.75 x 80mm, 10.9,Plt,FT | each | 1 | | |
| 10 | BTC10140 Bolt, Hex, 10 x 1.5 x 140mm, 10.9, Plt | each | 1 | | |
| 20 | BTC10110 Bolt, Hex, 10 x 1.5 x 110mm, 10.9, Plt | each | 4 | | |
| 40 | BTC10025 Bolt, Hex, 10 x 1.5 x 25mm, 10.9, Plt | each | 2 | | |
| 50 | BTC08110 Bolt, Hex, 8 x 1.25 x 110mm, 10.9, Plt | each | 4 | | |
| 55 | BTC08100 Bolt, Hex, 8 x 1.25 x 100mm, 10.9, Plt | each | 4 | | |
| 60 | BTS10001 Bolt, Shoulder, 10mm (89064) | each | 1 | | |
| 70 | WDS17001 Washer, Dust Cover (89060) | each | 1 | | |
| 80 | WFA08000 Washer, Flat, 8mm, 8.8, Plt | each | 8 | | |
| 90 | WLA08000 Washer, Lock, 8mm, 8.8, Plt | each | 8 | | |
| 100 | WLA10000 Washer, Lock, 10mm, 8.8, Plt | each | 3 | | |
| 110 | WLA12000 Washer, Lock, 12mm, 8.8, Plt | each | 1 | | |



ISOMETRIC VIEW



15.48 [6.10] REF.



NOTE:
CARRIER COMPRESSOR
PART# 76-62235-xx

NOTE:
CARRIER COMPRESSOR
PART# 76-62235-xx

x4 7 - REPLACE EXISTING ALT. BOLTS
AND REUSE REMAINDER OF
EXISTING HARDWARE.

NOTE:
FOR A CANADIAN STYLE BUS,
THE INSTALLER WILL NEED TO
ACQUIRE AND USE A ONE INCH
SHORTER IN LENGTH BELT IN
LIEU OF THE BELT SUPPLIED IN
THIS MOUNT KIT.

NOTES:

- 1) USE SERVICABLE THREADLOCKER ON ALL FASTENERS TO ENGINE COMPONENTS AND TORQUE ALL BOLTS TO S.A.E. SPECIFICATIONS.
- 2) SEE "TRANSARCTIC A/C COMPRESSOR MOUNT INSTALLATION DISCLAIMER".

| ITEM | QTY | U/M | PART NUMBER | DESCRIPTION |
|------|-----|------|-------------|---|
| 20 | 1 | EACH | WLA12000 | WASHER, LOCK, 12mm, 8.8, PLT |
| 19 | 3 | EACH | WLA10000 | WASHER, LOCK, 10mm, 8.8, PLT |
| 18 | 8 | EACH | WLA08000 | WASHER, LOCK, 8mm, 8.8, PLT |
| 17 | 8 | EACH | WFA08000 | WASHER, FLAT, 8mm, 8.8, PLT |
| 16 | 1 | EACH | WDS17001 | WASHER, DUST COVER (PUL80076) |
| 15 | 1 | EACH | SLV17012 | SLEEVE, PULLEY, 16.90 x 22.23 mm x12.19l |
| 14 | 1 | EACH | SCD12010 | SPACER, COL, DRL, 111.6mm x19.05x x10.32l |
| 13 | 1 | EACH | SCD09512 | SPACER, COL, DRL, 9.53mm x 25.40 x12.32l |
| 12 | 2 | EACH | SCD09510 | SPACER, COL, DRL, 9.53mm x 25.40 x10.32l |
| 11 | 2 | EACH | PUL80076 | PULLEY, IDLER, BACKSIDE, P8, 76D, 39W |
| 10 | 1 | EACH | BTS10001 | BOLT, SHOULDER, 10mm (IDLER PULLEY) |
| 9 | 1 | EACH | BTC12080 | BOLT, HEX, 12 x 1.75 x 80mm, 10.9, PLT |
| 8 | 1 | EACH | BTC10140 | BOLT, HEX, 10 x 1.5 x 140mm, 10.9, PLT |
| 7 | 4 | EACH | BTC10110 | BOLT, HEX, 10 x 1.5 x 110mm, 10.9, PLT |
| 6 | 2 | EACH | BTC10025 | BOLT, HEX, 10 x 1.5 x 25mm, 10.9, PLT |
| 5 | 4 | EACH | BTC08110 | BOLT, HEX, 8 x 1.25 x 110mm, 10.9, PLT |
| 4 | 4 | EACH | BTC08100 | BOLT, HEX, 8 x 1.25 x 100mm, 10.9, PLT |
| 3 | 2 | EACH | BMS16023 | BKT, 12.7mm SPACER PLATE |
| 2 | 1 | EACH | BMM60045 | BKT, MAIN, WELDMT, TM-21, C2, MBE926, 07 |
| 1 | 1 | EACH | BEL82388 | BELT, 8 GR, 2388mm (94") (5080940) |

BILL OF MATERIAL

| | | | | | |
|-----|---------------------------|-------------|------|---------------|-----------|
| 4 | ADDED BELT NOTE & COMP ID | 3/16/2007 | VAL | DRAWN | 2/26/2007 |
| 3 | WAS SCD2010, BTC10130 | 11/9/2007 | VAL | CHECKED | 2/26/2007 |
| 2 | ADDED BMS16023 | 1/25/2007 | BRAR | OK | |
| 1 | ADDED SCD09512 | 6/14/2007 | BRAR | OK | |
| 3 | RELEASED TO PRODUCTION | 2/26/2007 | VAL | OK | |
| REV | ECN | DESCRIPTION | DATE | BY | |
| | | | | James Stewart | 2/26/2007 |
| | | | | Ron Ingram | 2/26/2007 |
| | | | | Dale Mason | 2/26/2007 |

THIS DRAWING CONTAINS PROPRIETARY CONFIDENTIAL INFORMATION OWNED BY TRANSARCTIC CANADA INC. THE DOCUMENT AND THE INFORMATION IN IT ARE NOT TO BE USED, DISCLOSED OR REPRODUCED WITHOUT EXPRESS WRITTEN PERMISSION OF THE COMPANY.

UNSPECIFIED TOLERANCES: (ALL DIM) .005 (FRACTIONAL) .005 (DECIMAL) .005 (FRACTIONAL) .005 (DECIMAL)

THIRD ANGLE PROJECTION

DRAWING UNIT OF MEASURE: MM (INCH)

SCALE: 1:4

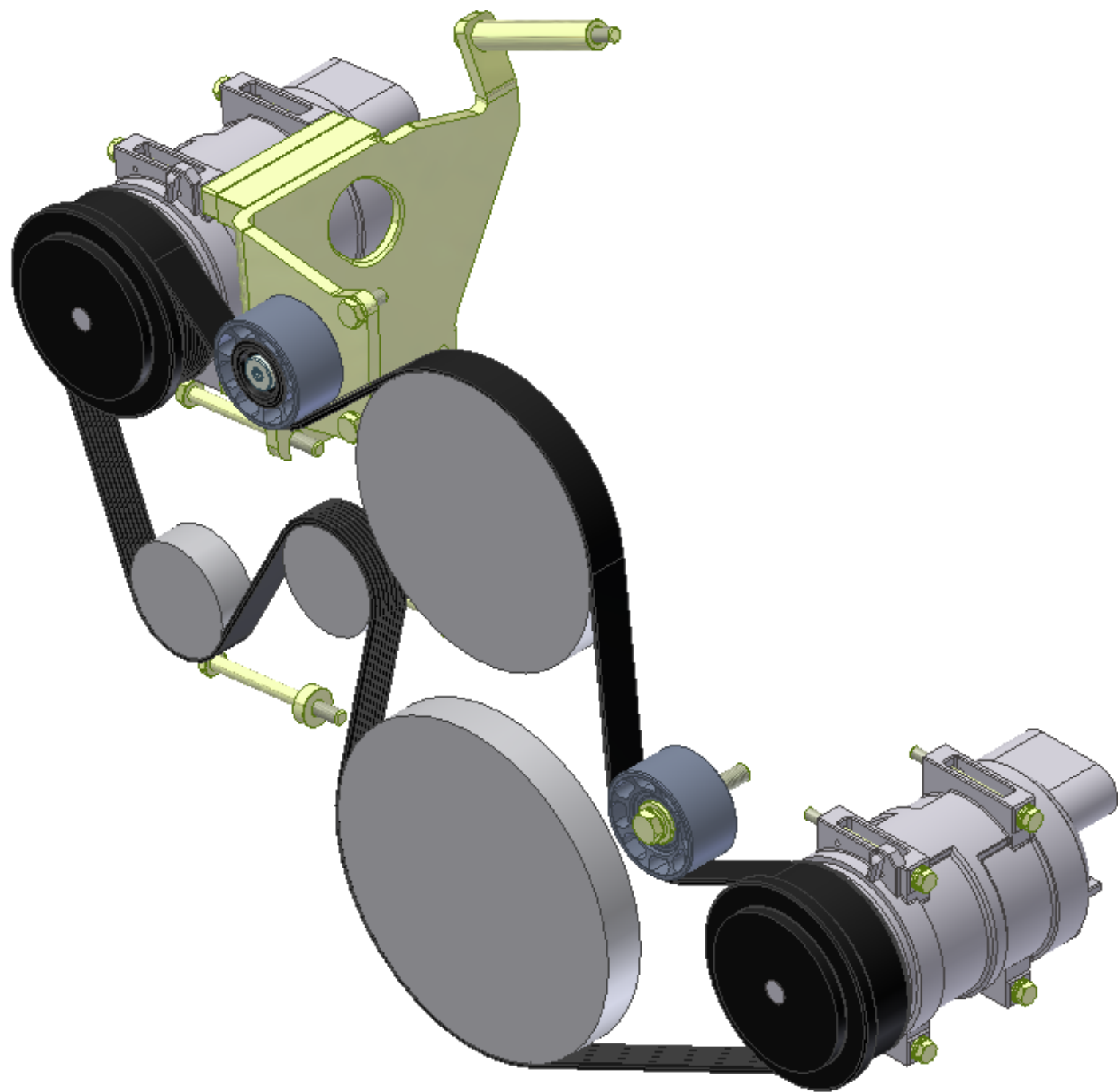
DWG NO: KMM62602

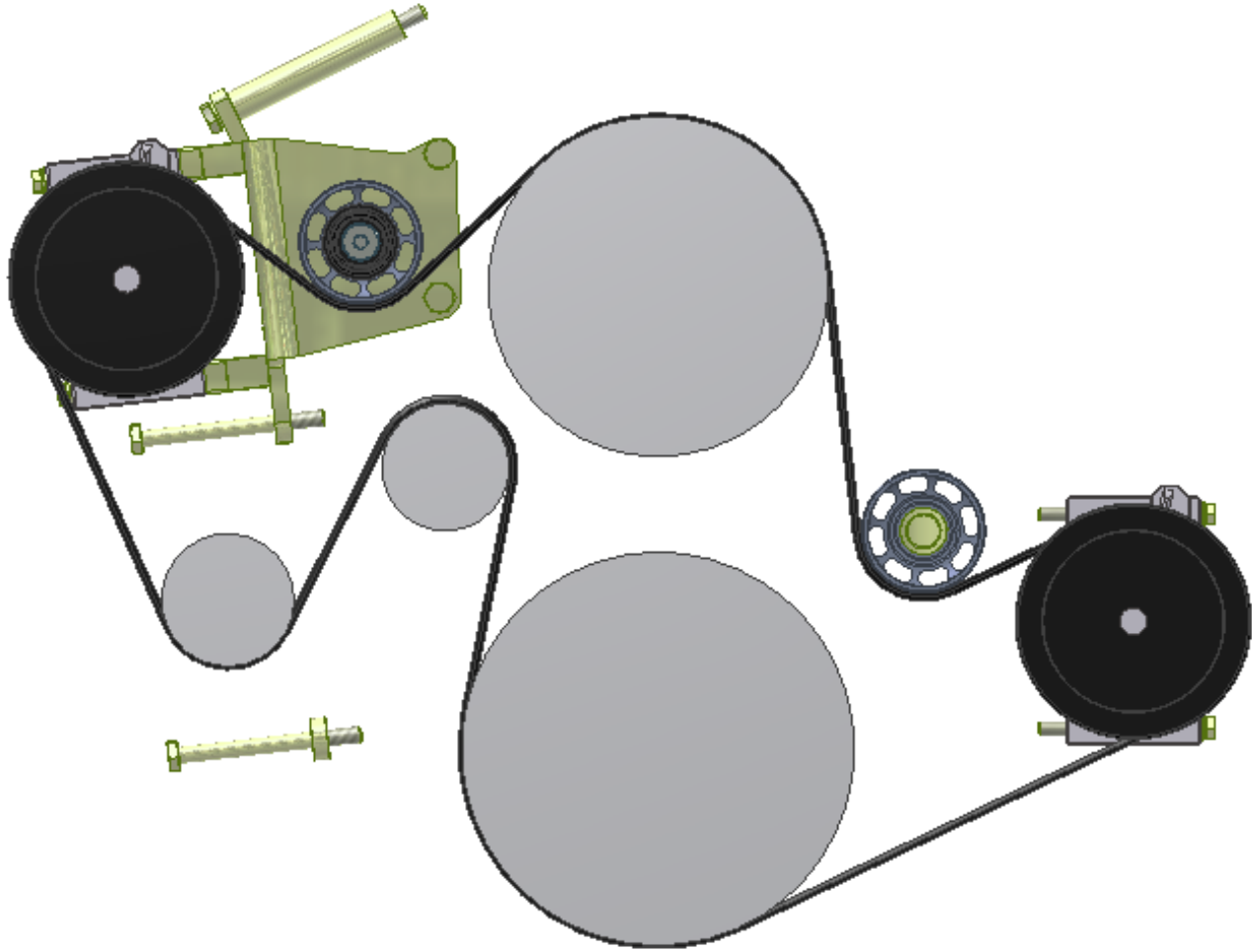
REV: 4

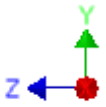
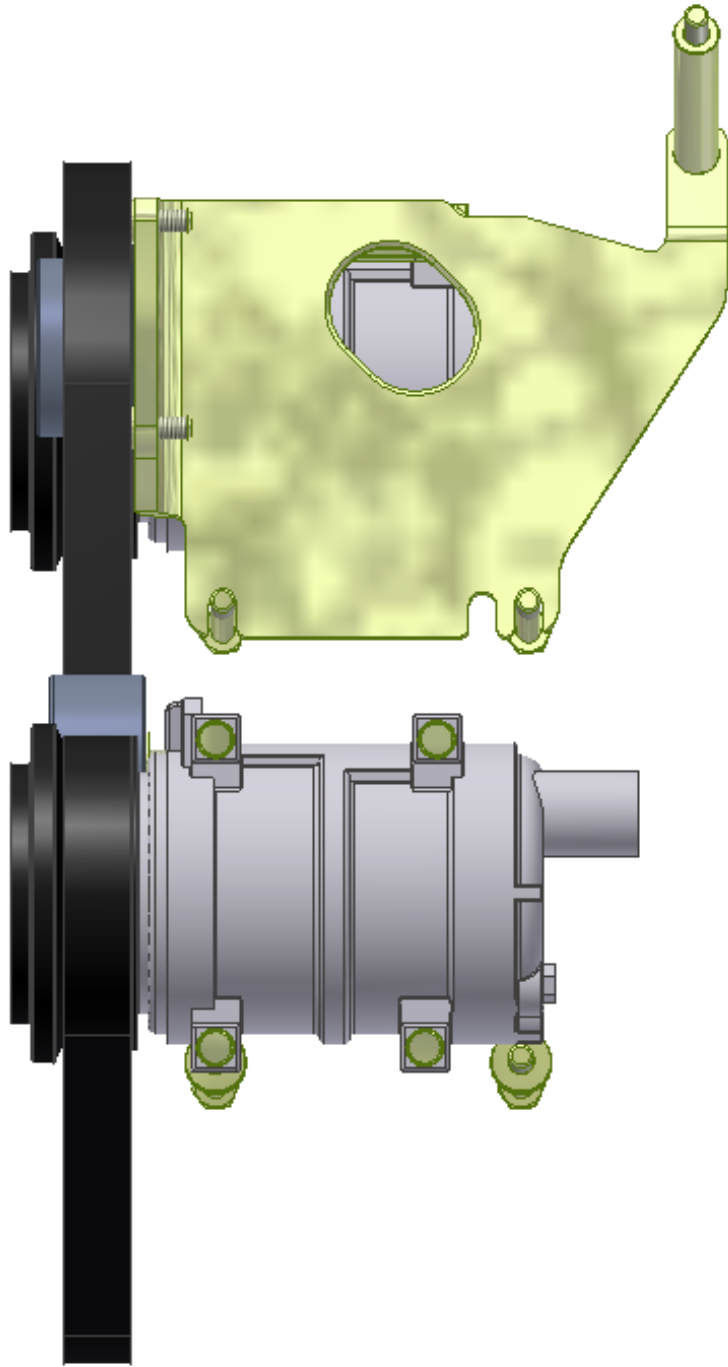
SHEET 1 OF 1

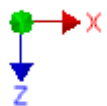
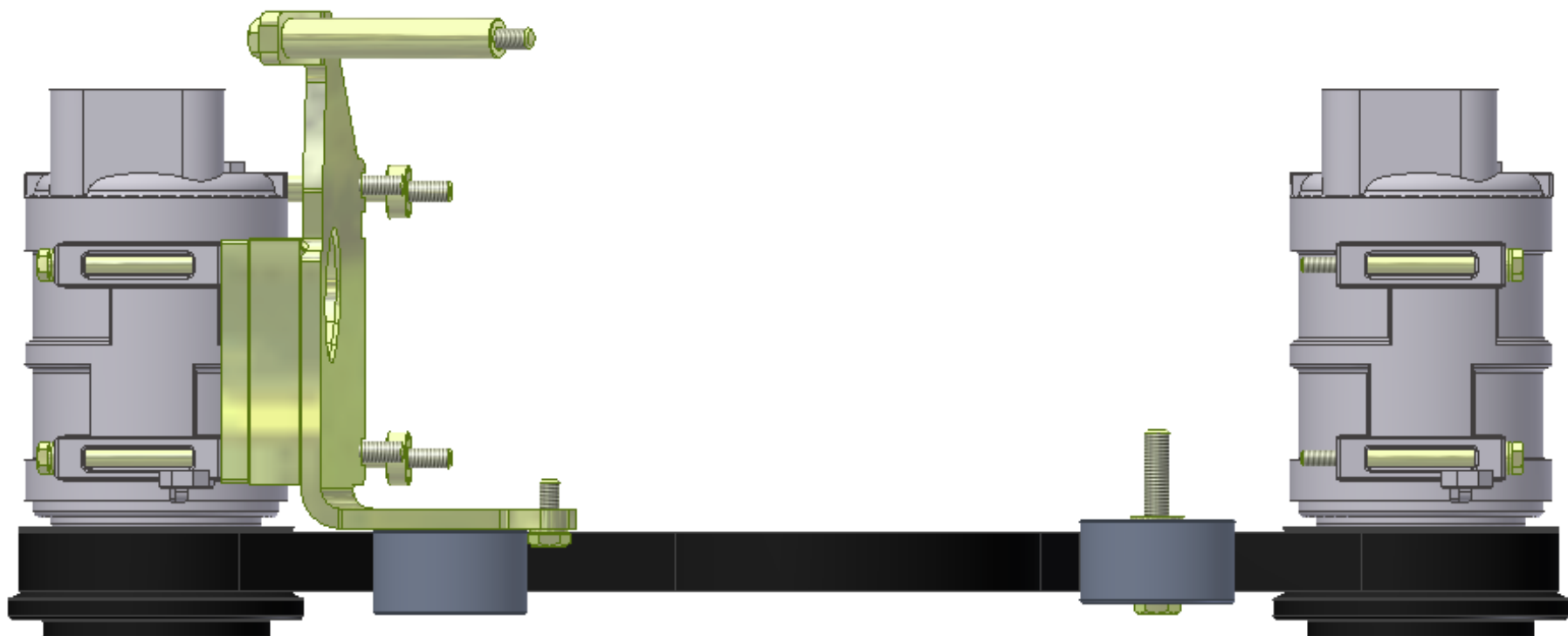
TRANSARCTIC INC.

Mt kit, 7.2L MBE926, TH C2, 2 TM-21, '07









TransArctic A/C Compressor Mount Installation Disclaimer

All compressor mounts should be installed by qualified and trained personnel using proper tools and equipment in safe working conditions following industry standard guidelines for motor vehicle service and repair.

The installer of any compressor mount purchased from TransArctic must undertake all responsibility of issues arising from that compressor bracket being installed on any vehicle. As well as insure that a **proper and sufficient ground** is established between the compressors' clutches and the vehicle's engine. Mount functionality, operation and durability can all be compromised by an incompetent installation.

Due to the many different situations, parameters and application criteria, which are beyond the compressor mount manufacturer's control, TransArctic does not warrant design, durability, or operational functionality of any compressor mount improperly installed by another party.

With no implied guarantees it is the mount installer's strict responsibility to determine safety and functionality, of the compressor mount, at the time of installation.

Please contact TransArctic with any issue arising from installation so we may better improve the product. If you have any reservations about the compressor mount integrity contact TransArctic immediately at 1-877-COLD-AIR.