

Bill of Materials Listing

TransArctic Canada Inc.

5/8/2009
Page 1 of 1

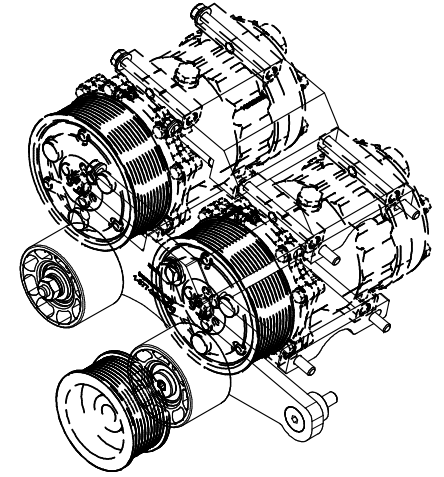
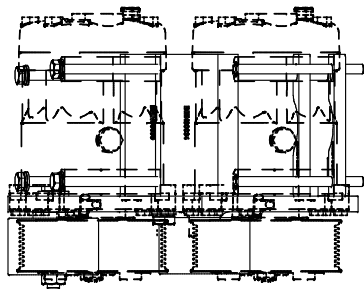
Product Number	Description	Date	Weight	Uof M	Yield
Line Component Prod#	Description	Bin Unit	Qty		
KMN82020	Mt. Kit, MF DT, FE300, 2 TM-16, 07-09		2/22/2008	12.21	0
10 BMN80034	Bkt, Comp, Upper, CE200		each	1	
20 BMN80035	Bkt, Comp, Lower, CE300		each	1	
30 BMN80066	Bkt, Idler, Slot PL, Weldmnt, FE300, '09		each	1	
50 PUL80074	Pulley, Idler, B/S, Wide, 76d (89102)		each	2	
52 BEL02615	Belt, 10gr, 2615mm (103")		each	1	
60 KBN82620	Bag Kit, Fasteners, KMN82620/2020		each	1	
61 BMS16022	Bkt, TM-16 Spacer Plate		each	2	
62 SCD14010	Spacer, Col, Drl, 14mm x25.4o x10.32i		each	1	
64 SCD20010	Spacer, Col, Drl, 20mm x 33.34o x 10.32i		each	1	
66 SLV17010	Sleeve, Pulley, 16.9o x 22.23mm x 10.32i		each	1	

Bill of Materials Listing

TransArctic Canada Inc.

3/17/2009
Page 1 of 1

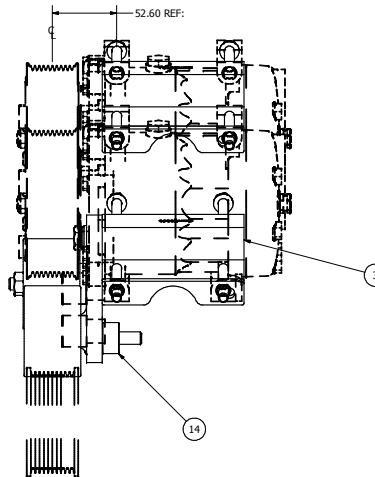
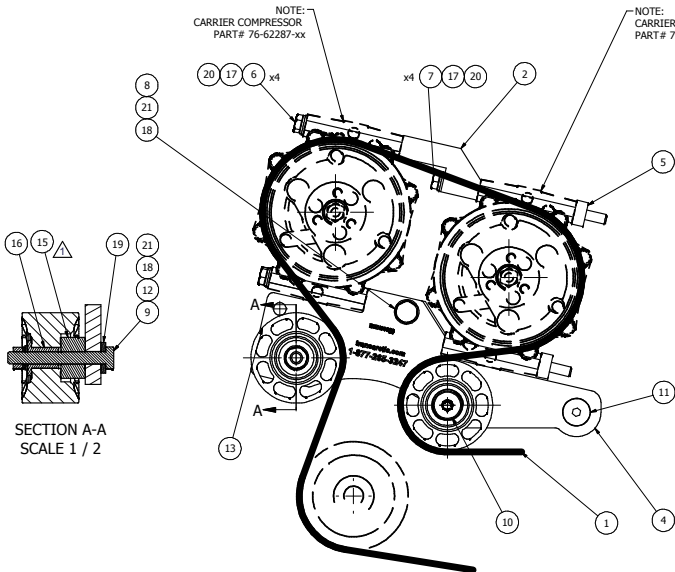
Product Number	Description	Date	Weight	Uof M	Yield
Line Component Prod#	Description	Bin Unit	Qty		
KBN82620	Bag Kit, Fasteners, KMN82620/2020		5/3/2007	1.25	0
10	BTC08100	Bolt, Hex, 8 x 1.25 x 100mm, 10.9, Plt	each	4	
20	BTC08140	Bolt, Hex, 8 x 1.25 x 140mm, 10.9, Plt	each	4	
21	BTC10080	Bolt, Hex, 10 x 1.5 x 80mm, 10.9, Plt,FT	each	1	
30	BTC10040	Bolt, Hex, 10 x 1.5 x 40mm, 10.9, Plt,FT	each	1	
40	CSF10046	Capscrew, FH, 10 x 1.5 x 45mm, 10.9,Plt	each	1	
50	WFA08000	Washer, Flat, 8mm, 8.8, Plt	each	8	
60	WLA08000	Washer, Lock, 8mm, 8.8, Plt	each	8	
62	NTA10000	Nut, Hex, 10 x 1.5, 8.8, Plt	each	1	
70	WFA10000	Washer, Flat, 10mm, 8.8, Plt	each	2	
80	WLA10000	Washer, Lock, 10mm, 8.8, Plt	each	2	
85	WFA10002	Washer, Flat, 10mm, Hvy, 8.8, Plt	each	1	
90	BTS10001	Bolt, Shoulder, 10mm (89064)	each	1	



ISOMETRIC VIEW

NOTE: CARRIER COMPRESSOR PART # 76-62287-xx

NOTE: CARRIER COMPRESSOR PART # 76-62287-xx



NOTES:
 1) USE SERVICABLE THREADLOCKER ON ALL FASTENERS TO ENGINE COMPONENTS AND TORQUE ALL BOLTS TO S.A.E. SPECIFICATIONS.
 2) SEE "TRANSARCATIC A/C COMPRESSOR MOUNT INSTALLATION DISCLAIMER".

ITEM	QTY	U/M	PART NUMBER	DESCRIPTION
21	2	EACH	WLA10000	WASHER, LOCK, 10mm, 8.8, PLT
20	8	EACH	WLA08000	WASHER, LOCK, 8mm, 8.8, PLT
19	1	EACH	WFA10002	WASHER, FLAT, 10mm, HVY, 8.8, PLT
18	2	EACH	WFA10000	WASHER, FLAT, 10mm, 8.8, PLT
17	8	EACH	WFA08000	WASHER, FLAT, 8mm, 8.8, PLT
16	1	EACH	SLV17010	SLEEVE, PULLEY, 16.9o x 22.23mm x 10.32i
15	1	EACH	SCD20010	SPACER, COL., 20mm x 33.34o x 10.32i
14	1	EACH	SCD14010	SPACER, COL., DRL, 14mm x 25.4o x 10.32i
13	2	EACH	PUL80074	PULLEY, IDLER, BACKSIDE, P8, 74D, 46.27W
12	1	EACH	NTA10000	NUT, HEX, 10 x 1.5, 8.8, PLT
11	1	EACH	CSF10046	CAPSCREW, FH, 10 x 1.5 x 45mm, 10.9, PLT
10	1	EACH	BTS10001	BOLT, SHOULDER, 10mm (IDLER PULLEY)
9	1	EACH	BTC10080	BOLT, HEX, 10 x 1.5 x 80mm, 10.9, PLT, FT
8	1	EACH	BTC10040	BOLT, HEX, 10 x 1.5 x 40mm, 10.9, PLT
7	4	EACH	BTC08140	BOLT, HEX, 8 x 1.25 x 140mm, 10.9, PLT
6	4	EACH	BTC08100	BOLT, HEX, 8 x 1.25 x 100mm, 10.9, PLT
5	2	EACH	BMS16022	BKT, TM-16, SPACER PLATE
4	1	EACH	BMN80066	BKT, IDLER, WELDMENT, FE300, 07-09
3	1	EACH	BMN80035	BKT, COMP, LOWER, CE300
2	1	EACH	BMN80034	BKT, COMP, UPPER, CE300
1	1	EACH	BELO2615	BELT, 10gr, 2615mm (103")

TRANSARCATIC INC.

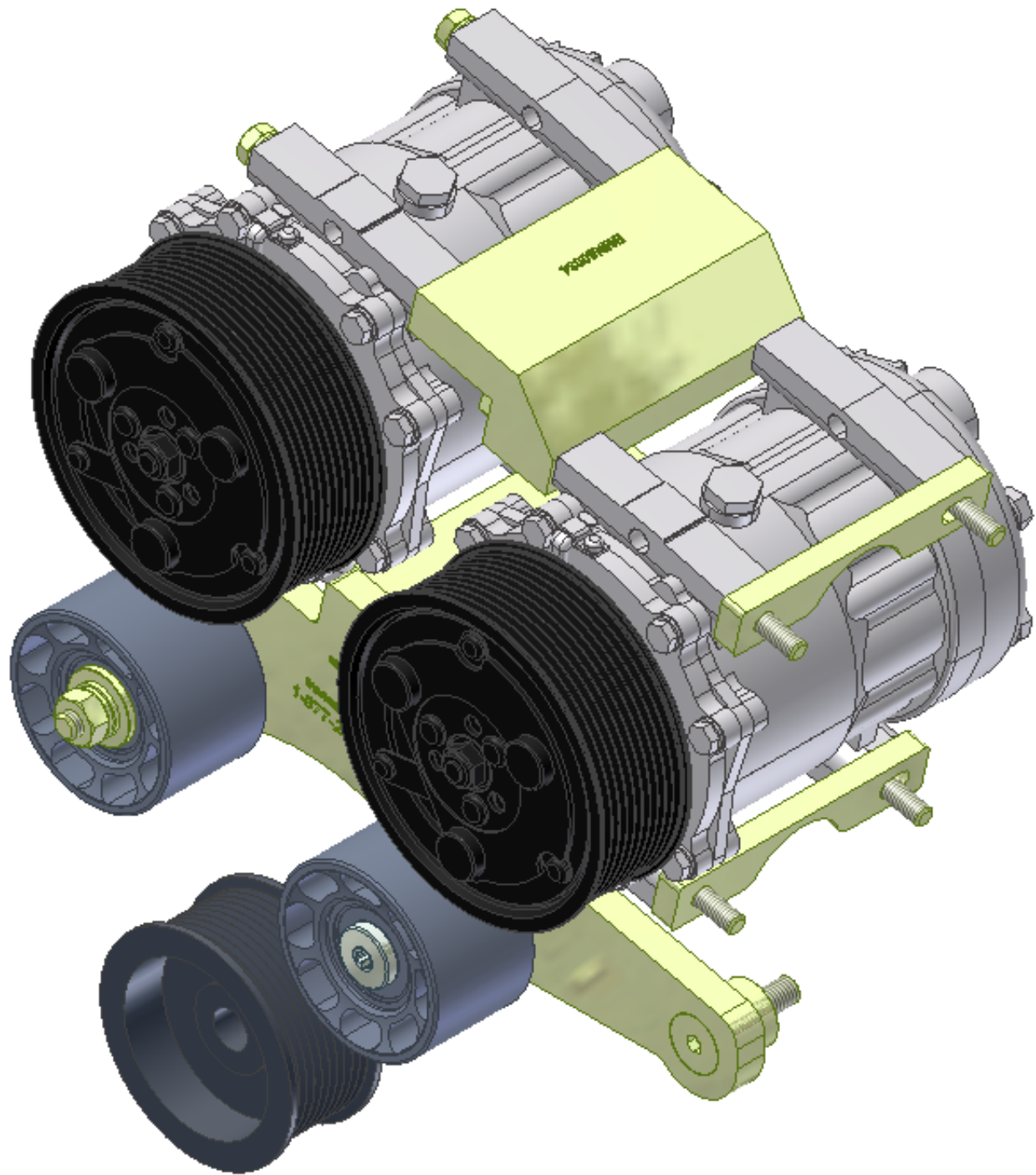
1	WAS SPC18010-NOW SCD20010	8/8/2009	JRR
0	RELEASED TO PRODUCTION	3/17/2009	VAL
REV	DESCRIPTION	DATE	BY
1	WAS SPC18010-NOW SCD20010	3/17/2009	James Stewart
2	RELEASED TO PRODUCTION	3/17/2009	VAL
3	WAS SPC18010-NOW SCD20010	3/17/2009	Ron Ingram
4	RELEASED TO PRODUCTION	3/17/2009	DALE

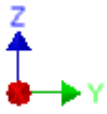
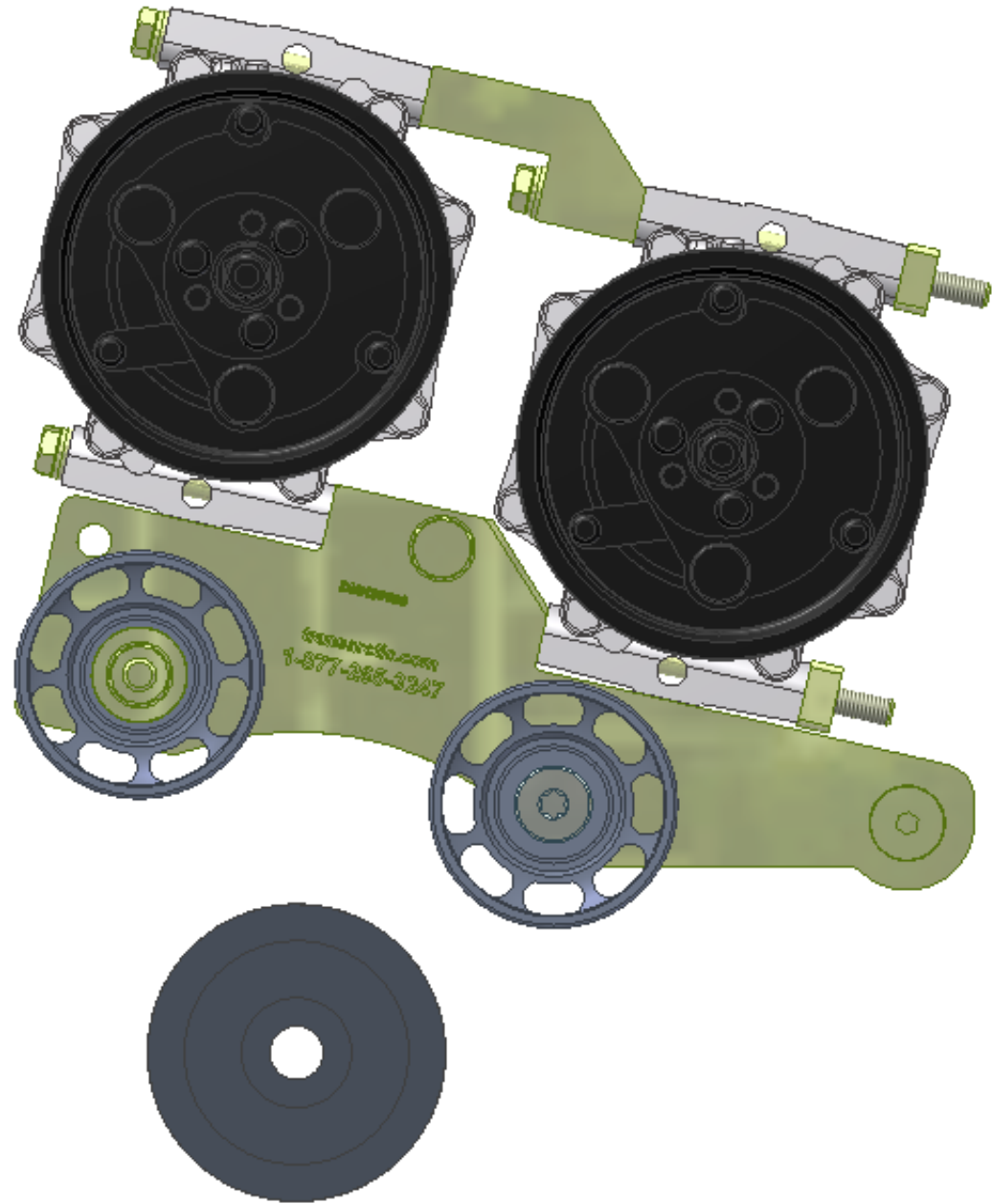
DRAWN		3/17/2009	
CHECKED			
TITLED			
DATE		3/17/2009	
BY		James Stewart	
DESCRIPTION			
DATE		3/17/2009	
BY		Ron Ingram	
APPROVED			
DATE		3/17/2009	
BY		Dale Mason	
DWG NO		KMN82020	REV 1
SCALE		1:2	SHEET 1 OF 1

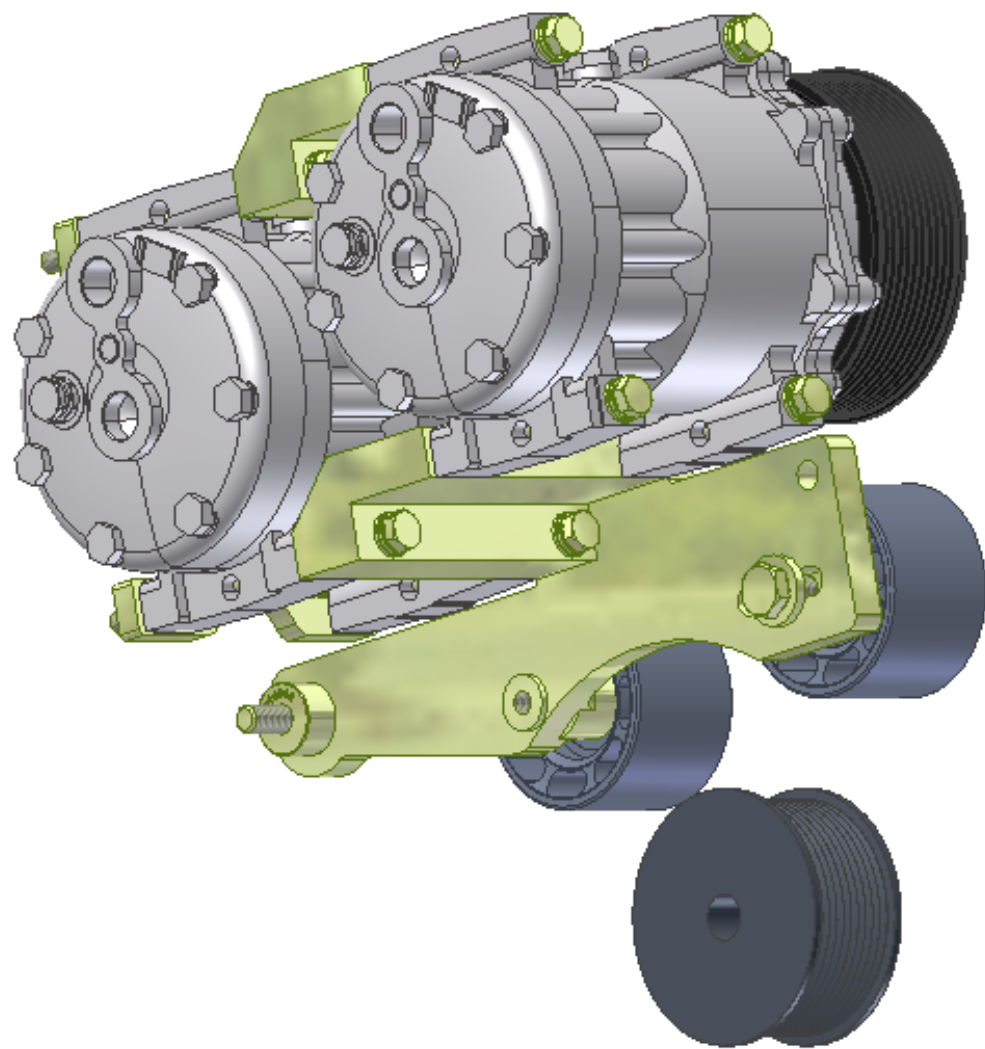
UNSPECIFIED TOLERANCES: (ALL DIM) UNLESS OTHERWISE SPECIFIED
 ONE DECIMAL PLACE (10) AS SHOWN
 FRACTIONAL (1/32) AS SHOWN
 ANGLES (1/16) AS SHOWN

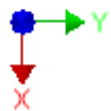
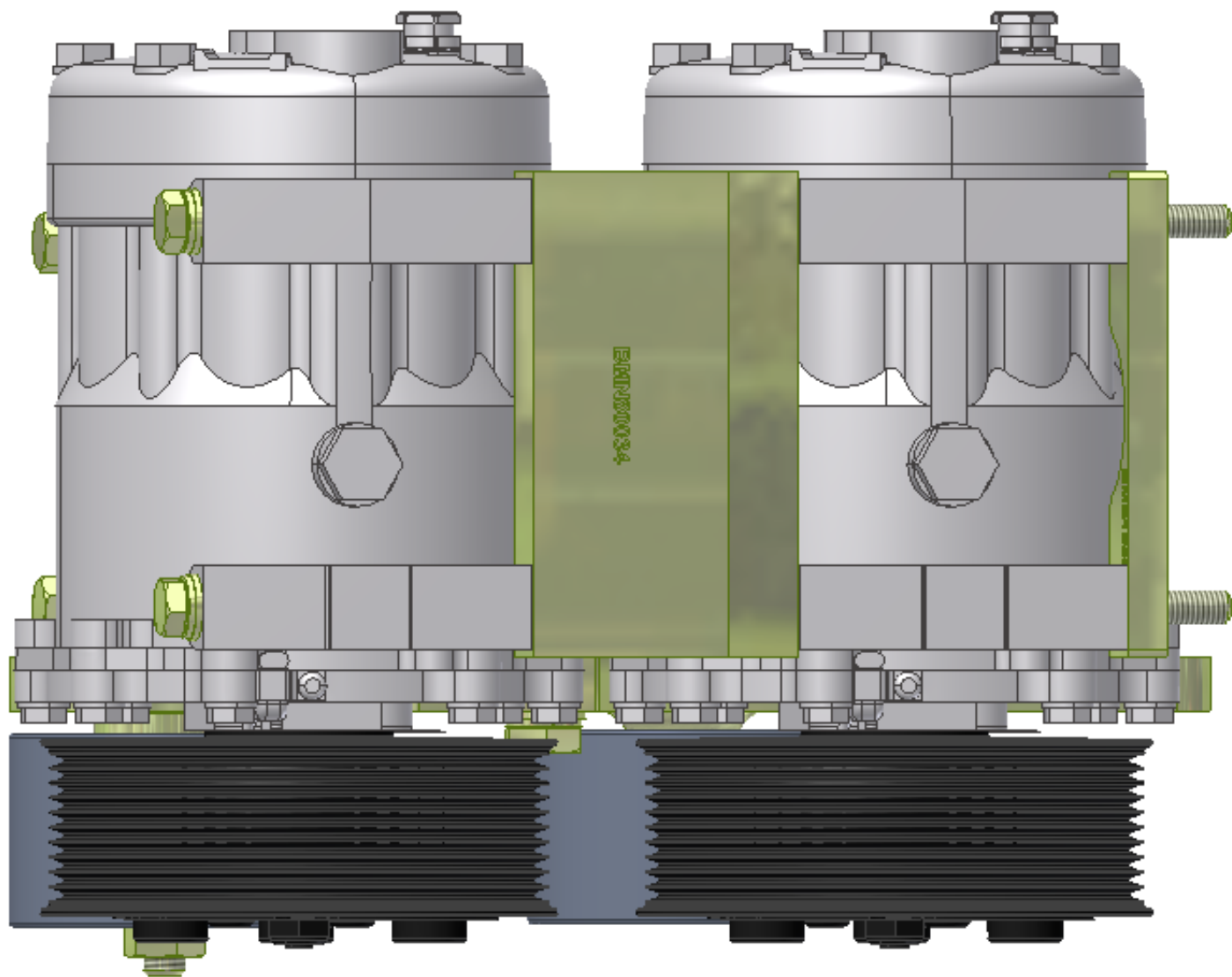


DRAWING UNIT OF MEASURE: MM (INCH)









TransArctic A/C Compressor Mount Installation Disclaimer

All compressor mounts should be installed by qualified and trained personnel using proper tools and equipment in safe working conditions following industry standard guidelines for motor vehicle service and repair.

The installer of any compressor mount purchased from TransArctic must undertake all responsibility of issues arising from that compressor bracket being installed on any vehicle. As well as insure that a **proper and sufficient ground** is established between the compressors' clutches and the vehicle's engine. Mount functionality, operation and durability can all be compromised by an incompetent installation.

Due to the many different situations, parameters and application criteria, which are beyond the compressor mount manufacturer's control, TransArctic does not warrant design, durability, or operational functionality of any compressor mount improperly installed by another party.

With no implied guarantees it is the mount installer's strict responsibility to determine safety and functionality, of the compressor mount, at the time of installation.

Please contact TransArctic with any issue arising from installation so we may better improve the product. If you have any reservations about the compressor mount integrity contact TransArctic immediately at 1-877-COLD-AIR.