

Bill of Materials Listing

TransArctic Canada Inc.

11/1/2017
Page 1 of 1

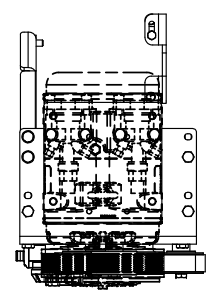
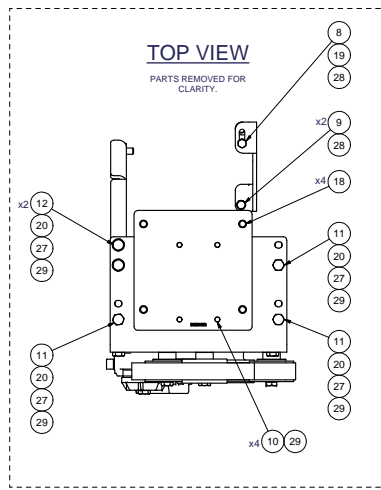
Product Number	Description	Date	Weight	Uof M	Yield
Line Component Prod#	Description	Bin Unit	Qty		
KMK76561	Mt Kit, C7, A3RE, TM-55/65, P8, '06		10/14/2003	79.37	0
10	BEL82261		Belt, 8gr, 2261mm (89")	each	1
20	BMK70008		Bkt, Brace, RR, Support, C7, BBRE, P8	each	1
30	BMK70022		Bkt, Support, Pl, Hose, C7, A3RE, P8	each	1
40	BMK70023		Bkt, Main, Weldmt, C7, A3RE, P8	each	1
50	BMK70024		Bkt, Main, Hat, Assy, C7, A3RE, P8	each	1
60	BMK70026		Bkt, Spacer, Pl, C7, 12" Damper,3/16"Thk	each	1
70	BMZ00072		BKT, Plate, TM-55/65, Interface, .50"	each	1
80	PUL71008		Pulley, Crank, C7, P8, 8" dia, .5"	each	1
90	PUL80076		Pulley, Idler, Backside, P8, 76d (89101)	each	1
100	PUL81074		Pulley, Idler, Frontside, P8,74d (89103)	each	2
110	SLV17010		Sleeve, Pulley, 16.9o x 22.23mm x 10.32i	each	3
130	SPC19010		Spacer, Col, Drl, 19mm x 28.58o x 10.32i	each	3
140	TEN80002		Tenr, HD Spring, BackSide, CCW (89200A)	each	1
150	BAK76561		Bag Kit, Fasteners, KMK76561	each	1

Bill of Materials Listing

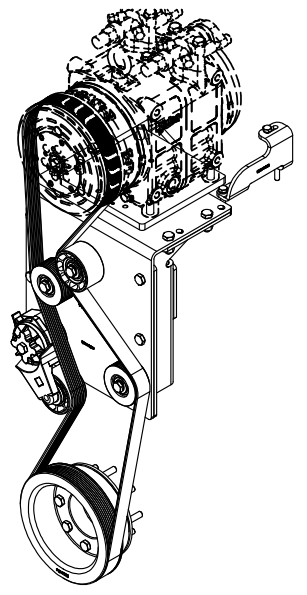
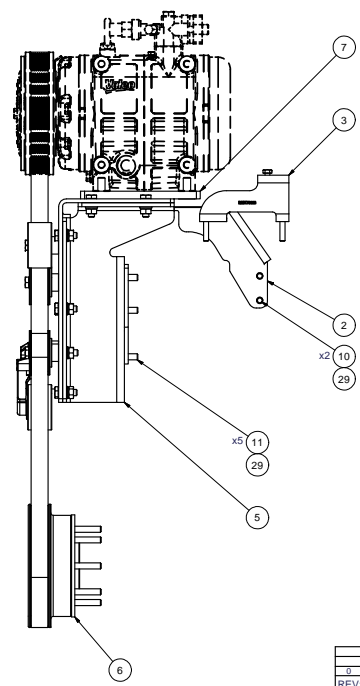
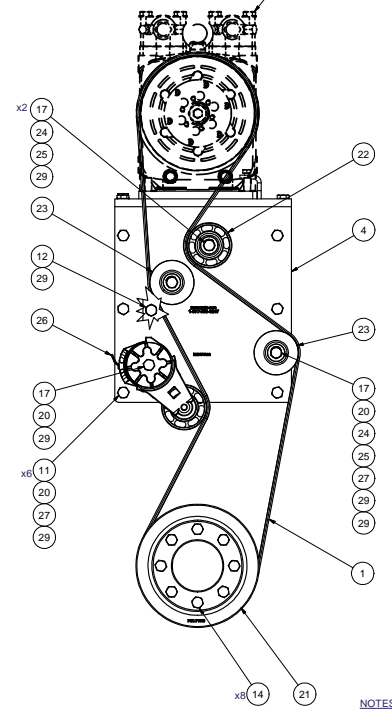
TransArctic Canada Inc.

11/1/2017
Page 1 of 1

Product Number	Description	Date	Weight	Uof M	Yield
Line Component Prod#	Description	Bin Unit	Qty		
BAK76561	Bag Kit, Fasteners, KMK76561		10/30/2017	3.57	0
10	BTC08020	Bolt, Hex, 8 x 1.25 x 20mm, 10.9, Plt	each	1	
20	BTC08040	Bolt, Hex, 8 x 1.25 x 40mm, 10.9, Plt,FT	each	2	
30	BTC10020	Bolt, Hex, 10 x 1.5 x 20mm, 10.9, Plt	each	6	
40	BTC10030	Bolt, Hex, 10 x 1.5 x 30mm, 10.9, Plt	each	14	
50	BTC10035	Bolt, Hex, 10 x 1.5 x 35mm, 10.9, Plt,FT	each	3	
60	BTC10065	Bolt, Hex, 10 x 1.5 x 65mm, 10.9, Plt,FT	each	8	
70	BTC10080	Bolt, Hex, 10 x 1.5 x 80mm, 10.9, Plt,FT	each	4	
80	CSF12036	Capscrew, FH, 12 x 1.75 x 35mm, 10.9,Plt	each	4	
90	NTA08000	Nut, Hex, 8 x 1.25, 8.8, Plt	each	1	
100	NTA10000	Nut, Hex, 10 x 1.5, 8.8, Plt	each	13	
110	WFA10000	Washer, Flat, 10mm, 8.8, Plt	each	12	
120	WLA08000	Washer, Lock, 8mm, 8.8, Plt	each	3	
130	WLA10000	Washer, Lock, 10mm, 8.8, Plt	each	28	



NOTE:
SHOWING TRANSARC TIC
COMPRESSOR PARTS:
CMV33644 (TM-55)/
CMV38844 (TM-65)
AS REFERENCE.



ISOMETRIC VIEW

ITEM	QTY	U/M	PART NUMBER	DESCRIPTION
29	28	EACH	WLA10000	WASHER, LOCK, 10mm, 8.8, PLT
28	3	EACH	WLA08000	WASHER, LOCK, 8mm, 8.8, PLT
27	12	EACH	WFA10000	WASHER, FLAT, 10mm, 8.8, PLT
26	1	EACH	TEN80002	TENR, HD SPRING, BACKSIDE, CCW
25	3	EACH	SPC19010	SPACER, COL, DRL, 19.05mm x25.40 x10.571
24	3	EACH	SLV17010	SLEEVE, PULLEY, 16.90 x 22.23mm x 10.321
23	2	EACH	PUL81074	PULLEY, IDLER, FRONTSIDE, P8, 74d x 39w
22	1	EACH	PUL80076	PULLEY, IDLER, BACKSIDE, P8, 76d, 39w
21	1	EACH	PUL71008	PULLEY, CRANK, C7, P8, 8" DIA, 5"
20	13	EACH	NTA10000	NUT, HEX, 10 x 1.5, 8.8, PLT
19	1	EACH	NTA08000	NUT, HEX, 8 x 1.25, 8.8, PLT
18	4	EACH	CSF12036	CAPSCREW, FH, 12 x 1.75 x 35mm, 10.9, PLT
17	4	EACH	BTC10080	BOLT, HEX, 10 x 1.5 x 80mm, 10.9, PLT
14	8	EACH	BTC10065	BOLT, HEX, 10 x 1.5 x 65mm, 10.9, PLT
12	3	EACH	BTC10035	BOLT, HEX, 10 x 1.5 x 35mm, 10.9, PLT
11	14	EACH	BTC10030	BOLT, HEX, 10 x 1.5 x 30mm, 10.9, PLT
10	6	EACH	BTC10020	BOLT, HEX, 10 x 1.5 x 20mm, 10.9, PLT
9	2	EACH	BTC08040	BOLT, HEX, 8 x 1.25 x 40mm, 10.9, PLT
8	1	EACH	BTC08020	BOLT, HEX, 8 x 1.25 x 20mm, 10.9, PLT
7	1	EACH	BMZ0072	BKT, PLATE, TM-55/65, INTERFACE, .50"
6	1	EACH	BMK70026	BKT, SPACER, PL, C7, 12" DAMPER 3/16"-THK
5	1	EACH	BMK70024	BKT, MAIN, HAT, ASSY, C7, BBRE, P8
4	1	EACH	BMK70023	BKT, MAIN, WELDMT, C7, BBRE, P8
3	1	EACH	BMK70022	BKT, SUPPORT, PL, HOSE, C7, BBRE, P8
2	1	EACH	BMK70008	BKT, BRACE, RR, SUPPORT, C7, BBRE, P8
1	1	EACH	BEL2261	BELT, 8 GR, 2261mm (89")

TRANSARC TIC INC.

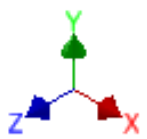
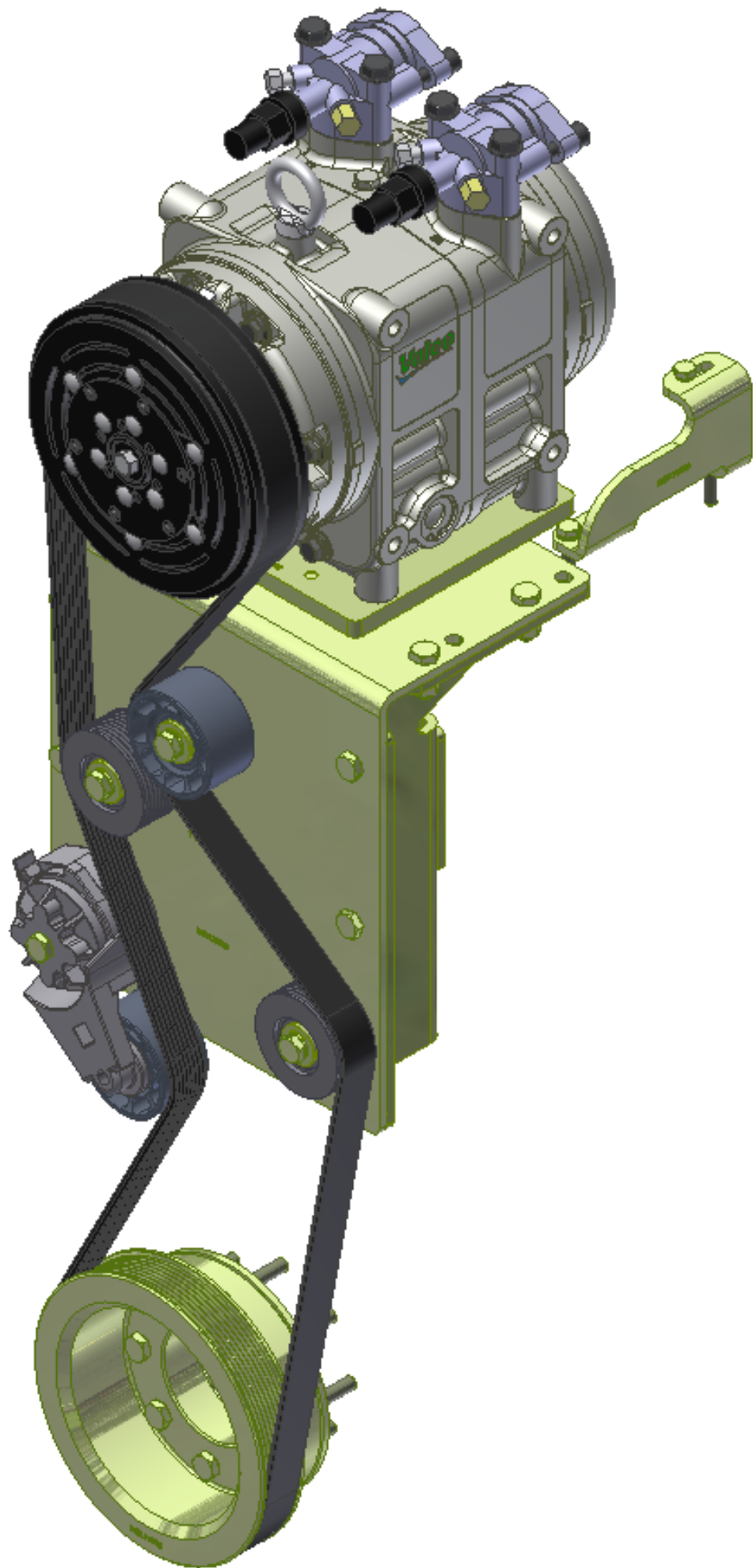
MT KIT, C7, A3RE, TM-55/65, P8, '06

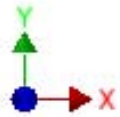
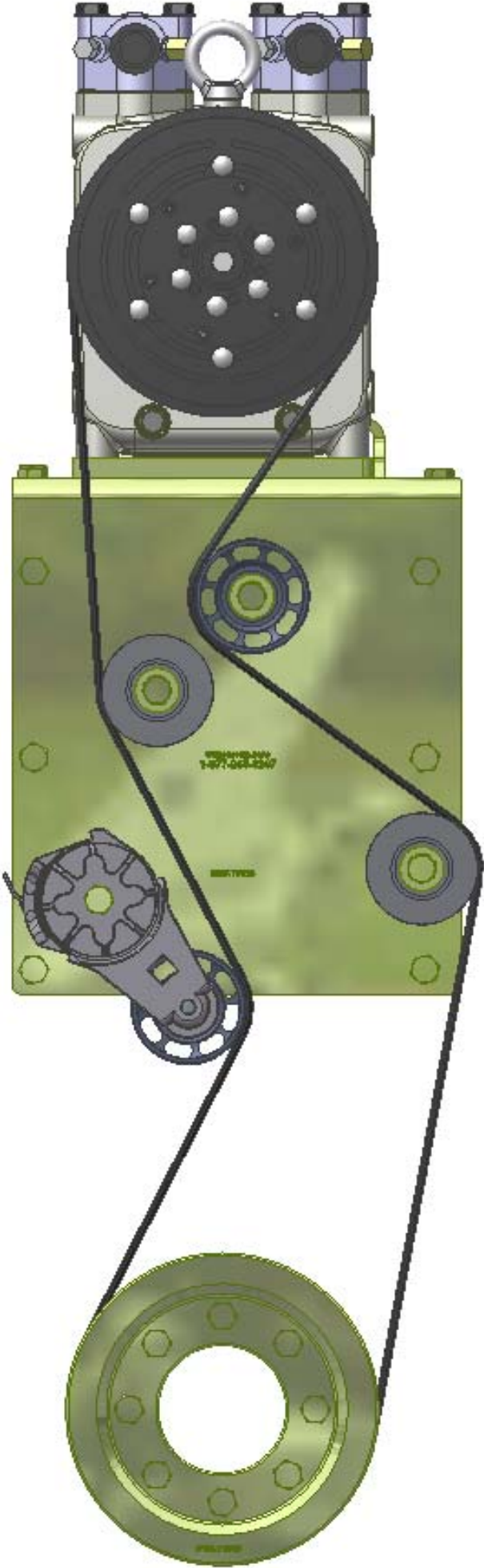
SIZE: D DWG NO: KMK76561 REV: 0

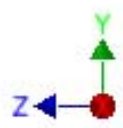
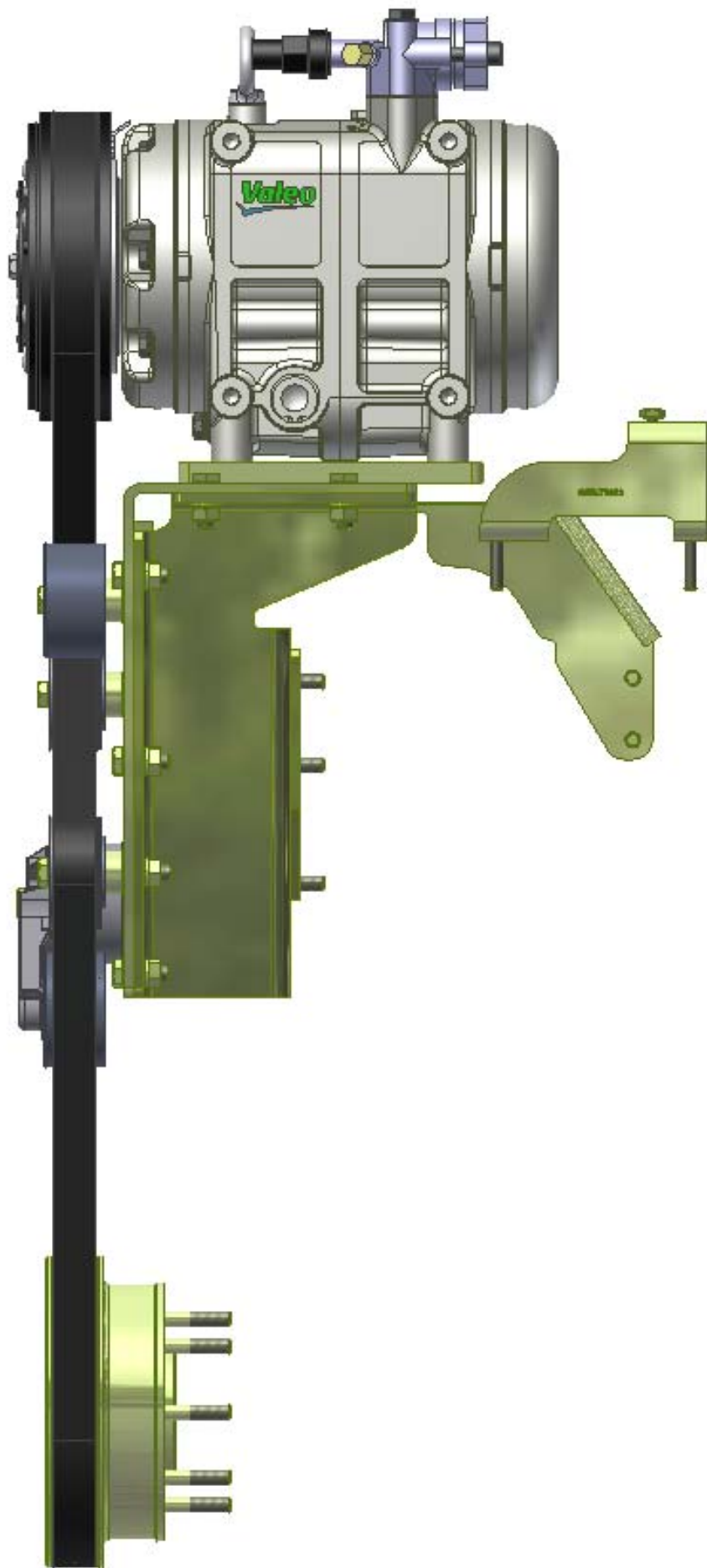
SCALE: 1:1 SHEET 1 OF 1

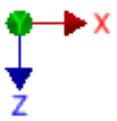
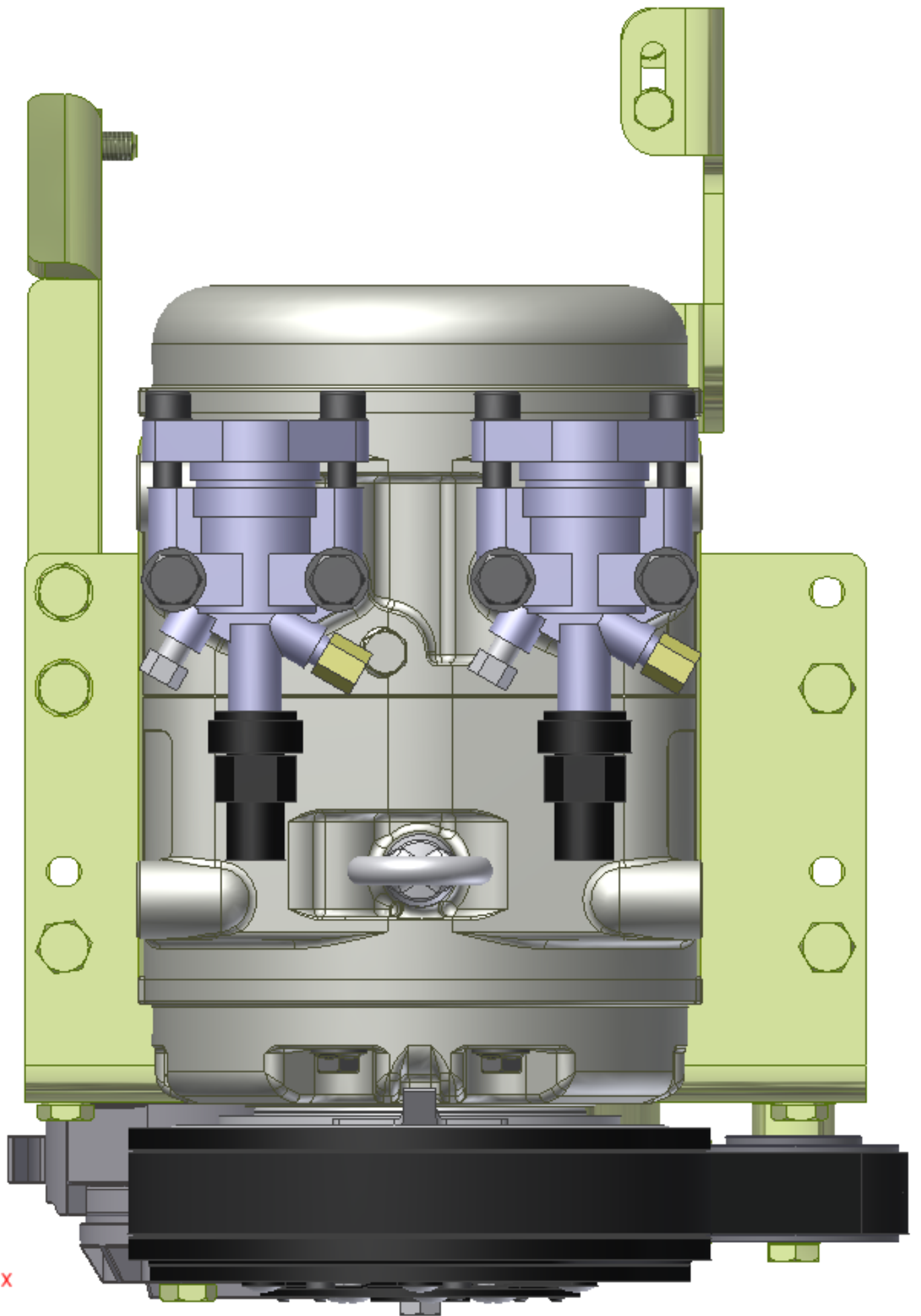
UNSPECIFIED TOLERANCES:	ALL DIMS	THIRD ANGLE PROJECTION
ONE DECIMAL PLACE (.X)	±.05	THIRD ANGLE PROJECTION
TWO DECIMAL PLACES (.XX)	±.02	
THREE DECIMAL PLACES (.XXX)	±.010	
FRACTIONAL (1/16")	±.005	

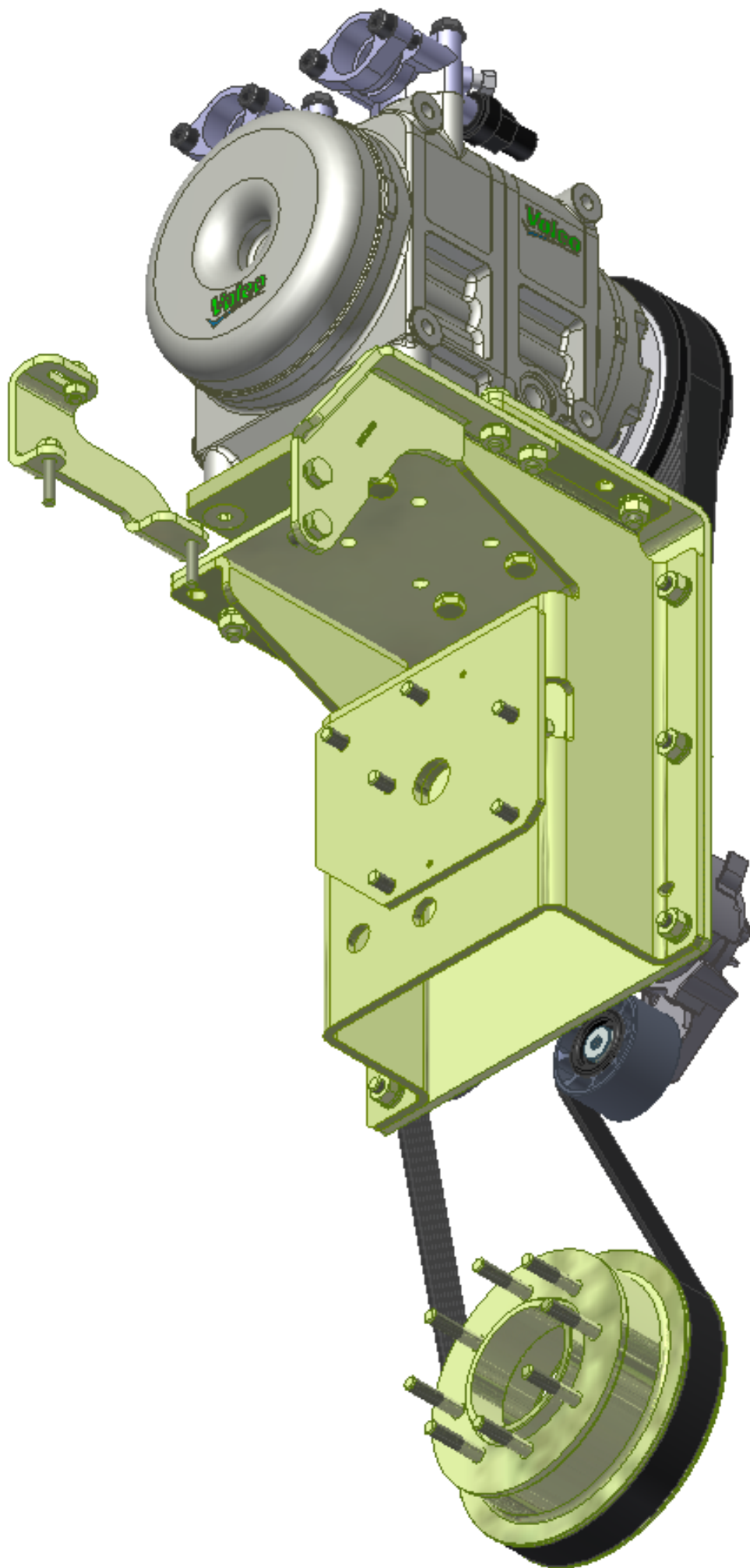
NOTES:
1) USE SERVICABLE THREADLOCKER ON ALL FASTENERS TO ENGINE COMPONENTS AND TORQUE ALL BOLTS TO S.A.E. SPECIFICATIONS.
2) SEE "TRANSARC TIC COMPRESSOR MOUNT INSTALLATION DISCLAIMER".











TransArctic A/C Compressor Mount Installation Disclaimer

All compressor mounts should be installed by qualified and trained personnel using proper tools and equipment in safe working conditions following industry standard guidelines for motor vehicle service and repair.

The installer of any compressor mount purchased from TransArctic must undertake all responsibility of issues arising from that compressor bracket being installed on any vehicle. As well as insure that a **proper and sufficient ground** is established between the compressors' clutches and the vehicle's engine. Mount functionality, operation and durability can all be compromised by an incompetent installation.

Due to the many different situations, parameters and application criteria, which are beyond the compressor mount manufacturer's control, TransArctic does not warrant design, durability, or operational functionality of any compressor mount improperly installed by another party.

With no implied guarantees it is the mount installer's strict responsibility to determine safety and functionality, of the compressor mount, at the time of installation.

Please contact TransArctic with any issue arising from installation so we may better improve the product. If you have any reservations about the compressor mount integrity contact TransArctic immediately at 1-877-COLD-AIR.

Mark OEM tensioner location

Install Kit

Check for Interferences

Check to ensure that the proper OEM tensioner orientation is maintained

Run engine with A/C system engaged for at least 10 minutes to run in belt

Check OEM tensioner orientation and adjust as required

Responsabilidad limitada de TransArctic en la instalación del soporte del compresor

Todos los soportes de los compresores deben ser instalados por personas calificadas y entrenadas, usando para ello los equipos y herramientas necesarios para esta labor en buenas condiciones y según las normas y guías para el servicio y/o reparación de motores de vehículos.

El instalador de los soportes comprados en TransArctic asume toda la responsabilidad de cualquier problema que surga en el soporte del compresor al vehículo; de igual manera es responsable que el cable a tierra sea conectado entre el embrague del compresor y el motor del vehículo.

Se advierte que el buen funcionamiento y la durabilidad del soporte pueden ser comprometidos por defectos en su instalación.

Debido a las diversas situaciones que se puedan presentar fuera del control del fabricante, TransArctic no garantiza el diseño, la durabilidad o el correcto funcionamiento de cualquier equipo inapropiadamente instalado por terceros.

Esta sobreentendido que el Instalador del montaje del compresor es estrictamente responsable de la seguridad y funcionamiento del equipo en el momento de la instalación.

Si tuviera algún problema o duda acerca de la instalación del soporte del compresor pongase en contacto inmediatamente con TransArctic al teléfono 1-877-COLD-AIR de modo que podamos mejorar nuestro producto.

Note la ubicación del medidor de tensión OEM

Instale el equipo

Controlar si hay interferencias.

Asegure que el medidor de tensión mantenga la orientación justa.

Encienda el motor por lo menos 10 minutos con el sistema A/C enganchado para que la correa corra

Controle la orientación justa del medidor de tensión y ajuste a las condiciones requeridas del fabricante