

Bill of Materials Listing

TransArctic Canada Inc.

11/30/2021
Page 1 of 1

Product Number	Date	Description		Uof M	Weight	Yield	
Line	Qty	Component Prod#	Rev#	Description	Bin	Unit	
KSP10030		1/17/2019	2	Kit, Platform, T3RE, TM-65, '19		413.06	0
5	1	PAC23150		Pack, Carton, 23" x 15" x 10", 51 ECT		each	
10	1	BEL32134		Belt, Banded B gr, 2134mm (84")		each	
20	1	KBB00001		5 Kit, Platform, Transit, ADM, '12		each	
30	1	KCF65010		0 Kit, Comp, TM-55/65, Conversion, '19		each	
40	1	KIZ00001		1 Kit, Inst, Relocate PDU, Transit Mts		each	
50	1	KTT00006		0 Kit, Tensioner Bracket, Ass'y, BB, '22		each	

Bill of Materials Listing

TransArctic Canada Inc.

11/30/2021
Page 1 of 1

Product Number	Date	Description		Uof M	Weight	Yield		
Line	Qty	Component	Prod#	Rev#	Description	Bin	Unit	
KBB00001	6/20/2012	5 Kit, Platform, Transit, ADM, '12					249.33	0
10	1	BMZ01034			2 Bkt, Spring, Support Arm, ADM, '12		each	
20	1	BMZ01035			4 Bkt, Main, Pivot, Ass'y, ADM Transit,'12		each	
30	1	BMZ01037			2 Bkt, Fork, Knuckle-Joint, Adm, '12		each	
40	1	BMZ01038			3 Bkt, Main, Base Pl, ADM, '12		each	
50	1	BMZ01040			0 Bkt, Ass'y, THRD Rod, Isolator, ADM, '12		each	
60	2	BMZ01041			2 Shaft Key, 5/16" SQ x .540" Long		each	
70	2	BMZ01042			1 Vibration Isolator, Bar, 9.63 x 2 x 1.50		each	
80	1	BMZ01044			3 Bkt, Cradle, Pivot, Adm Transit, '12		each	
90	2	BMZ01047			0 Bkt, Bar, Slide Nut, ADJ, Trans ADM, '12		each	
110	1	PIS01010			2 Shaft, Stl, Grease, ADM Transit, '12		each	
120	1	SPR00002			0 Spring, Comp, R/H, 110 x 50 x 8.4, Red		each	
130	1	WFS16001			0 Washer, Flat, Dbl Step, 17mm, 50mm, Plt		each	
140	1	WFS27001			0 Washer, Flat, Dbl Step, 27mm, 63.5, Plt		each	
150	1	KBB00025			5 Bag Kit, Fasteners, KBB00001/2		each	
160	1	KBB00026			4 Bag Kit, Fasteners, Assembly, KBB00001/2		each	

NOTE:

Use Blue "Loctite" on the (4) fasteners to fasten BMZ01034 in place.
 1/2 -13 UNC grd. 8 bolts, c/w L'whrs torque... used on the PIS01010 Shaft
 = 45 FT*LBS. (VTS@ JAN-25-2019)

Bill of Materials Listing

TransArctic Canada Inc.

11/30/2021
Page 1 of 1

Product Number	Date	Description			Uof M	Weight	Yield		
Line	Qty	Component	Prod#	Rev#	Description	Bin	Unit		
KBB00025	8/1/2012	5			Bag Kit, Fasteners, KBB00001/2			1.61	0
10	6	BTQ08126			Bolt, Hex, 1/2-20unf, 1.25", 8, Plt		each		
20	1	BTQ08150			Bolt, Hex, 1/2-13unc, 1.5", 8, Plt		each		
30	1	BTQ10351			Bolt, Hex, 5/8-18unf, 3.5", 8, PLT		each		
50	1	NTQ08000			Nut, Hex, 1/2-13unc, 8, Plt		each		
60	2	NTQ10000			Nut, Hex, 5/8-11unc, 8, Plt		each		
65	1	NTQ10001			Nut, Hex, 5/8-18unf, 8, Plt		each		
100	8	WFQ08000			Washer, Flat, 1/2", 8, Plt		each		
110	2	WFQ10000			Washer, Flat, 5/8", 8, Plt		each		
120	7	WLQ08000			Washer, Lock, 1/2", 8, Plt		each		
130	2	WLQ10000			Washer, Lock, 5/8", 8, Plt		each		

Bill of Materials Listing

TransArctic Canada Inc.

11/30/2021
Page 1 of 1

Product Number	Date	Description	Uof M	Weight	Yield	
Line	Qty	Component Prod#	Rev#	Bin	Unit	
KBB00026	8/1/2012	4 Bag Kit, Fasteners, Assembly, KBB00001/2			4.85	0
5	6	BTQ08101			each	
15	1	BTQ08100			each	
20	8	BTQ08150			each	
70	2	WFS08001			each	
100	6	WFQ08000			each	
120	16	WLQ08000			each	
130	4	NTQ08000			each	
140	1	BTM08100	0		each	

Bill of Materials Listing

TransArctic Canada Inc.

11/30/2021

Page 1 of 1

Product Number	Date			Description	Uof M	Weight	Yield	
Line	Qty	Component	Prod#	Rev# Description	Bin	Unit		
KCF65010				0 Kit, Comp, TM-55/65, Conversion, '19			31.10	0
10	1	BMZ00174		0 Bkt, Adapter, D/S, 4xFC To TM-55/65		each		
30	1	KBF65010		0 Bag Kit, Fasteners, KCF65010		each		

Bill of Materials Listing

TransArctic Canada Inc.

11/30/2021
Page 1 of 1

Product Number	Date	Description		Uof M	Weight	Yield			
Line	Qty	Component	Prod#	Rev#	Description	Bin	Unit	Weight	Yield
KBF65010		9/21/2012	0		Bag Kit, Fasteners, KCF65010			1.04	0
10	3	BTQ08200			Bolt, Hex, 1/2-13unc, 2.0", 8, Plt		each		
20	1	CSF08150			Capscrew, FH, 1/2-13 x 1.50", Alloy, Plt		each		
30	4	CSF12036			Capscrew, FH, 12 x 1.75 x 35mm, 10.9,Plt		each		
40	4	NTQ08000			Nut, Hex, 1/2-13unc, 8, Plt		each		
50	7	WFQ08000			Washer, Flat, 1/2", 8, Plt		each		
60	4	WLQ08000			Washer, Lock, 1/2", 8, Plt		each		

Bill of Materials Listing

TransArctic Canada Inc.

11/30/2021

Page 1 of 1

Product Number	Date	Description		Uof M	Weight	Yield
Line	Qty	Component Prod#	Rev# Description	Bin Unit		
KIZ00001	6/11/2014	1	Kit, Inst, Relocate PDU, Transit Mts		20.21	0
10	1	BMC67093	1 Bkt, Fuse Panel, Vert., ISB, T3RE		each	
20	1	BMC67094	1 Bkt, Diag, Brace DS, Fuse Panel, T3RE		each	
30	1	BMC67095	0 Bkt, Diag, Brace PS, Fuse Panel, T3RE		each	
40	1	KBZ00001	1 Bag Kit, Fasteners, KIZ00001		each	

Bill of Materials Listing

TransArctic Canada Inc.

11/30/2021

Page 1 of 1

Product Number	Date	Description	Uof M	Weight	Yield	
Line	Qty	Component Prod#	Rev#	Bin	Unit	
KBZ00001	11/7/2014	1 Bag Kit, Fasteners, KIZ00001				0.55
10	2	BTQ06100			each	
20	5	BTQ06125			each	
30	2	NTQ06000			each	
40	9	WFN06000			each	
50	7	WLQ06000			each	

Bill of Materials Listing

TransArctic Canada Inc.

11/29/2021
Page 1 of 1

Product Number	Date	Description		Uof M	Weight	Yield	
Line	Qty	Component Prod#	Rev#	Description	Bin	Unit	
KTT00006		10/24/2012	0	Kit, Tensioner Bracket, Ass'y, BB, '22		77.87	0
10	1	BMZ01083	0	Bkt, FRT, Weldmt, Angle, BB, T3RE, '22		each	
15	1	BMZ01086	0	Bkt, Diag, Brace, BB, T3RE, '22		each	
20	1	PUA05012	0	Pulley, Assy, Idler, B/BX gr, 5", STL, Plt		each	
30	1	PUL80074		Pulley, Idler, B/S, Wide, 74d (89102)		each	
40	1	SCD21912	0	Spacer, Col, Drl, 21.9mm x 25.4o x 12.3i		each	
50	1	SCD25412	0	Spacer, Col, Drl, 25.4mm x 25.4o x 12.3i		each	
60	2	SLV17012	0	Sleeve, Pulley, 16.9o x 22.23mm x 12.32i		each	
70	1	KBT00006	0	Bag Kit, Fasteners, KTT00006		each	

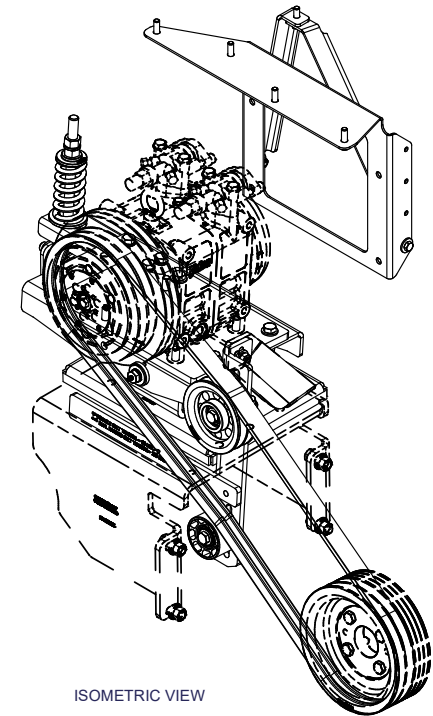
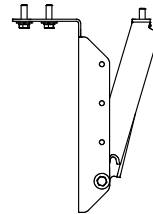
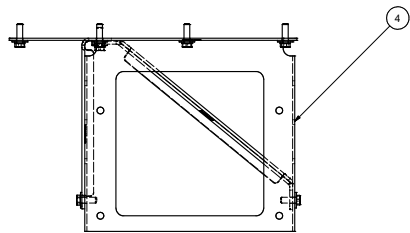
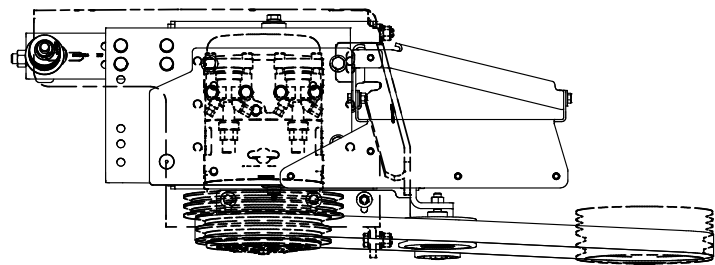
Bill of Materials Listing

TransArctic Canada Inc.

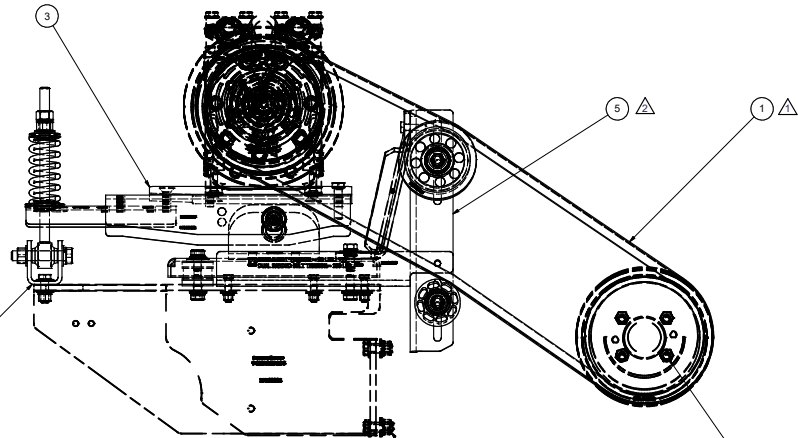
12/1/2021
Page 1 of 1

Product Number	Date	Description	Uof M	Weight	Yield	
Line	Qty	Component Prod#	Rev#	Description	Bin	Unit
KBT00006	10/24/2012	0		Bag Kit, Fasteners, KTT00006		
						1.00
						0
5	1	BTC10035		Bolt, Hex, 10 x 1.5 x 35mm, 10.9, Plt,FT		each
10	2	BTC12080		Bolt, Hex, 12 x 1.75 x 80mm, 10.9,Plt,FT		each
15	3	BTQ06150		Bolt, Hex, 3/8-16unc, 1.50", 8, Plt		each
20	1	BTQ08126		Bolt, Hex, 1/2-20unf, 1.25", 8, Plt		each
27	1	NTA10000		Nut, Hex, 10 x 1.5, 8.8, Plt		each
30	2	NTA12000		Nut, Hex, 12 x 1.75, 8.8, Plt		each
40	3	NTP06000		Nut, Hex, 3/8-16unc, 5, Plt		each
42	1	WFA10002		Washer, Flat, 10mm, Hvy, 8.8, Plt		each
44	2	WFA12000		Washer, Flat, 12mm, 8.8, Plt		each
50	3	WFN06000		Washer, Flat, 3/8", 2, Plt		each
53	3	WFS06004		Washer, Flat, 3/8", Gr. 9, USS, Plt		each
55	1	WFS08001		Washer, Flat, 1/2", 8, USS, Plt		each
58	1	WLA10000		Washer, Lock, 10mm, 8.8, Plt		each
60	2	WLA12000		Washer, Lock, 12mm, 8.8, Plt		each
70	3	WLP06000		Washer, Lock, 3/8", 5, Plt		each
80	1	WLQ06000		Washer, Lock, 3/8", 8, Plt		each
90	1	WLQ08000		Washer, Lock, 1/2", 8, Plt		each

8 7 6 5 4 3 2 1

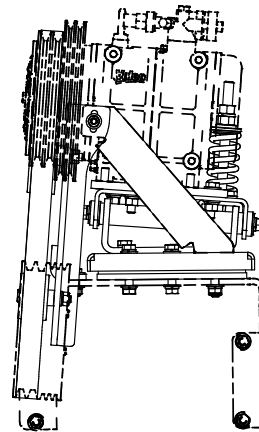


ISOMETRIC VIEW



4x CRANK PULLEY FASTENERS SUPPLIED BY OTHERS.

4x FOUNDATION MAIN BRACKET FASTENERS SUPPLIED BY OTHERS.

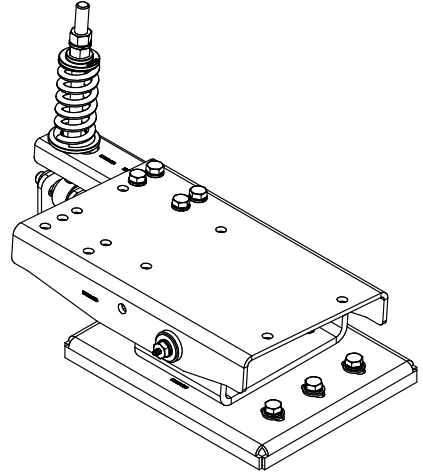
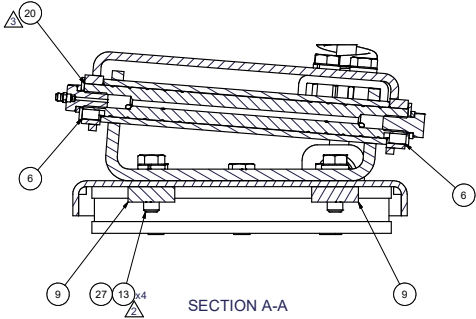
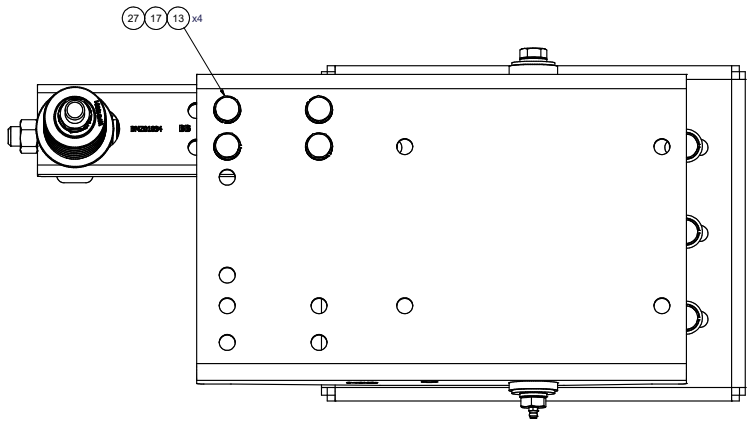


ITEM	QTY	U/M	PART NUMBER	DESCRIPTION
5	1	EACH	KT100006	KIT, TENSIONER BRACKET, ASS'Y, '22
4	1	EACH	KI200001	KIT, INST, RELOCATE PDU, TRANSIT MTS.
3	1	EACH	KCF65010	KIT, COMP, TM-55/65, CONVERSION, '19
2	1	EACH	KBB00001	MT KIT, PLATFORM, TRANSIT, ADM, '12
1	1	EACH	BEL32134	BELT, BANDED B GR, 2134mm (84")

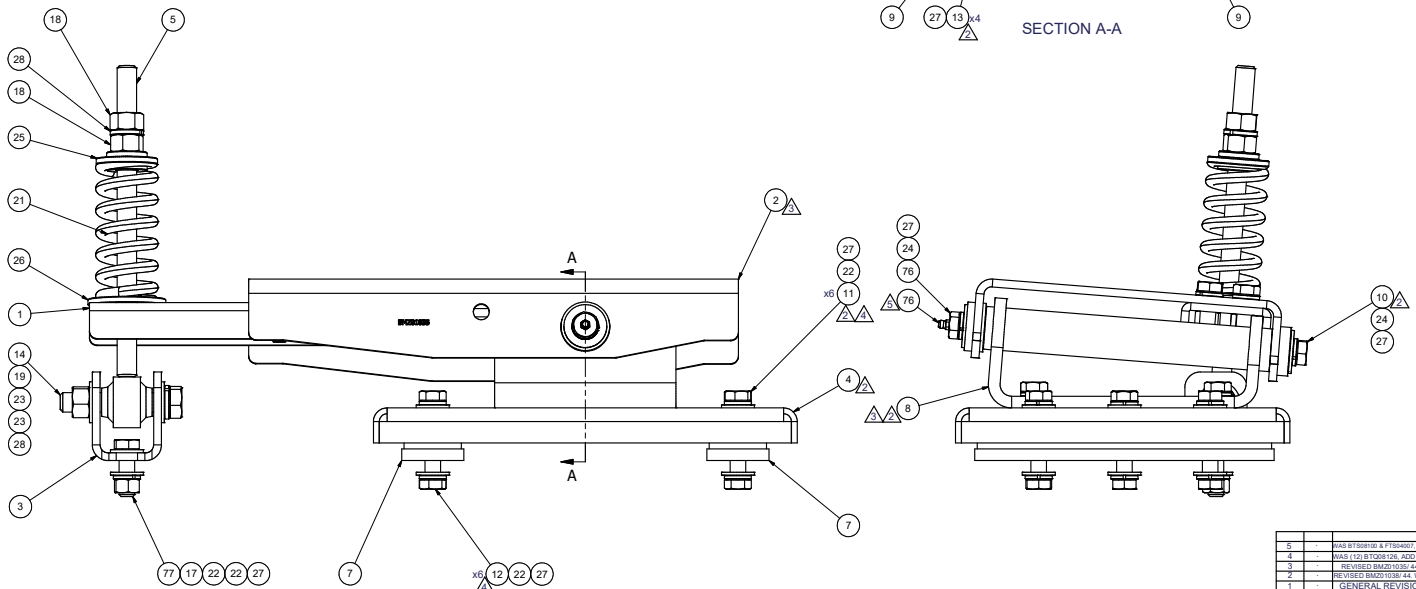
DRAWN		CHECKED		TITLE	
rodriquez	1/17/2019	Val Jakowlew	1/17/2019	KIT, PLATFORM, T3RE, T3RE, '19	
DATE: BY:		DATE: BY:		DATE: BY:	
1/17/2018 James Stewart		1/17/2018 James Stewart		1/17/2019 Dale Mason	
APPROVED		APPROVED		APPROVED	
UNSPECIFIED TOLERANCES:		UNSPECIFIED TOLERANCES:		UNSPECIFIED TOLERANCES:	
ALL DIMS		ALL DIMS		ALL DIMS	
ONE DECIMAL PLACE (X1)		ONE DECIMAL PLACE (X1)		ONE DECIMAL PLACE (X1)	
TWO DECIMAL PLACE (X2)		TWO DECIMAL PLACE (X2)		TWO DECIMAL PLACE (X2)	
THREE DECIMAL PLACE (X3)		THREE DECIMAL PLACE (X3)		THREE DECIMAL PLACE (X3)	
FOUR DECIMAL PLACE (X4)		FOUR DECIMAL PLACE (X4)		FOUR DECIMAL PLACE (X4)	
FRACTIONAL (X1/16)		FRACTIONAL (X1/16)		FRACTIONAL (X1/16)	
THIRD ANGLE PROJECTION		THIRD ANGLE PROJECTION		THIRD ANGLE PROJECTION	
DRAWING UNIT OF MEASURE:		DRAWING UNIT OF MEASURE:		DRAWING UNIT OF MEASURE:	
MM (INCH)		MM (INCH)		MM (INCH)	
SCALE:		SCALE:		SCALE:	
1:4		1:4		1:4	
DWG NO		DWG NO		DWG NO	
KSP10030		KSP10030		KSP10030	
REV		REV		REV	
2		2		2	

8 7 6 5 4 3 2 1

8 | 7 | 6 | 5 | 4 | 3 | 2 | 1



ISOMETRIC VIEW
SCALE 1/3



77	1	EACH	100007	BOLT, HEX, 1/2-13UNC x 1.50, 8, PLT
28	2	EACH	WLO10000	WASHER, LOCK, 5/8", 8, PLT
27	23	EACH	WLO08000	WASHER, LOCK, 1/2", 8, PLT
26	1	EACH	WFS27001	WASHER, FLAT, DBL STEP, 28mm, 63.5, PLT
25	1	EACH	WFS16001	WASHER, FLAT, DBL STEP, 16mm, 50mm, PLT
24	2	EACH	WFS08001	WASHER, FLAT, 1/2", 8, USS, PLT
23	2	EACH	WFO10000	WASHER, FLAT, 5/8", 8, PLT
22	14	EACH	WFO08000	WASHER, FLAT, 1/2", 8, PLT
21	1	EACH	SPR00002	SPRING, COMP, R/H, 110 x 50 x 8.4, RED
20	1	EACH	PTS01010	SHAFT, STL, GREASE, ADM TRANSIT, '12
19	1	EACH	NTQ10001	NUT, HEX, 5/8-18UNF, 8, PLT
18	2	EACH	NTQ10000	NUT, HEX, 5/8-11UNC, 8, PLT
17	5	EACH	NTQ08000	NUT, HEX, 1/2-13UNC, 8, PLT
14	1	EACH	BTQ10351	BOLT, HEX, 5/8-18UNF x 3.50, 8, PLT
13	8	EACH	BTQ08150	BOLT, HEX, 1/2-13UNC x 1.50, 8, PLT
12	6	EACH	BTQ08126	BOLT, HEX, 1/2-20UNF x 1.25, 8, PLT
11	6	EACH	BTQ08101	BOLT, HEX, 1/2-20UNF x 1.00, 8, PLT
10	1	EACH	BTQ08100	BOLT, HEX, 1/2-13UNC x 1.00, 8, PLT
76	1	EACH	BTM08100	BOLT, 1/2-13 x 1.0" w/ GREASE NIPPLE FTG
9	2	EACH	BMZ01047	BKT, BAR, SLIDE NUT, ADJ, TRANS ADM, '12
8	1	EACH	BMZ01044	BKT, ASSY, CRADLE PIVOT, ADM TRANSIT, '12
7	2	EACH	BMZ01042	VIBRATION ISOLATOR, BAR, 9.63 x 2 x 1.50
6	2	EACH	BMZ01041	Shaft Key, 5/16" SQ x .540" Long
5	1	EACH	BMZ01040	BKT, ASSY, THRD ROD, ISOLATOR, ADM, '12
4	1	EACH	BMZ01038	BKT, MAIN, BASE PL, ADM, '12
3	1	EACH	BMZ01037	BKT, FORK, KNUCKLE-JOINT, ADM, '12
2	1	EACH	BMZ01035	BKT, MAIN, PIVOT, ASSY, ADM TRANSIT, '12
1	1	EACH	BMZ01034	BKT, SPRING, SUPPORT ARM, ADM, '12

ITEM	QTY	U/M	PART NUMBER	DESCRIPTION
BILL OF MATERIALS				
TRANSARCTIC INC.				
TITLE				
MT KIT, PLATFORM, TRANSIT, ADM, '12				
SIZE				
D				
DWG NO				
KBB00001				
REV				
5				

REV	ECN	DESCRIPTION	DATE	BY
5		ISSUED FOR PRODUCTION	3/15/2018	JRR
4		ISSUED FOR PRODUCTION	11/26/16	AKL
3		REVISED DRAWING	10/11/2012	JRR
2		REVISED DRAWING	01/10/2012	JRR
1		GENERAL REVISION	08/09/12	JRR
0		RELEASED TO PRODUCTION	7/3/2012	JRR

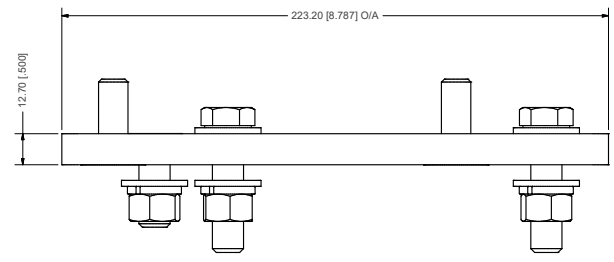
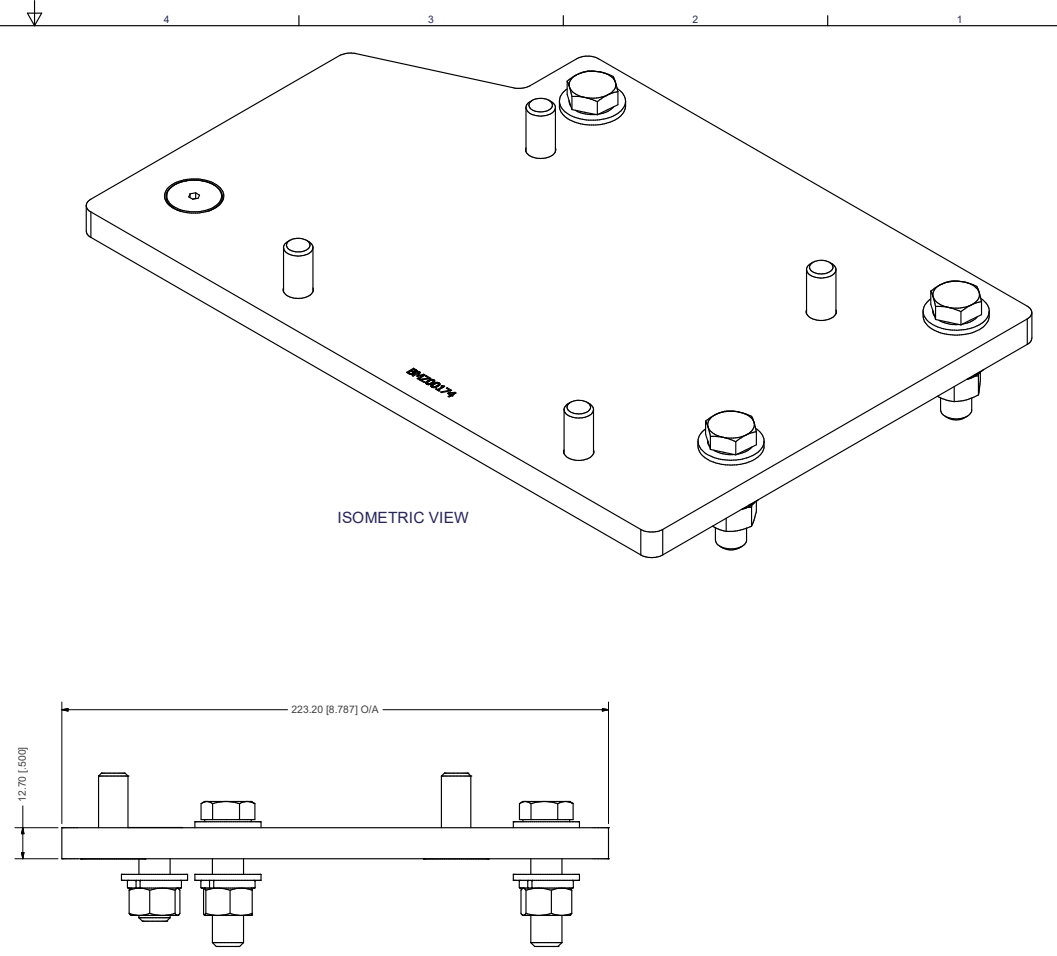
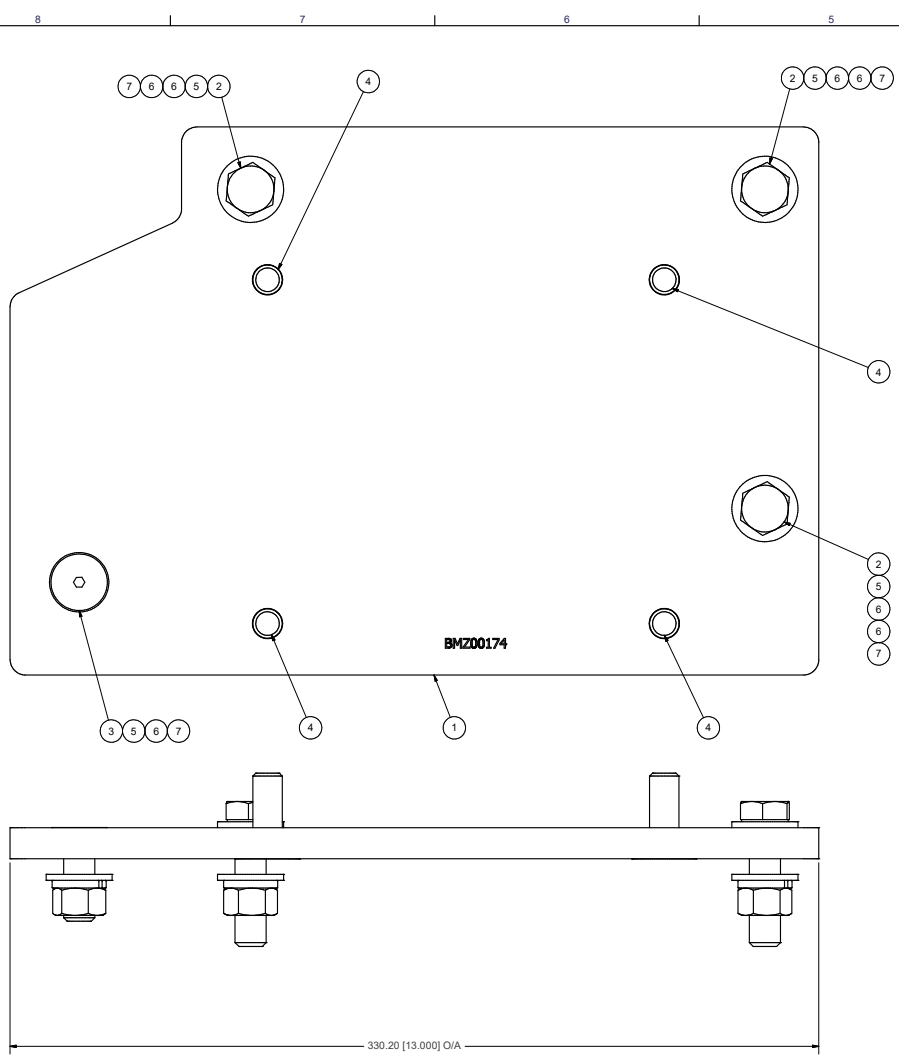
NOTES:
 1) USE SERVICABLE THREADLOCKER ON ALL FASTENERS TO ENGINE COMPONENTS AND TORQUE ALL BOLTS TO S.A.E. SPECIFICATIONS.
 2) SEE "TRANSARCTIC A/C COMPRESSOR MOUNT INSTALLATION DISCLAIMER".

UNSPECIFIED TOLERANCES:	ALL DIMS	FINISH
ONE DECIMAL PLACE (X1)	± .1	2
TWO DECIMAL PLACE (X10)	± .02	10
THREE DECIMAL PLACE (X100)	± .005	100
FRACTIONAL (X16)	± .00625	16



DRAWING UNIT OF MEASURE: MM (INCH) SCALE: 1:2 SHEET 1 OF 1

8 | 7 | 6 | 5 | 4 | 3 | 2 | 1



ITEM	QTY	U/M	PART NUMBER	DESCRIPTION
7	4	EACH	WLQ08000	WASHER, LOCK, 1/2", 8, PLT
6	7	EACH	WFO08000	WASHER, FLAT, 1/2", 8, PLT
5	4	EACH	NTQ08000	NUT, HEX, 1/2-13UNC, 8, PLT
4	4	EACH	CSF12036	CAPSCREW, FH, 12 x 1.75 x 35mm, 10.9, PLT
3	1	EACH	CSF08150	CAPSCREW, FH, 3/8-16 x 1.5", 9, PLT
2	3	EACH	BTQ08200	BOLT, HEX, 1/2-13UNC x 2.00, 8, PLT
1	1	EACH	BMZ00174	BKT, PL, TM-55/65, HDX, INTERFACE, .50"

TRANSARCTIC INC.

KIT, COMP, TM-55/65, CONVERSION, '19

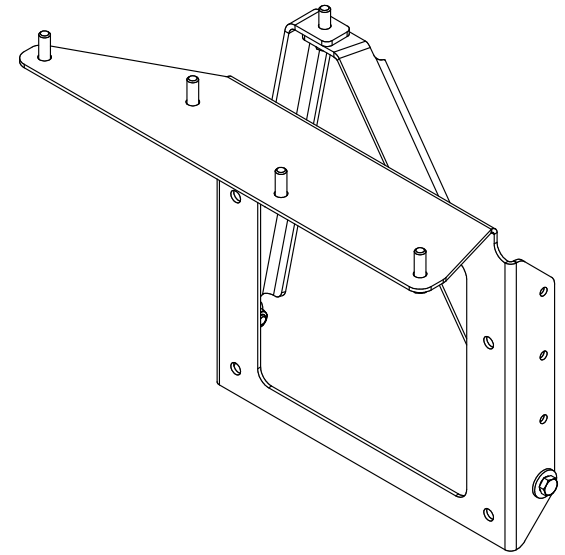
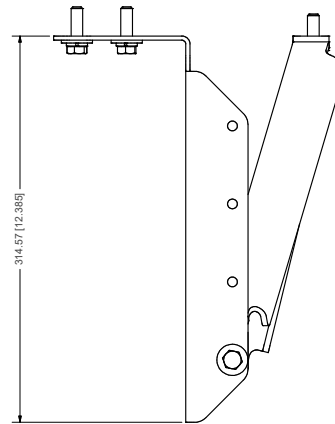
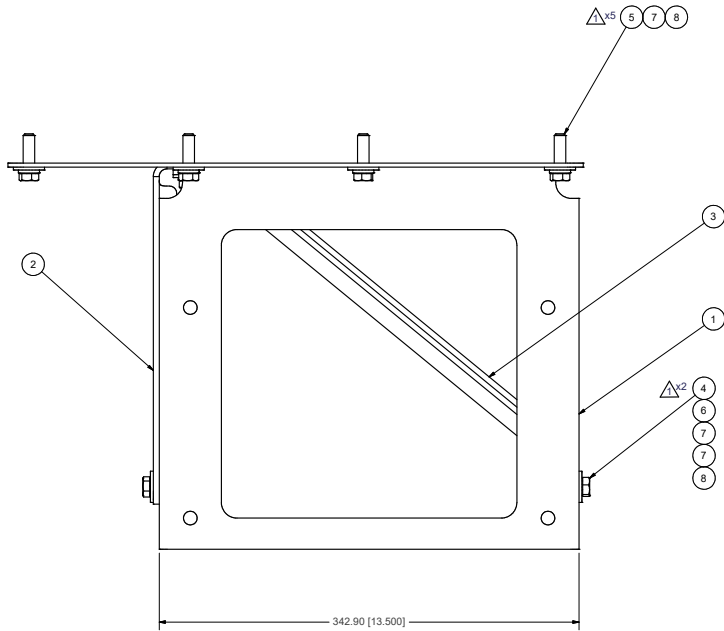
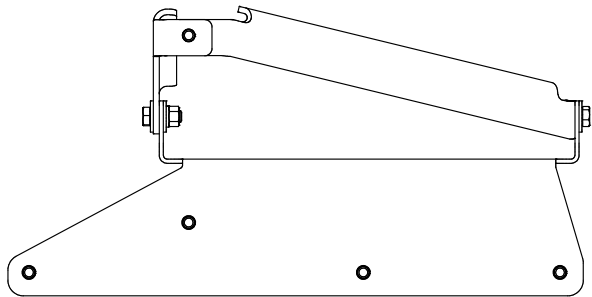
SIZE: D
DWG NO: KCF65010
REV: 0

REV	ECN	DESCRIPTION	DATE	BY
0		RELEASED TO PRODUCTION	1/3/2019	JRR

UNSPECIFIED TOLERANCES: ALL DIMS IN INCHES
 ONE DECIMAL PLACE (X1) .10
 TWO DECIMAL PLACE (X2) .05
 THREE DECIMAL PLACE (X3) .010
 FRACTIONAL (X1/8) 1/32



DRAWING UNIT OF MEASURE: MM (INCH)
 SCALE: 1:1
 SHEET 1 OF 1



ISOMETRIC VIEW

NOTES:
 1) USE SERVICABLE THREADLOCKER ON ALL FASTENERS TO ENGINE COMPONENTS AND TORQUE ALL BOLTS TO S.A.E. SPECIFICATIONS.
 2) SEE "TRANSARCTIC A/C COMPRESSOR MOUNT INSTALLATION DISCLAIMER".

ITEM	QTY	U/M	PART NUMBER	DESCRIPTION
8	7	EACH	WLO06000	WASHER, LOCK, 3/8", 8, PLT
7	9	EACH	WFO06000	WASHER, FLAT, 3/8", 2, PLT
6	2	EACH	NTQ06000	NUT, HEX, 3/8-16UNC, 8, PLT
5	5	EACH	BTQ06125	BOLT, HEX, 3/8-16UNC x 1.25, 8, PLT,
4	2	EACH	BTQ06100	BOLT, HEX, 3/8-16UNC, 1", 8, PLT
3	1	EACH	BMC67095	BKT, DIAG, BRACE PS, FUSE PANEL, T3RE
2	1	EACH	BMC67094	BKT, DIAG, BRACE DS, FUSE PANEL, T3RE
1	1	EACH	BMC67093	BKT, FUSE PANEL, VERT., 1SB, T3RE

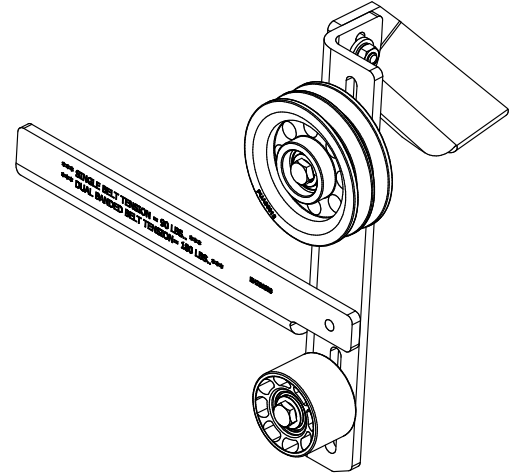
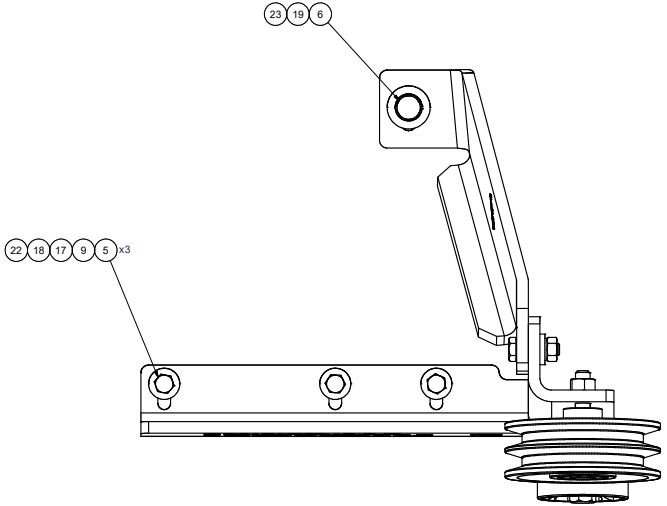
DRAWN		CHECKED		TITLE	
rodriquez	11/7/2014	Val Jaakowiew	11/7/2014	KIT, INST, RELOCATE PDU, TRANSIT MTS	
REV: ECN		DESCRIPTION		DATE: BY:	
0		WAS METRIC FASTENERS		3/11/2014 JRR	
0		RELEASED TO PRODUCTION		11/7/2014 JRR	
1		MFG		11/7/2014	
1		APPROVED		11/7/2014	
1		APPROVED		11/7/2014	

UNSPECIFIED TOLERANCES:	ALL DIM	FINISH
ONE DECIMAL PLACE (.X)	MM	32
TWO DECIMAL PLACE (.XX)	MM	125
THREE DECIMAL PLACE (.XXX)	MM	125R
FRACTIONAL (X/16)	INCHES	32

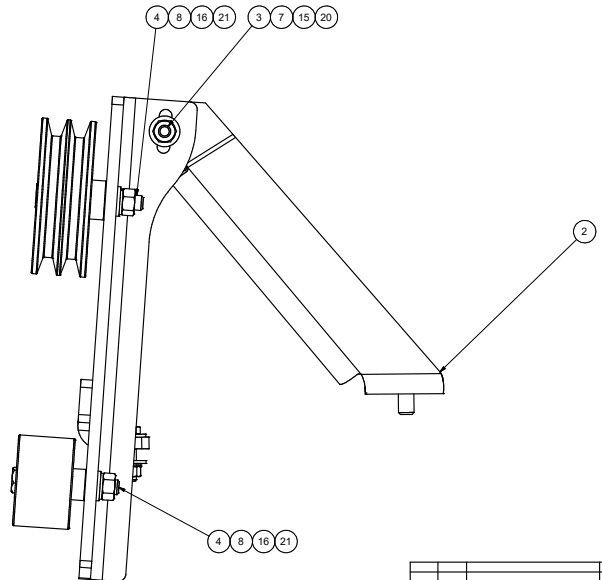
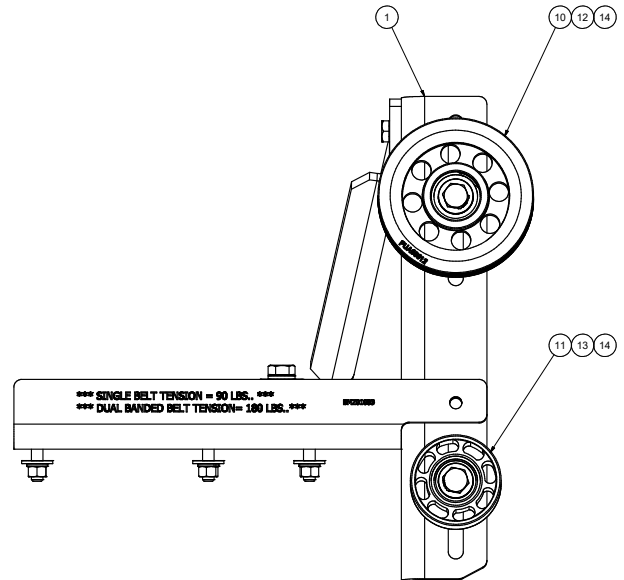


DRAWING UNIT OF MEASURE	MM (INCH)	SCALE	1:2	DWG NO	KIZ00001	REV	1
-------------------------	-----------	-------	-----	--------	----------	-----	---

8 7 6 5 4 3 2 1



ISOMETRIC VIEW



*** SINGLE BELT TENSION = 90 LBS. ***
 *** DUAL BANDED BELT TENSION = 180 LBS. ***

NOTES:
 1) USE SERVICABLE THREADLOCKER ON ALL FASTENERS TO ENGINE COMPONENTS AND TORQUE ALL BOLTS TO S.A.E. SPECIFICATIONS.
 2) SEE "TRANSARCTIC A/C COMPRESSOR MOUNT INSTALLATION DISCLAIMER".

ITEM	QTY	U/M	PART NUMBER	DESCRIPTION
23	1	EACH	WLQ08000	WASHER, LOCK, 1/2", 8, PLT
22	3	EACH	WLP06000	WASHER, LOCK, 3/8", 5, PLT
21	2	EACH	WLA12000	WASHER, LOCK, 12mm, 8.8, PLT
20	1	EACH	WLA10000	WASHER, LOCK, 10mm, 8.8, PLT
19	1	EACH	WFS08001	WASHER, FLAT, 1/2", 8, USS, PLT
18	3	EACH	WFS06004	Washer, Flat, 3/8", Gr. 9, USS, Pk
17	3	EACH	WFM06000	WASHER, FLAT, 3/8", 2, PLT
16	2	EACH	WFA12000	WASHER, FLAT, 12mm, 8.8, PLT
15	1	EACH	WFA10002	WASHER, FLAT, 10mm, HVY, 8.8, PLT
14	2	EACH	SLV17012	SLEEVE, PULLEY, 16.90 x 22.23 mm x12.19i
13	1	EACH	SCD25412	SPACER, COL. DRL, 25.4mm x 25.40 x12.3i
12	1	EACH	SCD21912	SPACER, COL. DRL, 21.9mm x 31.80 x12.3i
11	1	EACH	PUL80074	PULLEY, IDLER, BACKSIDE, P8, 74D, 46.27W
10	1	EACH	PUA05012	PULLEY, ASSY, IDLER, B/BX gr, 5" STL, PLT
9	3	EACH	NTF06000	NUT, HEX, 3/8-16UNC, 5, PLT
8	2	EACH	NTA12000	NUT, HEX, 12 x 1.75, 8.8, PLT
7	1	EACH	NTA10000	NUT, HEX, 10 x 1.5, 8.8, PLT
6	1	EACH	BTQ08126	BOLT, HEX, 1/2-20UNF x 1.25, 8, PLT
5	3	EACH	BTQ06150	BOLT, HEX, 3/8-16UNC, 1.50", 8, PLT
4	2	EACH	BTC12080	BOLT, HEX, 12 x 1.5 x 80mm, 10.9, PLT, FT
3	1	EACH	BTC10035	BOLT, HEX, 10 x 1.5 x 35mm, 10.9, PLT
2	1	EACH	BMZ01086	BKT, DIAG, BRACE, BB, T3RE, '22
1	1	EACH	BMZ01083	BKT, FRT, ANGLE, WELDMT, BB, T3RE, '22

DRAWN		11/25/2021		TITLE	
vjakowlew		11/25/2021		KIT, TENSIONER BRACKET, ASS'Y, '22	
CHECKED		11/25/2021		DWG NO	
Jose Rodriguez		11/25/2021		KTT00006	
BY: James Stewart		11/25/2021		REV	
APPROVED		11/25/2021		0	
Dale Mason		11/25/2021		SCALE	
1:2		SHEET		1 OF 1	

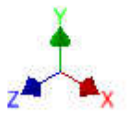
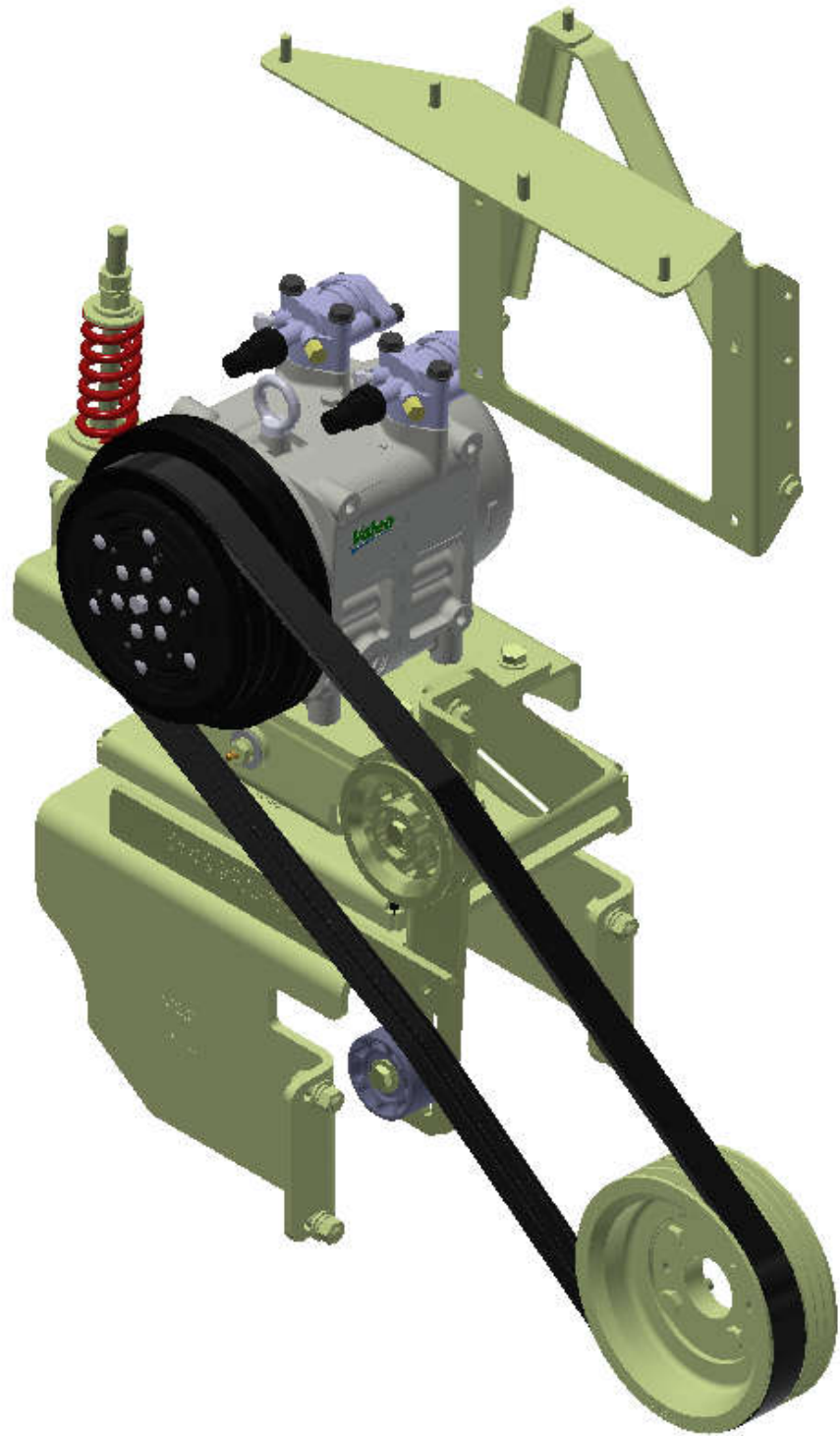
REV	ECN	DESCRIPTION	DATE	BY
0		RELEASED TO PRODUCTION	11/28/2021	VJA/vj

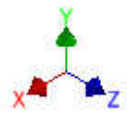
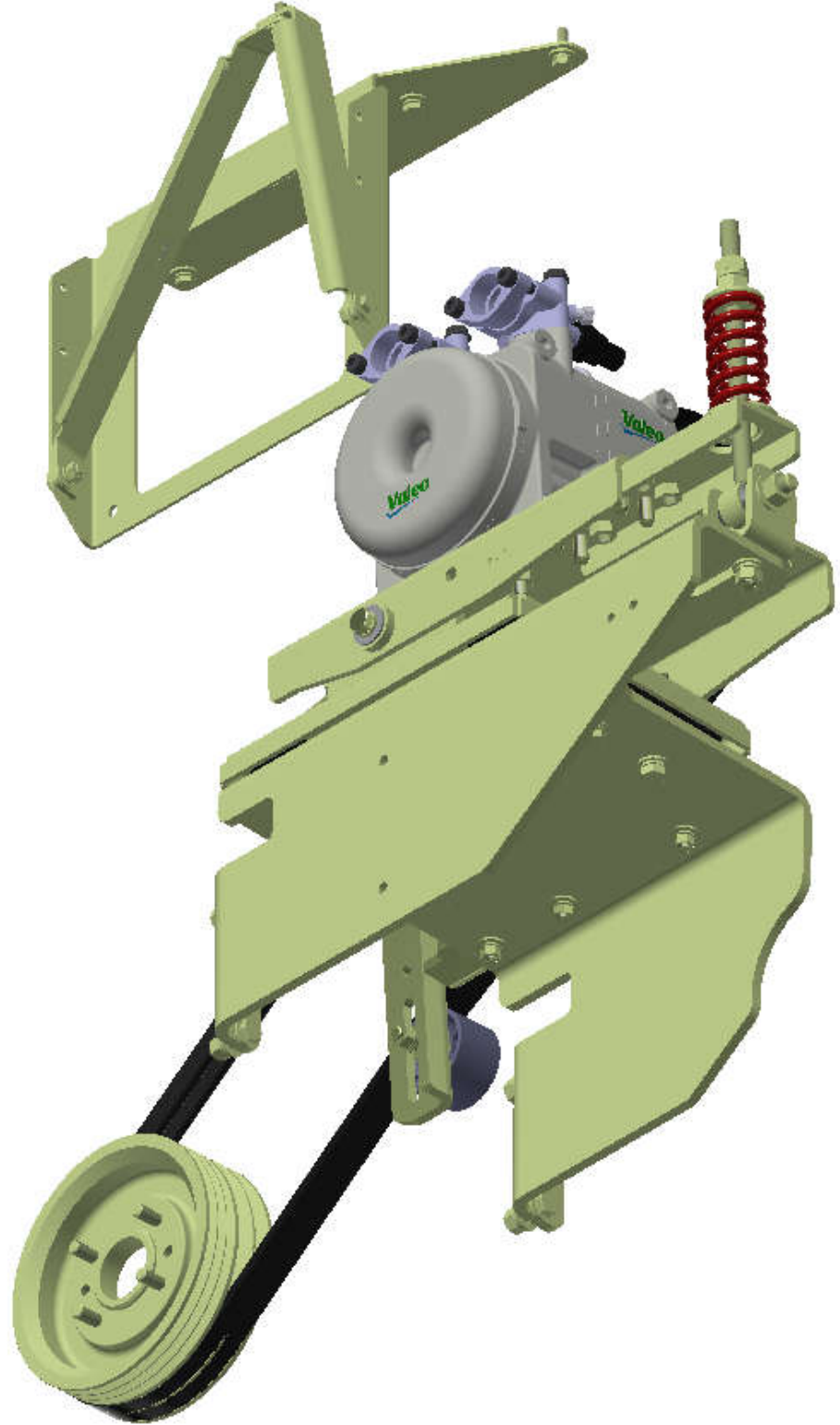
UNSPECIFIED TOLERANCES: ALL DIMS
 ONE DECIMAL PLACE (X1) .10 INCH
 TWO DECIMAL PLACE (X2) .02 INCH
 THREE DECIMAL PLACE (X3) .01 INCH
 FRACTIONAL (X1/8) .005 INCH

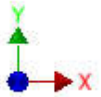
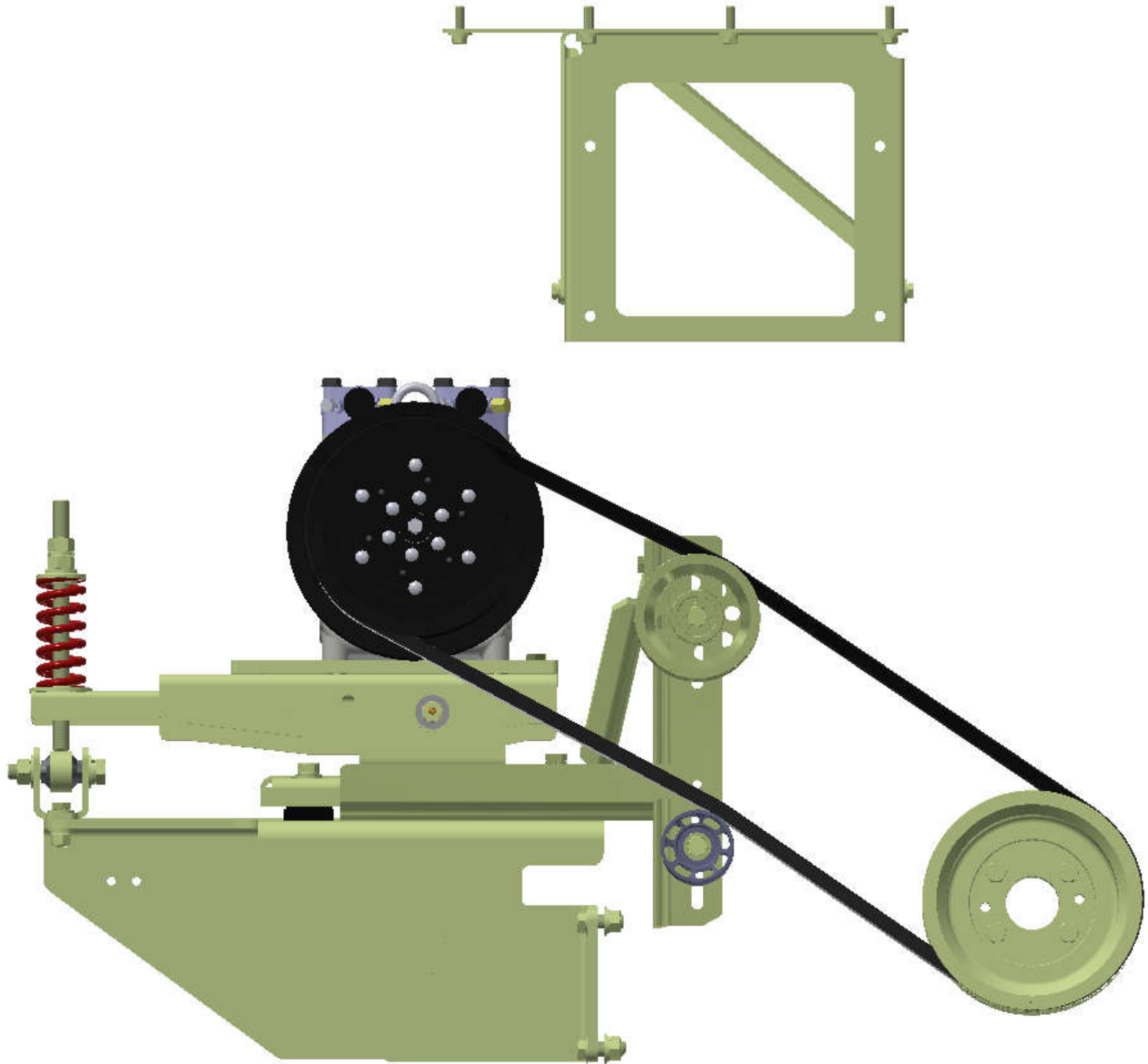


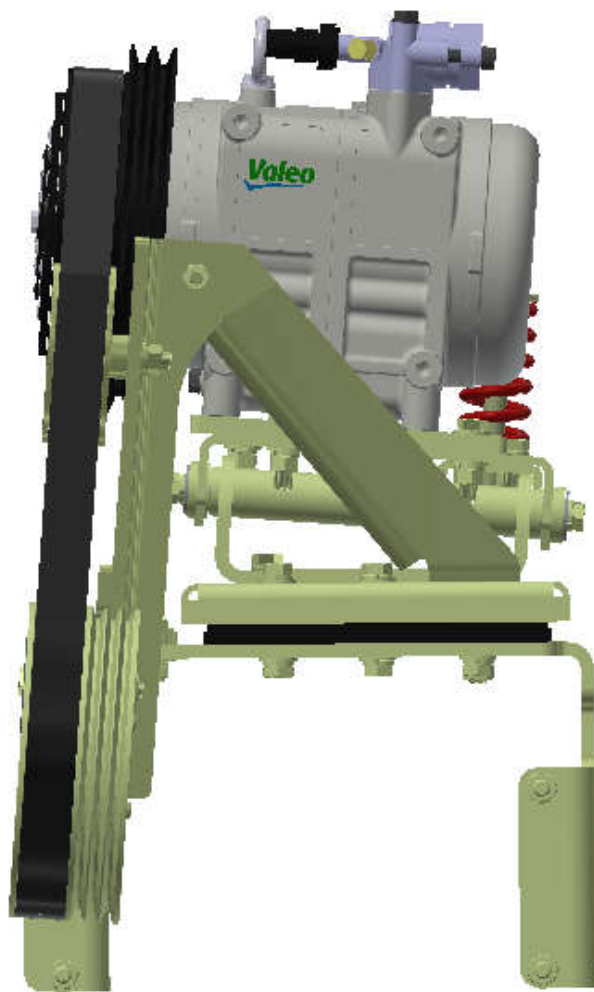
DRAWING UNIT OF MEASURE: MM (INCH)

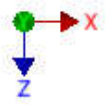
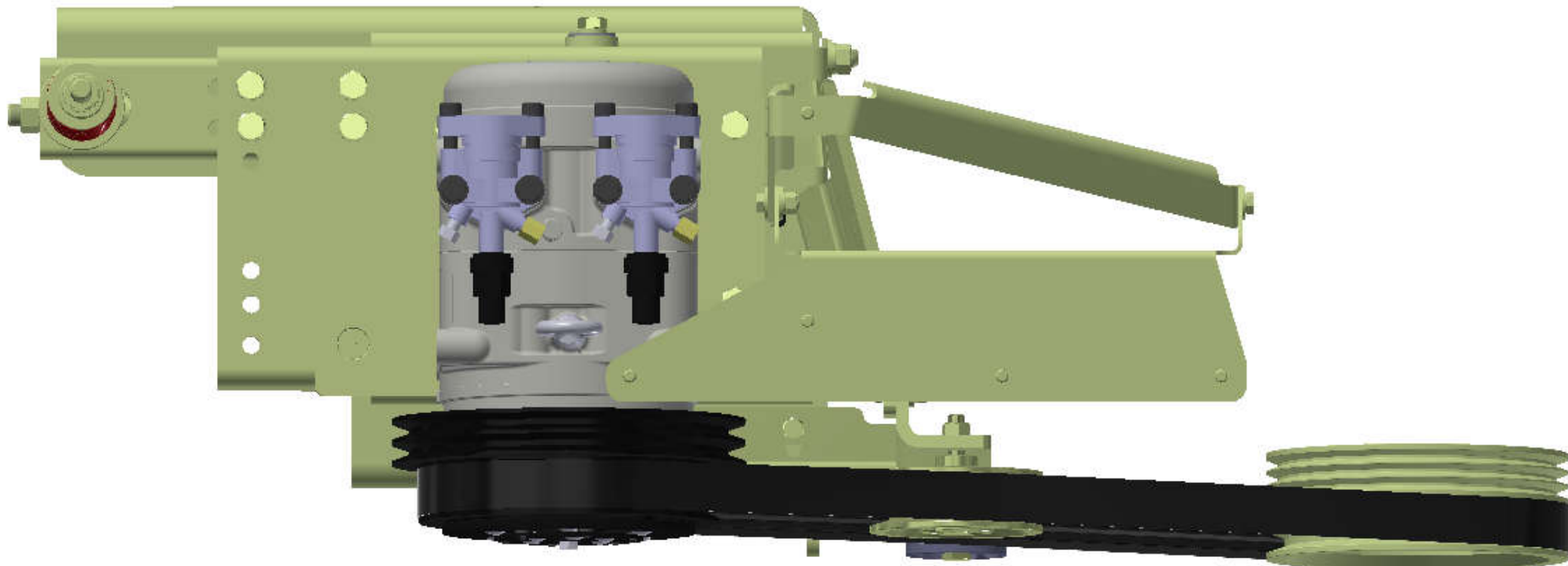
8 7 6 5 4 3 2 1











TransArctic A/C Compressor Mount Installation Disclaimer

All compressor mounts should be installed by qualified and trained personnel using proper tools and equipment in safe working conditions following industry standard guidelines for motor vehicle service and repair.

The installer of any compressor mount purchased from TransArctic must undertake all responsibility of issues arising from that compressor bracket being installed on any vehicle. As well as insure that a **proper and sufficient ground** is established between the compressors' clutches and the vehicle's engine. Mount functionality, operation and durability can all be compromised by an incompetent installation.

Due to the many different situations, parameters and application criteria, which are beyond the compressor mount manufacturer's control, TransArctic does not warrant design, durability, or operational functionality of any compressor mount improperly installed by another party.

With no implied guarantees it is the mount installer's strict responsibility to determine safety and functionality, of the compressor mount, at the time of installation.

Please contact TransArctic with any issue arising from installation so we may better improve the product. If you have any reservations about the compressor mount integrity contact TransArctic immediately at 1-877-COLD-AIR.

Mark OEM tensioner location

Install Kit

Check for Interferences

Check to ensure that the proper OEM tensioner orientation is maintained

Run engine with A/C system engaged for at least 10 minutes to run in belt

Check OEM tensioner orientation and adjust as required

Responsabilidad limitada de TransArctic en la instalación del soporte del compresor

Todos los soportes de los compresores deben ser instalados por personas calificadas y entrenadas, usando para ello los equipos y herramientas necesarios para esta labor en buenas condiciones y según las normas y guías para el servicio y/o reparación de motores de vehículos.

El instalador de los soportes comprados en TransArctic asume toda la responsabilidad de cualquier problema que surga en el soporte del compresor al vehículo; de igual manera es responsable que el cable a tierra sea conectado entre el embrague del compresor y el motor del vehículo.

Se advierte que el buen funcionamiento y la durabilidad del soporte pueden ser comprometidos por defectos en su instalación.

Debido a las diversas situaciones que se puedan presentar fuera del control del fabricante, TransArctic no garantiza el diseño, la durabilidad o el correcto funcionamiento de cualquier equipo inapropiadamente instalado por terceros.

Esta sobreentendido que el Instalador del montaje del compresor es estrictamente responsable de la seguridad y funcionamiento del equipo en el momento de la instalación.

Si tuviera algún problema o duda acerca de la instalación del soporte del compresor pongase en contacto inmediatamente con TransArctic al teléfono 1-877-COLD-AIR de modo que podamos mejorar nuestro producto.

Note la ubicación del medidor de tensión OEM

Instale el equipo

Controlar si hay interferencias.

Asegurese que el medidor de tensión mantenga la orientación justa.

Encienda el motor por lo menos 10 minutos con el sistema A/C enganchado para que la correa corra

Controle la orientación justa del medidor de tensión y ajuste a las condiciones requeridas del fabricante