

Bill of Materials Listing

TransArctic Canada Inc.

11/4/2010
Page 1 of 1

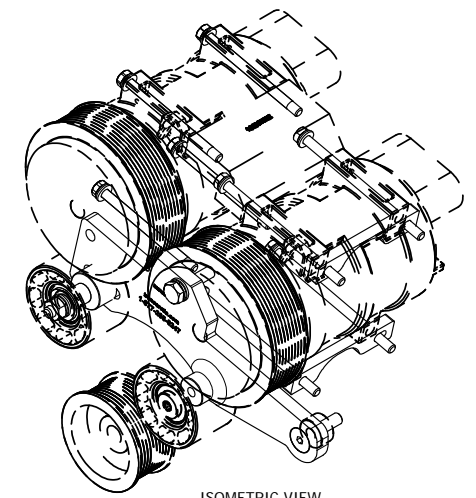
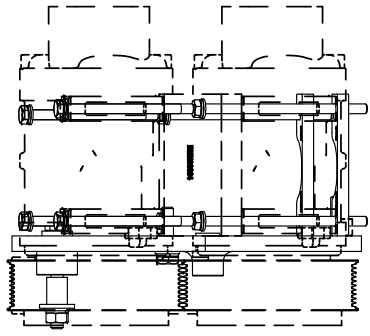
Product Number	Description	Date	Weight	Uof M	Yield
Line Component Prod#	Description	Bin Unit	Qty		
KRN82620	Mt. Kit, Retrofit, MF DT, FE300, 07-09		8/30/2004	2.31	0
30	BMN80066		Bkt, Idler, Slot PL, Weldmnt, FE300, '09	each	1
60	KBR82620		Bag Kit, Fasteners, KRN82620	each	1
61	BMS16022		Bkt, TM-16 Spacer Plate	each	2
64	SCD20010		Spacer, Col, Drl, 20mm x 33.34o x 10.32i	each	1
66	SLV17010		Sleeve, Pulley, 16.9o x 22.23mm x 10.32i	each	1

Bill of Materials Listing

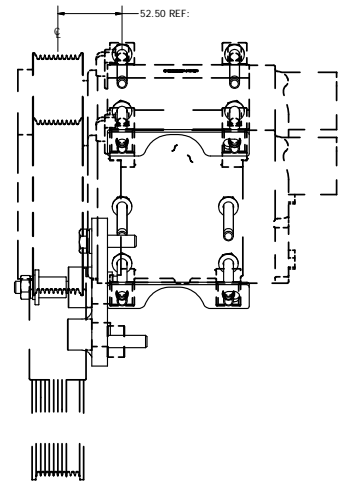
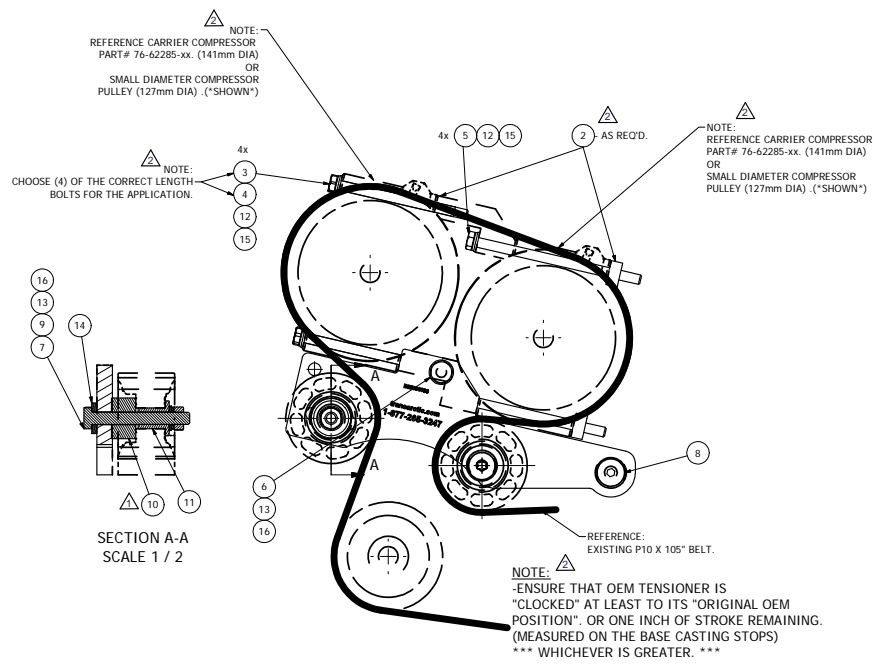
TransArctic Canada Inc.

11/4/2010
Page 1 of 1

Product Number	Description	Date	Weight	Uof M	Yield
Line Component Prod# Description	Bin	Unit	Qty		
KBR82620	Bag Kit, Fasteners, KRN82620	5/3/2007	1.69		0
5 BTC08110	Bolt, Hex, 8 x 1.25 x 110mm, 10.9, Plt	each	4		
10 BTC08100	Bolt, Hex, 8 x 1.25 x 100mm, 10.9, Plt	each	4		
20 BTC08140	Bolt, Hex, 8 x 1.25 x 140mm, 10.9, Plt	each	4		
21 BTC10080	Bolt, Hex, 10 x 1.5 x 80mm, 10.9, Plt,FT	each	1		
30 BTC10040	Bolt, Hex, 10 x 1.5 x 40mm, 10.9, Plt,FT	each	1		
40 CSF10046	Capscrew, FH, 10 x 1.5 x 45mm, 10.9,Plt	each	1		
50 WFA08000	Washer, Flat, 8mm, 8.8, Plt	each	8		
60 WLA08000	Washer, Lock, 8mm, 8.8, Plt	each	8		
62 NTA10000	Nut, Hex, 10 x 1.5, 8.8, Plt	each	1		
70 WFA10000	Washer, Flat, 10mm, 8.8, Plt	each	2		
80 WLA10000	Washer, Lock, 10mm, 8.8, Plt	each	2		
85 WFA10002	Washer, Flat, 10mm, Hvy, 8.8, Plt	each	1		



ISOMETRIC VIEW



- NOTES:
- 1) USE SERVICABLE THREADLOCKER ON ALL FASTENERS TO ENGINE COMPONENTS AND TORQUE **ALL** BOLTS TO S.A.E. SPECIFICATIONS.
 - 2) SEE "TRANSARCTIC A/C COMPRESSOR MOUNT INSTALLATION DISCLAIMER".

ITEM	QTY	U/M	PART NUMBER	DESCRIPTION
16	2	EACH	WLA10000	WASHER, LOCK, 10mm, 8.8, PLT
15	8	EACH	WLA8000	WASHER, LOCK, 8mm, 8.8, PLT
14	1	EACH	WFA10002	WASHER, FLAT, 10mm, HVV, 8.8, PLT
13	2	EACH	WFA10000	WASHER, FLAT, 10mm, 8.8, PLT
12	8	EACH	WFA8000	WASHER, FLAT, 8mm, 8.8, PLT
11	1	EACH	SLV17010	SLEEVE, PULLEY, 16.9x x 22.23mm x 10.32t
10	1	EACH	SCD20010	SPACER, COL, 20mm x 33.34x x 10.32t
9	1	EACH	NTA10000	NUT, HEX, 10 x 1.5, 8.8, PLT
8	1	EACH	CSF10046	CAPSCREW, FH, 10 x 1.5 x 45mm, 10.9, PLT
7	1	EACH	BTC10080	BOLT, HEX, 10 x 1.5 x 80mm, 10.9, PLT, FT
6	1	EACH	BTC10040	BOLT, HEX, 10 x 1.5 x 40mm, 10.9, PLT
5	4	EACH	BTC08140	BOLT, HEX, 8 x 1.25 x 140mm, 10.9, PLT
4	4	EACH	BTC08110	BOLT, HEX, 8 x 1.25 x 110mm, 10.9, PLT
3	4	EACH	BTC08100	BOLT, HEX, 8 x 1.25 x 100mm, 10.9, PLT
2	2	EACH	BM156022	BKT, TM-16, SPACER PLATE
1	1	EACH	BMN80066	BKT, IDLER, WELDMENT, FE300, 07-09

TRANSARCTIC INC.

MT. KIT, Retrofit, MF DT, FE300, 07-09

DRAWN: JStewart 3/17/2009
 CHECKED: James Stewart 3/17/2009
 RELEASED TO PRODUCTION: 3/18/2009
 REVISION: Ron Ingram 3/17/2009
 APPROVED: Dale Mason 3/17/2009

UNSPECIFIED TOLERANCES: ALL DIM. ANGULAR ± .01
 ONE DECIMAL PLACE (.X) .00 .010
 TWO DECIMAL PLACE (.XX) .00 .005
 THREE DECIMAL PLACE (.XXX) .00 .002

THIRD ANGLE PROJECTION

DRAWING UNIT OF MEASURE: MM (INCH)
 SCALE: 1:2

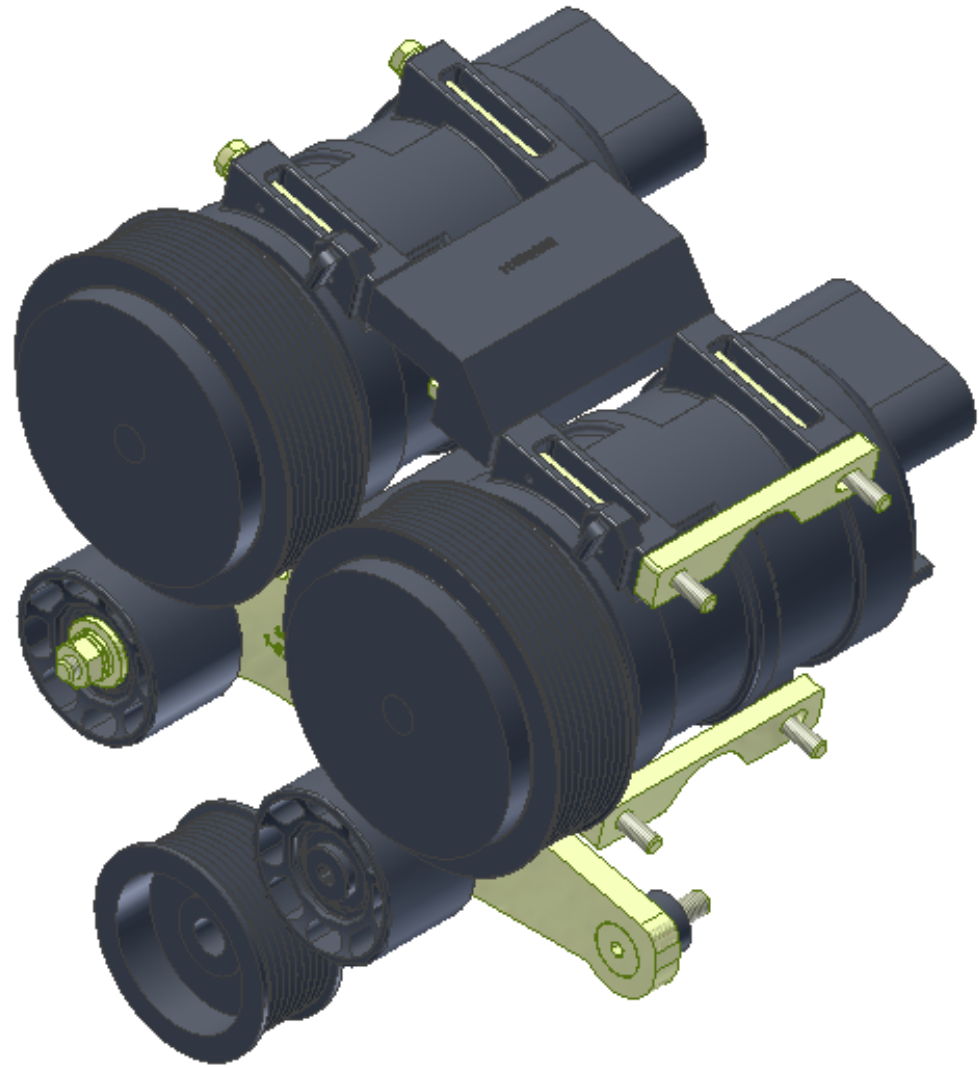
REV 2

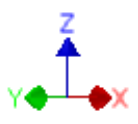
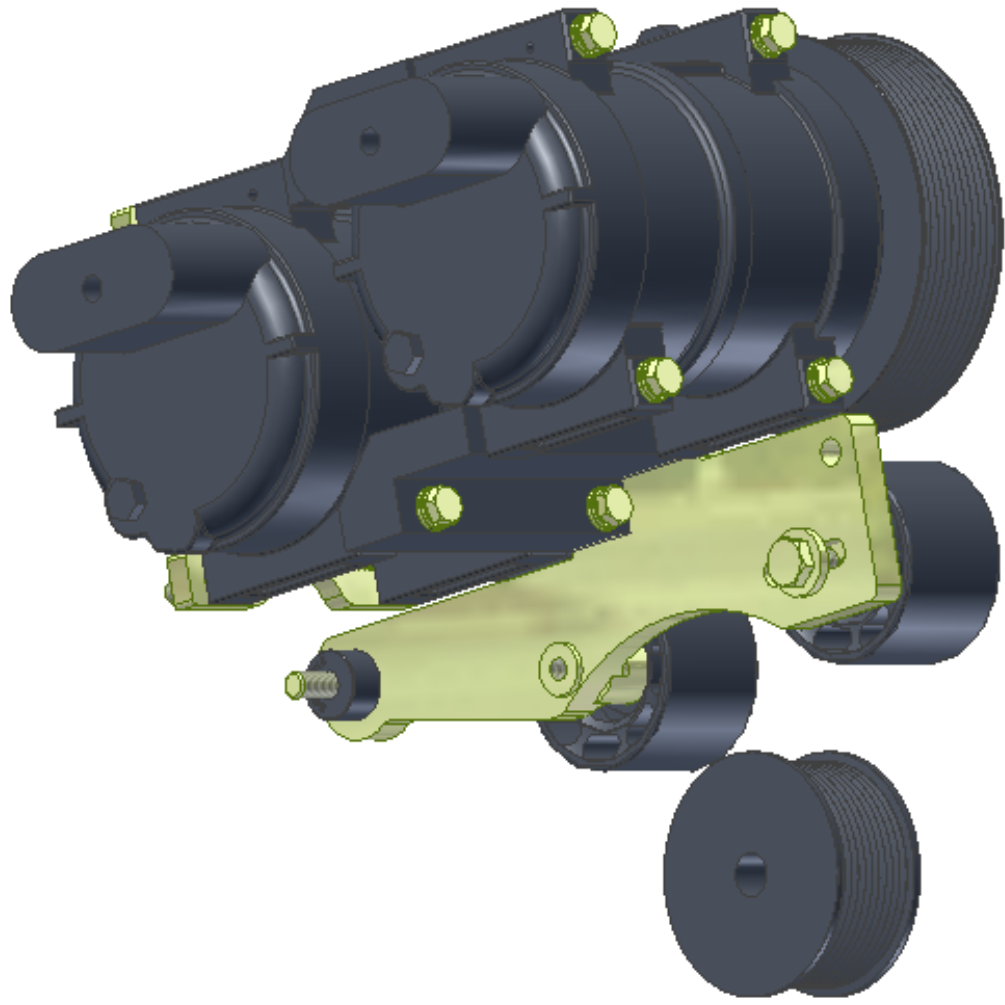
SHEET 1 OF 1



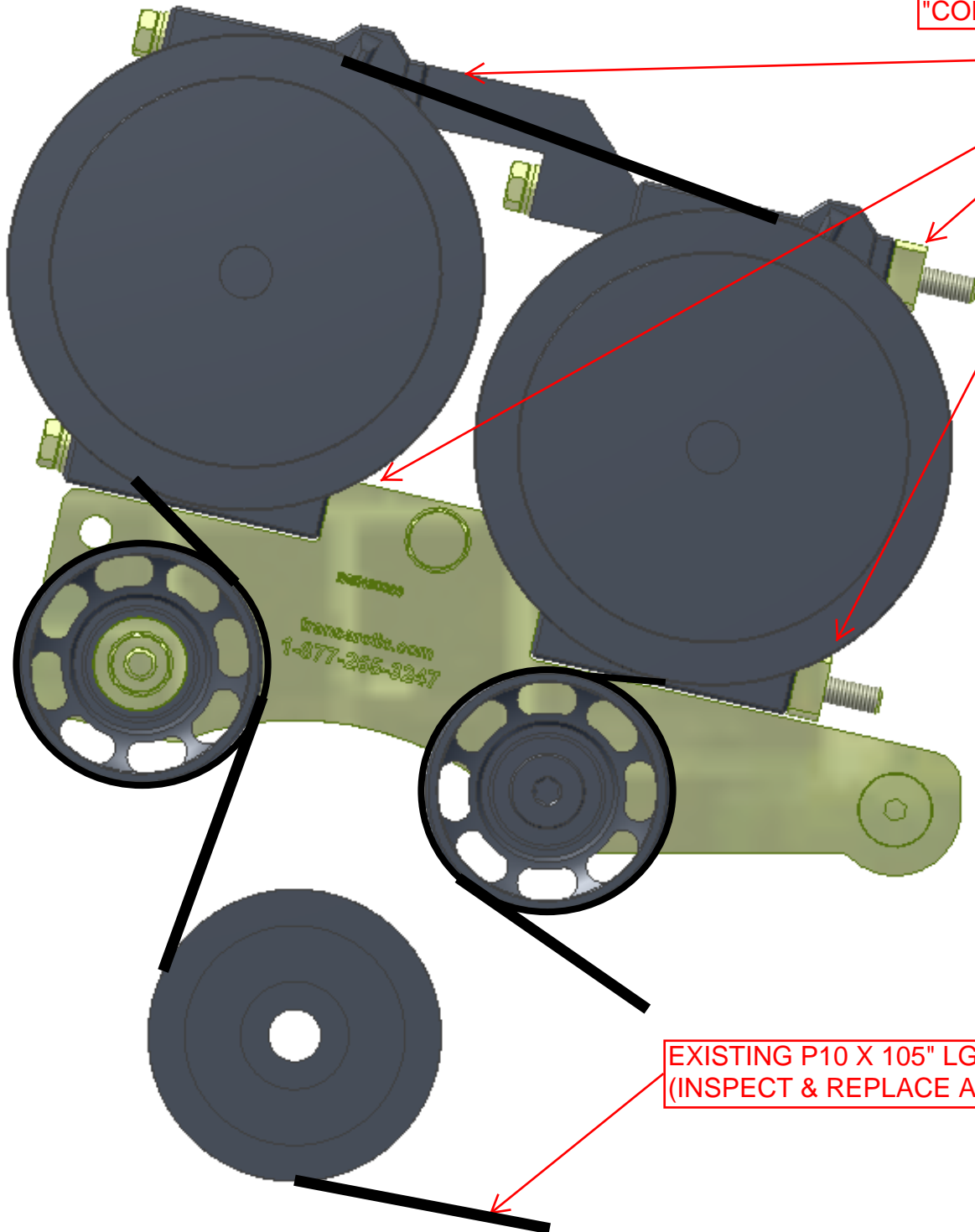
+ 1.00" for optimum running condition. (Initial set-up)

The image shows a close-up of a mechanical pulley assembly. A red double-headed arrow is drawn across the top of the pulley, indicating a specific adjustment. The pulley is mounted on a shaft, and a V-belt is visible on the left side. The background is dark, suggesting an industrial or workshop setting.

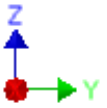


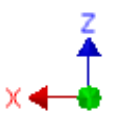
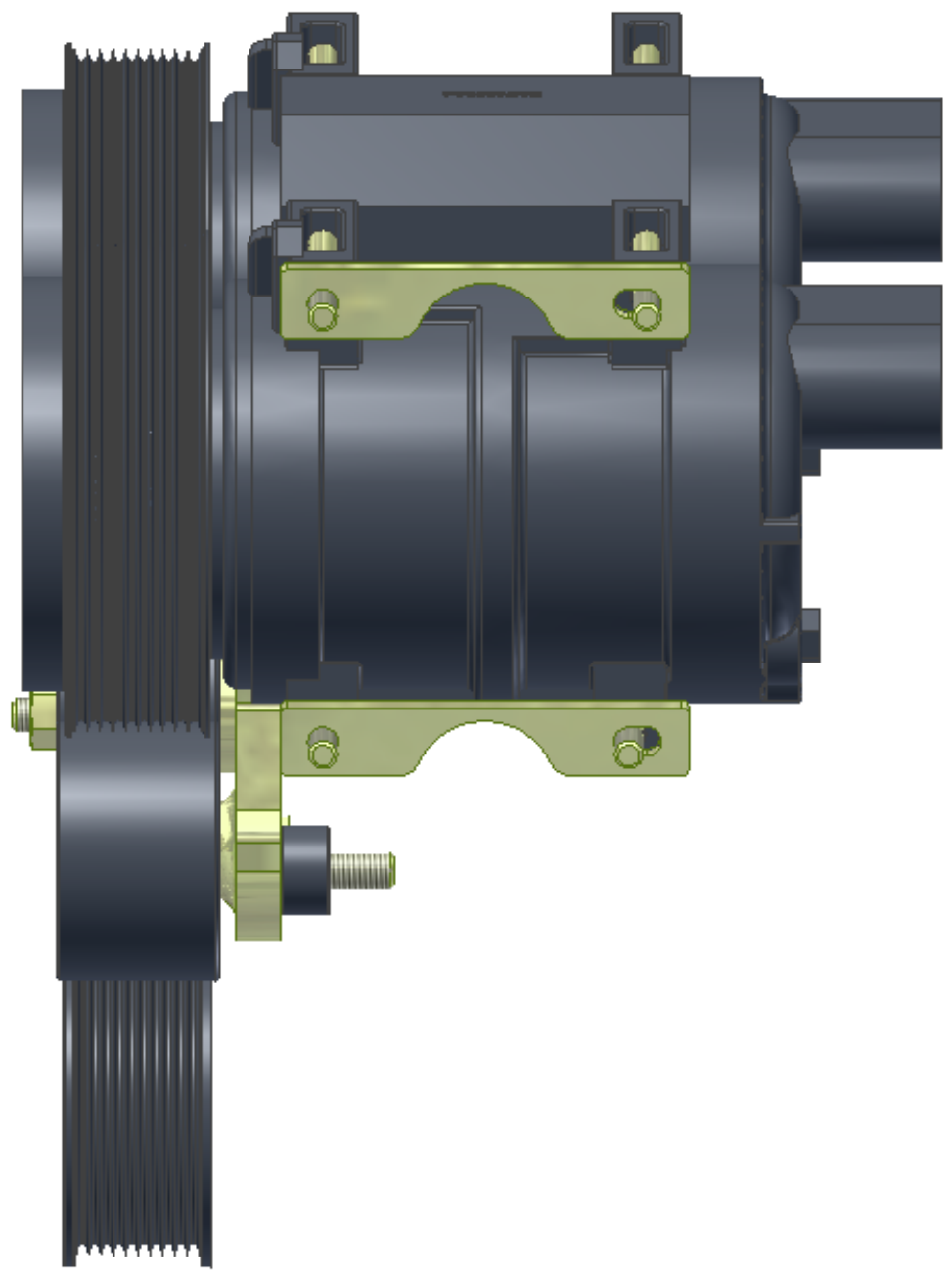


USE SPACER BARS AS NEEDED FOR CONVERSION TO LARGER "COMPRESSOR PULLEYS".



EXISTING P10 X 105" LG. BELT.
(INSPECT & REPLACE AS REQ'D.)





TransArctic A/C Compressor Mount Installation Disclaimer

All compressor mounts should be installed by qualified and trained personnel using proper tools and equipment in safe working conditions following industry standard guidelines for motor vehicle service and repair.

The installer of any compressor mount purchased from TransArctic must undertake all responsibility of issues arising from that compressor bracket being installed on any vehicle. As well as insure that a **proper and sufficient ground** is established between the compressors' clutches and the vehicle's engine. Mount functionality, operation and durability can all be compromised by an incompetent installation.

Due to the many different situations, parameters and application criteria, which are beyond the compressor mount manufacturer's control, TransArctic does not warrant design, durability, or operational functionality of any compressor mount improperly installed by another party.

With no implied guarantees it is the mount installer's strict responsibility to determine safety and functionality, of the compressor mount, at the time of installation.

Please contact TransArctic with any issue arising from installation so we may better improve the product. If you have any reservations about the compressor mount integrity contact TransArctic immediately at 1-877-COLD-AIR.

Mark OEM tensioner location

Install Kit

Check for Interferences

Check to ensure that the proper OEM tensioner orientation is maintained

Run engine with A/C system engaged for at least 10 minutes to run in belt

Check OEM tensioner orientation and adjust as required

Responsabilidad limitada de TransArctic en la instalación del soporte del compresor

Todos los soportes de los compresores deben ser instalados por personas calificadas y entrenadas, usando para ello los equipos y herramientas necesarios para esta labor en buenas condiciones y según las normas y guías para el servicio y/o reparación de motores de vehículos.

El instalador de los soportes comprados en TransArctic asume toda la responsabilidad de cualquier problema que surga en el soporte del compresor al vehículo; de igual manera es responsable que el cable a tierra sea conectado entre el embrague del compresor y el motor del vehículo.

Se advierte que el buen funcionamiento y la durabilidad del soporte pueden ser comprometidos por defectos en su instalación.

Debido a las diversas situaciones que se puedan presentar fuera del control del fabricante, TransArctic no garantiza el diseño, la durabilidad o el correcto funcionamiento de cualquier equipo inapropiadamente instalado por terceros.

Esta sobreentendido que el Instalador del montaje del compresor es estrictamente responsable de la seguridad y funcionamiento del equipo en el momento de la instalación.

Si tuviera algún problema o duda acerca de la instalación del soporte del compresor pongase en contacto inmediatamente con TransArctic al teléfono 1-877-COLD-AIR de modo que podamos mejorar nuestro producto.

Note la ubicación del medidor de tensión OEM

Instale el equipo

Controlar si hay interferencias.

Asegurese que el medidor de tensión mantenga la orientación justa.

Encienda el motor por lo menos 10 minutos con el sistema A/C enganchado para que la correa corra

Controle la orientación justa del medidor de tensión y ajuste a las condiciones requeridas del fabricante