

Bill of Materials Listing

TransArctic Canada Inc.

9/13/2017
Page 1 of 1

Product Number	Description	Date	Weight	Uof M	Yield
Line Component Prod#	Description	Bin Unit	Qty		
KMC84161	Mt Kit, ISC, BBRE, O5G, 2B, 8" Crank,'07		8/31/2007	228.51	0
5	BEL22592		Belt, B gr, 2591mm (102") (BP99)	each	2
10	KBB84161		Mt Kit, Base, Transit, A3RE, '07	each	1
20	KGT84161		Kit, Platform, O5G, '07	each	1
30	KPC84161		Kit, Pulley, ISC, A3RE, '07	each	1
40	KAC84161		Kit, Alt. 24V, ISC, BBRE, '07	each	1

Bill of Materials Listing

TransArctic Canada Inc.

9/11/2017
Page 1 of 1

Product Number	Description	Date	Weight	Uof M	Yield
Line Component Prod#	Description	Bin Unit	Qty		
KBB84161	Mt Kit, Base, Transit, A3RE, '07	8/31/2007	161.81		0
20 BMC83019	Bkt, Gusset, Bumper, ISC, BBRE, '07	each	1		
30 BMC83020	Bkt, Dampner, ISC, BBRE, '07	each	1		
40 BMC83021	Bkt, Comp, Frt, ISC, BBRE, '07	each	1		
50 BMC83022	Bkt, Comp, Rear, ISC, BBRE, '07	each	1		
60 BMC83023	Bkt, Gusset, Idler, ISC, BBRE, '07	each	1		
70 BMC83024	Bkt, Main, Idler, ISC, BBRE, '07	each	1		
80 BMC83026	Bkt, Sprt, Bump, Rear, ISC, BBRE, '07	each	1		
90 BMC83027	Bkt, Sprt, Bump, Side, ISC, BBRE, '07	each	1		
100 BMC83028	Bkt, Tray, ISC, BBRE, '07	each	1		
110 BMC83029	Bkt, Shift, Tank, Weldmt, ISC, BBRE, '07	each	1		
115 BMC83031	Bkt, Slide, Block, Idler, BBRE	each	1		
120 BMN80008	Vibration Isolator, Bar, 16.50 x 2 x 1.50	each	2		
130 BMN80009	Bkt, Main, Base Pl, IC, RE300	each	1		
160 BMN80025	Bkt, Back, PL, Slide, IC, RE300	each	1		
170 PUA05012	Pulley, Assy, Idler, B/BX gr, 5", STL, Plt	each	1		
180 PUA05001	Pulley, Assy, Idler, B/S, 5", Stl, Plt	each	1		
220 SCD32812	Spacer, Step, Drl, 32.8mm x 50.8o x 12.3i	each	1		
225 SPC19010	Spacer, Col, Drl, 19mm x 28.58o x 10.32i	each	2		
240 SCD48012	Spacer, Col, Drl, 48 mm x 34.9o x 12.3i	each	1		
250 SLV17012	Sleeve, Pulley, 16.9o x 22.23mm x 12.32i	each	2		
280 KBT84161	Bag Kit, Fasteners, KBB84161/64161	each	1		

PUA06001 changed to PUA05001 - MAY-24-12 - VAL

Bill of Materials Listing

TransArctic Canada Inc.

11/27/2007

Page 1 of 1

Product Number		Description	Bin	Date	Weight	Uof M	Yield
Line	Component Prod#	Description		Unit	Qty		
KBT84161		Bag Kit, Fasteners, KBB84161		08/29/07	5.31		0
10	BTC08020	Bolt, Hex, 8 x 1.25 x 20mm, 10.9, Plt		each	2		
20	BTC08035	Bolt, Hex, 8 x 1.25 x 35mm, 10.9, Plt		each	1		
50	BTC12040	Bolt, Hex, 12 x 1.75 x 40mm, 10.9, Plt		each	10		
60	BTC12050	Bolt, Hex, 12 x 1.75 x 50mm, 10.9, Plt		each	1		
70	BTC12060	Bolt, Hex, 12 x 1.75 x 60mm, 10.9, Plt		each	1		
100	BTC12100	Bolt, Hex, 12 x 1.75 x 100mm, 10.9, Plt		each	2		
105	BTP08653	Bolt, Hex, 1/2-13unc, 6.5", 5, Plt, FT		each	1		
115	BTQ06200	Bolt, Hex, 3/8-16unc, 2.0", 8, Plt		each	2		
120	BTQ08126	Bolt, Hex, 1/2-20unf, 1.25", 8, Plt		each	12		
135	BTQ08200	Bolt, Hex, 1/2-13unc, 2.0", 8, Plt		each	3		
160	CSF06075	Capscrew, FH, 3/8-16 x .75", Alloy, Plt		each	2		
170	NTA08000	Nut, Hex, 8 x 1.25, 8.8, Plt		each	3		
190	NTA12000	Nut, Hex, 12 x 1.75, 8.8, Plt		each	13		
200	NTP06000	Nut, Hex, 3/8-16unc, 5, Plt		each	2		
230	WFA08000	Washer, Flat, 8mm, 8.8, Plt		each	4		
250	WFA12000	Washer, Flat, 12mm, 8.8, Plt		each	24		
270	WFQ08000	Washer, Flat, 1/2", 8, Plt		each	15		
280	WLA08000	Washer, Lock, 8mm, 8.8, Plt		each	3		
300	WLA12000	Washer, Lock, 12mm, 8.8, Plt		each	14		
330	WLQ08000	Washer, Lock, 1/2", 8, Plt		each	13		

Bill of Materials Listing

TransArctic Canada Inc.

11/27/2007

Page 1 of 1

Product Number		Description	Bin	Date	Weight	Uof M	Yield
Line	Component Prod#	Description		Unit	Qty		
KGT84161		Mt Kit, Transit, O5G, '07		10/19/07	10.76		0
10	BMN80010	Bkt, Main, Slide, Assy, O5G, IC, RE300		each	1		
20	BMN80024	Bkt, Comp, FRT, Z, IC, RE300		each	1		
30	SCD29213	Spacer, Col, Drl, 29.21mm x 25.4o x 12.7i		each	2		
40	BTQ06150	Bolt, Hex, 3/8-16unc, 1.50", 8, Plt		each	2		
50	NTP07000	Nut, Hex, 7/16-14unc, 5, Plt		each	4		
60	WFN06000	Washer, Flat, 3/8", 2, Plt		each	2		
70	WLP07000	Washer, Lock, 7/16", 5, Plt		each	4		
80	WLP06000	Washer, Lock, 3/8", 5, Plt		each	2		

Bill of Materials Listing

TransArctic Canada Inc.

11/27/2007

Page 1 of 1

Product Number		Description	Bin	Date	Weight	Uof M	Yield
Line	Component Prod#	Description		Unit	Qty		
KPC84161		Kit, Pulley, ISC, BBRE, '07		10/19/07	18.73		0
10	PUL83003	Pulley, Crank, ISC, 8.3L, 2B/X, 8"dia		each	1		
20	BTC12080	Bolt, Hex, 12 x 1.75 x 80mm, 10.9, Plt		each	4		
30	WFA12000	Washer, Flat, 12mm, 8.8, Plt		each	4		

Bill of Materials Listing

TransArctic Canada Inc.

11/27/2007

Page 1 of 1

Product Number		Description	Bin	Date	Weight	Uof M	Yield
Line	Component Prod#	Description		Unit	Qty		
KAC84161		Alt. Kit, 24V, ISC, BBRE, '07		10/18/07	11.78		0
10	BEL81257	Belt, 8gr, 1257mm (49.5") (5080495)		each	1		
20	BMC83015	Bkt, Alt, Weldmt, ISC, BBRE, '07		each	1		
30	PUL83008	Pulley, Fan, Add-on, Cum, ISC, 8.3, 8gr		each	1		
40	PUL80064	Pulley,ALT,Frontside,P8,63.5d (3972808)		each	1		
50	TEN80002	Tenr, HD Spring, BackSide, CCW (89200A)		each	1		
60	KBA84161	Bag Kit, Fasteners, KAC84161		each	1		

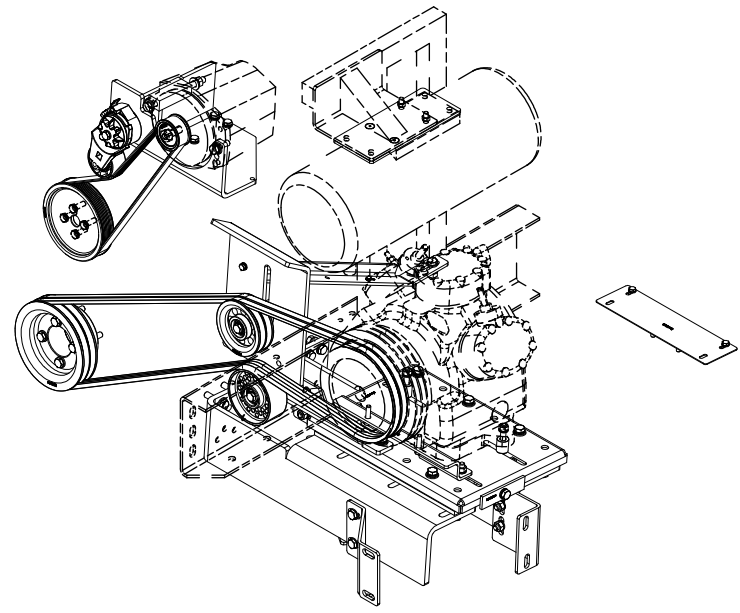
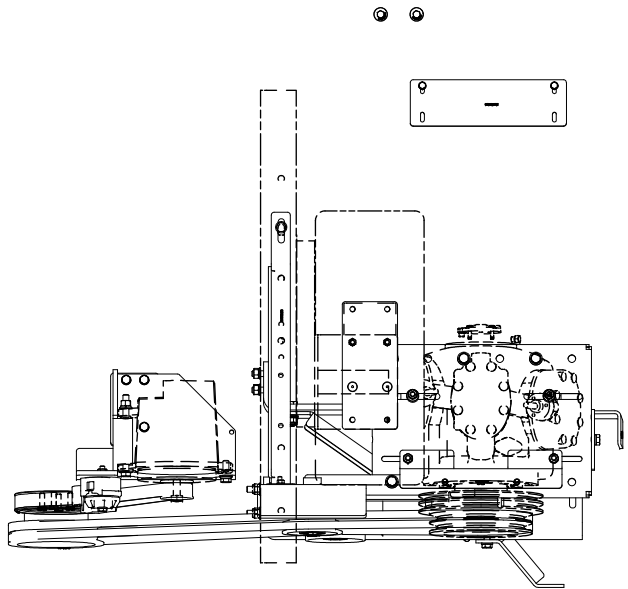
Bill of Materials Listing

TransArctic Canada Inc.

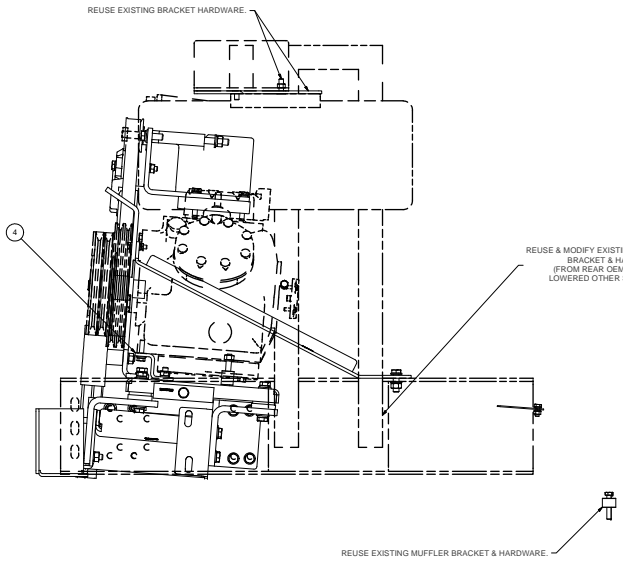
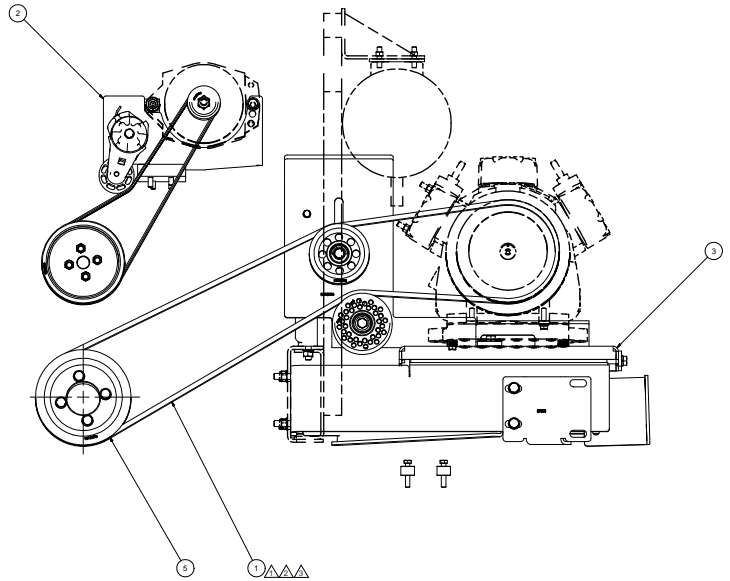
11/27/2007

Page 1 of 1

Product Number		Description	Bin	Date	Weight	Uof M	Yield
Line	Component Prod#	Description		Unit	Qty		
KBA84161		Bag Kit, Fasteners, KAC84161		10/19/07	1.08		0
10	BTC10090	Bolt, Hex, 10 x 1.5 x 90mm, 10.9, Plt		each	1		
20	BTC10055	Bolt, Hex, 10 x 1.5 x 55mm, 10.9, Plt,FT		each	4		
30	BTQ08653	Bolt, Hex, 1/2-13unc, 6.5", 8, Plt		each	1		
40	BTQ08150	Bolt, Hex, 1/2-13unc, 1.5", 8, Plt		each	1		
50	NTA10000	Nut, Hex, 10 x 1.5, 8.8, Plt		each	1		
60	NTP08000	Nut, Hex, 1/2-13unc, 5, Plt		each	1		
70	WFA10000	Washer, Flat, 10mm, 8.8, Plt		each	5		
80	WFQ08000	Washer, Flat, 1/2", 8, Plt		each	3		
90	WLA10000	Washer, Lock, 10mm, 8.8, Plt		each	5		
100	WLQ08000	Washer, Lock, 1/2", 8, Plt		each	2		



ISOMETRIC VIEW



REUSE EXISTING BRACKET HARDWARE

REUSE & MODIFY EXISTING EXHAUST SHIELD BRACKET & HARDWARE (FROM REAR OEM POSITION TO LOWERED OTHER SIDE OF TUBE)

REUSE EXISTING MUFFLER BRACKET & HARDWARE

NOTES:
 1) USE SERVICABLE THREADLOCKER ON ALL FASTENERS TO ENGINE COMPONENTS AND TORQUE ALL BOLTS TO S.A.E. SPECIFICATIONS.
 2) SEE "TRANSARCTIC A/C COMPRESSOR MOUNT INSTALLATION DISCLAIMER".

ITEM	QTY	UOM	PART NUMBER	DESCRIPTION
5	1	EACH	KPC84161	KIT PULLEY, ISC, ABRE, '07
4	1	EACH	KGT84161	MT KIT, TRANSIT, OSG, '07
3	1	EACH	KSB84161	MT KIT, BASE, TRANSIT, ABRE, '07
2	1	EACH	KAC84161	ALT. KIT, 24V, ISC, BBRE, '07
1	2	EACH	BEL22592	BELT, B gr, 2591mm (102")

△△△

REV	ECN	DESCRIPTION	DATE	BY
1		WAS BELT BEL22592	8/22/2007	JBK
2		CHANGED BELT	8/22/2007	JBK
3		REUSE EXISTING MUFFLER BRACKET	8/22/2007	JBK
4		REUSE EXISTING MUFFLER BRACKET	8/22/2007	JBK
5		REUSE EXISTING MUFFLER BRACKET	8/22/2007	JBK

REV	ECN	DESCRIPTION	DATE	BY
1		WAS BELT BEL22592	8/22/2007	JBK
2		CHANGED BELT	8/22/2007	JBK
3		REUSE EXISTING MUFFLER BRACKET	8/22/2007	JBK
4		REUSE EXISTING MUFFLER BRACKET	8/22/2007	JBK
5		REUSE EXISTING MUFFLER BRACKET	8/22/2007	JBK

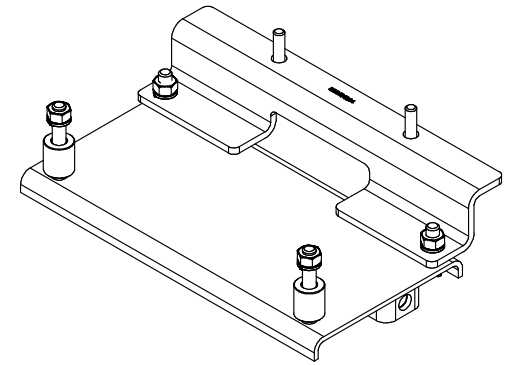
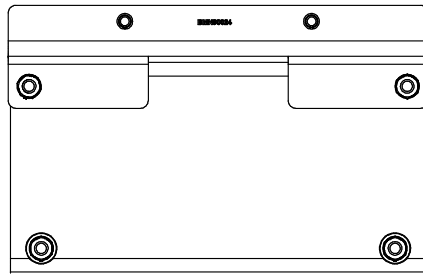
THIRD ANGLE PROJECTION

TRANSARCTIC INC.

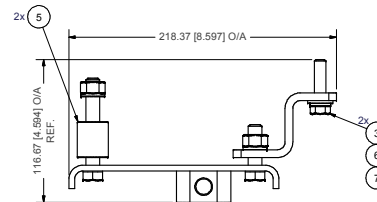
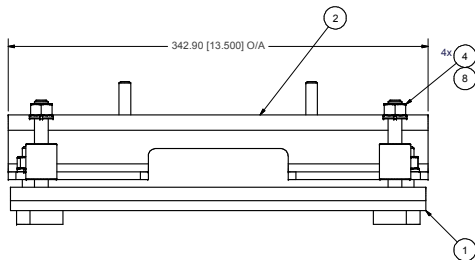
MT KIT, ISC, BBRE, OSG, 2B, 8" CRANK, '07

DWG NO: KMC84161

SHEET 1 OF 1



ISOMETRIC VIEW



NOTES:

- 1) USE SERVICABLE THREADLOCKER ON ALL FASTENERS TO ENGINE COMPONENTS AND TORQUE ALL BOLTS TO S.A.E. SPECIFICATIONS.
- 2) SEE "TRANSARCTIC A/C COMPRESSOR MOUNT INSTALLATION DISCLAIMER".
- 3) WEIGHT: 10.67 LB

ITEM	QTY	U/M	PART NUMBER	DESCRIPTION
8	4	EACH	WLP07000	WASHER, LOCK, 7/16", 5, PLT
7	2	EACH	WLP06000	WASHER, LOCK, 3/8", 5, PLT
6	2	EACH	WFN06000	WASHER, FLAT, 3/8", 2, PLT
5	2	EACH	SCD29213	SPACER, COL, DRL, 29.21mm x 25.4o x 12.7l
4	4	EACH	NTP07000	NUT, HEX, 7/16-14UNC, 5, PLT
3	2	EACH	BTQ06150	BOLT, HEX, 3/8-18UNC, 1.50", 8, PLT
2	1	EACH	BMN80024	BKT, COMP, FRT, Z, IC, RE300
1	1	EACH	BMN80010	BKT, MAIN, SLIDE, ASSY, IC, RE300

Parts List

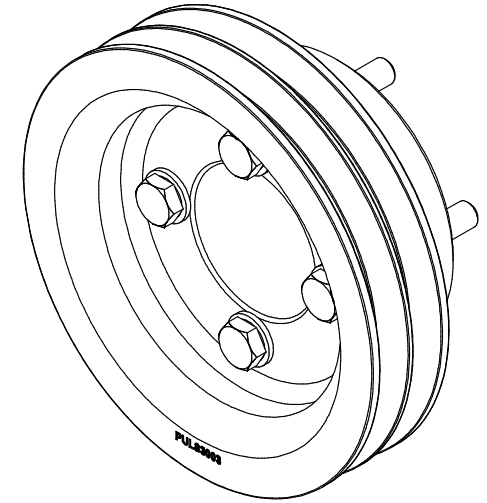
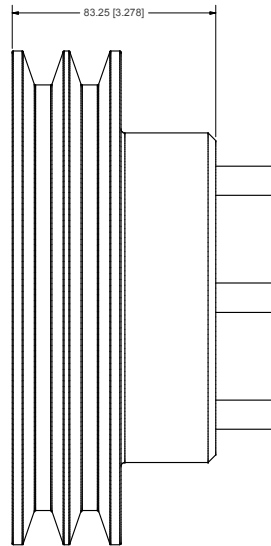
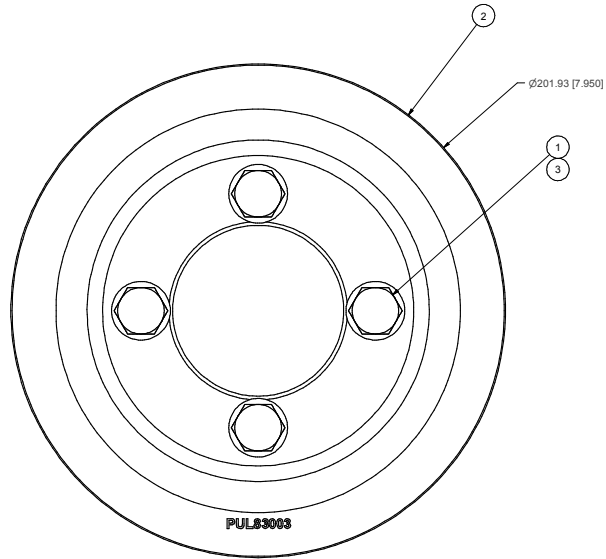
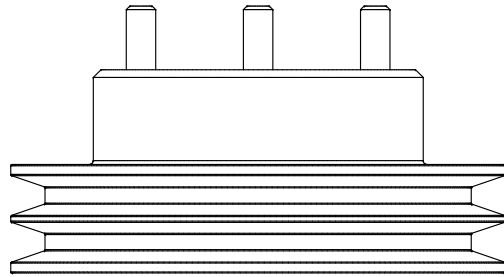
DRAWN	Jose Rodriguez	10/21/2008	TRANSARCTIC INC.
CHECKED	Val Jakowlew	10/21/2008	

RELEASED TO PRODUCTION	10/20/2008	BRK		
REV	ECN	DESCRIPTION	DATE	BY
		MFG	10/21/2008	Ron Ingram
		APPROVED	10/21/2008	Dale Mason

UNSPECIFIED TOLERANCES: (ALL DIM) FINISH
 ONE DECIMAL PLACE (10) .05 USE
 THIRDS DECIMAL PLACE (.001) .005 USE
 FRACTIONAL (1/32) .005 USE



DWG NO	REV
KGT84161	0
DRAWING UNIT OF MEASURE	SCALE
MM (INCH)	1 : 2



ISOMETRIC VIEW

- NOTES:**
 1) USE SERVICABLE THREADLOCKER ON ALL FASTENERS TO ENGINE COMPONENTS AND TORQUE **ALL** BOLTS TO S.A.E. SPECIFICATIONS.
 2) SEE "TRANSARGTIC A/C COMPRESSOR MOUNT INSTALLATION DISCLAIMER".
 3) WEIGHT: 18.82 LB

ITEM	QTY	U/M	PART NUMBER	DESCRIPTION
3	4	EACH	WFA12000	WASHER, FLAT, 12mm, 8.8, PLT
2	1	EACH	PUL83003	PULLEY, CRANK, ISC, 8.3L, 2B/X, 8" DIA
1	4	EACH	BTC12080	BOLT, HEX, 12 x 1.75 x 80mm, 10.9, PLT, FT

BILL OF MATERIALS

DRAWN	Jose Rodriguez	6/17/2009	
CHECKED	Val Jakowlew	6/17/2009	
REV	ECN	DESCRIPTION	DATE
		RELEASED TO PRODUCTION	6/17/2009
		DATE	6/17/2009
		BY	James Stewart
		DATE	6/17/2009
		BY	Ron Ingram
		DATE	6/17/2009
		BY	Dale Mason
		DATE	6/17/2009

TRANSARGTIC INC.

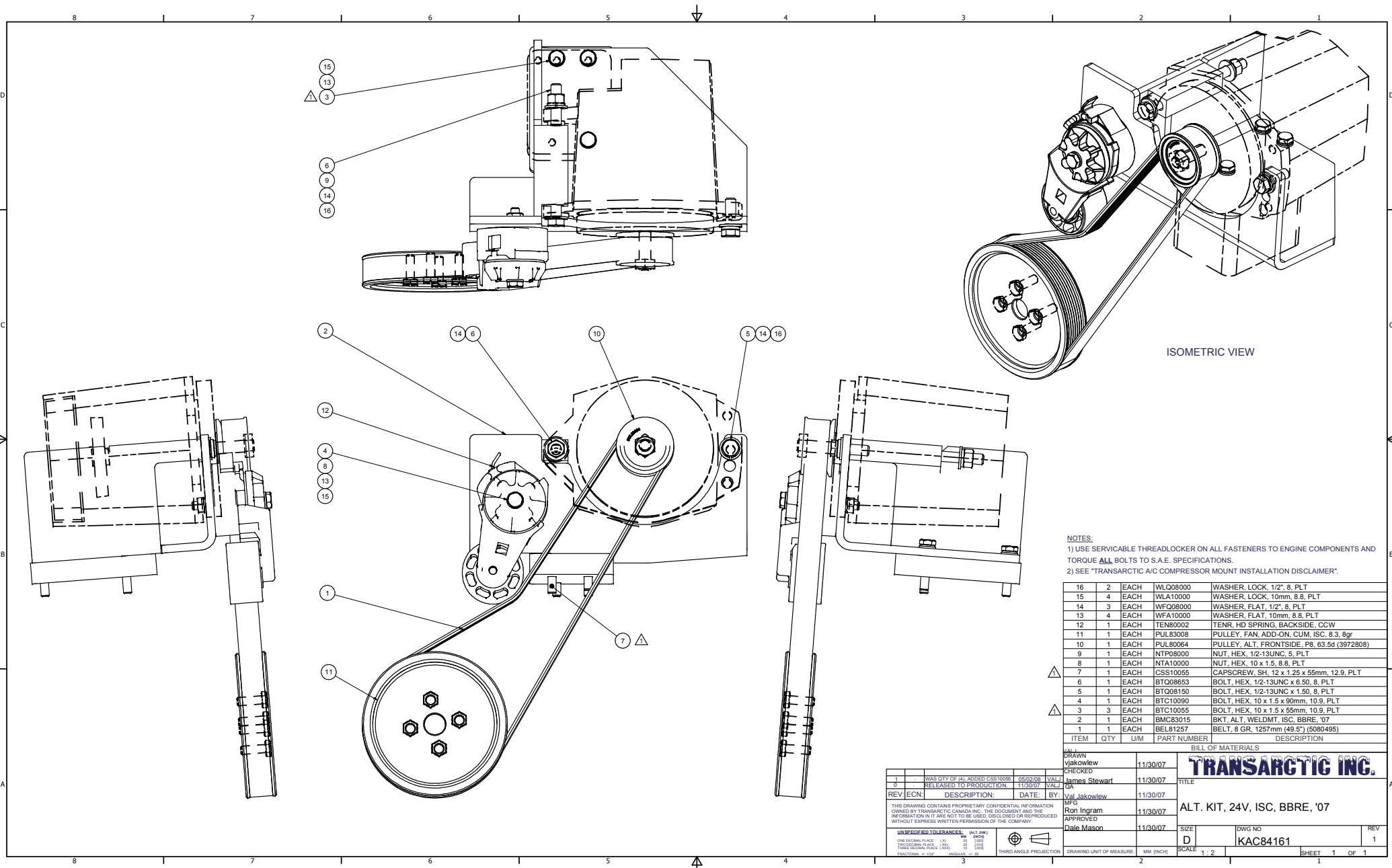
KIT, PULLEY, ISC, BBRE, '07

SIZE: D DWG NO: KPC84161 REV: 0

UNSPECIFIED TOLERANCES:	(ALL DIM)	GROUP
ONE DECIMAL PLACE (10)	25	FORM
TWO DECIMAL PLACE (20)	25	FORM
FRACTIONAL (1/32)	25	FORM
	ANGULAR	25



DRAWING UNIT OF MEASURE: MM (INCH) SCALE: 1:1 SHEET 1 OF 1



ISOMETRIC VIEW

NOTES:
 1) USE SERVICABLE THREADLOCKER ON ALL FASTENERS TO ENGINE COMPONENTS AND TORQUE ALL BOLTS TO S.A.E. SPECIFICATIONS.
 2) SEE "TRANSARGTIC A/C COMPRESSOR MOUNT INSTALLATION DISCLAIMER".

ITEM	QTY	UM	PART NUMBER	DESCRIPTION
16	2	EACH	WLG08000	WASHER, LOCK, 1/2", 8, PLT
15	4	EACH	WLA10000	WASHER, LOCK, 10mm, 8.8, PLT
14	3	EACH	WFG08000	WASHER, FLAT, 1/2", 8, PLT
13	4	EACH	WFA10000	WASHER, FLAT, 10mm, 8.8, PLT
12	1	EACH	TEN80002	TENR, HD SPRING, BACKSIDE, CCW
11	1	EACH	PUL83008	PULLEY, FAN, ADD-ON, CUM, ISC, 8.3, 8gr
10	1	EACH	PUL80064	PULLEY, ALT, FRONTSIDE, PB, 63.5d (3972808)
9	1	EACH	NTP08000	NUT, HEX, 1/2-13UNC, 5, PLT
8	1	EACH	NTA10000	NUT, HEX, 10 x 1.5, 8.8, PLT
7	1	EACH	CSS10055	CAPSCREW, SH, 12 x 1.25 x 55mm, 12.9, PLT
6	1	EACH	BT008653	BOLT, HEX, 1/2-13UNC x 6.50, 8, PLT
5	1	EACH	BT008150	BOLT, HEX, 1/2-13UNC x 1.50, 8, PLT
4	1	EACH	BT010090	BOLT, HEX, 10 x 1.5 x 90mm, 10.9, PLT
3	3	EACH	BT010055	BOLT, HEX, 10 x 1.5 x 55mm, 10.9, PLT
2	1	EACH	BMC83015	BKT, ALT, WELDMT, ISC, BBRE, '07
1	1	EACH	BEL81257	BELT, 8 GR, 1257mm (49.5") (5080495)

BILL OF MATERIALS			
DRAWN	11/30/07		
CHKD	11/30/07		
REV	DESCRIPTION	DATE	BY
1	WAS QTY OF (4) ADDED CSS10055	05/02/08	VAL
2	RELEASED TO PRODUCTION	11/30/07	VAL
3			OK
4			James Stewart
5			VAL
6			James Stewart
7			VAL
8			James Stewart
9			VAL
10			James Stewart
11			VAL
12			James Stewart
13			VAL
14			James Stewart
15			VAL
16			James Stewart

TRANSARGTIC INC.

ALT. KIT, 24V, ISC, BBRE, '07

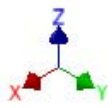
DATE: 11/30/07

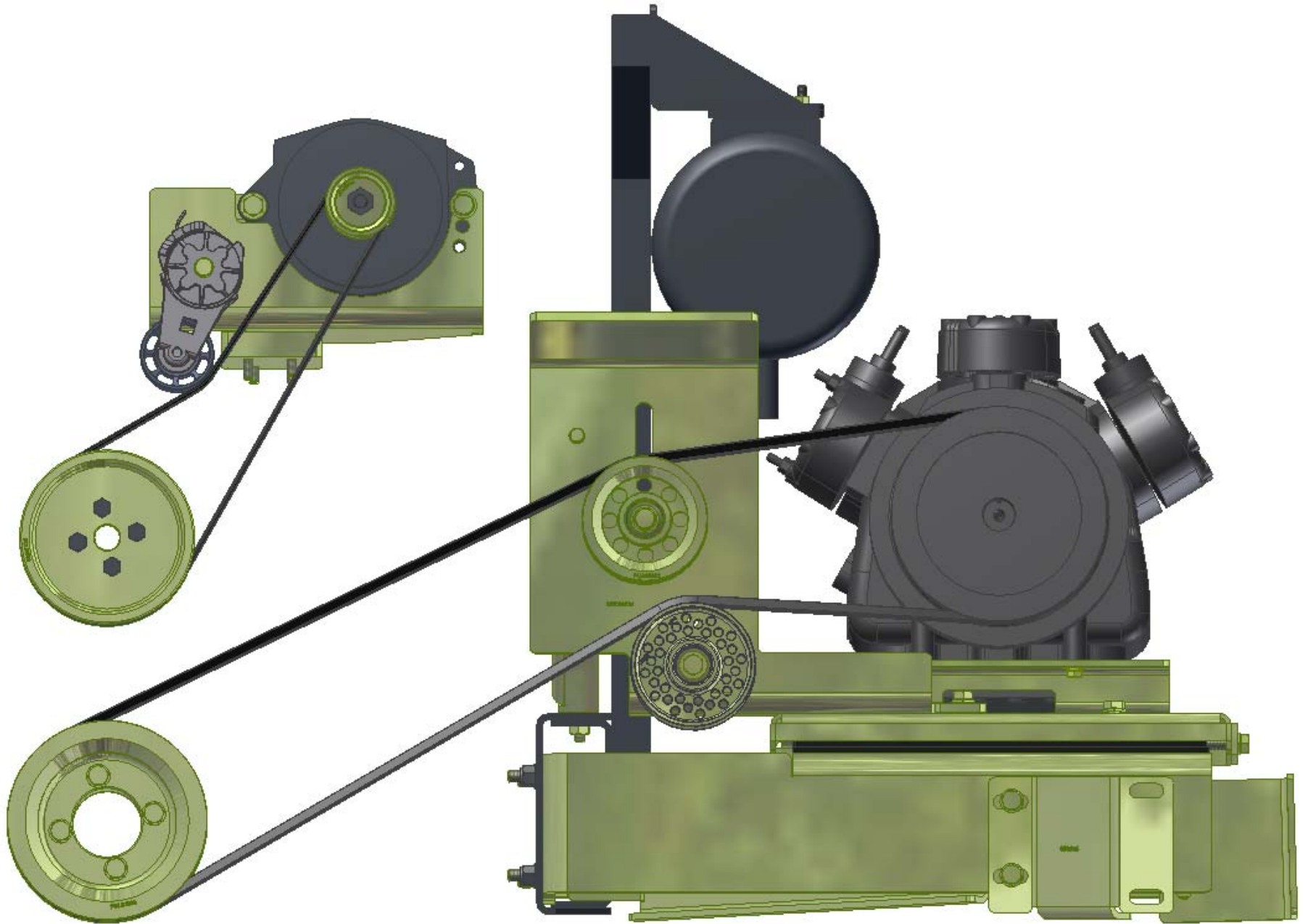
SCALE: 1:2

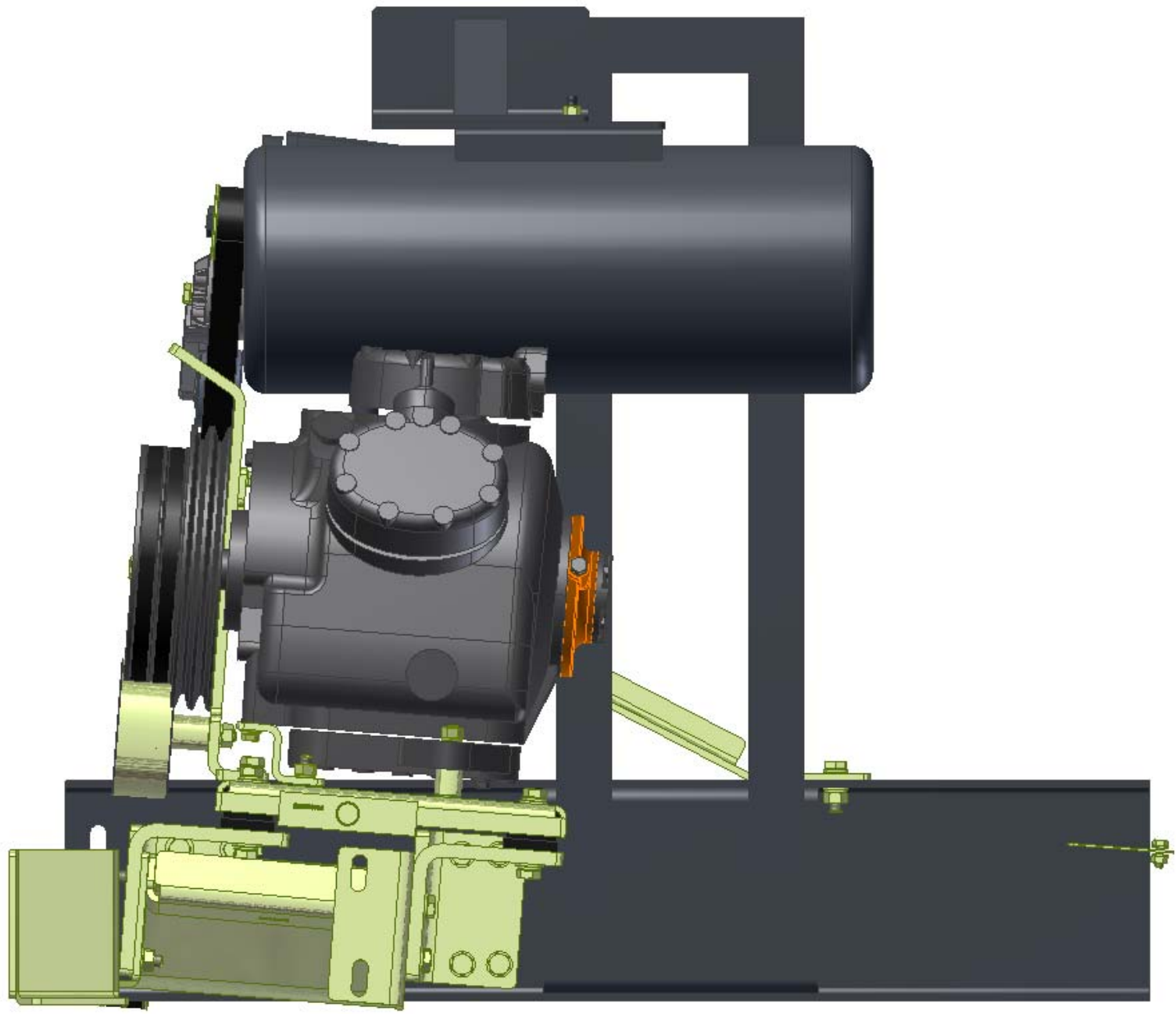
DWG NO: KAC84161

REV: 1

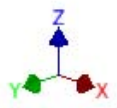
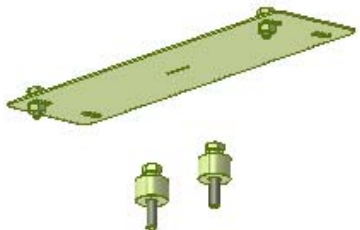
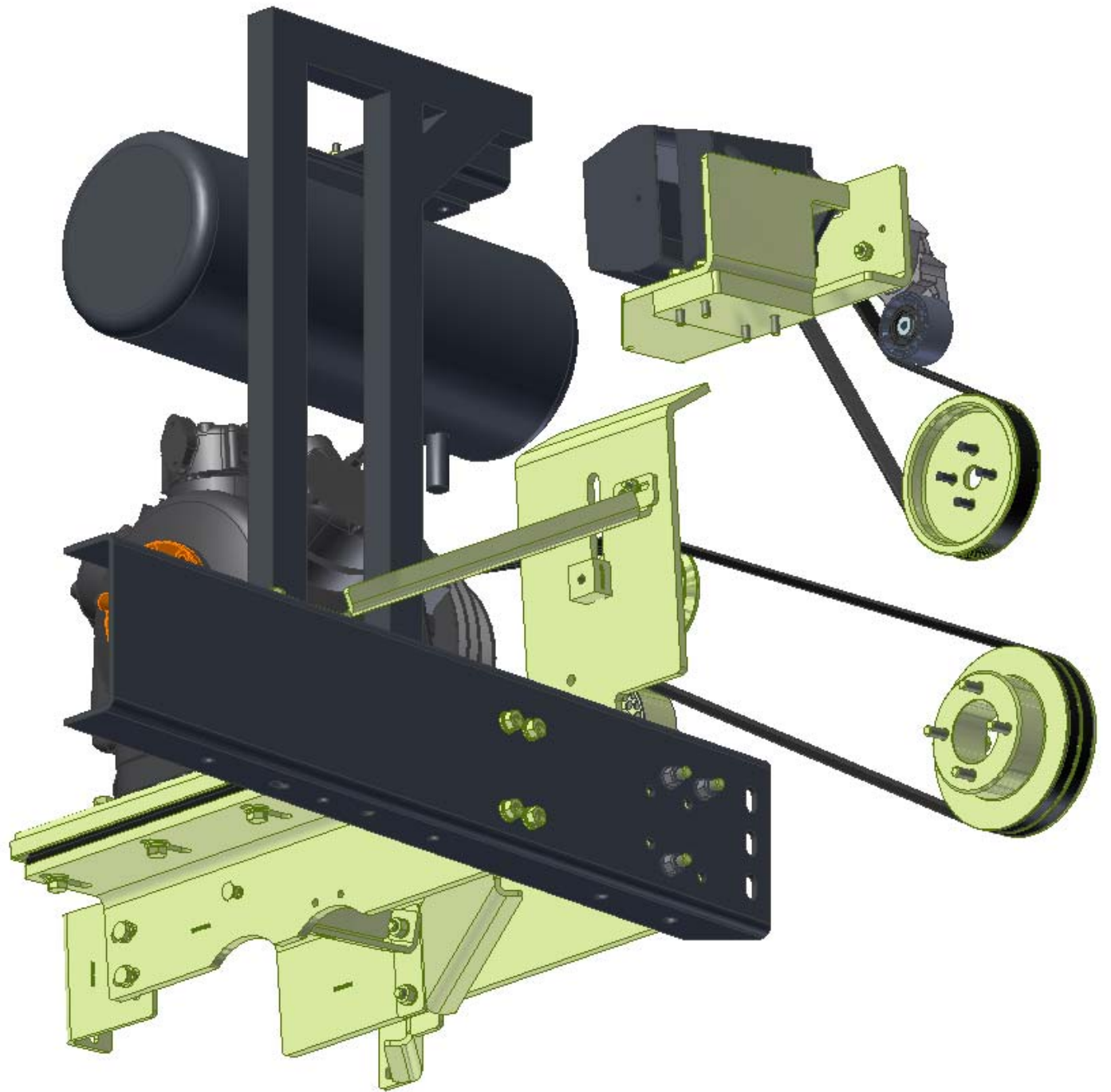
SHEET 1 OF 1











TransArctic A/C Compressor Mount Installation Disclaimer

All compressor mounts should be installed by qualified and trained personnel using proper tools and equipment in safe working conditions following industry standard guidelines for motor vehicle service and repair.

The installer of any compressor mount purchased from TransArctic must undertake all responsibility of issues arising from that compressor bracket being installed on any vehicle. As well as insure that a **proper and sufficient ground** is established between the compressors' clutches and the vehicle's engine. Mount functionality, operation and durability can all be compromised by an incompetent installation.

Due to the many different situations, parameters and application criteria, which are beyond the compressor mount manufacturer's control, TransArctic does not warrant design, durability, or operational functionality of any compressor mount improperly installed by another party.

With no implied guarantees it is the mount installer's strict responsibility to determine safety and functionality, of the compressor mount, at the time of installation.

Please contact TransArctic with any issue arising from installation so we may better improve the product. If you have any reservations about the compressor mount integrity contact TransArctic immediately at 1-877-COLD-AIR.

Mark OEM tensioner location

Install Kit

Check for Interferences

Check to ensure that the proper OEM tensioner orientation is maintained

Run engine with A/C system engaged for at least 10 minutes to run in belt

Check OEM tensioner orientation and adjust as required

Responsabilidad limitada de TransArctic en la instalación del soporte del compresor

Todos los soportes de los compresores deben ser instalados por personas calificadas y entrenadas, usando para ello los equipos y herramientas necesarios para esta labor en buenas condiciones y según las normas y guías para el servicio y/o reparación de motores de vehículos.

El instalador de los soportes comprados en TransArctic asume toda la responsabilidad de cualquier problema que surga en el soporte del compresor al vehículo; de igual manera es responsable que el cable a tierra sea conectado entre el embrague del compresor y el motor del vehículo.

Se advierte que el buen funcionamiento y la durabilidad del soporte pueden ser comprometidos por defectos en su instalación.

Debido a las diversas situaciones que se puedan presentar fuera del control del fabricante, TransArctic no garantiza el diseño, la durabilidad o el correcto funcionamiento de cualquier equipo inapropiadamente instalado por terceros.

Esta sobreentendido que el Instalador del montaje del compresor es estrictamente responsable de la seguridad y funcionamiento del equipo en el momento de la instalación.

Si tuviera algún problema o duda acerca de la instalación del soporte del compresor pongase en contacto inmediatamente con TransArctic al teléfono 1-877-COLD-AIR de modo que podamos mejorar nuestro producto.

Note la ubicación del medidor de tensión OEM

Instale el equipo

Controlar si hay interferencias.

Asegure que el medidor de tensión mantenga la orientación justa.

Encienda el motor por lo menos 10 minutos con el sistema A/C enganchado para que la correa corra

Controle la orientación justa del medidor de tensión y ajuste a las condiciones requeridas del fabricante