

Bill of Materials Listing

TransArctic Canada Inc.

12/3/2021
Page 1 of 1

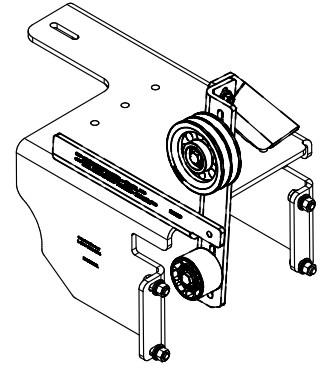
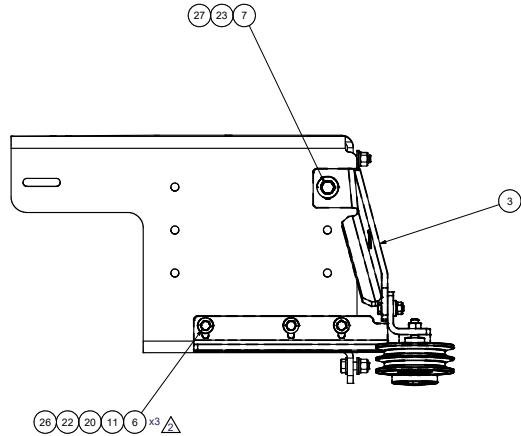
Product Number	Date	Description		Uof M	Weight	Yield			
Line	Qty	Component	Prod#	Rev#	Description	Bin	Unit	Weight	Yield
KFB67001			8/20/2012	2	Kit, Found'n, BB T3/D3RE, ISB, '13			209.73	0
10	1	BFB00001			2 Bkt, Foundation, Main, BB T3/D3RE, '13		each		
20	1	BMZ01083			0 Bkt, FRT, Weldmt, Angle, BB, T3RE, '22		each		
25	1	BMZ01086			0 Bkt, Diag, Brace, BB, T3RE, '22		each		
28	1	PUA05012			0 Pulley, Assy, Idler,B/BX gr,5", STL,Plt		each		
30	1	PUL80074			Pulley, Idler, B/S, Wide, 74d (89102)		each		
40	1	SCD25412			0 Spacer, Col, Drl,25.4mm x 25.4o x 12.3i		each		
45	1	SCD21912			0 Spacer, Col, Drl,21.9mm x 25.4o x 12.3i		each		
50	2	SLV17012			0 Sleeve, Pulley, 16.9o x 22.23mm x 12.32i		each		
60	1	KBB90020			1 Bag Kit, Fasteners, KFB67001		each		

Bill of Materials Listing

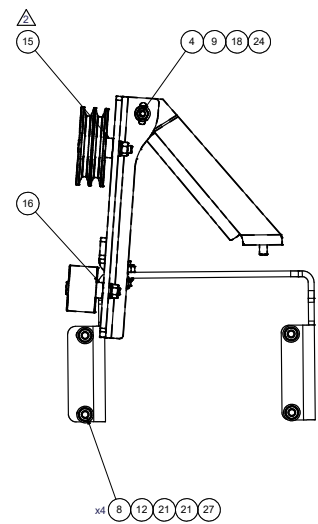
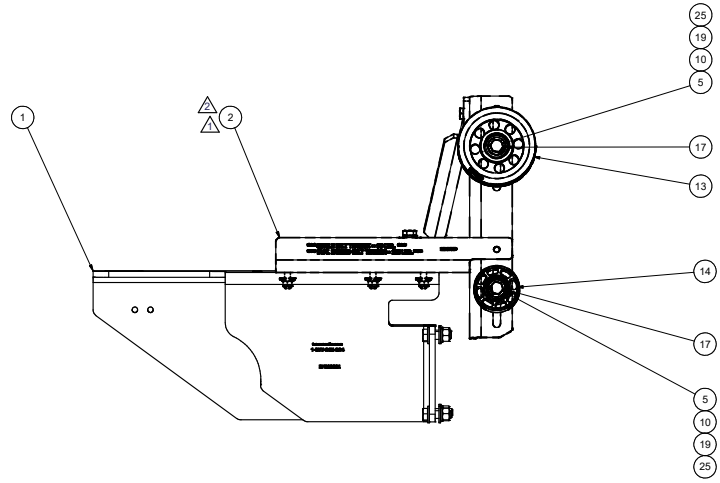
TransArctic Canada Inc.

12/3/2021
Page 1 of 1

Product Number	Date	Description	Uof M	Weight	Yield	
Line	Qty	Component Prod#	Rev#	Bin	Unit	
KBB90020	8/20/2012	1 Bag Kit, Fasteners, KFB67001			1.84	0
5	1	BTC10035			each	
10	2	BTC12080			each	
20	3	BTQ06150			each	
23	1	BTQ08126			each	
25	4	BTQ08150			each	
30	2	NTA12000			each	
35	1	NTA10000			each	
40	3	NTP06000			each	
45	4	NTQ08000			each	
50	2	WFA12000			each	
55	1	WFA10002			each	
60	3	WFN06000			each	
65	8	WFQ08000			each	
67	3	WFS06004			each	
68	1	WFS08001			each	
70	2	WLA12000			each	
75	1	WLA10000			each	
77	3	WLP06000			each	
80	1	WLQ06000			each	
90	5	WLQ08000			each	



ISOMETRIC VIEW



NOTES:
 1) USE SERVICABLE THREADLOCKER ON ALL FASTENERS TO ENGINE COMPONENTS AND TORQUE ALL BOLTS TO S.A.E. SPECIFICATIONS.
 2) SEE "TRANSARCTIC A/C COMPRESSOR MOUNT INSTALLATION DISCLAIMER".

27	5	EACH	WLO08000	WASHER, LOCK, 1/2", 8, PLT
26	3	EACH	WLP06000	WASHER, LOCK, 3/8", 5, PLT
25	2	EACH	WLA12000	WASHER, LOCK, 12mm, 8.8, PLT
24	1	EACH	WLA10000	WASHER, LOCK, 10mm, 8.8, PLT
23	1	EACH	WFS08001	WASHER, FLAT, 1/2", 8, USS, PLT
22	3	EACH	WFS06004	Washer, Flat, 3/8", Gr. 9, USS, PIT
21	8	EACH	WFO08000	WASHER, FLAT, 1/2", 8, PLT
20	3	EACH	WFO06000	WASHER, FLAT, 3/8", 2, PLT
19	2	EACH	WFA12000	WASHER, FLAT, 12mm, 8.8, PLT
18	1	EACH	WFA10002	WASHER, FLAT, 10mm, HWY, 8.8, PLT
17	2	EACH	SLV17012	SLEEVE, PULLEY, 16.9x x 22.23 mm x12.19l
16	1	EACH	SCD25412	SPACER, COL, DRL, 25.4mm x 25.4x x 12.3l
15	1	EACH	SCD21912	SPACER, COL, DRL, 21.9mm x 31.8x x 12.3l
14	1	EACH	PUL80074	PULLEY, IDLER, BACKSIDE, P8, 74D, 46.27W
13	1	EACH	PUA05012	PULLEY, ASSY, IDLER, B/BX gr, 5" STL, PLT
12	4	EACH	NTQ08000	NUT, HEX, 1/2-13UNC, 8, PLT
11	3	EACH	NTP06000	NUT, HEX, 3/8-16UNC, 5, PLT
10	2	EACH	NTA12000	NUT, HEX, 12 x 1.75, 8.8, PLT
9	1	EACH	NTA10000	NUT, HEX, 10 x 1.5, 8.8, PLT
8	4	EACH	BTQ08150	BOLT, HEX, 1/2-13UNC x 1.50, 8, PLT
7	1	EACH	BTQ08126	BOLT, HEX, 1/2-20UNC x 1.25, 8, PLT
6	3	EACH	BTQ06150	BOLT, HEX, 3/8-16UNC, 1.50", 8, PLT
5	4	EACH	BTC12080	BOLT, HEX, 12 x 1.75 x 80mm, 10.9, PLT, FT
4	1	EACH	BTC10035	BOLT, HEX, 10 x 1.5 x 35mm, 10.9, PLT
3	1	EACH	BMZ01086	BKT, DIAG, BRACE, BB, T3RE, '22
2	1	EACH	BMZ01083	BKT, FRT, ANGLE, WELDMT, BB, T3RE, '22
1	1	EACH	BFB00001	BKT, FOUNDATION, MAIN, BB D3RE, '13
ITEM	QTY	U/M	PART NUMBER	DESCRIPTION



REV	ECN	DESCRIPTION	DATE	BY
2		MADE FOR BMS1080 & PRINTS UPDATED	12/01/2021	JAL
1		REVIEWED FOR PRODUCTION	08/20/2012	JRR
0		RELEASED TO PRODUCTION	8/20/2012	JRR

CHECKED: Val Jakowlew 8/20/2012
 BY: James Stewart 8/20/2012
 APPROVED: Ron Ingram 8/20/2012
 Dale Mason 8/20/2012

UNSPECIFIED TOLERANCES: ALL DIMS
 ONE DECIMAL PLACE (X1) .10 INCH
 TWO DECIMAL PLACE (X2) .02 INCH
 THREE DECIMAL PLACE (X30) .005 INCH
 FRACTIONAL (X16) .00625 INCH

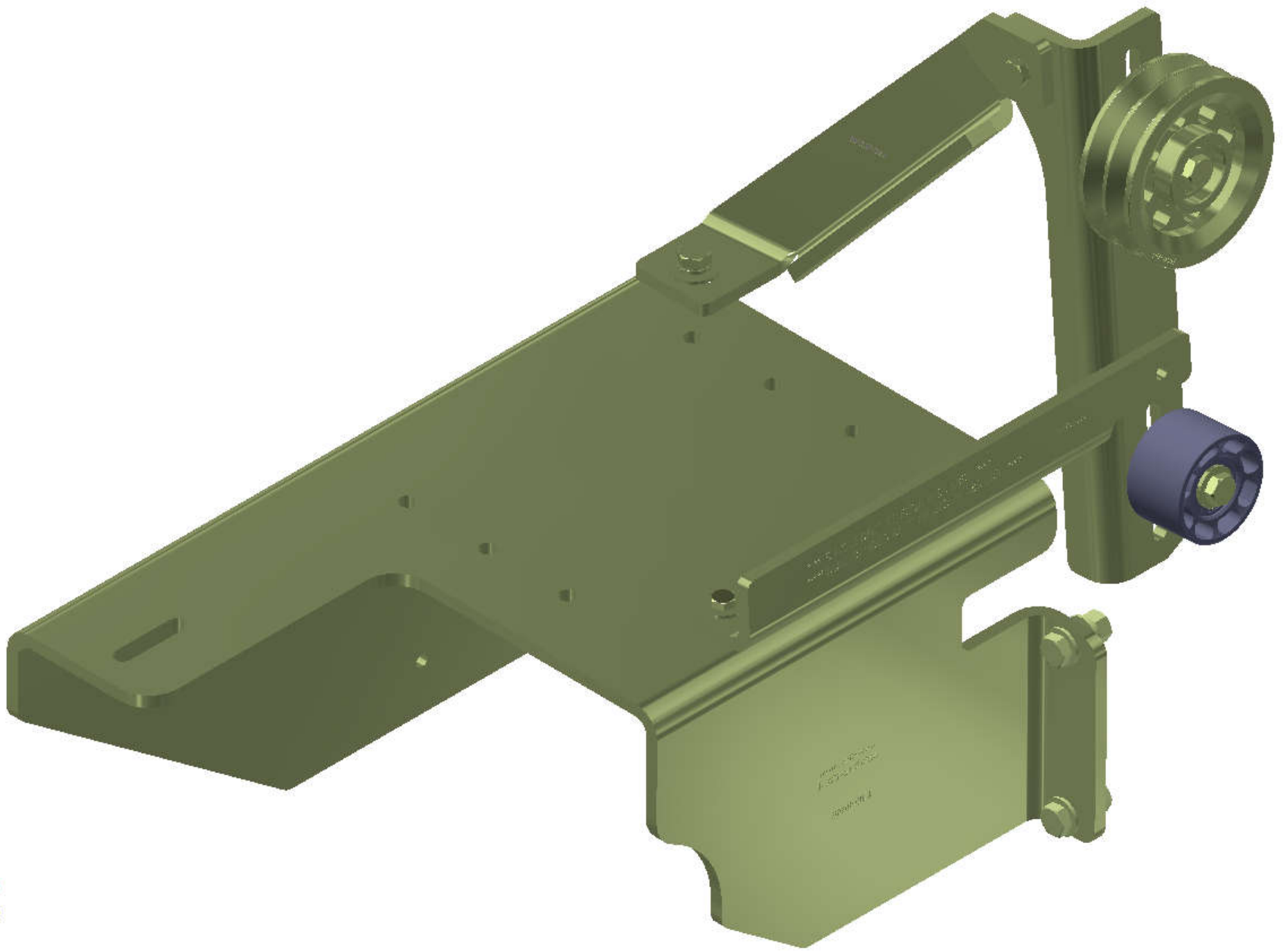
TRANSARCTIC INC.

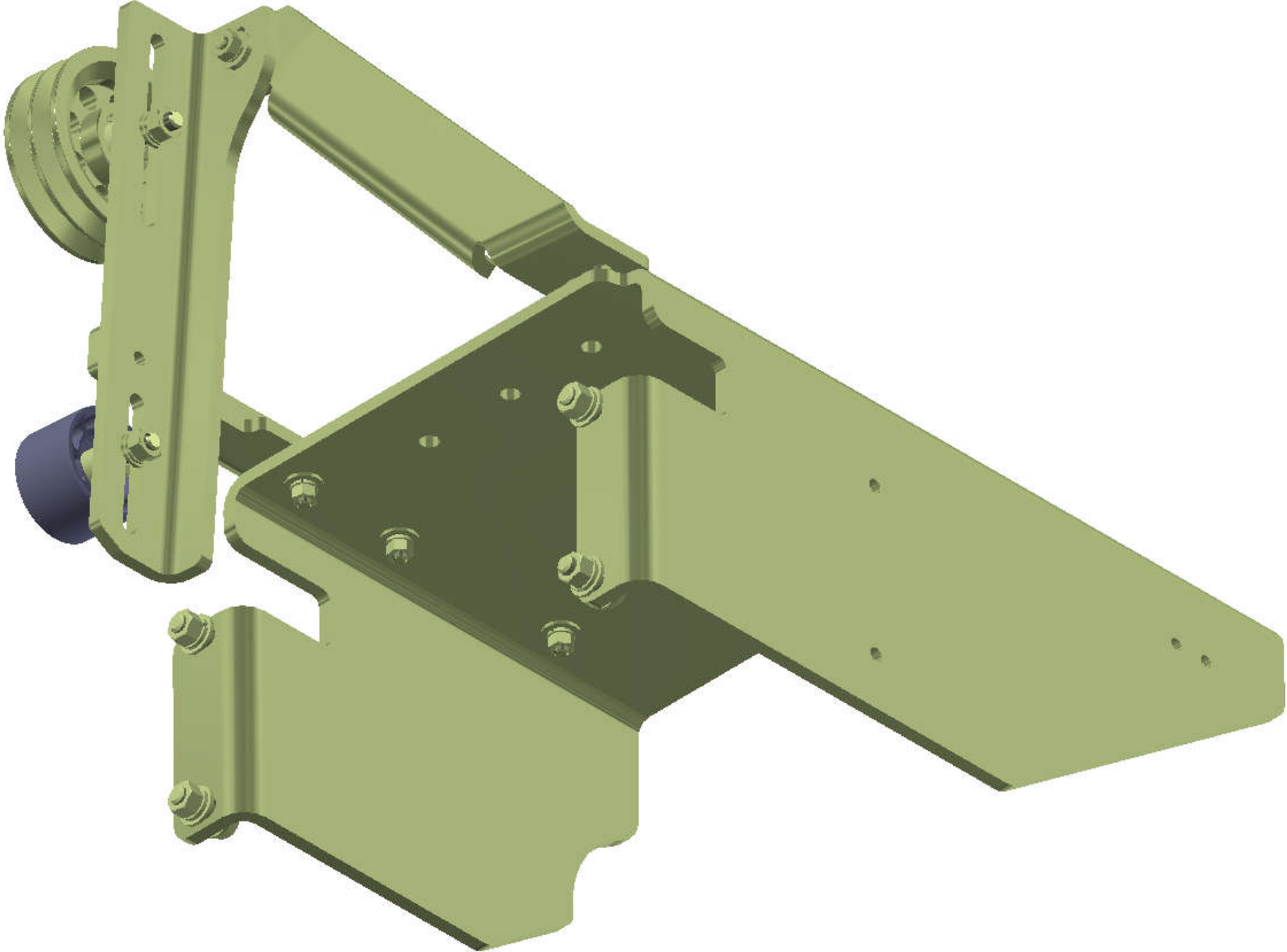
TITLE: KIT, FOUND'N, BB D3RE, ISB, '13

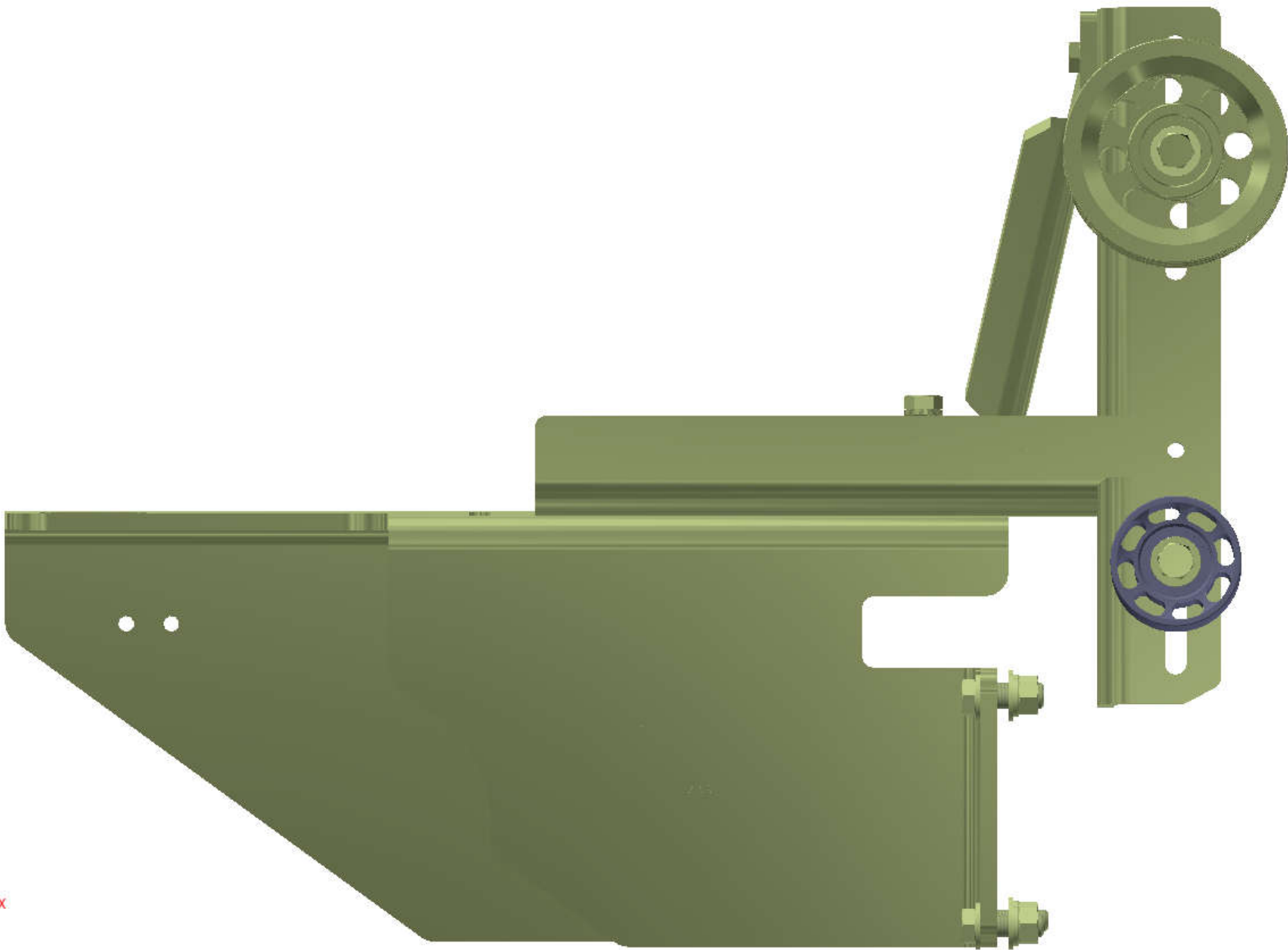
SIZE: DWG NO: KFB67001 REV: 2

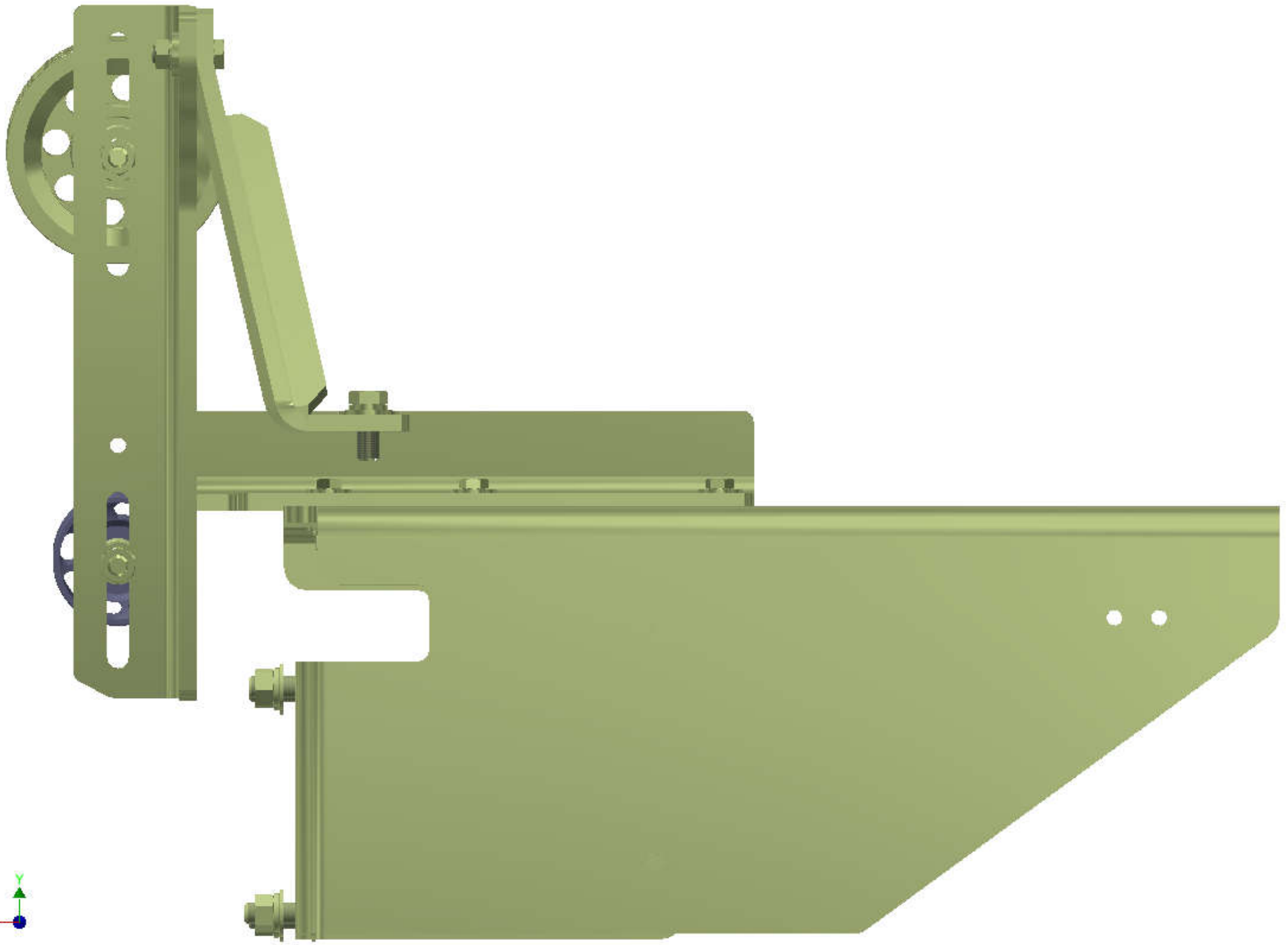
DRAWING UNIT OF MEASURE: MM (INCH) SCALE: 1:4 SHEET 1 OF 1

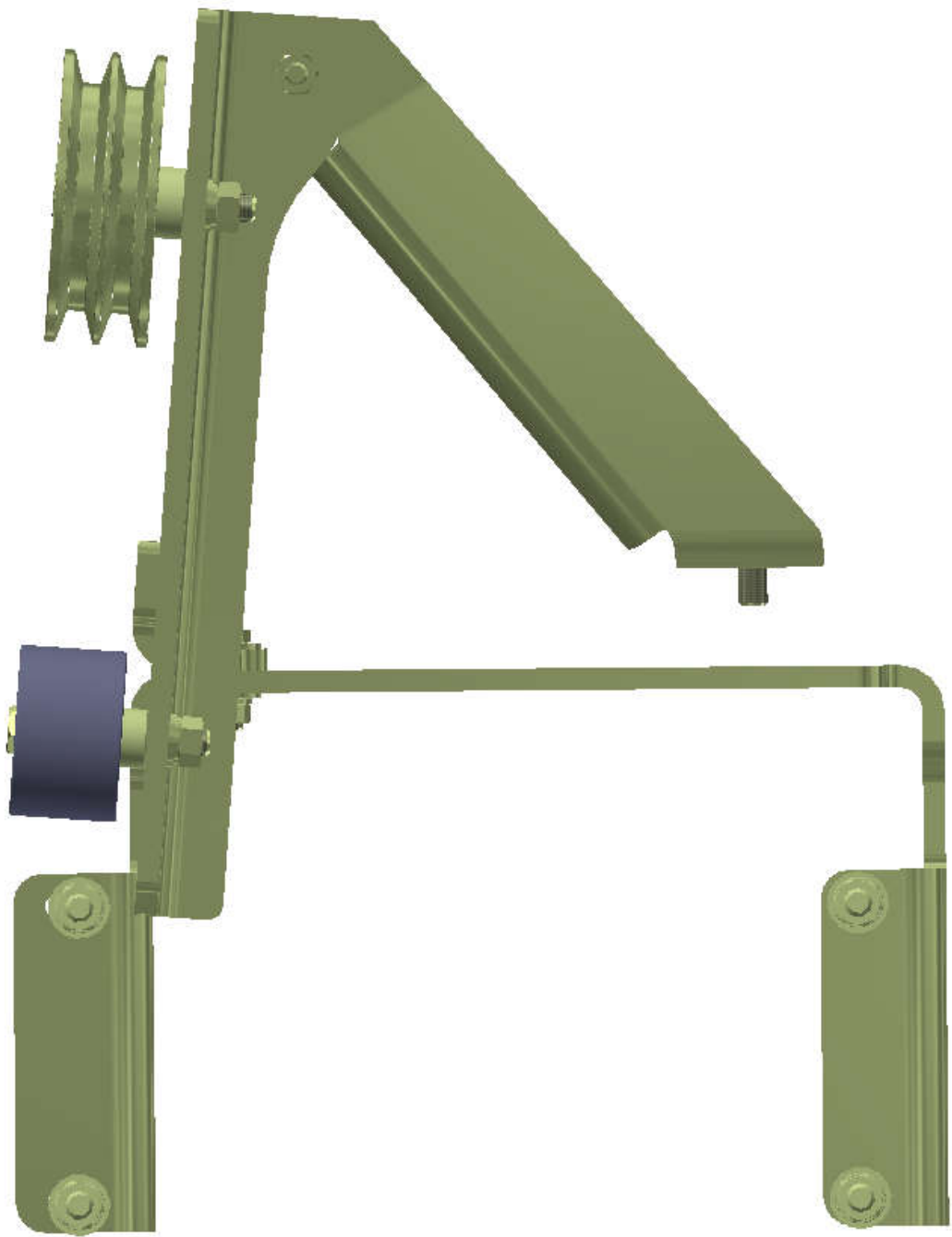


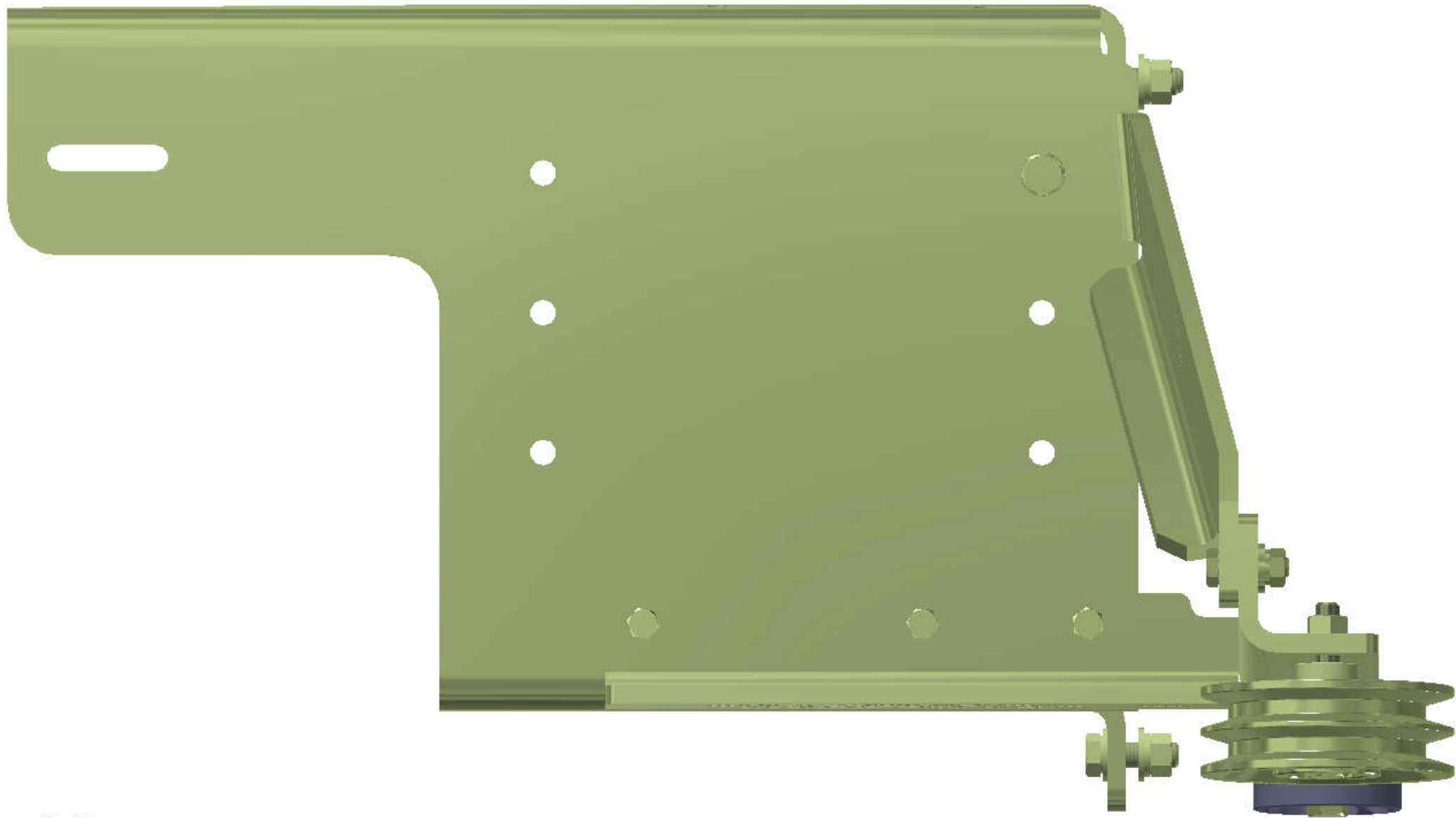












TransArctic A/C Compressor Mount Installation Disclaimer

All compressor mounts should be installed by qualified and trained personnel using proper tools and equipment in safe working conditions following industry standard guidelines for motor vehicle service and repair.

The installer of any compressor mount purchased from TransArctic must undertake all responsibility of issues arising from that compressor bracket being installed on any vehicle. As well as insure that a **proper and sufficient ground** is established between the compressors' clutches and the vehicle's engine. Mount functionality, operation and durability can all be compromised by an incompetent installation.

Due to the many different situations, parameters and application criteria, which are beyond the compressor mount manufacturer's control, TransArctic does not warrant design, durability, or operational functionality of any compressor mount improperly installed by another party.

With no implied guarantees it is the mount installer's strict responsibility to determine safety and functionality, of the compressor mount, at the time of installation.

Please contact TransArctic with any issue arising from installation so we may better improve the product. If you have any reservations about the compressor mount integrity contact TransArctic immediately at 1-877-COLD-AIR.

Mark OEM tensioner location

Install Kit

Check for Interferences

Check to ensure that the proper OEM tensioner orientation is maintained

Run engine with A/C system engaged for at least 10 minutes to run in belt

Check OEM tensioner orientation and adjust as required

Responsabilidad limitada de TransArctic en la instalación del soporte del compresor

Todos los soportes de los compresores deben ser instalados por personas calificadas y entrenadas, usando para ello los equipos y herramientas necesarios para esta labor en buenas condiciones y según las normas y guías para el servicio y/o reparación de motores de vehículos.

El instalador de los soportes comprados en TransArctic asume toda la responsabilidad de cualquier problema que surja en el soporte del compresor al vehículo; de igual manera es responsable que el cable a tierra sea conectado entre el embrague del compresor y el motor del vehículo.

Se advierte que el buen funcionamiento y la durabilidad del soporte pueden ser comprometidos por defectos en su instalación.

Debido a las diversas situaciones que se puedan presentar fuera del control del fabricante, TransArctic no garantiza el diseño, la durabilidad o el correcto funcionamiento de cualquier equipo inapropiadamente instalado por terceros.

Esta sobreentendido que el Instalador del montaje del compresor es estrictamente responsable de la seguridad y funcionamiento del equipo en el momento de la instalación.

Si tuviera algún problema o duda acerca de la instalación del soporte del compresor pongase en contacto inmediatamente con TransArctic al teléfono 1-877-COLD-AIR de modo que podamos mejorar nuestro producto.

Note la ubicación del medidor de tensión OEM

Instale el equipo

Controlar si hay interferencias.

Asegurese que el medidor de tensión mantenga la orientación justa.

Encienda el motor por lo menos 10 minutos con el sistema A/C enganchado para que la correa corra

Controle la orientación justa del medidor de tensión y ajuste a las condiciones requeridas del fabricante