

Bill of Materials Listing

TransArctic Canada Inc.

1/13/2022
Page 1 of 1

Product Number	Date	Description	Uof M	Weight	Yield	
Line	Qty	Component Prod#	Rev#	Bin	Unit	
KMC62730	6/22/2020	5 Mt. Kit, ISB13, TM43, Elec., IC CE, '20			132.78	0
5	1	PAC23150			each	
10	1	BEL82108			each	
20	1	BMC67063		2	Bkt, Alt, Bar, ISB, F400, BBCV, '10	each
30	1	BMC67115		0	Bkt, Shroud, TM43/31, 6.7L, IC., Conv.'13	each
40	1	BMC67120		2	Bkt, Rad sprt. TM43/21, 6.7L. IC. Conv.'13	each
50	1	BMC67171		6	Bkt, Main, Weldm't, IC. Conv., '20	each
60	1	BMC67194		1	Bkt, Brace, Weldm't, Diag, IC. Conv, '20	each
70	1	BMC67200		0	Bkt, Brace, Rear, TM-43, '20	each
80	3	CLP02625			Clamp, Constant Torque, 1 3/4"- 2 5/8"	each
90	1	CLP03125			Clamp, Constant Torque, 2 1/4"- 3 1/8"	each
95	1	FSP61906		0	Spacer, Fan, Pulley, IC, 19.05mm (.75")	each
100	1	PUL67008		0	Pulley, Crank, ADD-ON, Cum, ISB, 6.7, P8	each
110	1	PUL80076			Pulley, Idler, Backside, P8, 74d (89101)	each
120	2	PUL81074			Pulley, Idler, Frontside, P8, 74d (89103)	each
135	1	SCD17917		2	Spacer, Step, Drl, 17.9mm x38.1o x17.06i	each
140	3	SLV17010		1	Sleeve, Pulley, 16.9o x 22.23mm x 10.32i	each
150	1	TEN80003			Tenr, HD Spring, BackSide, CCW (89200B)	each
160	1	TUS01894		0	Tube, Stl, Rad, 1.75" O.D, C&W, 15"Lg, '21	each
170	1	KBC62730		5	Bag Kit, Fasteners, KMC62730 & KMC62732	each

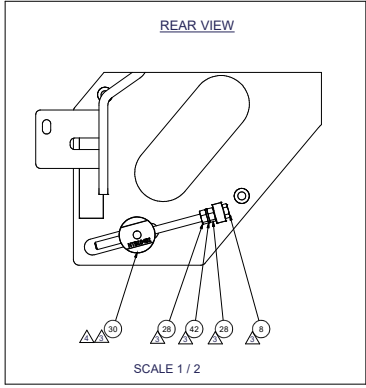
Bill of Materials Listing

TransArctic Canada Inc.

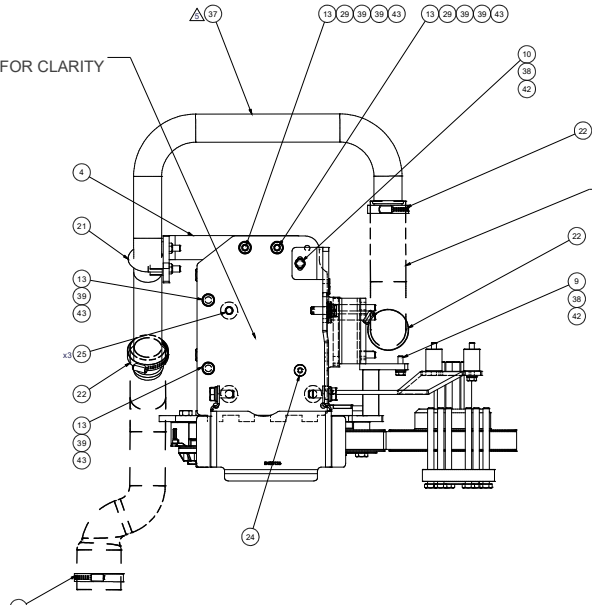
12/24/2021
Page 1 of 1

Product Number	Date	Description			Uof M	Weight	Yield	
Line	Qty	Component	Prod#	Rev#	Description	Bin	Unit	
KBC62730	6/26/2020	5			Bag Kit, Fasteners, KMC62730 & KMC62732		6.13	0
5	1	BTA08141			Bolt, Hex, 8 x 1.25 x 140mm, 8.8, Plt,FT		each	
10	5	BTC08025			Bolt, Hex, 8 x 1.25 x 25mm, 10.9, Plt		each	
20	1	BTC08035			Bolt, Hex, 8 x 1.25 x 35mm, 10.9, Plt,FT		each	
30	2	BTC08055			Bolt, Hex, 8 x 1.25 x 55mm, 10.9, Plt,FT		each	
40	4	BTC08100			Bolt, Hex, 8 x 1.25 x 100mm, 10.9, Plt		each	
50	4	BTC10035			Bolt, Hex, 10 x 1.5 x 35mm, 10.9, Plt,FT		each	
55	2	BTC10050			Bolt, Hex, 10 x 1.5 x 50mm, 10.9, Plt		each	
57	1	BTC10055			Bolt, Hex, 10 x 1.5 x 55mm, 10.9, Plt,FT		each	
60	4	BTC10070			Bolt, Hex, 10 x 1.5 x 70mm, 10.9, Plt		each	
70	1	BTC10090			Bolt, Hex, 10 x 1.5 x 90mm, 10.9, Plt		each	
80	6	BTC10120			Bolt, Hex, 10 x 1.5 x 120mm, 10.9, Plt		each	
90	2	BTC10150			Bolt, Hex, 10 x 1.5 x 150mm, 10.9, Plt		each	
100	6	BTC12030			Bolt, Hex, 12 x 1.75 x 30mm, 10.9, Plt		each	
110	1	BTS06176			Bolt, U, 3/8-16, 1.75" I.D, W, Nut/PLT.		Each	
120	1	CSF08031			Capscrew, FH, 8 x 1.25 x 30mm, 10.9,Plt		each	
140	3	CSF12036			Capscrew, FH, 12 x 1.75 x 35mm, 10.9,Plt		each	
145	6	CSS12090			Capscrew, SH, 12 x 1.25 x 90mm, 12.9,BLK		each	
147	2	NTA08000			Nut, Hex, 8 x 1.25, 8.8, Plt		each	
150	2	NTA10000			Nut, Hex, 10 x 1.5, 8.8, Plt		each	
155	1	NTS10401			1 Nut, Tensioner, 10mm, 40.1mm o/a, Plt		each	
160	12	WFA08000			Washer, Flat, 8mm, 8.8, Plt		each	
170	15	WFA10000			Washer, Flat, 10mm, 8.8, Plt		each	
180	6	WFA12000			Washer, Flat, 12mm, 8.8, Plt		each	
185	6	WFS12002			0 Washer, Flat, Hdn, 12mm, Stl, BLK		each	
190	13	WLA08000			Washer, Lock, 8mm, 8.8, Plt		each	
200	14	WLA10000			Washer, Lock, 10mm, 8.8, Plt		each	
210	6	WLA12000			Washer, Lock, 12mm, 8.8, Plt		each	

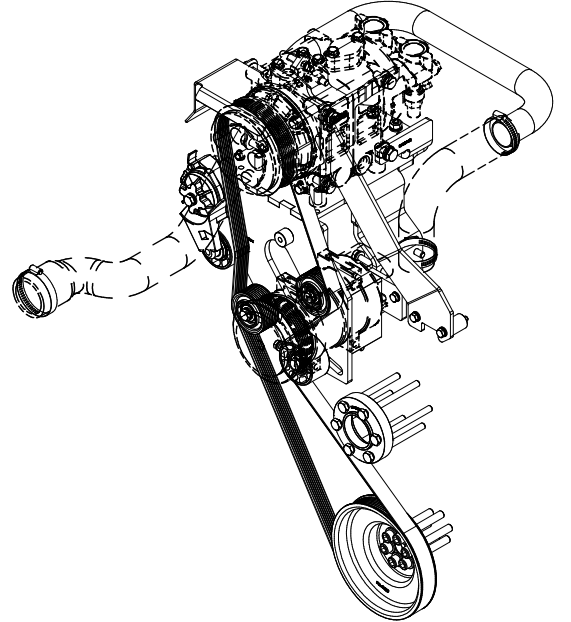
NOTE:
REMOVED COMPRESSOR FOR CLARITY



SCALE 1 / 2

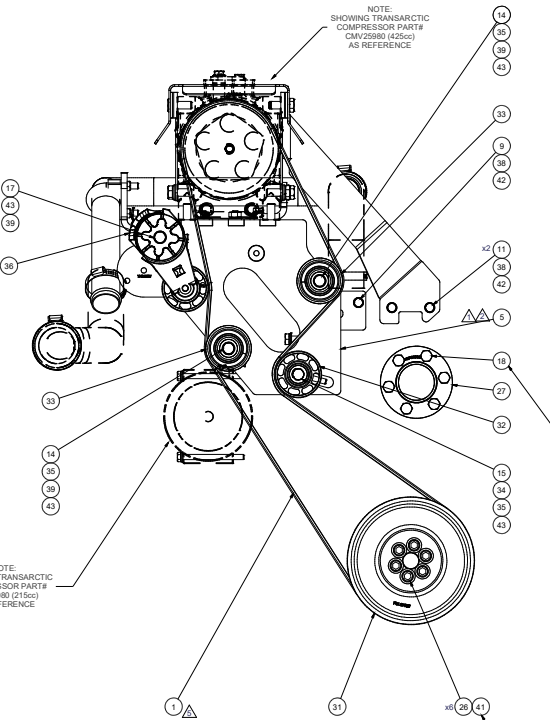
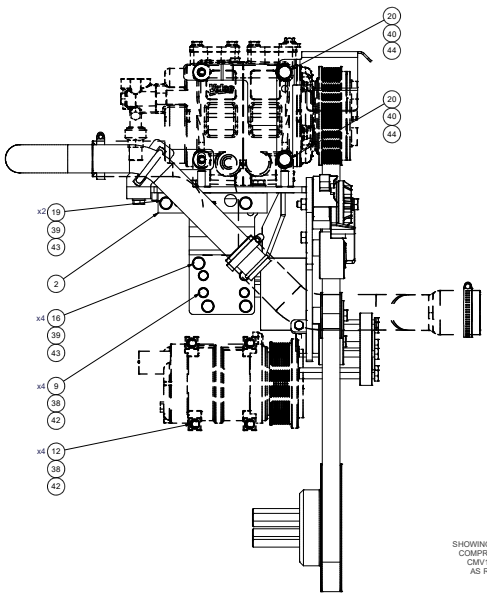


NOTE:
REMOVE EXISTING OEM. RAD HOSE AND
CUT TO LENGTH TO SUIT BOTH ENDS OF TUBE (TU801892)
HOSE MUST BE RE-INSTALLED NO LESS THAN 2"
ONTO TUBE. (BOTH ENDS).



ISOMETRIC VIEW

NOTE:
SHOWING TRANSARC TIC COMPRESSOR PART#
CMV25986 (42003)
AS REFERENCE



NOTE: USE EXISTING WASHERS

NOTE:
SHOWING TRANSARC TIC COMPRESSOR PART#
CMV1380 (21561)
AS REFERENCE

NOTE:
LOCK WASHERS ARE NOT REQUIRED.
TORQUE BOLTS TO S.A.E. SPECIFICATIONS.

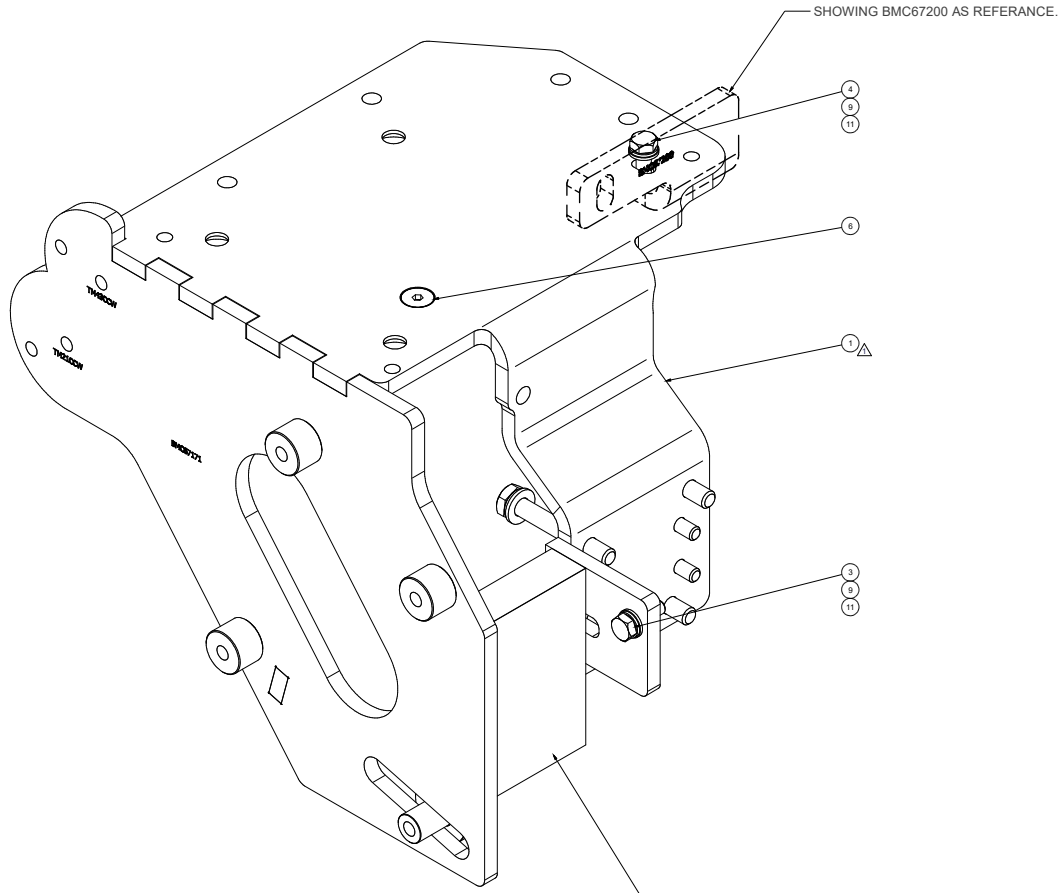
NOTES:
1) USE SERVICABLE THREADLOCKER ON ALL FASTENERS TO ENGINE COMPONENTS AND
TORQUE ALL BOLTS TO S.A.E. SPECIFICATIONS.
2) USE TRANSARC TIC COMPRESSOR PART# CMV25986 (42003) AS REFERENCE.
3) REMOVE ALTERNATOR, MOUNT CASTING AND LIFTING LUG & REPLACE THE LIFT LUG
WITH ITEM # BMC87171 AND RE-INSTALL ALTERNATOR AND MOUNT CASTING.
REFER TO INSTALLATION PROCEDURE.

ITEM	QTY	U/M	PART NUMBER	DESCRIPTION
44	6	EACH	WLA12000	WASHER LOCK, 12mm, 8.8, PLT
43	14	EACH	WLA10000	WASHER LOCK, 10mm, 8.8, PLT
42	13	EACH	WLA68000	WASHER LOCK, 6mm, 8.8, PLT
41	6	EACH	WFS12002	WASHER FLAT, HDN, 12mm, STL, BLK
40	6	EACH	WFA10000	WASHER FLAT, 10mm, 8.8, PLT
39	15	EACH	WFA10000	WASHER FLAT, 10mm, 8.8, PLT
38	12	EACH	WFA68000	WASHER FLAT, 6mm, 8.8, PLT
37	1	EACH	TU801894	TUBE, STL, RAD, 1.75" O.D., CAW, 15" LONG, 21
36	1	EACH	TEN80003	TENR, HD SPRNG, BACKSIDE, C/W
35	3	EACH	SLV17010	SLEEVE, PULLEY, 16.8x 22.23mm x 10.30
34	1	EACH	SGD17917	SPACER, STEP, DRL, 17.9mm x 28.6x 171
33	2	EACH	PUL161074	PULLEY IDLER, FRONTSIDE, PB, 54x 39x
32	1	EACH	PUL160708	PULLEY IDLER, BACKSIDE, PB, 760, 39W
31	1	EACH	PUL167009	PULLEY CRANK, ADD-ON, CUM, ISB, 8.7, PB
30	1	EACH	NT121001	NUT, TENSIONER, 10 mm ID, 13 mm dia, PLT
29	2	EACH	NTA10000	NUT, HEX, 10 x 1.5, 8.8, PLT
28	2	EACH	NTA68000	NUT, HEX, 8 x 1.25, 8.8, PLT
27	1	EACH	FSP81908	SPACER, FAN PULLEY, C/ISB, 19.65mm (7/8")
26	6	EACH	CSS12090	CAPSCREW, SH, 12 x 1.25 x 90mm, 12.9, PLT
25	3	EACH	CSF12038	CAPSCREW, FH, 12 x 1.75 x 35mm, 10.9, PLT
24	1	EACH	CSF08031	CAPSCREW, FH, 8 x 1.25 x 30mm, 10.9, PLT
23	1	EACH	CLP03125	CLAMP, CONSTANT TORQUE, 2 1/4" - 3 1/8"
22	3	EACH	CLP02825	CLAMP, CONSTANT TORQUE, 1 3/4" - 2 5/8"
21	1	EACH	BT58176	BOL U, SH, 16, 1.75, 1.0, W, NUT, PLT
20	6	EACH	BTC10030	BOLT, HEX, 12 x 1.5 x 30mm, 10.9, PLT
19	2	EACH	BTC10150	BOLT, HEX, 10 x 1.5 x 150mm, 10.9, PLT
18	8	EACH	BTC10120	BOLT, HEX, 10 x 1.5 x 120mm, 10.9, PLT
17	1	EACH	BTC10090	BOLT, HEX, 10 x 1.5 x 90mm, 10.9, PLT
16	4	EACH	BTC10070	BOLT, HEX, 10 x 1.5 x 70mm, 10.9, PLT
15	1	EACH	BTC10055	BOLT, HEX, 10 x 1.5 x 55mm, 10.9, PLT
14	2	EACH	BTC10050	BOLT, HEX, 10 x 1.5 x 50mm, 10.9, PLT
13	4	EACH	BTC10035	BOLT, HEX, 10 x 1.5 x 35mm, 10.9, PLT
12	4	EACH	BTC08100	BOLT, HEX, 8 x 1.25 x 100mm, 10.9, PLT
11	2	EACH	BTC08055	BOLT, HEX, 8 x 1.25 x 55mm, 10.9, PLT
10	1	EACH	BTC08035	BOLT, HEX, 8 x 1.25 x 35mm, 10.9, PLT
9	5	EACH	BTC08025	BOLT, HEX, 8 x 1.25 x 25mm, 10.9, PLT
8	1	EACH	BTA8141	BOLT, HEX, 8 x 1.25 x 140mm, 8.8, PLT, FT
7	1	EACH	BMC87200	BKT, BRACE, REAR, TM-43, 20
6	1	EACH	BMC87194	BKT, BRACE, WELDMT, DIAG, IC, 20
5	1	EACH	BMC87171	BKT, MARK, WELDMT, IC, CONV, 20
4	1	EACH	BMC87120	BKT, RAD SPRT, TM43/21, 6.7L, IC, CONV/13
3	1	EACH	BMC87115	BKT, SHROUD, TM43/31, 6.7L, IC, CONV/13
2	1	EACH	BMC87063	BKT, BKT, BARS, ISB, F400, B8CV, 10
1	1	EACH	BEL82108	BELT, 86, 2108mm (83")

REV	ECN	DESCRIPTION	DATE	BY
1				
2				
3				
4				
5				
6				
7				
8				
9				
10				
11				
12				
13				
14				
15				
16				
17				
18				
19				
20				
21				
22				
23				
24				
25				
26				
27				
28				
29				
30				
31				
32				
33				
34				
35				
36				
37				
38				
39				
40				
41				
42				
43				
44				
45				
46				
47				
48				
49				
50				
51				
52				
53				
54				
55				
56				
57				
58				
59				
60				
61				
62				
63				
64				
65				
66				
67				
68				
69				
70				
71				
72				
73				
74				
75				
76				
77				
78				
79				
80				
81				
82				
83				
84				
85				
86				
87				
88				
89				
90				
91				
92				
93				
94				
95				
96				
97				
98				
99				
100				

DRAWN: [Name] DATE: 3/22/2020
 CHECKED: [Name] DATE: 3/22/2020
 DESIGNED: [Name] DATE: 3/22/2020
 APPROVED: [Name] DATE: 3/22/2020
 DATE: 3/22/2020

TRANSARC TIC INC.
 MT. KIT, ISB13, TM-43, IC CE300, '20
 DWS NO: [Number]
 SIZE: [Number]
 E: [Number]
 SCALE: 1:3
 SHEET 1 OF 2

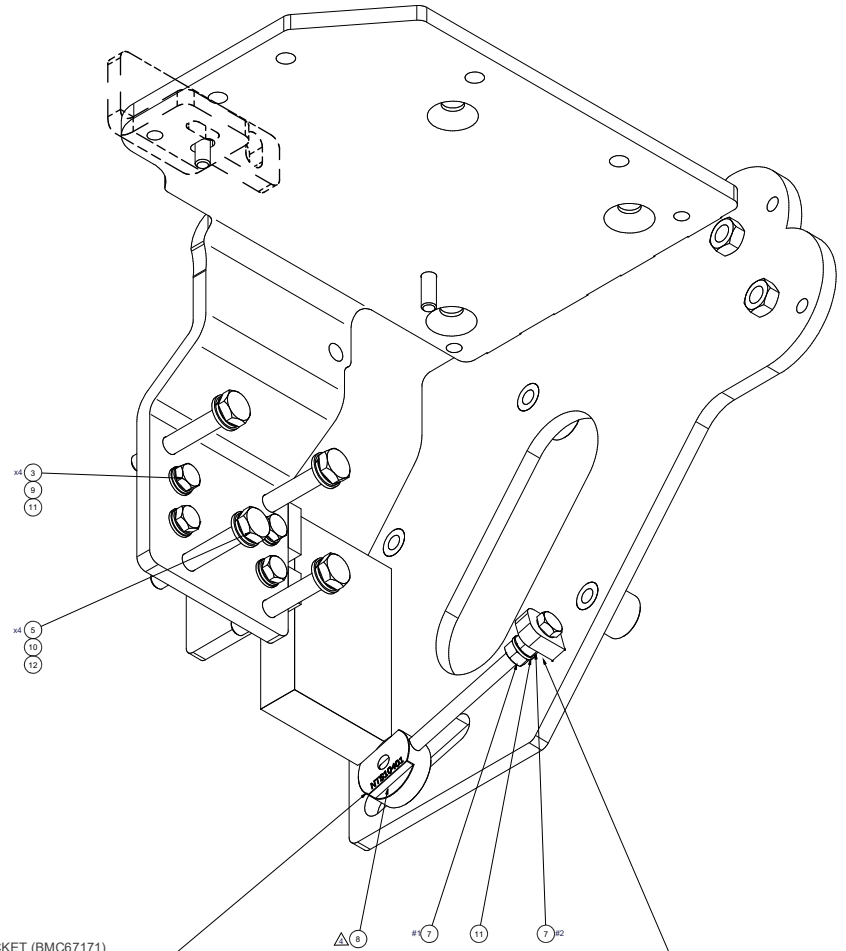


COMPRESSOR MOUNT BRACKET (BMC67171)
INSTALLATION PROCEDURE.

"NOTE: ALTERNATOR MOUNT CASTING AND LIFTING LUG NOT SHOW"

- 1) REMOVE ALTERNATOR CASTING AND LIFTING LUG.
- 2) INSTALL MOUNT BRACKET (BMC67110) WITH THE 8mm x 25mm BOLTS AND HARDWARE AS SHOWN. ITEMS (# 2, 10, 12). LEAVE HAND TIGHT FOR NOW.
- 3) INSTALL 8mm x 30mm BOLT AND HARDWARE INTO THE FRONT OF MOUNT AS SHOWN. ITEMS (# 3, 10, 12). ALSO LEAVING HAND TIGHT FOR NOW.
- 4) PLACE EXISTING ALTERNATOR MOUNT CASTING INTO POSITION USING THE 10mm x 70mm BOLTS AND HARDWARE. ITEMS (# 4, 11, 13).
- 5) HAND TIGHTEN THE 8mm COUNTERSUNK BOLT AND REAR 8MM BOLT IN THE TOP OF THE MOUNT FOR NOW. ITEMS (#6 & #3,10,12)
- 6) ONCE EVERYTHING IS ALIGNED, TIGHTEN THE 8mm X 30mm BOLT LOCATED IN THE FRONT OF THE MOUNT. THIS WILL SECURE THE MOUNT INTO THE CORRECT POSITION.
- 7) ONCE THE MOUNT HAS BEEN SECURED WITH THE FRONT BOLT. REMOVE THE ALTERNATOR CASTING AND TIGHEN THE 4 - 8mm x 25mm BOLTS.
- 8) TORQUE ALL 8mm BOLTS TO S.A.E. SPECIFICATIONS.
- 9) NOW THAT THE MOUNT IS SECURED INTO POSITION YOU CAN RE - INSTALL THE ALTERNATOR CASTING AND TIGHTEN AND TORQUE ALL REMAINING BOLTS.
- 10) NOW YOU CAN PROCEED TO INSTALL ALL REMAINING COMPONENTS.

***PRIOR TO INSTALLING THE MAIN BRACKET (BMC67171)
ONTO ENGINE, JACKSCREW NUT (NTS10401) AND LEADSCREW BTA08141
NEEDS TO BE INSTALLED ON MAIN BRACKET FIRST***



NOTE: DO NOT OVERTIGHTEN NUT #2 TO MAIN BRACKET TAB.
ONLY SNUG FIT REQUIRED, FOR BOLT TO SPIN FREELY WHEN ADJUSTING PULLEY.

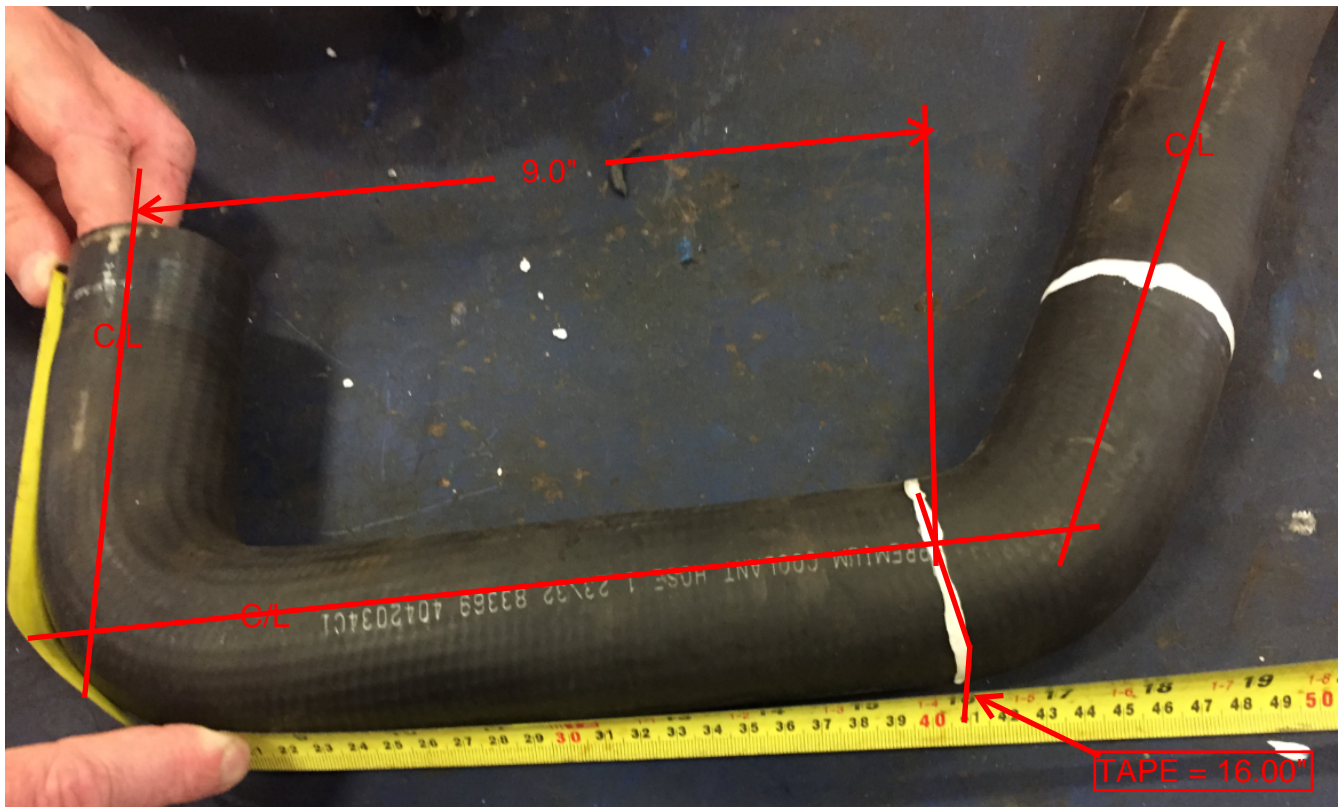
NOTES:
1) USE SERVICABLE THREADLOCKER ON ALL FASTENERS TO ENGINE COMPONENTS AND TORQUE ALL BOLTS TO S.A.E. SPECIFICATIONS.
2) SEE "SERVICABLE AC COMPRESSOR MOUNT INSTALLATION DISCLAIMER".
3) REMOVE ALTERNATOR MOUNT CASTING AND LIFTING LUG & REPLACE THE LEFT LUG WITH ITEM # BMC67171 AND RE - INSTALL ALTERNATOR AND MOUNT CASTING. REFER TO INSTALLATION PROCEDURE.

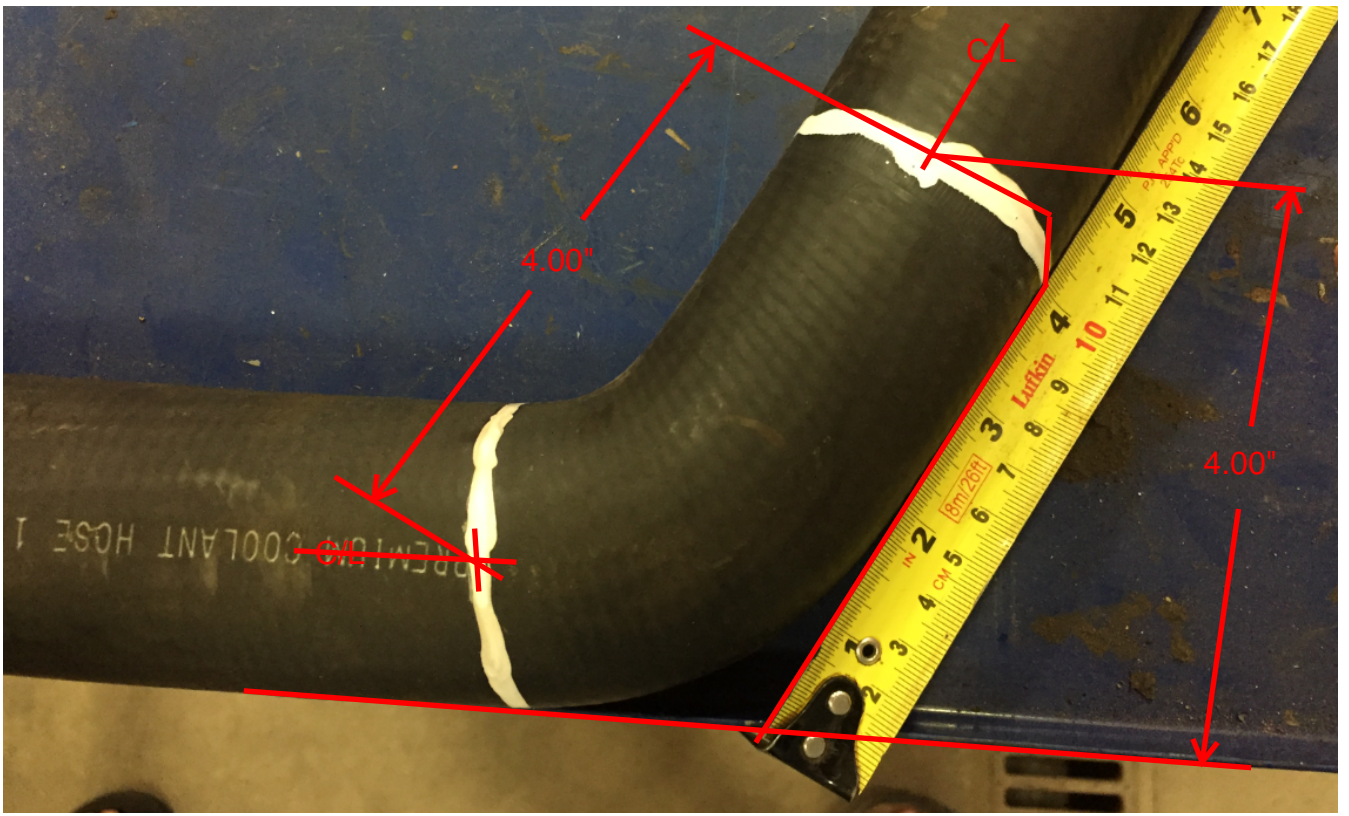
ITEM	QTY	U/M	PART NUMBER	DESCRIPTION
12	4	EACH	WLA10000	WASHER, LOCK, 10mm, 8.8, PLT
11	7	EACH	WLA06000	WASHER, LOCK, 8mm, 8.8, PLT
10	4	EACH	WFA10000	WASHER, FLAT, 10mm, 8.8, PLT
9	6	EACH	WFA08000	WASHER, FLAT, 8mm, 8.8, PLT
8	1	EACH	NTS10401	NUT, TENSIONER, 10 mm, 60.13 mm o/d, PLT
7	2	EACH	NTA80000	NUT, HEX, 8 x 1.25, 8.8 PLT
6	1	EACH	CSF08031	CAPSCREW, FH, 8 x 1.25 x 30mm, 10.9, PLT
5	4	EACH	BTC00070	BOLT, HEX, 10 x 1.5 x 20mm, 10.9, PLT
4	1	EACH	BTC08035	BOLT, HEX, 8 x 1.25 x 35mm, 10.9, PLT
3	5	EACH	BTC08025	BOLT, HEX, 8 x 1.25 x 25mm, 10.9, PLT
2	1	EACH	BTA08141	BOLT, HEX, 8 x 1.25 x 140mm, 8.8, PLT, FT
1	1	EACH	BMC67171	BKT, MAIN, WELDMT, IC, CONV, 20

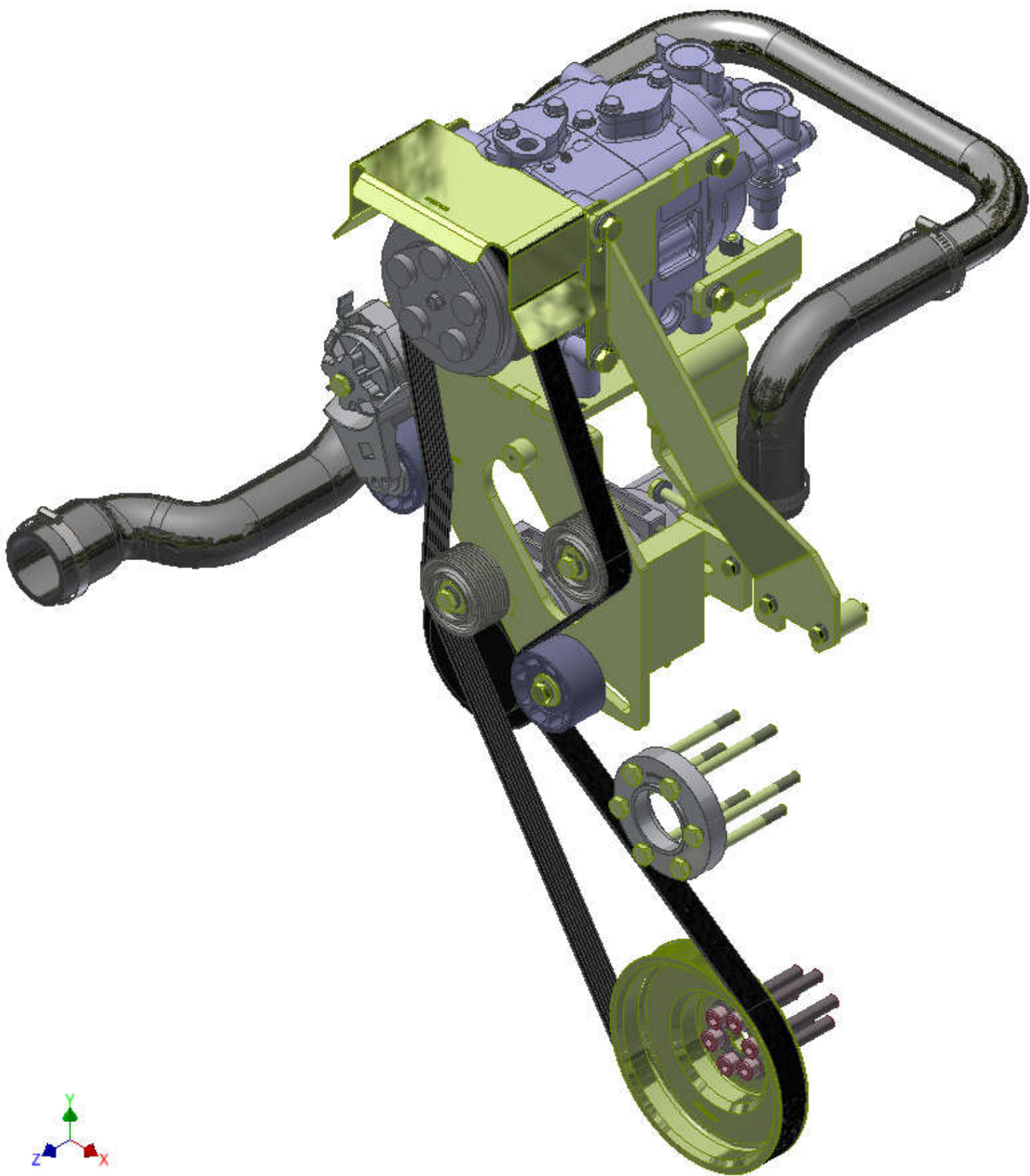
REV	ECN	DESCRIPTION	DATE	BY	DATE	BY
1		ISSUED FOR PRODUCTION	02/22/2020	James Stewart	02/22/2020	James Stewart
2		REVISED TO ADD HARDWARE	02/22/2020	James Stewart	02/22/2020	James Stewart
3		REVISED TO ADD HARDWARE	02/22/2020	James Stewart	02/22/2020	James Stewart
4		REVISED TO ADD HARDWARE	02/22/2020	James Stewart	02/22/2020	James Stewart
5		REVISED TO ADD HARDWARE	02/22/2020	James Stewart	02/22/2020	James Stewart
6		REVISED TO ADD HARDWARE	02/22/2020	James Stewart	02/22/2020	James Stewart
7		REVISED TO ADD HARDWARE	02/22/2020	James Stewart	02/22/2020	James Stewart
8		REVISED TO ADD HARDWARE	02/22/2020	James Stewart	02/22/2020	James Stewart
9		REVISED TO ADD HARDWARE	02/22/2020	James Stewart	02/22/2020	James Stewart
10		REVISED TO ADD HARDWARE	02/22/2020	James Stewart	02/22/2020	James Stewart

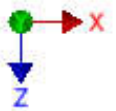
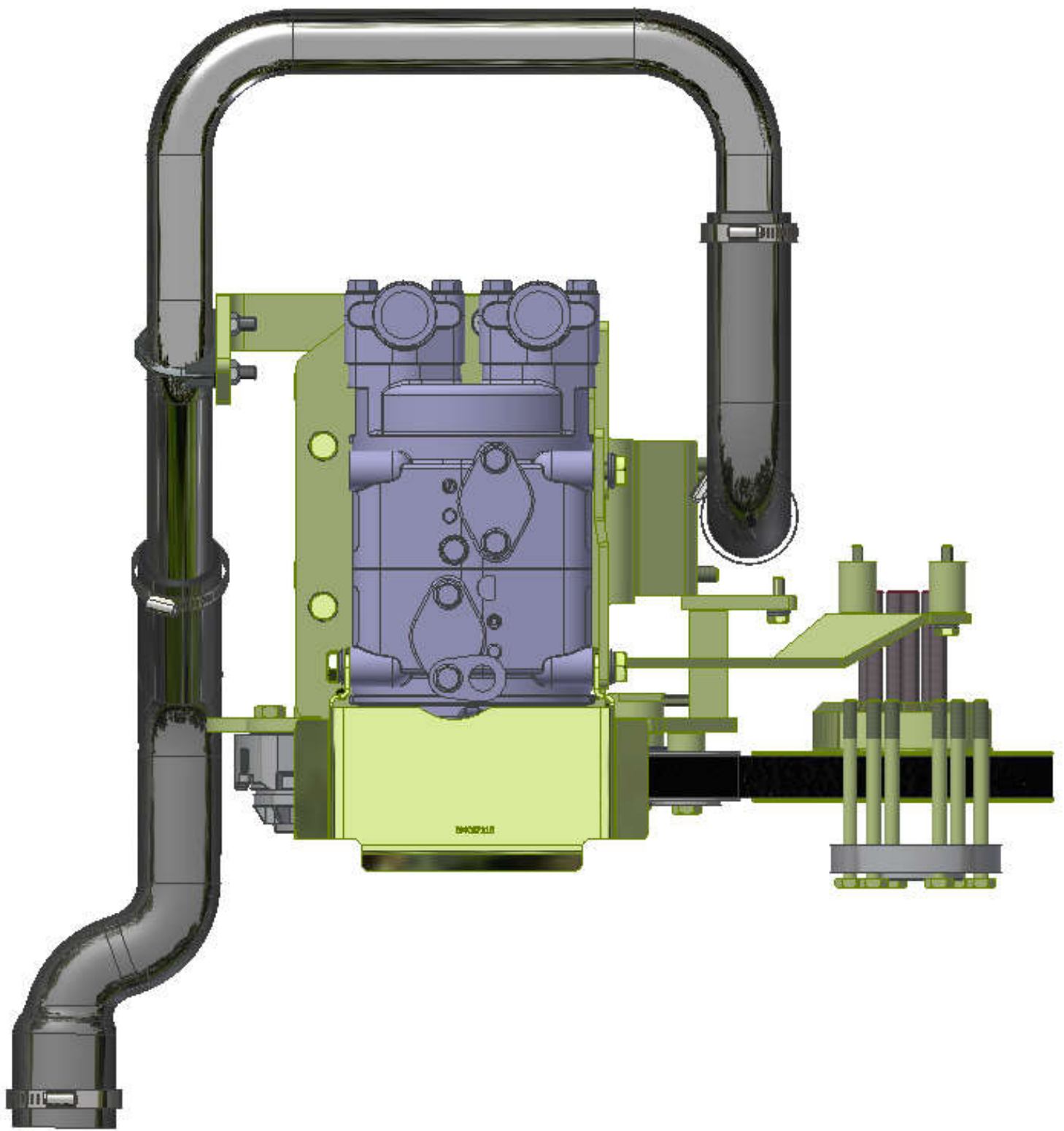
DRAWN: [Signature]
 CHECKED: [Signature]
 APPROVED: [Signature]
 DATE: 02/22/2020

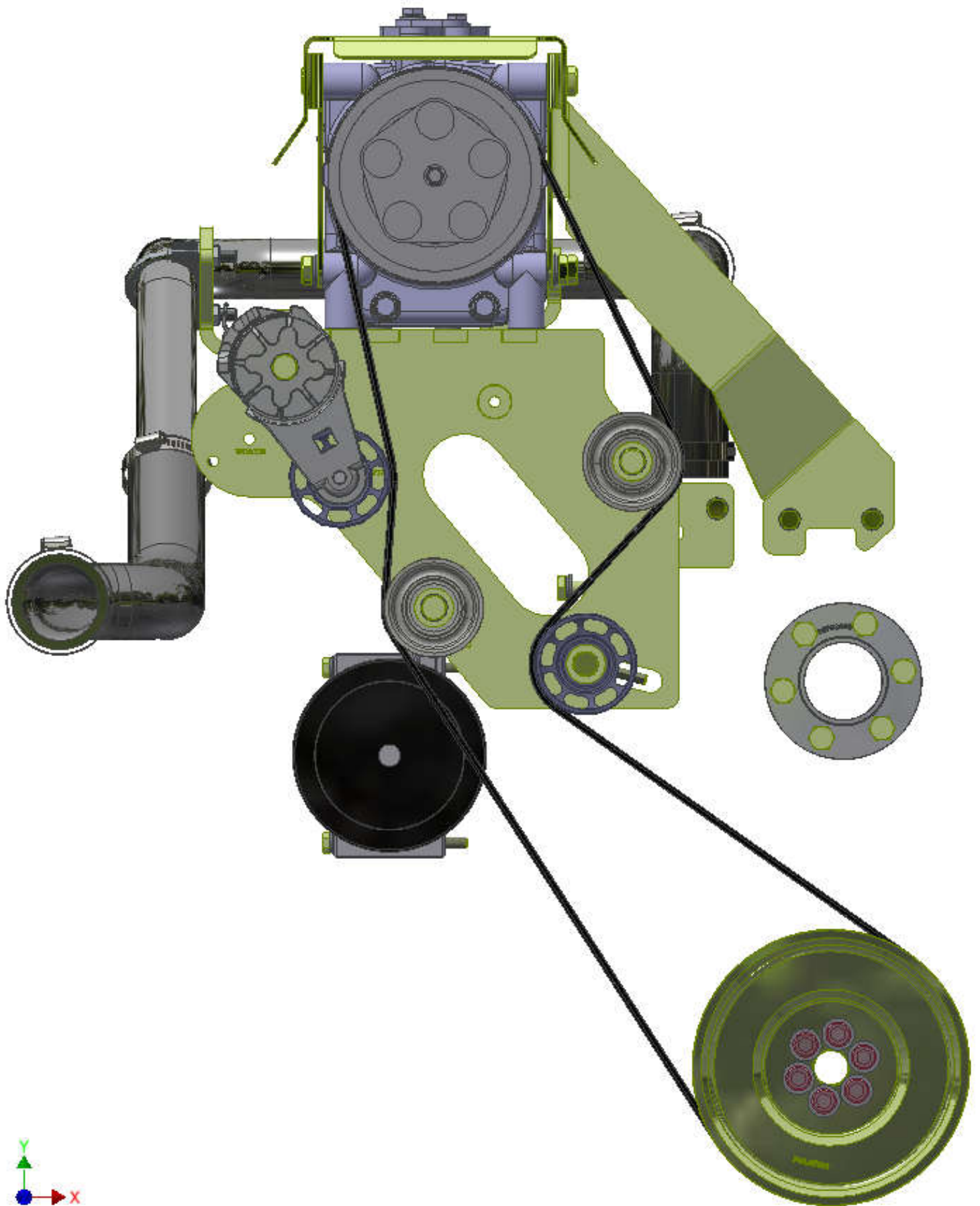
TRANSARCTIC INC.
 MT. KIT, ISB13, TM-43, IC CE300, '20
 SHEET 2 OF 2

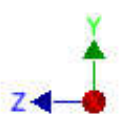
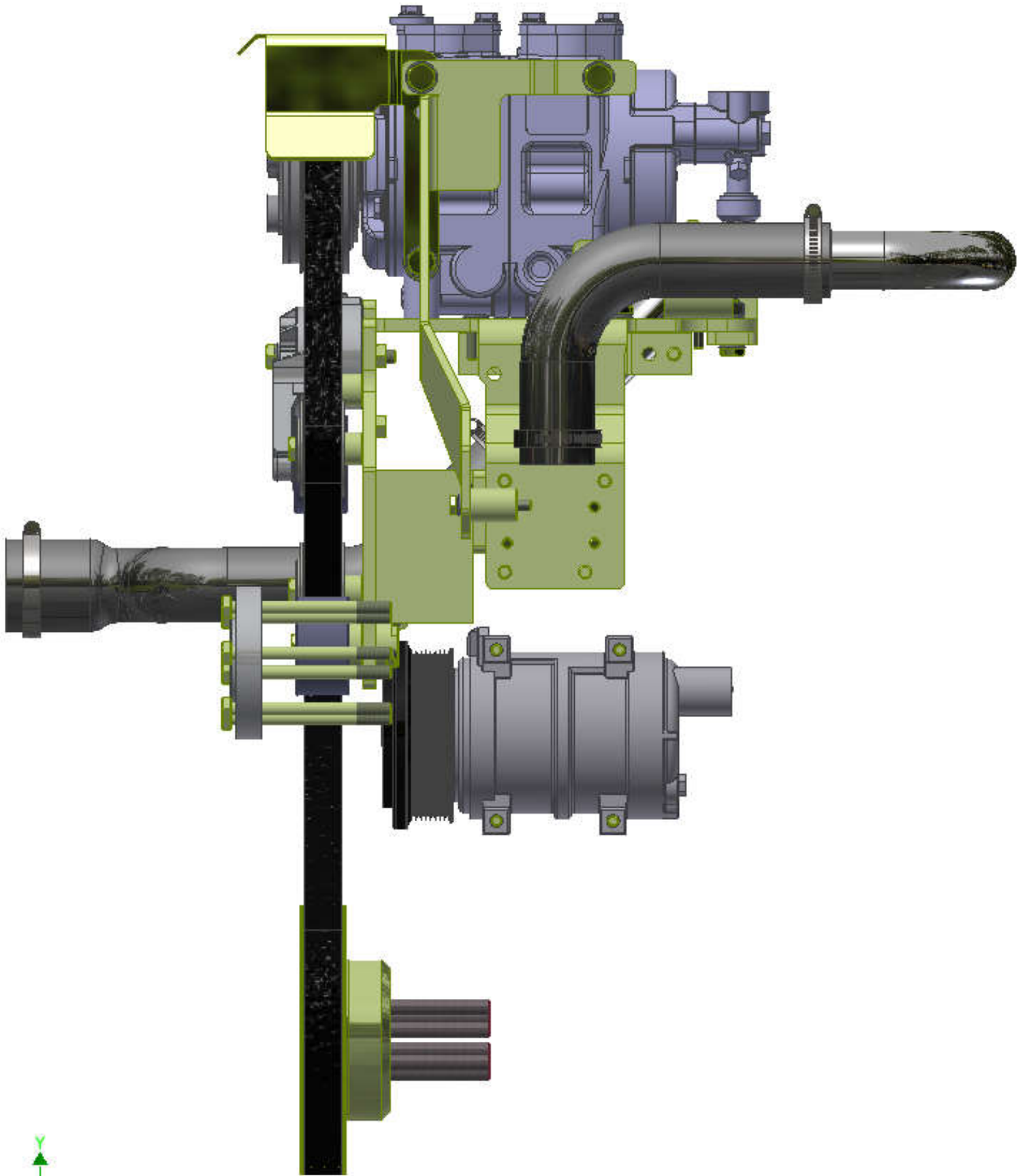


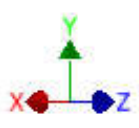
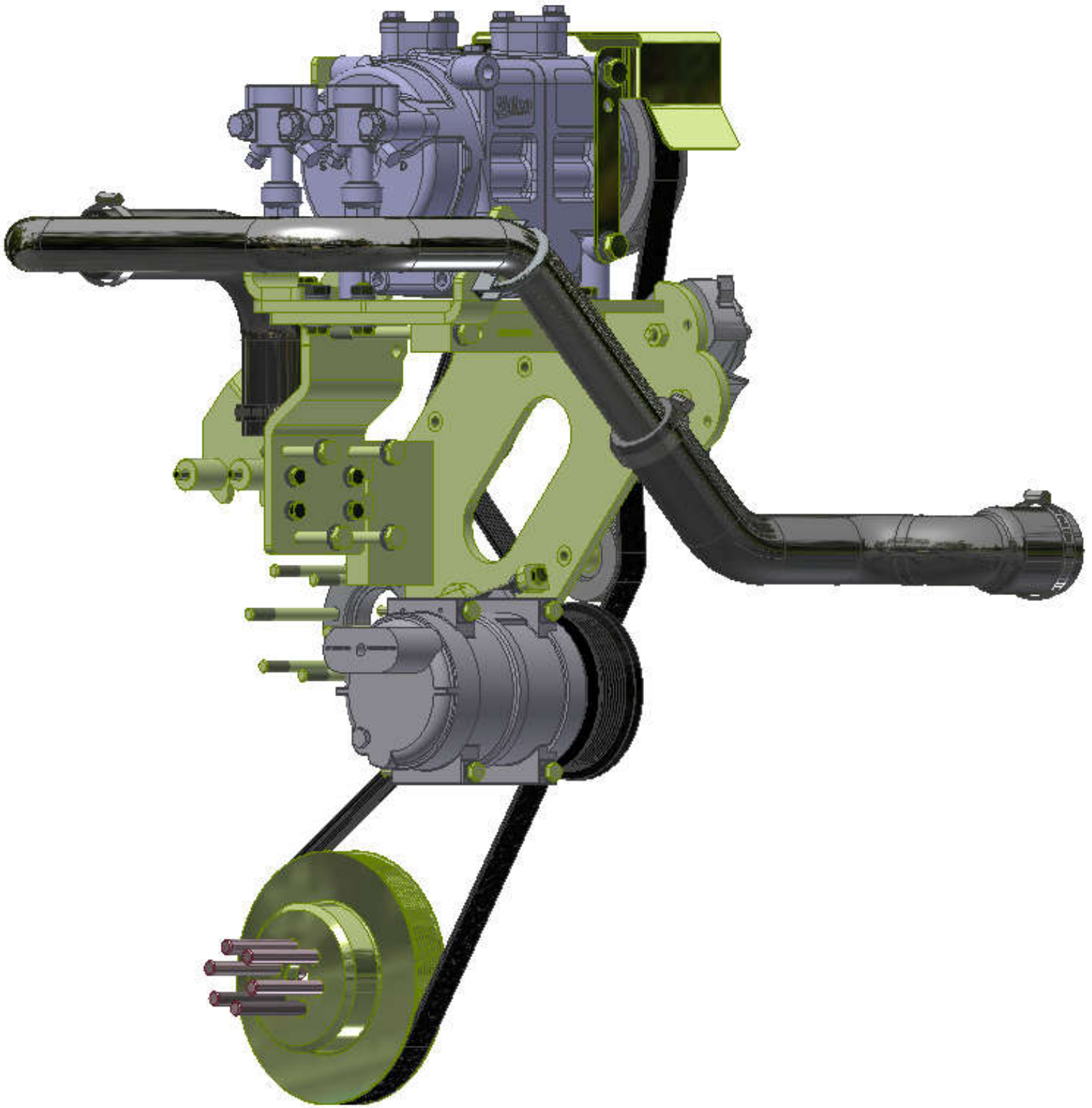


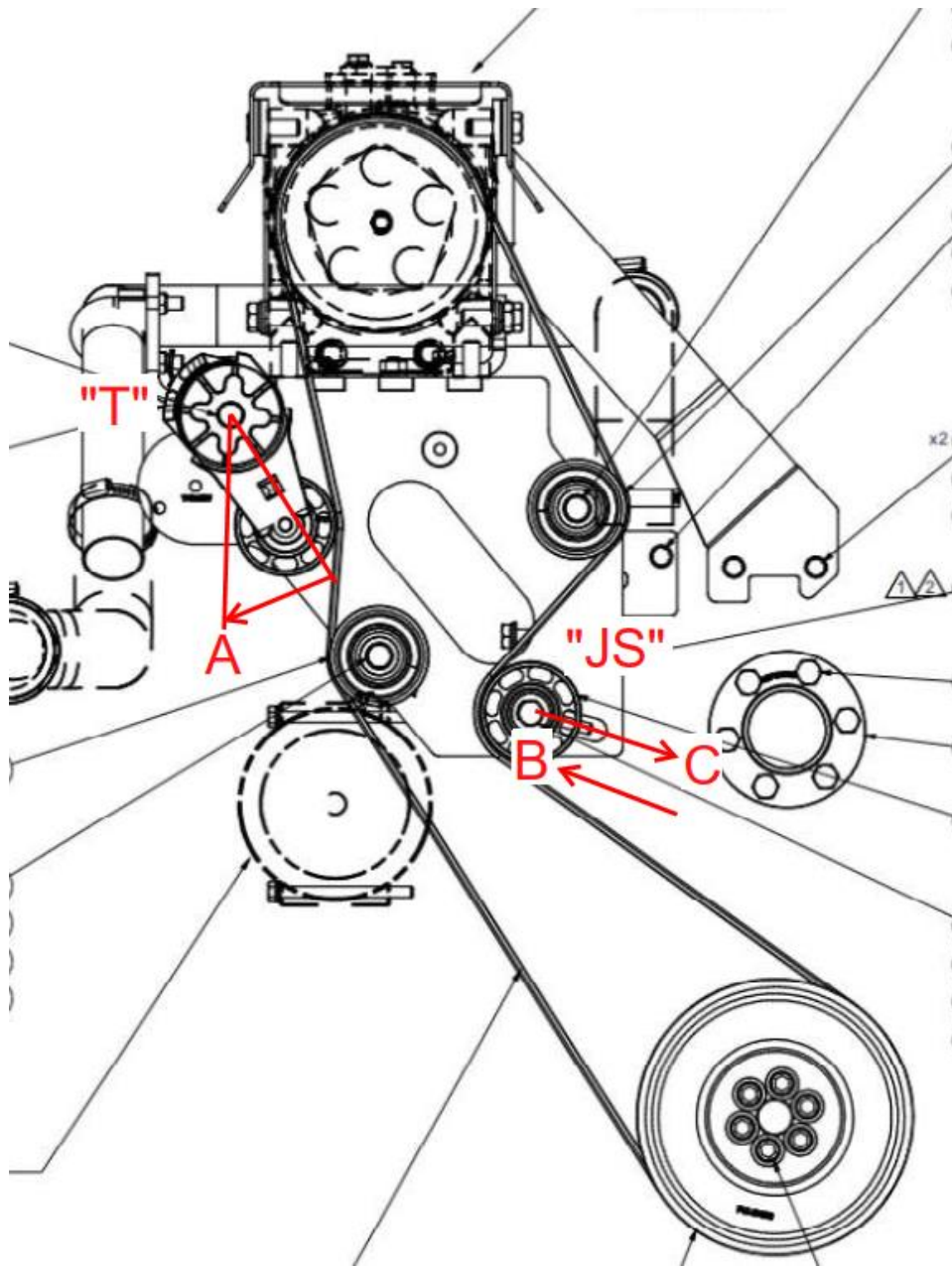












Proper “New” Belt Tensioning Procedure:

- 1) Insure engine is “locked out” from starting.
- 2) Adjust tensioner “T”, clockwise rotation, till the swing arm-pulley is in “start” (zero stroke.) “A” position and **hold** in this position.
- 3) Loosen “JS” pulley bolt, (Via the “Jackscrew” adjusting head bolt – (SEE DRAWING) Adjust “JS” in the direction of “C” Approx. 1” or more till belt is slack enough to be removed.

- 4) Install new "proper" replacement belt into position insuring that all the belt's grooves align with "all" the pulleys grooves in the loop and is seated properly.
- 5) Adjust pulley "JS" in direction of "B", until the new belt is "tight" (Snug by hand.) and tighten the "JS" pulley assembly's fastener correctly.
- 6) Double check belt alignment with all the pulleys.
- 7) Release the "T" tensioner from its "start" position so it comes into direct contact with the backside of the new belt.
- 8) Make sure that the tensioner position is clocked from 50% to 60% (linear dimension is approximately 1" (25.5mm) to 1.06" (27mm)) through its stroke travel. The "full stroke" linear dimension is approximately 2.13" (54 mm) from the fixed "start" (stop face.) on the base to the corresponding face on the "swing arm" at 100% through its stroke.
- 9) Run the A/C system (Under full load.) for approximately 1-2 hours and recheck the stroke running position of tensioner "T". If not to spec than retention the "JS" pulley assembly like before (Item# 6). (NOTE: insure that tensioner "T" is at its starting stroke position (0%) before adjusting pulley assembly "JS".)

TransArctic A/C Compressor Mount Installation Disclaimer

All compressor mounts should be installed by qualified and trained personnel using proper tools and equipment in safe working conditions following industry standard guidelines for motor vehicle service and repair.

The installer of any compressor mount purchased from TransArctic must undertake all responsibility of issues arising from that compressor bracket being installed on any vehicle. As well as insure that a **proper and sufficient ground** is established between the compressors' clutches and the vehicle's engine. Mount functionality, operation and durability can all be compromised by an incompetent installation.

Due to the many different situations, parameters and application criteria, which are beyond the compressor mount manufacturer's control, TransArctic does not warrant design, durability, or operational functionality of any compressor mount improperly installed by another party.

With no implied guarantees it is the mount installer's strict responsibility to determine safety and functionality, of the compressor mount, at the time of installation.

Please contact TransArctic with any issue arising from installation so we may better improve the product. If you have any reservations about the compressor mount integrity contact TransArctic immediately at 1-877-COLD-AIR.

Mark OEM tensioner location

Install Kit

Check for Interferences

Check to ensure that the proper OEM tensioner orientation is maintained

Run engine with A/C system engaged for at least 10 minutes to run in belt

Check OEM tensioner orientation and adjust as required

Responsabilidad limitada de TransArctic en la instalación del soporte del compresor

Todos los soportes de los compresores deben ser instalados por personas calificadas y entrenadas, usando para ello los equipos y herramientas necesarios para esta labor en buenas condiciones y según las normas y guías para el servicio y/o reparación de motores de vehículos.

El instalador de los soportes comprados en TransArctic asume toda la responsabilidad de cualquier problema que surga en el soporte del compresor al vehículo; de igual manera es responsable que el cable a tierra sea conectado entre el embrague del compresor y el motor del vehículo.

Se advierte que el buen funcionamiento y la durabilidad del soporte pueden ser comprometidos por defectos en su instalación.

Debido a las diversas situaciones que se puedan presentar fuera del control del fabricante, TransArctic no garantiza el diseño, la durabilidad o el correcto funcionamiento de cualquier equipo inapropiadamente instalado por terceros.

Esta sobreentendido que el Instalador del montaje del compresor es estrictamente responsable de la seguridad y funcionamiento del equipo en el momento de la instalación.

Si tuviera algún problema o duda acerca de la instalación del soporte del compresor pongase en contacto inmediatamente con TransArctic al teléfono 1-877-COLD-AIR de modo que podamos mejorar nuestro producto.

Note la ubicación del medidor de tensión OEM

Instale el equipo

Controlar si hay interferencias.

Asegurese que el medidor de tensión mantenga la orientación justa.

Encienda el motor por lo menos 10 minutos con el sistema A/C enganchado para que la correa corra

Controle la orientación justa del medidor de tensión y ajuste a las condiciones requeridas del fabricante