

Bill of Materials Listing

TransArctic Canada Inc.

11/27/2007

Page 1 of 1

Product Number		Description	Bin	Date	Weight	Uof M	Yield
Line	Component Prod#	Description		Unit	Qty		
KMK74161		Mt Kit, C7, BBRE, O5G, 2B, 8" Crank, '07		10/17/07	213.58		0
10	KBB84161	Mt Kit, Base, Transit, BBRE, '07		each	1		
20	KGT84161	Mt Kit, Transit, O5G, '07		each	1		
30	KPK74161	Kit, Pulley, CAT C7, BBRE, '07		each	1		
40	KAK74161	Alt. Kit, 24V, CAT, BBRE, '07		each	1		
50	HOR70683	Hose, Rad, 2" ID, Curved (70683)		each	1		
60	CLP36001	Clamp, Gear, #36,1 13/16-2 3/4 (46/70mm)		each	2		

Bill of Materials Listing

TransArctic Canada Inc.

8/1/2008

Page 1 of 1

Product Number		Description	Bin	Date	Weight	Uof M	Yield
Line	Component Prod#	Description		Unit	Qty		
KBB84161		Mt Kit, Base, Transit, BBRE, '07		8/31/2007	154.12		0
5	BEL32592	Belt, Banded B, 2591mm (102") (RBX99-2)		each	1		
20	BMC83019	Bkt, Gusset, Bumper, ISC, BBRE, '07		each	1		
30	BMC83020	Bkt, Dampner, ISC, BBRE, '07		each	1		
40	BMC83021	Bkt, Comp, Frt, ISC, BBRE, '07		each	1		
50	BMC83022	Bkt, Comp, Rear, ISC, BBRE, '07		each	1		
60	BMC83023	Bkt, Gusset, Idler, ISC, BBRE, '07		each	1		
70	BMC83024	Bkt, Main, Idler, ISC, BBRE, '07		each	1		
80	BMC83026	Bkt, Sprt, Bump, Rear, ISC, BBRE, '07		each	1		
90	BMC83027	Bkt, Sprt, Bump, Side, ISC, BBRE, '07		each	1		
100	BMC83028	Bkt, Tray, ISC, BBRE, '07		each	1		
110	BMC83029	Bkt, Shift, Tank, Weldmt, ISC, BBRE, '07		each	1		
115	BMC83031	Bkt, Slide, Block, Idler, BBRE		each	1		
120	BMN80008	Vibration Isolator, Bar, 16.63 x 2 x 1.63		each	2		
130	BMN80009	Bkt, Main, Base PI, IC, RE300		each	1		
160	BMN80025	Bkt, Back, PL, Slide, IC, RE300		each	1		
170	PUA05000	Pulley, Assy, Idler, B/S, 5", ALUM, Pit		each	1		
180	PUA05002	Pulley, Assy, Idler, AB gr, 5", ALUM, Pit		each	1		
220	SCD32812	Spacer, Col, Drl, 32.8mm x 50.8o x 12.3i		each	1		
225	SPC19010	Spacer, Col, Drl, 19mm x 28.58o x 10.32i		each	2		
240	SCD48012	Spacer, Col, Drl, 48 mm x 34.9o x 12.3i		each	1		
250	SLV17012	Sleeve, Pulley, 16.9o x 22.23mm x 12.32i		each	2		
280	KBT84161	Bag Kit, Fasteners, KBB84161		each	1		

Bill of Materials Listing

TransArctic Canada Inc.

11/27/2007

Page 1 of 1

Product Number		Description	Bin	Date	Weight	Uof M	Yield
Line	Component Prod#	Description		Unit	Qty		
KBT84161		Bag Kit, Fasteners, KBB84161		08/29/07	5.31		0
10	BTC08020	Bolt, Hex, 8 x 1.25 x 20mm, 10.9, Plt		each	2		
20	BTC08035	Bolt, Hex, 8 x 1.25 x 35mm, 10.9, Plt		each	1		
50	BTC12040	Bolt, Hex, 12 x 1.75 x 40mm, 10.9, Plt		each	10		
60	BTC12050	Bolt, Hex, 12 x 1.75 x 50mm, 10.9, Plt		each	1		
70	BTC12060	Bolt, Hex, 12 x 1.75 x 60mm, 10.9, Plt		each	1		
100	BTC12100	Bolt, Hex, 12 x 1.75 x 100mm, 10.9, Plt		each	2		
105	BTP08653	Bolt, Hex, 1/2-13unc, 6.5", 5, Plt, FT		each	1		
115	BTQ06200	Bolt, Hex, 3/8-16unc, 2.0", 8, Plt		each	2		
120	BTQ08126	Bolt, Hex, 1/2-20unf, 1.25", 8, Plt		each	12		
135	BTQ08200	Bolt, Hex, 1/2-13unc, 2.0", 8, Plt		each	3		
160	CSF06075	Capscrew, FH, 3/8-16 x .75", Alloy, Plt		each	2		
170	NTA08000	Nut, Hex, 8 x 1.25, 8.8, Plt		each	3		
190	NTA12000	Nut, Hex, 12 x 1.75, 8.8, Plt		each	13		
200	NTP06000	Nut, Hex, 3/8-16unc, 5, Plt		each	2		
230	WFA08000	Washer, Flat, 8mm, 8.8, Plt		each	4		
250	WFA12000	Washer, Flat, 12mm, 8.8, Plt		each	24		
270	WFQ08000	Washer, Flat, 1/2", 8, Plt		each	15		
280	WLA08000	Washer, Lock, 8mm, 8.8, Plt		each	3		
300	WLA12000	Washer, Lock, 12mm, 8.8, Plt		each	14		
330	WLQ08000	Washer, Lock, 1/2", 8, Plt		each	13		

Bill of Materials Listing

TransArctic Canada Inc.

11/27/2007

Page 1 of 1

Product Number		Description	Bin	Date	Weight	Uof M	Yield
Line	Component Prod#	Description		Unit	Qty		
KGT84161		Mt Kit, Transit, O5G, '07		10/19/07	10.76		0
10	BMN80010	Bkt, Main, Slide, Assy, O5G, IC, RE300		each	1		
20	BMN80024	Bkt, Comp, FRT, Z, IC, RE300		each	1		
30	SCD29213	Spacer, Col, Drl, 29.21mm x 25.4o x 12.7i		each	2		
40	BTQ06150	Bolt, Hex, 3/8-16unc, 1.50", 8, Plt		each	2		
50	NTP07000	Nut, Hex, 7/16-14unc, 5, Plt		each	4		
60	WFN06000	Washer, Flat, 3/8", 2, Plt		each	2		
70	WLP07000	Washer, Lock, 7/16", 5, Plt		each	4		
80	WLP06000	Washer, Lock, 3/8", 5, Plt		each	2		

Bill of Materials Listing

TransArctic Canada Inc.

3/3/2008

Page 1 of 1

Product Number		Description	Bin	Date	Weight	Uof M	Yield
Line	Component Prod#	Description		Unit	Qty		
KPK74161		Kit, Pulley, CAT C7, BBRE, '07		10/22/07	20.45		0
10	PUL70022	Pulley, Crank, CAT C7, 2B/X, 8" D/A		each	1		
20	BTC10070	Bolt, Hex, 10 x 1.5 x 70mm, 10.9, Plt		each	8		
30	WFA10000	Washer, Flat, 10mm, 8.8, Plt		each	8		

Bill of Materials Listing

TransArctic Canada Inc.

11/27/2007

Page 1 of 1

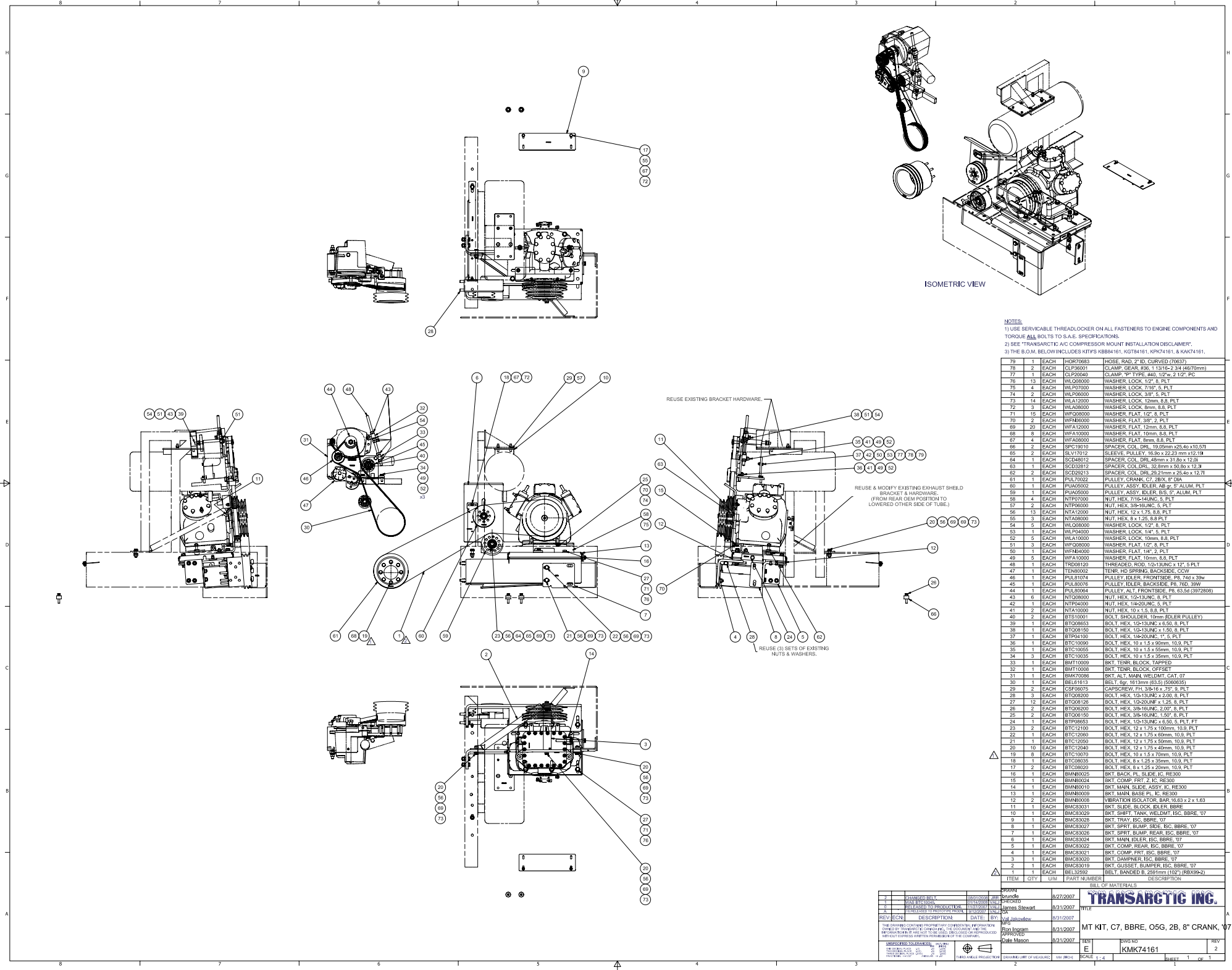
Product Number		Description	Bin	Date	Weight	Uof M	Yield
Line	Component Prod#	Description		Unit	Qty		
KAK74161		Alt. Kit, 24V, CAT, BBRE, '07		10/04/07	28.30		0
10	BEL61613	Belt, 6gr, 1613mm (63.5") (5060635)		each	1		
20	BMK70086	Bkt, Alt, Main, Weldmt, CAT, 07		each	1		
30	BMT10008	Bkt, Tenr, Block, Offset		each	1		
40	BMT10009	Bkt, Tenr, Block, Tapped		each	1		
50	PUL80076	Pulley, Idler, Backside, P8, 76d (89062)		each	1		
60	PUL81074	Pulley, Idler, Frontside, P8,74d (89103)		each	1		
70	PUL80064	Pulley,ALT,Frontside,P8,63.5d (3972808)		each	1		
80	TEN80002	Tenr, HD Spring, BackSide, CCW (89200A)		each	1		
90	CLP20040	Clamp, "P" type, #40, 1/2"w, 2 1/2", PC		each	1		
100	TRD08120	Threaded, Rod, 1/2-13unc x 12", 5, Plt		piece	1		
110	KBA74161	Bag Kit, Fasteners, KAK74161		each	1		

Bill of Materials Listing

TransArctic Canada Inc.

3/4/2008
Page 1 of 1

Product Number		Description	Bin	Date	Weight	Uof M	Yield
Line	Component Prod#	Description		Unit	Qty		
KBA74161		Bag Kit, Fasteners, KAK74161		03/04/08	1.33		0
10	BTS10001	Bolt, Shoulder, 10mm (89064)		each	2		
20	BTC10090	Bolt, Hex, 10 x 1.5 x 90mm, 10.9, Plt		each	1		
30	BTC10055	Bolt, Hex, 10 x 1.5 x 55mm, 10.9, Plt,FT		each	1		
40	BTC10035	Bolt, Hex, 10 x 1.5 x 35mm, 10.9, Plt		each	2		
45	BTC10025	Bolt, Hex, 10 x 1.5 x 25mm, 10.9, Plt		each	1		
50	BTQ08653	Bolt, Hex, 1/2-13unc, 6.5", 8, Plt		each	1		
60	BTQ08150	Bolt, Hex, 1/2-13unc, 1.5", 8, Plt		each	1		
70	BTP04100	Bolt, Hex, 1/4-20unc, 1", 5, Plt		each	1		
80	NTA10000	Nut, Hex, 10 x 1.5, 8.8, Plt		each	2		
90	NTQ08000	Nut, Hex, 1/2-13unc, 8, Plt		each	6		
100	NTP04000	Nut, Hex, 1/4-20unc, 5, Plt		each	1		
110	WFA10000	Washer, Flat, 10mm, 8.8, Plt		each	5		
120	WFO08000	Washer, Flat, 1/2", 8, Plt		each	3		
130	WFN04000	Washer, Flat, 1/4", 2, Plt		each	1		
140	WLA10000	Washer, Lock, 10mm, 8.8, Plt		each	5		
150	WLQ08000	Washer, Lock, 1/2", 8, Plt		each	5		
160	WLP04000	Washer, Lock, 1/4", 5, Plt		each	1		



NOTES:
 1) USE SERVICABLE THREADLOCKER ON ALL FASTENERS TO ENGINE COMPONENTS AND TORQUE ALL BOLTS TO S.A.E. SPECIFICATIONS.
 2) SEE 'TRANSARCTIC A/C COMPRESSOR MOUNT INSTALLATION DISPLAINTER'.
 3) THE B.O.M. BELOW INCLUDES KIT'S KB884161, KGT94161, & KAK74161.

ITEM	QTY	UOM	PART NUMBER	DESCRIPTION
79	1	EACH	HR70683	HOSE, RAD, 2" ID, CURVED (70837)
78	2	EACH	CLP36001	CLAMP, GEAR, #36, 1.1316-2.34 (4670mm)
77	1	EACH	CLP29040	CLAMP, "F" TYPE, #40, 102"x 2 1/2", PC
76	13	EACH	VLQ08000	WASHER, LOCK, 1/2", 8, PLT
75	4	EACH	WLP07000	WASHER, LOCK, 7/16", 5, PLT
74	2	EACH	WLP06000	WASHER, LOCK, 3/8", 5, PLT
73	14	EACH	WLA12000	WASHER, LOCK, 1/2mm, 8.8, PLT
72	3	EACH	WLA06000	WASHER, LOCK, 8mm, 8.8, PLT
71	13	EACH	WFO02000	WASHER, FLAT, 1/2", 8, PLT
70	2	EACH	WFO05000	WASHER, FLAT, 3/8", 2, PLT
69	20	EACH	WFA12000	WASHER, FLAT, 12mm, 8.8, PLT
68	8	EACH	WFA10000	WASHER, FLAT, 10mm, 8.8, PLT
67	8	EACH	WFA05000	WASHER, FLAT, 8mm, 8.8, PLT
66	2	EACH	SFC19010	SPACER, COL, DRL, 19.05mm x25.40 x10.5(7)
65	2	EACH	SLV11002	SLIDER, PULLEY, 10.0mm x22.0mm x12.194
64	1	EACH	SCD48012	SPACER, COL, DRL, 48mm x 31.20 x 12.08
63	1	EACH	SCD32812	SPACER, COL, DRL, 32.8mm x 50.80 x 12.38
62	2	EACH	ISD20024	SPACER, COL, DRL, 20.2mm x 25.40 x 12.17
61	1	EACH	PUL70022	PULLEY, CRANK, C7, 2B X, 8" DIA
60	1	EACH	PJA05002	PULLEY, ASSY, IDLER, AS PR, 5" ALUM, PLT
59	2	EACH	PJA05000	PULLEY, ASSY, IDLER, 5", ALUM, PLT
58	4	EACH	NTR07000	NUT, HEX, 7/16-14UNC, 5, PLT
57	2	EACH	NTR06000	NUT, HEX, 3/8-18UNC, 5, PLT
56	13	EACH	NTA12000	NUT, HEX, 1/2 x 1.75, 8.8, PLT
55	3	EACH	NTA08000	NUT, HEX, 8 x 1.25, 8.8, PLT
54	5	EACH	WLA09000	WASHER, LOCK, 1/2", 8, PLT
53	1	EACH	WLP04000	WASHER, LOCK, 1/4", 5, PLT
52	5	EACH	WLA10000	WASHER, LOCK, 10mm, 8.8, PLT
51	3	EACH	WFP02000	WASHER, FLAT, 1/2", 8, PLT
50	1	EACH	WFA10000	WASHER, FLAT, 10, 8.8, PLT
49	5	EACH	WFA10000	WASHER, FLAT, 10mm, 8.8, PLT
48	1	EACH	TRD08120	THREADED ROD, T2-1/2UNC x 12", 5, PLT
47	1	EACH	TENR002	TENR, HD, SPRING, BACKSIDE, C/W
46	1	EACH	PUL81074	PULLEY, IDLER, FRONTSIDE, P8, 74d x 39w
45	1	EACH	PUL80076	PULLEY, IDLER, BACKSIDE, P8, 76d, 39W
44	1	EACH	PUL80074	PULLEY, ALT, FRONTSIDE, P8, 63.6d (372898)
43	6	EACH	NTR08000	NUT, HEX, 1/2-13UNC, 8, PLT
42	1	EACH	NTR04000	NUT, HEX, 1/4-20UNC, 5, PLT
41	2	EACH	NTA10000	NUT, HEX, 1/2 x 1.75, 8.8, PLT
40	2	EACH	BTS10001	BOLT, SHOULDER, 10mm (IDLER PULLEY)
39	1	EACH	BTQ08653	BOLT, HEX, 1/2-13UNC x 4.50, 8, PLT
38	1	EACH	BTQ08150	BOLT, HEX, 1/2-13UNC x 1.50, 8, PLT
37	1	EACH	BTP04100	BOLT, HEX, 1/4-20UNC, 1", 5, PLT
36	1	EACH	BTG10090	BOLT, HEX, 10 x 1.5 x 80mm, 10.9, PLT
35	1	EACH	BTG10055	BOLT, HEX, 10 x 1.5 x 55mm, 10.9, PLT
34	3	EACH	BTG10035	BOLT, HEX, 10 x 1.5 x 35mm, 10.9, PLT
33	1	EACH	BMT10059	BKT, TENR, BLOCK, TAPPED
32	1	EACH	BMT10058	BKT, TENR, BLOCK, OFFSET
31	1	EACH	BMK70366	BKT, ALT, MAIN, WELDMT, CAT, 07
30	3	EACH	BEL11613	BELT, 6gr, 10 1/2mm (63.0mm ID/608085)
29	2	EACH	CSF70075	CAPSCREW, PH, 3/8" x 1 1/2", 9, PLT
28	3	EACH	BTQ08200	BOLT, HEX, 1/2-13UNC x 2.00, 8, PLT
27	12	EACH	BTQ08126	BOLT, HEX, 1/2-13UNC x 1.25, 8, PLT
26	2	EACH	BTQ08020	BOLT, HEX, 3/8-18UNC, 1.00, 8, PLT
25	2	EACH	BTQ08150	BOLT, HEX, 3/8-18UNC, 1.50", 8, PLT
24	1	EACH	BTQ08653	BOLT, HEX, 1/2-13UNC x 4.50, 5, PLT, FT
23	2	EACH	BTG12100	BOLT, HEX, 12 x 1.75 x 100mm, 10.9, PLT
22	1	EACH	BTG12060	BOLT, HEX, 12 x 1.75 x 60mm, 10.9, PLT
21	1	EACH	BTG12050	BOLT, HEX, 12 x 1.75 x 50mm, 10.9, PLT
20	10	EACH	BTG12040	BOLT, HEX, 12 x 1.75 x 40mm, 10.9, PLT
19	6	EACH	BTG10070	BOLT, HEX, 10 x 1.5 x 70mm, 10.9, PLT
18	8	EACH	BTG08035	BOLT, HEX, 8 x 1.25 x 35mm, 10.9, PLT
17	2	EACH	BTG08020	BOLT, HEX, 8 x 1.25 x 20mm, 10.9, PLT
16	1	EACH	BMN8025	BKT, BACK, PL, SLIDE, IC, RE300
15	1	EACH	BMN8024	BKT, COMP, FRG, 2, IC, RE300
14	1	EACH	BMN8019	BKT, MAIN, SLIDER, ASSY, IC, RE300
13	1	EACH	BMN8009	BKT, MAIN, BASE, PL, IC, RE300
12	2	EACH	BMN8008	VIBRATION ISOLATOR, BAR, 10.00 x 2 x 1.63
11	1	EACH	BMN8003	BKT, BLOCK, IDLER, BBRE
10	1	EACH	BMN8029	BKT, SHFT, TANK, WELDMT, ISC, BBRE, 07
9	1	EACH	BMN8028	BKT, TRAY, ISC, BBRE, 07
8	1	EACH	BMN8027	BKT, SPRT, BUMR, SIDE, ISC, BBRE, 07
7	1	EACH	BMN8026	BKT, SPRT, BUMR, REAR, ISC, BBRE, 07
6	1	EACH	BMN8024	BKT, MAIN, IDLER, ISC, BBRE, 07
5	1	EACH	BMN8022	BKT, COMP, REAR, ISC, BBRE, 07
4	1	EACH	BMN8021	BKT, COMP, FRG, ISC, BBRE, 07
3	1	EACH	BMN8020	BKT, DAMPER, ISC, BBRE, 07
2	1	EACH	BMN8019	BKT, GUSSET, BUMPER, ISC, BBRE, 07
1	1	EACH	BEL32592	BELT, BANDED B, 2891mm (102" (RBX9-2)

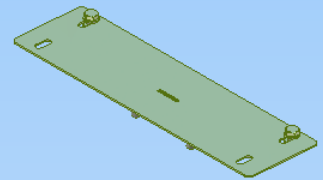
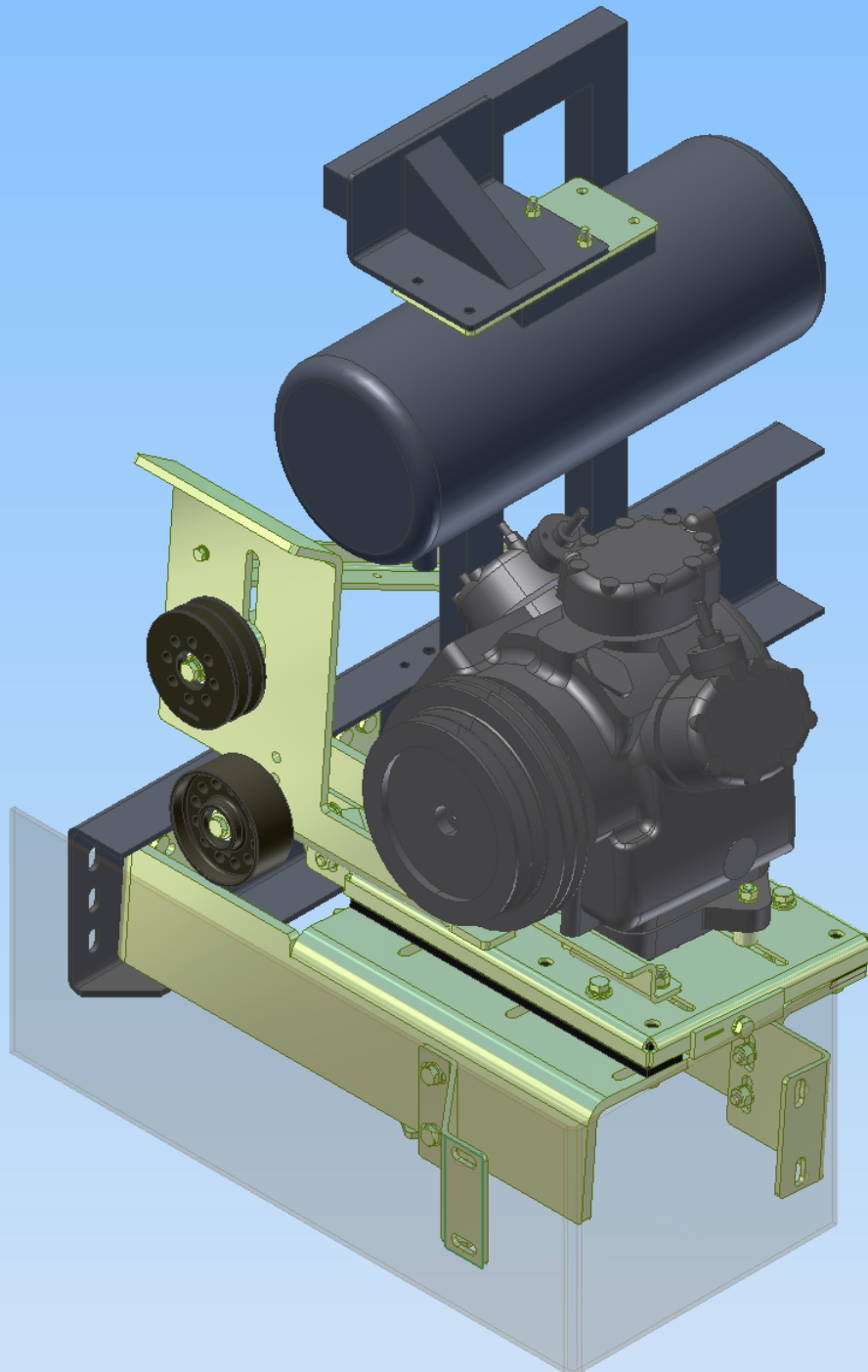
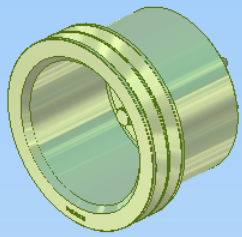
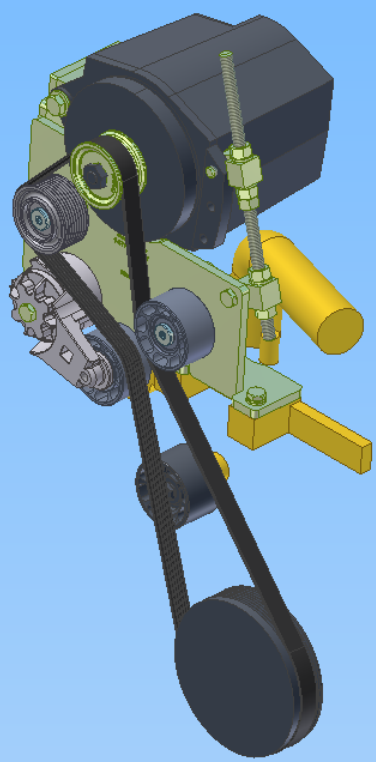
REV	DESCRIPTION	DATE	BY
1	ISSUE	8/27/2007	James Shearst
2	REVISED TO REFLECT CHANGES TO THE B.O.M.	8/21/2007	John Logan
3	REVISED TO REFLECT CHANGES TO THE B.O.M.	8/13/2007	John Logan
4	REVISED TO REFLECT CHANGES TO THE B.O.M.	8/13/2007	John Logan
5	REVISED TO REFLECT CHANGES TO THE B.O.M.	8/13/2007	John Logan

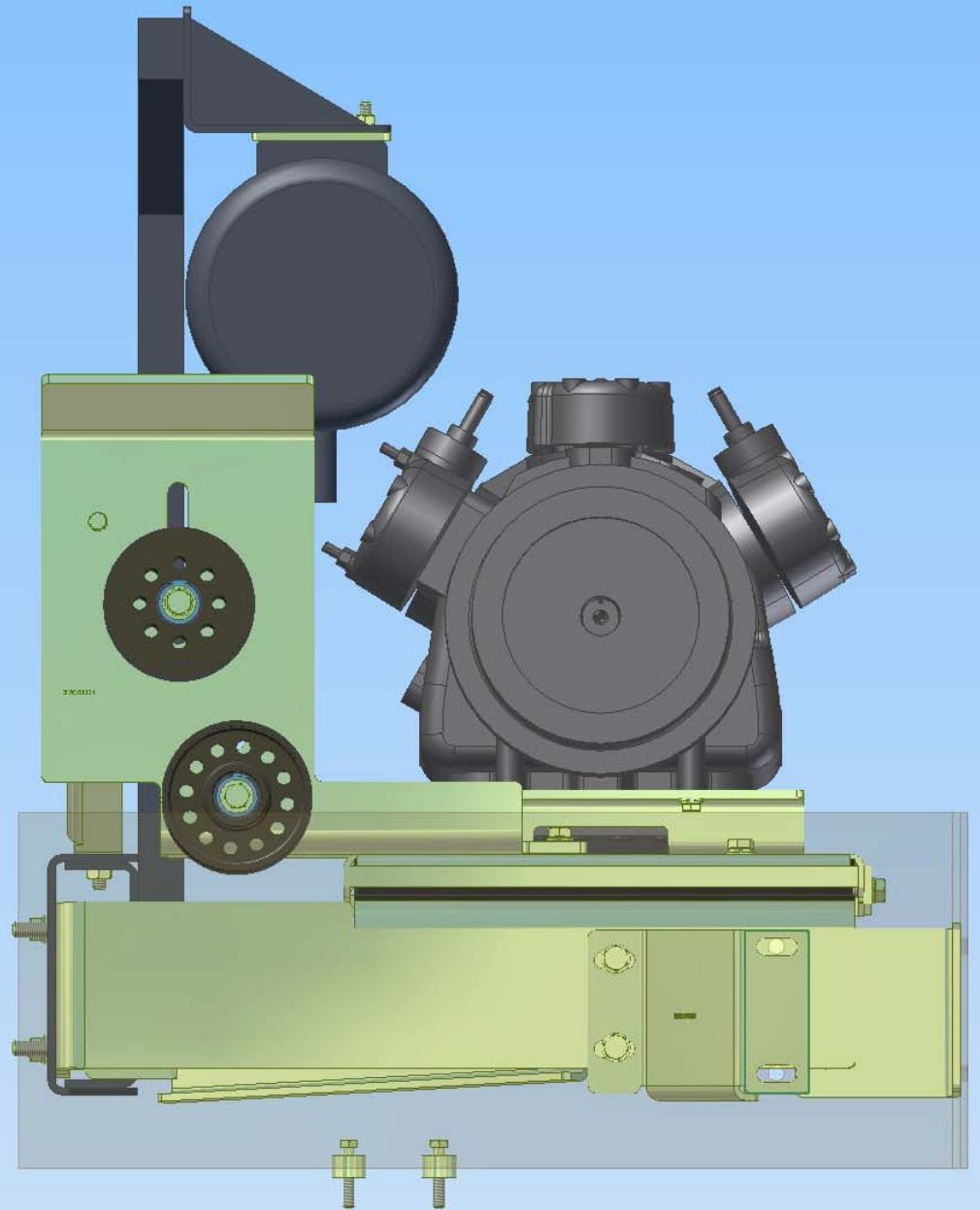
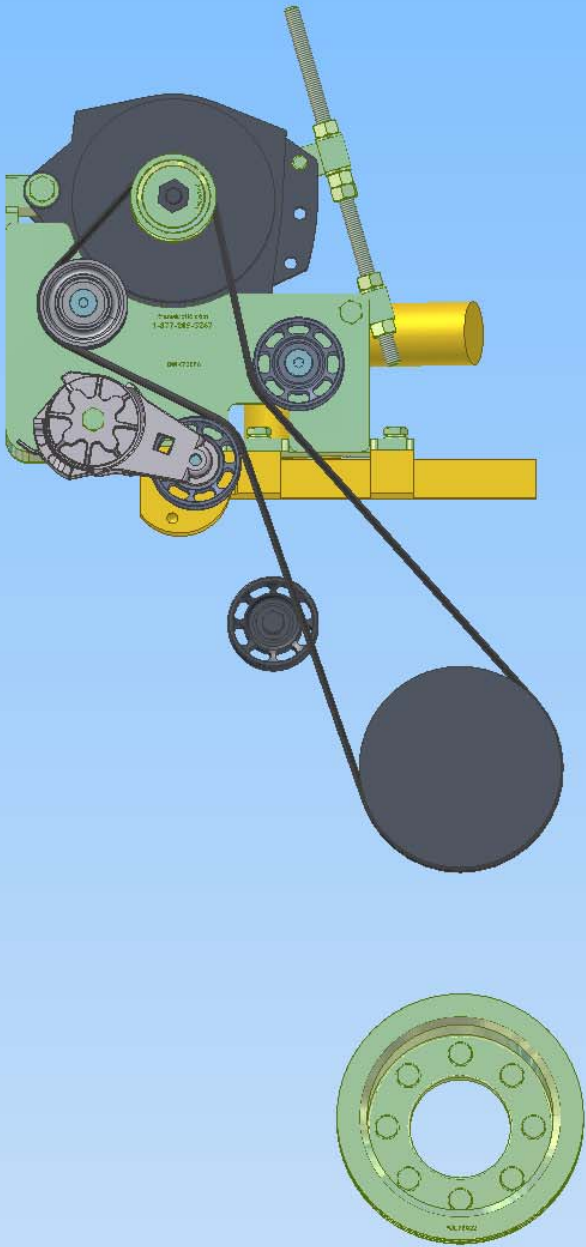
DATE: 8/27/2007
 TIME: 10:45 AM
 BY: John Logan
 CHECKED: John Logan
 APPROVED: John Logan
 TITLE: MT KIT, C7, BBRE, OSG, 2B, 8" CRANK, 07

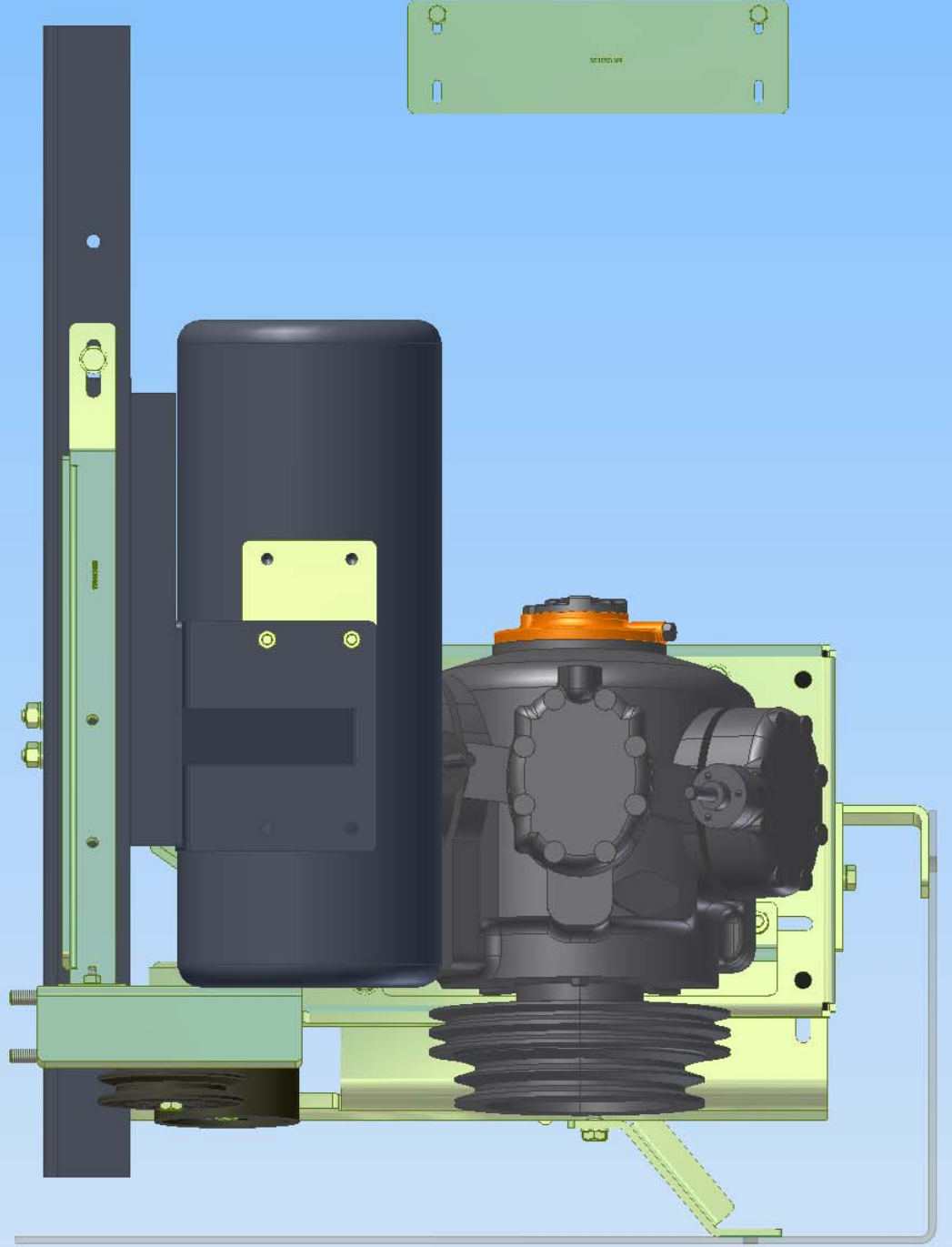
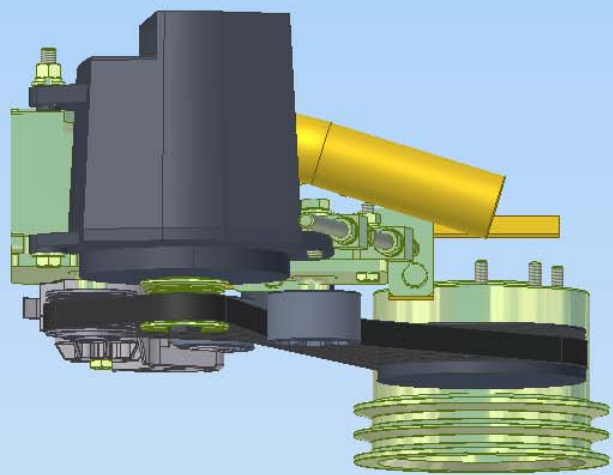
TRANSARCTIC INC.
 10000 WILSON BLVD
 WILSON, NC 27157
 TEL: 704-833-1000
 FAX: 704-833-1001
 WWW.TRANSARCTIC.COM

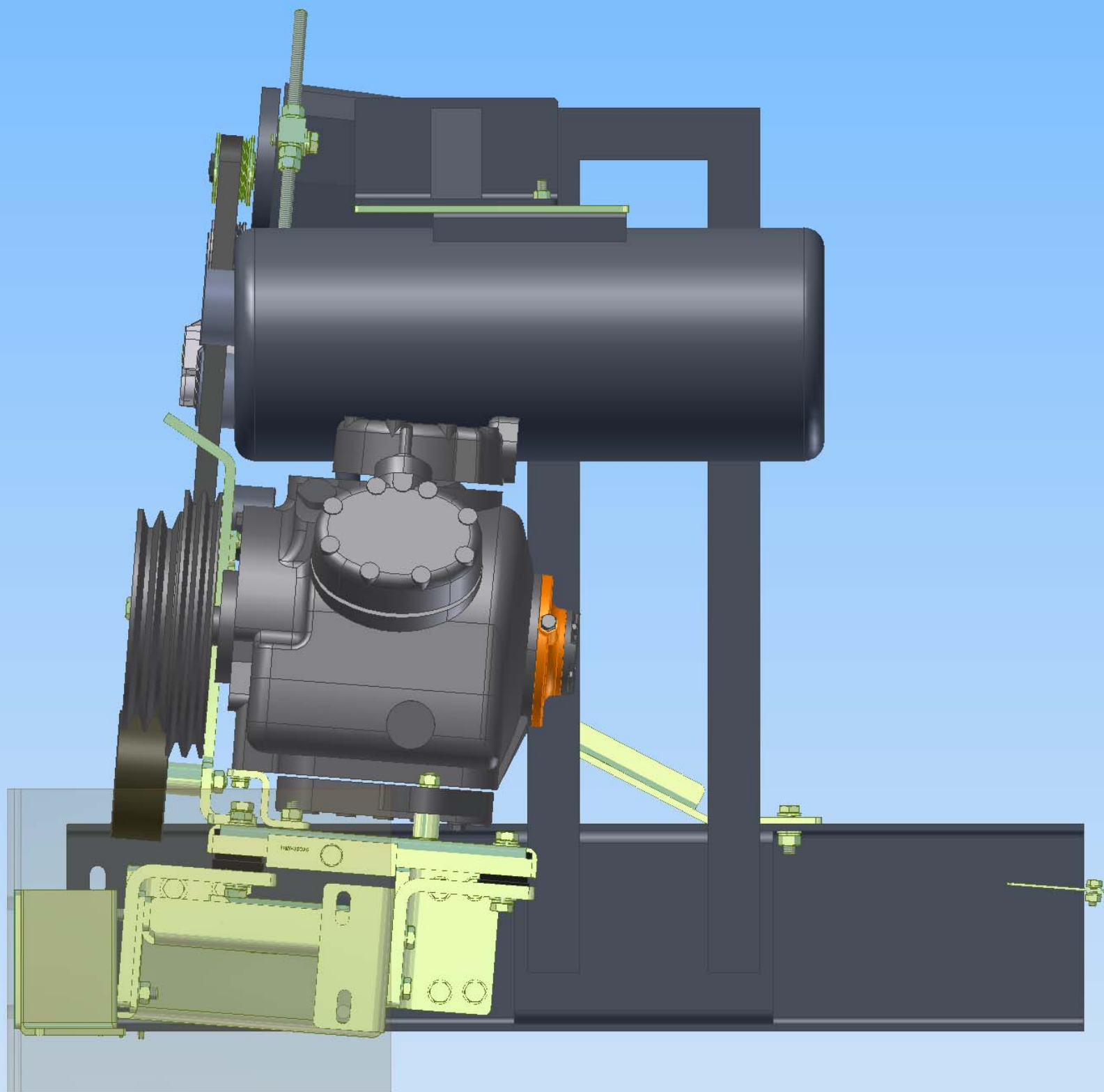
UNAPPROVED TO BE USED
 THIS DRAWING CONTAINS PROPRIETARY CONFIDENTIAL INFORMATION
 ANY REPRODUCTION OR DISSEMINATION OF THIS DRAWING WITHOUT THE WRITTEN PERMISSION OF THE COMPANY IS STRICTLY PROHIBITED.

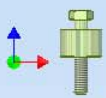
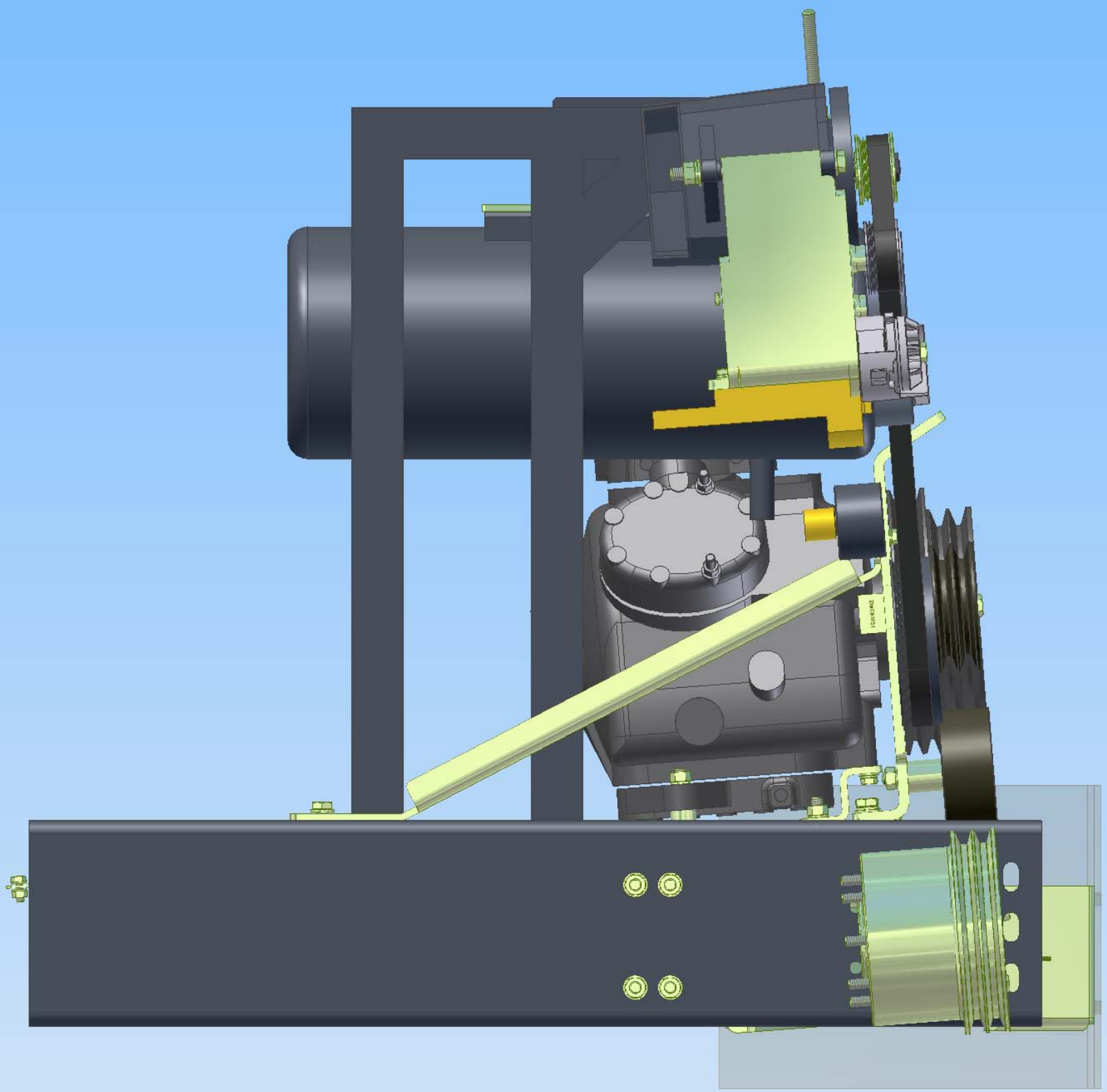
DRAWN: JEFF OF NEALS INC THE BENCH
 SCALE: 1:1
 SHEET 1 OF 2











TransArctic A/C Compressor Mount Installation Disclaimer

All compressor mounts should be installed by qualified and trained personnel using proper tools and equipment in safe working conditions following industry standard guidelines for motor vehicle service and repair.

The installer of any compressor mount purchased from TransArctic must undertake all responsibility of issues arising from that compressor bracket being installed on any vehicle. As well as insure that a **proper and sufficient ground** is established between the compressors' clutches and the vehicle's engine. Mount functionality, operation and durability can all be compromised by an incompetent installation.

Due to the many different situations, parameters and application criteria, which are beyond the compressor mount manufacturer's control, TransArctic does not warrant design, durability, or operational functionality of any compressor mount improperly installed by another party.

With no implied guarantees it is the mount installer's strict responsibility to determine safety and functionality, of the compressor mount, at the time of installation.

Please contact TransArctic with any issue arising from installation so we may better improve the product. If you have any reservations about the compressor mount integrity contact TransArctic immediately at 1-877-COLD-AIR.