

Bill of Materials Listing

TransArctic Canada Inc.

1/13/2011

Page 1 of 1

Product Number		Description	Bin	Date	Weight	Uof M	Yield
Line	Component Prod#	Description		Unit	Qty		
KMC82562		Mt Kit, ISC, D3RE F400, 8" Crank, '10		4/9/2010	201.70		0
0	BEL22235	Belt, B gr, 2235mm (88") (BX85)		each	2		
10	BMC83047	Bkt, Brace, Vert, RR, Bumper, ISC, D3		each	1		
30	BMC83051	Bkt, Side, Extention, Plate		each	2		
40	BMC83052	Bkt, Main, RR Plate, MFDT, RE300		each	1		
50	BMC83053	Bkt, Diag, Brace RR, MFDT, RE300		each	1		
60	BMC83054	Bkt, Main, Idler, Weldm't, RE300		each	1		
70	BMC83057	Bkt, Main, Frt Pl, MFDT, RE300		each	1		
80	BMC83058	Bkt, Cover, Light Pl, MF DT, RE300		each	1		
90	BMC83059	Bkt, Diag, Brace Frt, MF DT, RE300		each	1		
95	BMC83070	Bkt, Sup, Weldm't, ISC, D3RE, '10		each	1		
96	BMC83075	Bkt,PI, Exhaust, Adapter, D3RE, '10		each	1		
100	BMN80008	Vibration Isolator, Bar, 16.50 x 2 x 1.50		each	2		
110	BMN80009	Bkt, Main, Base Pl, IC, RE300		each	1		
120	BMN80031	Bkt, Main, Slide, Assy, 05K, IC, RE300		each	1		
130	BMN80032	Bkt, Adapter, PL, IC, RE300		each	1		
140	BMN80025	Bkt, Back, PL, Slide, IC, RE300		each	1		
143	BMN80057	Bkt, Comp, FRT, Bar, Bitzer, RE300		each	1		
145	BMN80058	Bkt, Comp, RR, Bar, Bitzer, RE300		each	1		
150	CLP04000	Clamp, T bolt, Spring, 4", CAC		each	2		
151	FTS06006	Ftg, Pipe, Adapter, Bulkhead, 1/8x1-1/2		each	1		
152	FTS06007	Ftg, Pipe, Elbow, 90 DEG, Male		each	2		
155	HOA04083	Hose, Flex, CAC, 4.0d x 8.0, 3 ring		each	1		
160	PUA05012	Pulley, Assy, Idler,B/BX gr,5", STL,Plt		each	1		
170	PUL80074	Pulley, Idler, B/S, Wide, 76d (89102)		each	1		
180	PUL89322	Pulley, Crank, ADD-ON, Combo, ISL, 2B/3V		each	1		
195	SCD37012	Spacer, Col, Drl, 37 mm x 25.4o x 12.3i		each	1		
200	SCD41012	Spacer, Col, Drl, 41 mm x 25.4o x 12.3i		each	1		
203	SLV17012	Sleeve, Pulley, 16.9o x 22.23mm x 12.32i		each	2		
204	TUP00014	Ftg, Tubing, Plastic, 1/4 OD, Black		feet	1		
205	TUS04095	Tube, Stl, Exh,4"o.d.,D3RE, ISC, '10		each	1		
210	KBC82562	Bag Kit, Fasteners, KMC82562		each	1		

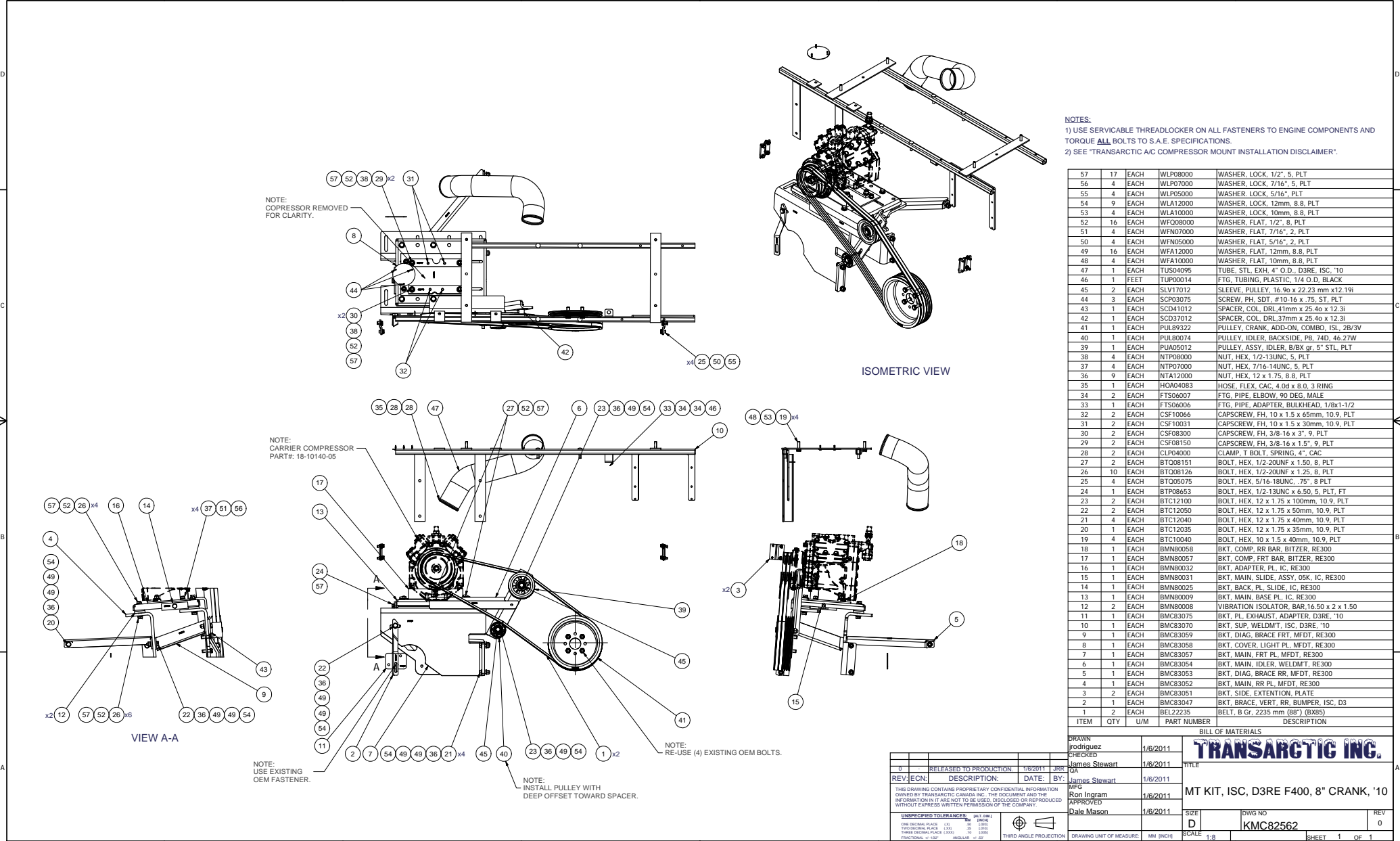
Bill of Materials Listing

TransArctic Canada Inc.

1/18/2011

Page 1 of 1

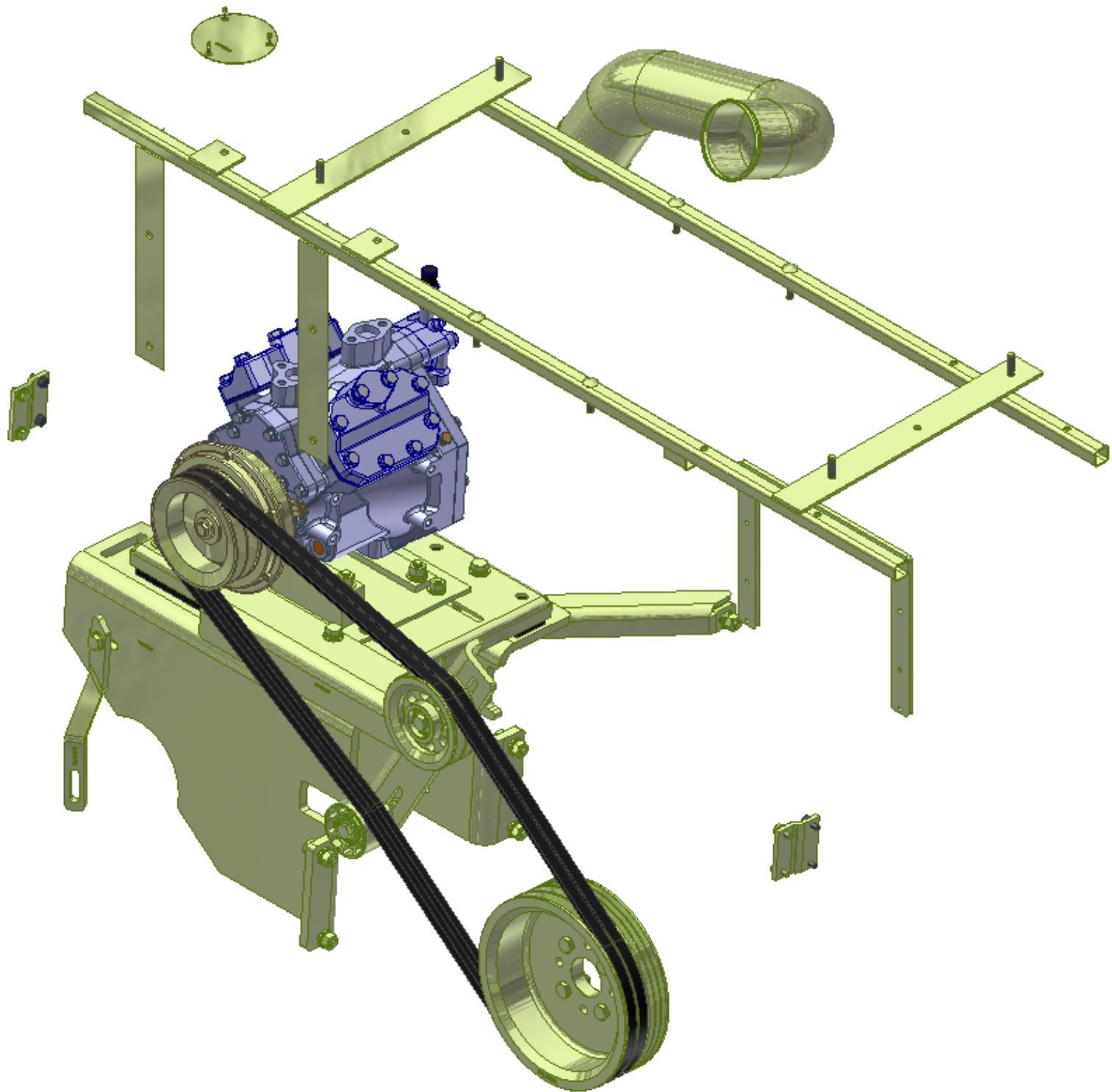
Product Number	Description	Date	Weight	Uof M	Yield
Line Component Prod#	Description	Bin Unit	Qty		
KBC82562	Bag Kit, Fasteners, KMC82562	4/12/2010	5.30		0
0 BTC10040	Bolt, Hex, 10 x 1.5 x 40mm, 10.9, Plt,FT	each	4		
10 BTC12035	Bolt, Hex, 12 x 1.75 x 35mm, 10.9,Plt,FT	each	1		
20 BTC12040	Bolt, Hex, 12 x 1.75 x 40mm, 10.9,Plt,FT	each	4		
30 BTC12050	Bolt, Hex, 12 x 1.75 x 50mm, 10.9,Plt	each	2		
40 BTC12100	Bolt, Hex, 12 x 1.75 x 100mm, 10.9, Plt	each	2		
50 BTP08653	Bolt, Hex, 1/2-13unc, 6.5", 5, Plt, FT	each	1		
60 BTQ05075	Bolt, Hex, 5/16-18unc, .75", 8, Plt	each	4		
65 BTQ08126	Bolt, Hex, 1/2-20unf, 1.25", 8, Plt	each	10		
70 BTQ08151	Bolt, Hex, 1/2-20unf, 1.5", 8, Plt	each	2		
80 CSF08150	Capscrew, FH, 1/2-13 x 1.50", Alloy, Plt	each	2		
82 CSF08300	Capscrew, FH, 1/2-13 x 3", Alloy, Plt	each	2		
84 CSF10031	Capscrew, FH, 10 x 1.5 x 30mm, 10.9,Plt	each	2		
86 CSF10066	Capscrew, FH, 10 x 1.5 x 65mm, 10.9,Plt	each	2		
88 NTA12000	Nut, Hex, 12 x 1.75, 8.8, Plt	each	9		
90 NTP07000	Nut, Hex, 7/16-14unc, 5, Plt	each	4		
95 NTP08000	Nut, Hex, 1/2-13unc, 5, Plt	each	4		
100 SCP03075	Screw, PH, PD, SDT, #10-16 x .75, ST,Plt	each	3		
101 WFA10000	Washer, Flat, 10mm, 8.8, Plt	each	4		
105 WFA12000	Washer, Flat, 12mm, 8.8, Plt	each	16		
110 WFN05000	Washer, Flat, 5/16", 2, Plt	each	4		
115 WFN07000	Washer, Flat, 7/16", 2, Plt	each	4		
120 WFAQ08000	Washer, Flat, 1/2", 8, Plt	each	16		
130 WLA10000	Washer, Lock, 10mm, 8.8, Plt	each	4		
140 WLA12000	Washer, Lock, 12mm, 8.8, Plt	each	9		
150 WLP05000	Washer, Lock, 5/16", 5, Plt	each	4		
153 WLP07000	Washer, Lock, 7/16", 5, Plt	each	4		
155 WLP08000	Washer, Lock, 1/2", 5, Plt	each	17		

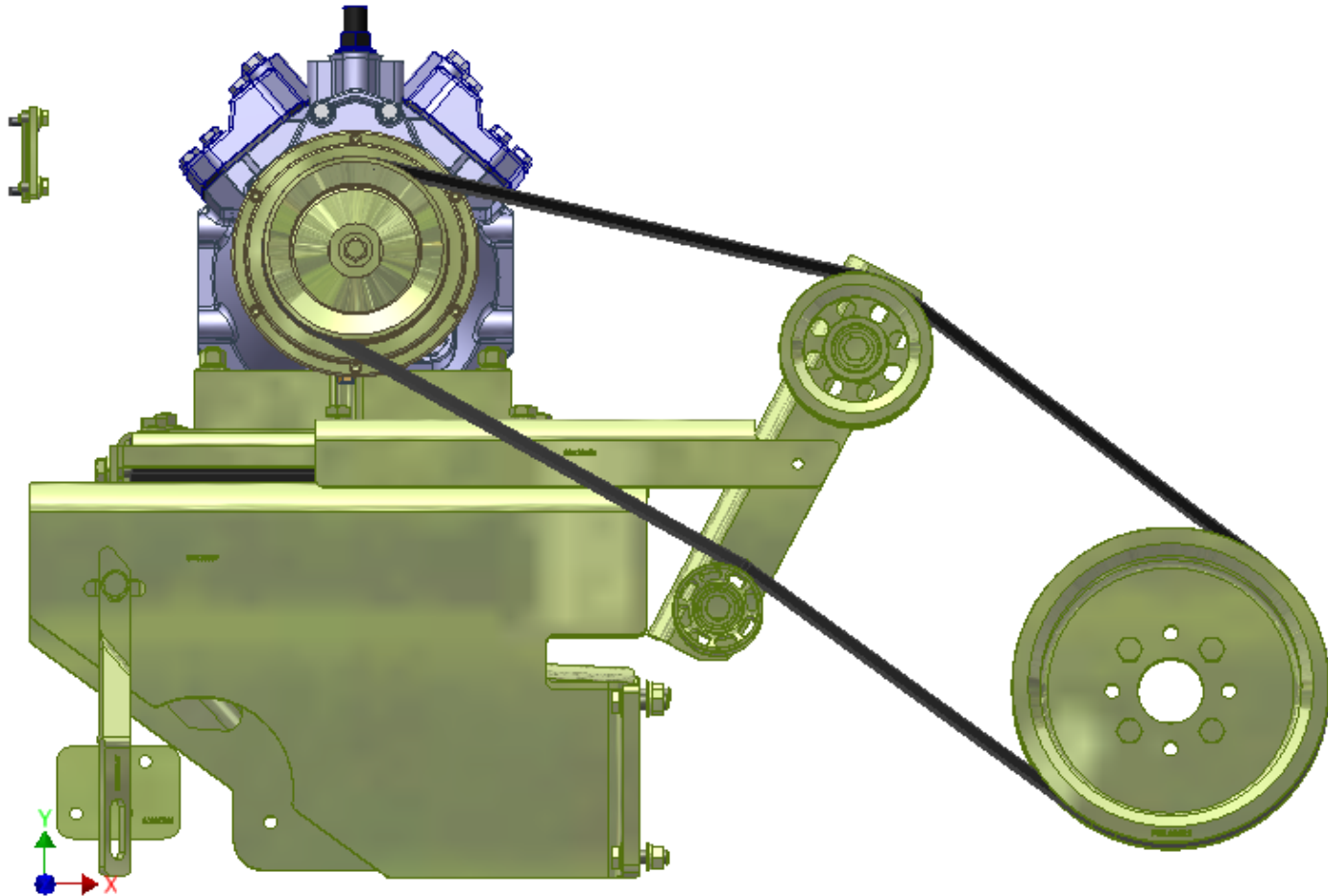
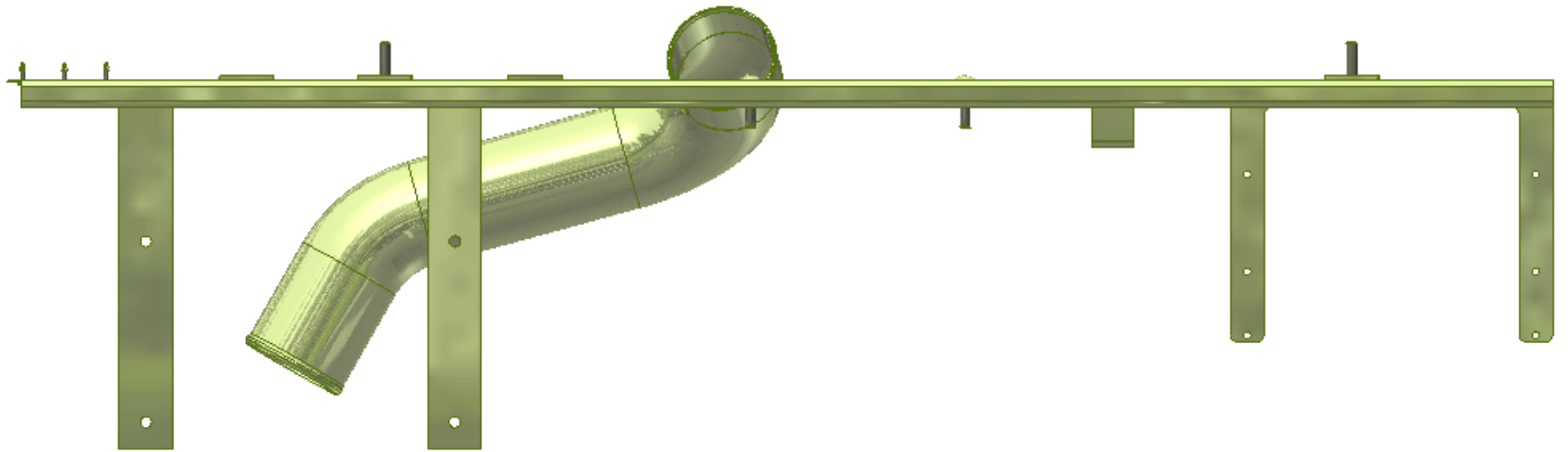


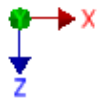
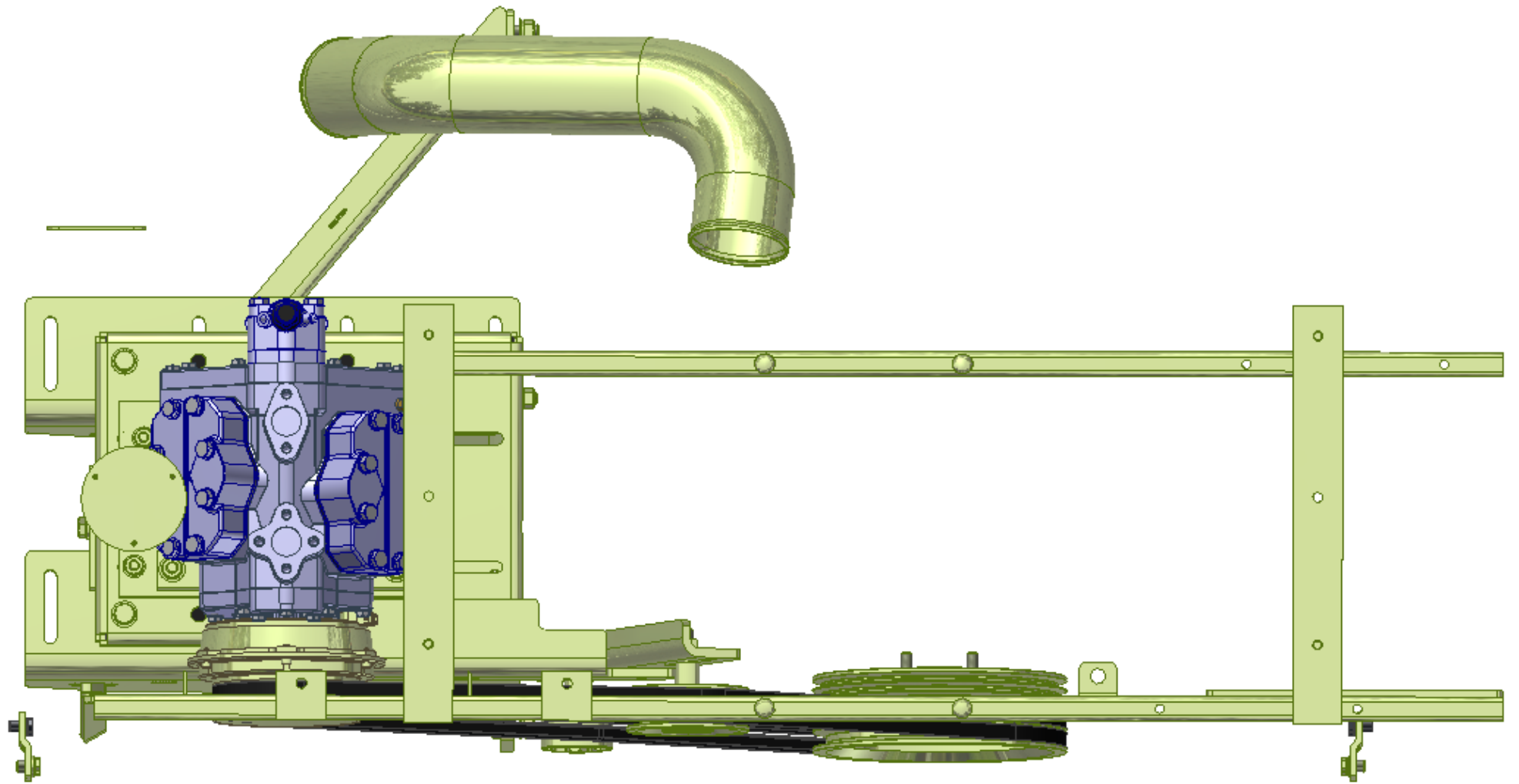
NOTES:
 1) USE SERVICABLE THREADLOCKER ON ALL FASTENERS TO ENGINE COMPONENTS AND TORQUE ALL BOLTS TO S.A.E. SPECIFICATIONS.
 2) SEE "TRANSARGTIC A/C COMPRESSOR MOUNT INSTALLATION DISCLAIMER".

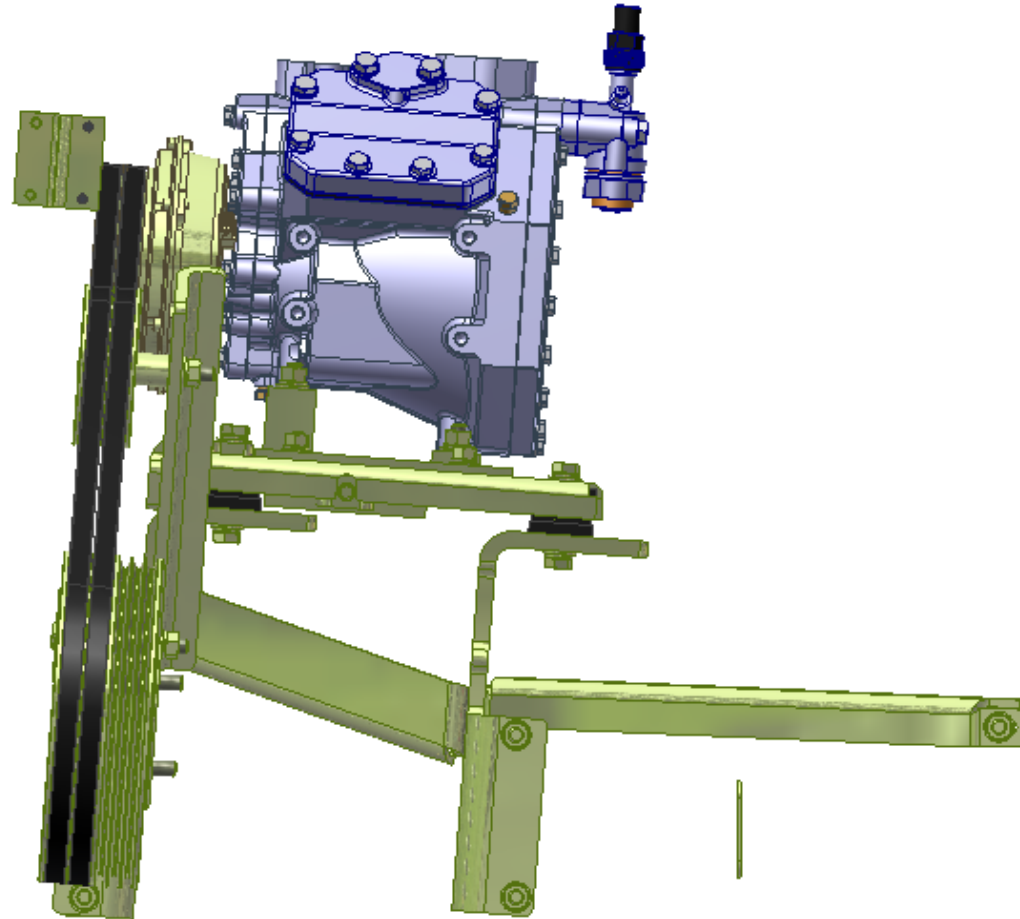
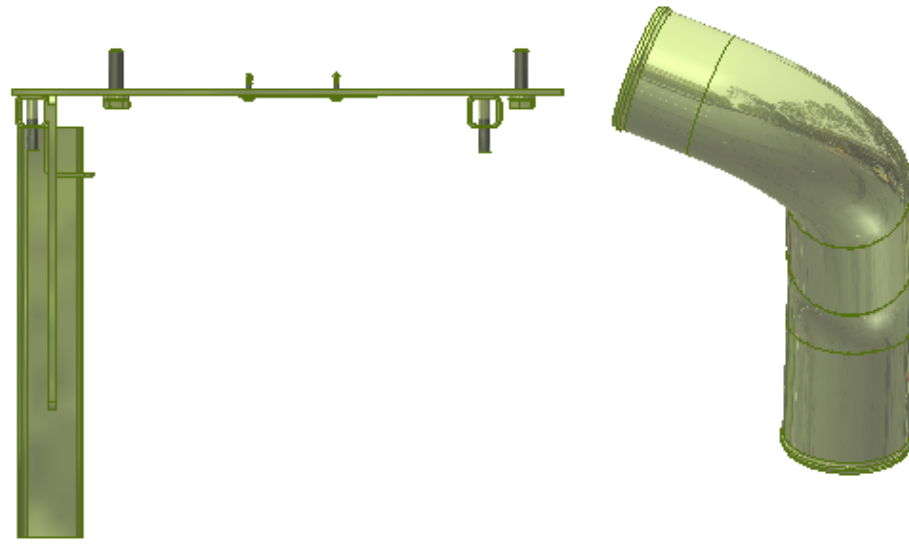
57	17	EACH	WLP08000	WASHER, LOCK, 1/2", 5, PLT
56	4	EACH	WLP07000	WASHER, LOCK, 7/16", 5, PLT
55	4	EACH	WLP05000	WASHER, LOCK, 5/16", PLT
54	9	EACH	WLA12000	WASHER, LOCK, 12mm, 8.8, PLT
53	4	EACH	WLA10000	WASHER, LOCK, 10mm, 8.8, PLT
52	16	EACH	WFO08000	WASHER, FLAT, 1/2", 8, PLT
51	4	EACH	WFO07000	WASHER, FLAT, 5/16", 2, PLT
50	4	EACH	WFO05000	WASHER, FLAT, 5/16", 2, PLT
49	16	EACH	WFA12000	WASHER, FLAT, 12mm, 8.8, PLT
48	4	EACH	WFA10000	WASHER, FLAT, 10mm, 8.8, PLT
47	1	EACH	TUS04095	TUBE, STL, EXH, 4" O.D., D3RE, ISC, 10
46	1	FEET	TUR00014	FTG. TUBING, PLASTIC, 1/4 O.D. BLACK
45	2	EACH	SLV17012	SLEEVE, PULLEY, 16.90 x 22.23 mm x 12.19
44	3	EACH	SCP03075	SCREW, PH, SDT, #10-16 x 75, ST, PLT
43	1	EACH	SCD41012	SPACER, COL, DRL, 41mm x 25.40 x 12.31
42	1	EACH	SCD37012	SPACER, COL, DRL, 37mm x 25.40 x 12.31
41	1	EACH	PUL89322	PULLEY, CRANK, ADD-ON, COMBO, ISL, 2B/3V
40	1	EACH	PUL80074	PULLEY, IDLER, BACKSIDE, PB, 74D, 46.27W
39	1	EACH	PJA05012	PULLEY, ASSY, IDLER, B/BX gr, 5" STL, PLT
38	4	EACH	NTP09000	NUT, HEX, 1/2-13UNC, 5, PLT
37	4	EACH	NTP07000	NUT, HEX, 7/16-14UNC, 5, PLT
36	9	EACH	NTA12000	NUT, HEX, 12 x 1.75, 8.8, PLT
35	1	EACH	HOA04083	HOSE, FLEX, CAC, 4.0d x 8.0, 3 RING
34	2	EACH	FTS06007	FTG. PIPE, ELBOW, 90 DEG, MALE
33	1	EACH	FTS06006	FTG. PIPE, ADAPTER, BULKHEAD, 1/8x1-1/2
32	2	EACH	CSF10066	CAPSCREW, FH, 10 x 1.5 x 65mm, 10.9, PLT
31	2	EACH	CSF10031	CAPSCREW, FH, 10 x 1.5 x 30mm, 10.9, PLT
30	2	EACH	CSF08300	CAPSCREW, FH, 3/8-16 x 3", 9, PLT
29	2	EACH	CSF08150	CAPSCREW, FH, 3/8-16 x 1.5", 9, PLT
28	2	EACH	CLP04000	CLAMP, T BOLT, SPRING, 4", CAC
27	2	EACH	BTQ08151	BOLT, HEX, 1/2-20UNF x 1.50, 8, PLT
26	10	EACH	BTQ08126	BOLT, HEX, 1/2-13UNC x 1.25, 8, PLT
25	4	EACH	BTQ05075	BOLT, HEX, 5/16-18UNC, 75", 8, PLT
24	1	EACH	BTP08653	BOLT, HEX, 1/2-13UNC x 6.50, 5, PLT, FT
23	2	EACH	BTC12100	BOLT, HEX, 12 x 1.75 x 100mm, 10.9, PLT
22	2	EACH	BTC12050	BOLT, HEX, 12 x 1.75 x 50mm, 10.9, PLT
21	4	EACH	BTC12040	BOLT, HEX, 12 x 1.75 x 40mm, 10.9, PLT
20	1	EACH	BTC12035	BOLT, HEX, 12 x 1.75 x 35mm, 10.9, PLT
19	4	EACH	BTC10040	BOLT, HEX, 10 x 1.5 x 40mm, 10.9, PLT
18	1	EACH	BMN80058	BKT, COMP, RR BAR, BITZER, RE300
17	1	EACH	BMN80057	BKT, COMP, FRT BAR, BITZER, RE300
16	1	EACH	BMN80032	BKT, ADAPTER, PL, IC, RE300
15	1	EACH	BMN80031	BKT, MAIN, SLIDE, ASSY, OSK, IC, RE300
14	1	EACH	BMN80025	BKT, BACK, PL, SLIDE, IC, RE300
13	1	EACH	BMN80009	BKT, MAIN, BASE, PL, IC, RE300
12	2	EACH	BMN80008	VIBRATION ISOLATOR, BAR, 16.50 x 2 x 1.50
11	1	EACH	BMC83075	BKT, PL, EXHAUST, ADAPTER, D3RE, 10
10	1	EACH	BMC83070	BKT, SUP, WELDMT, ISC, D3RE, 10
9	1	EACH	BMC83059	BKT, DIAG, BRACE FRT, MFD, RE300
8	1	EACH	BMC83058	BKT, COVER, LIGHT PL, MFD, RE300
7	1	EACH	BMC83057	BKT, MAIN, FR, PL, MFD, RE300
6	1	EACH	BMC83054	BKT, MAIN, IDLER, WELDMT, RE300
5	1	EACH	BMC83053	BKT, DIAG, BRACE RR, MFD, RE300
4	1	EACH	BMC83052	BKT, MAIN, RR PL, MFD, RE300
3	2	EACH	BMC83051	BKT, SIDE, EXTENTION, PLATE
2	1	EACH	BMC83047	BKT, BRACE, VERT, RR, BUMPER, ISC, D3
1	2	EACH	BEL2235	BELT, B Gr, 2235 mm (88") (BX85)

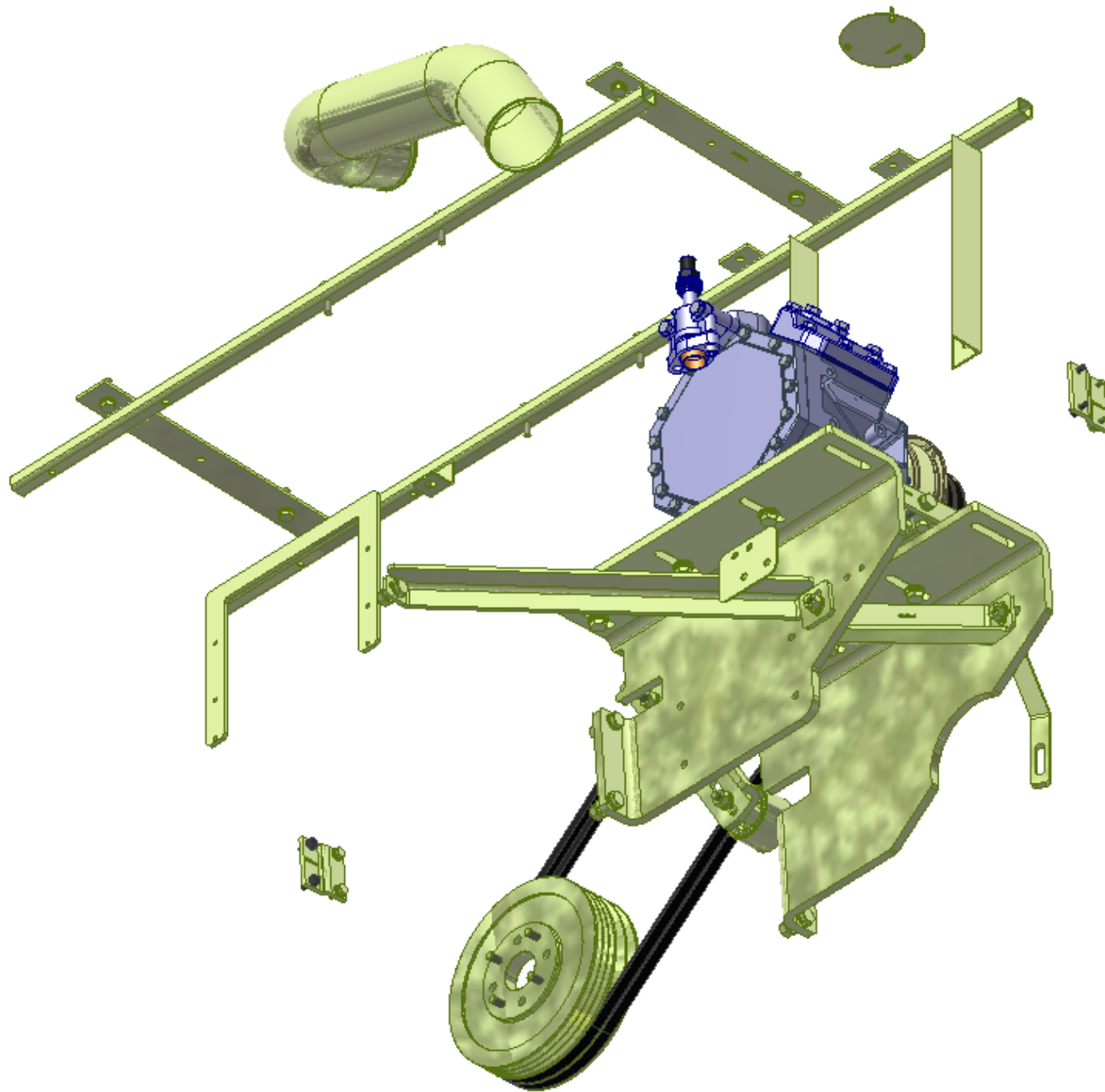
ITEM	QTY	U/M	PART NUMBER	DESCRIPTION
BILL OF MATERIALS				
DRAWN		1/6/2011		TRANSARGTIC INC.
Jrodriquez		1/6/2011		
CHECKED		1/6/2011		
James Stewart		1/6/2011		
REV: JCN		1/6/2011		TITLE
DESCRIPTION:		1/6/2011		
MFG		1/6/2011		
APPROVED		1/6/2011		MT KIT, ISC, D3RE F400, 8" CRANK, '10
Date Mason		1/6/2011		SIZE
UNSPECIFIED TOLERANCES:		1/6/2011		DWG NO
ONE DECIMAL PLACE (X.1)		.005		KMC82562
TWO DECIMAL PLACE (X.01)		.002		REV
THREE DECIMAL PLACE (X.001)		.001		0
FRACTIONAL (1/16")		.001		SCALE
ANGULAR (1/2°)		.001		1:8
				SHEET 1 OF 1











TransArctic A/C Compressor Mount Installation Disclaimer

All compressor mounts should be installed by qualified and trained personnel using proper tools and equipment in safe working conditions following industry standard guidelines for motor vehicle service and repair.

The installer of any compressor mount purchased from TransArctic must undertake all responsibility of issues arising from that compressor bracket being installed on any vehicle. As well as insure that a **proper and sufficient ground** is established between the compressors' clutches and the vehicle's engine. Mount functionality, operation and durability can all be compromised by an incompetent installation.

Due to the many different situations, parameters and application criteria, which are beyond the compressor mount manufacturer's control, TransArctic does not warrant design, durability, or operational functionality of any compressor mount improperly installed by another party.

With no implied guarantees it is the mount installer's strict responsibility to determine safety and functionality, of the compressor mount, at the time of installation.

Please contact TransArctic with any issue arising from installation so we may better improve the product. If you have any reservations about the compressor mount integrity contact TransArctic immediately at 1-877-COLD-AIR.

Mark OEM tensioner location

Install Kit

Check for Interferences

Check to ensure that the proper OEM tensioner orientation is maintained

Run engine with A/C system engaged for at least 10 minutes to run in belt

Check OEM tensioner orientation and adjust as required

Responsabilidad limitada de TransArctic en la instalación del soporte del compresor

Todos los soportes de los compresores deben ser instalados por personas calificadas y entrenadas, usando para ello los equipos y herramientas necesarios para esta labor en buenas condiciones y según las normas y guías para el servicio y/o reparación de motores de vehículos.

El instalador de los soportes comprados en TransArctic asume toda la responsabilidad de cualquier problema que surga en el soporte del compresor al vehículo; de igual manera es responsable que el cable a tierra sea conectado entre el embrague del compresor y el motor del vehículo.

Se advierte que el buen funcionamiento y la durabilidad del soporte pueden ser comprometidos por defectos en su instalación.

Debido a las diversas situaciones que se puedan presentar fuera del control del fabricante, TransArctic no garantiza el diseño, la durabilidad o el correcto funcionamiento de cualquier equipo inapropiadamente instalado por terceros.

Esta sobreentendido que el Instalador del montaje del compresor es estrictamente responsable de la seguridad y funcionamiento del equipo en el momento de la instalación.

Si tuviera algún problema o duda acerca de la instalación del soporte del compresor pongase en contacto inmediatamente con TransArctic al teléfono 1-877-COLD-AIR de modo que podamos mejorar nuestro producto.

Note la ubicación del medidor de tensión OEM

Instale el equipo

Controlar si hay interferencias.

Asegurese que el medidor de tensión mantenga la orientación justa.

Encienda el motor por lo menos 10 minutos con el sistema A/C enganchado para que la correa corra

Controle la orientación justa del medidor de tensión y ajuste a las condiciones requeridas del fabricante