

Bill of Materials Listing

TransArctic Canada Inc.

2/8/2022
Page 1 of 1

Product Number	Date	Description	Uof M	Weight	Yield		
Line	Qty	Component Prod#	Rev#	Description	Bin	Unit	
KMC96663	06/26/13	2 Mt Kit, ISL-G, T3RE, TM-65/55, 24V, '13				1139.27	0
10	1	BEL32210		Belt, Banded B gr,2210mm (87")		each	
50	1	BMC67096	0	Bkt, Diag Brace, DS, Frame Rail, T3RE		each	
60	1	BMC83054	5	Bkt, Main, Idler, Weldm't, RE300		each	
70	1	BMC83107	1	Bkt, Main, FRT Support, T3RE, '13		each	
80	1	BMC83109	0	Bkt, Main, Lateral Brace, T3RE, '13		each	
90	1	BMC90009	0	Bkt, Main, RR Support, CNG,T3RE, '13		each	
140	1	BMZ00046	0	Bkt, Angle, Brace, Hanger, Hose, 2013		each	
170	1	KCB65502	0	Kit, Compressor, D/S, 24v, TM-65/55, '16		each	
180	1	KIZ00001	1	Kit, Inst, Relocate PDU, Transit Mts		each	
190	1	PUA05012	0	Pulley, Assy, Idler,B/BX gr,5", STL,Plt		each	
210	1	PUL80074		Pulley, Idler, B/S, Wide, 74d (89102)		each	
220	1	PUL89322	1	Pulley, Crank,ADD-ON,Combo,ISC/L-G,2B/3V		each	
230	1	SCD46012	1	Spacer, Col, Drl, 46mm x 31.8o x 12.0i		each	
240	1	SCD49512	1	Spacer, Col, Drl, 49.48mmx 25.4o x 12.3i		each	
250	2	SLV17012	0	Sleeve, Pulley, 16.9o x 22.23mm x 12.32i		each	
270	1	KBC96663		Bag Kit, Fasteners, KMC96663		each	

Bill of Materials Listing

TransArctic Canada Inc.

2/8/2022
Page 1 of 1

Product Number	Date	Description	Uof M	Weight	Yield			
Line	Qty	Component Prod#	Rev#	Description	Bin	Unit	Weight	Yield
KBC96663	07/09/13	0		Bag Kit, Fasteners, KMC96663			2.49	0
40	5	BTC12040		Bolt, Hex, 12 x 1.75 x 40mm, 10.9,Plt,FT		each		
50	2	BTC12050		Bolt, Hex, 12 x 1.75 x 50mm, 10.9,Plt		each		
60	2	BTC12100		Bolt, Hex, 12 x 1.75 x 100mm, 10.9, Plt		each		
70	6	BTQ08126		Bolt, Hex, 1/2-20unf, 1.25", 8, Plt		each		
90	9	NTA12000		Nut, Hex, 12 x 1.75, 8.8, Plt		each		
180	16	WFA12000		Washer, Flat, 12mm, 8.8, Plt		each		
190	6	WFQ08000		Washer, Flat, 1/2", 8, Plt		each		
220	9	WLA12000		Washer, Lock, 12mm, 8.8, Plt		each		
230	6	WLQ08000		Washer, Lock, 1/2", 8, Plt		each		

Bill of Materials Listing

TransArctic Canada Inc.

11/1/2016
Page 1 of 1

Product Number	Description	Date	Weight	Uof M	Yield
Line Component Prod#	Description	Bin Unit	Qty		
KCB65502	Kit, Compressor, D/S, 24v, TM-65/55, '16		10/13/2016	78.70	0
10	BMN80008	Vibration Isolator, Bar,16.50 x 2 x 1.50	each	2	
20	BMN80025	Bkt, Back, PL, Slide, IC, RE300	each	1	
30	BMZ00043	Bkt, Main, Base Pl, '13	each	1	
40	KAC65502	Kit, Alternator, TM-65, Driver Side, '13	each	1	
50	KBT65501	Kit, Platform, P/S, TM-55/65, '16	each	1	
60	KBC65502	Bag Kit, Fasteners, KCB65502	each	1	

Bill of Materials Listing

TransArctic Canada Inc.

11/1/2016
Page 1 of 1

Product Number	Description	Date	Weight	Uof M	Yield
Line Component Prod#	Description	Bin Unit	Qty		
KBC65502	Bag Kit, Fasteners, KCB65502	10/31/2016	1.14		0
10	BTP08653	Bolt, Hex, 1/2-13unc, 6.5", 5, Plt, FT	each	1	
20	BTQ08101	Bolt, Hex, 1/2-20unf, 1.00", 8, Plt	each	3	
30	BTQ08126	Bolt, Hex, 1/2-20unf, 1.25", 8, Plt	each	2	
40	CSF08076	Capscrew, FH, 1/2-20unf x .75", Alloy, Plt	each	1	
50	WFQ08000	Washer, Flat, 1/2", 8, Plt	each	5	
60	WLQ08000	Washer, Lock, 1/2", 8, Plt	each	6	

Bill of Materials Listing

TransArctic Canada Inc.

2/8/2022
Page 1 of 1

Product Number	Date	Description		Uof M	Weight	Yield	
Line	Qty	Component Prod#	Rev#	Description	Bin	Unit	
KAC65502	08/11/16	3		Kit, Alternator, TM-65, Driver Side, '13		31.53	0
5	1	PAC12110		Pack, Carton, 12" x 11" x 5", 51 ECT		each	
10	2	BEL11040		Belt, A gr, 1040mm (41")		each	
20	1	BMC96663		1 Bkt, Main, Alt, Weldmt,ISL,TM-65/55,'13		each	
40	2	BMT10011		0 Bkt, Tenr, Block, Offset, 3mm		each	
50	1	PUL03321		1 Pulley, ALT, Idler, 3.25"d, 2A		each	
55	1	KBA84064		0 Bag Kit, ALT Shim, KC84064, KAC65501/02		each	
60	1	TRD08080		Threaded, Rod, 1/2-13unc x 8", 5, Plt		each	
70	1	KBA65502		0 Bag Kit, Fasteners, KAC65502			

NOTE:

1) Use KBA84064 "Shim bag kit", as required, to align the Alternator correctly.

Bill of Materials Listing

TransArctic Canada Inc.

2/8/2022
Page 1 of 1

Product Number	Date	Description			Uof M	Weight	Yield		
Line	Qty	Component	Prod#	Rev#	Description	Bin	Unit		
KBA65502	08/10/16	0	Bag Kit, Fasteners, KAC65502					1.52	0
10	4	BTC12035			Bolt, Hex, 12 x 1.75 x 35mm, 10.9,Plt,FT		each		
20	1	BTQ08150			Bolt, Hex, 1/2-13unc, 1.5", 8, Plt		each		
30	1	BTQ08200			Bolt, Hex, 1/2-13unc, 2.0", 8, Plt		each		
40	1	BTQ08653			Bolt, Hex, 1/2-13unc, 6.5", 8, Plt		each		
50	6	NTQ08000			Nut, Hex, 1/2-13unc, 8, Plt		each		
60	4	WFA12000			Washer, Flat, 12mm, 8.8, Plt		each		
70	4	WFQ08000			Washer, Flat, 1/2", 8, Plt		each		
80	4	WLA12000			Washer, Lock, 12mm, 8.8, Plt		each		
90	5	WLQ08000			Washer, Lock, 1/2", 8, Plt		each		

Bill of Materials Listing

TransArctic Canada Inc.

2/4/2022
Page 1 of 1

Product Number	Date	Description			Uof M	Weight	Yield	
Line	Qty	Component	Prod#	Rev#	Description	Bin	Unit	
KBA84064	10/19/21	0			Bag Kit, ALT Shim, KC84064, KAC65501/02		0.09	0
10	1	SCD03613		0	Spacer, Col, Drl, 3.56mm x 25.4o x12.7i	Alley	each	
20	2	WFA14000			Washer, Flat, 14mm, 8.8, Plt		each	
30	2	WFQ08000			Washer, Flat, 1/2", 8, Plt		each	

NOTE:

1) Use (1) SCD03613, (2) WFA14000, (2) WFQ08000, in any arrg'mt/qtys as required to align the Alternator correctly.

Bill of Materials Listing

TransArctic Canada Inc.

10/27/2016

Page 1 of 1

Product Number		Description	Bin	Date	Weight	Uof M	Yield
Line	Component Prod#	Description		Unit	Qty		
KBT65501		Kit, Platform, P/S, TM-55/65, '16		8/10/2016	16.62		0
10	BMN80031	Bkt, Main, Slide, Assy, 05K, IC, RE300		each	1		
20	BMZ00056	Bkt, Comp, FRT, Z, TM-65/55, '13		each	1		
30	BMZ00057	Bkt, Comp, Rear, Z, TM-65/55, '13		each	1		
40	KBZ65501	Bag Kit, Fasteners, KBT65501		each	1		

Bill of Materials Listing

TransArctic Canada Inc.

10/27/2016
Page 1 of 1

Product Number	Description	Date	Weight	Uof M	Yield
Line Component Prod#	Description	Bin Unit	Qty		
KBZ65501	Bag Kit, Fasteners, KBT65501	8/10/2016	0.69		0
10	BTC12035				
	Bolt, Hex, 12 x 1.75 x 35mm, 10.9,Plt,FT	each	4		
20	NTP07000				
	Nut, Hex, 7/16-14unc, 5, Plt	each	4		
30	WFA12000				
	Washer, Flat, 12mm, 8.8, Plt	each	4		
40	WFN07000				
	Washer, Flat, 7/16", 2, Plt	each	4		
50	WLA12000				
	Washer, Lock, 12mm, 8.8, Plt	each	4		
60	WLQ07000				
	Washer, Lock, 7/16", 8, Plt	each	4		

Bill of Materials Listing

TransArctic Canada Inc.

11/1/2016
Page 1 of 1

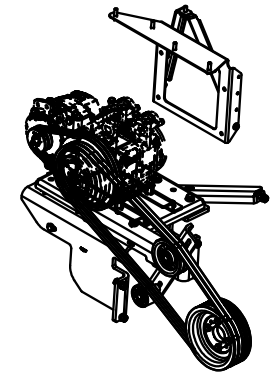
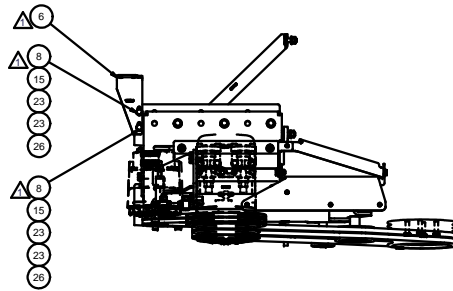
Product Number		Description	Bin	Date	Weight	Uof M	Yield
Line	Component Prod#	Description		Unit	Qty		
KIZ00001		Kit, Inst, Relocate PDU, Transit Mts		6/11/2014	10.38		0
10	BMC67093	Bkt, Fuse Panel, Vert., ISB, T3RE		each	1		
20	BMC67094	Bkt, Diag, Brace DS, Fuse Panel, T3RE		each	1		
30	BMC67095	Bkt, Diag, Brace PS, Fuse Panel, T3RE		each	1		
40	KBZ00001	Bag Kit, Fasteners, KIZ00001		each	1		

Bill of Materials Listing

TransArctic Canada Inc.

11/1/2016
Page 1 of 1

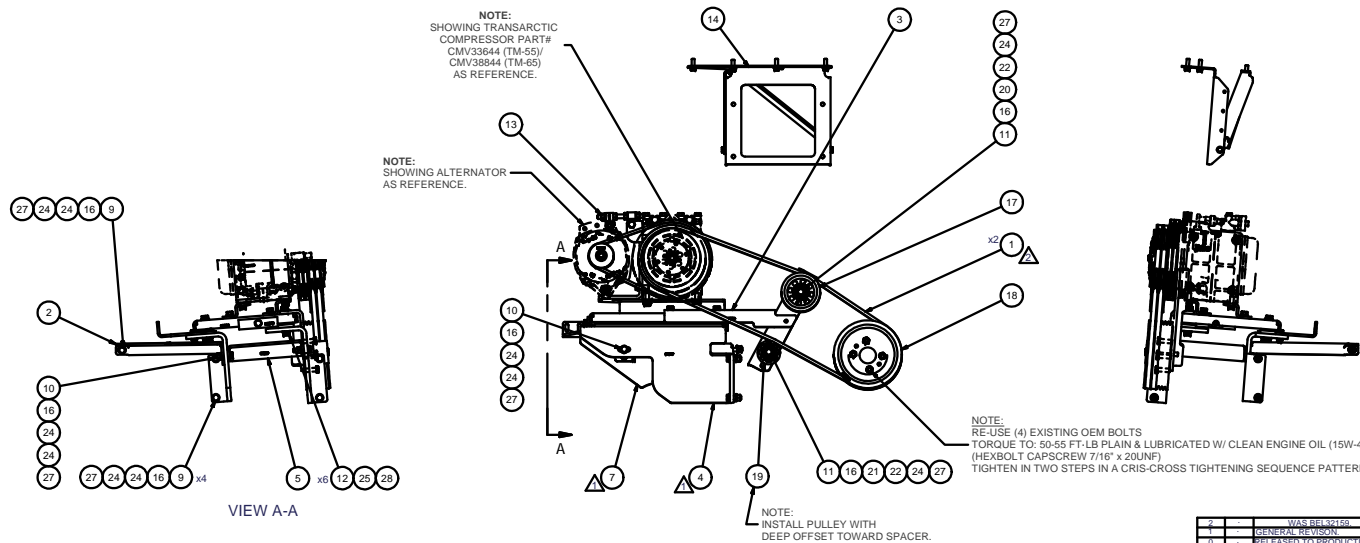
Product Number	Description	Date	Weight	Uof M	Yield
Line Component Prod#	Description	Bin Unit	Qty		
KBZ00001	Bag Kit, Fasteners, KIZ00001		11/7/2014	0.55	0
10	BTQ06100		Bolt, Hex, 3/8-16unc, 1", 8, Plt	each	2
20	BTQ06125		Bolt, Hex, 3/8-16unc, 1.25", 8, Plt	each	5
30	NTQ06000		Nut, Hex, 3/8-16unc, 8, Plt	each	2
40	WFN06000		Washer, Flat, 3/8", 2, Plt	each	9
50	WLQ06000		Washer, Lock, 3/8", 8, Plt	each	7



ISOMETRIC VIEW

NOTE:
SHOWING TRANSARCTIC
COMPRESSOR PART#
CMV33644 (TM-55)/
CMV38844 (TM-65)
AS REFERENCE.

NOTE:
SHOWING ALTERNATOR
AS REFERENCE.



NOTE:
RE-USE (4) EXISTING OEM BOLTS
TORQUE TO: 50-55 FT.-LB PLAIN & LUBRICATED W/ CLEAN ENGINE OIL (15W-40)
(HEXBOLT CAPSCREW 7/16" x 20UNF)
TIGHTEN IN TWO STEPS IN A CRIS-CROSS TIGHTENING SEQUENCE PATTERN.

NOTE:
INSTALL PULLEY WITH
DEEP OFFSET TOWARD SPACER.

NOTES:
1) USE SERVICABLE THREADLOCKER ON ALL FASTENERS TO ENGINE COMPONENTS AND TORQUE ALL BOLTS TO S.A.E. SPECIFICATIONS.
2) SEE "TRANSARCTIC A/C COMPRESSOR MOUNT INSTALLATION DISCLAIMER".

ITEM	QTY	U/M	PART NUMBER	DESCRIPTION
28	6	EACH	WLO08000	WASHER LOCK, 1/2", 8, PLT
27	9	EACH	WLA12000	WASHER LOCK, 12mm, 8.8, PLT
26	2	EACH	WLA10000	WASHER LOCK, 10mm, 8.8, PLT
25	6	EACH	WFO08000	WASHER, FLAT, 1/2", 8, PLT
24	16	EACH	WFA12000	WASHER, FLAT, 12mm, 8.8, PLT
23	4	EACH	WFA10000	WASHER, FLAT, 10mm, 8.8, PLT
22	2	EACH	SLV17012	SLEEVE, PULLEY, 16.90 x 22.23 mm x12.19l
21	1	EACH	SCD49512	SPACER, COL, DRL, 49.48mm x 25.40 x 12.3
20	1	EACH	SCD46012	SPACER, COL, DRL, 46mm x 31.80 x 12.0l
19	1	EACH	PUL80074	PULLEY, IDLER, BACKSIDE, PG, 74D, 46.27W
18	1	EACH	PUL67323	PULLEY, CRANK, ADD-ON, COMBO, ISB, 2B/3V
17	1	EACH	PUA05012	PULLEY, ASSY, IDLER, B/BX qr, 5" STL, PLT
16	9	EACH	NTA12000	NUT, HEX, 12 x 1.75, 8.8, PLT
15	2	EACH	NTA10000	NUT, HEX, 10 x 1.5, 8.8, PLT
14	1	EACH	KIZ00001	KIT, INST, RELOCATE PDU, TRANSIT MTS
13	1	EACH	KCB65502	KIT, COMPRESSOR, D/S, 24V, TM-65/55, '16
12	6	EACH	BTC08126	BOLT, HEX, 1/2-20UNF x 1.25, 8, PLT
11	2	EACH	BTC12100	BOLT, HEX, 12 x 1.75 x 100mm, 10.9, PLT
10	2	EACH	BTC12050	BOLT, HEX, 12 x 1.75 x 50mm, 10.9, PLT
9	5	EACH	BTC12040	BOLT, HEX, 12 x 1.75 x 40mm, 10.9, PLT
8	2	EACH	BTC10035	BOLT, HEX, 10 x 1.5 x 35mm, 10.9, PLT
7	1	EACH	BMC90009	BKT, MAIN, RR SUPPORT, CNG, T3RE, '13
6	1	EACH	BMC83122	BKT, EXHAUST, ADAPTER, T3RE, '13
5	1	EACH	BMC83109	BKT, MAIN, LATERAL BRACE, T3RE, '13
4	1	EACH	BMC83107	BKT, MAIN, FRT SUPPORT, T3RE, '13
3	1	EACH	BMC83054	BKT, MAIN, IDLER, WELDMT, RE300
2	1	EACH	BMC67096	BKT, DIAG BRACE, DS, FRAME RAIL, T3RE
1	2	EACH	BEL22159	BELT, B GR, 2159mm (85")

BILL OF MATERIALS

DRAWN: vjakovlew 4/18/2016
 CHECKED: Jose Rodriguez 4/18/2016
 RELEASED TO PRODUCTION: 4/18/2016
 REV: 1 BY: James Stewart 4/18/2016
 APPROVED: Dale Mason 4/18/2016

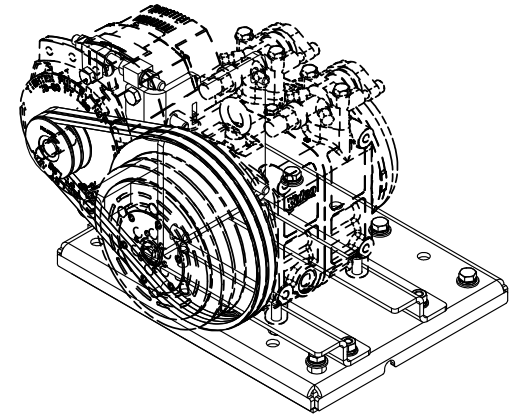
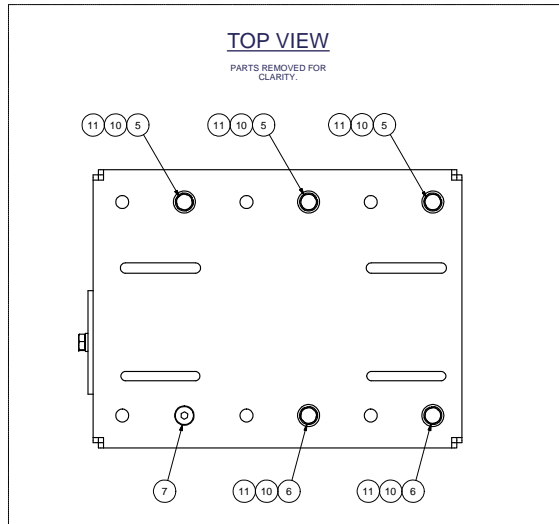
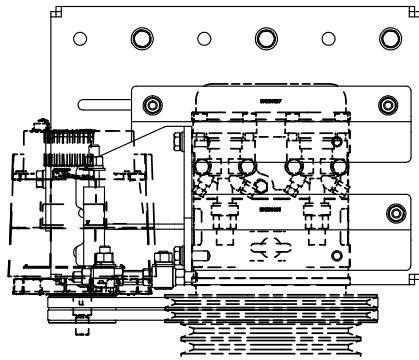
TRANSARCTIC INC.

TITLE: MT KIT, ISB, T3RE, TM-65/55, 24V, '13+

SIZE: D DWG NO: KMC66663 REV: 2
 SCALE: 1:1 DRAWING UNIT OF MEASURE: MM (INCH)

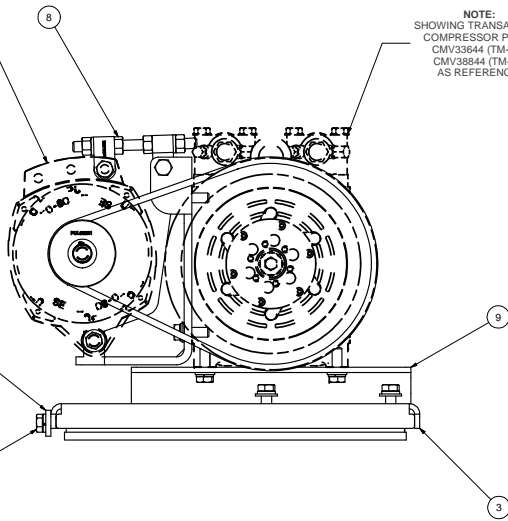
UNSPECIFIED TOLERANCES:	PLT (DIM)
ONE DECIMAL PLACE (X.0)	±.005
TWO DECIMAL PLACES (X.00)	±.002
THREE DECIMAL PLACES (X.000)	±.001
FRACTIONAL (1/16")	±.005

THIRD ANGLE PROJECTION

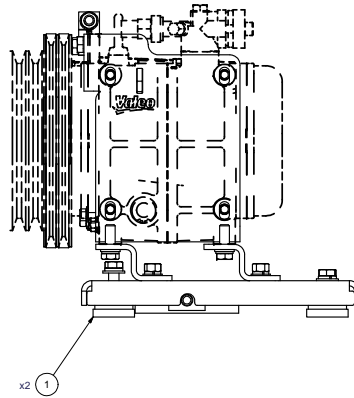


ISOMETRIC VIEW

NOTE:
SHOWING ALTERNATOR
AS REFERENCE.



NOTE:
SHOWING TRANSARCTIC
COMPRESSOR PART#
CMV33644 (TM-65)/
CMV38844 (TM-65)
AS REFERENCE.



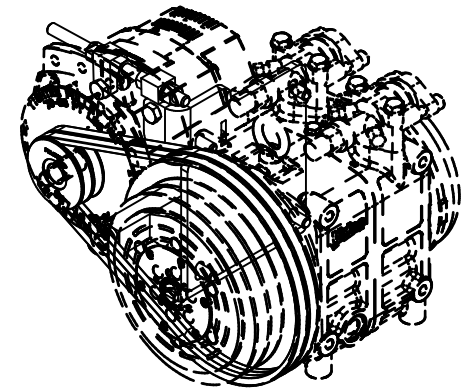
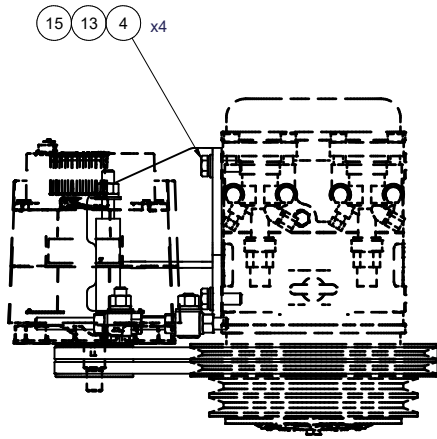
NOTES:

- 1) USE SERVICABLE THREADLOCKER ON ALL FASTENERS TO ENGINE COMPONENTS AND TORQUE ALL BOLTS TO S.A.E. SPECIFICATIONS.
- 2) SEE "TRANSARCTIC A/C COMPRESSOR MOUNT INSTALLATION DISCLAIMER".
- 3) WEIGHT: 68.75LBS.

ITEM	QTY	U/M	PART NUMBER	DESCRIPTION
11	6	EACH	WLO08000	WASHER, LOCK, 1/2", 8, PLT
10	5	EACH	WFO08000	WASHER, FLAT, 1/2", 8, PLT
9	1	EACH	KBT65501	KIT, PLATFORM, P/S, TM-55/65, '16
8	1	EACH	KAC65502	KIT, ALTERNATOR, TM-65, DRIVER SIDE, '13
7	1	EACH	CSF08076	CAPSCREW, FH, 1/2-20UNF x .75", ALLOY, PLT
6	2	EACH	BTQ08126	BOLT, HEX, 1/2-20UNF x 1.25, 8, PLT
5	3	EACH	BTQ08101	BOLT, HEX, 1/2-20UNF x 1.00, 8, PLT
4	1	EACH	BTPO8653	BOLT, HEX, 1/2-13UNC x 6.50, 5, PLT, FT
3	1	EACH	BMZ00043	BKT, MAIN, BASE PL, '13
2	1	EACH	BMN80025	BKT, BACK, PL, SLIDE, IC, RE300
1	2	EACH	BMN80008	VIBRATION ISOLATOR, BAR, 1x.50 x 2 x 1.50

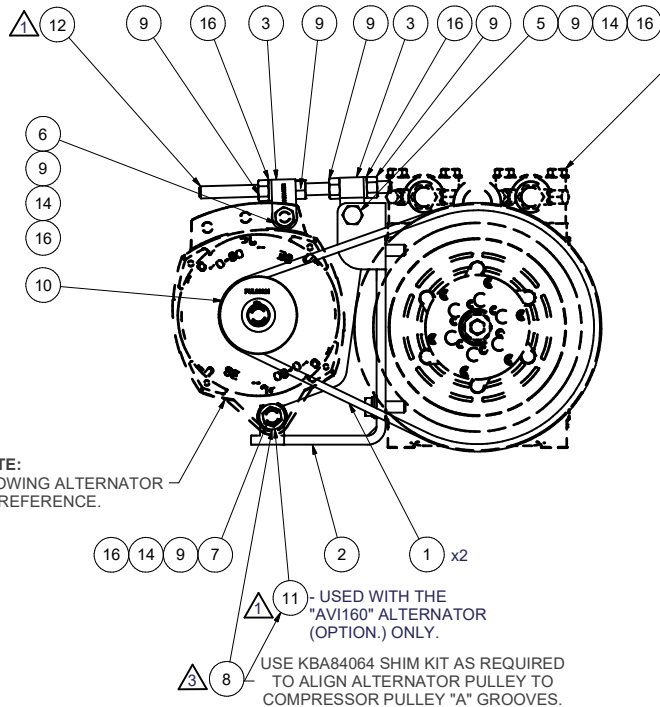
BILL OF MATERIALS
TRANSARCTIC INC.

DRAWN	Jrodriguez	10/13/2016	CHECKED	Vai Jakowlew	10/13/2016	TITLE	
REV	ECN	DESCRIPTION	DATE	BY	DATE		
		RELEASED TO PRODUCTION	10/13/2016	JR	10/13/2016		
				James Stewart	10/13/2016		
				MFS	10/13/2016		
				James Stewart	10/13/2016		
				APPROVED	10/13/2016		
				Dale Mason	10/13/2016		
UNSPECIFIED TOLERANCES:		ALL DIMS					
ONE DECIMAL PLACE	(.1)	FR					
TWO DECIMAL PLACES	(.01)	FR					
THREE DECIMAL PLACES	(.001)	FR					
FRACTIONAL	(1/32)	ANGULAR	(.25)				
		THIRD ANGLE PROJECTION					
		DRAWING UNIT OF MEASURE:	MM (INCH)				
		SCALE:	1:3				
		DWG NO	KCB65502				
		REV	0				
		SHEET	1	OF	1		

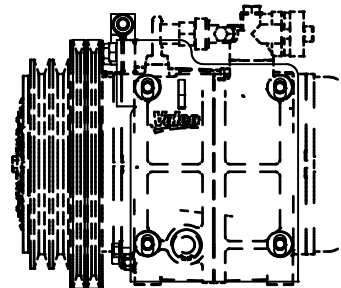


ISOMETRIC VIEW

NOTE:
SHOWING TRANSARCTIC
COMPRESSOR PART#
CMV33644 (550cc)/
CMV38844 (635cc)
AS REFERENCE.



NOTE:
SHOWING ALTERNATOR
AS REFERENCE.



NOTES:

- 1) USE SERVICABLE THREADLOCKER ON ALL FASTENERS TO ENGINE COMPONENTS AND TORQUE **ALL** BOLTS TO S.A.E. SPECIFICATIONS.
- 2) SEE "TRANSARCTIC A/C COMPRESSOR MOUNT INSTALLATION DISCLAIMER".
- 3) WEIGHT: 18.11 LB

16	5	EACH	WLVQ08000	WASHER, LOCK, 1/2", 8, PLT
15	4	EACH	WLA12000	WASHER, LOCK, 12mm, 8.8, PLT
14	4	EACH	WFO08000	WASHER, FLAT, 1/2", 8, PLT
13	4	EACH	WFA12000	WASHER, FLAT, 12mm, 8.8, PLT
12	1	EACH	TRD08080	THREADED, ROD, 1/2-13UNC x 8", 5 PLT
11	1	EACH	SCD05513	SPACER, COL, DRL, 5.51mm x 25.4o x 12.7i
10	1	EACH	PUL03321	PULLEY, ALT, IDLER, 3.25"o, 2A
9	7	EACH	NTQ08000	NUT, HEX, 1/2-13UNC, 8, PLT
8	1	EACH	KBA84064	BAG KIT, ALT SHIM, KC84064, KAC65501/02
7	1	EACH	BTQ08653	BOLT, HEX, 1/2-13UNC x 6.50, 8, PLT
6	1	EACH	BTQ08200	BOLT, HEX, 1/2-13UNC x 2.00, 8, PLT
5	1	EACH	BTQ08150	BOLT, HEX, 1/2-13UNC x 1.50, 8, PLT
4	4	EACH	BTC12035	BOLT, HEX, 12 x 1.75 x 35mm, 10.9, PLT
3	2	EACH	BMT10011	BKT, TENR, BLOCK, OFFSET, 3mm
2	1	EACH	BMC96663	BKT, MAIN, ALT, WELDM'T, ISL, TM-65/55, '13
1	2	EACH	BEL11118	BELT, A gr, 1040mm (41")
ITEM	QTY	U/M	PART NUMBER	DESCRIPTION

BILL OF MATERIALS

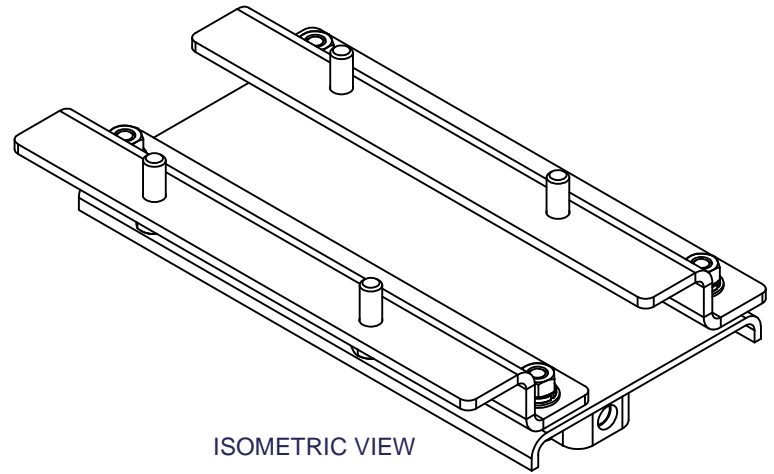
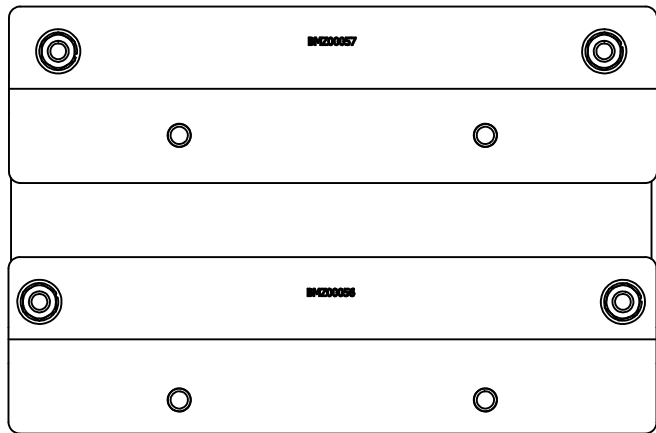
DRAWN	vjakowlew	10/04/16
CHECKED	Jose Rodriguez	10/04/16
QA	James Stewart	10/4/2016
MFG	James Stewart	10/04/16
APPROVED	Dale Mason	10/04/16

TRANSARCTIC INC.

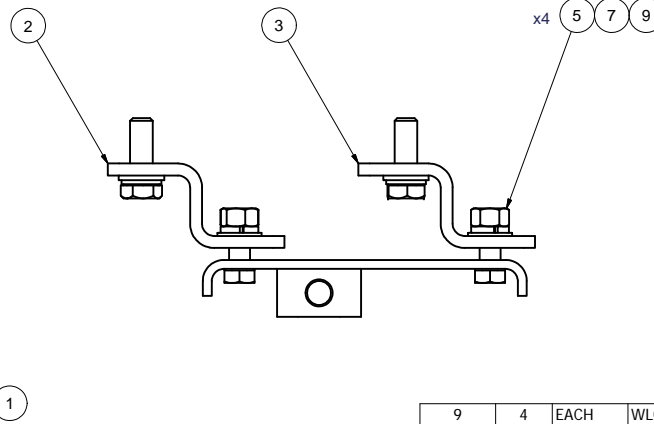
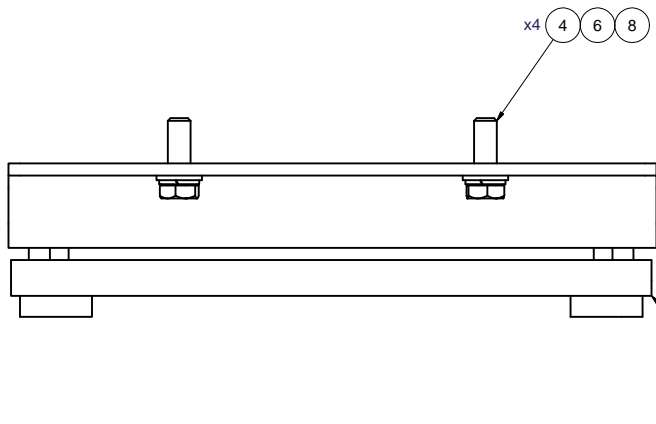
TITLE
KIT, ALTERNATOR, TM-65, DRIVER
SIDE, '13

SIZE	C	DWG NO	KAC65502	REV	3
SCALE	1:4	SHEET	1	OF	1

3	ADDED KBA84064 SHIM BAG KIT.	02/03/2022	VALJ	
2	WAS KBA96663 FASTENER BAG KIT.	10/11/2021	JRR	
1	WAS TRD08060 ADDED SCD05513	05/11/2021	VALJ	
0	RELEASED TO PRODUCTION.	10/4/2016	JRR	
REV:	ECN:	DESCRIPTION:	DATE:	BY:
THIS DRAWING CONTAINS PROPRIETARY CONFIDENTIAL INFORMATION OWNED BY TRANSARCTIC CANADA INC. THE DOCUMENT AND THE INFORMATION IN IT ARE NOT TO BE USED, DISCLOSED OR REPRODUCED WITHOUT EXPRESS WRITTEN PERMISSION OF THE COMPANY.				
UNSPECIFIED TOLERANCES: [ALT. DIM.]				
ONE DECIMAL PLACE (X)	MM	(INCH)		
TWO DECIMAL PLACE (XX)	.25	(.010)		
THREE DECIMAL PLACE (XXX)	.10	(.005)		
FRACTIONAL +/- .002"	ANGULAR +/- .50°			
		THIRD ANGLE PROJECTION		
		DRAWING UNIT OF MEASURE: MM [INCH]		



ISOMETRIC VIEW



NOTES:

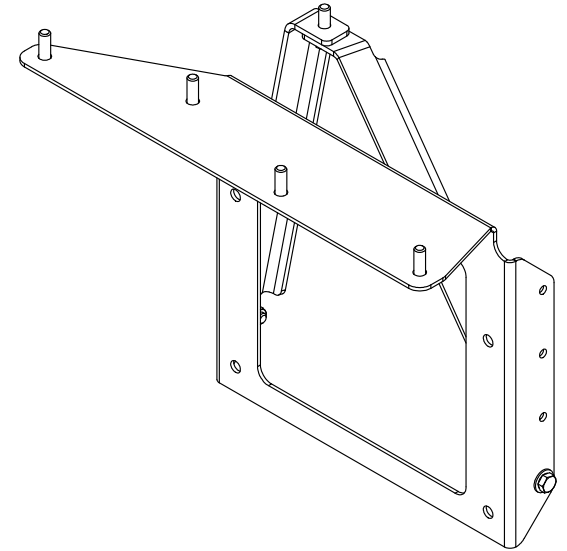
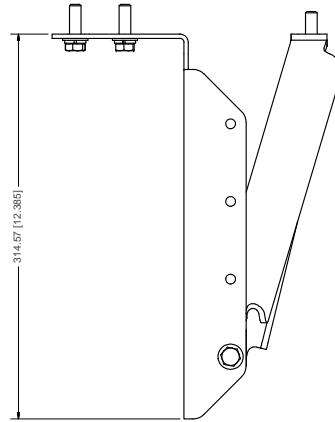
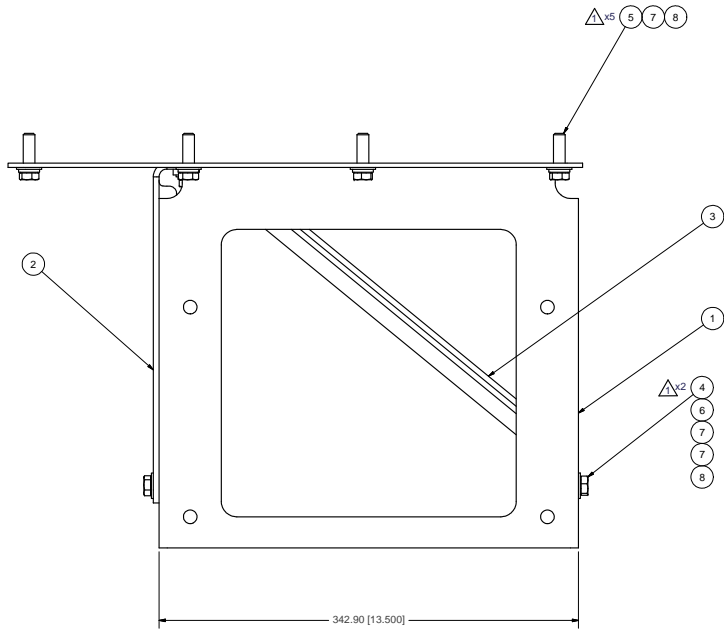
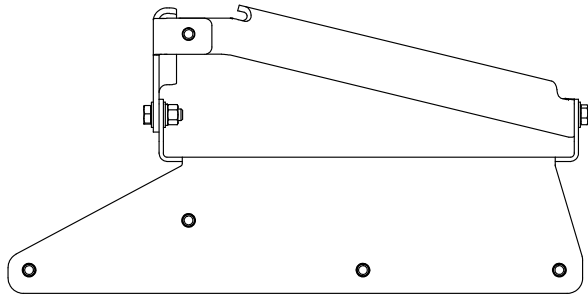
- 1) USE SERVICABLE THREADLOCKER ON ALL FASTENERS TO ENGINE COMPONENTS AND TORQUE **ALL** BOLTS TO S.A.E. SPECIFICATIONS.
- 2) SEE "TRANSARCTIC A/C COMPRESSOR MOUNT INSTALLATION DISCLAIMER".
- 3) WEIGHT: 16.47 LBS.

ITEM	QTY	U/M	PART NUMBER	DESCRIPTION
9	4	EACH	WLQ07000	WASHER, LOCK, 7/16", 8, PLT
8	4	EACH	WLA12000	WASHER, LOCK, 12mm, 8.8, PLT
7	4	EACH	WFN07000	WASHER, FLAT, 7/16", 2, PLT
6	4	EACH	WFA12000	WASHER, FLAT, 12mm, 8.8, PLT
5	4	EACH	NTP07000	NUT, HEX, 7/16-14UNC, 5, PLT
4	4	EACH	BTC12035	BOLT, HEX, 12 x 1.75 x 35mm, 10.9, PLT
3	1	EACH	BMZ00057	BKT, COMP, REAR, Z, TM-65/55, '13
2	1	EACH	BMZ00056	BKT, COMP, FRT, Z, TM-65/55, '13
1	1	EACH	BMN80031	BKT, MAIN, SLIDE, ASSY, 05K, IC, RE300

BILL OF MATERIALS

DRAWN	jrodriguez	8/8/2016	TRANSARCTIC INC.
CHECKED	Val Jakowlew	8/8/2016	
APPROVED	James Stewart	8/8/2016	
MFG	James Stewart	8/8/2016	
TITLE			KIT, PLATFORM, P/S, TM-55/65, '16
DRAWING UNIT OF MEASURE:			
SIZE	C	DWG NO	REV
SCALE	1:2	KBT65501	0
SHEET 1 OF 1			

0	-	RELEASED TO PRODUCTION	8/8/2016	JRR
REV	ECN	DESCRIPTION	DATE	BY
<small>THIS DRAWING CONTAINS PROPRIETARY CONFIDENTIAL INFORMATION OWNED BY TRANSARCTIC CANADA INC. THE DOCUMENT AND THE INFORMATION IN IT ARE NOT TO BE USED, DISCLOSED OR REPRODUCED WITHOUT EXPRESS WRITTEN PERMISSION OF THE COMPANY.</small>				
<small>UNSPECIFIED TOLERANCES: (ALT. DIM.)</small>				
ONE DECIMAL PLACE (.X)	MM	(.020)	 THIRD ANGLE PROJECTION	
TWO DECIMAL PLACE (.XX)	MM	(.010)		
THREE DECIMAL PLACE (.XXX)	MM	(.005)		
FRACTIONAL +/- 1/32"	ANGULAR	+/- .50°		



ISOMETRIC VIEW

NOTES:

- 1) USE SERVICABLE THREADLOCKER ON ALL FASTENERS TO ENGINE COMPONENTS AND TORQUE ALL BOLTS TO S.A.E. SPECIFICATIONS.
- 2) SEE "TRANSARCTIC A/C COMPRESSOR MOUNT INSTALLATION DISCLAIMER".

ITEM	QTY	U/M	PART NUMBER	DESCRIPTION
8	7	EACH	WLO06000	WASHER, LOCK, 3/8", 8, PLT
7	9	EACH	WFO06000	WASHER, FLAT, 3/8", 2, PLT
6	2	EACH	NTQ06000	NUT, HEX, 3/8-16UNC, 8, PLT
5	5	EACH	BTQ06125	BOLT, HEX, 3/8-16UNC x 1.25, 8, PLT
4	2	EACH	BTQ06100	BOLT, HEX, 3/8-16UNC, 1", 8, PLT
3	1	EACH	BMC67095	BKT. DIAG. BRACE PS, FUSE PANEL, T3RE
2	1	EACH	BMC67094	BKT. DIAG. BRACE DS, FUSE PANEL, T3RE
1	1	EACH	BMC67093	BKT. FUSE PANEL, VERT., ISB, T3RE

BILL OF MATERIALS
TRANSARCTIC INC.

1	WAS METRIC FASTENERS	3/1/2016	JRR	Val Jakowlew	11/7/2014
2	RELEASED TO PRODUCTION	11/7/2014	JRR	GA	11/7/2014
REV	ECN	DESCRIPTION	DATE	BY	
				James Stewart	11/7/2014
				Ron Ingram	11/7/2014
				Date Mason	11/7/2014

THIS DRAWING CONTAINS PROPRIETARY CONFIDENTIAL INFORMATION OWNED BY TRANSARCTIC CANADA INC. THE DOCUMENT AND THE INFORMATION IN IT ARE NOT TO BE USED, DISCLOSED OR REPRODUCED WITHOUT EXPRESS WRITTEN PERMISSION OF THE COMPANY.

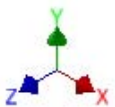
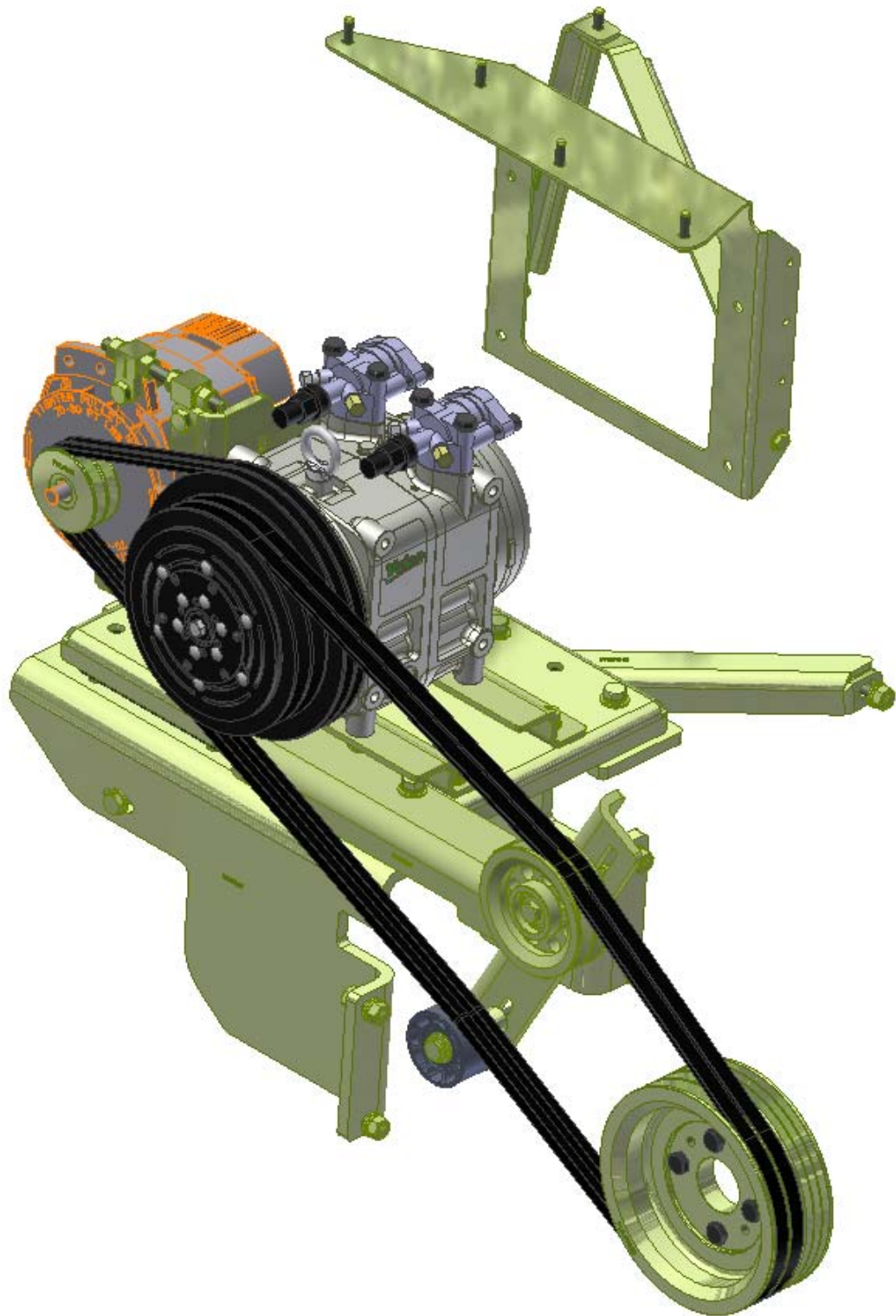
UNSPECIFIED TOLERANCES:		MM (INCH)
ONE DECIMAL PLACE (.X)	±.05 (±.002)	
TWO DECIMAL PLACE (.XX)	±.02 (±.001)	
THREE DECIMAL PLACE (.XXX)	±.01 (±.0005)	
FRACTIONAL (1/16")	±.01 (±.0005)	
ANGULAR	±.25	

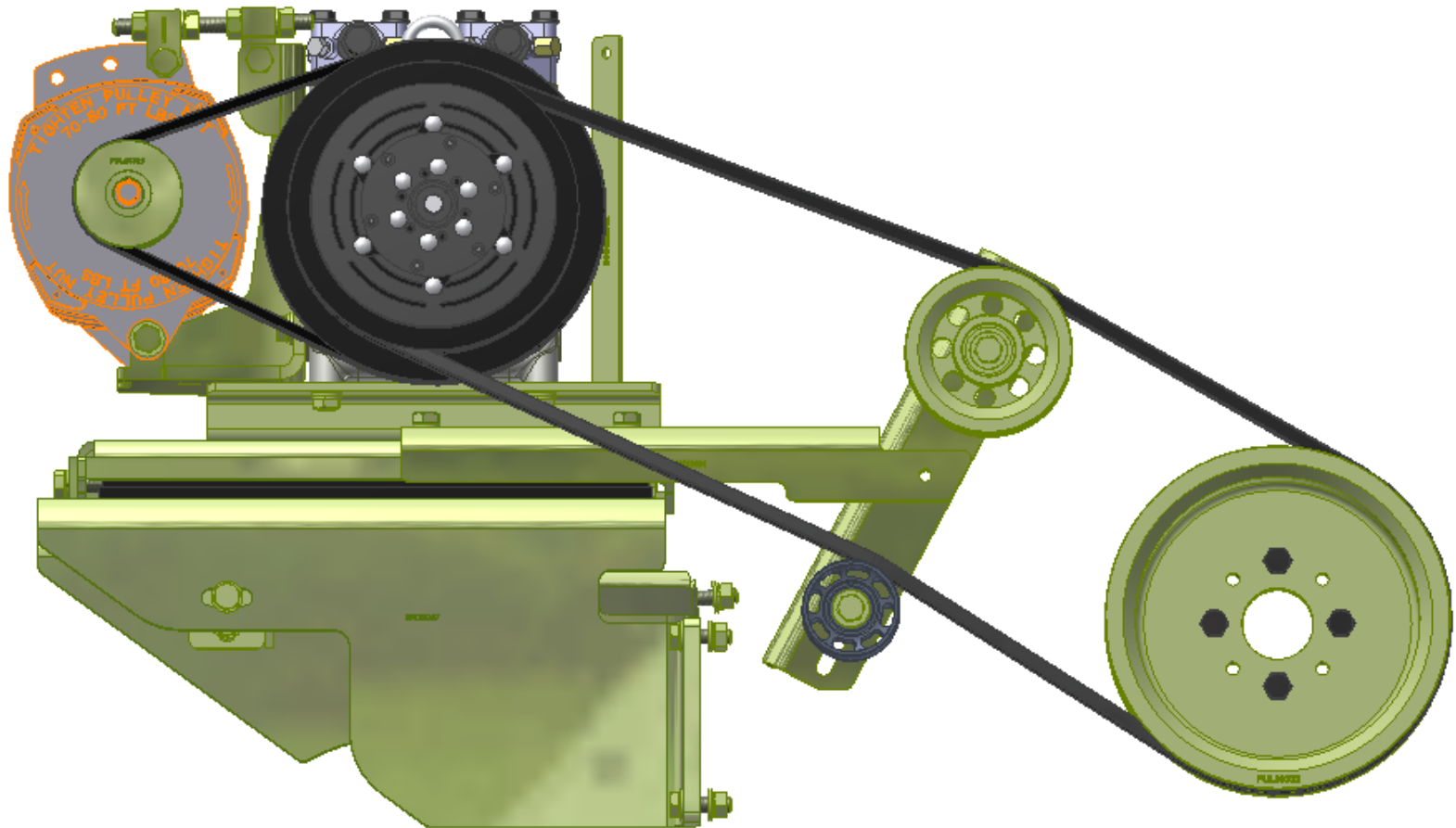
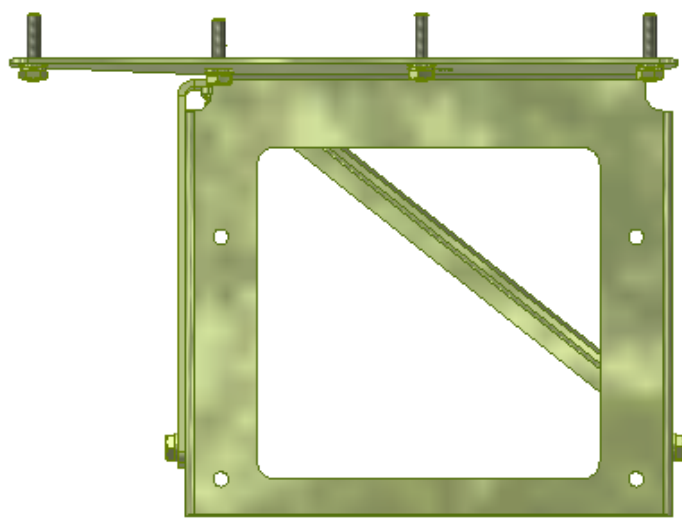


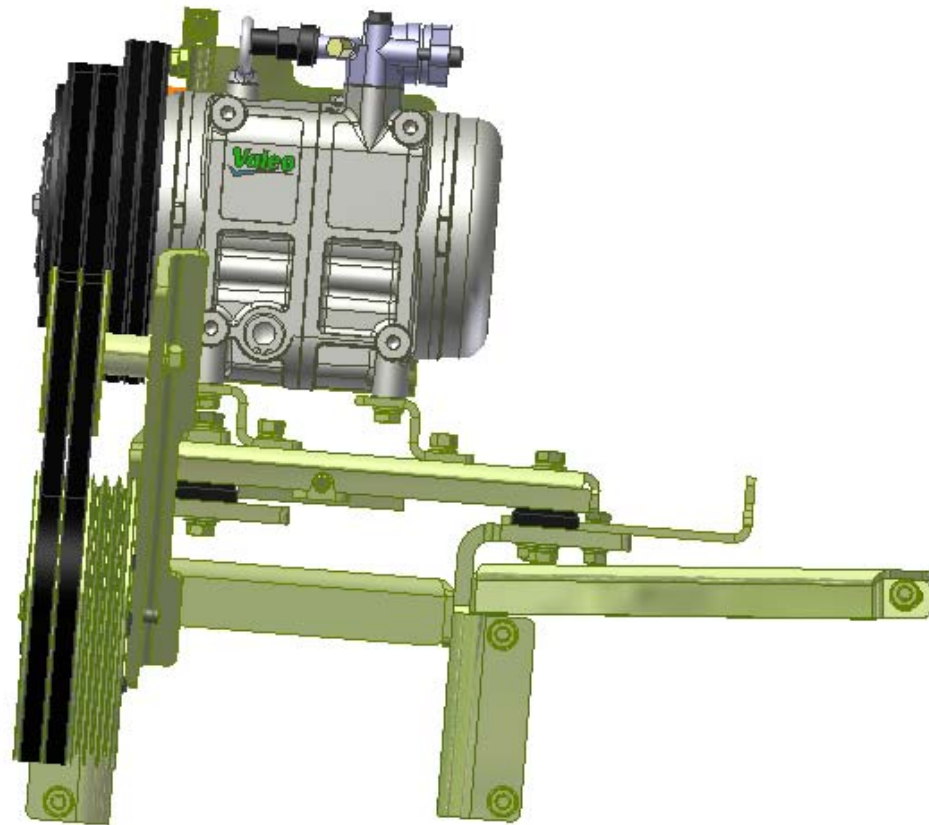
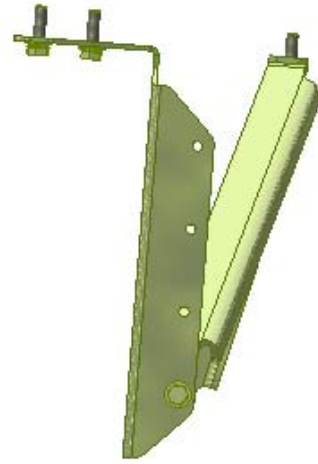
DRAWING UNIT OF MEASURE: MM (INCH)

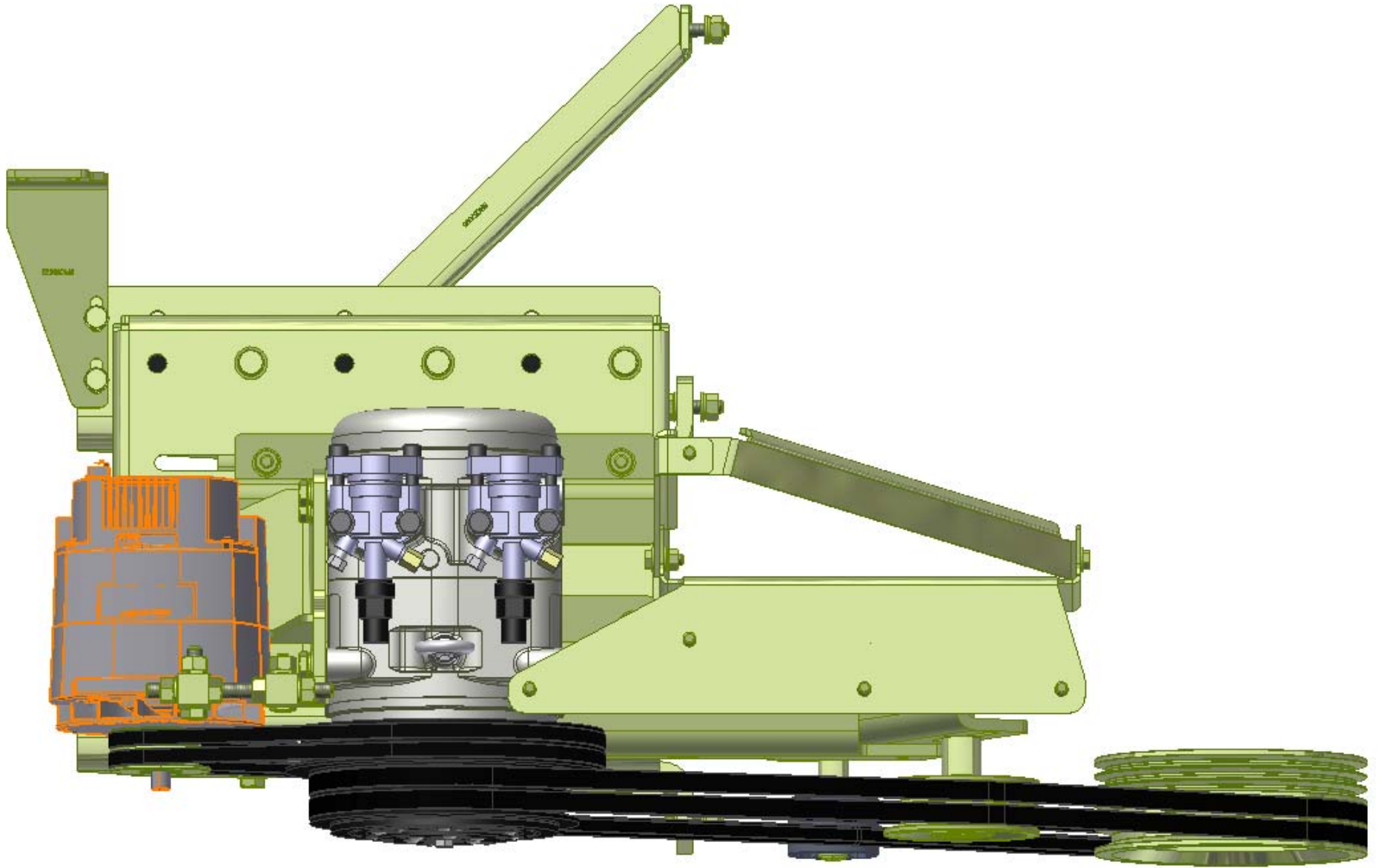
SIZE: D DWG NO: KIZ0001 REV: 1

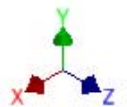
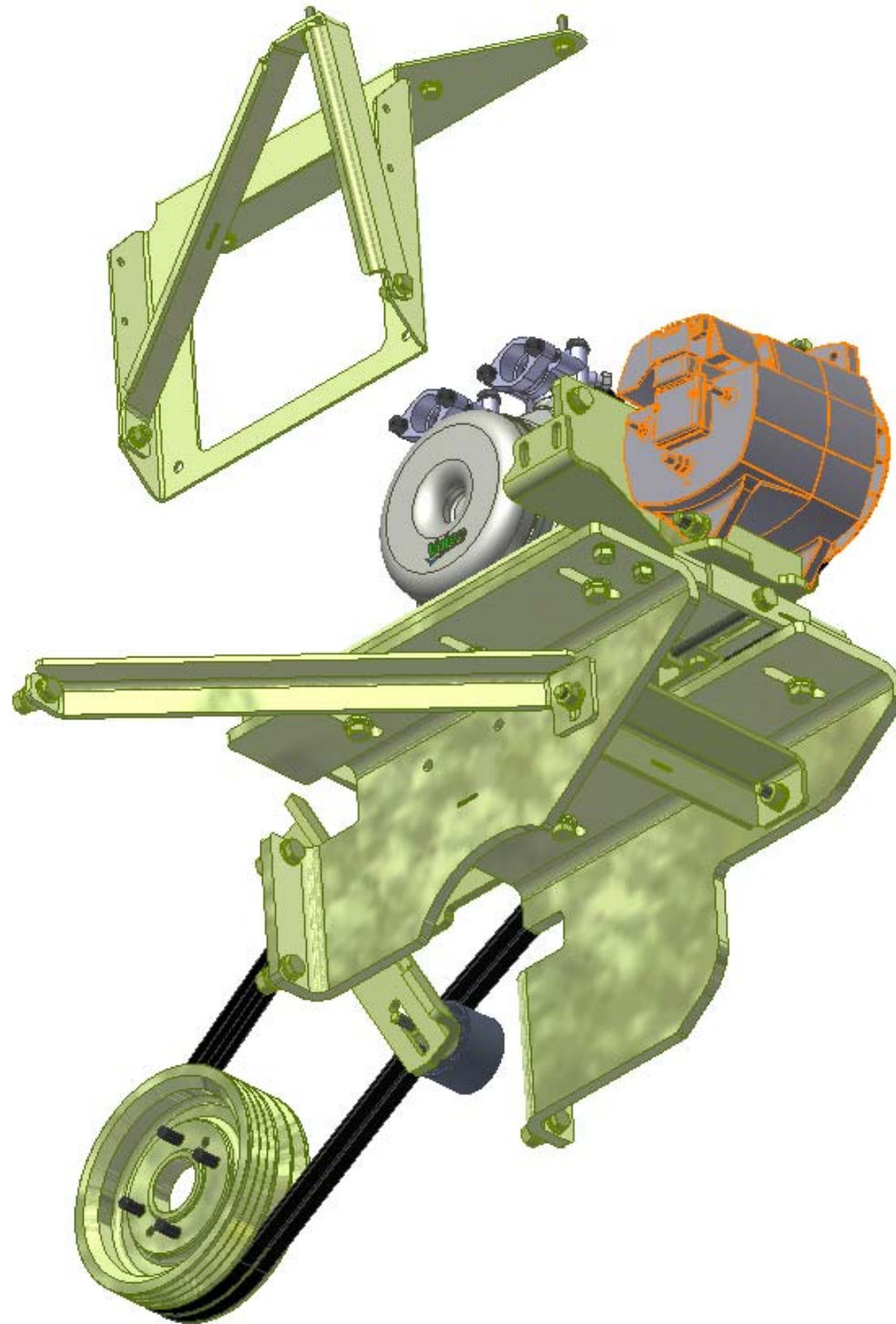
SCALE: 1:2 SHEET 1 OF 1











TransArctic A/C Compressor Mount Installation Disclaimer

All compressor mounts should be installed by qualified and trained personnel using proper tools and equipment in safe working conditions following industry standard guidelines for motor vehicle service and repair.

The installer of any compressor mount purchased from TransArctic must undertake all responsibility of issues arising from that compressor bracket being installed on any vehicle. As well as insure that a **proper and sufficient ground** is established between the compressors' clutches and the vehicle's engine. Mount functionality, operation and durability can all be compromised by an incompetent installation.

Due to the many different situations, parameters and application criteria, which are beyond the compressor mount manufacturer's control, TransArctic does not warrant design, durability, or operational functionality of any compressor mount improperly installed by another party.

With no implied guarantees it is the mount installer's strict responsibility to determine safety and functionality, of the compressor mount, at the time of installation.

Please contact TransArctic with any issue arising from installation so we may better improve the product. If you have any reservations about the compressor mount integrity contact TransArctic immediately at 1-877-COLD-AIR.

Mark OEM tensioner location

Install Kit

Check for Interferences

Check to ensure that the proper OEM tensioner orientation is maintained

Run engine with A/C system engaged for at least 10 minutes to run in belt

Check OEM tensioner orientation and adjust as required

Responsabilidad limitada de TransArctic en la instalación del soporte del compresor

Todos los soportes de los compresores deben ser instalados por personas calificadas y entrenadas, usando para ello los equipos y herramientas necesarios para esta labor en buenas condiciones y según las normas y guías para el servicio y/o reparación de motores de vehículos.

El instalador de los soportes comprados en TransArctic asume toda la responsabilidad de cualquier problema que surga en el soporte del compresor al vehículo; de igual manera es responsable que el cable a tierra sea conectado entre el embrague del compresor y el motor del vehículo.

Se advierte que el buen funcionamiento y la durabilidad del soporte pueden ser comprometidos por defectos en su instalación.

Debido a las diversas situaciones que se puedan presentar fuera del control del fabricante, TransArctic no garantiza el diseño, la durabilidad o el correcto funcionamiento de cualquier equipo inapropiadamente instalado por terceros.

Esta sobreentendido que el Instalador del montaje del compresor es estrictamente responsable de la seguridad y funcionamiento del equipo en el momento de la instalación.

Si tuviera algún problema o duda acerca de la instalación del soporte del compresor pongase en contacto inmediatamente con TransArctic al teléfono 1-877-COLD-AIR de modo que podamos mejorar nuestro producto.

Note la ubicación del medidor de tensión OEM

Instale el equipo

Controlar si hay interferencias.

Asegure que el medidor de tensión mantenga la orientación justa.

Encienda el motor por lo menos 10 minutos con el sistema A/C enganchado para que la correa corra

Controle la orientación justa del medidor de tensión y ajuste a las condiciones requeridas del fabricante