

Bill of Materials Listing

TransArctic Canada Inc.

2/23/2009
Page 1 of 1

Product Number	Description	Date	Weight	Uof M	Yield
Line Component Prod#	Description	Bin Unit	Qty		
KMN82460	Mt. Kit, DT466, RE300, 05K W/ALT	3/31/2006	262.68		0
10 BEL83035	Belt, 8gr, 3035mm (119.5") (5081195)	each	1		
20 BEL21981	Belt, B gr, 1981mm (78") (BX75), MATCHED	each	2		
30 BEL11372	Belt, A gr, 1372mm (54") (17540)	each	2		
40 BMN60001	Bkt, Spacer, DT466, CE300	each	1		
50 BMN80003	Bkt, Main, Weldmt, IC, RE300	each	1		
60 BMN80008	Vibration Isolator, Bar, 16.63 x 2 x 1.63	each	2		
70 BMN80009	Bkt, Main, Base Pl, IC, RE300	each	1		
80 BMN80031	Bkt, Main, Slide, Assy, 05K, IC, RE300	each	1		
90 BMN80013	Bkt, Main, Front Pl, IC, RE300	each	1		
100 BMN80014	Bkt, Main, Front Rein Pl, IC, RE300	each	1		
110 BMN80015	Bkt, Main, Rear Pl, IC, RE300	each	1		
120 BMN80016	Bkt, Alt, Cradle, IC, RE300	each	1		
130 BMN80017	Bkt, Alt, Slide, IC, RE300	each	1		
140 BMN80018	Bkt, Main, Brace, IC, RE300	each	1		
150 BMN80020	Bkt, B/S, Idler Mt, IC, RE300	each	1		
160 BMN80021	Bkt, Angle, Frame, IC, RE300	each	1		
170 BMN80022	Bkt, Angle, Vert, IC, RE300	each	1		
180 BMN80023	Bkt, Rad, Tie, Angle, IC, RE300	each	1		
190 BMN80032	Bkt, Adapter, PL, IC, RE300	each	1		
200 BMN80025	Bkt, Back, PL, Slide, IC, RE300	each	1		
210 BMN80026	Bkt, Int Cooler, Vert, P/S, IC, RE300	each	1		
220 BMN80027	Bkt, Int Cooler, Hor, P/S, IC, RE300	each	1		
230 BMN80028	Bkt, Int Cooler, Hor, D/S, IC, RE300	each	1		
240 BMN80029	Bkt, Int Cooler, Vert, D/S, IC, RE300	each	1		
250 BMN80030	Bkt, Air Inlet, Vert, D/S, IC, RE300	each	1		
260 BMN60007	Bkt, Sup, Air Filter, RE300, NAV466	each	1		
270 PUA84101	Pulley, Assy, Idler, P8/2B gr,7",STL,Plt	each	1		
280 PUA05002	Pulley, Assy, Idler,B/BX gr,5", ALUM,Plt	each	1		
290 PUL80076	Pulley, Idler, Backside, P8, 76d (89062)	each	3		
300 SCD01613	Spacer, Col, Drl,101.6mm x 25.4o x13.49i	each	1		
310 SCD25413	Spacer, Col, Drl,25.4mm x 25.4o x 13.49i	each	1		
320 SCD29012	Spacer, Col, Drl, 29mm x 25.4o x 12.3i	each	1		
330 SCD39710	Spacer, Col, Drl, 39.7mm x 25.4o x 10.3i	each	1		
340 SLV17010	Sleeve, Pulley, 16.9o x 22.23mm x 10.32i	each	1		
350 SLV17012	Sleeve, Pulley, 16.9o x 22.23mm x 12.32i	each	1		
360 TEN00003	Tenr, Spring, Un-Direct, 90d, 1/2 x 4.5"	each	1		
370 WFS12001	Washer, Flat, Step, 12mm, 69.85, Plt	each	1		
380 BTS06400	Bolt, U, 3/8-16, 4.00 W/IS, Nut/PI, PLT	each	4		
390 CLP04000	Clamp, T bolt, Spring, 4", CAC	each	6		
400 HOA04083	Hose, Flex, CAC, 4.0d x 8.0, 3 ring	each	3		
410 TUS04059	Tube, Stl, Exh, 4"o.d., 59 deg U,12x8.5	each	1		
420 TUS04094	Tube, Stl, Exh,4"o.d.,90 deg elb,10x51.5	each	1		
450 HOR03800	Hose, Heater, 3/8" ID, (250' - 80235GL)	feet	5.00		
460 FTP06090	Ftg, Pipe,Elb,1/4"npt to 3/8" barb,Brass	each	1		
470 FTS12001	Ftg, Adap, M12 x 1.5 x 1/4" fnpt, STL	each	1		
480 ORS12001	O Ring, Seal, 12 mm metric	each	1		
490 KBN82460	Bag Kit, Fasteners, KMN82460	each	1		

Bill of Materials Listing

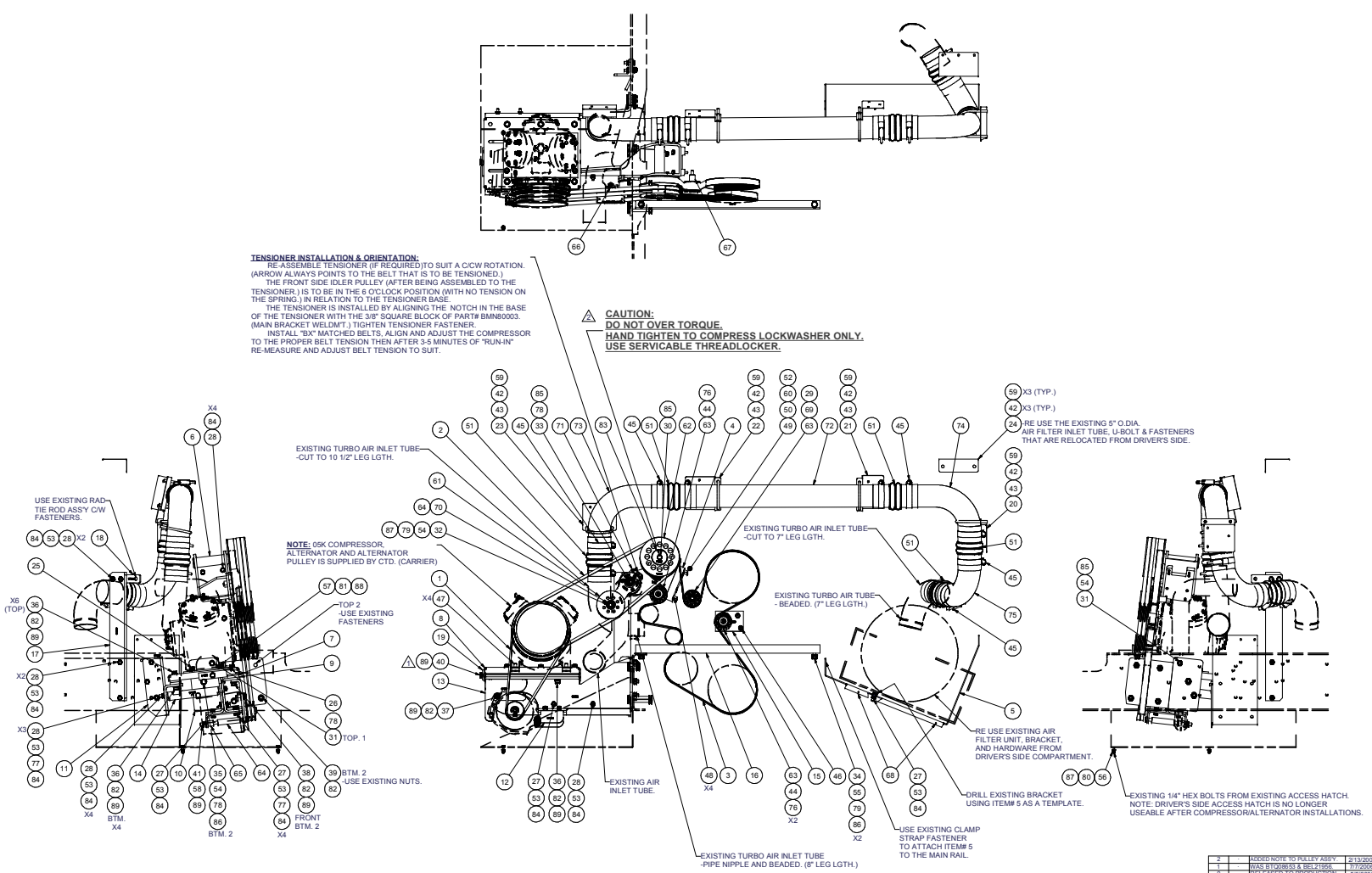
TransArctic Canada Inc.

2/23/2009
Page 1 of 1

Product Number		Description	Bin	Date	Weight	Uof M	Yield
Line	Component Prod#	Description		Unit	Qty		
KBN82460		Bag Kit, Fasteners, KMN82460		5/9/2006	8.18		0
10	BTC14040	Bolt, Hex, 14 x 2 x 40mm, 10.9, Plt		each	2		
20	BTC14030	Bolt, Hex, 14 x 2 x 30mm, 10.9, Plt		each	2		
30	BTC12100	Bolt, Hex, 12 x 1.75 x 100mm, 10.9, Plt		each	1		
40	BTC12080	Bolt, Hex, 12 x 1.75 x 80mm, 10.9, Plt		each	1		
50	BTC12040	Bolt, Hex, 12 x 1.75 x 40mm, 10.9, Plt		each	1		
60	BTC12030	Bolt, Hex, 12 x 1.75 x 30mm, 10.9, Plt		each	1		
70	BTC10090	Bolt, Hex, 10 x 1.5 x 90mm, 10.9, Plt		each	1		
80	BTC10040	Bolt, Hex, 10 x 1.5 x 40mm, 10.9, Plt		each	16		
90	BTC10030	Bolt, Hex, 10 x 1.5 x 30mm, 10.9, Plt		each	6		
100	BTQ08126	Bolt, Hex, 1/2-20unf, 1.25", 8, Plt		each	10		
110	BTQ08150	Bolt, Hex, 1/2-13unc, 1.5", 8, Plt		each	1		
120	BTQ08151	Bolt, Hex, 1/2-20unf, 1.5", 8, Plt		each	2		
130	BTQ08401	Bolt, Hex, 1/2-20unf, 4", 8, Plt		each	2		
140	BTP08653	Bolt, Hex, 1/2-13unc, 6.5", 5, Plt, FT		each	1		
150	BTQ08800	Bolt, Hex, 1/2-13unc, 8", 8, Plt		each	1		
160	BTS10001	Bolt, Shoulder, 10mm (89064)		each	2		
170	BTS04100	Bolt, Hex, Flg, Ser, 1/4-20, 1", 8.2,Plt		each	18		
180	CSF08021	Capscrew, FH, 8 x 1.25 x 20mm, 10.9,Plt		each	4		
190	CSS08040	Capscrew, SH, 8 x 1.25 x 40mm, 12.9, Plt		each	4		
200	CSF08100	Capscrew, FH, 1/2-13 x 1", Alloy, Plt		each	4		
210	SCH03075	Screw, Hex, Flg, SDT, 12-14 x .75,ST,Plt		each	2		
220	NTA10000	Nut, Hex, 10 x 1.5, 8.8, Plt		each	18		
230	NTA12000	Nut, Hex, 12 x 1.75, 8.8, Plt		each	2		
240	NTA14000	Nut, Hex, 14 x 2, 8.8, Plt		each	4		
250	NTP04000	Nut, Hex, 1/4-20unc, 5, Plt		each	2		
260	NTP07000	Nut, Hex, 7/16-14unc, 5, Plt		each	4		
270	NTP08000	Nut, Hex, 1/2-13unc, 5, Plt		each	1		
280	NTS04001	Nut, Riv, 1/4-20 unc		each	18		
290	WDS17001	Washer, Dust Cover (89060)		each	2		
300	WFA10000	Washer, Flat, 10mm, 8.8, Plt		each	8		
310	WFA12000	Washer, Flat, 12mm, 8.8, Plt		each	3		
320	WFA14000	Washer, Flat, 14mm, 8.8, Plt		each	4		
330	WFN04000	Washer, Flat, 1/4", 2, Plt		each	2		
340	WFN07000	Washer, Flat, 7/16", 2, Plt		each	4		
350	WFN08000	Washer, Flat, 1/2", 2, Plt		each	15		
360	WLA10000	Washer, Lock, 10mm, 8.8, Plt		each	23		
370	WLA12000	Washer, Lock, 12mm, 8.8, Plt		each	4		
380	WLA14000	Washer, Lock, 14mm, 8.8, Plt		each	4		
390	WLP04000	Washer, Lock, 1/4", 5, Plt		each	2		
400	WLP07000	Washer, Lock, 7/16", 5, Plt		each	4		
410	WLP08000	Washer, Lock, 1/2", 5, Plt		each	15		

TENSIONER INSTALLATION & ORIENTATION:
 RE-ASSEMBLE TENSIONER (IF REQUIRED) TO SUIT A C/CW ROTATION.
 (ARROW ALWAYS POINTS TO THE BELT THAT IS TO BE TENSIONED).
 THE FRONT SIDE IDLER PULLEY (AFTER BEING ASSEMBLED TO THE
 TENSIONER) IS TO BE IN THE 6 O'CLOCK POSITION (WITH NO TENSION ON
 THE SPRING) IN RELATION TO THE TENSIONER BASE.
 THE TENSIONER IS INSTALLED BY ALIGNING THE NOTCH IN THE BASE
 OF THE TENSIONER WITH THE 3/8" SQUARE BLOCK OF PART #BMN8003.
 (MAIN BRACKET WELDMT.) TIGHTEN TENSIONER FASTENER.
 INSTALL "BX" MATCHED BELTS, ALIGN AND ADJUST THE COMPRESSOR
 TO THE PROPER BELT TENSION THEN AFTER 3-5 MINUTES OF 'RUN-IN'
 RE-MEASURE AND ADJUST BELT TENSION TO SUIT.

CAUTION:
 DO NOT OVER TORQUE.
 HAND TIGHTEN TO COMPRESS LOCKWASHER ONLY.
 USE SERVICABLE THREADLOCKER.



89	15	EACH	WLP08000	WASHER, LOCK, 1/2", 5, PLT
88	4	EACH	WLP07000	WASHER, LOCK, 7/16", 5, PLT
87	2	EACH	WLP04000	WASHER, LOCK, 1/4", 5, PLT
86	4	EACH	WLA12000	WASHER, LOCK, 14mm, 8.8, PLT
85	4	EACH	WLA12000	WASHER, LOCK, 12mm, 8.8, PLT
84	23	EACH	WLA10000	WASHER, LOCK, 10mm, 8.8, PLT
83	1	EACH	WFS12001	WASHER, FLAT, STEP, 12mm, 69.85, PLT
82	15	EACH	WFN08000	WASHER, FLAT, 1/2", 2, PLT
81	4	EACH	WFN07000	WASHER, FLAT, 7/16", 2, PLT
80	2	EACH	WFN04000	WASHER, FLAT, 1/4", 2, PLT
79	4	EACH	WFA14000	WASHER, FLAT, 14mm, 8.8, PLT
78	3	EACH	WFA12000	WASHER, FLAT, 12mm, 8.8, PLT
77	8	EACH	WFA10000	WASHER, FLAT, 10mm, 8.8, PLT
76	2	EACH	WDS17001	WASHER, DUST COVER (PUL80076)
75	1	EACH	TUS04093	TUBE, STL, EXH, 4"o.d., 90 deg ELB, 8.5x8
74	1	EACH	TUS04092	TUBE, STL, EXH, 4"o.d., 90 deg ELB, 12x8
73	1	EACH	TUS04091	TUBE, STL, EXH, 4"o.d., 90 deg ELB, 12x10
72	1	EACH	TUS04000-3700	TUBE, STL, EXH, 4"o.d. x 37"
71	1	EACH	TEN00003	TENR, SPRING, UN-DIRECT, 90d, 1/2 x 4.5"
70	1	EACH	SLV17012	SLEEVE, PULLEY, 16.9d x 22.23mm x12.19
69	1	EACH	SLV17010	SLEEVE, PULLEY, 16.9d x 22.23mm x 10.32
68	2	EACH	SCH03075	SCREW, HEX, FLG, SDT, 12-14 x .75, ST, PLT
67	1	EACH	SCD39710	SPACER, COL, DRL, 39.7mm x 25.4d x 10.31
66	1	EACH	SCD29012	SPACER, COL, DRL, 29mm x 25.4d x 12.9
65	1	EACH	SCD25413	SPACER, COL, DRL, 25.4mm x 25.4d x 13.49
64	1	EACH	SCD01613	SPACER, COL, DRL, 101.6mm x 25.4d x 13.49
63	3	EACH	PUL80076	PULLEY, IDLER, BACKSIDE, P8, 76D, 39W
62	1	EACH	PUL84101	PULLEY, ASSY, IDLER, P8, 29 gr 7, ST, PLT
61	1	EACH	PJA05002	PULLEY, ASSY, IDLER, AB gr, 5", ALUM, PLT
60	1	EACH	ORS12001	O RING, SEAL, 12 MM METRIC
59	18	EACH	NTS04001	NUT, RIV, 1/4-20 UNF
58	1	EACH	NTP09000	NUT, HEX, 1/2-13UNC, 5, PLT
57	4	EACH	NTP07000	NUT, HEX, 7/16-14UNC, 5, PLT
56	2	EACH	NTP04000	NUT, HEX, 1/4-20UNC, 5, PLT
55	4	EACH	NTA14000	NUT, HEX, 1/4 x 2, 8.8, PLT
54	2	EACH	NTA12000	NUT, HEX, 12 x 1.75, 8.8, PLT
53	18	EACH	NTA10000	NUT, HEX, 10 x 1.5, 8.8, PLT
52	5	FEET	HOR03800	HOSE, HEATER, 3/8" I.D. (267-80235GL)
51	5	EACH	HQ04003	HOSE, FLEX, CAC, 4.0d x 8.0, 3 RING
50	1	EACH	FTS12001	FTG, ADAP, M12 x 1.5, 1/4" FNPT, STL
49	1	EACH	FTP06900	FTG, PIPE, ELB, 1/4" NPT to 3/8" BARB, BRASS
48	4	EACH	CS808040	CAPSCREW, SH, 8 x 1.25 x 40mm, 12.9, PLT
47	4	EACH	CSF08000	CAPSCREW, FH, 3/8-16 x 1", 9, PLT
46	4	EACH	CSF08021	CAPSCREW, FH, 8 x 1.25 x 10mm, 10.9, PLT
45	10	EACH	CLP04000	CLAMP, T BOLT, SPRING, 4", CAC
44	2	EACH	BTS10001	BOLT, SHOULDER, 10mm (IDLER PULLEY)
43	4	EACH	BTS06400	Bolt, U, 3/8-16, 4.00 WTS, NALPH, PLT
42	18	EACH	BTS04100	BOLT, HEX, F/LG SER, 1/4-20, 1", S2, PLT
41	1	EACH	BTQ08800	BOLT, HEX, 1/2-13UNC x 8.00, 8, PLT
40	1	EACH	BTQ08150	BOLT, HEX, 1/2-13UNC x 1.50, 8, PLT
39	2	EACH	BTQ08063	BOLT, HEX, 1/2-13UNC x 6.50, 5, PLT, FT
38	2	EACH	BTQ08041	BOLT, HEX, 1/2-20UNF x 4.00, 10.9, PLT
37	1	EACH	BTQ08150	BOLT, HEX, 1/2-13UNC x 1.50, 8, PLT
36	10	EACH	BTQ08126	BOLT, HEX, 1/2-20UNF x 1.25, 8, PLT
35	2	EACH	BTC14040	BOLT, HEX, 1/4 x 2 x 40mm, 10.9, PLT
34	2	EACH	BTC14030	BOLT, HEX, 1/4 x 2 x 30mm, 10.9, PLT
33	1	EACH	BTC12100	BOLT, HEX, 12 x 1.75 x 100mm, 10.9, PLT
32	1	EACH	BTC12080	BOLT, HEX, 12 x 1.75 x 80mm, 10.9, PLT
31	1	EACH	BTC12040	BOLT, HEX, 12 x 1.75 x 40mm, 10.9, PLT
30	1	EACH	BTC12030	BOLT, HEX, 12 x 1.75 x 30mm, 10.9, PLT
29	1	EACH	BTC10090	BOLT, HEX, 10 x 1.5 x 90mm, 10.9, PLT
28	16	EACH	BTC10040	BOLT, HEX, 10 x 1.5 x 40mm, 10.9, PLT
27	6	EACH	BT10030	BOLT, HEX, 10 x 1.5 x 30mm, 10.9, PLT
26	1	EACH	BMN80032	BKT, ADAPTER, PL, IC, RE300
25	1	EACH	BMN80031	BKT, MAIN, SLIDE, ASSY, OSK, IC, RE300
24	1	EACH	BMN80030	BKT, AIR INLET, VERT, P/S, IC, RE300
23	1	EACH	BMN80029	BKT, INT COOLER, VERT, D/S, IC, RE300
22	1	EACH	BMN80028	BKT, INT COOLER, HOR, D/S, IC, RE300
21	1	EACH	BMN80027	BKT, INT COOLER, HOR, P/S, IC, RE300
20	1	EACH	BMN80026	BKT, INT COOLER, VERT, P/S, IC, RE300
19	1	EACH	BMN80025	BKT, MAIN, PL, SLIDE, IC, RE300
18	1	EACH	BMN80023	BKT, RAD, T, ANGLE, IC, RE300
17	1	EACH	BMN80022	BKT, ANGLE, VERT, IC, RE300
16	1	EACH	BMN80021	BKT, ANGLE, CHASSIS, IC, RE300
15	1	EACH	BMN80020	BKT, BELT, IC, RE300
14	1	EACH	BMN80018	BKT, MAIN, BRACE, IC, RE300
13	1	EACH	BMN80017	BKT, ALT, SLIDE, IC, RE300
12	1	EACH	BMN80016	BKT, ALT, CRADLE, IC, RE300
11	1	EACH	BMN80015	BKT, MAIN, REIN, IC, RE300
10	1	EACH	BMN80014	BKT, MAIN, FRONT REIN PL, IC, RE300
9	1	EACH	BMN80013	BKT, MAIN, BASE PL, IC, RE300
8	1	EACH	BMN80009	BKT, MAIN, BASE PL, IC, RE300
7	2	EACH	BMN80008	VIBRATION CLAYDIP, BAR, 16.83 x 2 x 1.63
6	1	EACH	BMN80003	BKT, MAIN, WELDMT, IC, RE300
5	1	EACH	BMN60007	BKT, SUP, AIR FILTER, RE300, NAV466
4	1	EACH	BMN60001	BKT, SPACER, DT466, CE300
3	1	EACH	REL83008	BELT, 8, 3035mm (119.5")
2	2	EACH	BEL12981	BELT, B gr, 1981mm (78") (BX75) MATCHED
1	2	EACH	BEL11372	BELT, A gr, 1372mm (54") (17840)

ITEM		QTY	U/M	PART NUMBER	DESCRIPTION
ITEMS OF MATERIALS					
1	2	ADDED NOTE TO PULLEY ASSY	2/13/2009	VALU	5/9/2006
1	2	WAS BTQ08063 & BELT 11372	7/7/2006	VALU	5/9/2006
1	2	RECESS TO PREVENT OILING	1/23/2006	VALU	5/9/2006
1	2	REVISION		DATE	BY:
1	2	REVISION		DATE	BY: James Stewart
1	2	REVISION		DATE	BY: JLF
1	2	REVISION		DATE	BY: JLF
1	2	REVISION		DATE	BY: JLF
1	2	REVISION		DATE	BY: JLF
1	2	REVISION		DATE	BY: JLF
1	2	REVISION		DATE	BY: JLF
1	2	REVISION		DATE	BY: JLF
1	2	REVISION		DATE	BY: JLF

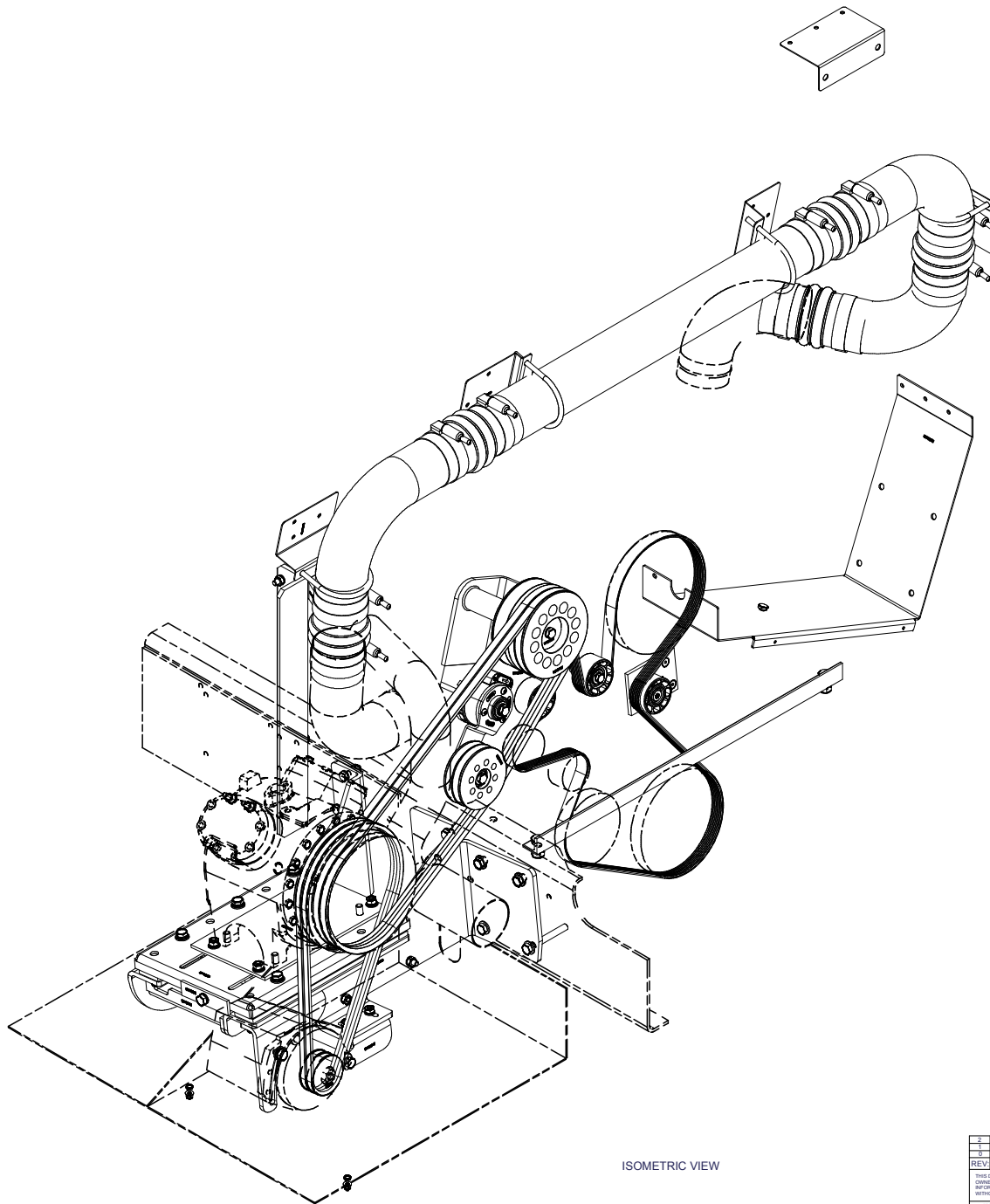
DATE: 5/9/2006
 DRAWN BY: Dale Mason
 CHECKED BY: Rgn Ingram
 APPROVED BY: Dale Mason

SIZE: F
 SCALE: 1:8
 DWG NO: KMN82460
 REV: 2

NOTES:
 1) USE SERVICABLE THREADLOCKER ON ALL FASTENERS TO ENGINE COMPONENTS AND TORQUE ALL BOLTS TO S.A.E. SPECIFICATIONS.
 2) SEE "TRANSARTIC A/C COMPRESSOR MOUNT INSTALLATION DISCLAIMER".



TRANSARTIC INC.



ISOMETRIC VIEW

2		ADDED NOTE TO PULLEY ASSEMBLY	2/13/2006	VAL	5/9/2006	5/9/2006	5/9/2006	TRANSARCTIC INC. TITLE
1		BASE BT603633 & BELT 1966	7/7/2005	VAL	5/9/2006	5/9/2006	5/9/2006	
0		RELEASED TO PRODUCTION	12/2005	GA				
REV	ECN	DESCRIPTION	DATE	BY	DATE	DATE	DATE	
				James Stewart	5/3/2006	5/9/2006	5/9/2006	
THIS DRAWING CONTAINS PROPRIETARY CONFIDENTIAL INFORMATION OWNED BY TRANSARCTIC CANADA INC. THE DOCUMENT AND THE INFORMATION IN IT ARE NOT TO BE USED, DISCLOSED OR REPRODUCED WITHOUT EXPRESS WRITTEN PERMISSION OF THE COMPANY.					MFG Val Jakovlew APPROVED Dale Mason	5/9/2006	5/9/2006	Mt. Kit, DT466, RE300, 05K
UNSPECIFIED TOLERANCES: DIMENSIONS IN INCH: .005 DIMENSIONS IN MILLIMETERS: .15 HOLE POSITION: .010 HOLE LOCATION: .010 HOLE DIA: .010 HOLE DIA: .010					THIRD ANGLE PROJECTION	DRAWING UNIT OF MEASURE: MM (INCH)	SCALE: NTS	DWG NO: KMN82460 REV: 2



Air Filter and Air Intake stack is moved to curbside of bus. See Photos below

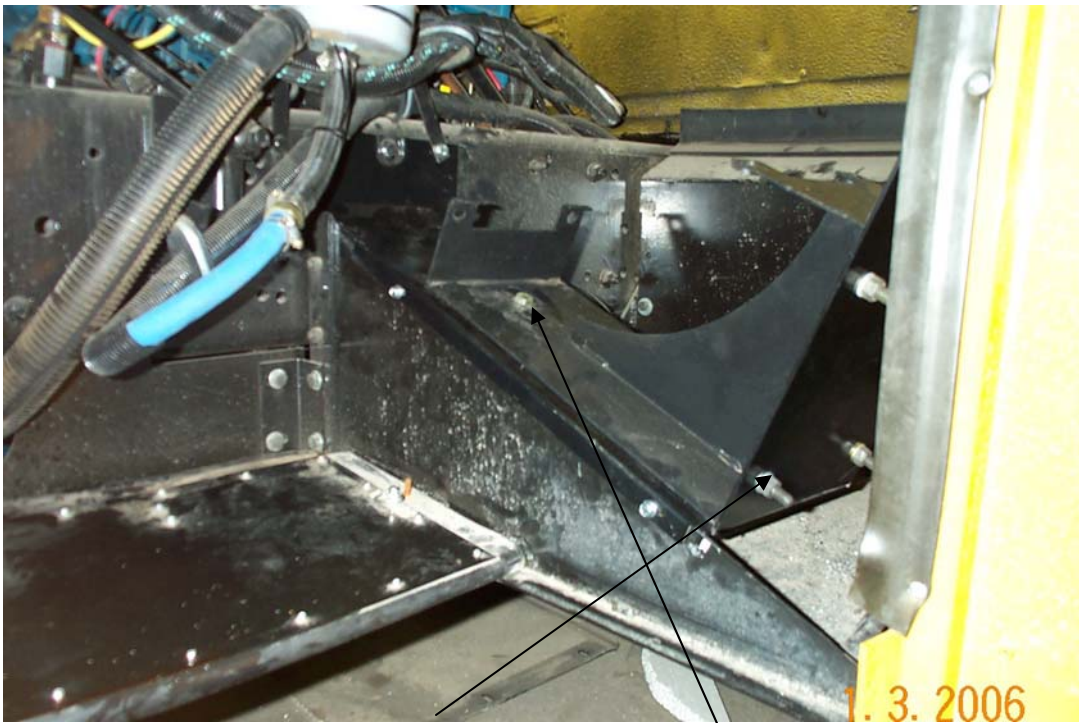


Cut Turbo inlet tube as show at white line. Debur and Clean all parts.

Remove OEM Air Filter and Bracket from Drivers side. This part used at air Filter



Navistar Air Filter brackets mounts on our BMN60007 bracket mounted on curbside.



Mount Air Filter bracket with 4 bolts then drill this bolt hole.



Bracket BMN80026 supplied in kit see Mount Drawing



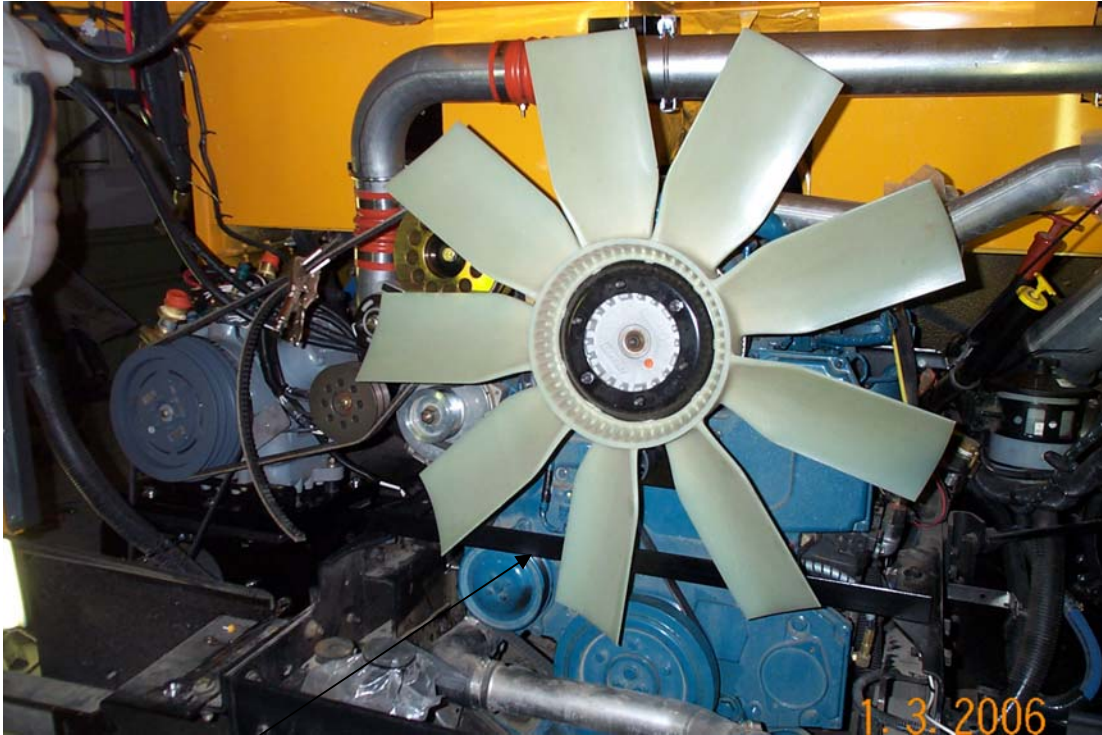
Note Air Filter rotation / This is the remant part of the cut part



Install Air intake in curbside air intake cavity using BMN80030
Support Intake Tube on reinforced surfaces using supplied nutserts.



Install BMN80020 without removing Radiator. Install BMN60001 Spacer, BMN80003
Jackshaft bracket, Combo Pulley and idlers as per drawing. Install Brass Fitting, O-Ring,
Elbow and Overflow hose.



Install BMN80021 and tighten before installing Compressor brackets.



Install Main Compressor Brackets as per drawing.



Install BMN80022 Rad Support Bracket and re-assign Rad Support Rod from OEM position to new position on BMN80023 at top of Rad Support Bracket.



Install Compressor Mounting Plate, Compressor, Tensioner, Alternator and Belts as per drawing. Run Compressor and check pulleys and belts for alignment.

KMN84160 - Mt. Kit, DT466, RE300, 05G W/ALT
KMN82460 - Mt. Kit, DT466, RE300, 05K W/ALT
KMN82461 - Mt. Kit, DT466, RE300, 05K W/O ALT

DO NOT REMOVE RADIATOR

TransArctic A/C Compressor Mount Installation Disclaimer

All compressor mounts should be installed by qualified and trained personnel using proper tools and equipment in safe working conditions following industry standard guidelines for motor vehicle service and repair.

The installer of any compressor mount purchased from TransArctic must undertake all responsibility of issues arising from that compressor bracket being installed on any vehicle. Mount functionality, operation and durability can all be compromised by an incompetent installation.

Due to the many different situations, parameters and application criteria, which are beyond the compressor mount manufacturer's control, TransArctic does not warrant design, durability, or operational functionality of any compressor mount improperly installed by another party.

With no implied guarantees it is the mount installer's strict responsibility to determine safety and functionality, of the compressor mount, at the time of installation.

Please contact TransArctic with any issue arising from installation so we may better improve the product. If you have any reservations about the compressor mount integrity contact TransArctic immediately at 1-877-COLD-AIR.