

Bill of Materials Listing

TransArctic Canada Inc.

2/27/2009
Page 1 of 1

Product Number	Description	Date	Weight	Uof M	Yield
Line Component Prod#	Description	Bin Unit	Qty		
KMC61370	Mt Kit, ISB, 6.7L, BBCV, 1 TM-21, '07		3/31/2007	48.34	0
10	BEL61392		Belt, 6gr, 1392mm (54.8") (5060548)	each	1
15	BMC60037		Bkt, Shroud, Cover, 12 Ga. (.1046")	each	1
20	BMC67001		Bkt, Main, Weldmt, 6.7L, ISB, Conv	each	1
30	BMC67002		Bkt, Main, Spacer, Block, 6.7L, ISB,Conv	each	1
40	BMC67003		Bkt, Brace, Diag, D/S, Sup,6.7,LISB,Conv	each	1
50	SCD85910		Spacer, Col,Drl,187.15mm x25.4o x10.32i	each	1
60	PUL81074		Pulley, Idler, Frontside, P8,74d (89103)	each	1
70	TEN80002		Tenr, HD Spring, BackSide, CCW (89200A)	each	1
80	KBC61370		Bag Kit, Fasteners, KMC61370/KMC61070	each	1

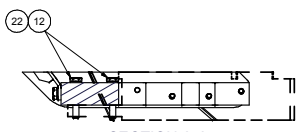
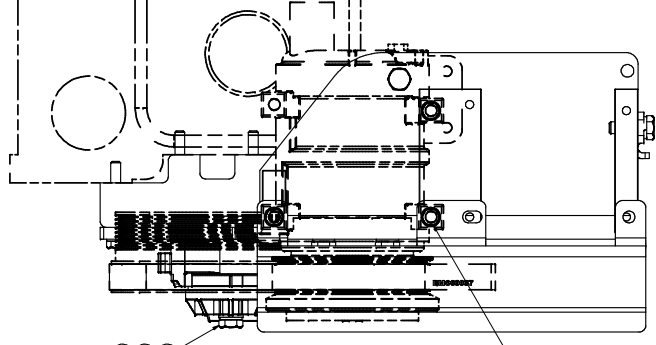
Bill of Materials Listing

TransArctic Canada Inc.

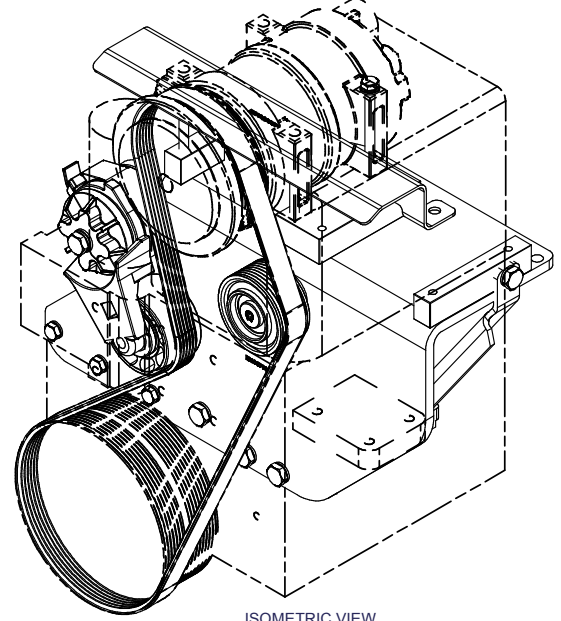
2/27/2009
Page 1 of 1

Product Number	Description	Date	Weight	Uof M	Yield
Line Component Prod#	Description	Bin Unit	Qty		
KBC61370	Bag Kit, Fasteners, KMC61370/KMC61070		3/31/2006	1.69	0
10	BTS10001	Bolt, Shoulder, 10mm (89064)	each	1	
12	BTC10220	Bolt, Hex, 10 x 1.5 x 220mm, 10.9, Plt	each	1	
15	BTC10080	Bolt, Hex, 10 x 1.5 x 80mm, 10.9, Plt,FT	each	1	
17	BTC10060	Bolt, Hex, 10 x 1.5 x 60mm, 10.9, Plt	each	2	
20	BTC10040	Bolt, Hex, 10 x 1.5 x 40mm, 10.9, Plt,FT	each	1	
30	BTC10030	Bolt, Hex, 10 x 1.5 x 30mm, 10.9, Plt	each	4	
35	BTC10025	Bolt, Hex, 10 x 1.5 x 25mm, 10.9, Plt	each	1	
40	BTC08100	Bolt, Hex, 8 x 1.25 x 100mm, 10.9, Plt	each	3	
50	BTC08090	Bolt, Hex, 8 x 1.25 x 90mm, 10.9, Plt	each	2	
60	BTC08065	Bolt, Hex, 8 x 1.25 x 65mm, 10.9, Plt	each	1	
100	WFA08000	Washer, Flat, 8mm, 8.8, Plt	each	3	
105	WFA10000	Washer, Flat, 10mm, 8.8, Plt	each	1	
110	WLA08000	Washer, Lock, 8mm, 8.8, Plt	each	6	
120	WLA10000	Washer, Lock, 10mm, 8.8, Plt	each	10	

8 7 6 5 4 3 2 1

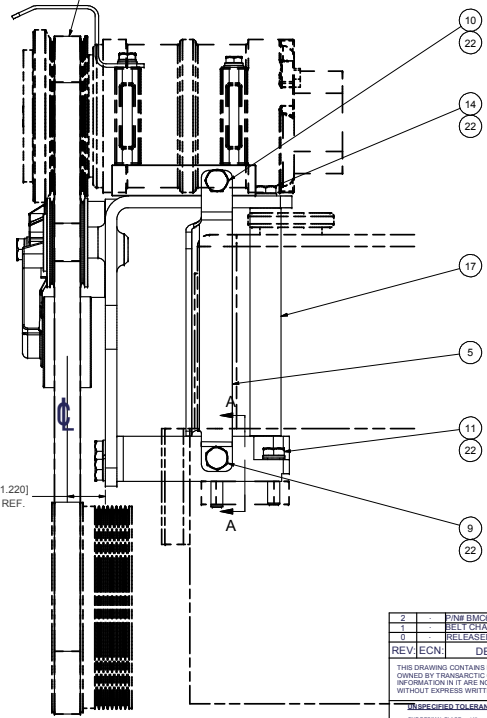
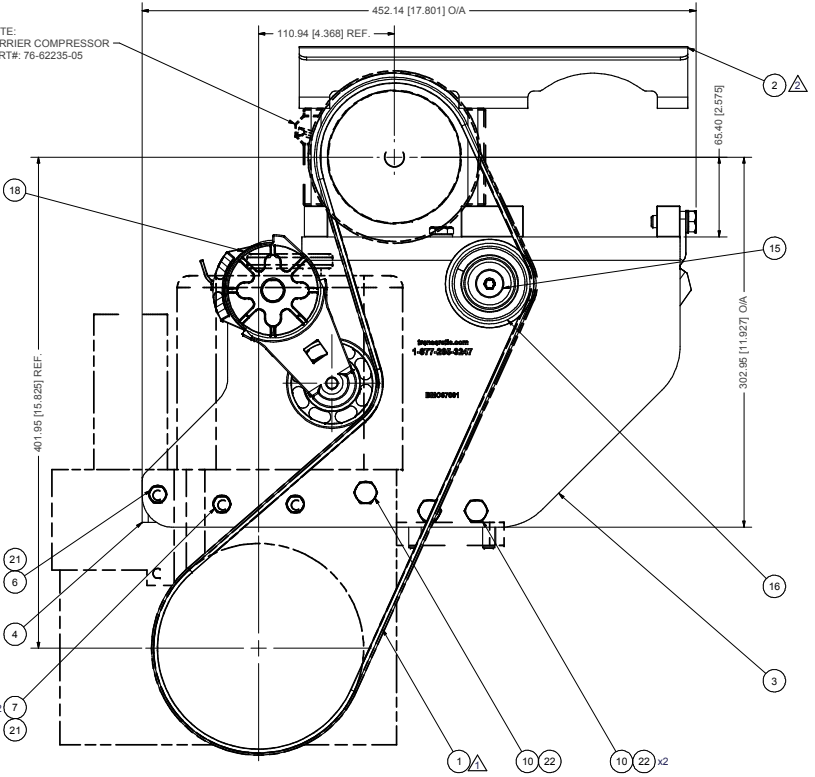


NOTE:
INSTALL THE 6 GR. BELT ON THE
MIDDLE 6 GROOVES OF THE 8 GR.
COMPRESSOR PULLEY.



ISOMETRIC VIEW

NOTE:
CARRIER COMPRESSOR
PART#: 76-62235-05



NOTES:

- 1) USE SERVICABLE THREADLOCKER ON ALL FASTENERS TO ENGINE COMPONENTS AND TORQUE ALL BOLTS TO S.A.E. SPECIFICATIONS.
- 2) SEE "TRANSARGTIC A/C COMPRESSOR MOUNT INSTALLATION DISCLAIMER".

ITEM	QTY	U/M	PART NUMBER	DESCRIPTION
22	10	EACH	WLA10000	WASHER, LOCK, 10mm, 8.8, PLT
21	6	EACH	WLA08000	WASHER, LOCK, 8mm, 8.8, PLT
20	1	EACH	WFA10000	WASHER, FLAT, 10mm, 8.8, PLT
19	3	EACH	WFA08000	WASHER, FLAT, 8mm, 8.8, PLT
18	1	EACH	TEN80002	TENR, HD SPRING, BACKSIDE, CCW
17	1	EACH	SCD85910	SPACER, COL, DRL, 187, 15mm x25.4o x10.32i
16	1	EACH	PUL81074	PULLEY, IDLER, FRONTSIDE, P8, 74d x 39w
15	1	EACH	BTS10001	BOLT, SHOULDER, 10mm (IDLER PULLEY)
14	1	EACH	BTC10220	BOLT, HEX, 10 x 1.5 x 220mm, 10.9, PLT
13	1	EACH	BTC10080	BOLT, HEX, 10 x 1.5 x 80mm, 10.9, PLT
12	2	EACH	BTC10060	BOLT, HEX, 10 x 1.5 x 60mm, 10.9, PLT
11	1	EACH	BTC10040	BOLT, HEX, 10 x 1.5 x 40mm, 10.9, PLT
10	1	EACH	BTC10030	BOLT, HEX, 10 x 1.5 x 30mm, 10.9, PLT
9	1	EACH	BTC10025	BOLT, HEX, 10 x 1.5 x 25mm, 10.9, PLT
8	3	EACH	BTC08100	BOLT, HEX, 8 x 1.25 x 100mm, 10.9, PLT
7	2	EACH	BTC08090	BOLT, HEX, 8 x 1.25 x 90mm, 10.9, PLT
6	1	EACH	BTC08065	BOLT, HEX, 8 x 1.25 x 65mm, 10.9, PLT
5	1	EACH	BMC67003	BKT, BRACE, DIAG, D/S, SUP, 6.7L, ISB, CON
4	1	EACH	BMC67002	BKT, MAIN, SPACER, LOCK, 6.7L, ISB, CON
3	1	EACH	BMC67001	BKT, MAIN, WELDMT, 6.7L, ISB, CON
2	1	EACH	BMC60037	BKT, SHROUD, COVER, 1.2 CA, (1046*)
1	1	EACH	BEL1392	BELT, 6gr, 1392mm (54.8") (5060548)

BILL OF MATERIALS

2	2	PNR BMC60037 ADDED TO BOM	1/20/2009	ERR	5/24/2007	
1	1	BELT CHANGE	6/14/2007	ERR	5/24/2007	
		RELEASED TO PRODUCTION	5/24/2007	VAL	5/24/2007	
REV	ECN	DESCRIPTION	DATE	BY		
				James Stewart	5/24/2007	
				Val Jakowlew	5/24/2007	
				Dale Mason	5/24/2007	

TRANSARGTIC INC.

TITLE

MT KIT, ISB, 6.7L, BBCV, 1 TM-21, '07

SIZE D DWG NO KMC61370 REV 2

SCALE 1:2 SHEET 1 OF 1

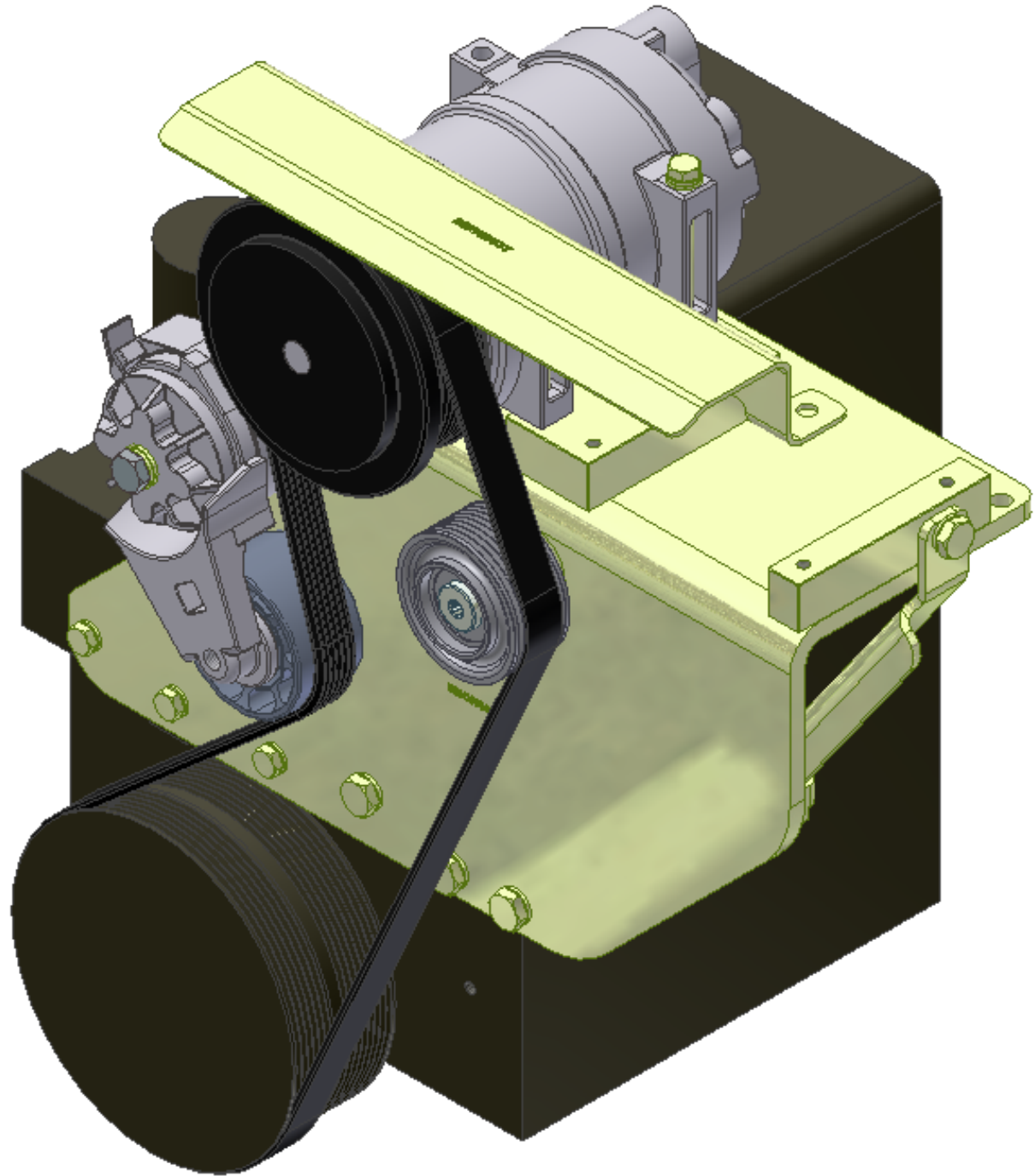
UNSPECIFIED TOLERANCES:

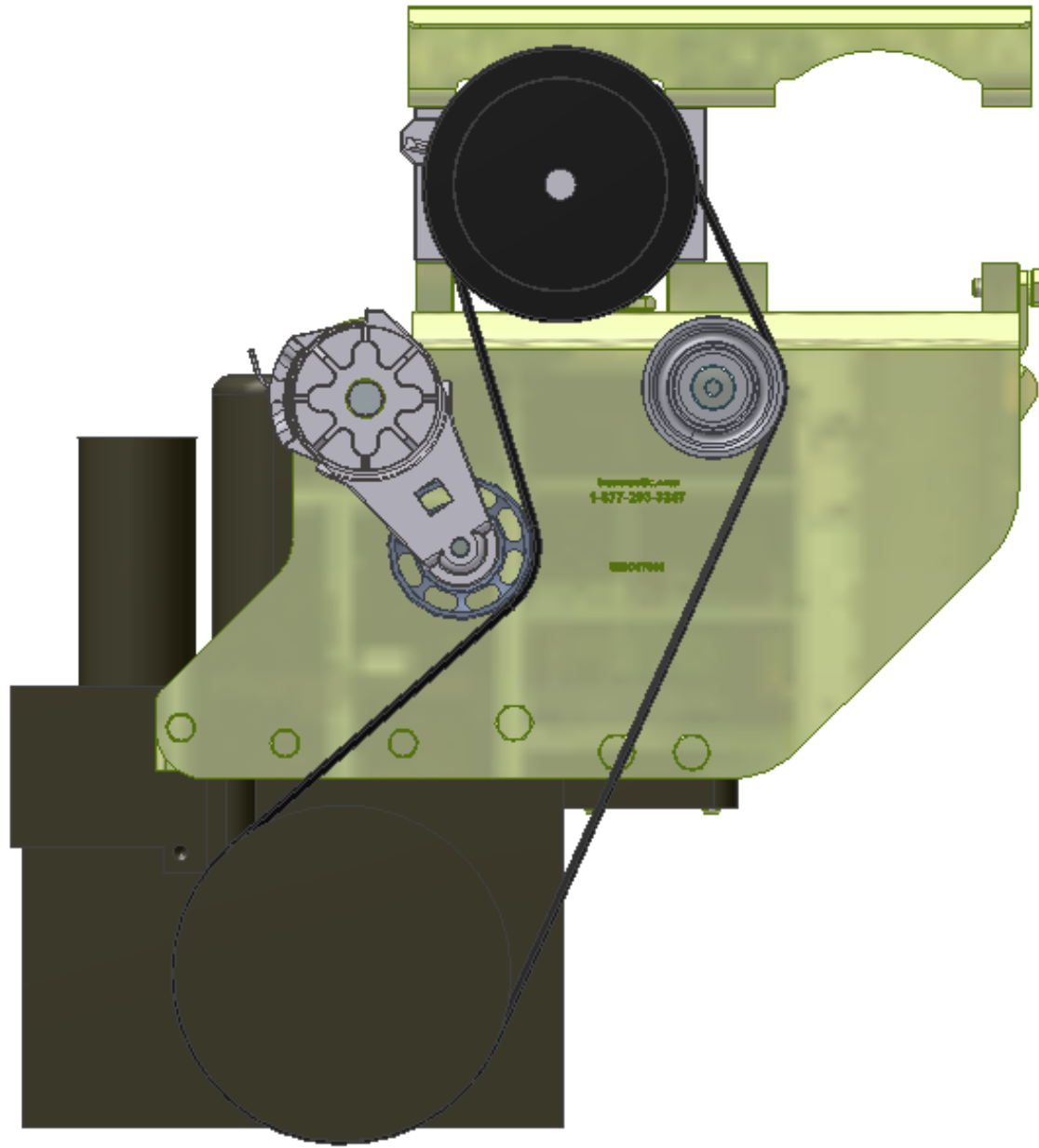
ONE DECIMAL PLACE (10) UNLESS OTHERWISE SPECIFIED

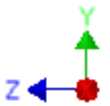
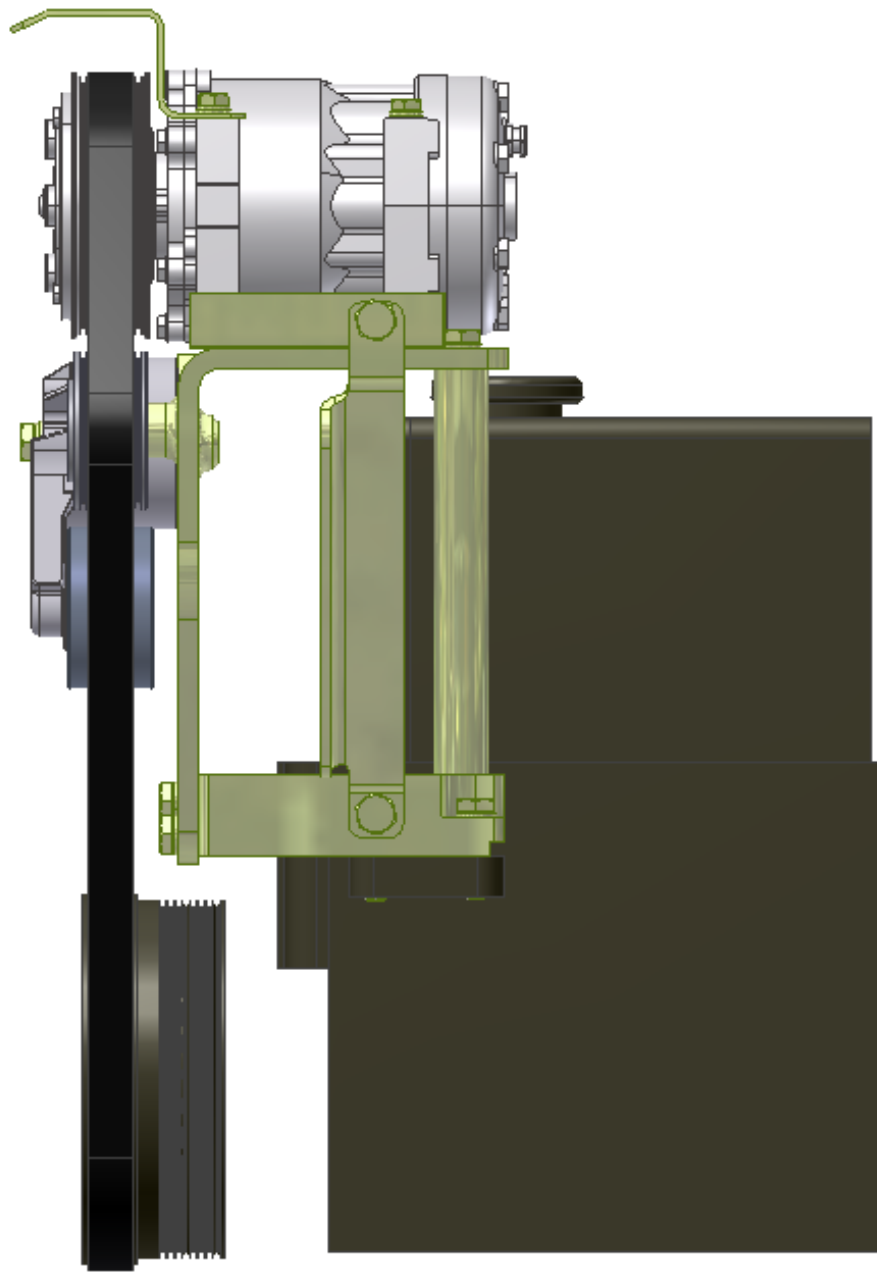
TWO DECIMAL PLACE (20) UNLESS OTHERWISE SPECIFIED

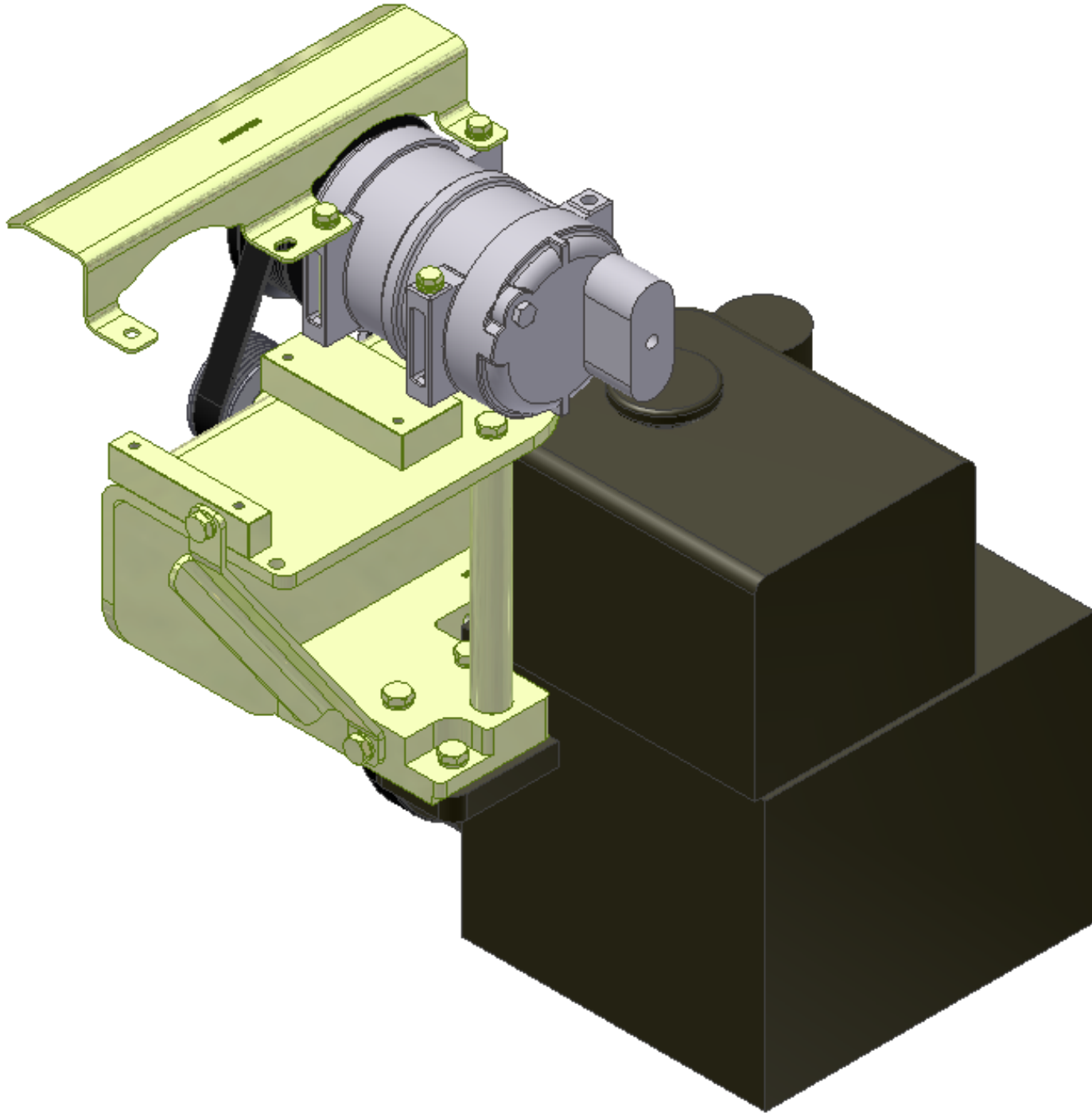
THIRD ANGLE PROJECTION

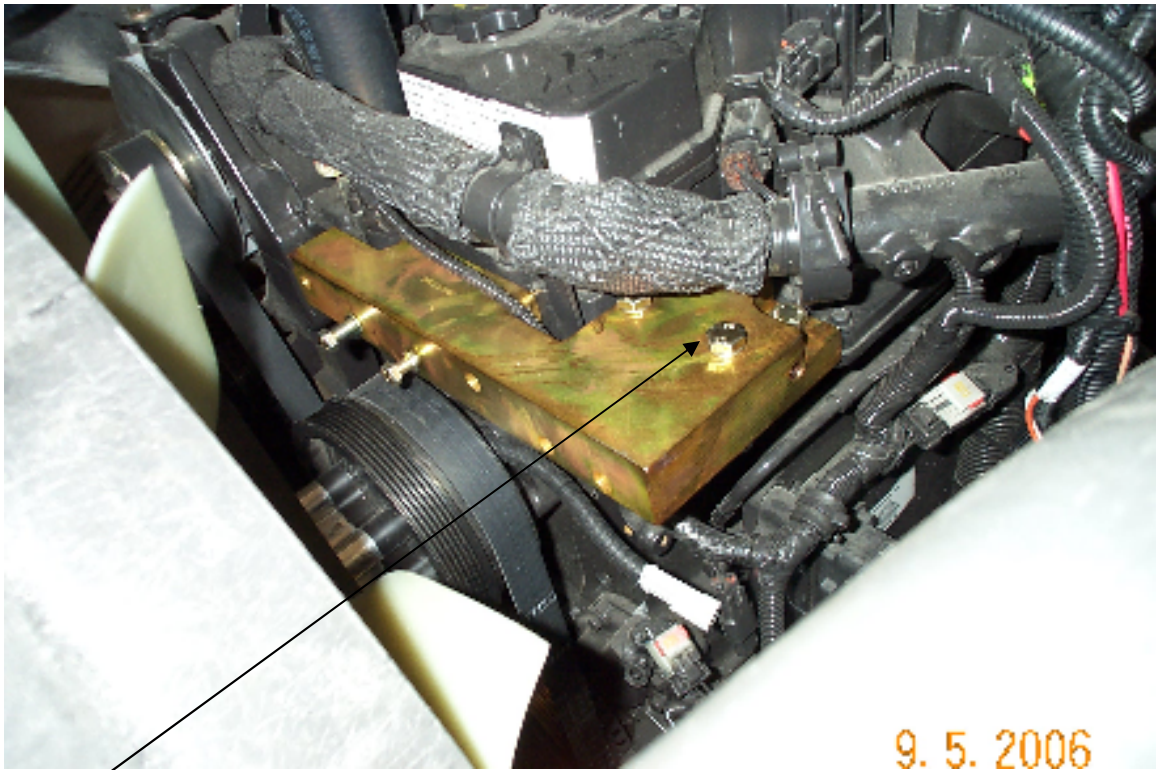
8 7 6 5 4 3 2 1











Install bolts finger tight to hold in place then put on Main Bracket

TransArctic A/C Compressor Mount Installation Disclaimer

All compressor mounts should be installed by qualified and trained personnel using proper tools and equipment in safe working conditions following industry standard guidelines for motor vehicle service and repair.

The installer of any compressor mount purchased from TransArctic must undertake all responsibility of issues arising from that compressor bracket being installed on any vehicle. As well as insure that a **proper and sufficient ground** is established between the compressors' clutches and the vehicle's engine. Mount functionality, operation and durability can all be compromised by an incompetent installation.

Due to the many different situations, parameters and application criteria, which are beyond the compressor mount manufacturer's control, TransArctic does not warrant design, durability, or operational functionality of any compressor mount improperly installed by another party.

With no implied guarantees it is the mount installer's strict responsibility to determine safety and functionality, of the compressor mount, at the time of installation.

Please contact TransArctic with any issue arising from installation so we may better improve the product. If you have any reservations about the compressor mount integrity contact TransArctic immediately at 1-877-COLD-AIR.