

Bill of Materials Listing

TransArctic Canada Inc.

2/23/2009
Page 1 of 1

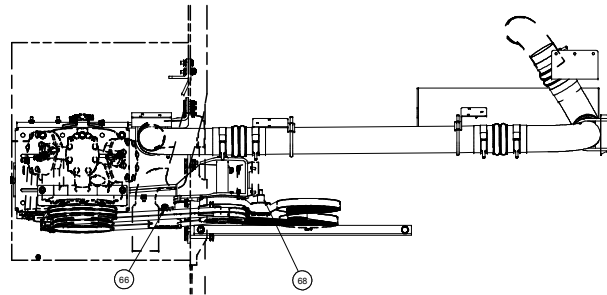
Product Number	Description	Date	Weight	Uof M	Yield
Line Component Prod#	Description	Bin Unit	Qty		
KMN84160	Mt. Kit, DT466, RE300, 05G W/ALT	3/31/2006	259.50		0
10 BEL83035	Belt, 8gr, 3035mm (119.5") (5081195)	each	1		
20 BEL21956	Belt, B gr, 1956mm (77") (BX74), MATCHED	each	2		
30 BEL11410	Belt, A gr, 1410mm (55.5") (17555)	each	2		
40 BMN60001	Bkt, Spacer, DT466, CE300	each	1		
50 BMN80003	Bkt, Main, Weldmt, IC, RE300	each	1		
60 BMN80008	Vibration Isolator, Bar, 16.63 x 2 x 1.63	each	2		
70 BMN80009	Bkt, Main, Base Pl, IC, RE300	each	1		
80 BMN80010	Bkt, Main, Slide, Assy, O5G, IC, RE300	each	1		
90 BMN80013	Bkt, Main, Front Pl, IC, RE300	each	1		
100 BMN80014	Bkt, Main, Front Rein Pl, IC, RE300	each	1		
110 BMN80015	Bkt, Main, Rear Pl, IC, RE300	each	1		
120 BMN80016	Bkt, Alt, Cradle, IC, RE300	each	1		
130 BMN80017	Bkt, Alt, Slide, IC, RE300	each	1		
140 BMN80018	Bkt, Main, Brace, IC, RE300	each	1		
150 BMN80020	Bkt, B/S, Idler Mt, IC, RE300	each	1		
160 BMN80021	Bkt, Angle, Frame, IC, RE300	each	1		
170 BMN80022	Bkt, Angle, Vert, IC, RE300	each	1		
180 BMN80023	Bkt, Rad, Tie, Angle, IC, RE300	each	1		
190 BMN80024	Bkt, Comp, FRT, Z, IC, RE300	each	1		
200 BMN80025	Bkt, Back, PL, Slide, IC, RE300	each	1		
210 BMN80026	Bkt, Int Cooler, Vert, P/S, IC, RE300	each	1		
220 BMN80027	Bkt, Int Cooler, Hor, P/S, IC, RE300	each	1		
230 BMN80028	Bkt, Int Cooler, Hor, D/S, IC, RE300	each	1		
240 BMN80029	Bkt, Int Cooler, Vert, D/S, IC, RE300	each	1		
250 BMN80030	Bkt, Air Inlet, Vert, D/S, IC, RE300	each	1		
255 BMN60007	Bkt, Sup, Air Filter, RE300, NAV466	each	1		
260 PUA84101	Pulley, Assy, Idler, P8/2B gr,7",STL,Plt	each	1		
270 PUA05002	Pulley, Assy, Idler,B/BX gr,5", ALUM,Plt	each	1		
280 PUL80076	Pulley, Idler, Backside, P8, 76d (89062)	each	3		
290 SCD01613	Spacer, Col, Drl,101.6mm x 25.4o x13.49i	each	1		
300 SCD25413	Spacer, Col, Drl,25.4mm x 25.4o x 13.49i	each	1		
310 SCD29012	Spacer, Col, Drl, 29mm x 25.4o x 12.3i	each	1		
320 SCD29213	Spacer, Col, Drl,29.21mm x 25.4o x 12.7i	each	2		
330 SCD39710	Spacer, Col, Drl, 39.7mm x 25.4o x 10.3i	each	1		
340 SLV17010	Sleeve, Pulley, 16.9o x 22.23mm x 10.32i	each	1		
350 SLV17012	Sleeve, Pulley, 16.9o x 22.23mm x 12.32i	each	1		
360 TEN00003	Tenr, Spring, Un-Direct, 90d, 1/2 x 4.5"	each	1		
370 WFS12001	Washer, Flat, Step, 12mm, 69.85, Plt	each	1		
380 BTS06400	Bolt, U, 3/8-16, 4.00 W/IS, Nut/PI, PLT	each	4		
390 CLP04000	Clamp, T bolt, Spring, 4", CAC	each	6		
410 HOA04083	Hose, Flex, CAC, 4.0d x 8.0, 3 ring	each	3		
420 TUS04059	Tube, Stl, Exh, 4"o.d., 59 deg U, 12x8.5	each	1		
430 TUS04094	Tube, Stl, Exh, 4"o.d., 90 deg elb, 10x51.5	each	1		
460 HOR03800	Hose, Heater, 3/8" ID, (250' - 80235GL)	feet	5.00		
470 FTP06090	Ftg, Pipe,Elb,1/4"npt to 3/8" barb,Brass	each	1		
480 FTS12001	Ftg, Adap, M12 x 1.5 x 1/4" fnpt, STL	each	1		
490 ORS12001	O Ring, Seal, 12 mm metric	each	1		
500 KBN84160	Bag Kit, Fasteners, KMN84160	each	1		

Bill of Materials Listing

TransArctic Canada Inc.

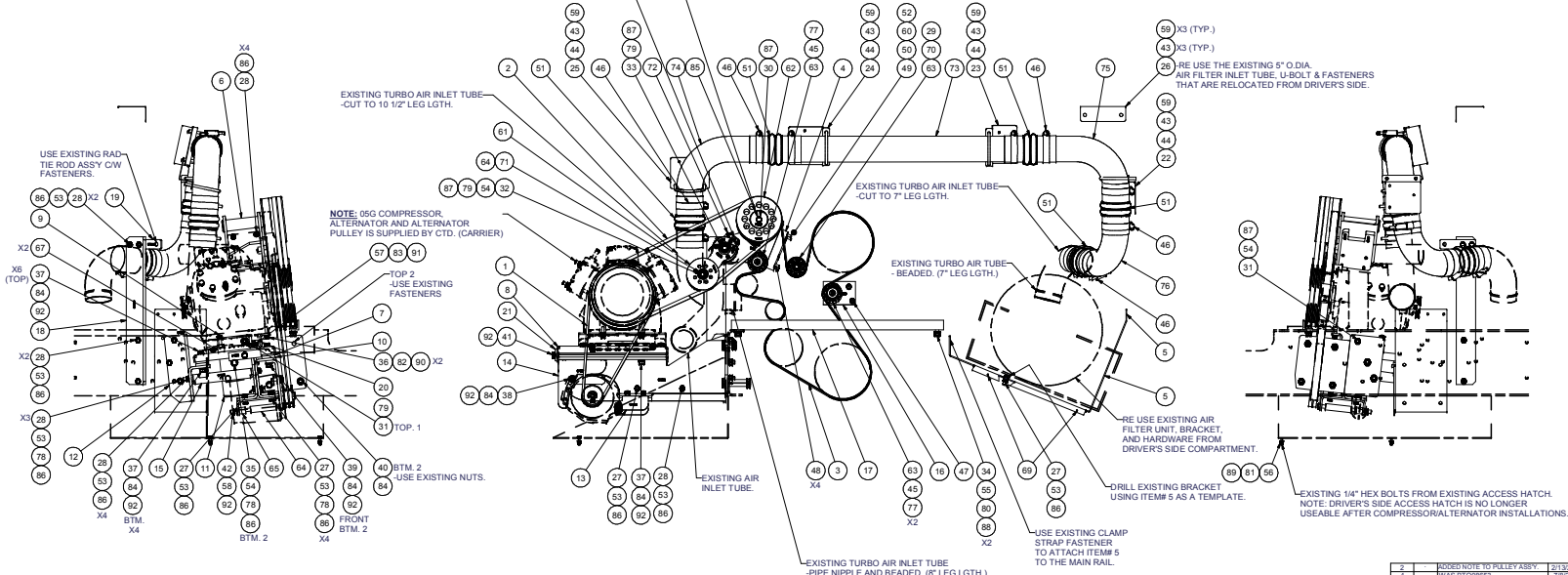
2/20/2009
Page 1 of 1

Product Number	Description	Date	Weight	Uof M	Yield
Line Component Prod#	Description	Bin Unit	Qty		
KBN84130	Bag Kit, Fasteners, KMN84130		9/10/2007	6.85	0
10 BTC12100	Bolt, Hex, 12 x 1.75 x 100mm, 10.9, Plt	each	1		
20 BTC12070	Bolt, Hex, 12 x 1.75 x 70mm, 10.9, Plt	each	3		
40 BTC10050	Bolt, Hex, 10 x 1.5 x 50mm, 10.9, Plt	each	6		
50 BTC10040	Bolt, Hex, 10 x 1.5 x 40mm, 10.9, Plt	each	4		
55 BTQ08151	Bolt, Hex, 1/2-20unf, 1.5", 8, Plt	each	1		
60 BTQ12250	Bolt, Hex, 3/4- 10unc, 2.50", 8, Plt	each	1		
65 BTQ10250	Bolt, Hex, 5/8-11unc, 2.5", 8, PLT	each	1		
70 BTQ10301	Bolt, Hex, 5/8-18unf, 3", 8, PLT	each	2		
80 BTQ08451	Bolt, Hex, 1/2-20unc, 4.5", 8, Plt	each	1		
90 BTQ08301	Bolt, Hex, 1/2-20unf, 3", 8, Plt	each	1		
100 BTQ08200	Bolt, Hex, 1/2-13unc, 2.0", 8, Plt	each	1		
110 BTQ08201	Bolt, Hex, 1/2-20unc, 2.0", 8, Plt	each	2		
120 BTQ08126	Bolt, Hex, 1/2-20unf, 1.25", 8, Plt	each	11		
130 BTQ06150	Bolt, Hex, 3/8-16unc, 1.50", 8, Plt	each	2		
140 BTP08653	Bolt, Hex, 1/2-13unc, 6.5", 5, Plt, FT	each	1		
150 NTA12000	Nut, Hex, 12 x 1.75, 8.8, Plt	each	4		
160 NTA10000	Nut, Hex, 10 x 1.5, 8.8, Plt	each	4		
165 NTL10000	Nut, Lock, Hex, 5/8-11unc, 9, Plt	each	1		
170 NTP12000	Nut, Hex, 3/4-10unc, 5, Plt	each	1		
180 NTP08000	Nut, Hex, 1/2-13unc, 5, Plt	each	1		
190 NTP07000	Nut, Hex, 7/16-14unc, 5, Plt	each	4		
200 WFA12000	Washer, Flat, 12mm, 8.8, Plt	each	4		
210 WFA10000	Washer, Flat, 10mm, 8.8, Plt	each	14		
220 WFQ12000	Washer, Flat, 3/4", 8, Plt	each	2		
230 WFQ10000	Washer, Flat, 5/8", 8, Plt	each	4		
240 WFQ08000	Washer, Flat, 1/2", 8, Plt	each	18		
250 WFN07000	Washer, Flat, 7/16", 2, Plt	each	4		
260 WFN06000	Washer, Flat, 3/8", 2, Plt	each	2		
270 WLA12000	Washer, Lock, 12mm, 8.8, Plt	each	4		
280 WLA10000	Washer, Lock, 10mm, 8.8, Plt	each	4		
290 WLP12000	Washer, Lock, 3/4", 5, Plt	each	1		
300 WLP08000	Washer, Lock, 1/2", 5, Plt	each	14		
310 WLP07000	Washer, Lock, 7/16", 5, Plt	each	4		
320 WLP06000	Washer, Lock, 3/8", 5, Plt	each	2		
330 WLQ10000	Washer, Lock, 5/8", 8, Plt	each	1		



TENSIONER INSTALLATION & ORIENTATION:
 RE-ASSEMBLE TENSIONER (IF REQUIRED) TO SUIT A/CW ROTATION (ARROW ALWAYS POINTS TO THE BELT THAT IS TO BE TENSIONED).
 THE FRONT SIDE IDLER PULLEY (AFTER BEING ASSEMBLED TO THE TENSIONER) IS TO BE IN THE 6 O'CLOCK POSITION (WITH NO TENSION ON THE SPRING) IN RELATION TO THE TENSIONER BASE.
 THE TENSIONER IS INSTALLED BY ALIGNING THE NOTCH IN THE BASE OF THE TENSIONER WITH THE 3/8" SQUARE BLOCK OF PART# BMN8003. (MAIN BRACKET WELDMENT) TIGHTEN TENSIONER FASTENER.
 INSTALL "BX" MATCHED BELTS, ALIGN AND ADJUST THE COMPRESSOR TO THE PROPER BELT TENSION THEN AFTER 3-5 MINUTES OF "RUN-IN" RE-MEASURE AND ADJUST BELT TENSION TO SUIT.

CAUTION:
 DO NOT OVER TORQUE.
 HAND TIGHTEN TO COMPRESS LOCKWASHER ONLY.
 USE SERVICABLE THREADLOCKER.



ITEM	QTY	U/M	PART NUMBER	DESCRIPTION
92	15	EACH	WLP08000	WASHER, LOCK, 1/2", 5, PLT
91	4	EACH	WLP07000	WASHER, LOCK, 7/16", 5, PLT
90	2	EACH	WLP06000	WASHER, LOCK, 3/8", 5, PLT
89	2	EACH	WLP04000	WASHER, LOCK, 1/4", 5, PLT
88	4	EACH	WLA14000	WASHER, LOCK, 14mm, 8.8, PLT
87	4	EACH	WLA12000	WASHER, LOCK, 12mm, 8.8, PLT
86	23	EACH	WLA10000	WASHER, LOCK, 10mm, 8.8, PLT
85	1	EACH	WFS12001	WASHER, FLAT, STEP, 12mm, 69.85, PLT
84	15	EACH	WFN08000	WASHER, FLAT, 1/2", 2, PLT
83	4	EACH	WFN07000	WASHER, FLAT, 7/16", 2, PLT
82	2	EACH	WFN06000	WASHER, FLAT, 3/8", 2, PLT
81	2	EACH	WFN04000	WASHER, FLAT, 1/4", 2, PLT
80	4	EACH	WFA14000	WASHER, FLAT, 14mm, 8.8, PLT
79	3	EACH	WFA12000	WASHER, FLAT, 12mm, 8.8, PLT
78	9	EACH	WFA10000	WASHER, FLAT, 10mm, 8.8, PLT
77	2	EACH	WDS17001	WASHER, DUST COVER (PULB0076)
76	1	EACH	TUS04093	TUBE, STL, EXH, 4" o.d., 90 deg ELB, 8.5x8
75	1	EACH	TUS04092	TUBE, STL, EXH, 4" o.d., 90 deg ELB, 12x8
74	1	EACH	TUS04091	TUBE, STL, EXH, 4" o.d., 90 deg ELB, 12x10
73	1	EACH	TUS04000-3700	TUBE, STL, EXH, 4" o.d. x 37"
72	1	EACH	TENR00003	TENR, SPRING, UN-DIRECT, 90d, 1/2 x 4.5"
71	1	EACH	SLV17012	SLEEVE, PULLEY, 16.9d x 22.23mm x 12.19h
70	1	EACH	SLV17010	SLEEVE, PULLEY, 16.9d x 22.23mm x 10.52h
69	2	EACH	SCH03075	SCREW, HEX, FLG, SDT, 1/4 x 1.75, ST, PLT
68	1	EACH	SCD39710	SPACER, COL, DRL, 39.7mm x 25.4d x 10.3l
67	2	EACH	SCD29213	SPACER, COL, DRL, 29.2mm x 25.4d x 12.7l
66	1	EACH	SCD29212	SPACER, COL, DRL, 29mm x 25.4d x 12.3l
65	1	EACH	SCD25413	SPACER, COL, DRL, 25.4mm x 25.4d x 13.49l
64	1	EACH	SCD1613	SPACER, COL, DRL, 101.8mm x 25.4d x 13.49l
63	3	EACH	PULB0076	PULLEY, IDLER, BACKSIDE, P8, 76D, 39W
62	1	EACH	PULB04101	PULLEY, ASSY, IDLER, P8/29 gr 7, STL, PLT
61	1	EACH	PJA05002	PULLEY, ASSY, IDLER, AB gr 5, ALUM, PLT
60	1	EACH	ORS12001	O RING, SEAL, 12 MM METRIC
59	18	EACH	NTS04001	NUT, RIV, 1/4-20 UNF
58	1	EACH	NTP09000	NUT, HEX, 1/2-13UNC, 5, PLT
57	4	EACH	NTP07000	NUT, HEX, 7/16-14UNC, 5, PLT
56	2	EACH	NTP04000	NUT, HEX, 1/4-20UNC, 5, PLT
55	4	EACH	NTA14000	NUT, HEX, 1/4 x 2, 8.8, PLT
54	2	EACH	NTA12000	NUT, HEX, 1/2 x 1.75, 8.8, PLT
53	18	EACH	NTA10000	NUT, HEX, 10 x 1.5, 8.8, PLT
52	5	FEET	HOR03800	HOSE, HEATER, 3/8" I.D. (2507-80235GL)
51	5	EACH	HOR04003	HOSE, FLEX, CAC, 1/4" O.D., 3, RING
50	1	EACH	FTS12001	FTG, ADAP, M12 x 1.5, 1/4" FNPT, STL
49	1	EACH	FTF06990	FTG, PIPE, ELB, 1/4" NPT TO 3/8" BARB, BRASS
48	4	EACH	CS808040	CAPSCREW, SH, 8 x 1.25 x 40mm, 12.9, PLT
47	4	EACH	CS808021	CAPSCREW, FH, 8 x 1.25 x 10mm, 10.9, PLT
46	10	EACH	CLP40000	CLAMP, T BOLT, SPRING, 4, CAC
45	2	EACH	BTS10001	BOLT, SHOULDER, 10mm (IDLER PULLEY)
44	4	EACH	BTS08400	Bolt, U, 3/8-16, 4.00 W/IS, Nut/PL, PLT
43	18	EACH	BTG14000	BOLT, HEX, FLG, SER, 1/4-20, 1, 8.2, PLT
42	1	EACH	BTG08800	BOLT, HEX, 1/2-13UNC x 8.00, 8, PLT
41	1	EACH	BTG06853	BOLT, HEX, 1/2-13UNC x 6.50, 5, PLT, FT
40	2	EACH	BTQ08401	BOLT, HEX, 1/2-20UNF x 4.00, 8, PLT
39	2	EACH	BTQ08151	BOLT, HEX, 1/2-20UNF x 1.50, 8, PLT
38	1	EACH	BTQ08150	BOLT, HEX, 1/2-13UNC x 1.50, 8, PLT
37	10	EACH	BTQ08126	BOLT, HEX, 1/2-20UNF x 1.25, 8, PLT
36	2	EACH	BTQ08150	BOLT, HEX, 3/8-16UNC, 1.50", 8, PLT
35	2	EACH	BTG14040	BOLT, HEX, 1/4 x 2, 40mm, 10.9, PLT
34	2	EACH	BTG14030	BOLT, HEX, 1/4 x 2.5, 30mm, 10.9, PLT
33	1	EACH	BTG12100	BOLT, HEX, 12 x 1.75 x 100mm, 10.9, PLT
32	1	EACH	BTG12080	BOLT, HEX, 12 x 1.75 x 80mm, 10.9, PLT
31	1	EACH	BTG12040	BOLT, HEX, 12 x 1.75 x 40mm, 10.9, PLT
30	1	EACH	BTG12030	BOLT, HEX, 12 x 1.75 x 30mm, 10.9, PLT
29	1	EACH	BTG10090	BOLT, HEX, 10 x 1.5 x 90mm, 10.9, PLT
28	16	EACH	BTG10040	BOLT, HEX, 10 x 1.5 x 40mm, 10.9, PLT
27	9	EACH	BTG10030	BOLT, HEX, 10 x 1.5 x 30mm, 10.9, PLT
26	1	EACH	BMN80030	BKT, AIR INLET, VERT, P/S, IC, RE300
25	1	EACH	BMN80029	BKT, INT COOLER, VERT, DIS, IC, RE300
24	1	EACH	BMN80028	BKT, INT COOLER, HOR, DIS, IC, RE300
23	1	EACH	BMN80027	BKT, INT COOLER, HOR, P/S, IC, RE300
22	1	EACH	BMN80026	BKT, INT COOLER, VERT, P/S, IC, RE300
21	1	EACH	BMN80025	BKT, COMP, PL, SLIDE, IC, RE300
20	1	EACH	BMN80024	BKT, COMP, FRT, Z, IC, RE300
19	1	EACH	BMN80023	BKT, MAIN, BRAC, IC, RE300
18	1	EACH	BMN80022	BKT, ANGLE, VERT, IC, RE300
17	1	EACH	BMN80021	BKT, ANGLE, CHASSIS, IC, RE300
16	1	EACH	BMN80020	BKT, B/S IDLER, MT, IC, RE300
15	1	EACH	BMN80019	BKT, MAIN, BRAC, IC, RE300
14	1	EACH	BMN80017	BKT, ALT, SLIDE, IC, RE300
13	1	EACH	BMN80016	BKT, ALT, CRADLE, IC, RE300
12	1	EACH	BMN80015	BKT, MAIN, REAR PL, IC, RE300
11	1	EACH	BMN80014	BKT, MAIN, FRONT REAR, IC, RE300
10	1	EACH	BMN80013	BKT, MAIN, FRONT PL, IC, RE300
9	1	EACH	BMN80010	BKT, MAIN, SLIDE, ASSY, IC, RE300
8	1	EACH	BMN80009	BKT, MAIN, BASE PL, IC, RE300
7	2	EACH	BMN80008	VIBRATION ISOLATOR, BAR, 16.83 x 2 x 1.63
6	1	EACH	BMN80003	BKT, MAIN, WELDMT, IC, RE300
5	1	EACH	BMN80007	BKT, SUP, AIR FILTER, RE300, NAV4466
4	1	EACH	BMN80001	BKT, SPACER, 17x46, CE300
3	1	EACH	REL83038	BELT, 8, 3038mm (119.5")
2	2	EACH	BEL12196	BELT, B gr, 1956mm (77") (BX74) MATCHED
1	2	EACH	BEL11410	BELT, A gr, 1410mm (55.5") (17555)

DRAWN		CHECKED		DATE		REV	
2	ADDENDUM TO PULLEY ASSY	2/13/2008	VAL	5/3/2006			
1	(WAS BTG0865)	7/8/2006	VAL	5/3/2006			
1	PREPARED BY PRODUCTION	10/26/2006	VAL				
1	CA						
REV	DESCRIPTION	DATE	BY	DATE	BY	DATE	BY
1			James Stewart	5/3/2006			
1			WFG	5/3/2006			
1			Vijal Lakshmi	5/3/2006			
1			APPROVED	5/3/2006			
1			Dale Mason	5/3/2006			

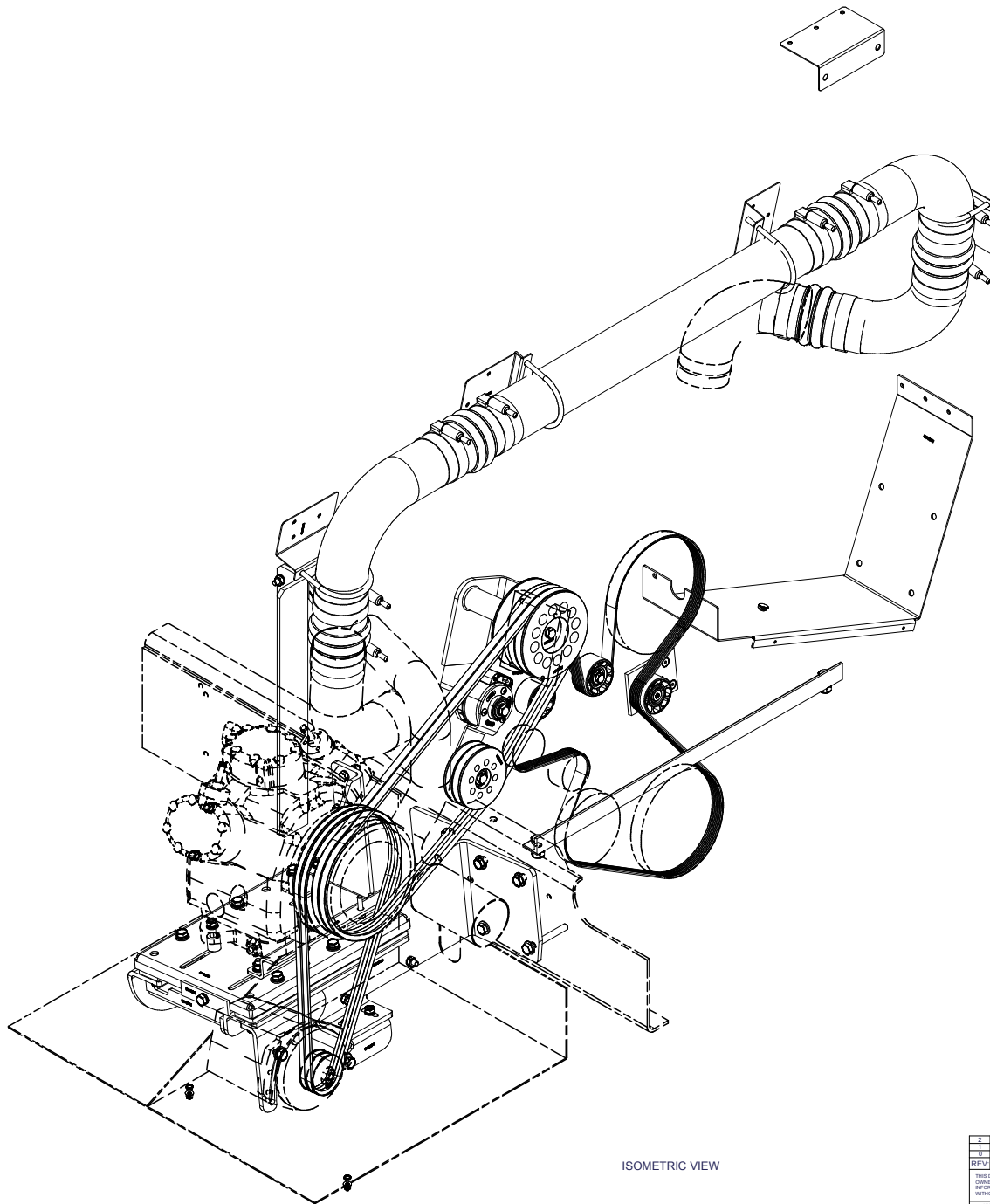
NOTES:
 1) USE SERVICABLE THREADLOCKER ON ALL FASTENERS TO ENGINE COMPONENTS AND TORQUE ALL BOLTS TO S.A.E. SPECIFICATIONS.
 2) SEE "TRANSARTIC A/C COMPRESSOR MOUNT INSTALLATION DISCLAIMER".

PROPERTY	TOLERANCES	UNIT
UNLESS OTHERWISE SPECIFIED	FRACTIONAL DECIMAL	MM
FINISH	AS MANUFACTURED	AS MANUFACTURED

SCALE	DWG NO	REV
1:8	KMN84160	2

TRANSARTIC INC.

Mt. Kit, DT466, RE300, 05G



ISOMETRIC VIEW

2		ADDED NOTE TO PULLEY ASSEMBLY	2/13/2006	WJL	5/3/2006				
1		BASE BT00805	7/26/05	WJL	5/3/2006				
0		PREPARED FOR PRODUCTION	12/20/05	GA					
REV	ECN	DESCRIPTION	DATE	BY	DATE				
				James Stewart	5/3/2006				
				MFG	5/3/2006				
				Vig Jakovlew	5/3/2006				
				APPROVED	5/3/2006				
				Dale Mason	5/3/2006				
<p>UNSPECIFIED TOLERANCES: DIMENSIONS: .0005 .001 .002 .003 .005 .010 .015 .030 .050 .100 .150 .300 .500 .750 1.000 ANGLES: ±.005° ±.010° ±.020° ±.050° ±.100° ±.150° ±.300° ±.500° ±.750° ±.1000°</p>						DRAWN VigJakovlew CHECKED Ron Ingram TITLE Mt. Kit, DT466, RE300, 05G DATE 5/3/2006 SCALE NTS DWG NO KMN84160 REV 2			
<p>THIS DRAWING CONTAINS PROPRIETARY CONFIDENTIAL INFORMATION OWNED BY TRANSARTIG CANADA INC. THE DOCUMENT AND THE INFORMATION IN IT ARE NOT TO BE USED, DISCLOSED OR REPRODUCED WITHOUT EXPRESS WRITTEN PERMISSION OF THE COMPANY.</p>						SIZE F SCALE NTS DWG NO KMN84160 REV 2			
<p>THIRD ANGLE PROJECTION</p>						DRAWING UNIT OF MEASURE MM (INCH) 2			

TRANSARTIG INC.

Mt. Kit, DT466, RE300, 05G

KMN84160

SHEET 2 OF 2



Air Filter and Air Intake stack is moved to curbside of bus. See Photos below

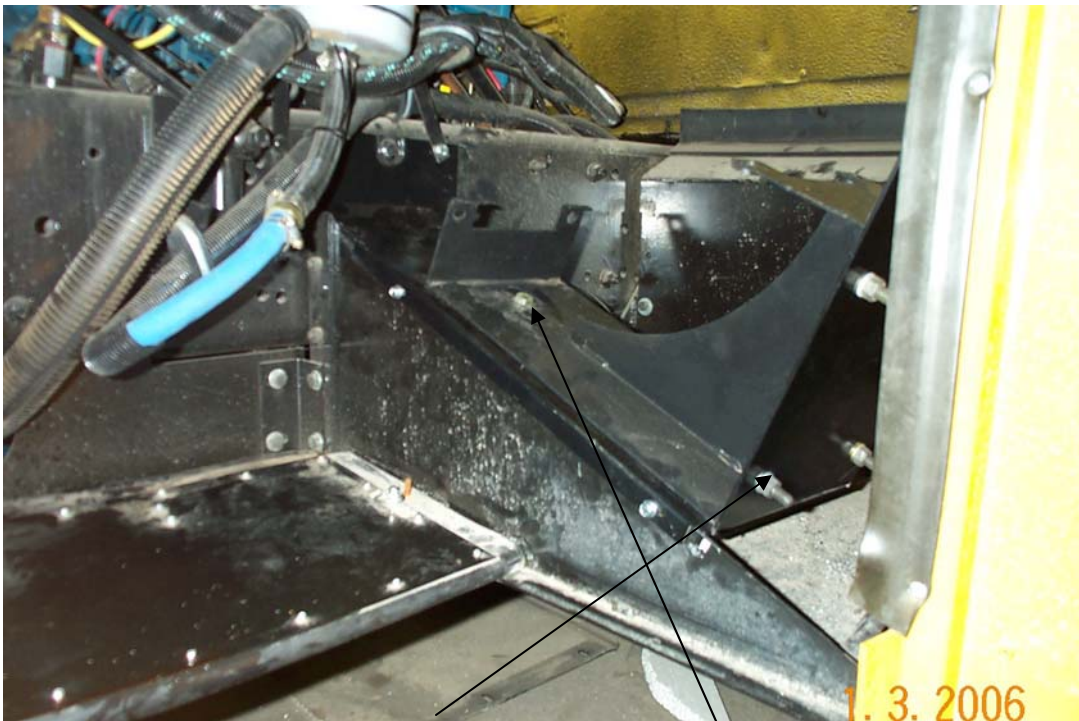


Cut Turbo inlet tube as show at white line. Debur and Clean all parts.

Remove OEM Air Filter and Bracket from Drivers side. This part used at air Filter



Navistar Air Filter brackets mounts on our BMN60007 bracket mounted on curbside.



Mount Air Filter bracket with 4 bolts then drill this bolt hole.



Bracket BMN80026 supplied in kit see Mount Drawing



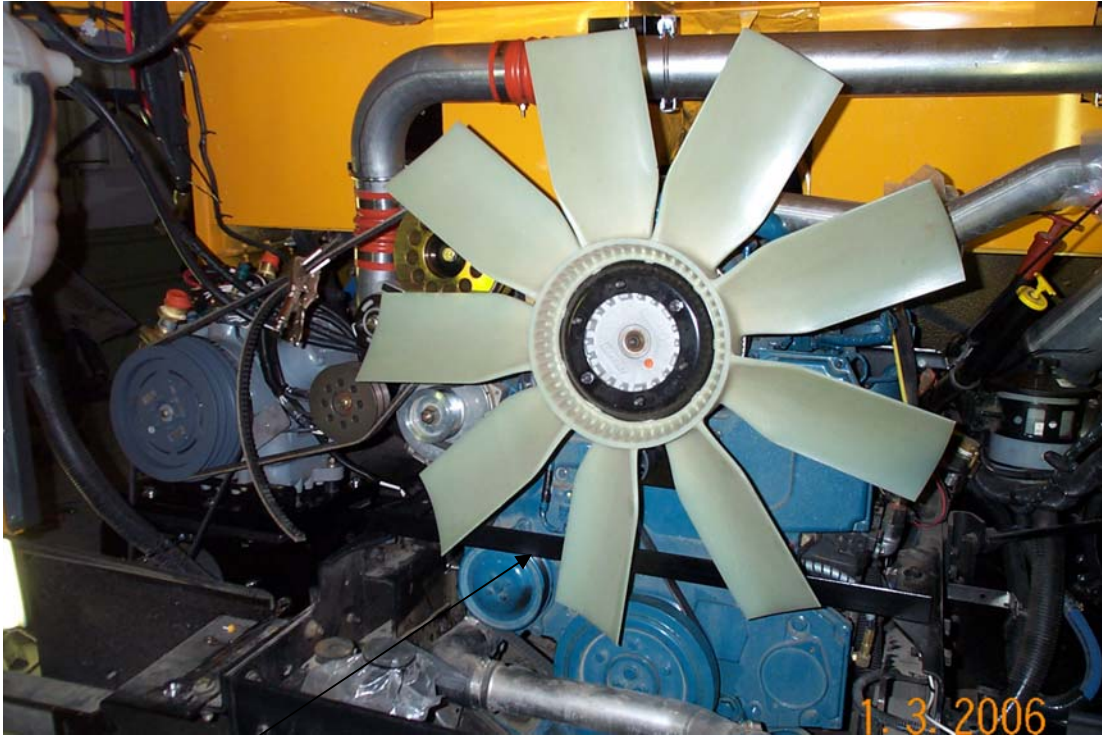
Note Air Filter rotation / This is the remnant part of the cut part



Install Air intake in curbside air intake cavity using BMN80030
Support Intake Tube on reinforced surfaces using supplied nutserts.



Install BMN80020 without removing Radiator. Install BMN60001 Spacer, BMN80003
Jackshaft bracket, Combo Pulley and idlers as per drawing. Install Brass Fitting, O-Ring,
Elbow and Overflow hose.



Install BMN80021 and tighten before installing Compressor brackets.



Install Main Compressor Brackets as per drawing.



Install BMN80022 Rad Support Bracket and re-assign Rad Support Rod from OEM position to new position on BMN80023 at top of Rad Support Bracket.



Install Compressor Mounting Plate, Compressor, Tensioner, Alternator and Belts as per drawing. Run Compressor and check pulleys and belts for alignment.

KMN84160 - Mt. Kit, DT466, RE300, 05G W/ALT
KMN82460 - Mt. Kit, DT466, RE300, 05K W/ALT
KMN82461 - Mt. Kit, DT466, RE300, 05K W/O ALT

DO NOT REMOVE RADIATOR

TransArctic A/C Compressor Mount Installation Disclaimer

All compressor mounts should be installed by qualified and trained personnel using proper tools and equipment in safe working conditions following industry standard guidelines for motor vehicle service and repair.

The installer of any compressor mount purchased from TransArctic must undertake all responsibility of issues arising from that compressor bracket being installed on any vehicle. Mount functionality, operation and durability can all be compromised by an incompetent installation.

Due to the many different situations, parameters and application criteria, which are beyond the compressor mount manufacturer's control, TransArctic does not warrant design, durability, or operational functionality of any compressor mount improperly installed by another party.

With no implied guarantees it is the mount installer's strict responsibility to determine safety and functionality, of the compressor mount, at the time of installation.

Please contact TransArctic with any issue arising from installation so we may better improve the product. If you have any reservations about the compressor mount integrity contact TransArctic immediately at 1-877-COLD-AIR.