

Bill of Materials Listing

TransArctic Canada Inc.

2/12/2015
Page 1 of 1

Product Number	Description	Date	Weight	Uof M	Yield
Line Component Prod#	Description	Bin Unit	Qty		
KMC83991	Mt Kit, HDX, ISC, 4xFC,2B/2A,8" Crank,'12		9/12/2012	145.53	0
10	PAC23150	Pack, Carton, 23" x 15" x 10", 51 ECT	each	1	
15	BEL32007	Belt, Banded B gr,2007mm (79") (RBX76-2)	each	1	
20	KBB00001	Mt Kit, Platform, Transit, ADM, '12	each	1	
30	KCB03901	Kit, Compressor, 4xFC/ FK40, '12	each	1	
40	KFT00001	Kit, Found'n, HDX, 4xFC, '12	each	1	
50	KPC83004	Kit, Pulley, ISC, 2A/2B, HDX, '12	each	1	

Bill of Materials Listing

TransArctic Canada Inc.

3/17/2015
Page 1 of 1

Product Number	Description	Date	Weight	Uof M	Yield
Line Component Prod#	Description	Bin Unit	Qty		
KBB00001	Mt Kit, Platform, Transit, ADM, '12	6/20/2012	76.04		0
10 BMZ01034	Bkt, Spring, Support Arm, ADM, '12	each	1		
20 BMZ01035	Bkt, Main, Pivot, Ass'y, ADM Transit,'12	each	1		
30 BMZ01037	Bkt, Fork, Knuckle-Joint, Adm, '12	each	1		
40 BMZ01038	Bkt, Main, Base Pl, ADM, '12	each	1		
50 BMZ01040	Bkt, Ass'y, THRD Rod, Isolator, ADM, '12	each	1		
60 BMZ01041	Shaft Key, 8mm W x 8mm H x 13.7mm Long	each	2		
70 BMZ01042	Vibration Isolator, Bar, 9.63 x 2 x 1.50	each	2		
80 BMZ01044	Bkt, Cradle, Pivot, Adm Transit, '12	each	1		
90 BMZ01047	Bkt, Bar, Slide Nut, ADJ, Trans ADM, '12	each	2		
100 BTS08100	Bolt, Grease,Nipple,1/2-13 x 1.0"	each	1		
105 FTS04007	Ftg, Grease, Nipple, 1/4-28 UNF-2A,Brass	each	1		
110 PIS01010	Shaft, Stl, Grease, ADM Transit, '12	each	1		
120 SPR00002	Spring, Comp, R/H, 110 x 50 x 8.4, Red	each	1		
130 WFS16001	Washer, Flat, Dbl Step, 17mm, 50mm, Plt	each	1		
140 WFS27001	Washer, Flat, Dbl Step, 27mm, 63.5, Plt	each	1		
150 KBB00025	Bag Kit, Fasteners, KBB00001	each	1		

NOTE:

Use Blue "Loctite" on the (4) fasteners to fasten BMZ01034 in place.

Bill of Materials Listing

TransArctic Canada Inc.

3/17/2015
Page 1 of 1

Product Number	Description	Date	Weight	Uof M	Yield
Line Component Prod#	Description	Bin Unit	Qty		
KBB00025	Bag Kit, Fasteners, KBB00001		8/1/2012	3.98	0
5	BTQ08101		Bolt, Hex, 1/2-20unf, 1.00", 8, Plt	each	6
10	BTQ08126		Bolt, Hex, 1/2-20unf, 1.25", 8, Plt	each	6
15	BTQ08100		Bolt, Hex, 1/2-13unc, 1.00", 8, Plt	each	1
20	BTQ08150		Bolt, Hex, 1/2-13unc, 1.5", 8, Plt	each	9
30	BTQ10351		Bolt, Hex, 5/8-18unf, 3.5", 8, PLT	each	1
50	NTQ08000		Nut, Hex, 1/2-13unc, 8, Plt	each	5
60	NTQ10000		Nut, Hex, 5/8-11unc, 8, Plt	each	2
65	NTQ10001		Nut, Hex, 5/8-18unf, 8, Plt	each	1
70	WFS08001		Washer, Flat, 1/2", 8, USS, Plt	each	2
100	WFQ08000		Washer, Flat, 1/2", 8, Plt	each	14
110	WFQ10000		Washer, Flat, 5/8", 8, Plt	each	2
120	WLQ08000		Washer, Lock, 1/2", 8, Plt	each	23
130	WLQ10000		Washer, Lock, 5/8", 8, Plt	each	2

Bill of Materials Listing

TransArctic Canada Inc.

3/17/2015
Page 1 of 1

Product Number		Description	Bin	Date	Weight	Uof M	Yield
Line	Component Prod#	Description		Unit	Qty		
KCB03901		Kit, Compressor, 4xFC/ FK40, '12		10/2/2012	0.99		0
10	BTQ08250	Bolt, Hex, 1/2-13unc, 2.5", 8, Plt		each	4		
20	NTQ08000	Nut, Hex, 1/2-13unc, 8, Plt		each	4		
30	WFQ08000	Washer, Flat, 1/2", 8, Plt		each	4		
40	WLQ08000	Washer, Lock, 1/2", 8, Plt		each	4		

Bill of Materials Listing

TransArctic Canada Inc.

3/17/2015
Page 1 of 1

Product Number		Description	Bin	Date	Weight	Uof M	Yield
Line	Component Prod#	Description		Unit	Qty		
KFT00001		Kit, Found'n, HDX, 4xFC, '12		8/20/2012	49.16		0
10	BMZ01053	Bkt, Weldm't, Platform box,HDX, ISC, '12		each	1		
20	BMZ01058	Bkt, Knuckle-Joint, Support,TH, HDX, '12		each	1		
30	BMZ01059	Bkt, Slide, Block, TH, HDX, '12		each	1		
40	BMZ01061	Bkt, Adapter, Spacer PI, TH, HDX, '12		each	2		
50	KTT00002	Kit, Tensioner Bracket,Ass'y,TH,HDX, '12		each	1		
60	KBT00003	Bag Kit, Fasteners, KFT00001		each	1		

Bill of Materials Listing

TransArctic Canada Inc.

3/17/2015
Page 1 of 1

Product Number		Description	Bin	Date	Weight	Uof M	Yield
Line	Component	Prod#	Description	Unit	Qty		
KBT00003		Bag Kit, Fasteners, KFT00001		10/25/2012	1.10		0
10	BTQ06175		Bolt, Hex, 3/8-16unc, 1.75", 8, Plt	each	9		
20	NTQ06000		Nut, Hex, 3/8-16unc, 8, Plt	each	9		
30	WFN06000		Washer, Flat, 3/8", 2, Plt	each	18		
40	WLQ06000		Washer, Lock, 3/8", 8, Plt	each	9		

Bill of Materials Listing

TransArctic Canada Inc.

3/17/2015
Page 1 of 1

Product Number	Description	Date	Weight	Uof M	Yield
Line Component Prod# Description	Bin	Unit	Qty		
KTT00002	Kit, Tensioner Bracket, Ass'y, TH, HDX, '12	10/24/2012	17.09		0
10 BMZ01056	Bkt, FRT, Weldmt, Angle, TH, HDX, '12	each	1		
20 PUA05012	Pulley, Assy, Idler, B/BX gr, 5", STL, Plt	each	1		
30 PUL80074	Pulley, Idler, B/S, Wide, 76d (89102)	each	1		
40 SCD21912	Spacer, Col, Drl, 21.9mm x 25.4o x 12.3i	each	1		
50 SCD25412	Spacer, Col, Drl, 25.4mm x 25.4o x 12.3i	each	1		
60 SLV17012	Sleeve, Pulley, 16.9o x 22.23mm x 12.32i	each	2		
70 KBT00002	Bag Kit, Fasteners, KTT00002	each	1		

Bill of Materials Listing

TransArctic Canada Inc.

3/17/2015
Page 1 of 1

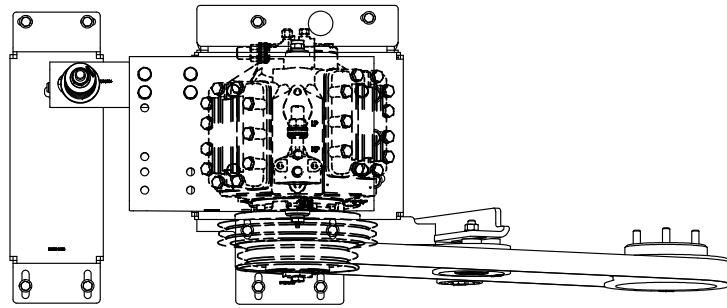
Product Number	Description	Date	Weight	Uof M	Yield
Line Component Prod# Description	Bin	Unit	Qty		
KBT00002	Bag Kit, Fasteners, KTT00002	10/24/2012	0.56		0
10 BTC12080	Bolt, Hex, 12 x 1.75 x 80mm, 10.9,Plt,FT	each	2		
20 BTQ06125	Bolt, Hex, 3/8-16unc, 1.25", 8, Plt	each	2		
30 NTA12000	Nut, Hex, 12 x 1.75, 8.8, Plt	each	2		
50 WFN06000	Washer, Flat, 3/8", 2, Plt	each	2		
55 WFS07000	Washer, Flat, 7/16", 8, USS, Plt	each	2		
60 WLA12000	Washer, Lock, 12mm, 8.8, Plt	each	2		

Bill of Materials Listing

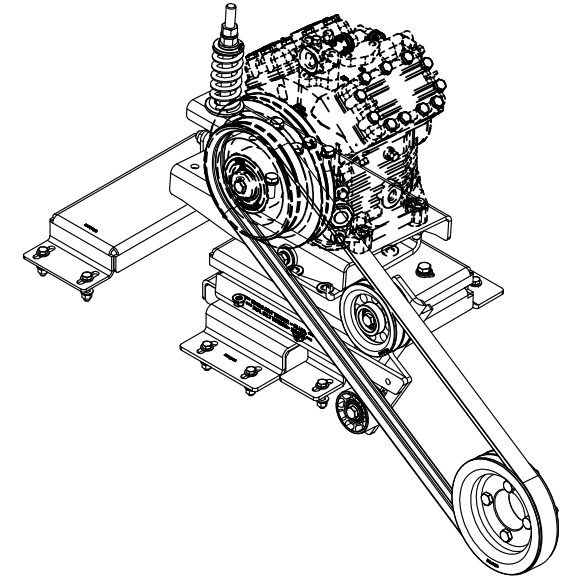
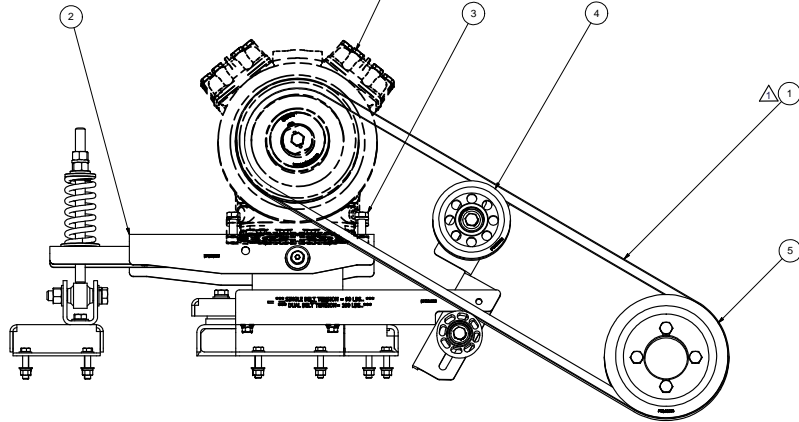
TransArctic Canada Inc.

3/17/2015
Page 1 of 1

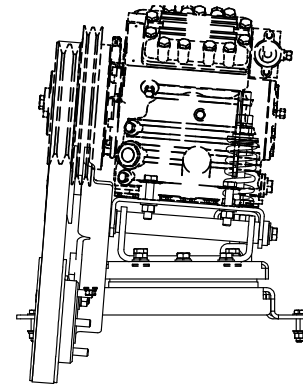
Product Number	Description	Date	Weight	Uof M	Yield
Line Component Prod#	Description	Bin Unit	Qty		
KPC83004	Kit, Pulley, ISC, 2A/2B, HDX, '12		10/19/2007	17.34	0
10	PUL83004		each	1	
20	BTC12060		each	4	



NOTE:
SHOWING COMPRESSOR
4xFCY OR
FK40 xxx
AS REFERENCE.



ISOMETRIC VIEW



NOTES:

- 1) USE SERVICABLE THREADLOCKER ON ALL FASTENERS TO ENGINE COMPONENTS AND TORQUE ALL BOLTS TO S.A.E. SPECIFICATIONS.
- 2) SEE "TRANSARCTIC A/C COMPRESSOR MOUNT INSTALLATION DISCLAIMER".

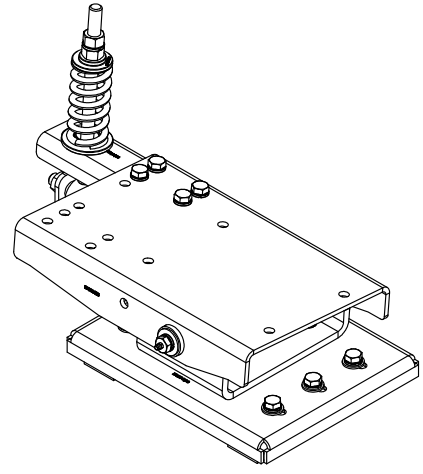
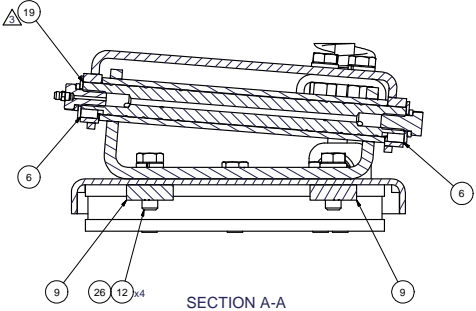
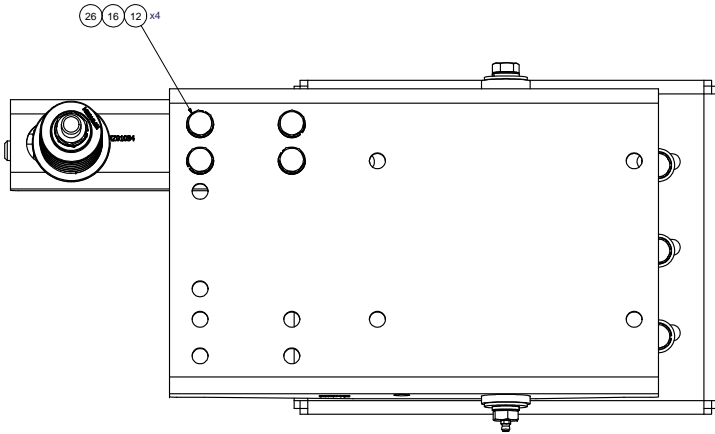
ITEM	QTY	U/M	PART NUMBER	DESCRIPTION
5	1	EACH	KPC83004	KIT, PULLEY, ISC, 2A/2B, HDX, '12
4	1	EACH	KFT00001	KIT, FOUNDN, HDX, 4xFC, '12
3	1	EACH	KCB03901	MT KIT, COMP, 4xFC/FK40, '12
2	1	EACH	KBB00001	MT KIT, PLATFORM, TRANSIT, ADM, '12
1	1	EACH	BEL32007	BELT, BANDED B GR, 2007mm (79") (RBX76-2)

TRANSARCTIC INC.

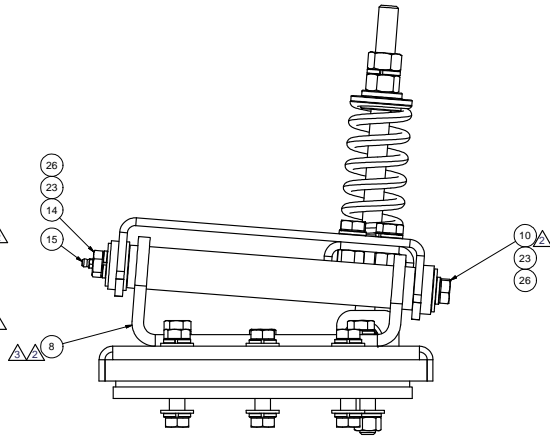
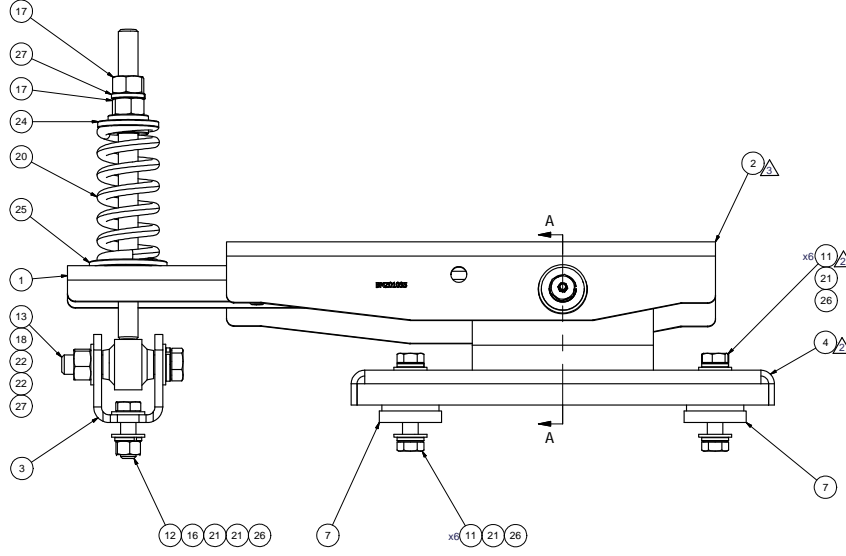
REV	ECN	DESCRIPTION	DATE	BY
1		WAS P/N# BEL 22007	4/16/2015	JRR
2		RELEASED TO PRODUCTION	11/5/2012	JRR
3				Vaj_Jakowlew
4				James Stewart
5				Ron Ingram
6				Dale Mason

DRAWN		CHECKED		DATE		BY	
jrodriquez		11/5/2012		11/5/2012		Vaj_Jakowlew	
TITLE		DATE		BY			
MT KIT, HDX, ISC, 4xFC, 2B/2A, 8"		11/5/2012		11/5/2012		James Stewart	
CRANK, '12						Ron Ingram	
DATE APPROVED		11/5/2012				Dale Mason	
UNSPECIFIED TOLERANCES:		H/1.6mm		H/0.5mm			
ONE DECIMAL PLACE (X.1)		.05		.02			
TWO DECIMAL PLACE (X.01)		.02		.01			
THREE DECIMAL PLACE (X.001)		.01		.005			
FRACTIONAL (1/16")		.001		.001			
FRACTIONAL (1/32")		.001		.001			
FRACTIONAL (1/64")		.001		.001			
FRACTIONAL (1/128")		.001		.001			
FRACTIONAL (1/256")		.001		.001			
FRACTIONAL (1/512")		.001		.001			
FRACTIONAL (1/1024")		.001		.001			
FRACTIONAL (1/2048")		.001		.001			
FRACTIONAL (1/4096")		.001		.001			
FRACTIONAL (1/8192")		.001		.001			
FRACTIONAL (1/16384")		.001		.001			
FRACTIONAL (1/32768")		.001		.001			
FRACTIONAL (1/65536")		.001		.001			
FRACTIONAL (1/131072")		.001		.001			
FRACTIONAL (1/262144")		.001		.001			
FRACTIONAL (1/524288")		.001		.001			
FRACTIONAL (1/1048576")		.001		.001			
FRACTIONAL (1/2097152")		.001		.001			
FRACTIONAL (1/4194304")		.001		.001			
FRACTIONAL (1/8388608")		.001		.001			
FRACTIONAL (1/16777216")		.001		.001			
FRACTIONAL (1/33554432")		.001		.001			
FRACTIONAL (1/67108864")		.001		.001			
FRACTIONAL (1/134217728")		.001		.001			
FRACTIONAL (1/268435456")		.001		.001			
FRACTIONAL (1/536870912")		.001		.001			
FRACTIONAL (1/1073741824")		.001		.001			
FRACTIONAL (1/2147483648")		.001		.001			
FRACTIONAL (1/4294967296")		.001		.001			
FRACTIONAL (1/8589934592")		.001		.001			
FRACTIONAL (1/17179869184")		.001		.001			
FRACTIONAL (1/34359738368")		.001		.001			
FRACTIONAL (1/68719476736")		.001		.001			
FRACTIONAL (1/137438953472")		.001		.001			
FRACTIONAL (1/274877906944")		.001		.001			
FRACTIONAL (1/549755813888")		.001		.001			
FRACTIONAL (1/1099511627776")		.001		.001			
FRACTIONAL (1/2199023255552")		.001		.001			
FRACTIONAL (1/4398046511104")		.001		.001			
FRACTIONAL (1/8796093022208")		.001		.001			
FRACTIONAL (1/17592186044416")		.001		.001			
FRACTIONAL (1/35184372088832")		.001		.001			
FRACTIONAL (1/70368744177664")		.001		.001			
FRACTIONAL (1/140737488355328")		.001		.001			
FRACTIONAL (1/281474976710656")		.001		.001			
FRACTIONAL (1/562949953421312")		.001		.001			
FRACTIONAL (1/1125899906842624")		.001		.001			
FRACTIONAL (1/2251799813685248")		.001		.001			
FRACTIONAL (1/4503599627370496")		.001		.001			
FRACTIONAL (1/9007199254740992")		.001		.001			
FRACTIONAL (1/18014398509481984")		.001		.001			
FRACTIONAL (1/36028797018963968")		.001		.001			
FRACTIONAL (1/72057594037927936")		.001		.001			
FRACTIONAL (1/144115188075855872")		.001		.001			
FRACTIONAL (1/288230376151711744")		.001		.001			
FRACTIONAL (1/576460752303423488")		.001		.001			
FRACTIONAL (1/1152921504606846976")		.001		.001			
FRACTIONAL (1/2305843009213693952")		.001		.001			
FRACTIONAL (1/4611686018427387904")		.001		.001			
FRACTIONAL (1/9223372036854775808")		.001		.001			
FRACTIONAL (1/18446744073709551616")		.001		.001			
FRACTIONAL (1/36893488147419103232")		.001		.001			
FRACTIONAL (1/73786976294838206464")		.001		.001			
FRACTIONAL (1/147573952589676412928")		.001		.001			
FRACTIONAL (1/295147905179352825856")		.001		.001			
FRACTIONAL (1/5902958103587056517088")		.001		.001			
FRACTIONAL (1/11805916207174113034176")		.001		.001			
FRACTIONAL (1/23611832414348226068352")		.001		.001			
FRACTIONAL (1/47223664828696452136704")		.001		.001			
FRACTIONAL (1/94447329657392904273408")		.001		.001			
FRACTIONAL (1/188894659346785808546816")		.001		.001			
FRACTIONAL (1/377789318693571617093632")		.001		.001			
FRACTIONAL (1/755578637387143234187264")		.001		.001			
FRACTIONAL (1/1511157274774286468374528")		.001		.001			
FRACTIONAL (1/3022314549548572936749056")		.001		.001			
FRACTIONAL (1/6044629099097145873498112")		.001		.001			
FRACTIONAL (1/12089258198194291746996224")		.001		.001			
FRACTIONAL (1/24178516396388583493992448")		.001		.001			
FRACTIONAL (1/48357032792777166987984896")		.001		.001			
FRACTIONAL (1/96714065585554333975969792")		.001		.001			
FRACTIONAL (1/193428131171108667951939584")		.001		.001			
FRACTIONAL (1/386856262342217335903879168")		.001		.001			
FRACTIONAL (1/773712524684434671807758336")		.001		.001			
FRACTIONAL (1/1547425049368869343615516672")		.001		.001			
FRACTIONAL (1/3094850098737738687231033344")		.001		.001			
FRACTIONAL (1/6189700197475477374462066688")		.001		.001			
FRACTIONAL (1/12379400394950954748924133376")		.001		.001			
FRACTIONAL (1/24758800789901909497848266752")		.001		.001			
FRACTIONAL (1/49517601579803818995696533504")		.001		.001			
FRACTIONAL (1/99035203159607637991393067008")		.001		.001			
FRACTIONAL (1/198070406319215275982786134016")		.001		.001			
FRACTIONAL (1/396140812638430551965572268032")		.001		.001			
FRACTIONAL (1/792281625276861103931144536064")		.001		.001			
FRACTIONAL (1/1584563250553722207862289072128")		.001		.001			
FRACTIONAL (1/3169126501107444415724578144256")		.001		.001			
FRACTIONAL (1/6338253002214888831449156288512")		.001		.001			
FRACTIONAL (1/1267650600442977766289831257024")		.001		.001			
FRACTIONAL (1/2535301200885955532579662514048")		.001		.001			
FRACTIONAL (1/5070602401771911065159325028096")		.001		.001			
FRACTIONAL (1/10141204803543822130318650116192")		.001		.001			
FRACTIONAL (1/20282409607087644260637300232384")		.001		.001			
FRACTIONAL (1/40564819214175288521274600464768")		.001		.001			
FRACTIONAL (1/81129638428350577042549200929536")		.001		.001			
FRACTIONAL (1/16225927685670114408509840185872")		.001		.001			
FRACTIONAL (1/32451855371340228817019680371744")		.001		.001			
FRACTIONAL (1/64903710742680457634039360743488")		.001		.001			
FRACTIONAL (1/12980742148536091526807872148976")		.001		.001			
FRACTIONAL (1/25961484297072183053615744297952")		.001		.001			
FRACTIONAL (1/51922968594144366107231488595904")		.001		.001			
FRACTIONAL (1/103845937182888732214462971918208")		.001		.001			
FRACTIONAL (1/207691874365777464428925943836416")		.001		.001			
FRACTIONAL (1/415383748731554928857851877672832")		.001		.001			
FRACTIONAL (1/830767497463109857715703755345664")		.001		.001			
FRACTIONAL (1/1661534994926219715431407510711328")		.001		.001			
FRACTIONAL (1/3323069989852439430862815021422656")		.001		.001			
FRACTIONAL (1/664613997970487886172563004284512")		.001		.001			
FRACTIONAL (1/1329227995940975772345126008570048")		.001		.001			
FRACTIONAL (1/2658455991881951544690252017140096")		.001		.001			
FRACTIONAL (1/5316911983763903089380504034280192")		.001		.001			
FRACTIONAL (1/10633823967527806178761008068560384")		.001		.001			
FRACTIONAL (1/21267647935055612357522016137200768")		.001		.001			
FRACTIONAL (1/42535295870111224715044032274401536")		.001		.001			
FRACTIONAL (1/8507059174022244943008806454880272")		.001		.001			
FRACTIONAL (1/17014118348044489886017612909760544")		.001		.001			
FRACTIONAL (1/34028236696088979772035225819521088")		.001		.001			
FRACTIONAL (1/68056473392177959544070451639042176")		.001		.001			
FRACTIONAL (1/136112946784355919088140903278084352")		.001		.001			
FRACTIONAL (1/272225893568711838176281806556168704")		.001		.001			
FRACTIONAL (1/544451787137423676352563613112337408")		.001		.001			
FRACTIONAL (1/1088903574274847352705127226224674816")		.001		.001			
FRACTIONAL (1/2177807148549694705410254452449349632")		.001		.001			
FRACTIONAL (1/4355614297099389410820508904898699264")		.001		.001			

8 7 6 5 4 3 2 1



ISOMETRIC VIEW
SCALE 1/3



ITEM	QTY	U/M	PART NUMBER	DESCRIPTION
27	2	EACH	WLO10000	WASHER, LOCK, 5/8", 8, PLT
26	23	EACH	WLO08000	WASHER, LOCK, 1/2", 8, PLT
25	1	EACH	WFS27001	WASHER, FLAT, DBL STEP, 28mm, 63.5, PLT
24	1	EACH	WFS16001	WASHER, FLAT, DBL STEP, 16mm, 50mm, PLT
23	2	EACH	WFS08001	WASHER, FLAT, 1/2", 8, USS, PLT
22	2	EACH	WFO10000	WASHER, FLAT, 5/8", 8, PLT
21	14	EACH	WFO08000	WASHER, FLAT, 1/2", 8, PLT
20	1	EACH	SFRO0002	SPRING, COMP, RH, 110 x 50 x 8.4, RED
19	1	EACH	PISO1010	PIPE, STL, GREASE, ADM TRANSIT, '12
18	1	EACH	NTI010001	NUT, HEX, 5/8-11UNC, 8, PLT
17	2	EACH	NTI00000	NUT, HEX, 5/8-11UNC, 8, PLT
16	5	EACH	NTO08000	NUT, HEX, 1/2-13UNC, 8, PLT
15	1	EACH	FTS04007	FTG, GREASE, NIPPLE, 1/4-28 UNF-2A, BRASS
14	1	EACH	BTS08100	BOLT, GREASE, NIPPLE, 1/2-13 x 1.00"
13	1	EACH	BTO10351	BOLT, HEX, 5/8-18UNC x 3.50, 8, PLT
12	9	EACH	BTO08150	BOLT, HEX, 1/2-13UNC x 1.50, 8, PLT
11	12	EACH	BTO08126	BOLT, HEX, 1/2-20UNC x 1.25, 8, PLT
10	1	EACH	BTO08100	BOLT, HEX, 1/2-13UNC x 1.00, 8, PLT
9	2	EACH	BMZ01047	BKT, BAR, SLIDE NUT, ADJ, TRANS ADM, '12
8	1	EACH	BMZ01044	BKT, ASSY, CRADLE, PIVOT, ADM TRANSIT, '12
7	2	EACH	BMZ01042	VIBRATION ISOLATOR, BAR, 9.63 x 2 x 1.50
6	2	EACH	BMZ01041	SHAFT KEY, 8mm WIDE x 7mm HIGH x 13.7mm LONG
5	1	EACH	BMZ01040	BKT, ASSY, THRD ROD, ISOLATOR, ADM, '12
4	1	EACH	BMZ01038	BKT, MAIN, BASE PL, ADM, '12
3	1	EACH	BMZ01037	BKT, FORK, KNUCKLE-JOINT, ADM, '12
2	1	EACH	BMZ01035	BKT, MAIN, PIVOT, ASSY, ADM TRANSIT, '12
1	1	EACH	BMZ01034	BKT, SPRING, SUPPORT ARM, ADM, '12

TRANSARGTIG INC.

REV	DATE	BY	DESCRIPTION
3	7/3/2012	JRR	REVISED BMZ01038/44 & PISO1010
2	6/16/2012	JRR	REVISED BMZ01038/44 WITH BTO08100
1	8/30/2011	JRR	GENERAL REVISION
0	7/3/2012	JRR	RELEASED TO PRODUCTION

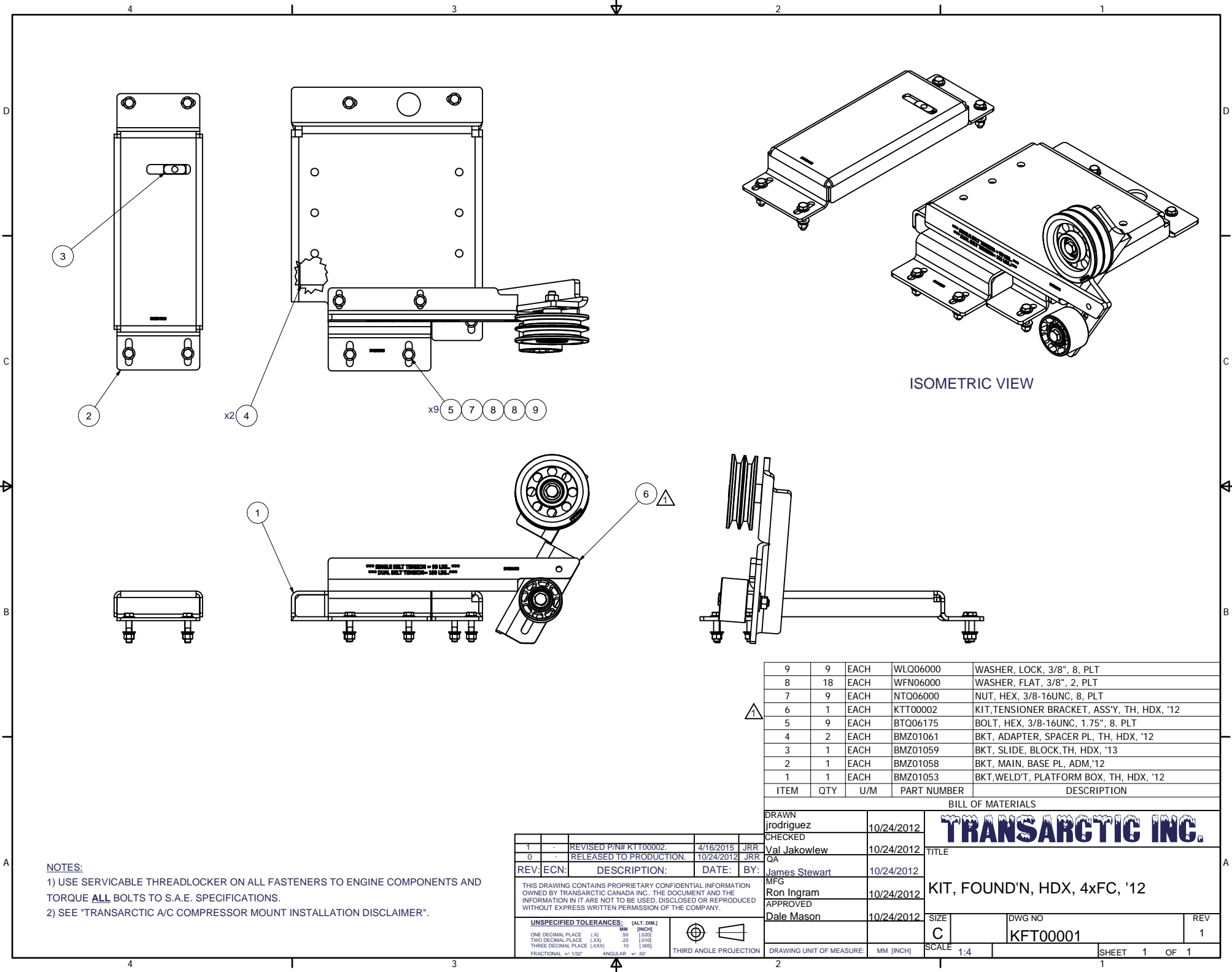
DATE: 7/3/2012
 BY: JRR
 APPROVED: Ron Ingram
 DRAWN: JRodriguez
 CHECKED: Val Jakowlew
 TITLE: MT KIT, PLATFORM, TRANSIT, ADM, '12
 SIZE: D
 DWG NO: KBB00001
 REV: 3
 SCALE: 1:2
 SHEET: 1 OF 1

NOTES:
 1) USE SERVICABLE THREADLOCKER ON ALL FASTENERS TO ENGINE COMPONENTS AND TORQUE ALL BOLTS TO S.A.E. SPECIFICATIONS.
 2) SEE 'TRANSARGTIG A/C COMPRESSOR MOUNT INSTALLATION DISCLAIMER'.

UNSPECIFIED TOLERANCES:	MM (INCH)
ONE DECIMAL PLACE (X1)	0.1 (0.004)
TWO DECIMAL PLACE (X2)	0.05 (0.002)
THREE DECIMAL PLACE (X3)	0.025 (0.001)
FRACTIONAL (1/16")	ANGULAR ± 30'



DRAWING UNIT OF MEASURE: MM (INCH)



ISOMETRIC VIEW

ITEM	QTY	U/M	PART NUMBER	DESCRIPTION
9	9	EACH	WLQ06000	WASHER, LOCK, 3/8", 8, PLT
8	18	EACH	WFN06000	WASHER, FLAT, 3/8", 2, PLT
7	9	EACH	NTQ06000	NUT, HEX, 3/8-16UNC, 8, PLT
6	1	EACH	KTT00002	KIT, TENSIONER BRACKET, ASS'Y, TH, HDX, '12
5	9	EACH	BTQ06175	BOLT, HEX, 3/8-16UNC, 1.75", 8, PLT
4	2	EACH	BMZ01061	BKT, ADAPTER, SPACER PL, TH, HDX, '12
3	1	EACH	BMZ01059	BKT, SLIDE, BLOCK, TH, HDX, '13
2	1	EACH	BMZ01058	BKT, MAIN, BASE PL, ADM, '12
1	1	EACH	BMZ01053	BKT, WELD'T, PLATFORM BOX, TH, HDX, '12

BILL OF MATERIALS

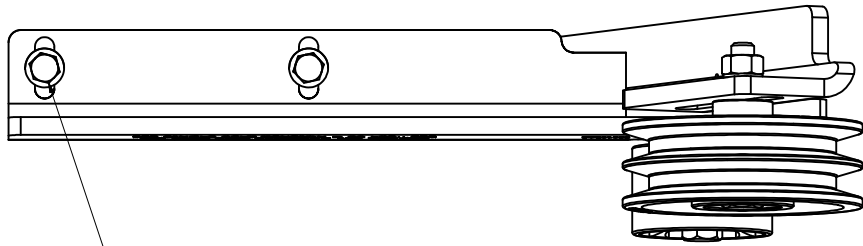
TRANSARCTIC INC.

DRAWN	jrodriguez	10/24/2012
CHECKED	Val Jakowlew	10/24/2012
APPROVED	James Stewart	10/24/2012
APPROVED	Ron Ingram	10/24/2012
APPROVED	Dale Mason	10/24/2012

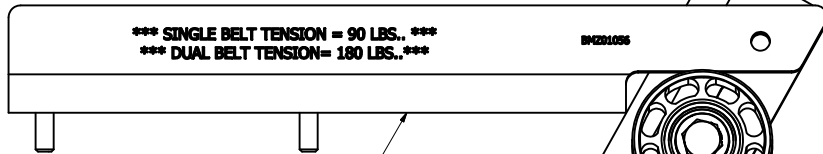
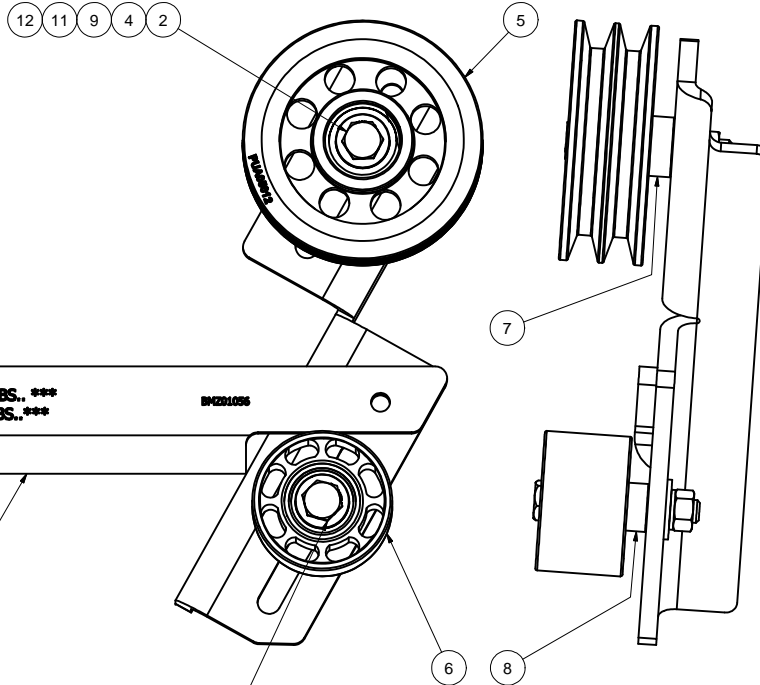
TITLE	KIT, FOUND'N, HDX, 4xFC, '12		
SIZE	C	DWG NO	KFT00001
SCALE	1:4	SHEET	1 OF 1
REV	1	OF	1

1	REVIS	REVISED P/N# KTT00002.	4/16/2015	JRR
0	RELEASED TO PRODUCTION.		10/24/2012	JRR
REV/ECN:	DESCRIPTION:	DATE:	BY:	
THIS DRAWING CONTAINS PROPRIETARY CONFIDENTIAL INFORMATION OWNED BY TRANSARCTIC CANADA INC. THE DOCUMENT AND THE INFORMATION IN IT ARE NOT TO BE USED, DISCLOSED OR REPRODUCED WITHOUT EXPRESS WRITTEN PERMISSION OF THE COMPANY.				
UNSPECIFIED TOLERANCES: (ALT. DIM.)				
ONE DECIMAL PLACE (.X)	.50	(.020)		
TWO DECIMAL PLACE (.XX)	.25	(.010)		
THREE DECIMAL PLACE (.XXX)	.10	(.005)		
FRACTIONAL +/- 1/32"	ANGULAR +/- .50°	THIRD ANGLE PROJECTION		

NOTES:
 1) USE SERVICABLE THREADLOCKER ON ALL FASTENERS TO ENGINE COMPONENTS AND TORQUE **ALL** BOLTS TO S.A.E. SPECIFICATIONS.
 2) SEE "TRANSARCTIC A/C COMPRESSOR MOUNT INSTALLATION DISCLAIMER".

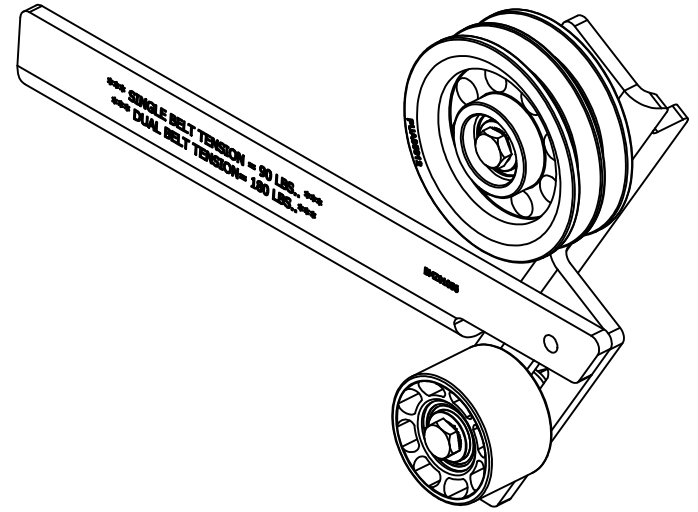


x2 3 10



1

12 11 9 4 2



ISOMETRIC VIEW

NOTES:

- 1) USE SERVICABLE THREADLOCKER ON ALL FASTENERS TO ENGINE COMPONENTS AND TORQUE **ALL** BOLTS TO S.A.E. SPECIFICATIONS.
- 2) SEE "TRANSARCTIC A/C COMPRESSOR MOUNT INSTALLATION DISCLAIMER".

ITEM	QTY	U/M	PART NUMBER	DESCRIPTION
12	2	EACH	WLA12000	WASHER, LOCK, 12mm, 8.8, PLT
11	2	EACH	WFS07000	WASHER, FLAT, 7/16", 8, USS, PLT
10	2	EACH	WFN06000	WASHER, FLAT, 3/8", 2, PLT
9	2	EACH	SLV17012	SLEEVE, PULLEY, 16.9o x 22.23 mm x12.19l
8	1	EACH	SCD25412	SPACER, COL, DRL,25.4mm x 25.4o x 12.3i
7	1	EACH	SCD21912	SPACER, COL, DRL,21.9mm x 31.8o x12.3i
6	1	EACH	PUL80074	PULLEY, IDLER, BACKSIDE, P8, 74D, 46.27W
5	1	EACH	PUA05012	PULLEY, ASSY, IDLER, B/BX gr, 5" STL, PLT
4	2	EACH	NTA12000	NUT, HEX, 12 x 1.75, 8.8, PLT
3	2	EACH	BTQ06125	BOLT, HEX, 3/8-16UNC, 1.25", 8. PLT
2	2	EACH	BTC12080	BOLT, HEX, 12 x 1.75 x 80mm, 10.9, PLT
1	1	EACH	BMZ01056	BKT, FRT, WELDMT, ANGLE, TH, HDX, '12

BILL OF MATERIALS

DRAWN	jrodriguez	10/17/2012
CHECKED	Val Jakowlew	10/4/2012
REV	ECN:	DESCRIPTION:
1		REVISED P/N# BMZ01056
0		RELEASED TO PRODUCTION
		DATE:
		BY:
		MFG
		APPROVED

TRANSARCTIC INC.

TITLE
KIT, TENSIONER BRACKET, ASS'Y, TH, HDX, '12

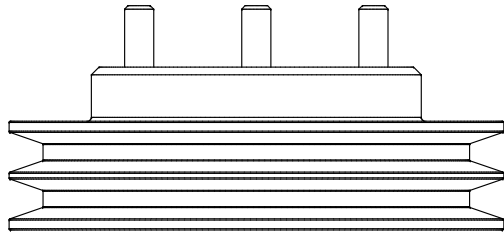
SIZE
C

DWG NO
KTT00002

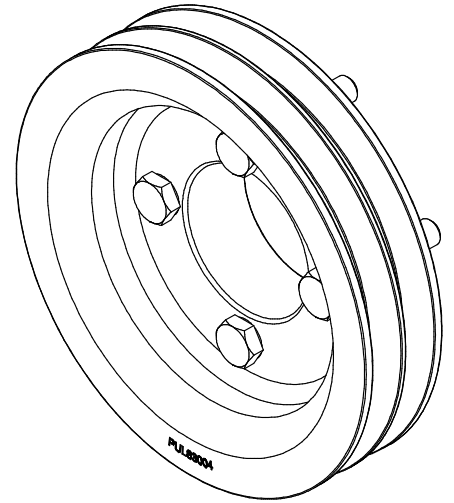
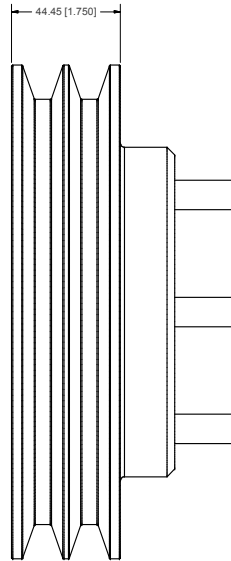
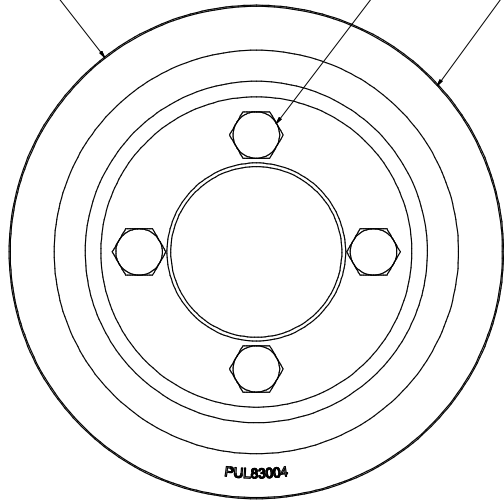
REV
1

1		REVISED P/N# BMZ01056	4/16/2015	JRR
0		RELEASED TO PRODUCTION	10/24/2012	JRR
REV	ECN:	DESCRIPTION:	DATE:	BY:
THIS DRAWING CONTAINS PROPRIETARY CONFIDENTIAL INFORMATION OWNED BY TRANSARCTIC CANADA INC. THE DOCUMENT AND THE INFORMATION IN IT ARE NOT TO BE USED, DISCLOSED OR REPRODUCED WITHOUT EXPRESS WRITTEN PERMISSION OF THE COMPANY.				
UNSPECIFIED TOLERANCES: (ALT. DIM.)				
ONE DECIMAL PLACE (X)	.50	(.020)		
TWO DECIMAL PLACE (XX)	.25	(.010)		
THREE DECIMAL PLACE (XXX)	.10	(.005)		
FRACTIONAL +/- .032"	ANGULAR +/- .50°			
		THIRD ANGLE PROJECTION		

DRAWING UNIT OF MEASURE:	MM (INCH)	SCALE	1:2	SHEET	1	OF	1
--------------------------	-----------	-------	-----	-------	---	----	---



Ø201.93 [7.950]



ISOMETRIC VIEW

NOTES:

- 1) USE SERVICABLE THREADLOCKER ON ALL FASTENERS TO ENGINE COMPONENTS AND TORQUE **ALL** BOLTS TO S.A.E. SPECIFICATIONS.
- 2) SEE "TRANSARGTIC A/C COMPRESSOR MOUNT INSTALLATION DISCLAIMER".
- 3) WEIGHT: 15.74 LB

ITEM	QTY	U/M	PART NUMBER	DESCRIPTION
2	1	EACH	PUL83004	PULLEY, CRANK, ISC, 8.3L, 2B/X, 8", '08
1	4	EACH	8TC12060	BOLT, HEX, 12 x 1.75 x 60mm, 10.9, PLT

BILL OF MATERIALS

DRAWN	jrodriguez	11/2/2012
CHECKED	Val Jakowlew	11/2/2012
APPROVED	Ron Ingram	11/2/2012
DATE	Dale Mason	11/2/2012

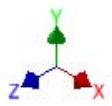
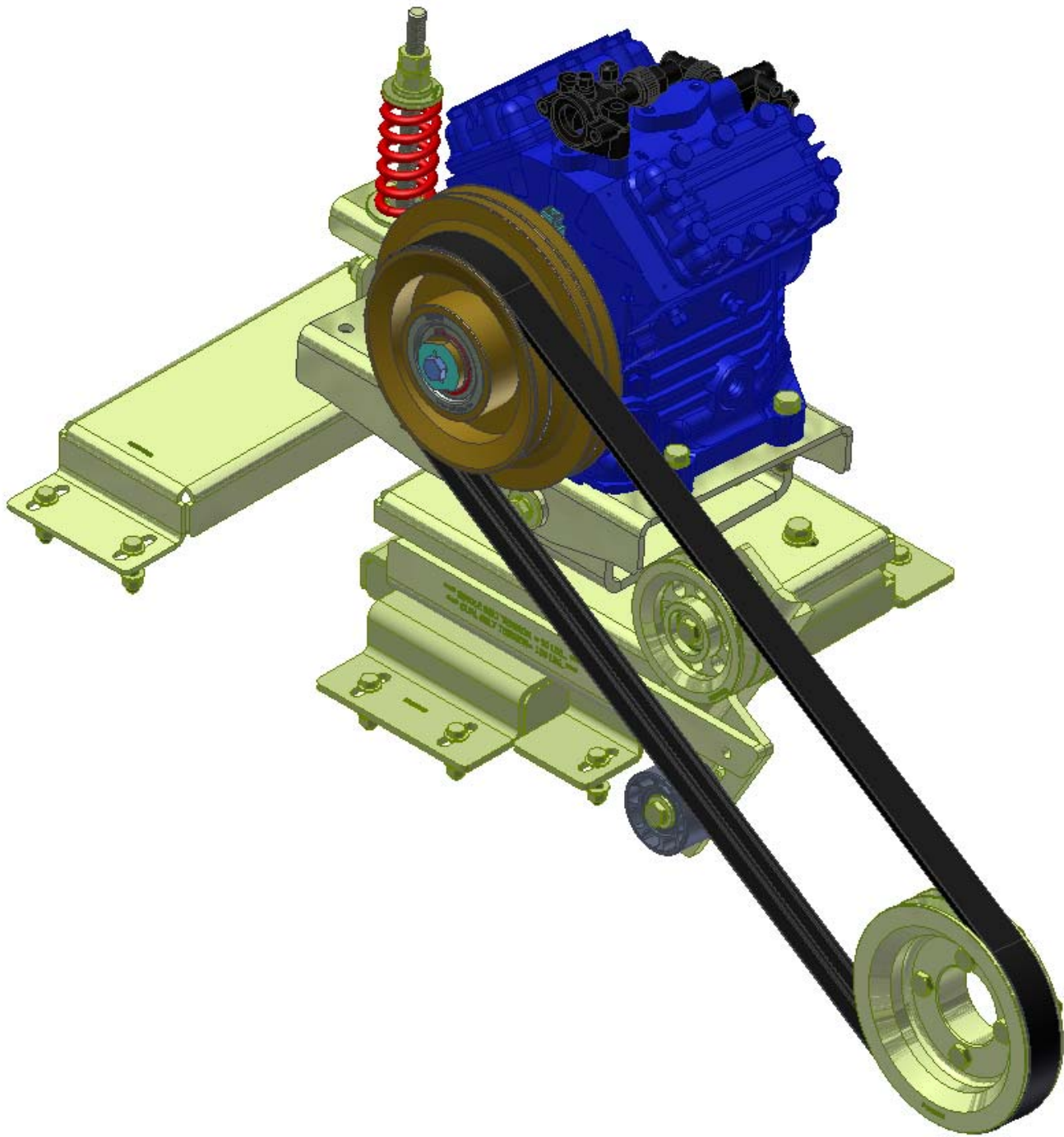
TRANSARGTIC INC.

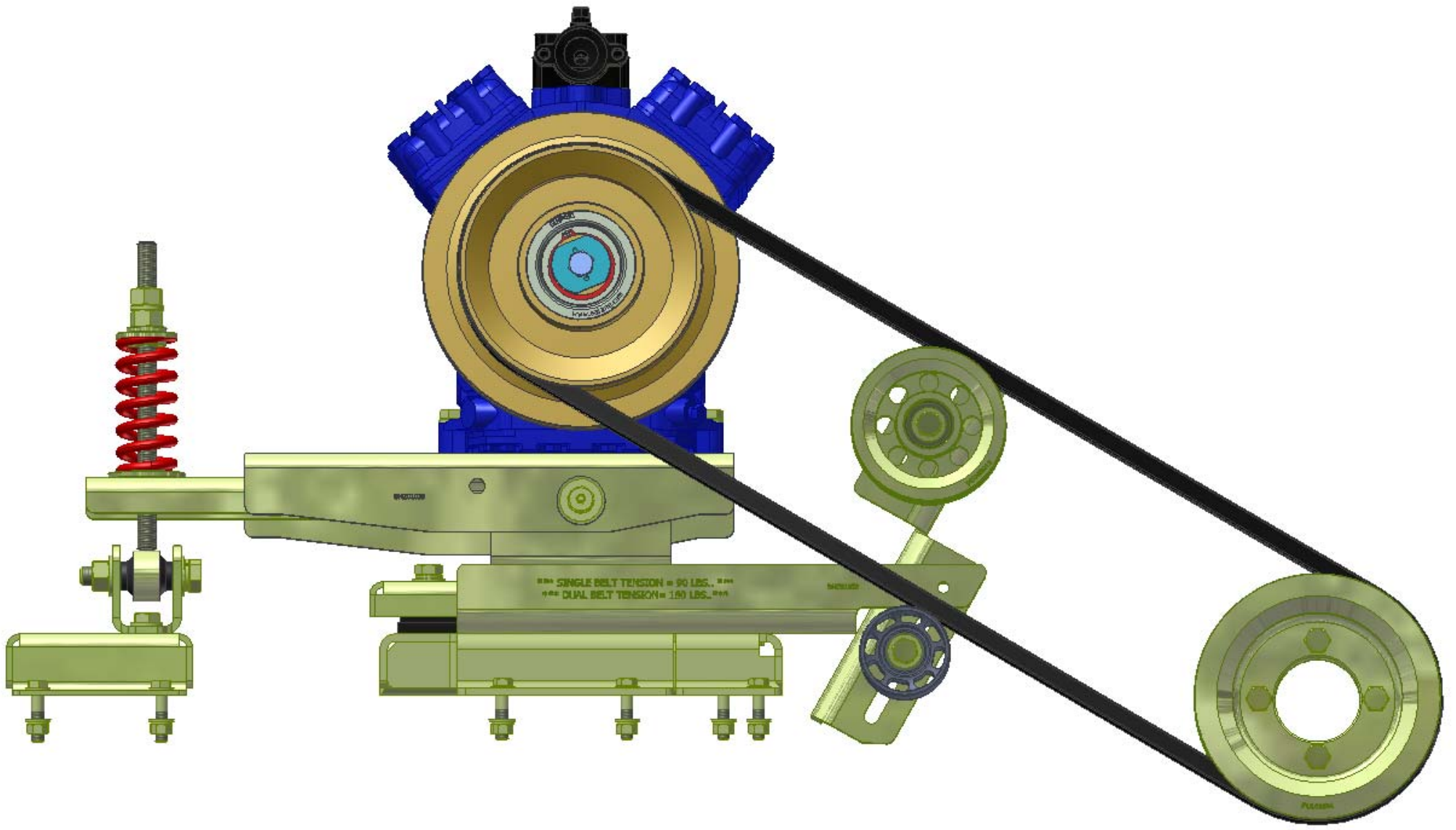
KIT, PULLEY, ISC, 2A/2B, HDX, '12

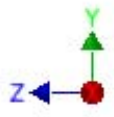
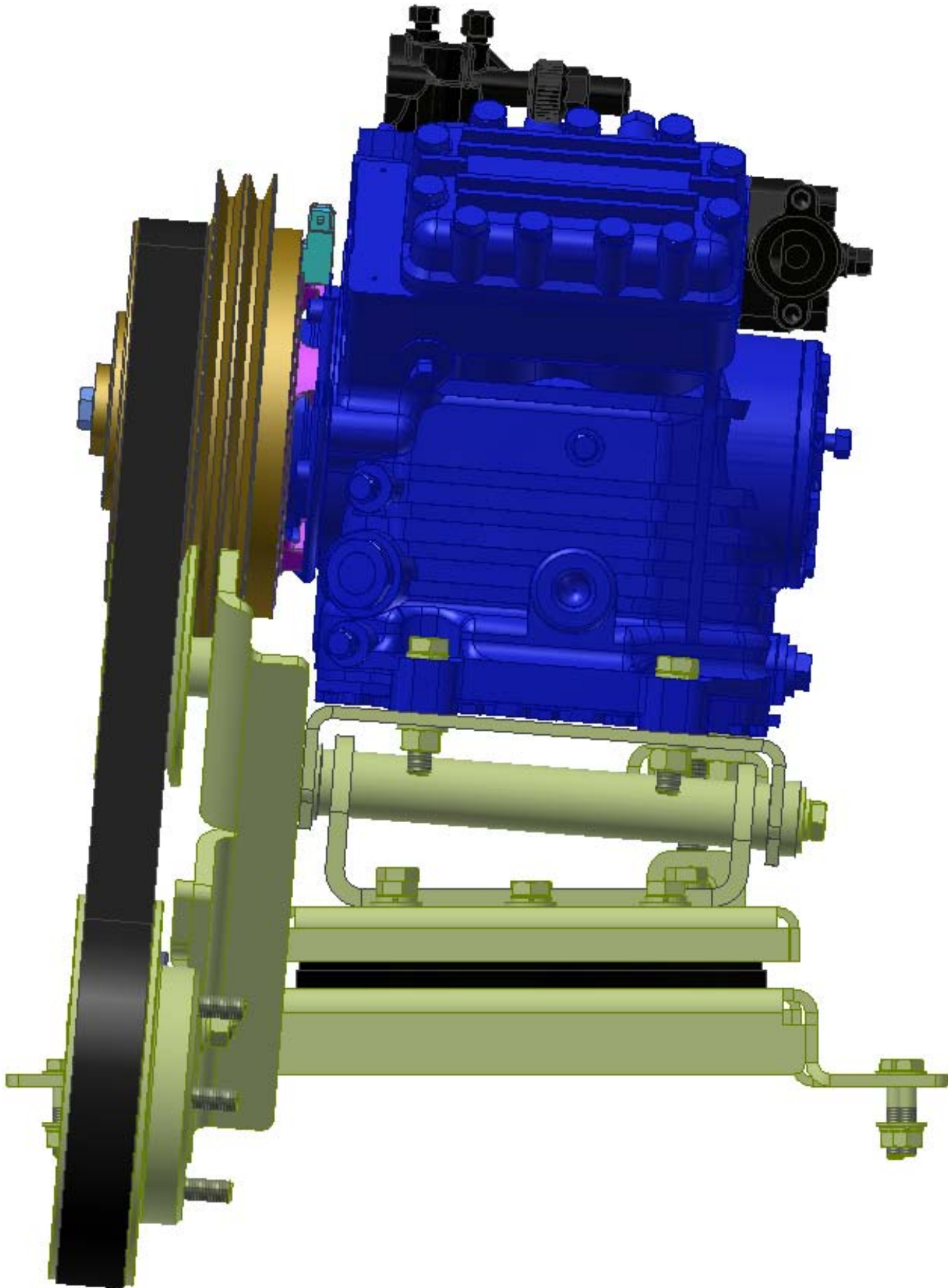
RELEASED TO PRODUCTION	11/02/2012	DRK
DESCRIPTION:	DATE:	BY:
THIS DRAWING CONTAINS PROPRIETARY CONFIDENTIAL INFORMATION OWNED BY TRANSARGTIC CANADA INC. THE DOCUMENT AND THE INFORMATION IN IT ARE NOT TO BE USED, DISCLOSED OR REPRODUCED WITHOUT EXPRESS WRITTEN PERMISSION OF THE COMPANY.		
UNSPECIFIED TOLERANCES:	(ALL DIM)	GROUP
ONE DECIMAL PLACE (10)	AS SHOWN	
TWO DECIMAL PLACE (20)	AS SHOWN	
FRACTIONAL (1/32)	AS SHOWN	

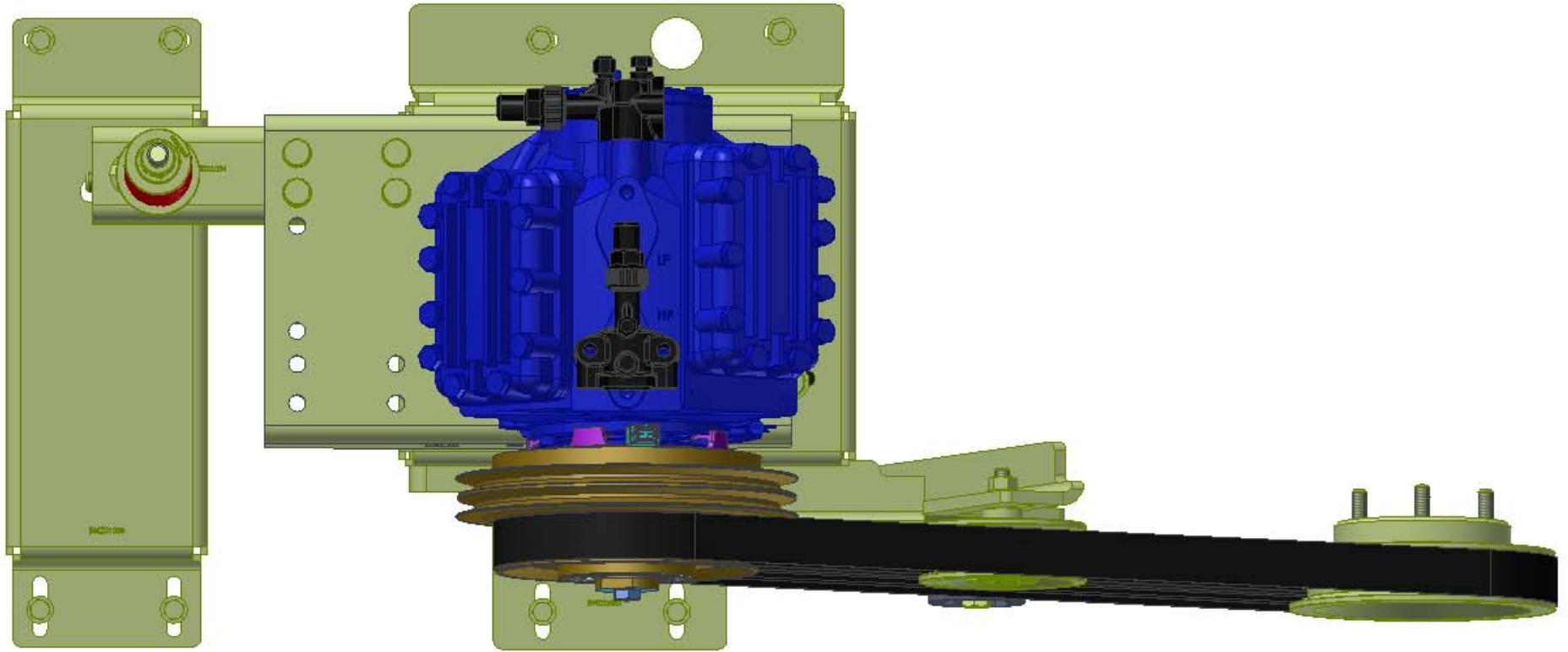


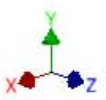
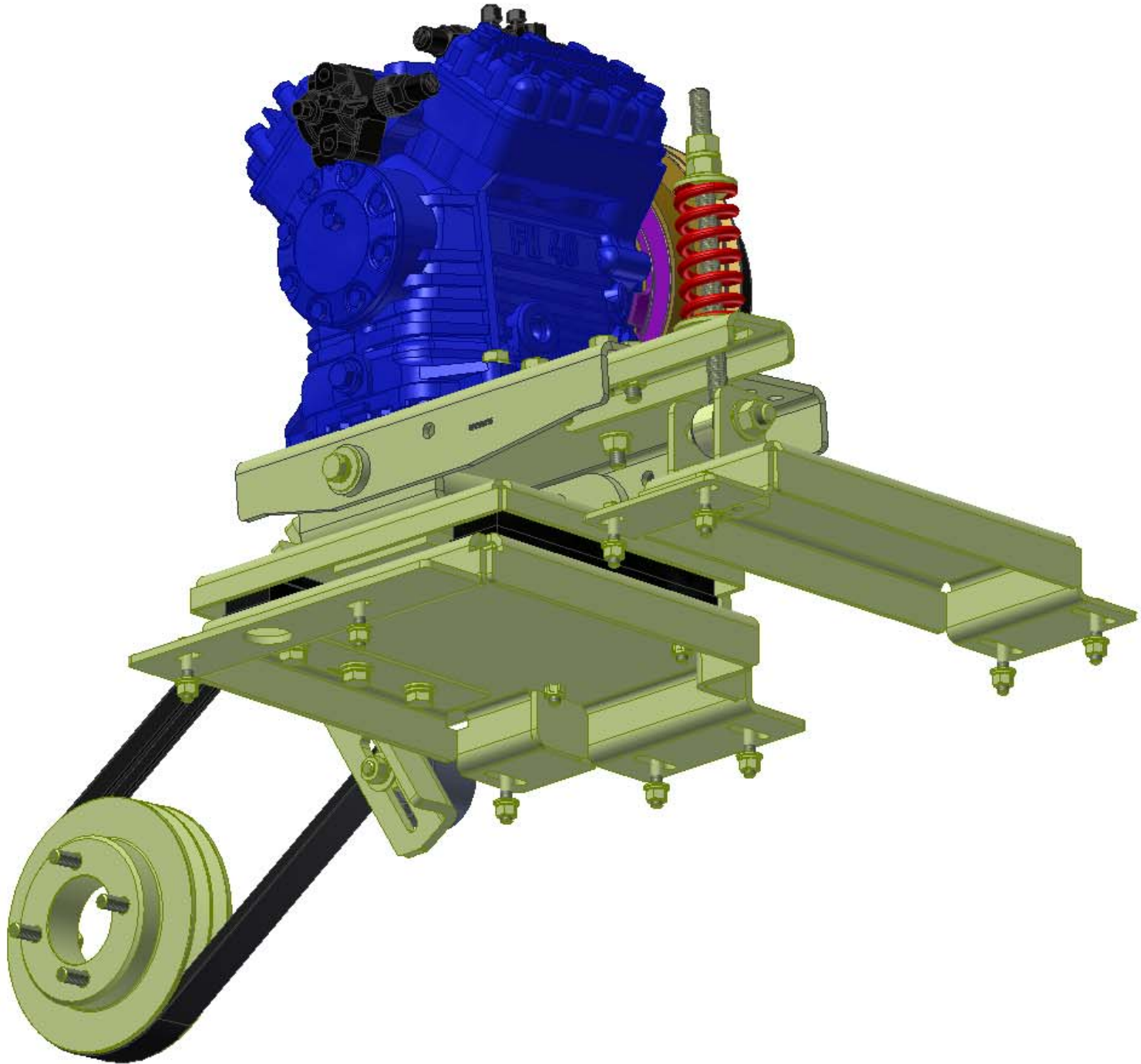
DRAWING UNIT OF MEASURE	MM (INCH)	SCALE	1:1	DWG NO	KPC83004	REV	0
-------------------------	-----------	-------	-----	--------	----------	-----	---











TransArctic A/C Compressor Mount Installation Disclaimer

All compressor mounts should be installed by qualified and trained personnel using proper tools and equipment in safe working conditions following industry standard guidelines for motor vehicle service and repair.

The installer of any compressor mount purchased from TransArctic must undertake all responsibility of issues arising from that compressor bracket being installed on any vehicle. As well as insure that a **proper and sufficient ground** is established between the compressors' clutches and the vehicle's engine. Mount functionality, operation and durability can all be compromised by an incompetent installation.

Due to the many different situations, parameters and application criteria, which are beyond the compressor mount manufacturer's control, TransArctic does not warrant design, durability, or operational functionality of any compressor mount improperly installed by another party.

With no implied guarantees it is the mount installer's strict responsibility to determine safety and functionality, of the compressor mount, at the time of installation.

Please contact TransArctic with any issue arising from installation so we may better improve the product. If you have any reservations about the compressor mount integrity contact TransArctic immediately at 1-877-COLD-AIR.

Mark OEM tensioner location

Install Kit

Check for Interferences

Check to ensure that the proper OEM tensioner orientation is maintained

Run engine with A/C system engaged for at least 10 minutes to run in belt

Check OEM tensioner orientation and adjust as required

Responsabilidad limitada de TransArctic en la instalación del soporte del compresor

Todos los soportes de los compresores deben ser instalados por personas calificadas y entrenadas, usando para ello los equipos y herramientas necesarios para esta labor en buenas condiciones y según las normas y guías para el servicio y/o reparación de motores de vehículos.

El instalador de los soportes comprados en TransArctic asume toda la responsabilidad de cualquier problema que surga en el soporte del compresor al vehículo; de igual manera es responsable que el cable a tierra sea conectado entre el embrague del compresor y el motor del vehículo.

Se advierte que el buen funcionamiento y la durabilidad del soporte pueden ser comprometidos por defectos en su instalación.

Debido a las diversas situaciones que se puedan presentar fuera del control del fabricante, TransArctic no garantiza el diseño, la durabilidad o el correcto funcionamiento de cualquier equipo inapropiadamente instalado por terceros.

Esta sobreentendido que el Instalador del montaje del compresor es estrictamente responsable de la seguridad y funcionamiento del equipo en el momento de la instalación.

Si tuviera algún problema o duda acerca de la instalación del soporte del compresor pongase en contacto inmediatamente con TransArctic al teléfono 1-877-COLD-AIR de modo que podamos mejorar nuestro producto.

Note la ubicación del medidor de tensión OEM

Instale el equipo

Controlar si hay interferencias.

Asegurese que el medidor de tensión mantenga la orientación justa.

Encienda el motor por lo menos 10 minutos con el sistema A/C enganchado para que la correa corra

Controle la orientación justa del medidor de tensión y ajuste a las condiciones requeridas del fabricante