

Bill of Materials Listing

TransArctic Canada Inc.

3/7/2007
Page 1 of 1

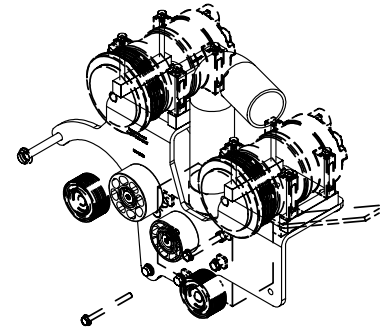
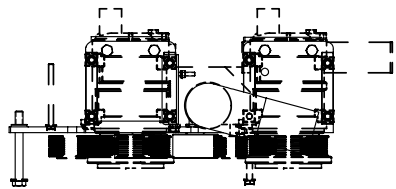
Product Number		Description	Bin	Date	Weight	Uof M	Yield
Line	Component Prod#	Description		Unit	Qty		
KMJ82690		Mt Kit, JD 8.1L CNG, TH ER, 2 TM-21,'07		1/25/2007	31.97		0
10	BEL82794	Belt, 8gr, 2794mm (110") (5081100)		each	1		
20	BMJ80001	Bkt, Main, Weldmt, JD 8.1 L, HDX ER, '07		each	1		
30	BMJ80002	Bkt, Brace, D/S, JD 8.1 L, HDX ER, '07		each	1		
40	BMJ80003	Bkt, Brace, P/S, JD 8.1 L, HDX ER, '07		each	1		
45	BMJ80004	Bkt, Hose, Clamp, JD 8.1 L, HDX ER, '07		each	1		
50	PUL80076	Pulley, Idler, Backside, P8, 76d (89062)		each	1		
60	PUL80089	Pulley, Idler, Backside,P8,86.4d (89106)		each	1		
70	HOR02501	Hose, Heater, 2.5" ID, 90 deg		each	1		
80	CLP20048	Clamp, "P" type, #48, 1/2"w, 3", PC		each	1		
90	KBJ82690	Bag Kit, Fasteners, KMJ82690		each	1		

Bill of Materials Listing

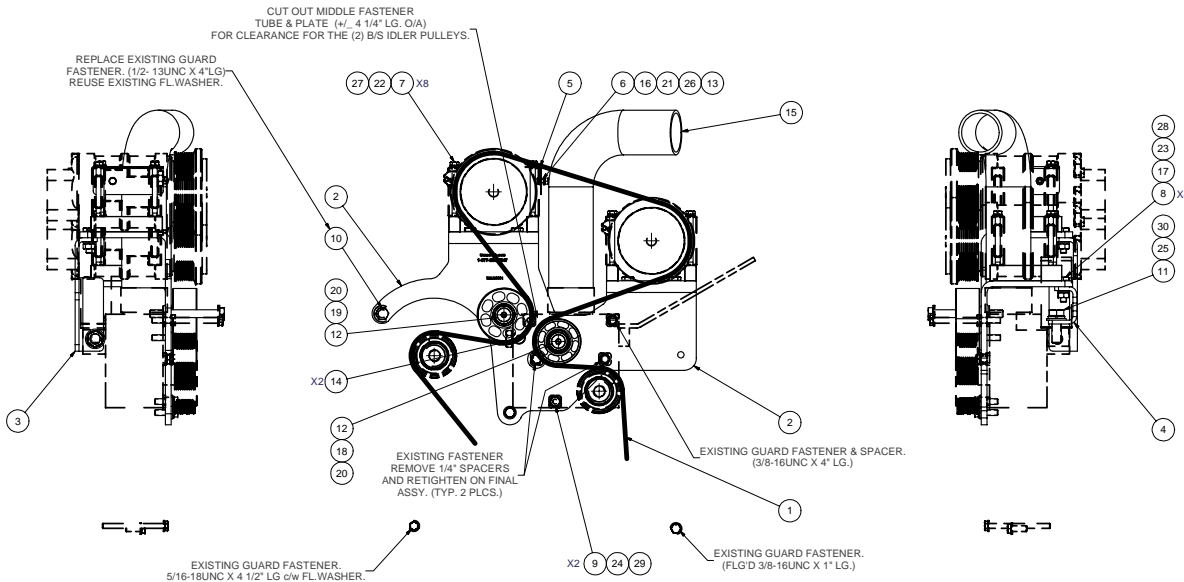
TransArctic Canada Inc.

3/7/2007
Page 1 of 1

Product Number		Description	Bin	Date	Weight	Uof M	Yield
Line	Component Prod#	Description		Unit	Qty		
KBJ82690		Bag Kit, Fasteners, KMJ82690		1/25/2007	2.10		0
10	BTC10035	Bolt, Hex, 10 x 1.5 x 35mm, 10.9, Plt		each	4		
20	BTC08100	Bolt, Hex, 8 x 1.25 x 100mm, 10.9, Plt		each	8		
25	BTC06030	Bolt, Hex, 6 x 1.0 x 30mm, 10.9, Plt		each	1		
30	BTQ10175	Bolt, Hex, 5/8-11unc, 1.75", 8, PLT		each	1		
35	BTQ08450	Bolt, Hex, 1/2-13unc, 4.5", 8, Plt		each	1		
40	BTQ06125	Bolt, Hex, 3/8-16unc, 1.25", 8, Plt		each	2		
50	BTS10001	Bolt, Shoulder, 10mm (89064)		each	2		
60	CSF06125	Capscrew, FH, 3/8-16 x 1.25", 9, Plt		each	2		
70	NTA10000	Nut, Hex, 10 x 1.5, 8.8, Plt		each	4		
75	NTA06000	Nut, Hex, 6 x 1.0, 8.8, Plt		each	1		
80	WDS17001	Washer, Dust Cover (89060)		each	2		
90	WFA10000	Washer, Flat, 10mm, 8.8, Plt		each	4		
100	WFA08000	Washer, Flat, 8mm, 8.8, Plt		each	8		
105	WFA06000	Washer, Flat, 6mm, 8.8, Plt		each	2		
110	WFQ10000	Washer, Flat, 5/8", 8, Plt		each	2		
120	WFN06000	Washer, Flat, 3/8", 2, Plt		each	2		
125	WLA06000	Washer, Lock, 6mm, 8.8, Plt		each	1		
130	WLQ10000	Washer, Lock, 5/8", 8, Plt		each	2		
140	WLP06000	Washer, Lock, 3/8", 5, Plt		each	2		
150	WLA10000	Washer, Lock, 10mm, 8.8, Plt		each	4		
160	WLA08000	Washer, Lock, 8mm, 8.8, Plt		each	8		



ISOMETRIC VIEW



- NOTES:**
- 1) USE SERVICABLE THREADLOCKER ON ALL FASTENERS TO ENGINE COMPONENTS AND TORQUE **ALL** BOLTS TO S.A.E. SPECIFICATIONS.
 - 2) SEE "TRANSARCTIC A/C COMPRESSOR MOUNT INSTALLATION DISCLAIMER".

ITEM	QTY	UM	PART NUMBER	DESCRIPTION
30	2	EACH	WLG10000	WASHER, LOCK, 5/8", 5, PLT
29	2	EACH	WLP06000	WASHER, LOCK, 3/8", 5, PLT
28	4	EACH	WLA10000	WASHER, LOCK, 10mm, 8.8, PLT
27	8	EACH	WLA08000	WASHER, LOCK, 8mm, 8.8, PLT
26	1	EACH	WLA06000	WASHER, LOCK, 6mm, 8.8, PLT
25	2	EACH	WFG10000	WASHER, FLAT, 5/8", 8, PLT
24	2	EACH	WFN06000	WASHER, FLAT, 3/8", 2, PLT
23	4	EACH	WFA10000	WASHER, FLAT, 10mm, 8.8, PLT
22	8	EACH	WFA08000	WASHER, FLAT, 8mm, 8.8, PLT
21	2	EACH	WFA06000	WASHER, FLAT, 6mm, 8.8, PLT
20	2	EACH	WDS17001	WASHER, DUST COVER (PUL80076)
19	1	EACH	PUL80089	PULLEY, IDLER, BACKSIDE, P8, 86-4D, 39W
18	1	EACH	PUL80076	PULLEY, IDLER, BACKSIDE, P8, 76D, 39W
17	4	EACH	NTA10000	NUT, HEX, 10 x 1.5, 8.8, PLT
16	1	EACH	NTA06000	NUT, HEX, 6 x 1, 8.8, PLT
15	1	EACH	HOR02501	HOSE, HEATER, 2.5" ID, C/W SPRING, 90 DEG
14	2	EACH	CSF06125	CAPSCREW, FH, 3/8-16 x 1.25", 9, PLT
13	1	EACH	CLP20048	CLAMP, "P" TYPE #48, 1/2"W, 3" PC
12	2	EACH	BTS10001	BOLT, SHOULDER, 10mm (IDLER PULLEY)
11	1	EACH	BTQ10175	BOLT, HEX, 5/8-11UNC x 1.75, 8, PLT
10	1	EACH	BTQ08450	BOLT, HEX, 1/2-13UNC x 4.50, 8, PLT
9	2	EACH	BTQ06125	BOLT, HEX, 3/8-16UNC x 1.25, 8, PLT
8	4	EACH	BTC10035	BOLT, HEX, 10 x 1.5 x 35mm, 10.9, PLT
7	8	EACH	BTC08100	BOLT, HEX, 8 x 1.25 x 100mm, 10.9, PLT
6	1	EACH	BTC06030	BOLT, HEX, 6 x 1.0 x 30mm, 10.9, PLT
5	1	EACH	BMJ80004	BKT, HOSE, CLAMP, JD, 8.1L, HDX ER, '07
4	1	EACH	BMJ80003	BKT, BRACE, P/S, JD, 8.1L, HDX ER, '07
3	1	EACH	BMJ80002	BKT, BRACE, D/S, JD, 8.1L, HDX ER, '07
2	1	EACH	BMJ80001	BKT, MAIN, WELDMNT, JD, 8.1L, HDX ER, '07
1	1	EACH	BEL82794	BELT, 8gr, 2794mm (110") (S081100)

TRANSARCTIC INC.

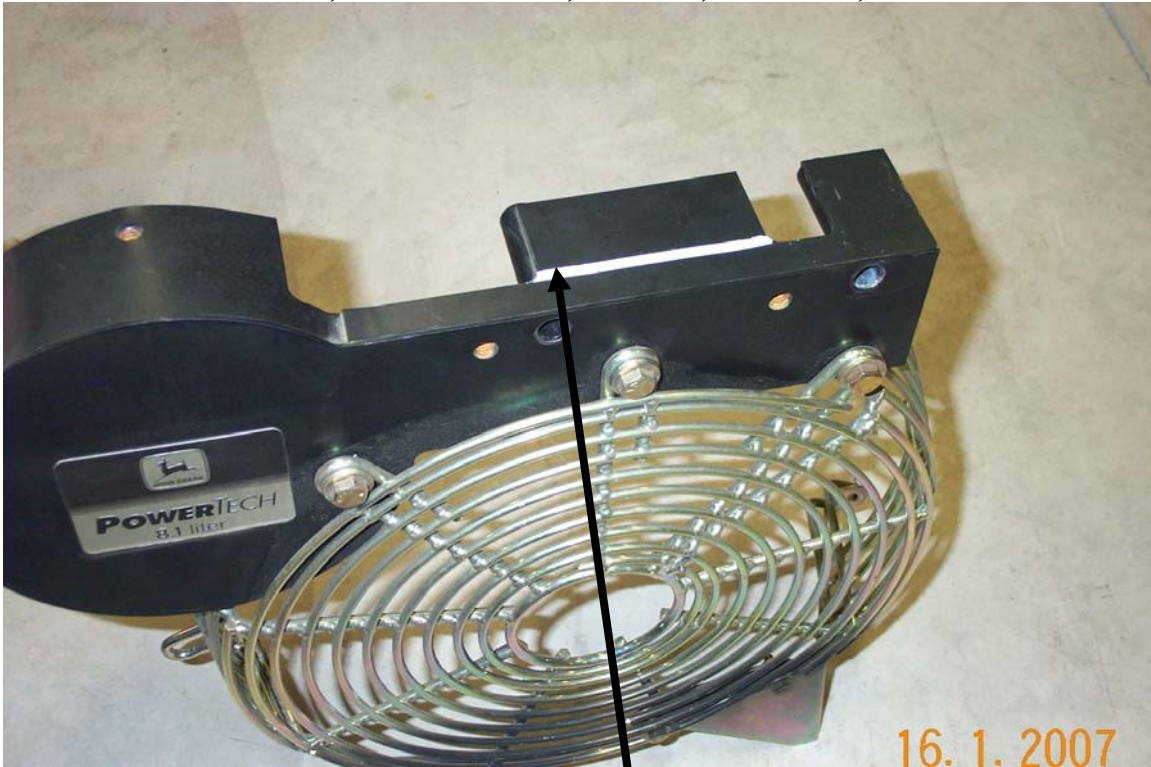
UNSPECIFIED TOLERANCES:	ALL DIMS	FRONT	DATE: 1/29/2007	BY: James Stewart	1/29/2007	TITLE
ONE DECIMAL PLACE (X1)	30	FRONT	DATE: 1/29/2007	BY: James Stewart	1/29/2007	TITLE
TWO DECIMAL PLACE (X2)	20	FRONT	DATE: 1/29/2007	BY: James Stewart	1/29/2007	TITLE
THREE DECIMAL PLACE (X3)	20	FRONT	DATE: 1/29/2007	BY: James Stewart	1/29/2007	TITLE
FRACTIONAL (1/16")	20	FRONT	DATE: 1/29/2007	BY: James Stewart	1/29/2007	TITLE
ANGULAR	1/2	FRONT	DATE: 1/29/2007	BY: James Stewart	1/29/2007	TITLE
THIRD ANGLE PROJECTION			DATE: 1/29/2007	BY: James Stewart	1/29/2007	TITLE
DRAWING UNIT OF MEASURE:	MM (INCH)		DATE: 1/29/2007	BY: James Stewart	1/29/2007	TITLE
SCALE:	1:4		DATE: 1/29/2007	BY: James Stewart	1/29/2007	TITLE

MT KIT, JD 8.1L, TH ER, 2 TM-21, P8, '07

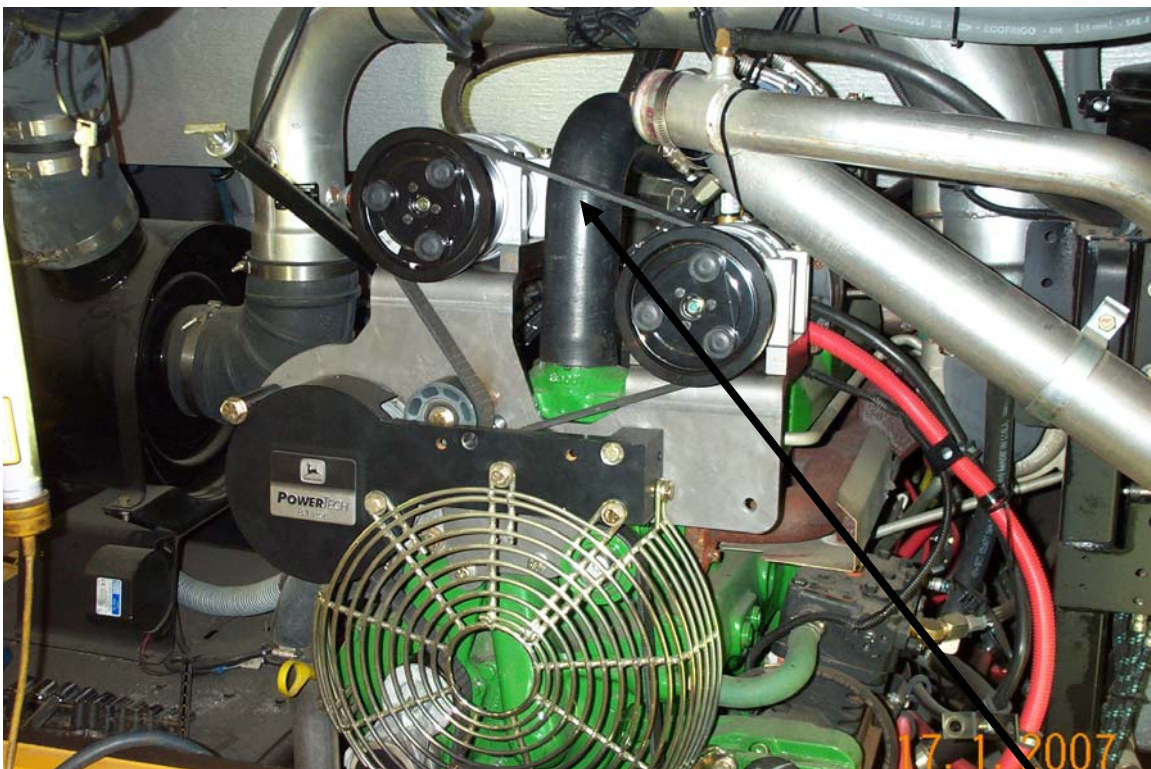
SIZE D DWG NO KMJ82690 REV 0

SHEET 1 OF 1

KMJ82690 - Mt Kit, JD 8.1L CNG, TH ER, 2 TM-21,'07



Cut Belt Guard along white line, grind and paint.



Ensure that Rad Hose is clamped, to the rear, away from belt path. See drawing.

TransArctic A/C Compressor Mount Installation Disclaimer

All compressor mounts should be installed by qualified and trained personnel using proper tools and equipment in safe working conditions following industry standard guidelines for motor vehicle service and repair.

The installer of any compressor mount purchased from TransArctic must undertake all responsibility of issues arising from that compressor bracket being installed on any vehicle. As well as insure that a **proper and sufficient ground** is established between the compressors' clutches and the vehicle's engine. Mount functionality, operation and durability can all be compromised by an incompetent installation.

Due to the many different situations, parameters and application criteria, which are beyond the compressor mount manufacturer's control, TransArctic does not warrant design, durability, or operational functionality of any compressor mount improperly installed by another party.

With no implied guarantees it is the mount installer's strict responsibility to determine safety and functionality, of the compressor mount, at the time of installation.

Please contact TransArctic with any issue arising from installation so we may better improve the product. If you have any reservations about the compressor mount integrity contact TransArctic immediately at 1-877-COLD-AIR.