

Bill of Materials Listing

TransArctic Canada Inc.

12/18/2008

Page 1 of 1

Product Number		Description	Bin	Date	Weight	Uof M	Yield
Line	Component Prod#	Description		Unit	Qty		
KMM62502		Mt kit, 6.4L MBE926, TH C2, BITZER, '07		1/4/2007	48.28		0
10	BEL82083	Belt, 8gr, 2083mm (82") (5080820)		each	1		
20	BEL21067	Belt, B gr, 1067mm (42") (BX39) MATCHED		each	2		
30	BMC60030	Bkt, Comp, Main, Weldmt, C2, F400, '07		each	1		
40	BMM60034	Bkt, Alt, Main, Weldmt, C2, MBE926, '07		each	1		
55	BMM62620	Bkt, Support, RAD, F400, TH MBE926, BLK		each	1		
60	PUA62501	Pulley, Assy,Idler,P8/2B gr,5.4/4.3",STL		each	1		
70	PUL80076	Pulley, Idler, Backside, P8, 76d (89062)		each	1		
80	SCD95010	Spacer, Col, Drl, 95mm x 19.05o x 10.32i		each	1		
90	SCD09510	Spacer, Col, Drl, 9.53mm x 25.4o x10.32i		each	2		
100	WFS12001	Washer, Flat, Step, 12mm, 69.85, Plt		each	1		
110	KBM62502	Bag Kit, Fasteners, KMM62502		each	1		

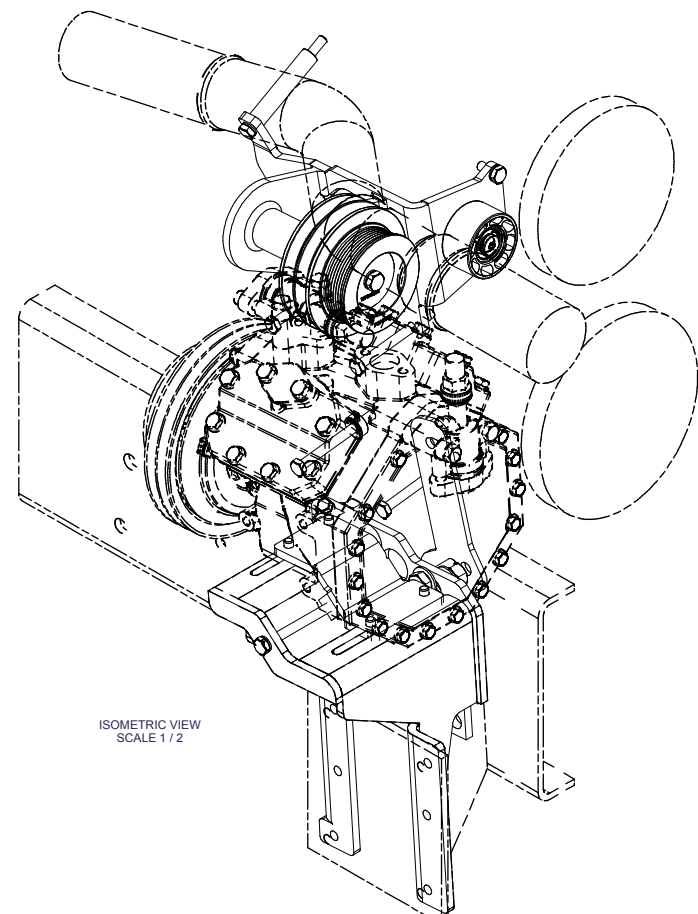
Belt length is 97" (5080970) with OEM dash air.

Bill of Materials Listing

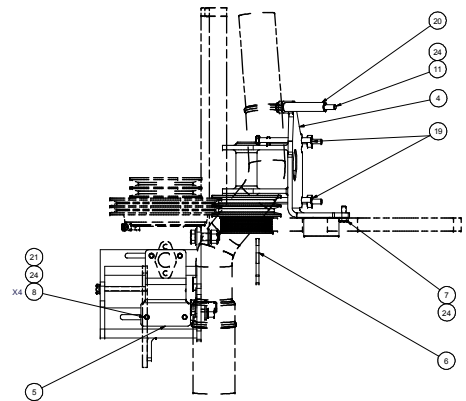
TransArctic Canada Inc.

2/17/2009
Page 1 of 1

Product Number	Description	Date	Weight	Uof M	Yield
Line Component Prod#	Description	Bin Unit	Qty		
KBM62502	Bag Kit, Fasteners, KMM62502	1/4/2007	2.45		0
5 BTC12030	Bolt, Hex, 12 x 1.75 x 30mm, 10.9, Plt	each	1		
10 BTC10130	Bolt, Hex, 10 x 1.5 x 130mm, 10.9, Plt	each	1		
20 BTC10110	Bolt, Hex, 10 x 1.5 x 110mm, 10.9, Plt	each	4		
30 BTC10100	Bolt, Hex, 10 x 1.5 x 100mm, 10.9, Plt	each	1		
40 BTC10030	Bolt, Hex, 10 x 1.5 x 30mm, 10.9, Plt	each	4		
50 BTC10025	Bolt, Hex, 10 x 1.5 x 25mm, 10.9, Plt	each	2		
60 BTS10001	Bolt, Shoulder, 10mm (89064)	each	1		
70 BTQ10175	Bolt, Hex, 5/8-11unc, 1.75", 8. PLT	each	2		
75 BTQ10200	Bolt, Hex, 5/8-11unc, 2", 8. PLT	each	1		
80 NTL10000	Nut, Lock, Hex, 5/8-11unc, 9, Plt	each	3		
90 WFA10000	Washer, Flat, 10mm, 8.8, Plt	each	4		
100 WFQ10000	Washer, Flat, 5/8", 8, Plt	each	6		
105 WLA12000	Washer, Lock, 12mm, 8.8, Plt	each	1		
110 WLA10000	Washer, Lock, 10mm, 8.8, Plt	each	8		



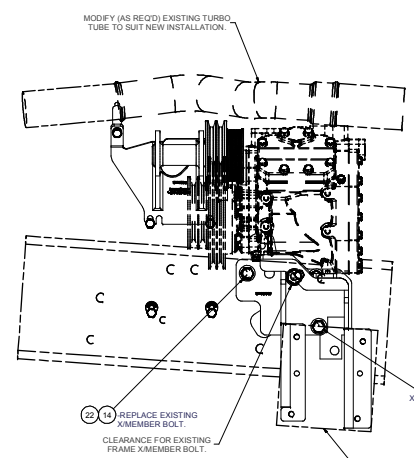
ISOMETRIC VIEW
SCALE 1/2



CAUTION:
DO NOT OVER TORQUE.
HAND TIGHTEN TO COMPRESS LOCKWASHER ONLY.
USE SERVICABLE THREADLOCKER.

NOTE:
CARRIER COMPRESSOR
PART#: 16-10140-00

NOTE:
FOR A CANADIAN STYLE BUS,
THE INSTALLER WILL NEED TO
ACQUIRE AND USE A ONE INCH
SHORTER IN LENGTH BELT IN
LIEU OF THE BELT SUPPLIED IN
THIS MOUNT KIT.

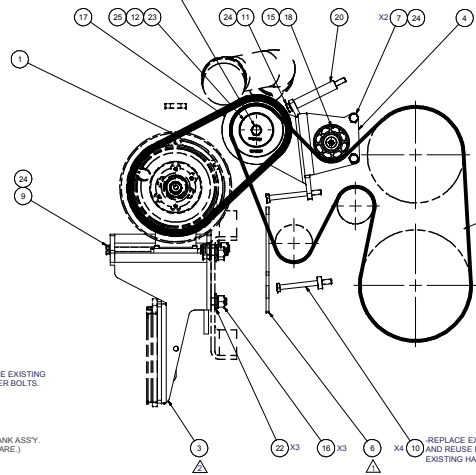


MODIFY (AS REQD) EXISTING TURBO
TUBE TO SUIT NEW INSTALLATION.

REPLACE EXISTING
X-MEMBER BOLT.
CLEARANCE FOR EXISTING
FRAME X-MEMBER BOLT.

REPLACE EXISTING
X-MEMBER BOLTS.

RE-INSTALL EXISTING AIR TANK ASSY.
(USE EXISTING HARDWARE.)



REPLACE EXISTING ALT BOLTS
AND REUSE REMAINDER OF
EXISTING HARDWARE.

NOTES:
1) USE SERVICABLE THREADLOCKER ON ALL FASTENERS TO ENGINE COMPONENTS AND
TORQUE ALL BOLTS TO S.A.E. SPECIFICATIONS.
2) SEE *TRANSARC TIC A/C COMPRESSOR MOUNT INSTALLATION DISCLAIMER*.

ITEM	QTY.	UM.	PART NUMBER	DESCRIPTION
25	1	EACH	WL12009	WASHER LOCK, 12mm, 8.8, PLT
24	8	EACH	WL10000	WASHER LOCK, 10mm, 8.8, PLT
23	1	EACH	WFS12001	WASHER FLAT, STEP, 12mm, 8.8, PLT
22	6	EACH	WFO20000	WASHER FLAT, 5/8", 8, PLT
21	4	EACH	WFA10000	WASHER FLAT, 10mm, 8.8, PLT
20	1	EACH	SCD95010	SPACER, COL, DRL, 95mm x 19.05a x 10.32
19	2	EACH	SCD95010	SPACER, COL, DRL, 95mm x 25.40 x 10.32
18	1	EACH	PUL80078	PULLEY, IDLER, BACKSIDE, P# 780, 38W
17	1	EACH	PUL62501	PULLEY ASSY, IDLER, P#28, STL, PLT
16	3	EACH	NTL10500	NOT. LOCK, HEX, 5/8-11UNC, 9, PLT
15	1	EACH	BTS10001	BOLT, SHOULDER, 10mm (IDLER PULLEY)
14	1	EACH	BTC10200	BOLT, HEX, 5/8-11UNC, 2", 8, PLT
13	2	EACH	BTC10175	BOLT, HEX, 5/8-11UNC, 1.75", 8, PLT
12	1	EACH	BTC10200	BOLT, HEX, 12 x 175 x 30mm, 10.9, PLT
11	1	EACH	BTC10130	BOLT, HEX, 10 x 1.5 x 130mm, 10.9, PLT
10	4	EACH	BTC10110	BOLT, HEX, 10 x 1.5 x 110mm, 10.9, PLT
9	1	EACH	BTC10100	BOLT, HEX, 10 x 1.5 x 100mm, 10.9, PLT
8	4	EACH	BTC10030	BOLT, HEX, 10 x 1.5 x 30mm, 10.9, PLT
7	2	EACH	BTC10025	BOLT, HEX, 10 x 1.5 x 25mm, 10.9, PLT
6	1	EACH	BMM60260	BKT, SUPPORT, ROD, TH, MBE926, BLK
5	1	EACH	BMM60040	BKT, MAIN, WELDMT, BITZER, C2, MBE926, 07
4	1	EACH	BMM60034	BKT, ALT, MAIN, WELDMT, C2, MBE926, 07
3	1	EACH	BMM60033	BKT, COMP, MAIN, WELDMT, C2, MBE926, 07
2	1	EACH	BEL82083	BELT, 8gr, 2083mm (82") (5080620)
1	2	EACH	BEL21087	BELT, 8 gr, 1067mm (42") (BX39) MATCHED

REV	CCN	DESCRIPTION	DATE	BY
4		GENERAL REVISION	2/22/2007	JP
3		NEW PARTS ADDED TO BOM	02/22/2007	JP
2		REVISED FOR PRODUCTION	02/22/2007	JP
1		REVISED FOR PRODUCTION	02/22/2007	JP

TRANSARC TIC INC.

Mt kit, 6.4L MBE926, TH C2, BITZER, 07

DWG NO: KMM62502

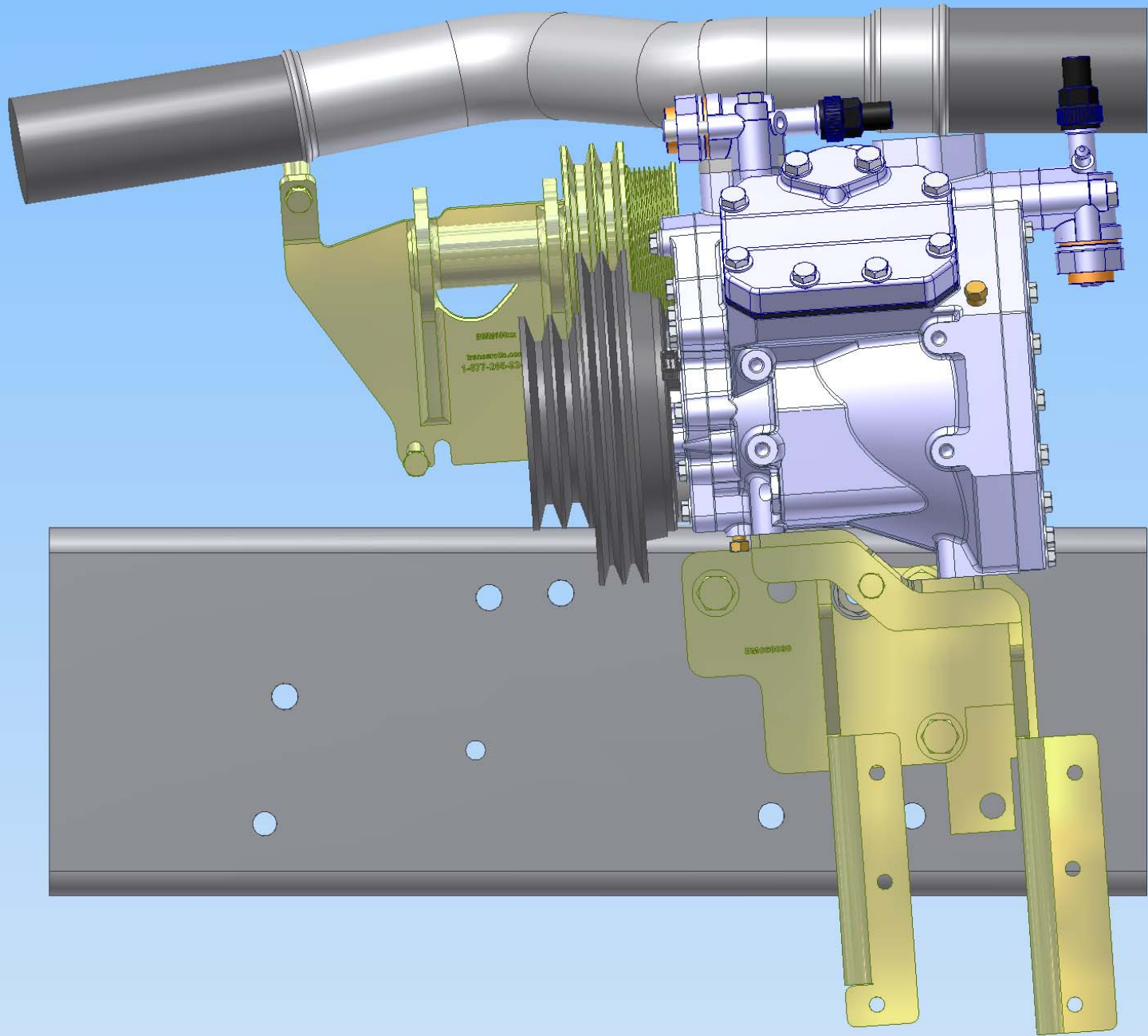
DATE: 2/22/2007

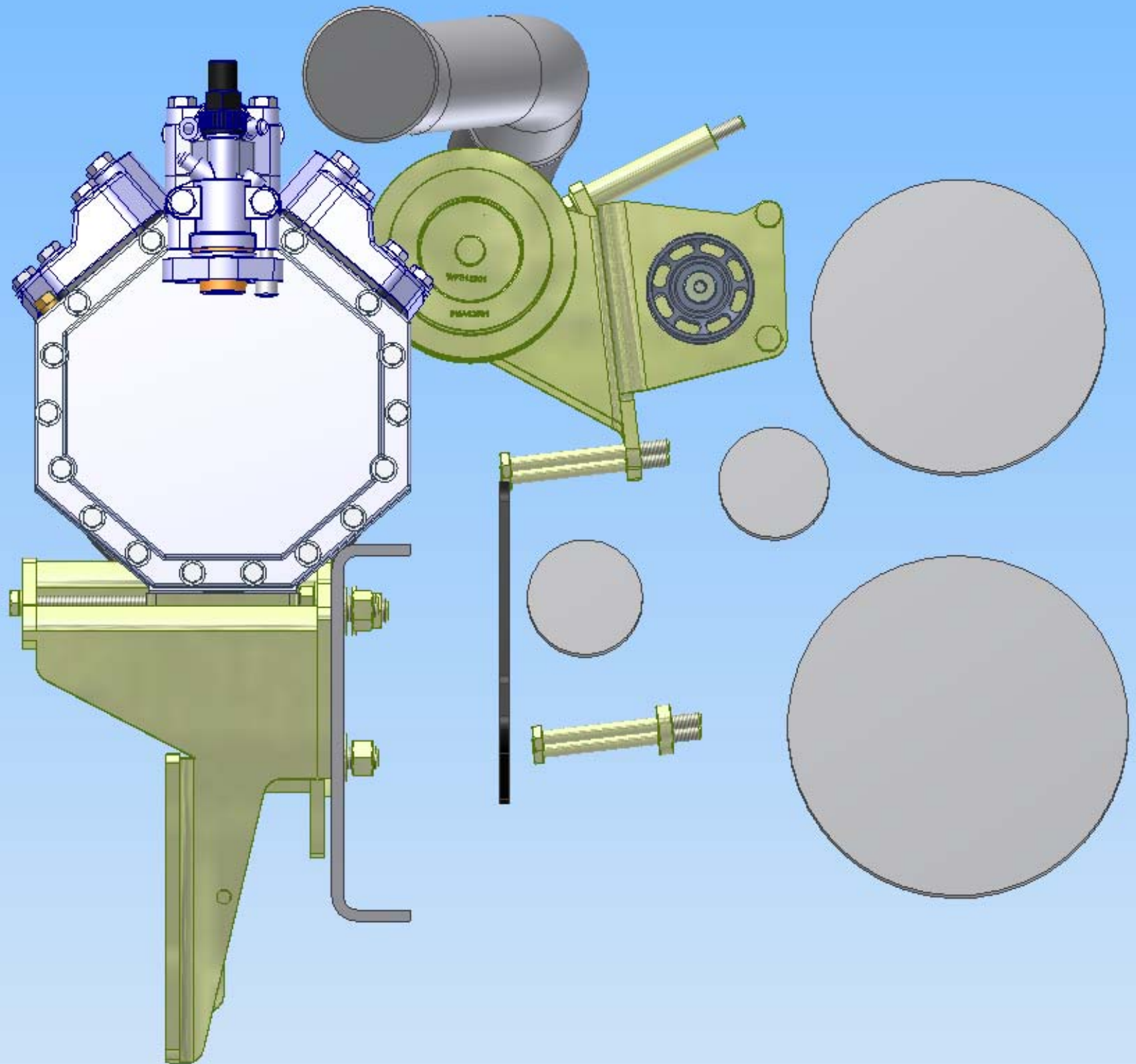
SCALE: 1:1

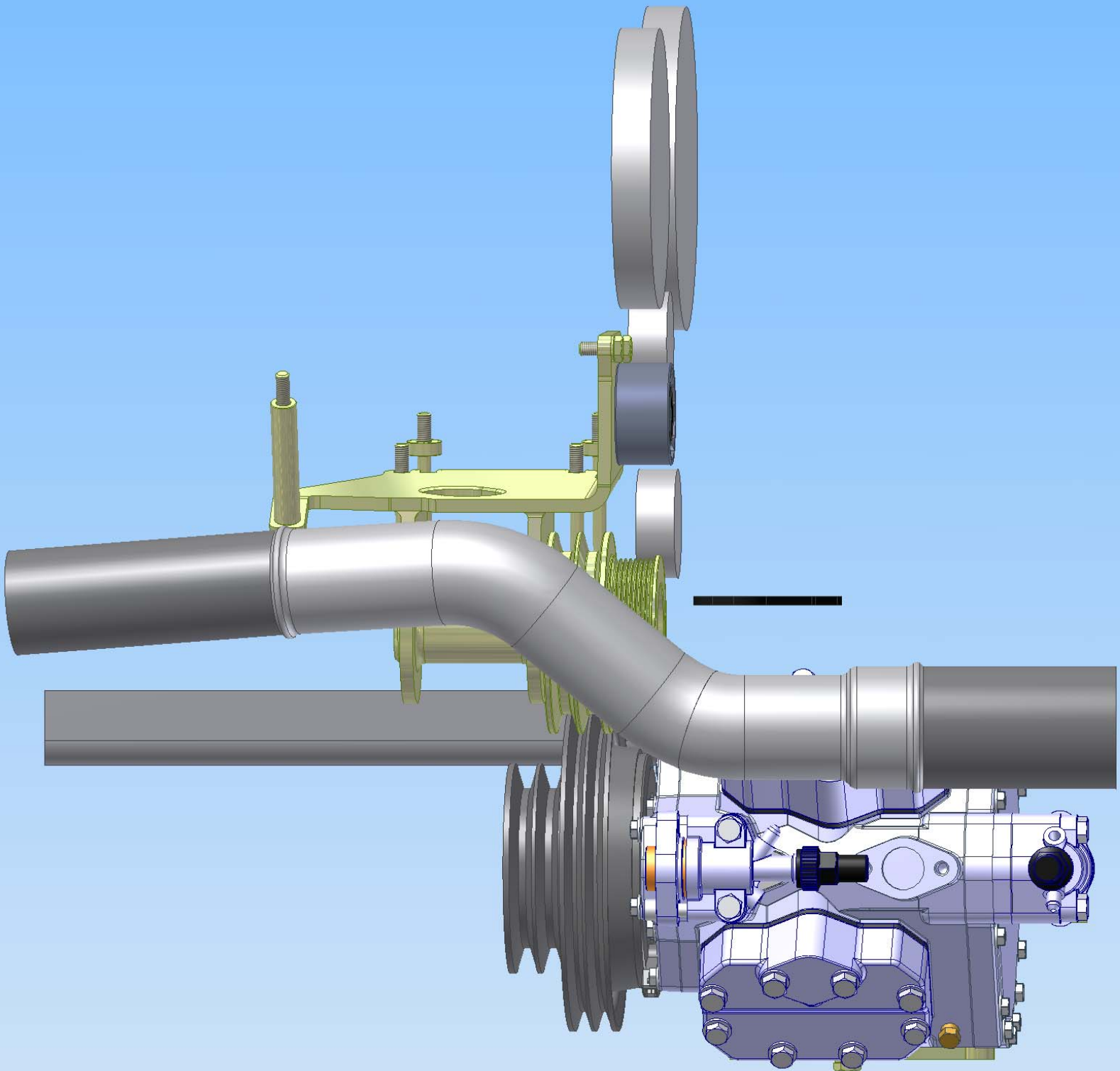
SHEET 1 OF 1

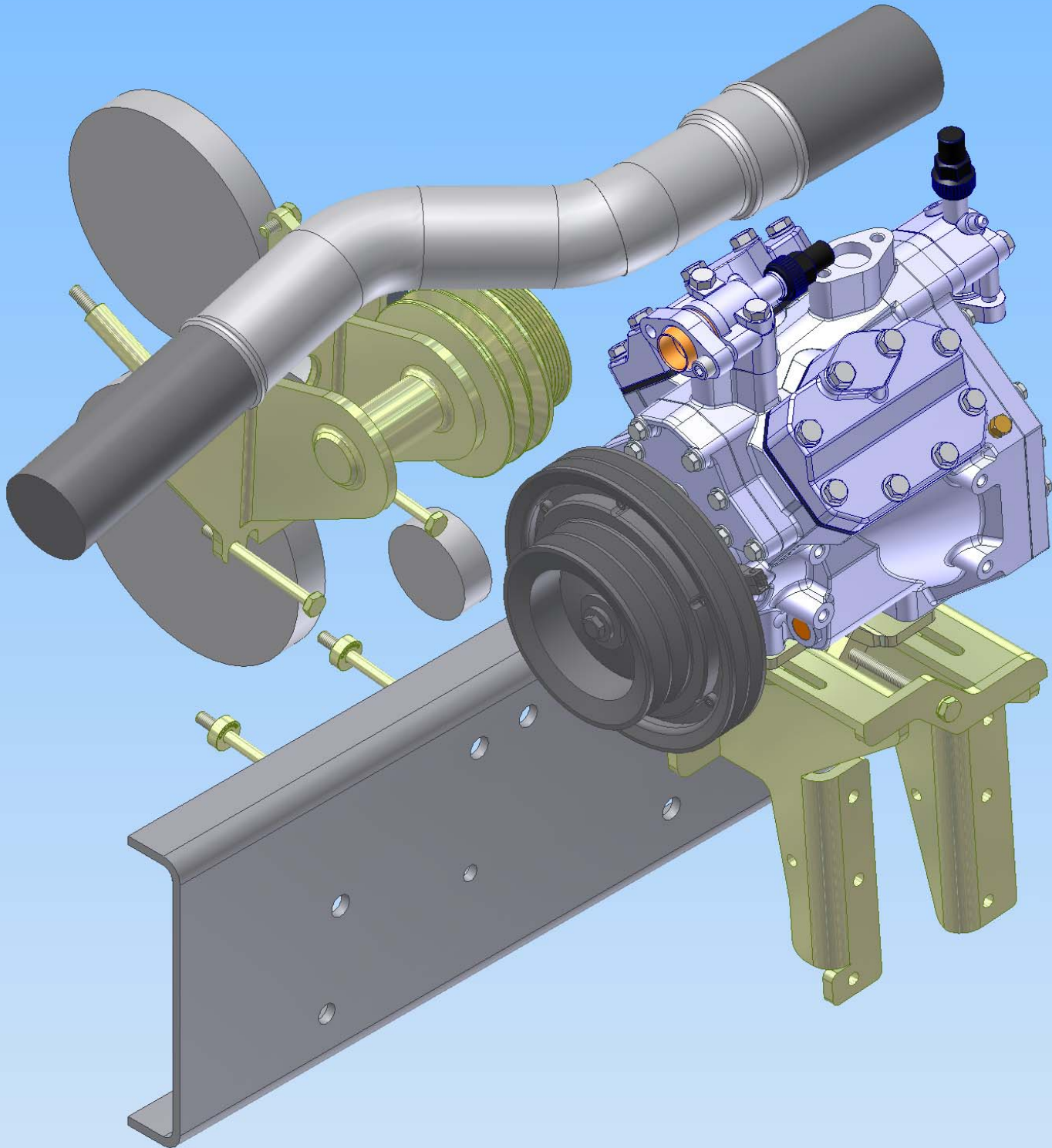
UNSPECIFIED TOLERANCES: H4, JS14
 DIMENSIONAL PRACTICE: AS SHOWN
 FINISH: UNLESS OTHERWISE SPECIFIED

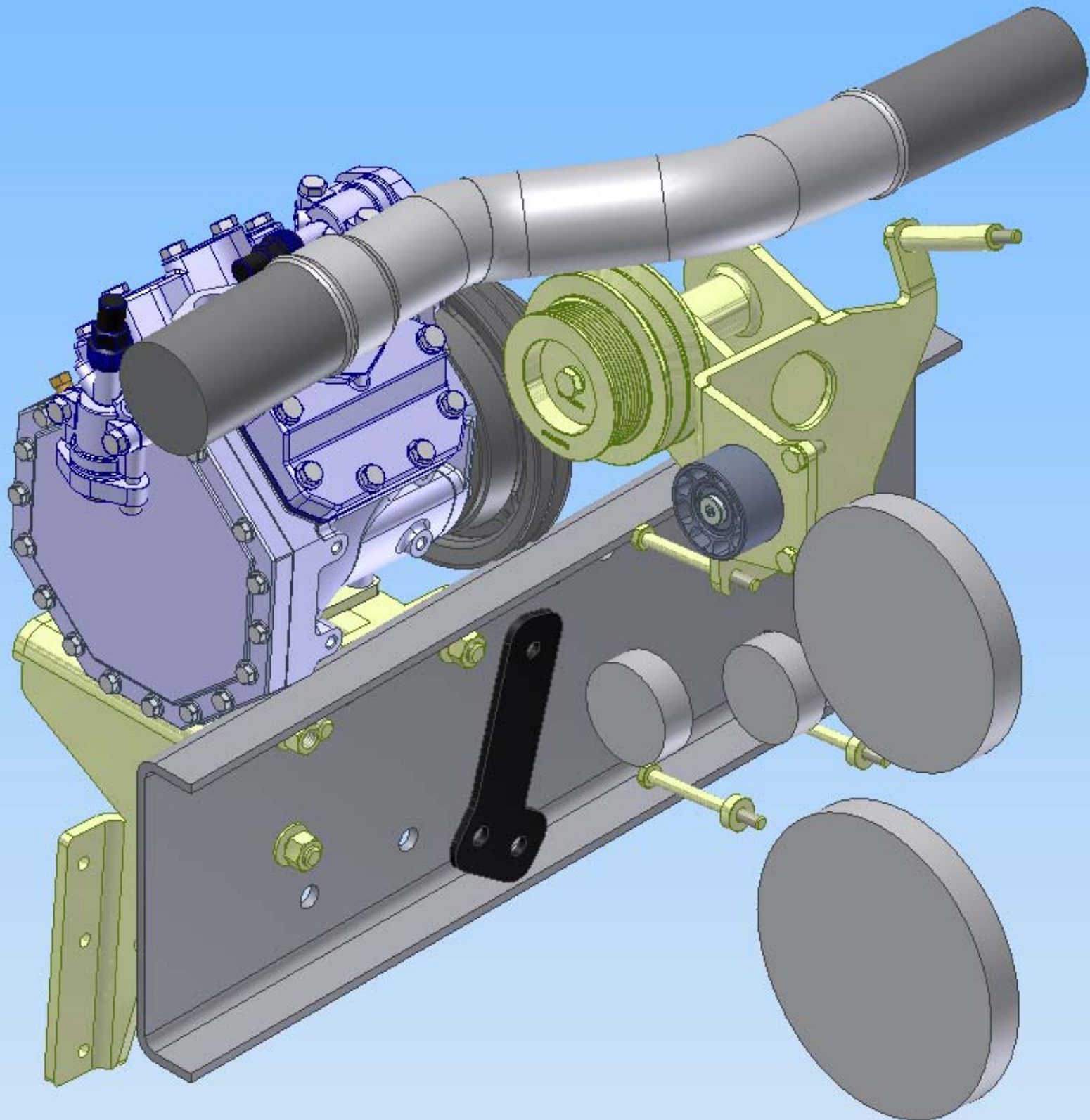
THIS DRAWING CONTAINS PROPRIETARY CONFIDENTIAL INFORMATION.
 INFORMATION IN IT AND NOT TO BE USED, REPRODUCED OR REPRODUCED
 WITHOUT EXPRESS WRITTEN PERMISSION OF THE COMPANY.











TransArctic A/C Compressor Mount Installation Disclaimer

All compressor mounts should be installed by qualified and trained personnel using proper tools and equipment in safe working conditions following industry standard guidelines for motor vehicle service and repair.

The installer of any compressor mount purchased from TransArctic must undertake all responsibility of issues arising from that compressor bracket being installed on any vehicle. As well as insure that a **proper and sufficient ground** is established between the compressors' clutches and the vehicle's engine. Mount functionality, operation and durability can all be compromised by an incompetent installation.

Due to the many different situations, parameters and application criteria, which are beyond the compressor mount manufacturer's control, TransArctic does not warrant design, durability, or operational functionality of any compressor mount improperly installed by another party.

With no implied guarantees it is the mount installer's strict responsibility to determine safety and functionality, of the compressor mount, at the time of installation.

Please contact TransArctic with any issue arising from installation so we may better improve the product. If you have any reservations about the compressor mount integrity contact TransArctic immediately at 1-877-COLD-AIR.