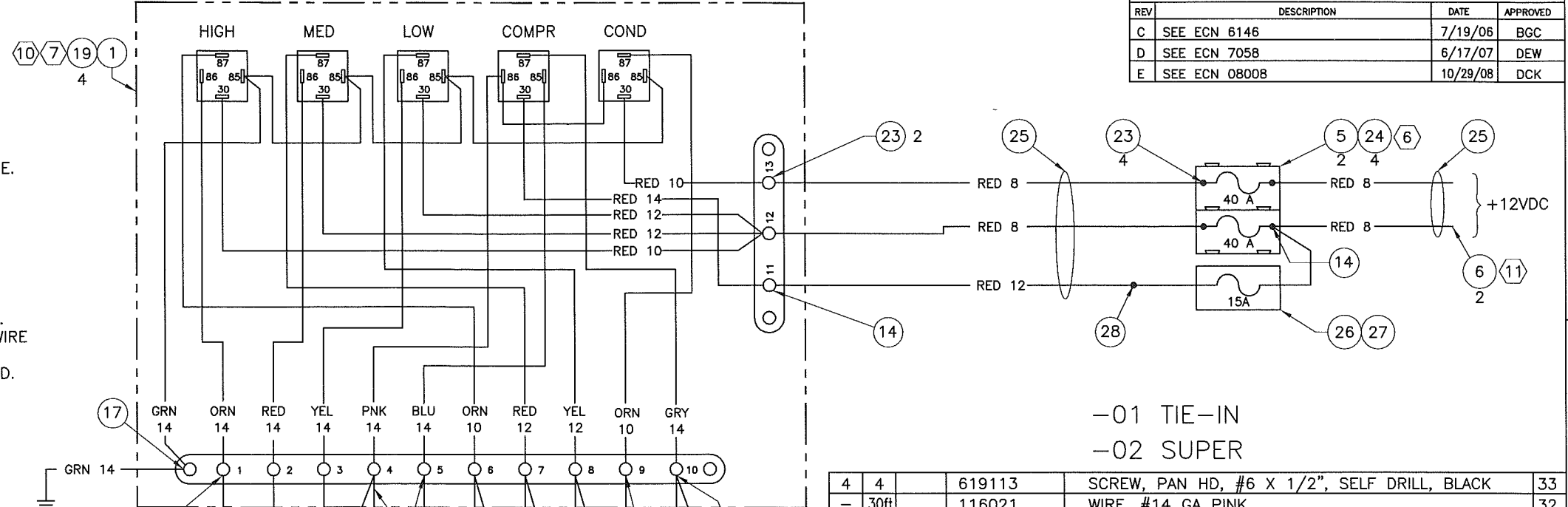


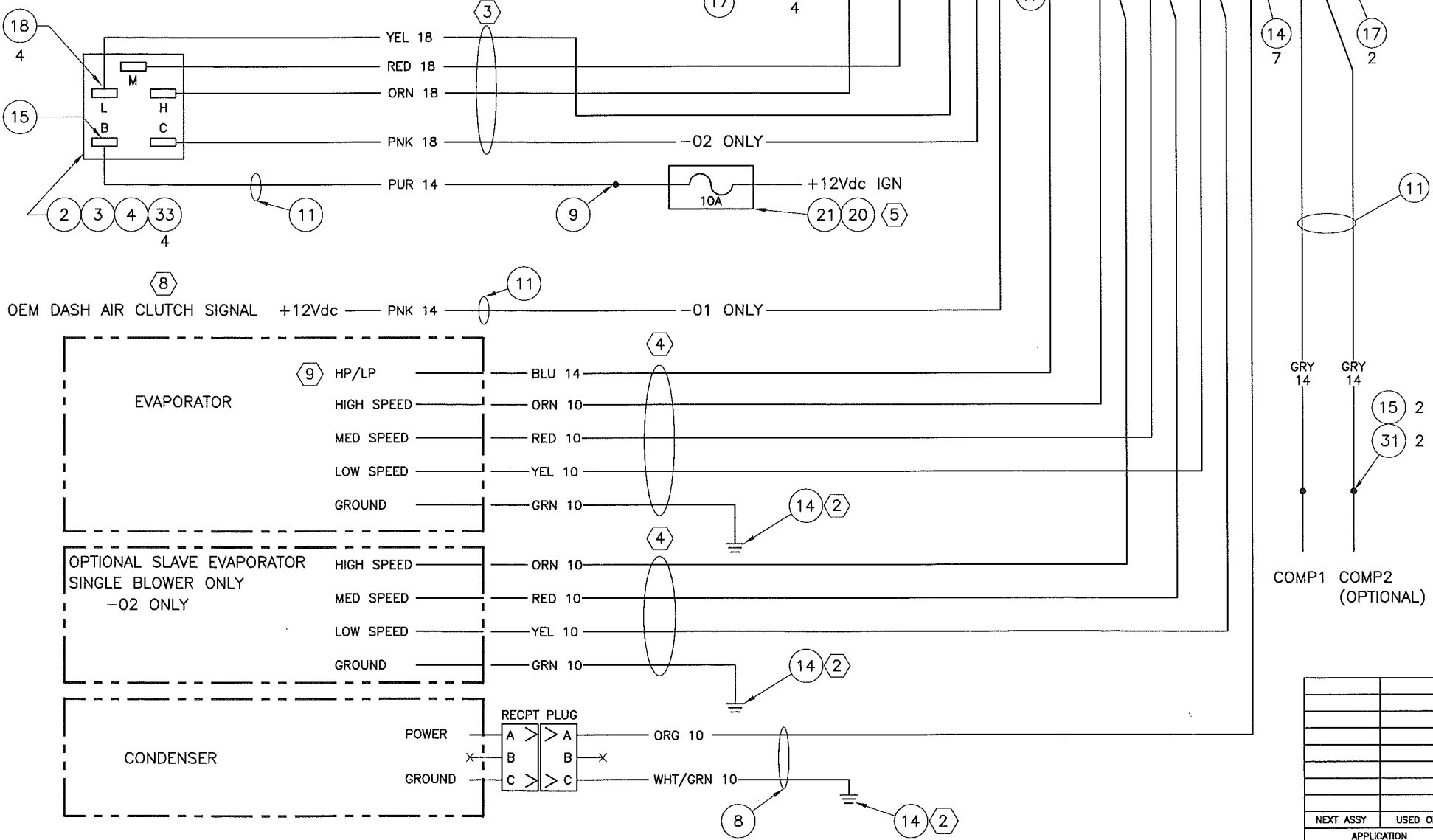
REVISIONS			
REV	DESCRIPTION	DATE	APPROVED
C	SEE ECN 6146	7/19/06	BGC
D	SEE ECN 7058	6/17/07	DEW
E	SEE ECN 08008	10/29/08	DCK

- NOTES:
- PACKAGE ALL ITEMS AND A COPY OF THIS DRAWING IN CARTON. IDENTIFY P/N AND REV LEVEL.
 - GROUND TO CHASSIS AT CLOSEST POINT TO AVOID VOLTAGE LOSS.
 - PART #116049 TO BE PURCHASED SEPARATELY. USE ITEM 12 TO SECURE HARNESS AT RELAY BOARD.
 - PART #116048 TO BE PURCHASED SEPARATELY. USE ITEM 13 TO SECURE HARNESS AT RELAY BOARD.
 - INSTALL ITEMS 20 AND 21 AS CLOSE AS POSSIBLE TO IGNITION SOURCE.
 - LOCATE POWER FUSES WITHIN 2 FT. OF POWER SOURCE AND BEFORE PASSING THROUGH ANY PARTITIONS. FUSES LOCATED ELSEWHERE MUST BE PRE-APPROVED BY TRANS/AIR ENGINEERING DEPARTMENT.
 - MOUNT RELAY BOARD IN A DRY LOCATION PROTECTED FROM ROAD SPRAY. IF THIS IS NOT POSSIBLE PROTECT BOARD WITH SPLASH COVER, T/A P/N 701258, PURCHASED SEPARATELY.
 - OEM CLUTCH WIRE MUST BE REMOVED FROM CLUTCH AND CONNECTED TO PINK T/A WHEN PIPING T/A SYSTEM WITH OEM DASH COMPRESSOR.
 - WHEN WIRING A T/A 77 WITH ONE COMPRESSOR, CONNECT BLUE 14 WIRE TO ONE SET OF HIGH AND LOW PRESSURE SWITCHES ONLY. THE SECOND SET OF PRESSURE SWITCHES SHOULD NOT BE CONNECTED.
 - TORQUE TERMINAL STRIP SCREWS TO 20 IN.-LBS.
 - USE ONLY BATTERY OR ALTERNATOR POSITIVE POST OR ADEQUATE OEM-PROVIDED STUD FOR POWER PICK-UP POINT. WHEN USING OEM-PROVIDED STUD, VERIFY OEM FEEDER TO STUD AND ANY CIRCUIT PROTECTION UPSTREAM OF STUD ARE SIZED SUFFICIENTLY FOR ADDED A/C LOAD.



-01 TIE-IN
-02 SUPER

QTY	UNIT	PART NO.	DESCRIPTION	ITEM NO.
4	4	619113	SCREW, PAN HD, #6 X 1/2", SELF DRILL, BLACK	33
-	30ft	116021	WIRE, #14 GA PINK	32
2	2	115041	TERMINAL, MALE 14-16 GA	31
24ft	24ft	116022	WIRE, #14 GA GRAY	30
8ft	8ft	116026	WIRE, #12 GA RED	29
1	1	115012	CONNECTOR, BUTT, 10-12 GA	28
1	1	110076	FUSE HOLDER, MINI, 12 GA	27
1	1	110050-15	FUSE, MINI, BLADE-TYPE, 15A	26
10ft	10ft	119002	LOOM, 1/2	25
4	4	619125	SCREW, PAN HD, #6 X 5/8", SELF DRILL	24
6	6	115003	TERMINAL, #10 RING, 8 GA	23
20ft	20ft	116040	WIRE, #8 GA RED	22
1	1	110050-10	FUSE, MINI, BLADE-TYPE, 10A	21
1	1	110075	FUSE HOLDER, MINI, 16 GA	20
14	14	619124	SCREW, HEX WASHER HD, #10 X .50 DRILL POINT	19
4	4	115029	TERMINAL, FEM 18-22 GA	18
5	6	115001	TERMINAL, #10 RING, 14-16 GA	17
4	3	115108	TERMINAL, #10 RING, 18-22 GA	16
3	3	115031	TERMINAL, FEM 14-16 GA	15
12	8	115016	TERMINAL, #10 RING 10-12 GA	14
5	5	611026	CLAMP, INSULATED .75 ID	13
5	5	611045	CLAMP, INSULATED .38 ID	12
32ft	62ft	119005	LOOM, 3/8	11
4ft	4ft	116004	WIRE, #14 GA GREEN	10
1	1	115007	CONNECTOR, BUTT, 14-16 GA	9
1	1	701336-30	HARNESS, CONDENSER	8
20ft	20ft	116023	WIRE, #14 GA PURPLE	7
2	2	115004	TERMINAL, 5/16 RING, 8 GA	6
2	2	701401	FUSE HOLDER ASSEMBLY, MIDI, BOLT-ON	5
1	1	701415	PLATE, SWITCH	4
1	1	610008	KNOB, ROTARY SWITCH	3
1	1	113006	SWITCH, ROTARY, 4 POSITION	2
1	1	701409-01	RELAY BOARD ASSEMBLY	1



QTY REQD PER ASSY	FSCM NO.	PART NO.	DESCRIPTION	MATERIAL / SPECIFICATION	ITEM NO.
-02	-01				

UNLESS OTHERWISE SPECIFIED: DIMENSIONS ARE IN INCHES TOLERANCES ON DECIMALS
2PL ± .015 3PL ± .010 ANGLE ± .5°

INTERPRET DRAWING PER DOD-STD-100 REMOVE BURRS AND SHARP EDGES DO NOT SCALE DRAWING

MATERIAL:

TRANS/AIR MFG CORP
ELECTRICAL INSTALLATION, BASIC II, 3 SPD, (1) OR (2) COMP, SC4

DRAWN BY: BGC DATE: 12/22/03
CHECKER: [Signature] DATE: [Signature]
DRAWING APPROVAL: [Signature]
DESIGN APPROVAL: [Signature]

SIZE: D CODE: DWG NO. 503851 REV E
SCALE: NTS SHEET

NEXT ASSY	USED ON
	APPLICATION