

Bill of Materials Listing

TransArctic Canada Inc.

12/24/2010

Page 1 of 1

Product Number		Description	Bin	Date	Weight	Uof M	Yield
Line	Component Prod#	Description		Unit	Qty		
KMN82072		Mt. Kit, MF DT, CE300, 2 TM-16, '10		11/10/2010	13.29		0
10	BEL02615	Belt, 10gr, 2615mm (103")		each	1		
20	BMN80034	Bkt, Comp, Upper, CE200		each	1		
30	BMN80035	Bkt, Comp, Lower, CE300		each	1		
40	BMN80038	Bkt, Rad Hose, PMax DT, CE300		each	1		
50	BMN80066	Bkt, Idler, Slot PL, Weldmnt, FE300, '09		each	1		
60	BMS16022	Bkt, TM-16 Spacer Plate		each	2		
70	BMS16023	Bkt, 12.7mm Spacer Plate		each	2		
80	PUL80074	Pulley, Idler, B/S, Wide, 76d (89102)		each	2		
90	SCD14010	Spacer, Col, Drl, 14mm x25.4o x10.32i		each	1		
100	SCD20010	Spacer, Col, Drl, 20mm x 33.34o x 10.32i		each	1		
110	SLV17010	Sleeve, Pulley, 16.9o x 22.23mm x 10.32i		each	1		
120	CLP20040	Clamp, "P" type, #40, 1/2"w, 2 1/2", PC		each	1		
130	CLP36001	Clamp, Gear, #36, 1 13/16-2 3/4 (46/70mm)		each	2		
140	KBN82672	Bag Kit, Fasteners, KMN82672/2072		each	1		

Bill of Materials Listing

TransArctic Canada Inc.

12/24/2010
Page 1 of 1

Product Number	Description	Date	Weight	Uof M	Yield
Line	Component Prod#	Bin	Unit	Qty	
KBN82672	Bag Kit, Fasteners, KMN82672/2072	11/10/2010	1.76		0
10	BTC10080		Bolt, Hex, 10 x 1.5 x 80mm, 10.9, Plt,FT	each	1
20	BTC10040		Bolt, Hex, 10 x 1.5 x 40mm, 10.9, Plt,FT	each	1
30	BTC08140		Bolt, Hex, 8 x 1.25 x 140mm, 10.9, Plt	each	4
40	BTC08110		Bolt, Hex, 8 x 1.25 x 110mm, 10.9, Plt	each	4
50	BTC08100		Bolt, Hex, 8 x 1.25 x 100mm, 10.9, Plt	each	4
60	BTP04075		Bolt, Hex, 1/4-20unc, .75", 5, Plt	each	1
70	BTS10001		Bolt, Shoulder, 10mm (89064)	each	1
80	CSF10046		Capscrew, FH, 10 x 1.5 x 45mm, 10.9,Plt	each	1
90	NTA10000		Nut, Hex, 10 x 1.5, 8.8, Plt	each	1
100	NTA08000		Nut, Hex, 8 x 1.25, 8.8, Plt	each	1
110	NTP04000		Nut, Hex, 1/4-20unc, 5, Plt	each	1
120	WFA10002		Washer, Flat, 10mm, Hvy, 8.8, Plt	each	1
130	WFA10000		Washer, Flat, 10mm, 8.8, Plt	each	2
140	WFA08000		Washer, Flat, 8mm, 8.8, Plt	each	8
150	WFS04003		Washer, Flat, 1/4", 2, USS, Plt	each	1
160	WLA10000		Washer, Lock, 10mm, 8.8, Plt	each	2
170	WLA08000		Washer, Lock, 8mm, 8.8, Plt	each	9



NOTE: CARRIER COMPRESSOR PART # 76-62287-xx

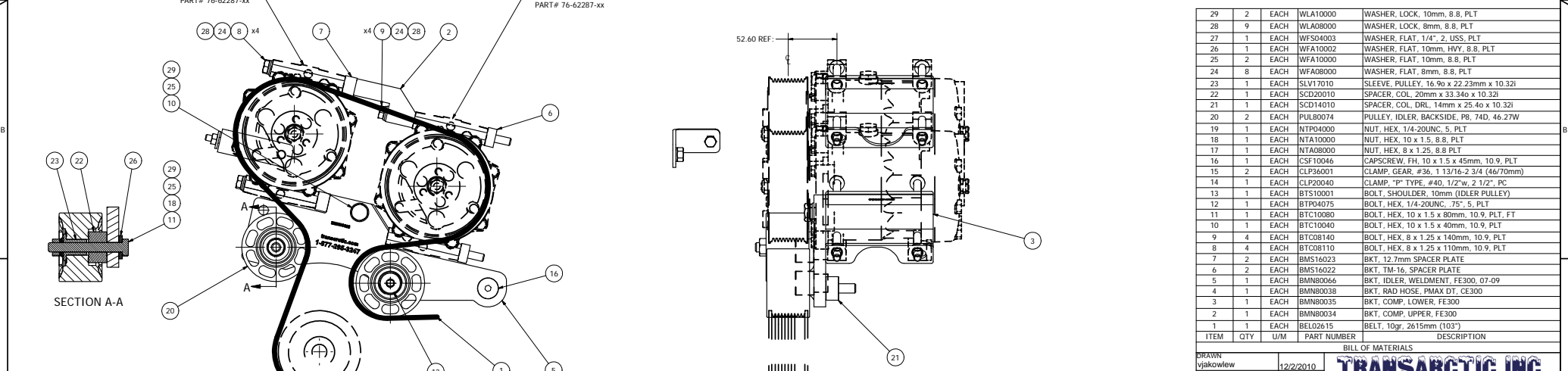
NOTE: CARRIER COMPRESSOR PART # 76-62287-xx

ISOMETRIC VIEW

NOTES:

1) USE SERVICABLE THREADLOCKER ON ALL FASTENERS TO ENGINE COMPONENTS AND TORQUE ALL BOLTS TO S.A.E. SPECIFICATIONS.

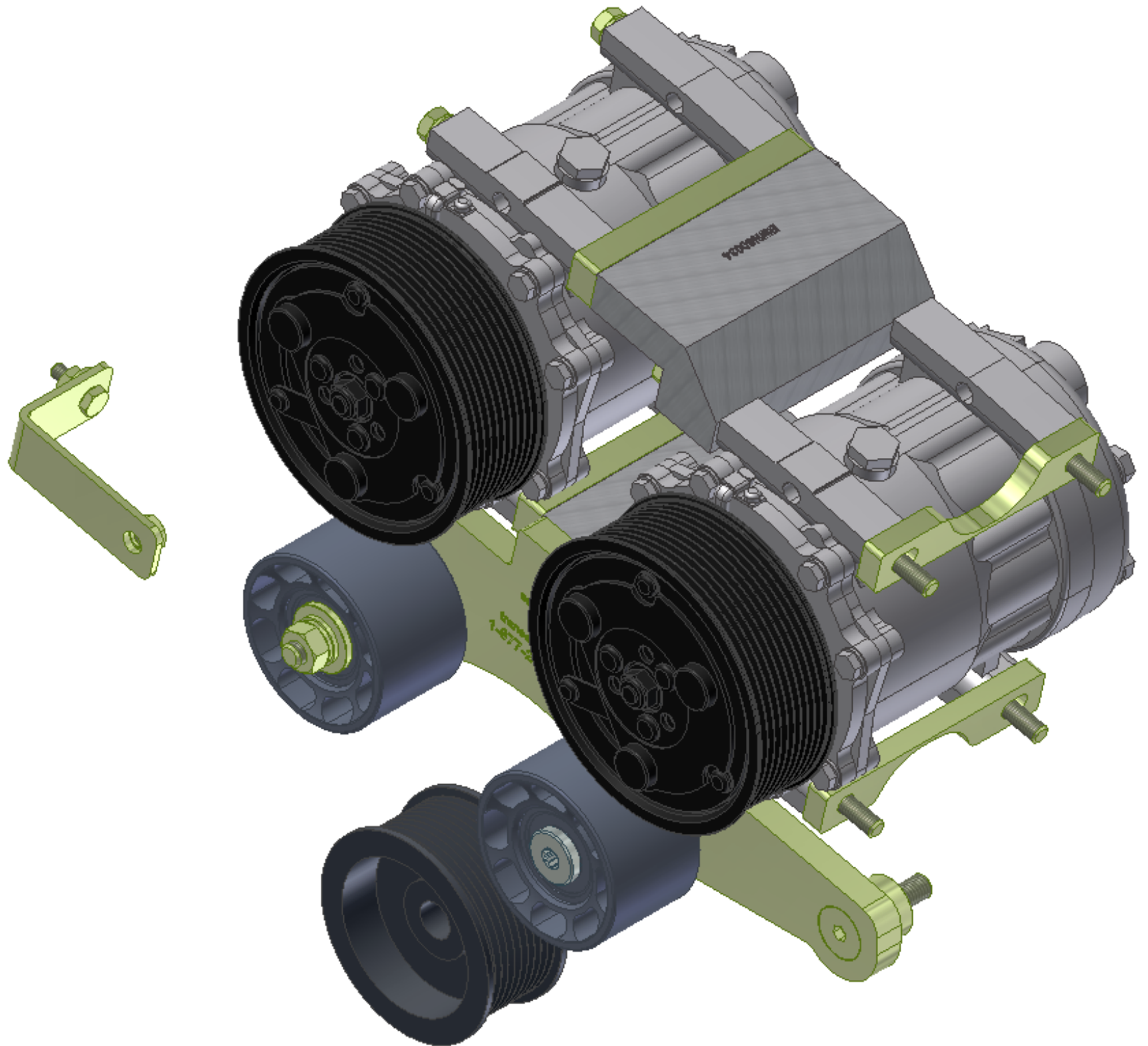
2) SEE "TRANSARGTIC A/C COMPRESSOR MOUNT INSTALLATION DISCLAIMER".

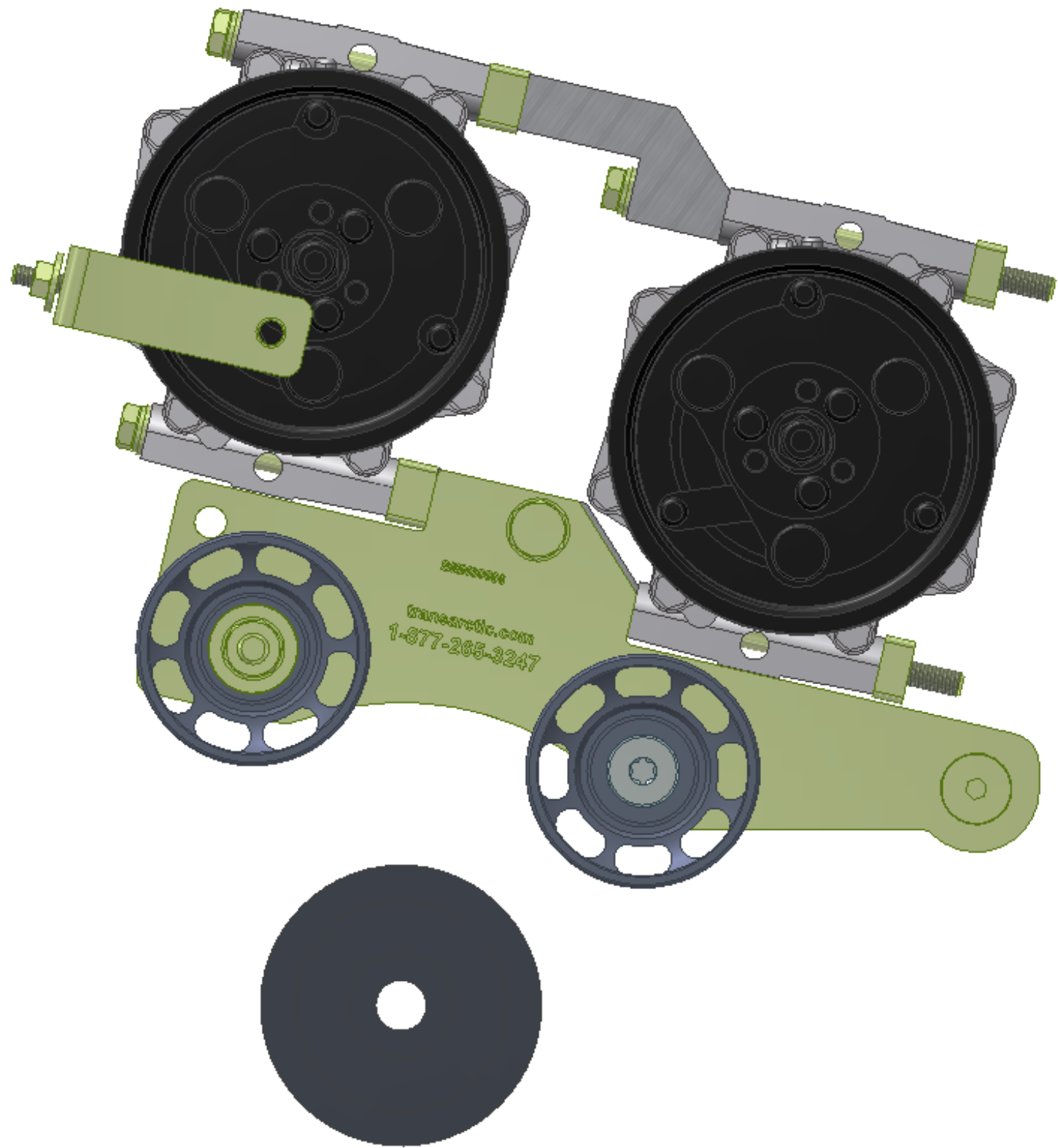


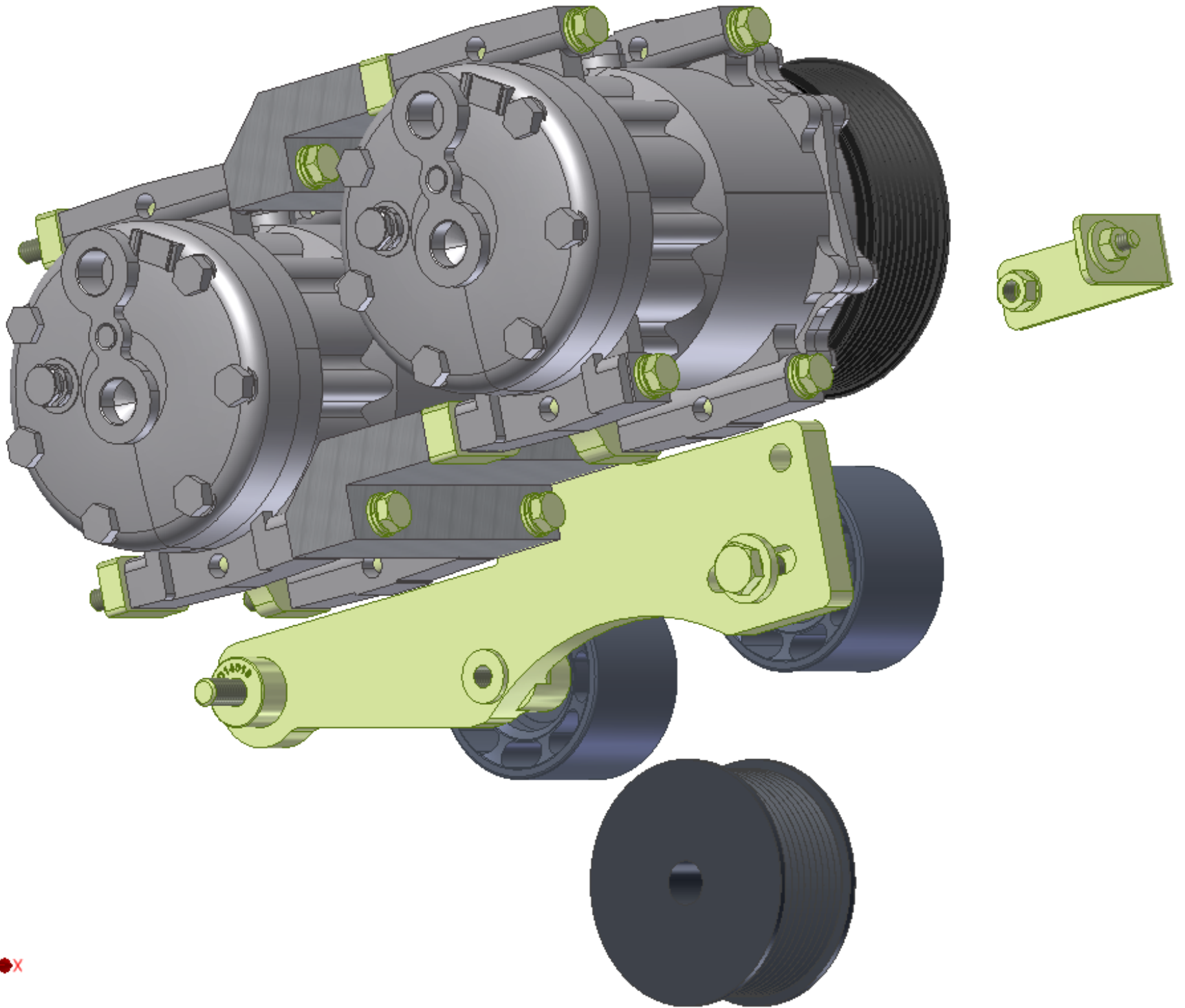
ITEM	QTY	U/M	PART NUMBER	DESCRIPTION
29	2	EACH	WLA10000	WASHER, LOCK, 10mm, 8.8, PLT
28	9	EACH	WLA08000	WASHER, LOCK, 8mm, 8.8, PLT
27	1	EACH	WFS04003	WASHER, FLAT, 1/4", 2, USS, PLT
26	1	EACH	WFA10002	WASHER, FLAT, 10mm, HAVY, 8.8, PLT
25	2	EACH	WFA10000	WASHER, FLAT, 10mm, 8.8, PLT
24	8	EACH	WFA08000	WASHER, FLAT, 8mm, 8.8, PLT
23	1	EACH	SLV17010	SLEEVE, PULLEY, 16.90 x 22.23mm x 10.32i
22	1	EACH	SCD20010	SPACER, COL, 20mm x 33.340 x 10.32i
21	1	EACH	SCD14010	SPACER, COL, DRL, 14mm x 25.40 x 10.32i
20	2	EACH	PUL80074	PULLEY, IDLER, BACKSIDE, PB, 74D, 46.27W
19	1	EACH	NTP04000	NUT, HEX, 1/4-20UNC, 5, PLT
18	1	EACH	NTA10000	NUT, HEX, 10 x 1.5, 8.8, PLT
17	1	EACH	NTA08000	NUT, HEX, 8 x 1.25, 8.8, PLT
16	1	EACH	CSF10046	CAPSCREW, FH, 10 x 1.5 x 45mm, 10.9, PLT
15	2	EACH	CLP36001	CLAMP, GEAR, #36, 1 13/16-2 3/4 (46/70mm)
14	1	EACH	CLP20040	CLAMP, "P" TYPE, #40, 1 1/2"x, 2 1/2", PC
13	1	EACH	BTS10001	BOLT, SHOULDER, 10mm (IDLER PULLEY)
12	1	EACH	BTP04075	BOLT, HEX, 1/4-20UNC, 75", 5, PLT
11	1	EACH	BTC10080	BOLT, HEX, 10 x 1.5 x 80mm, 10.9, PLT, FT
10	1	EACH	BTC10040	BOLT, HEX, 10 x 1.5 x 40mm, 10.9, PLT
9	4	EACH	BTC08140	BOLT, HEX, 8 x 1.25 x 140mm, 10.9, PLT
8	4	EACH	BTC08110	BOLT, HEX, 8 x 1.25 x 110mm, 10.9, PLT
7	2	EACH	BMS16023	BKT, 12.7mm SPACER PLATE
6	2	EACH	BMS16022	BKT, TM-16, SPACER PLATE
5	1	EACH	BMN80066	BKT, IDLER, WELDMNT, FE300, 07-09
4	1	EACH	BMN80038	BKT, RAD HOSE, PMAK DT, CE300
3	1	EACH	BMN80035	BKT, COMP, LOWER, FE300
2	1	EACH	BMN80034	BKT, COMP, UPPER, FE300
1	1	EACH	BELO2615	BELT, 10gr, 2615mm (103")

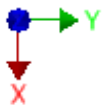
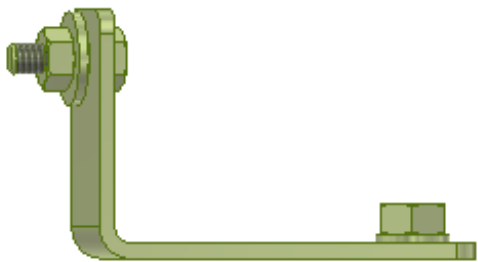
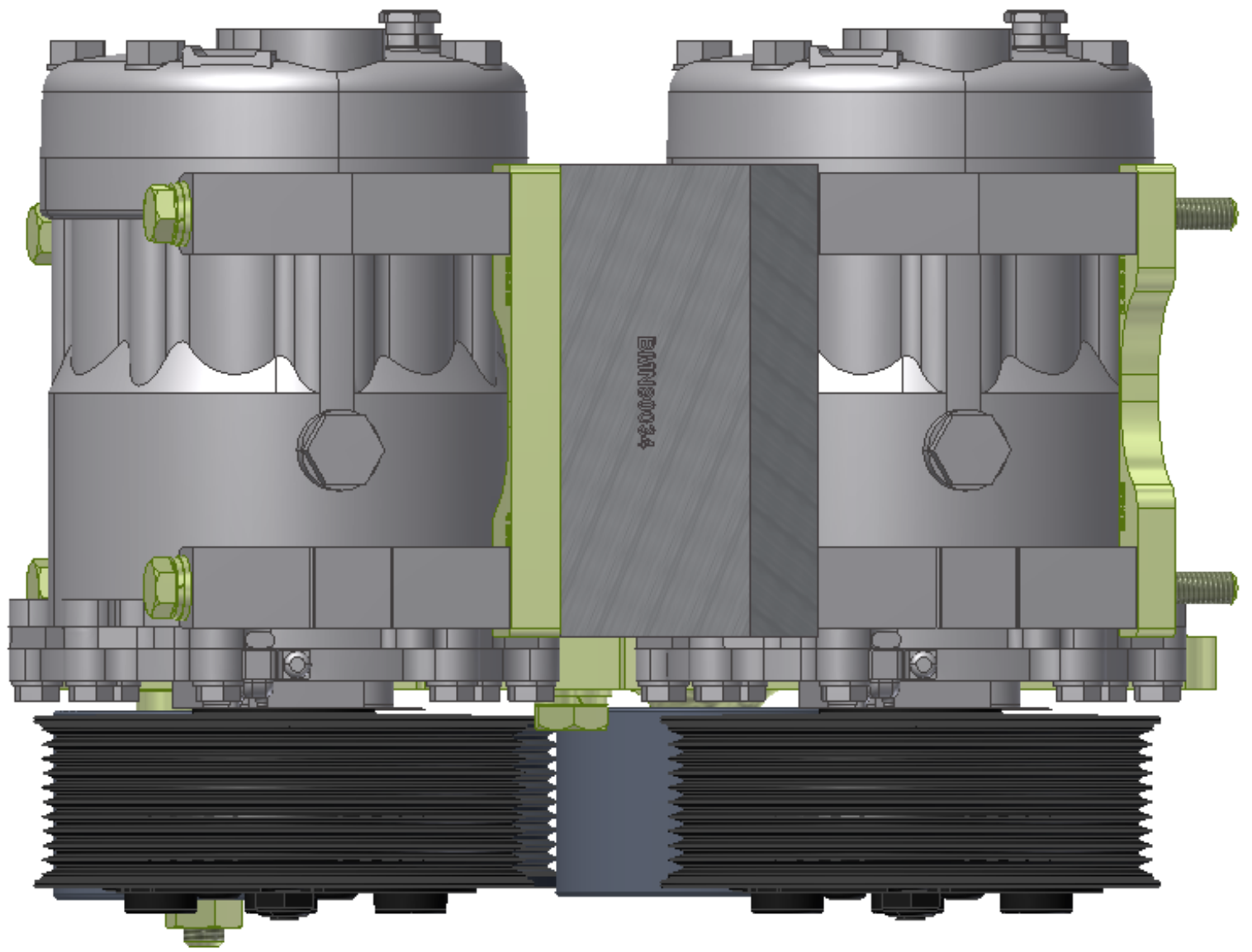
BILL OF MATERIALS			
DRAWN	vjakovlew	12/2/2010	TRANSARGTIC INC.
CHECKED	James Stewart	12/2/2010	
RELEASED TO PRODUCTION	1/3/2011	VAL: GA	TITLE
REVISION	DESCRIPTION	DATE	BY
1		1/3/2011	James Stewart
2		12/2/2010	Ron Ingram
3		12/2/2010	Dale Mason

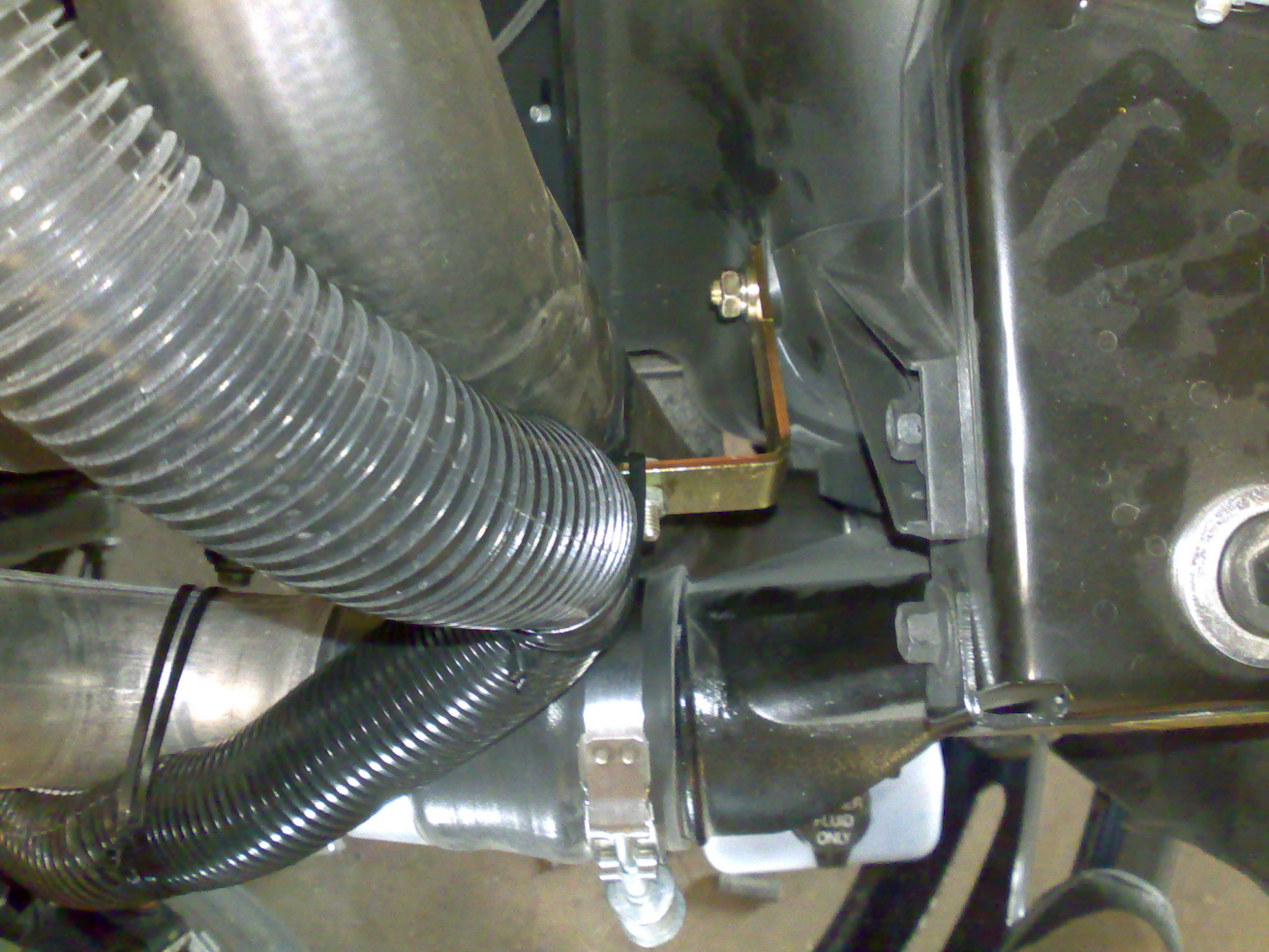
UNSPECIFIED TOLERANCES:	ALL DIMS	UNIT	THIRD ANGLE PROJECTION	DRAWING UNIT OF MEASURE	MM (INCH)
ONE DECIMAL PLACE (X)	0.1	MM	THIRD ANGLE PROJECTION	MM (INCH)	
TWO DECIMAL PLACE (X)	0.05	MM			
THREE DECIMAL PLACE (X)	0.025	MM			
FRACTIONAL (X) 1/16"	0.0625	INCH			











TransArctic A/C Compressor Mount Installation Disclaimer

All compressor mounts should be installed by qualified and trained personnel using proper tools and equipment in safe working conditions following industry standard guidelines for motor vehicle service and repair.

The installer of any compressor mount purchased from TransArctic must undertake all responsibility of issues arising from that compressor bracket being installed on any vehicle. As well as insure that a **proper and sufficient ground** is established between the compressors' clutches and the vehicle's engine. Mount functionality, operation and durability can all be compromised by an incompetent installation.

Due to the many different situations, parameters and application criteria, which are beyond the compressor mount manufacturer's control, TransArctic does not warrant design, durability, or operational functionality of any compressor mount improperly installed by another party.

With no implied guarantees it is the mount installer's strict responsibility to determine safety and functionality, of the compressor mount, at the time of installation.

Please contact TransArctic with any issue arising from installation so we may better improve the product. If you have any reservations about the compressor mount integrity contact TransArctic immediately at 1-877-COLD-AIR.

Mark OEM tensioner location

Install Kit

Check for Interferences

Check to ensure that the proper OEM tensioner orientation is maintained

Run engine with A/C system engaged for at least 10 minutes to run in belt

Check OEM tensioner orientation and adjust as required

Responsabilidad limitada de TransArctic en la instalación del soporte del compresor

Todos los soportes de los compresores deben ser instalados por personas calificadas y entrenadas, usando para ello los equipos y herramientas necesarios para esta labor en buenas condiciones y según las normas y guías para el servicio y/o reparación de motores de vehículos.

El instalador de los soportes comprados en TransArctic asume toda la responsabilidad de cualquier problema que surga en el soporte del compresor al vehículo; de igual manera es responsable que el cable a tierra sea conectado entre el embrague del compresor y el motor del vehículo.

Se advierte que el buen funcionamiento y la durabilidad del soporte pueden ser comprometidos por defectos en su instalación.

Debido a las diversas situaciones que se puedan presentar fuera del control del fabricante, TransArctic no garantiza el diseño, la durabilidad o el correcto funcionamiento de cualquier equipo inapropiadamente instalado por terceros.

Esta sobreentendido que el Instalador del montaje del compresor es estrictamente responsable de la seguridad y funcionamiento del equipo en el momento de la instalación.

Si tuviera algún problema o duda acerca de la instalación del soporte del compresor pongase en contacto inmediatamente con TransArctic al teléfono 1-877-COLD-AIR de modo que podamos mejorar nuestro producto.

Note la ubicación del medidor de tensión OEM

Instale el equipo

Controlar si hay interferencias.

Asegure que el medidor de tensión mantenga la orientación justa.

Encienda el motor por lo menos 10 minutos con el sistema A/C enganchado para que la correa corra

Controle la orientación justa del medidor de tensión y ajuste a las condiciones requeridas del fabricante