

Bill of Materials Listing

TransArctic Canada Inc.

11/2/2021
Page 1 of 1

Product Number	Date	Description	Uof M	Weight	Yield	
Line	Qty	Component Prod#	Rev#	Bin	Unit	
KMP82730	6/9/2021	0 Mt. Kit, PSI 8.8, TM-43, ICCE, '21			42.81	0
10	1	BEL83106			each	
20	1	BMN80083	0		each	
30	1	BMN80097	0		each	
40	1	BMN80112	A		each	
50	1	BMN80113	0		each	
60	1	PUL80076			each	
70	1	SCD17910	0		each	
80	1	SCD41910	0		each	
90	1	SLV17010	1		each	
100	1	KBP82730	0		each	

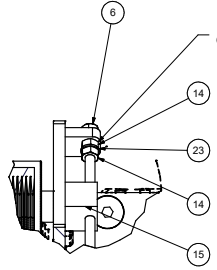
Bill of Materials Listing

TransArctic Canada Inc.

11/2/2021
Page 1 of 1

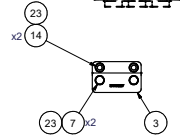
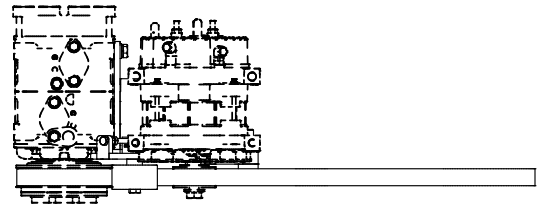
Product Number	Date	Description	Uof M	Weight	Yield	
Line	Qty	Component Prod#	Rev#	Bin	Unit	
KBP82730	8/11/2021	0 Bag Kit, Fasteners, KMP82730			1.24	0
10	1	BTA08141			each	
20	2	BTC08020			each	
30	4	BTC08035			each	
40	1	BTC10065			each	
50	1	BTC10070			each	
60	3	BTC12035			each	
70	5	CSF08021			each	
80	1	CSF12031			each	
90	4	NTA08000			each	
100	1	NTS10354	1		each	
110	4	WFA08000			each	
120	2	WFA10000			each	
130	3	WFA12000			each	
140	9	WLA08000			each	
150	2	WLA10000			each	
160	3	WLA12000			each	

8 7 6 5 4 3 2 1

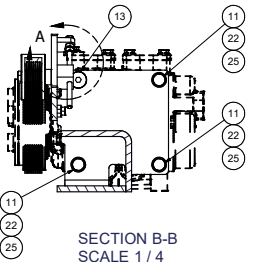
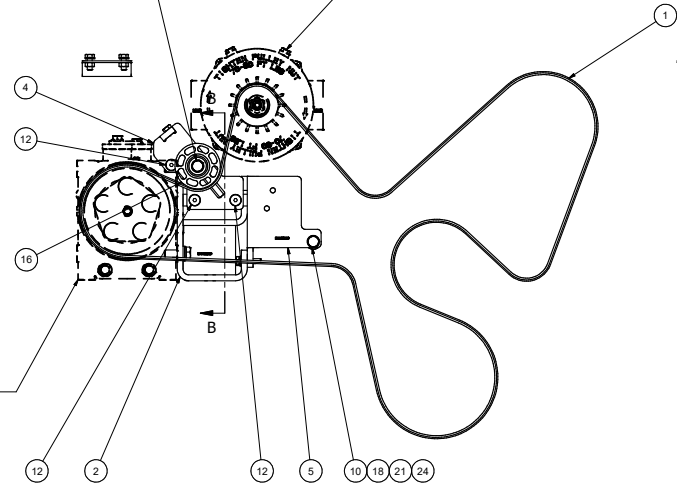


DETAIL A
SCALE 1/2

NOTE: DO NOT OVERTIGHTEN NUT TO MAIN BRACKET TAB.
ONLY SNUG FIT REQUIRED, FOR BOLT TO SPIN FREELY WHEN ADJUSTING PULLEY.

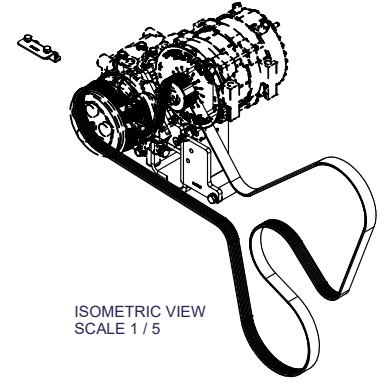


NOTE: SHOWING ALTERNATOR AS REFERENCE.



SECTION B-B
SCALE 1/4

NOTE:
SHOWING (1) x TRANSARTIC
COMPRESSORS
PART#: CMV25980 (425cc)
AS REFERENCE.



ISOMETRIC VIEW
SCALE 1/5

NOTES:
1) USE SERVICABLE THREADLOCKER ON ALL FASTENERS TO ENGINE COMPONENTS AND TORQUE ALL BOLTS TO S.A.E. SPECIFICATIONS.
2) SEE "TRANSARTIC A/C COMPRESSOR MOUNT INSTALLATION DISCLAIMER".

ITEM	QTY	U/M	PART NUMBER	DESCRIPTION
25	3	EACH	WLA12000	WASHER, LOCK, 12mm, 8.8, PLT
24	2	EACH	WLA10000	WASHER, LOCK, 10mm, 8.8, PLT
23	9	EACH	WLA08000	WASHER, LOCK, 8mm, 8.8, PLT
22	3	EACH	WFA12000	WASHER, FLAT, 12mm, 8.8, PLT
21	2	EACH	WFA10000	WASHER, FLAT, 10mm, 8.8, PLT
20	4	EACH	WFA08000	WASHER, FLAT, 8mm, 8.8, PLT
19	1	EACH	SLV17010	SLEEVE, PULLEY, 16.90 x 22.23mm x 10.32i
18	1	EACH	SCD41910	SPACER, COL, DRL, 41.9mm x 25.40 x 10.30i
17	1	EACH	SCD17910	SPACER, COL, DRL, 17.9mm x 25.40 x 10.32i
16	1	EACH	PUL80076	PULLEY, IDLER, BACKSIDE, P8, 76D, 39W
15	1	EACH	NTS10354	NUT, TENSIONER, 35.4 o/a, '21
14	4	EACH	NTA08000	NUT, HEX, 8 x 1.25, 8.8 PLT
13	1	EACH	CSF12031	CAPSCREW, FH, 12 x 1.75 x 30mm, 10.9, PLT
12	5	EACH	CSF08021	CAPSCREW, FH, 8 x 1.25 x 20mm, 10.9, PLT
11	3	EACH	BTC12035	BOLT, HEX, 12 x 1.75 x 35mm, 10.9, PLT
10	1	EACH	BTC10070	BOLT, HEX, 10 x 1.5 x 70mm, 10.9, PLT
9	1	EACH	BTC10065	BOLT, HEX, 10 x 1.5 x 65mm, 10.9, PLT
8	4	EACH	BTC08035	BOLT, HEX, 8 x 1.25 x 35mm, 10.9, PLT
7	2	EACH	BTC08020	BOLT, HEX, 8 x 1.25 x 20mm, 10.9, PLT
6	1	EACH	BTA08141	BOLT, HEX, 8 x 1.25 x 140mm, 8.8, PLT, FT
5	1	EACH	BMN80113	BKT, WELDMT, TENSIONER, PSI 8.8, '21
4	1	EACH	BMN80112	BKT, WELDMT, TM-43, IC CE, JACKSCREW, '21
3	1	EACH	BMN80097	BKT, WELDMT, RAD BOTTLE, RISER, TM-43, IC CE, '21
2	1	EACH	BMN80083	BKT, WELDMT, TM-43, SIDE MOUNT, IC CE, '21
1	1	EACH	BEL83106	BELT, 8GR, 3106mm (122.3")

DRAWN		CHECKED		TITLE	
irodriguez	7/20/2021	Vai Jakowlew	7/20/2021	MT. KIT, PSI 8.8, TM-43, ICCE, '21	
REV	ECN	DESCRIPTION	DATE	BY	APPROVED
0		RELEASED TO PRODUCTION	7/20/2021	JRR	
				James Stewart	7/20/2021
				James Stewart	7/20/2021
				Dale Mason	7/20/2021

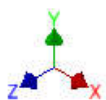
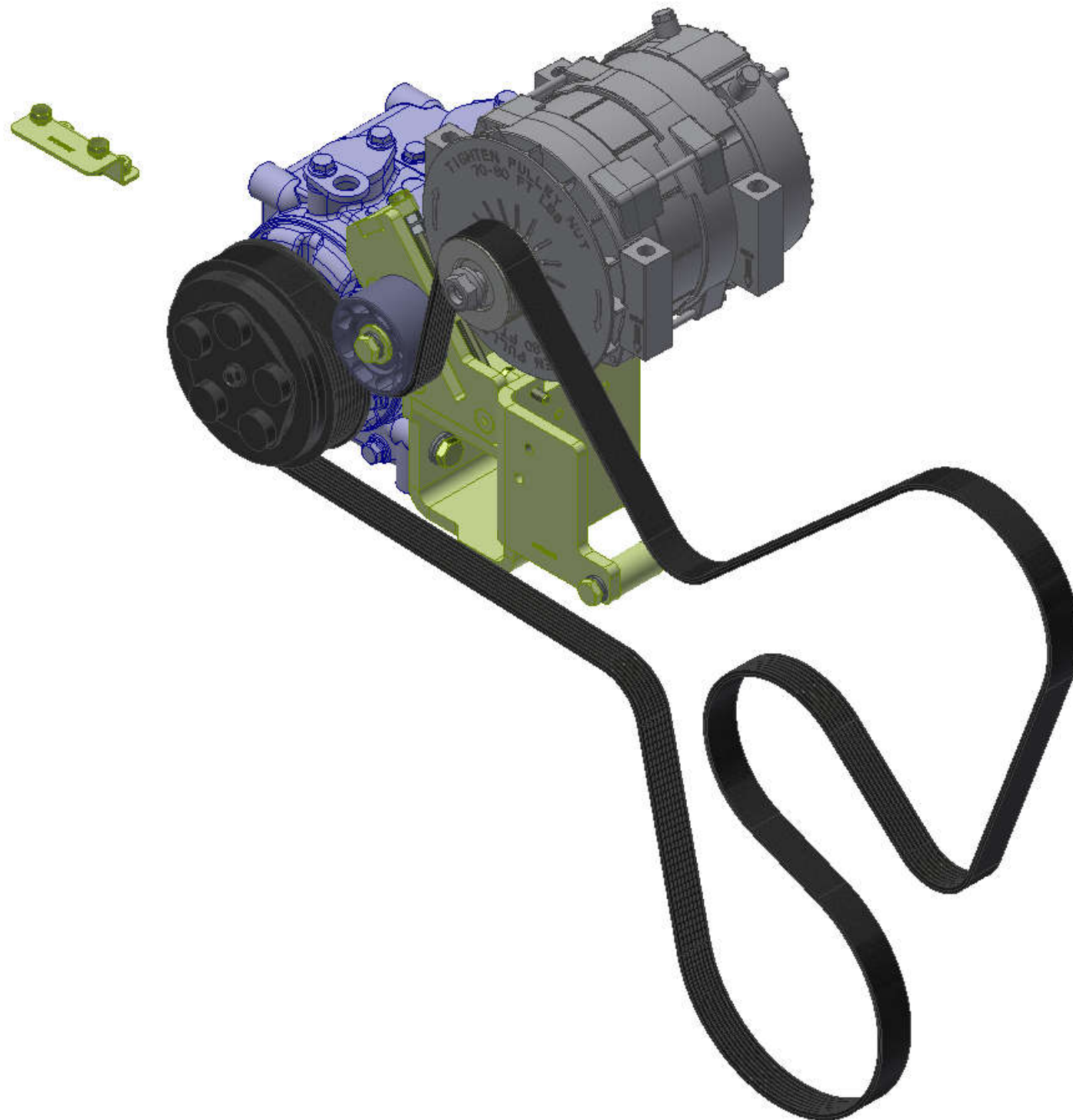
UNSPECIFIED TOLERANCES:		ALL DIMS	
ONE DECIMAL PLACE (.X)	FR	FR	FR
TWO DECIMAL PLACE (.XX)	CS	CS	CS
THREE DECIMAL PLACE (.XXX)	CS	CS	CS
FRACTIONAL (1/16")	CS	CS	CS

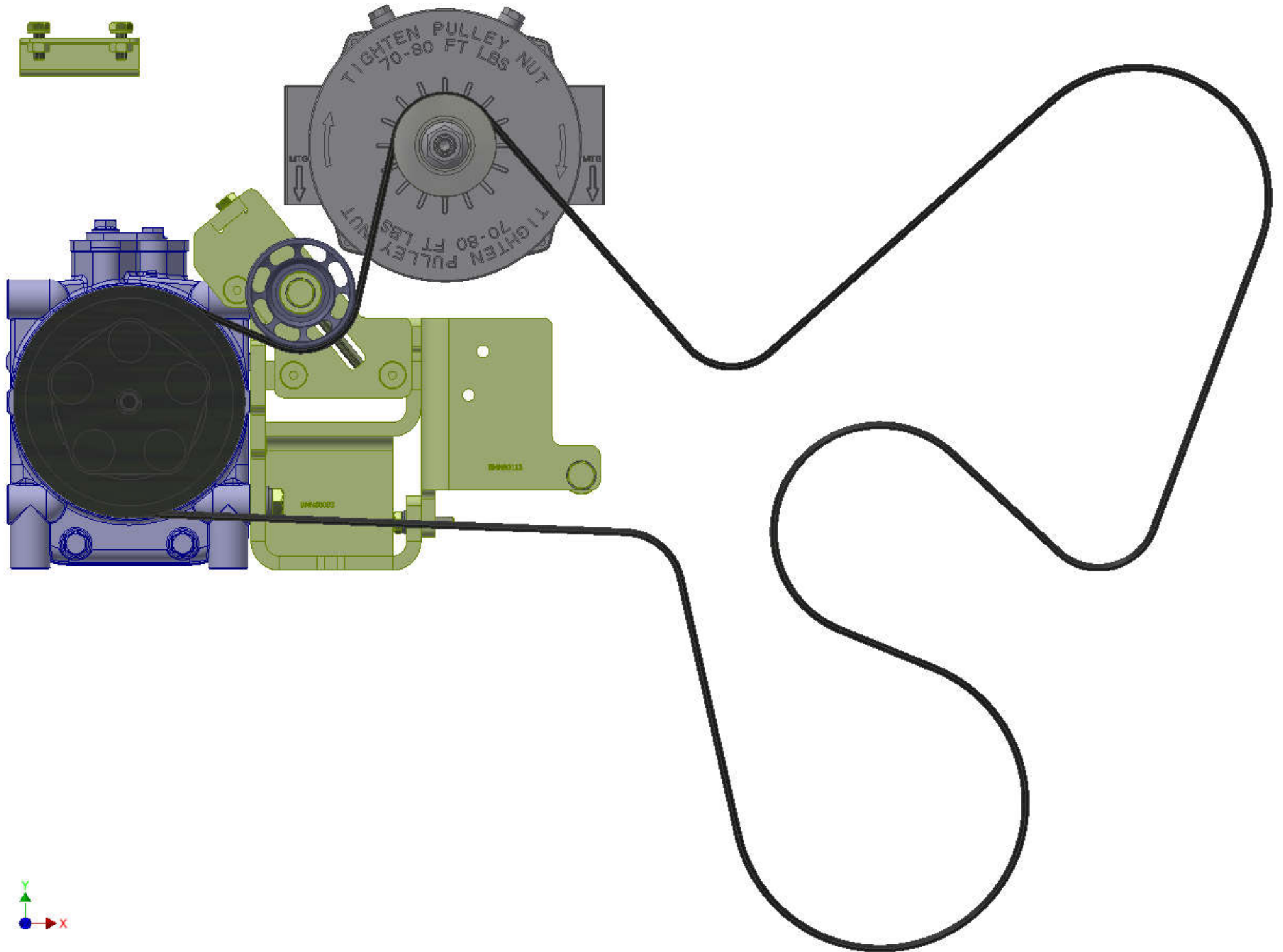


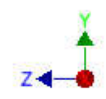
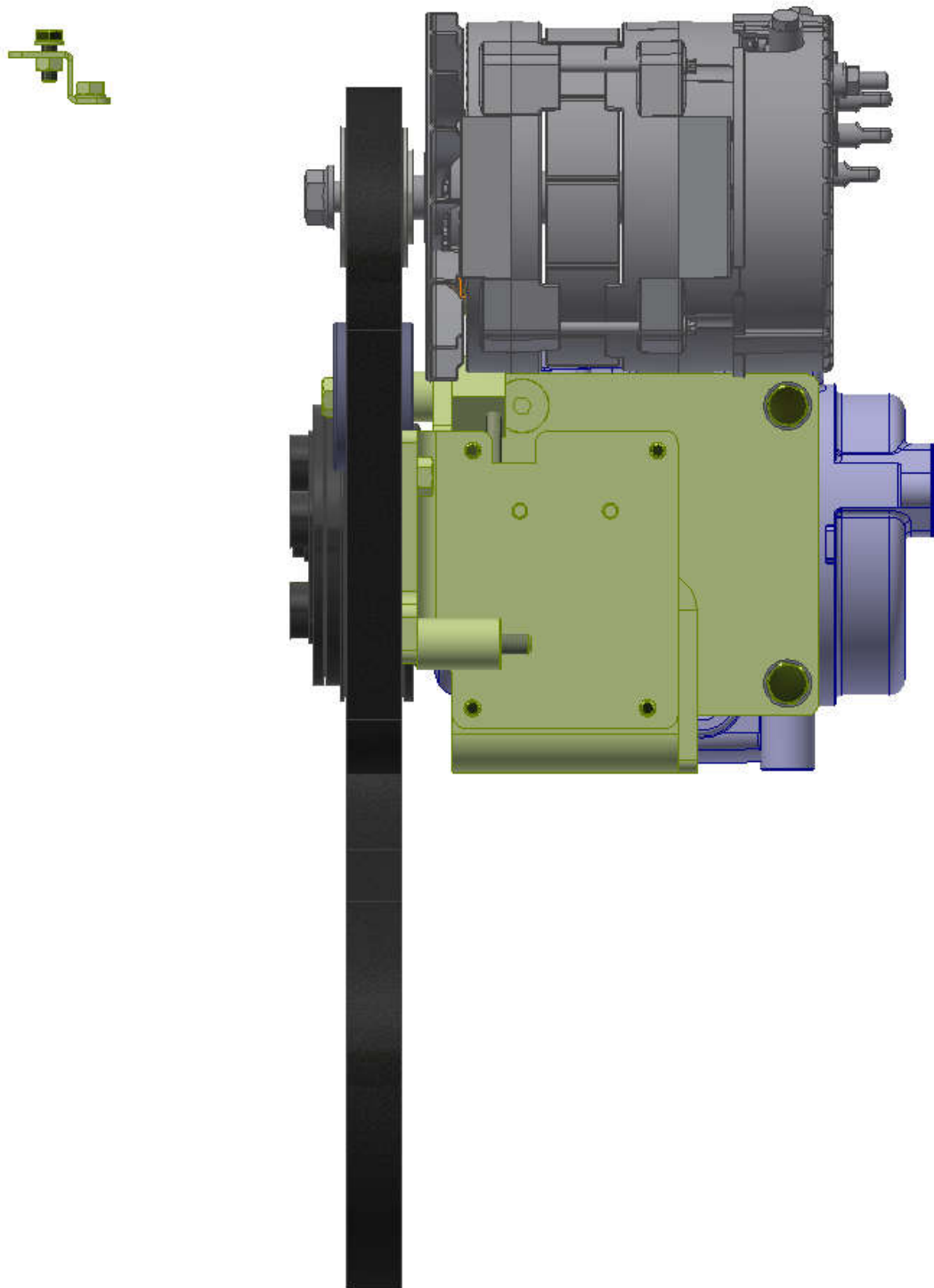
BILL OF MATERIALS		DWG NO		REV	
DRAWING UNIT OF MEASURE	MM (INCH)	KMPB2730	0	SHEET 1 OF 1	

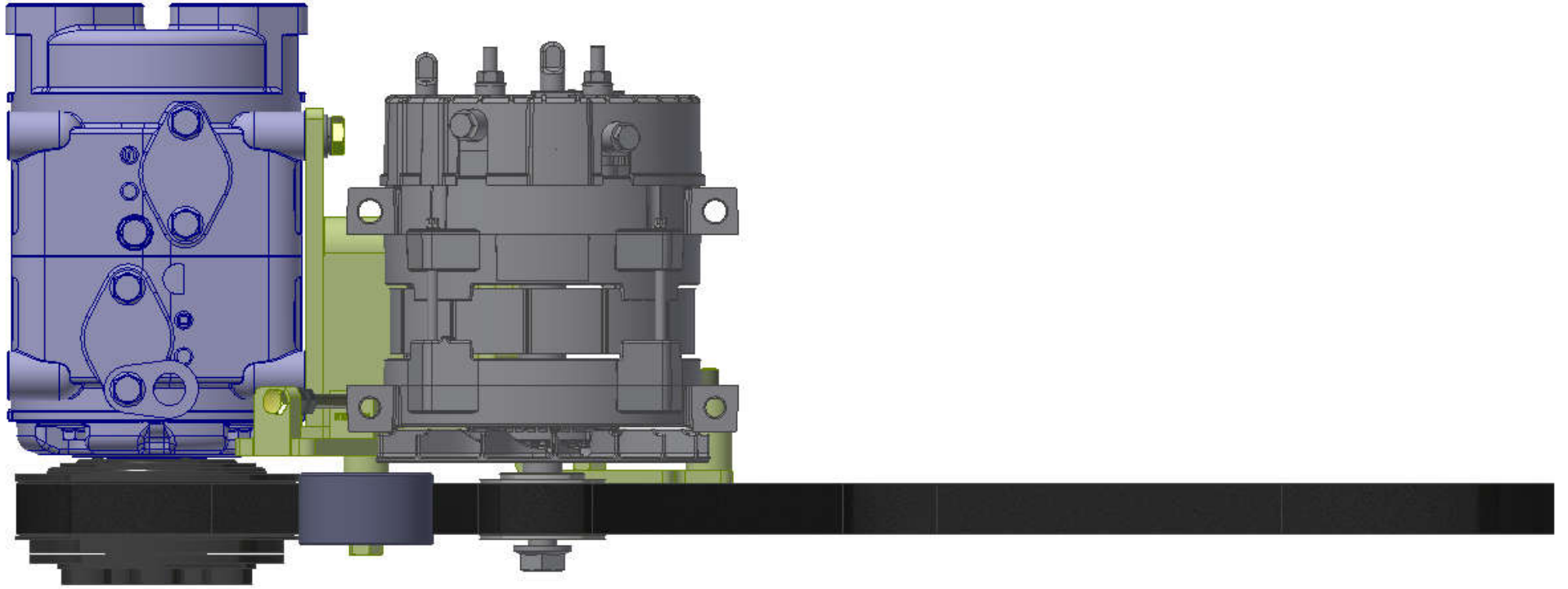


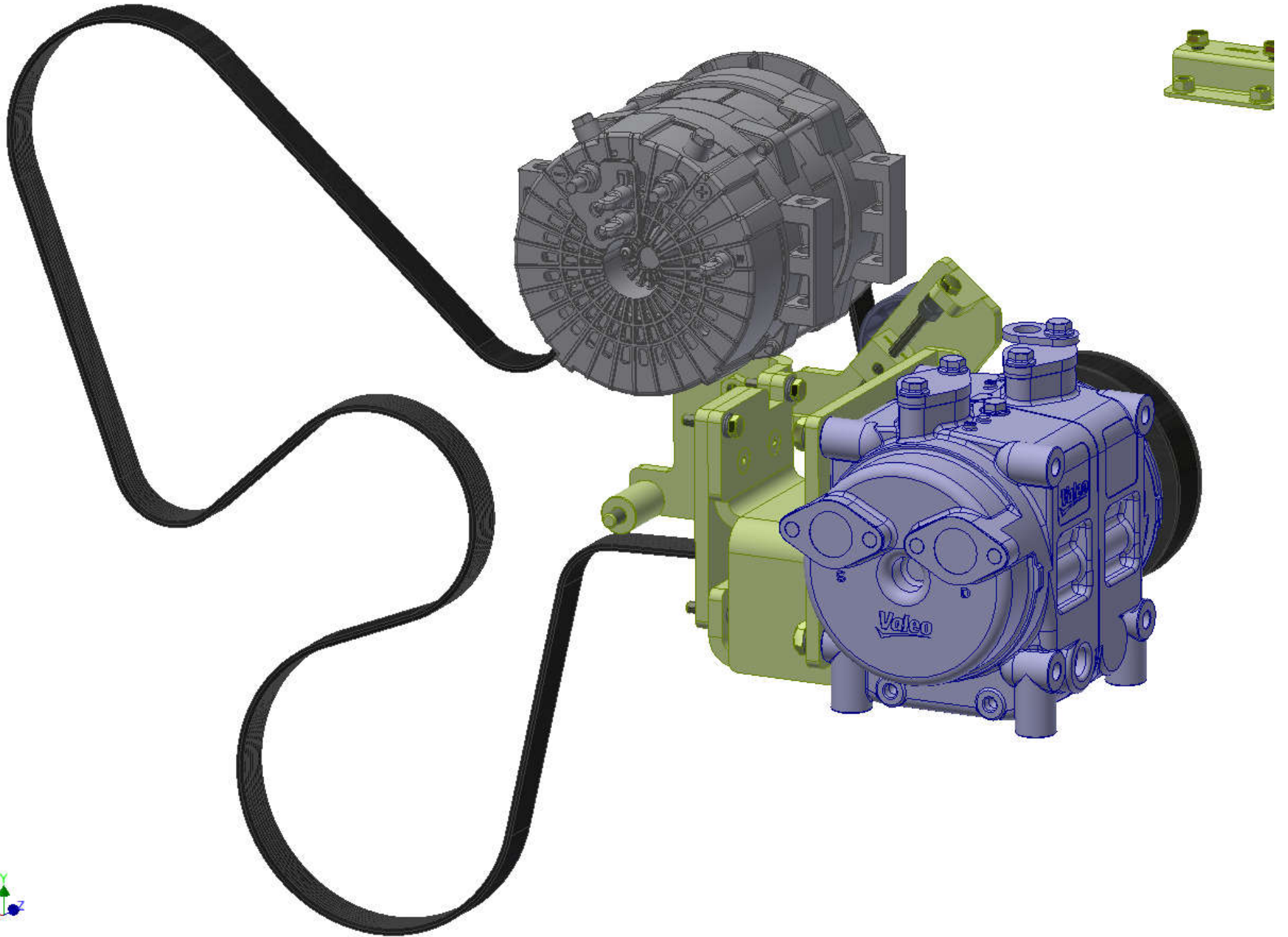
8 7 6 5 4 3 2 1











TransArctic A/C Compressor Mount Installation Disclaimer

All compressor mounts should be installed by qualified and trained personnel using proper tools and equipment in safe working conditions following industry standard guidelines for motor vehicle service and repair.

The installer of any compressor mount purchased from TransArctic must undertake all responsibility of issues arising from that compressor bracket being installed on any vehicle. As well as insure that a **proper and sufficient ground** is established between the compressors' clutches and the vehicle's engine. Mount functionality, operation and durability can all be compromised by an incompetent installation.

Due to the many different situations, parameters and application criteria, which are beyond the compressor mount manufacturer's control, TransArctic does not warrant design, durability, or operational functionality of any compressor mount improperly installed by another party.

With no implied guarantees it is the mount installer's strict responsibility to determine safety and functionality, of the compressor mount, at the time of installation.

Please contact TransArctic with any issue arising from installation so we may better improve the product. If you have any reservations about the compressor mount integrity contact TransArctic immediately at 1-877-COLD-AIR.

Mark OEM tensioner location

Install Kit

Check for Interferences

Check to ensure that the proper OEM tensioner orientation is maintained

Run engine with A/C system engaged for at least 10 minutes to run in belt

Check OEM tensioner orientation and adjust as required

Responsabilidad limitada de TransArctic en la instalación del soporte del compresor

Todos los soportes de los compresores deben ser instalados por personas calificadas y entrenadas, usando para ello los equipos y herramientas necesarios para esta labor en buenas condiciones y según las normas y guías para el servicio y/o reparación de motores de vehículos.

El instalador de los soportes comprados en TransArctic asume toda la responsabilidad de cualquier problema que surja en el soporte del compresor al vehículo; de igual manera es responsable que el cable a tierra sea conectado entre el embrague del compresor y el motor del vehículo.

Se advierte que el buen funcionamiento y la durabilidad del soporte pueden ser comprometidos por defectos en su instalación.

Debido a las diversas situaciones que se puedan presentar fuera del control del fabricante, TransArctic no garantiza el diseño, la durabilidad o el correcto funcionamiento de cualquier equipo inapropiadamente instalado por terceros.

Esta sobreentendido que el Instalador del montaje del compresor es estrictamente responsable de la seguridad y funcionamiento del equipo en el momento de la instalación.

Si tuviera algún problema o duda acerca de la instalación del soporte del compresor pongase en contacto inmediatamente con TransArctic al teléfono 1-877-COLD-AIR de modo que podamos mejorar nuestro producto.

Note la ubicación del medidor de tensión OEM

Instale el equipo

Controlar si hay interferencias.

Asegurese que el medidor de tensión mantenga la orientación justa.

Encienda el motor por lo menos 10 minutos con el sistema A/C enganchado para que la correa corra

Controle la orientación justa del medidor de tensión y ajuste a las condiciones requeridas del fabricante