

Bill of Materials Listing

TransArctic Canada Inc.

7/24/2008
Page 1 of 1

Product Number		Description	Bin	Date	Weight	Uof M	Yield
Line	Component Prod#	Description		Unit	Qty		
KMC64190		Mt Kit, ISB, HDX ER, O5G, 2B, 11" Cr,'07		11/6/2007	55.74		0
5	BEL32744	Belt, Banded B, 2743mm (108") (RBX105-2)		each	1		
10	BMK70044	Bkt, Angle, Vert, Weldmt, HDX, C7		each	1		
20	BMK70049	Bkt, Angle, HOR, HDX, C7		each	1		
30	PUL67122	Pulley, Crank, ADD-ON, ISB,6.7L,11",2B/X		each	1		
40	PUA05000	Pulley, Assy, Idler, B/S, 5", ALUM, Pit		each	1		
50	PUA05002	Pulley, Assy, Idler, AB gr, 5", ALUM,Pit		each	1		
60	PUL80074	Pulley, Idler, B/S, Wide, 76d (89102)		each	1		
70	TEN00003	Tenr, Spring, Un-Direct, 90d, 1/2 x 4.5"		each	1		
80	SLV17012	Sleeve, Pulley, 16.9o x 22.23mm x 12.32i		each	3		
90	SCD12912	Spacer, Col, Drl,12.9 mm x 31.8o x 12.3i		each	1		
100	SCD42512	Spacer, Col, Drl,42.5mm x 34.9o x 12.3i		each	1		
110	SCD46012	Spacer, Col, Drl,46mm x 34.9o x 12.3i		each	1		
120	KBC64192	Bag Kit, Fasteners, KMC64192/90		each	1		

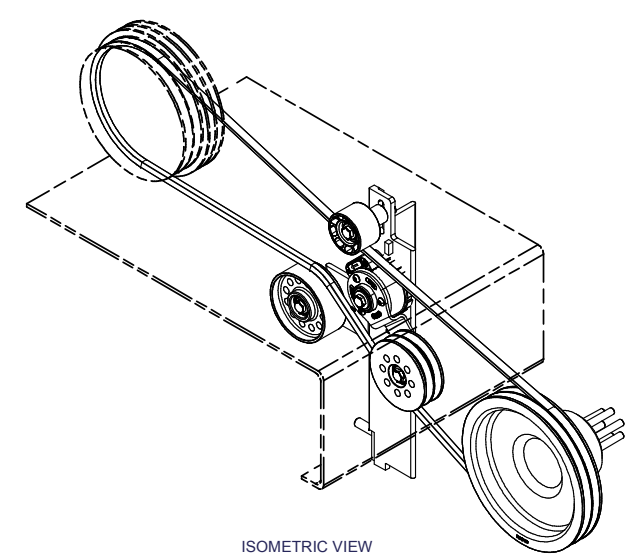
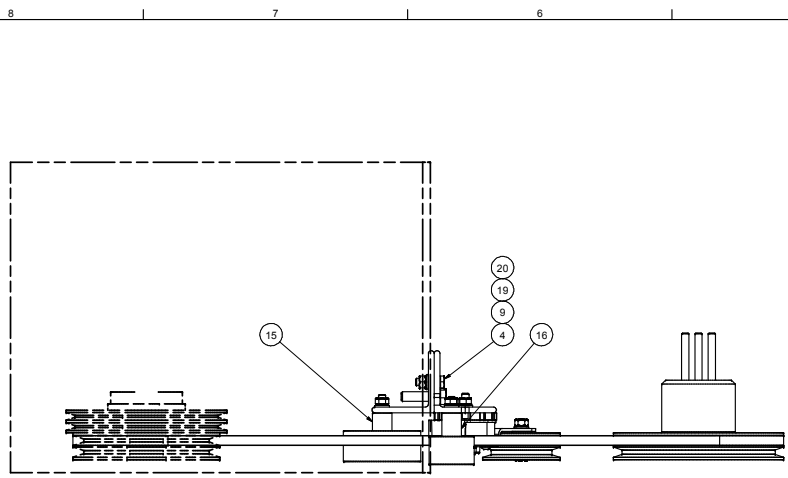
Bill of Materials Listing

TransArctic Canada Inc.

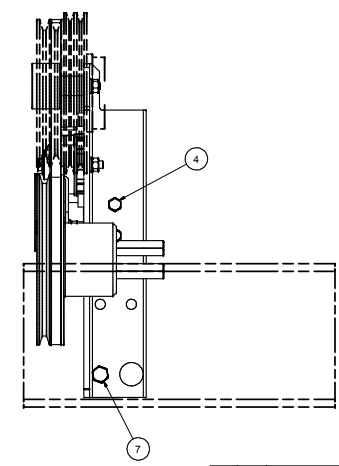
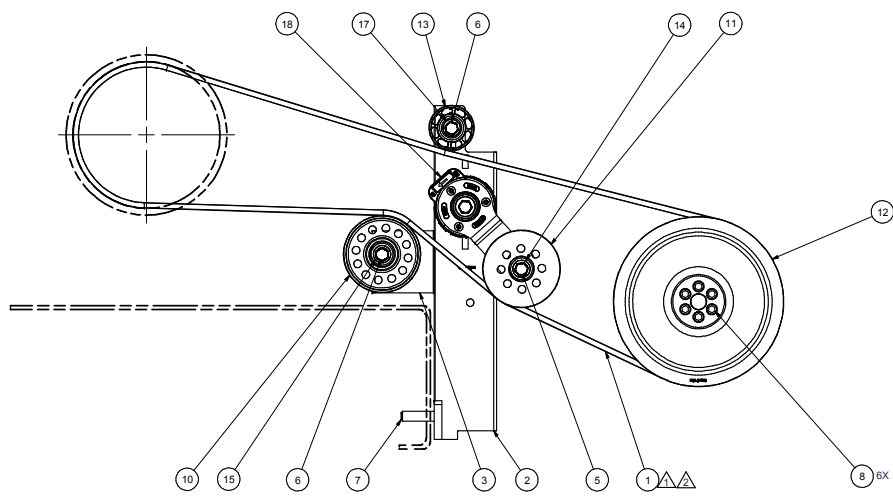
1/12/2008

Page 1 of 1

Product Number		Description	Bin	Date	Weight	Uof M	Yield
Line	Component Prod#	Description		Unit	Qty		
KBC64192		Bag Kit, Fasteners, KMC64192/90		05/12/05	2.71		0
10	BTC12060	Bolt, Hex, 12 x 1.75 x 60mm, 10.9, Plt		each	1		
20	BTC12100	Bolt, Hex, 12 x 1.75 x 100mm, 10.9, Plt		each	3		
30	BTC12040	Bolt, Hex, 12 x 1.75 x 40mm, 10.9, Plt		each	2		
35	CSS12090	Capscrew, SH, 12 x 1.25 x 90mm, 12.9,BLK		each	6		
40	BTQ10250	Bolt, Hex, 5/8-11unc, 2.5", 8. PLT		each	1		
50	NTA12000	Nut, Hex, 12 x 1.75, 8.8, Plt		each	6		
60	WFA12000	Washer, Flat, 12mm, 8.8, Plt		each	6		
70	WLA12000	Washer, Lock, 12mm, 8.8, Plt		each	6		



ISOMETRIC VIEW



NOTES:
 1) USE SERVICABLE THREADLOCKER ON ALL FASTENERS TO ENGINE COMPONENTS AND TORQUE ALL BOLTS TO S.A.E. SPECIFICATIONS.
 2) SEE "TRANSARGTIC A/C COMPRESSOR MOUNT INSTALLATION DISCLAIMER".

ITEM	QTY	U/M	PART NUMBER	DESCRIPTION
20	6	EACH	WLA12000	WASHER, LOCK, 12mm, 8.8, PLT
19	6	EACH	WFA12000	WASHER, FLAT, 12mm, 8.8, PLT
18	1	EACH	TEN00003	TENR. SPRING, UN-DIRECT, 90d, 1/2 x 4.5"
17	3	EACH	SLV17012	SLEEVE, PULLEY, 16.9d x 22.23 mm x 12.19h
16	1	EACH	SCD46012	SPACER, COL, DRL, 46mm x 31.8d x 12.0l
15	1	EACH	SCD42512	SPACER, COL, DRL, 42.5mm x 31.8d x 12.0l
14	1	EACH	SCD12912	SPACER, COL, DRL, 12.9mm x 31.8d x 12.0l
13	1	EACH	PUL80074	PULLEY, IDLER, BACKSIDE, P8, 74D, 46.27W
12	1	EACH	PUL67122	PULLEY, CRANK, ADD-ON, ISB, 6.7L, 11", 2B/X
11	1	EACH	PJA05002	PULLEY, ASSY, IDLER, AB, gr, 5" ALUM, PLT
10	1	EACH	PJA05000	PULLEY, ASSY, IDLER, B/S, 5", ALUM, PLT
9	6	EACH	NTA12000	NUT, HEX, 12 x 1.75, 8.8, PLT
8	6	EACH	CSS12090	CAPSCREW, SH, 12 x 1.25 x 90mm, 12.9, PLT
7	1	EACH	BTQ10250	BOLT, HEX, 5/8-11UNC, 2.50", 8, PLT
6	3	EACH	BTC12100	BOLT, HEX, 12 x 1.75 x 100mm, 10.9, PLT
5	1	EACH	BTC12060	BOLT, HEX, 12 x 1.75 x 60mm, 10.9, PLT
4	2	EACH	BTC12040	BOLT, HEX, 12 x 1.75 x 40mm, 10.9, PLT
3	1	EACH	BMK70049	BKT, ANGLE, HOR, HDX, C7
2	1	EACH	BMK70044	BKT, ANGLE, VERT, WELDMT, HDX, C7
1	1	EACH	BEL32744	BELT, BANDED B, 2743mm (108") (RBX105-2)

Bills of Material				
ITEM	QTY	U/M	DESCRIPTION	
2	1	CHANGED BELT	1/22/2008	
1	1	ADDED BEL32743 BELT	05/08/08	
0	1	RELEASED TO PRODUCTION	01/11/08	
REV	ECN	DESCRIPTION	DATE	BY
		WFG	01/11/08	James Stewart
		APPROVED	1/11/2008	Val Jakowlew
		APPROVED	1/11/2008	Dale Mason

THIS DRAWING CONTAINS PROPRIETARY CONFIDENTIAL INFORMATION OWNED BY TRANSARGTIC CANADA INC. THE DOCUMENT AND THE INFORMATION IN IT ARE NOT TO BE USED, DISCLOSED OR REPRODUCED WITHOUT EXPRESS WRITTEN PERMISSION OF THE COMPANY.

UNSPECIFIED TOLERANCES:
 ONE DECIMAL PLACE (10, 20, 30, 50)
 TWO DECIMAL PLACE (100, 150, 200, 300)
 FRACTIONS (1/32, 1/16, 1/8, 3/16, 1/4, 3/8, 1/2, 5/8, 3/4, 7/8)

THIRD ANGLE PROJECTION

TRANSARGTIC INC.

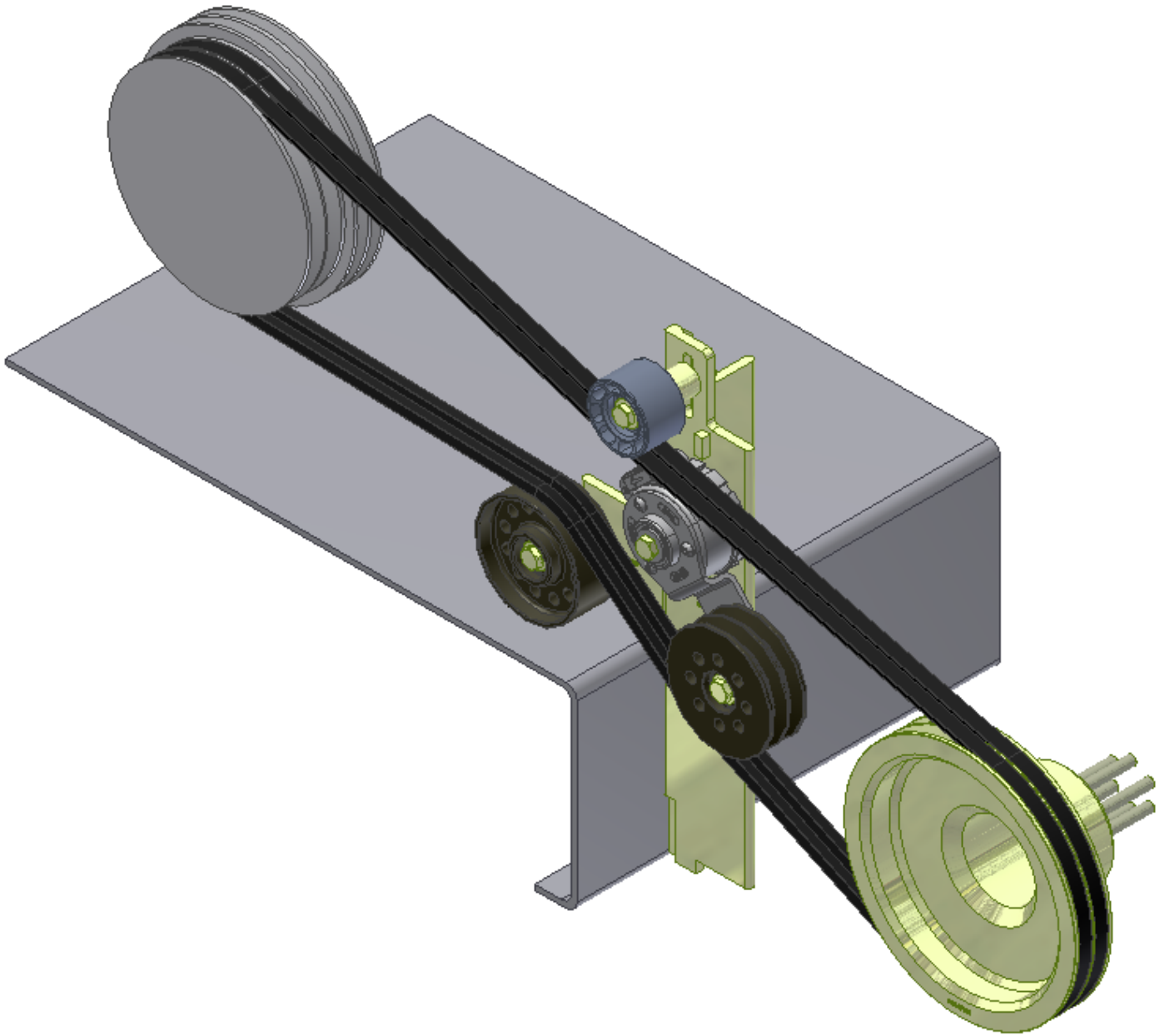
TITLE: MT KIT, ISB, HDX ER, O5G, 2B, 11" CRANK

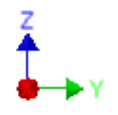
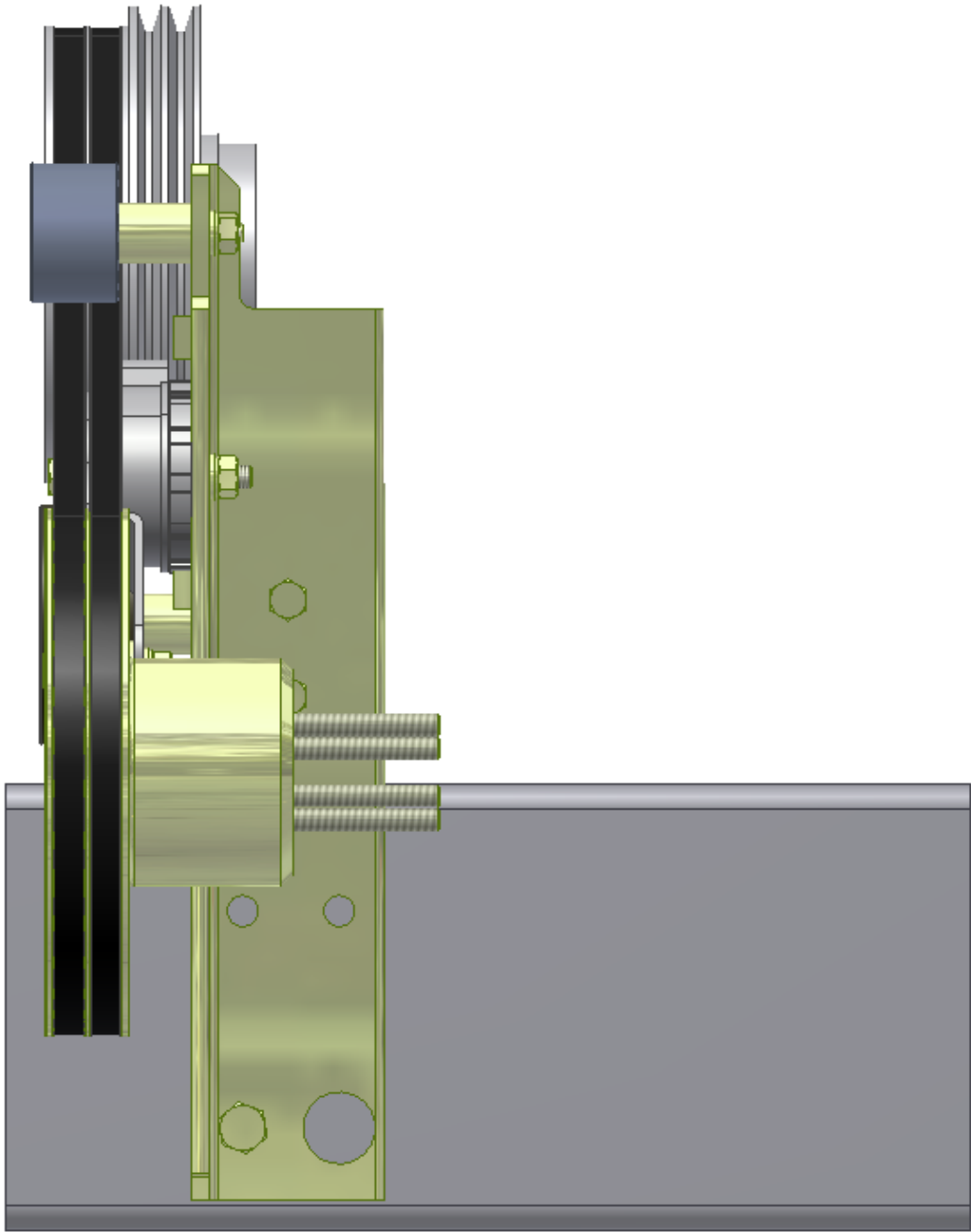
SIZE: DWG NO. KMC64190

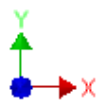
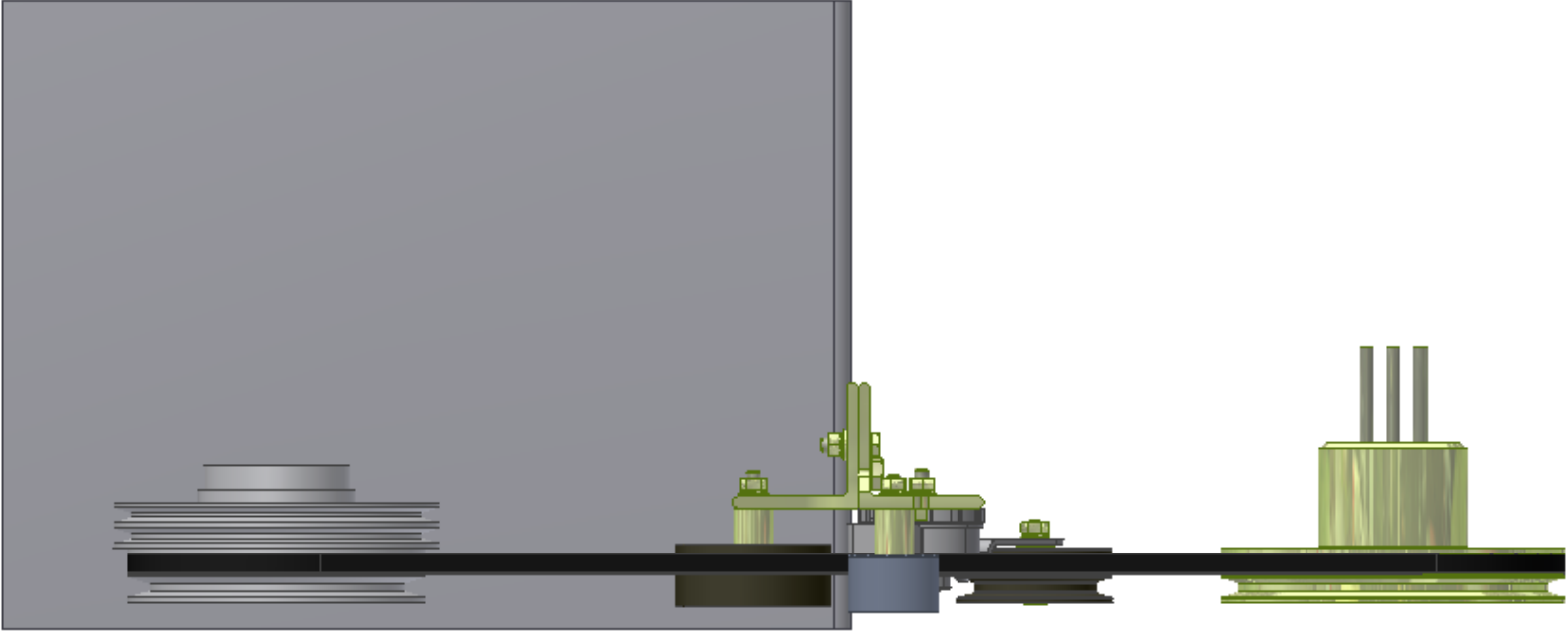
SCALE: 1:4

DRAWING UNIT OF MEASURE: MM (INCH)

SHEET 1 OF 1







TransArctic A/C Compressor Mount Installation Disclaimer

All compressor mounts should be installed by qualified and trained personnel using proper tools and equipment in safe working conditions following industry standard guidelines for motor vehicle service and repair.

The installer of any compressor mount purchased from TransArctic must undertake all responsibility of issues arising from that compressor bracket being installed on any vehicle. As well as insure that a **proper and sufficient ground** is established between the compressors' clutches and the vehicle's engine. Mount functionality, operation and durability can all be compromised by an incompetent installation.

Due to the many different situations, parameters and application criteria, which are beyond the compressor mount manufacturer's control, TransArctic does not warrant design, durability, or operational functionality of any compressor mount improperly installed by another party.

With no implied guarantees it is the mount installer's strict responsibility to determine safety and functionality, of the compressor mount, at the time of installation.

Please contact TransArctic with any issue arising from installation so we may better improve the product. If you have any reservations about the compressor mount integrity contact TransArctic immediately at 1-877-COLD-AIR.