

Bill of Materials Listing

TransArctic Canada Inc.

11/21/2007

Page 1 of 1

Product Number		Description	Bin	Date	Weight	Uof M	Yield
Line	Component Prod#	Description		Unit	Qty		
KMC62671		Mt Kit, ISB, 6.7L, TH C2, 2 TM-21, '07		07/26/06	14.99		0
10	BEL11176	Belt, A gr, 1176mm (46.3") (17463)		each	1		
20	BMC59033	Bkt, Main, Weldmt, ISB, A3FE		each	1		
30	BMC59035	Bkt, Cradle, BTM, 87mm, ISB, A3FE		each	1		
40	BMC59037	Bkt, Spacer, Bar, ISB, A3FE		each	1		
50	PUL10094	Pulley, Idler, SA,94d x 18w,Blk (IP-103)		each	1		
55	PUL67002	Pulley, Fan, ADD-ON, Cummins, ISB,6.7,SA		each	1		
60	SCD12717	Spacer, Col, Drl, 12.7mm x 25.4o x 17i		each	1		
70	SLV17010	Sleeve, Pulley, 16.9o x 22.23mm x 10.32i		each	1		
80	TEN00002	Tenr, Spring, Un-Direct, 90d, 3/8 x 4.5"/3.5"		each	1		
90	KBC52652	Bag Kit, Fasteners, KMC5xx52/6xx71		each	1		

Bill of Materials Listing

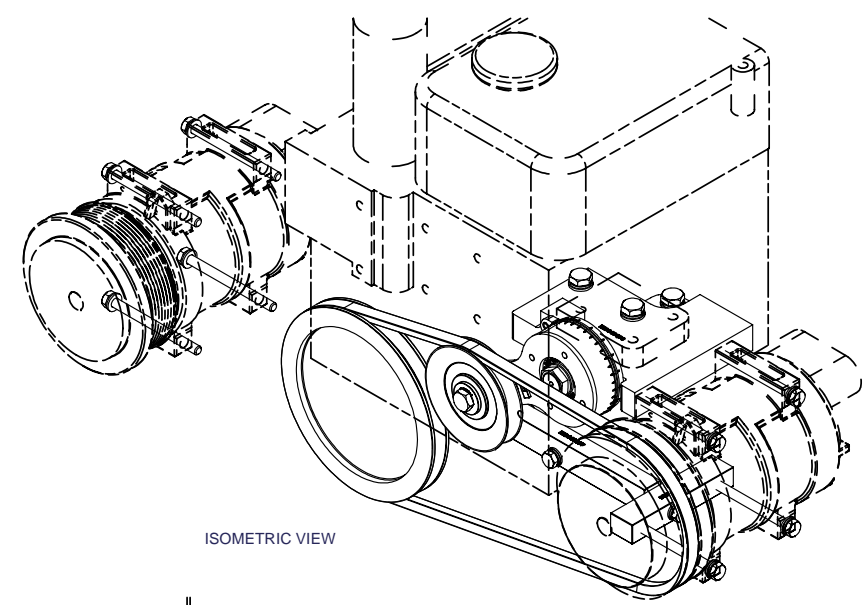
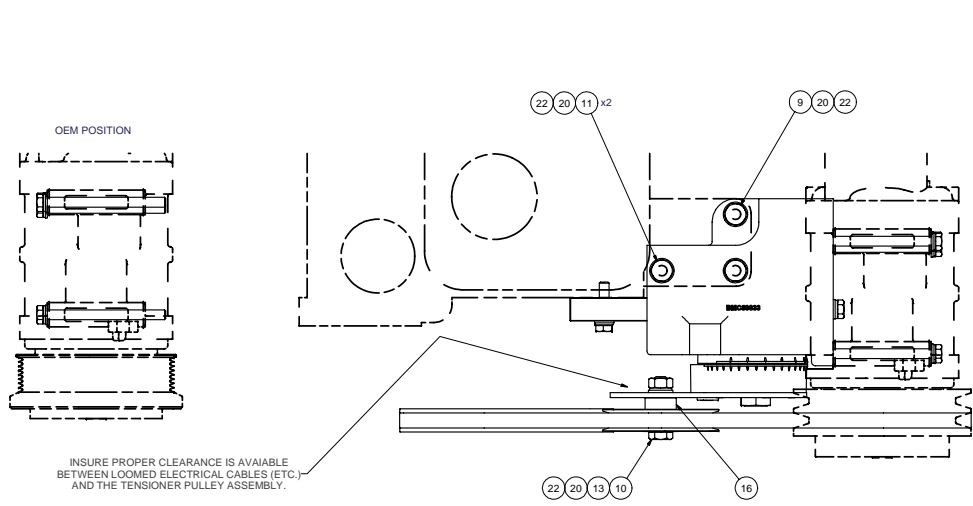
TransArctic Canada Inc.

11/21/2007

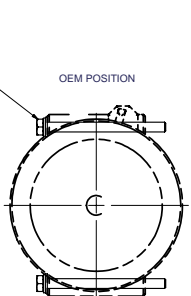
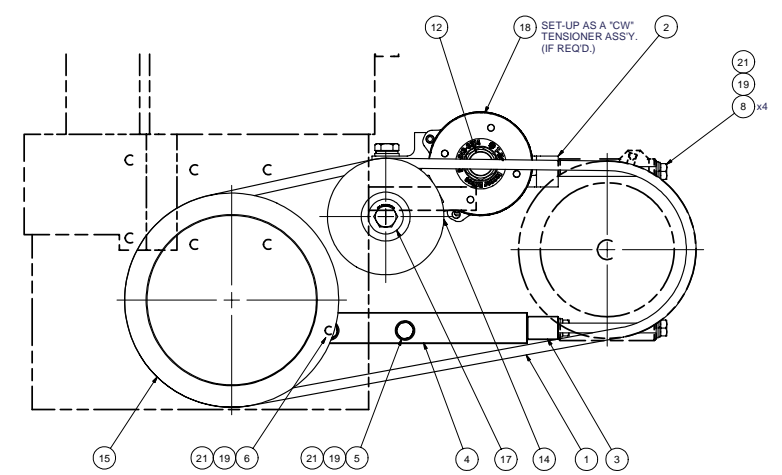
Page 1 of 1

Product Number		Description	Bin	Date	Weight	Uof M	Yield
Line	Component Prod#	Description		Unit	Qty		
KBC52652		Bag Kit, Fasteners, KMC5xx52/6xx71		07/26/06	1.34		0
10	BTC10050	Bolt, Hex, 10 x 1.5 x 50mm, 10.9, Plt		each	2		
20	BTC10045	Bolt, Hex, 10 x 1.5 x 45mm, 10.9, Plt		each	1		
25	BTC10040	Bolt, Hex, 10 x 1.5 x 40mm, 10.9, Plt		each	1		
30	BTC08100	Bolt, Hex, 8 x 1.25 x 100mm, 10.9, Plt		each	8		
40	BTC08040	Bolt, Hex, 8 x 1.25 x 40mm, 10.9, Plt		each	1		
50	BTC08035	Bolt, Hex, 8 x 1.25 x 35mm, 10.9, Plt		each	1		
60	BTC08015	Bolt, Hex, 8 x 1.25 x 15mm, 10.9, Plt		each	1		
70	CSF06250	Capscrew, FH, 3/8-16 x 2.5", 9, Plt		each	1		
80	NTA10000	Nut, Hex, 10 x 1.5, 8.8, Plt		each	1		
90	WFA08000	Washer, Flat, 8mm, 8.8, Plt		each	11		
100	WFA10000	Washer, Flat, 10mm, 8.8, Plt		each	4		
110	WLA08000	Washer, Lock, 8mm, 8.8, Plt		each	11		
120	WLA10000	Washer, Lock, 10mm, 8.8, Plt		each	4		

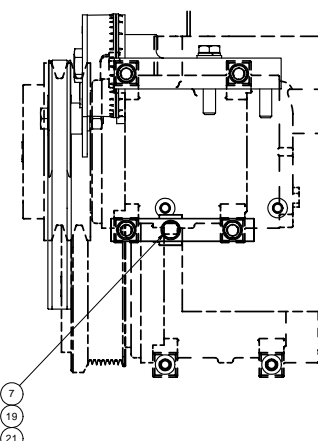
8 7 6 5 4 3 2 1



ISOMETRIC VIEW



OEM POSITION



NOTES:
 1) USE SERVICABLE THREADLOCKER ON ALL FASTENERS TO ENGINE COMPONENTS AND TORQUE ALL BOLTS TO S.A.E. SPECIFICATIONS.
 2) SEE "TRANSARGTIC A/C COMPRESSOR MOUNT INSTALLATION DISCLAIMER".

ITEM	QTY	U/M	PART NUMBER	DESCRIPTION
22	4	EACH	WLA10000	WASHER, LOCK, 10mm, 8.8, PLT
21	11	EACH	WLA08000	WASHER, LOCK, 8mm, 8.8, PLT
20	4	EACH	WFA10000	WASHER, FLAT, 10mm, 8.8, PLT
19	11	EACH	WFA08000	WASHER, FLAT, 8mm, 8.8, PLT
18	1	EACH	TEN00002	TENR, SPRINGS, UN-DIRECT, 30D, 3/8" X 3.5"
17	1	EACH	SLV17010	SLEVE, PULLEY, 16.90 x 22.23mm x 10.32
16	1	EACH	SCD12717	SPACER, COL, DRL, 12.7mm x 25.40 x 171
15	1	EACH	PUL67002	PULLEY, FAN, OEM, A, 175d x 19w
14	1	EACH	PUL10094	PULLEY, IDLER, SA.94D X 18W, BLK (IP-103)
13	1	EACH	NTA10000	NUT, HEX, 10 x 1.5, 8.8, PLT
12	1	EACH	CSF06250	CAPSCREW, FH, 3/8-16 x 2.5", 9, PLT
11	2	EACH	BTC10050	BOLT, HEX, 10 x 1.5 x 50mm, 10.9, PLT
10	1	EACH	BTC10045	BOLT, HEX, 10 x 1.5 x 40mm, 10.9, PLT
9	1	EACH	BTC10040	BOLT, HEX, 10 x 1.5 x 40mm, 10.9, PLT
8	8	EACH	BTC08100	BOLT, HEX, 8 x 1.25 x 100mm, 10.9, PLT
7	1	EACH	BTC08040	BOLT, HEX, 8 x 1.25 x 40mm, 10.9, PLT
6	1	EACH	BTC08035	BOLT, HEX, 8 x 1.25 x 35mm, 10.9, PLT
5	1	EACH	BTC08015	BOLT, HEX, 8 x 1.25 x 15mm, 10.9, PLT
4	1	EACH	BMC59037	BKT, SPACER, BAR, ISB, A3FE
3	1	EACH	BMC59035	BKT, CRADLE, BTM, 87mm, ISB, A3FE
2	1	EACH	BMC59033	BKT, MAIN, WELDMT, ISB, A3FE
1	1	EACH	BEL11776	BELT, A gr, 1176mm (46.3")

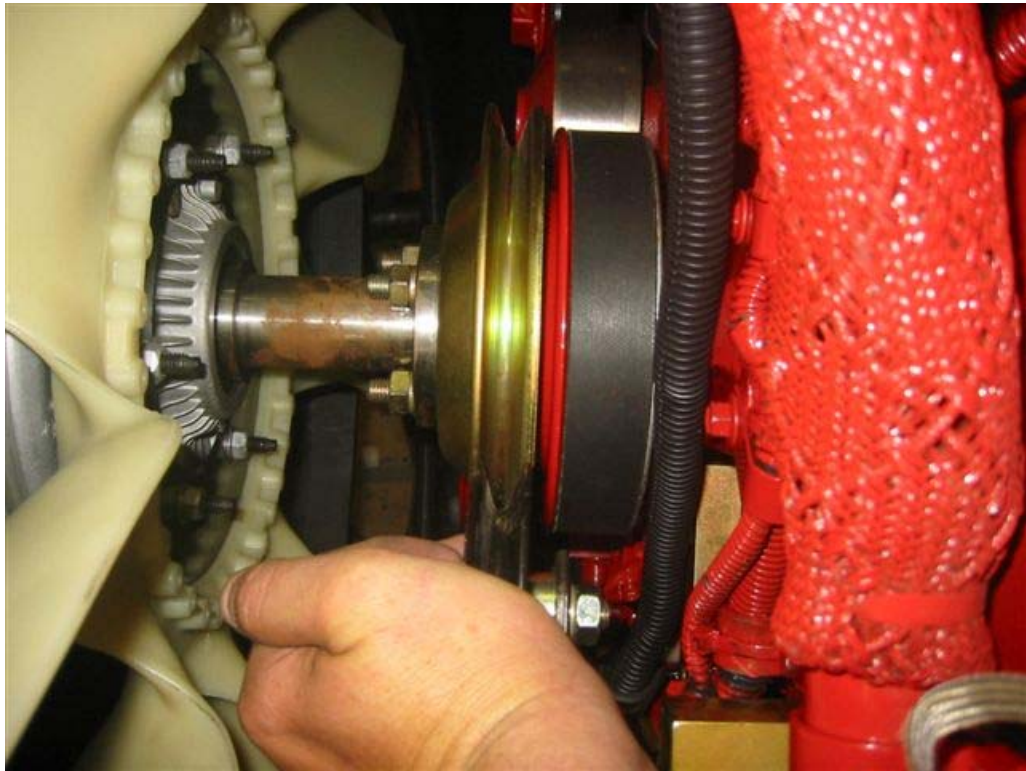
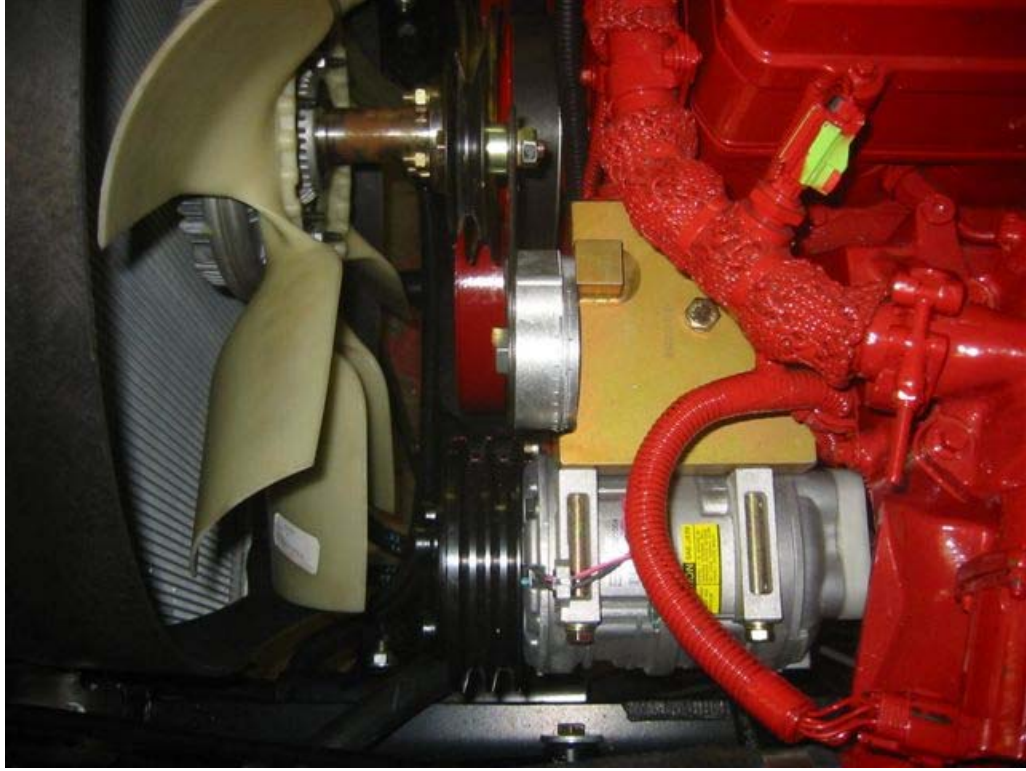
TRANSARGTIC INC.

UNSPECIFIED TOLERANCES:	ALL DIMS
ONE DECIMAL PLACE (X.1)	30 (FRA)
TWO DECIMAL PLACE (X.00)	25 (FRA)
THREE DECIMAL PLACE (X.000)	12 (FRA)
FRACTIONAL (1/16")	16 (FRA)
ANGULAR (1/2°)	10 (FRA)

DRAWN	vjakovlev	8/14/2007		
CHECKED	James Stewart	8/14/2007		
RELEASED TO PRODUCTION	8/14/2007	BRAR		
REV	ECN	DESCRIPTION	DATE	BY
			8/14/2007	James Stewart
			8/14/2007	Ron Ingram
			8/14/2007	Dale Mason

TITLE	MT KIT, ISB, 6.7L, TH C2, 2M-TM-21, '07
SIZE	D
DWG NO	KMC62671
REV	0
SCALE	1:2
SHEET	1 OF 1

8 7 6 5 4 3 2 1





TransArctic A/C Compressor Mount Installation Disclaimer

All compressor mounts should be installed by qualified and trained personnel using proper tools and equipment in safe working conditions following industry standard guidelines for motor vehicle service and repair.

The installer of any compressor mount purchased from TransArctic must undertake all responsibility of issues arising from that compressor bracket being installed on any vehicle. As well as insure that a **proper and sufficient ground** is established between the compressors' clutches and the vehicle's engine. Mount functionality, operation and durability can all be compromised by an incompetent installation.

Due to the many different situations, parameters and application criteria, which are beyond the compressor mount manufacturer's control, TransArctic does not warrant design, durability, or operational functionality of any compressor mount improperly installed by another party.

With no implied guarantees it is the mount installer's strict responsibility to determine safety and functionality, of the compressor mount, at the time of installation.

Please contact TransArctic with any issue arising from installation so we may better improve the product. If you have any reservations about the compressor mount integrity contact TransArctic immediately at 1-877-COLD-AIR.