

Bill of Materials Listing

TransArctic Canada Inc.

12/9/2022
Page 1 of 1

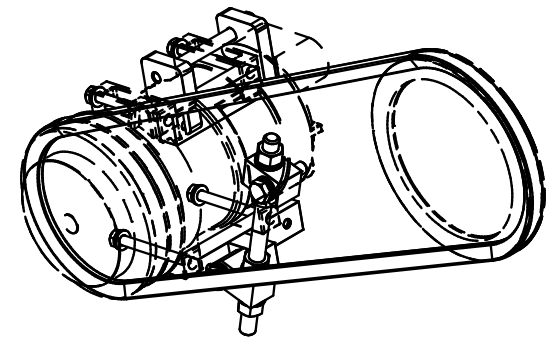
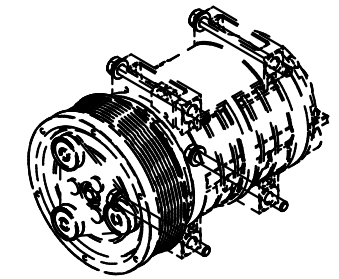
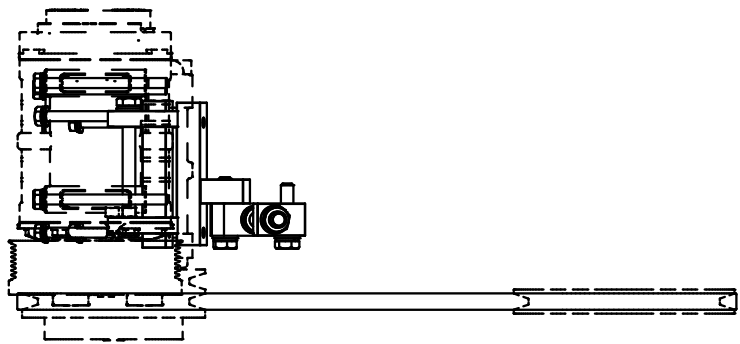
Product Number		Date		Description		Uof M	Weight	Yield	
Line	Qty	Component	Prod#	Rev#	Description	Location	Unit		
KMC62681			11/03/22	0	Mt Kit, ISB, 6.7L, MVP EF,2 TM-21, '22			4.86	0
5	1	BEL11448			Belt, A gr, 1448mm (57") (17570)		each		
10	1	BMC67217		0	BKT, BLOCK, TBB, EF		Each		
20	1	BMC67218		1	BKT, ANGLE, BLOCK, WELDMT, TBB, EF		Each		
30	1	BMC67219		1	BKT, YOKE, BLOCK, WELDMT, TBB, EF		Each		
40	1	BMT10013		0	Bkt, Tenr, Block, Drilled		Each		
50	1	TRD08080			Threaded, Rod, 1/2-13unc x 8", 5, Plt		Each		
60	1	KBC62681		0	Bag Kit, Fasteners, KMC62681		Each		

Bill of Materials Listing

12/9/2022
Page 1 of 1

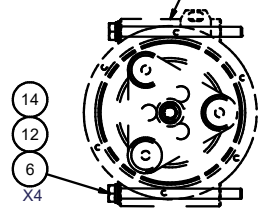
TransArctic Canada Inc.

Product Number		Date		Description		Uof M	Weight	Yield	
Line	Qty	Component	Prod#	Rev#	Description	Location	Unit		
KBC62681			11/03/22	0	Bag Kit, Fasteners, KMC62681			1.40	0
10	1	BTC10100			Bolt, Hex, 10 x 1.5 x 100mm, 10.9,Plt,FT		each		
20	1	BTC10050			Bolt, Hex, 10 x 1.5 x 50mm, 10.9, Plt		each		
30	1	BTC10045			Bolt, Hex, 10 x 1.5 x 45mm, 10.9, Plt,FT		each		
40	8	BTC08100			Bolt, Hex, 8 x 1.25 x 100mm, 10.9, Plt		each		
50	4	NTQ08000			Nut, Hex, 1/2-13unc, 8, Plt		each		
60	8	WFA08000			Washer, Flat, 8mm, 8.8, Plt		each		
70	3	WFA10000			Washer, Flat, 10mm, 8.8, Plt		each		
80	4	WLQ08000			Washer, Lock, 1/2", 8, Plt		each		
90	3	WLC10000			Washer, Lock, 10mm, 10.9, Plt		each		
100	8	WLA08000			Washer, Lock, 8mm, 8.8, Plt		each		

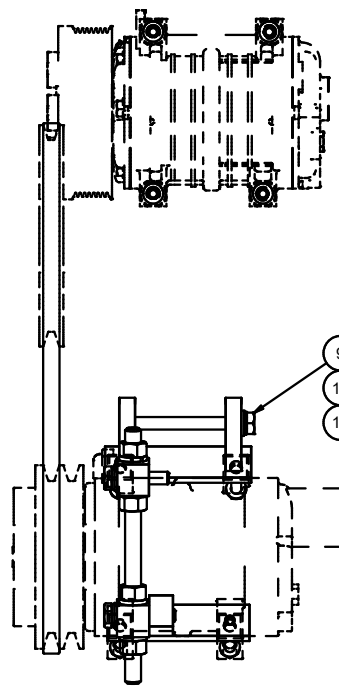
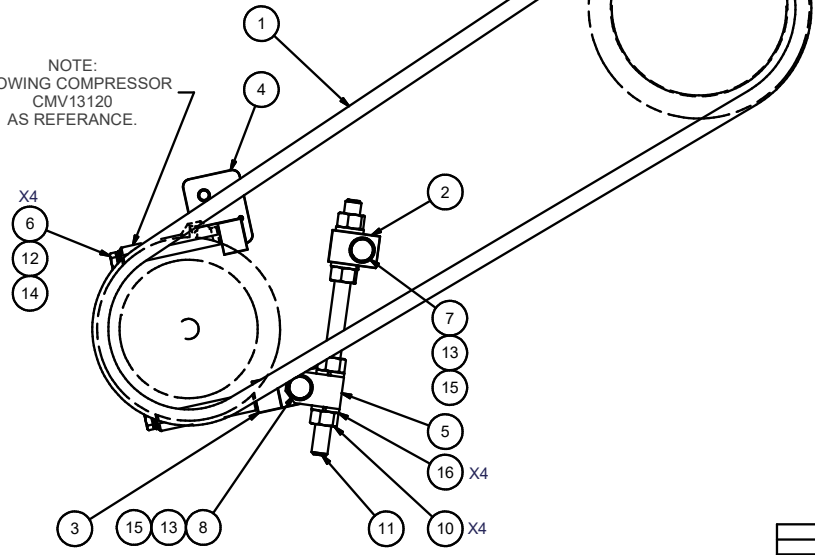


ISOMETRIC VIEW

NOTE:
SHOWING COMPRESSOR
CMV13080
AS REFERENCE.



NOTE:
SHOWING COMPRESSOR
CMV13120
AS REFERENCE.



NOTES:

- 1) USE SERVICABLE THREADLOCKER ON ALL FASTENERS TO ENGINE COMPONENTS AND TORQUE **ALL** BOLTS TO S.A.E. SPECIFICATIONS.
- 2) SEE "TRANSARCTIC A/C COMPRESSOR MOUNT INSTALLATION DISCLAIMER".

ITEM	QTY	U/M	PART NUMBER	DESCRIPTION
16	4	EACH	WLQ08000	WASHER, LOCK, 1/2", 8, PLT
15	3	EACH	WLA10000	WASHER, LOCK, 10mm, 8.8, PLT
14	8	EACH	WLA08000	WASHER, LOCK, 8mm, 8.8, PLT
13	3	EACH	WFA10000	WASHER, FLAT, 10mm, 8.8, PLT
12	8	EACH	WFA08000	WASHER, FLAT, 8mm, 8.8, PLT
11	1	EACH	TRD08080	THREADED, ROD, 1/2-13UNC x 8", 5 PLT
10	4	EACH	NTQ08000	NUT, HEX, 1/2-13UNC, 8, PLT
9	1	EACH	BTC10100	BOLT, HEX, 10 x 1.5 x 100mm, 10.9, PLT
8	1	EACH	BTC10050	BOLT, HEX, 10 x 1.5 x 50mm, 10.9, PLT
7	1	EACH	BTC10045	BOLT, HEX, 10 x 1.5 x 45mm, 10.9, PLT
6	8	EACH	BTC08100	BOLT, HEX, 8 x 1.25 x 100mm, 10.9, PLT
5	1	EACH	BMT10013	BKT, TENR, BLOCK, DRILLED
4	1	EACH	BMC67219	BKT, YOKE, BLOCK, WELDMT, TBB, EF
3	1	EACH	BMC67218	BKT, ANGLE, BLOCK, WELDMT, TBB, EF
2	1	EACH	BMC67217	BKT, BLOCK, TBB, EF
1	1	EACH	BEL11448	BELT, A gr, 1448mm (57")

BILL OF MATERIALS

DRAWN	vjakowlew	12/08/22
CHECKED	Jose Rodriguez	12/08/22
QA		
MFG	James Stewart	12/08/22
APPROVED	Dale Mason	12/08/22



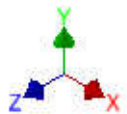
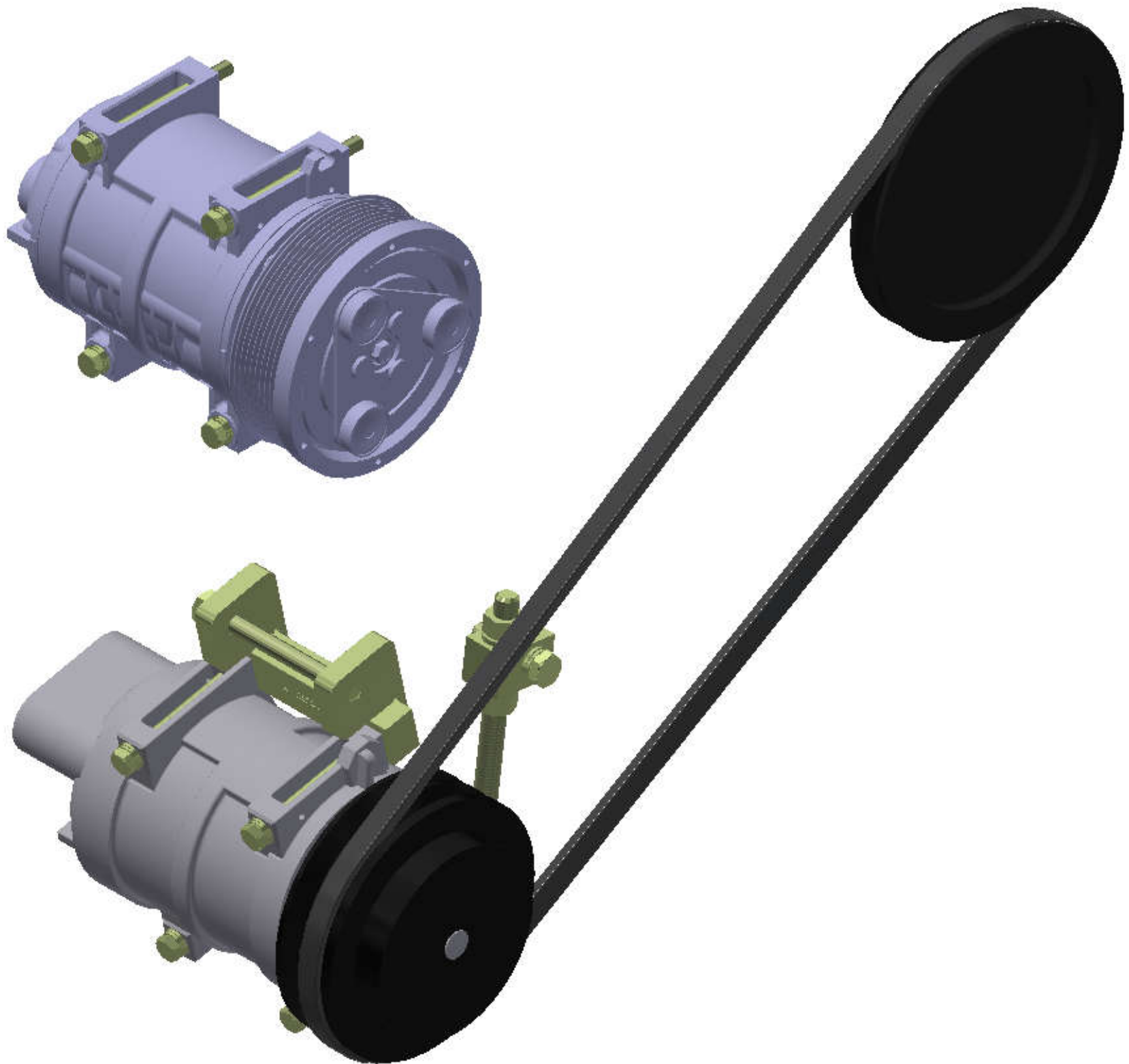
TITLE
MT KIT, ISB, 6.7L, MVP EF, 2 TM-21, '22

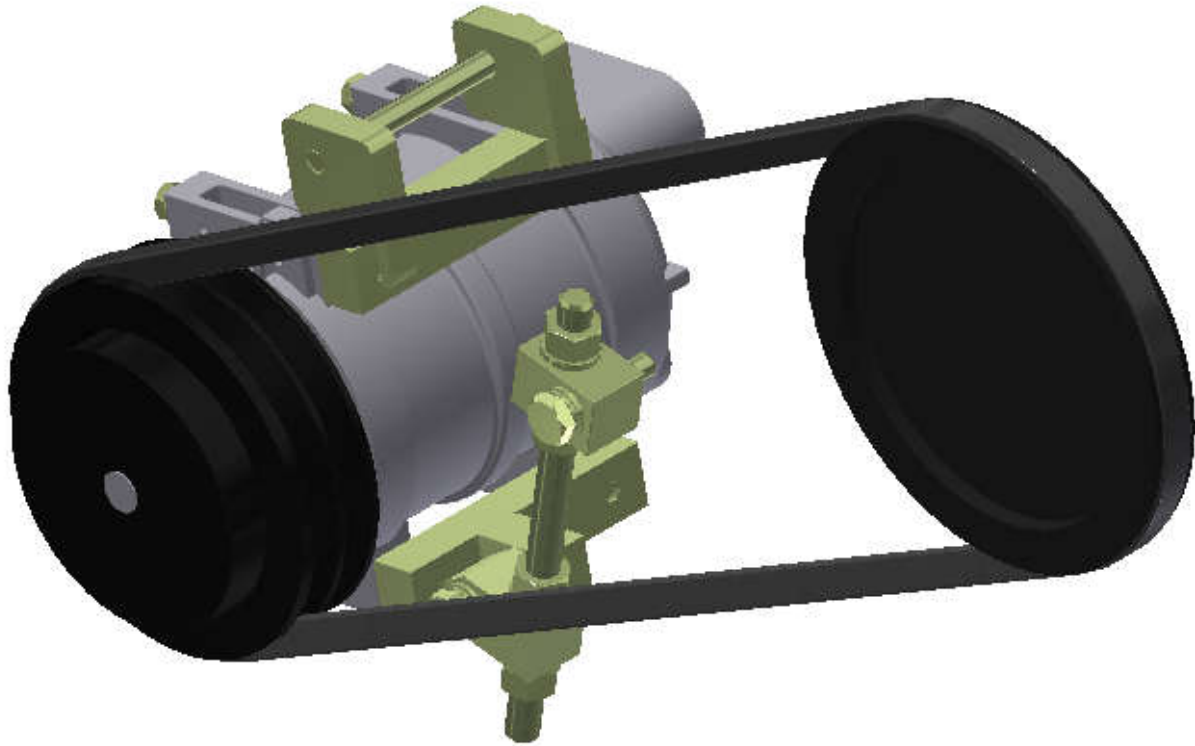
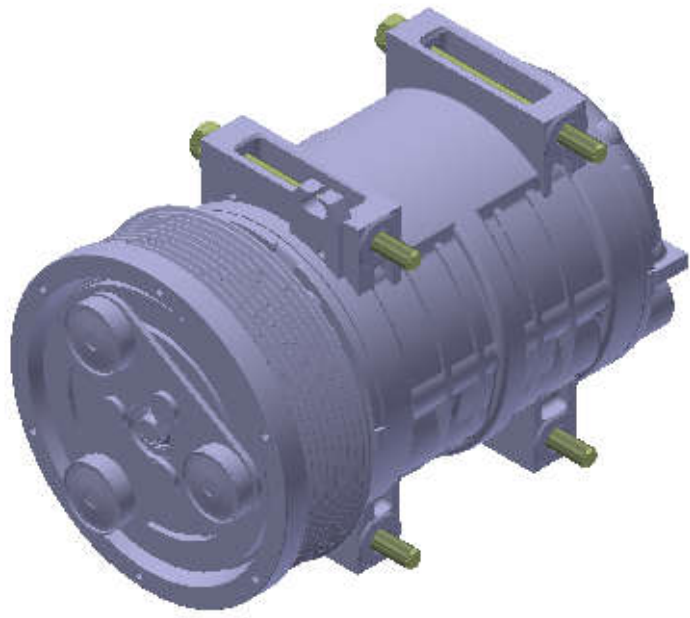
0	RELEASED TO PRODUCTION.	12/12/22	VALJ
REV:	ECN:	DESCRIPTION:	DATE:
THIS DRAWING CONTAINS PROPRIETARY CONFIDENTIAL INFORMATION OWNED BY TRANSARCTIC CANADA INC. THE DOCUMENT AND THE INFORMATION IN IT ARE NOT TO BE USED, DISCLOSED OR REPRODUCED WITHOUT EXPRESS WRITTEN PERMISSION OF THE COMPANY.			
UNSPECIFIED TOLERANCES:		MM (ALT. DIM. -INCH)	
ZERO DECIMAL PLACE (X)	±1.0	[040]	
ONE DECIMAL PLACE (.X)	±.50	[020]	
TWO DECIMAL PLACE (.XX)	±.25	[010]	
THREE DECIMAL PLACE (.XXX)	±.13	[005]	
FRACTIONAL (1/16")	ANGULAR (1/32")		

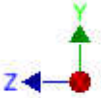
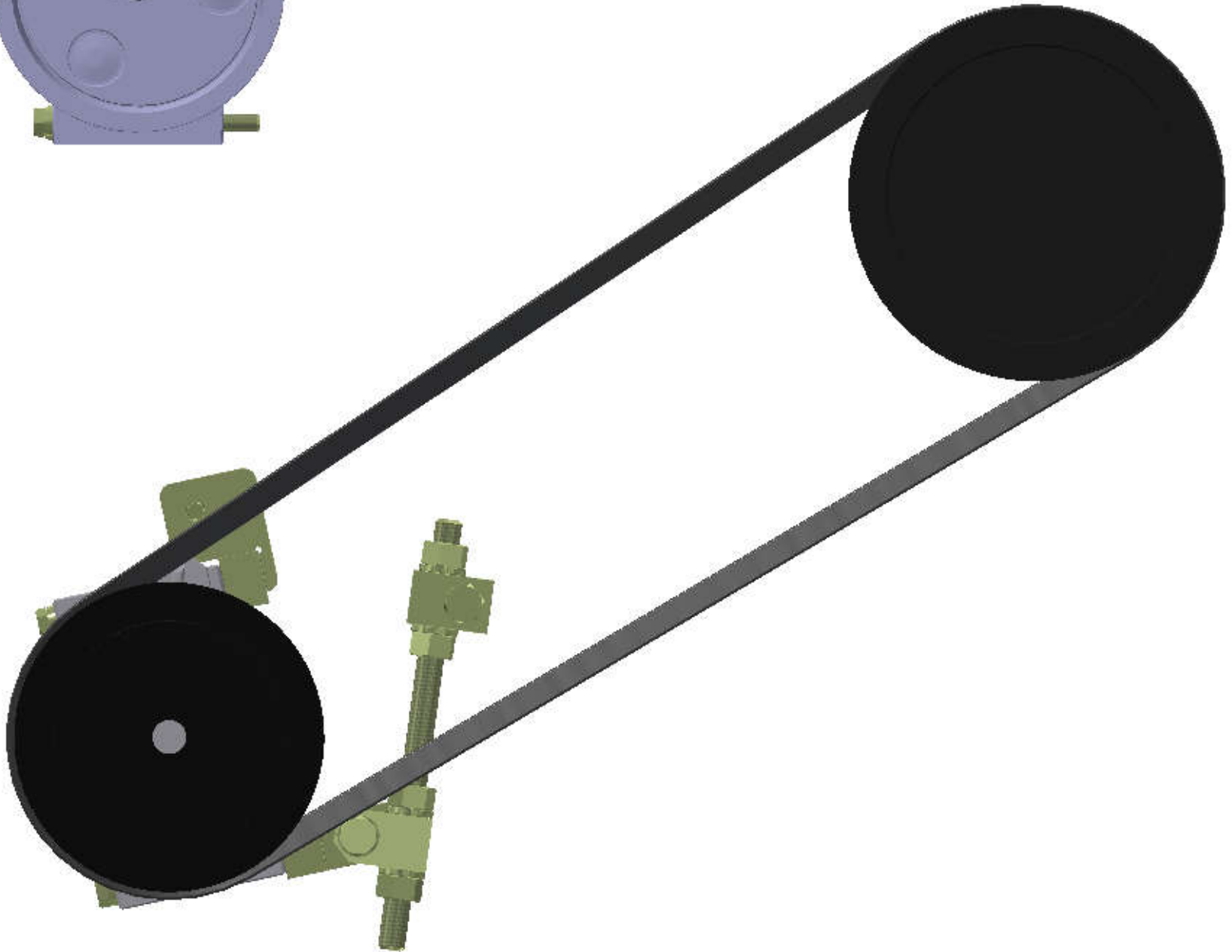


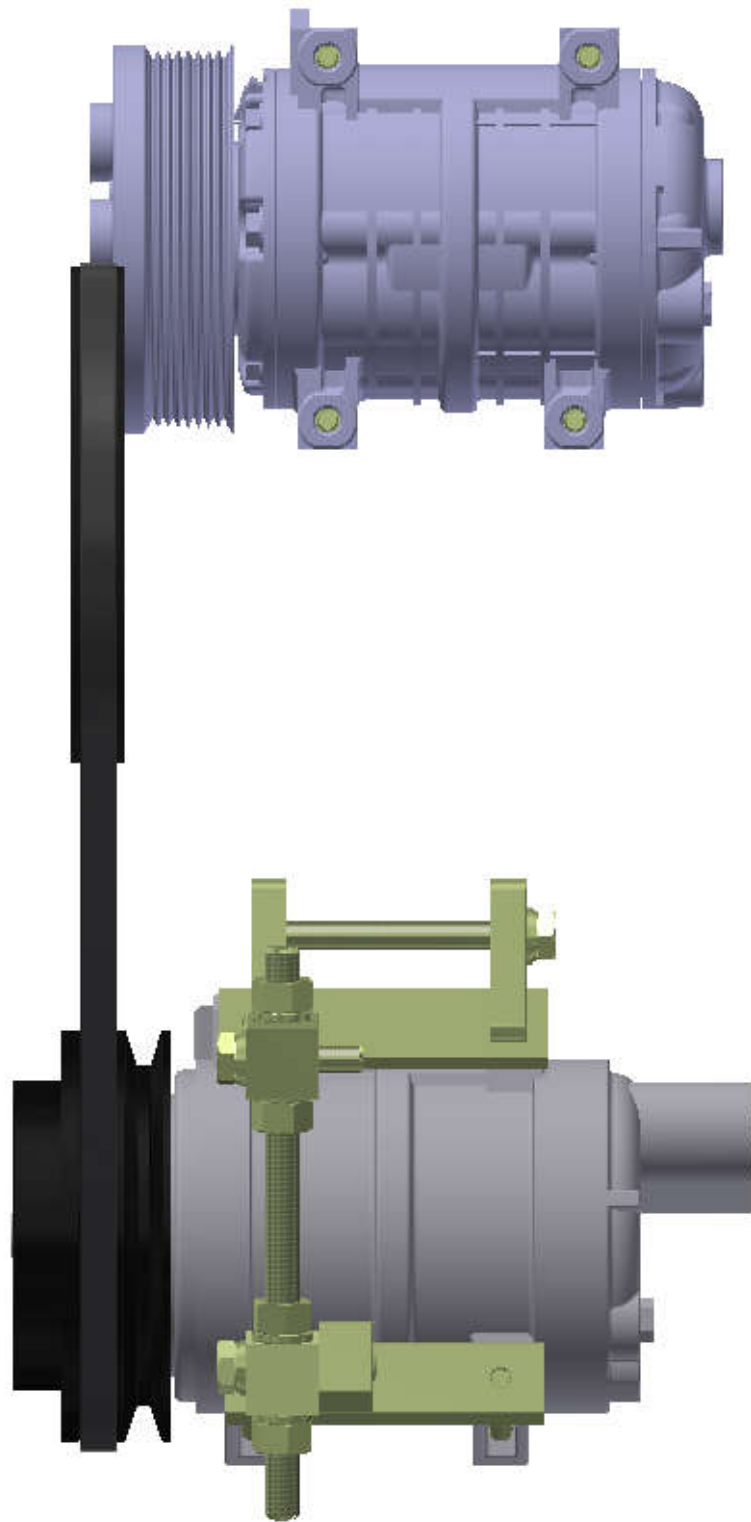
DRAWING UNIT OF MEASURE:	MM [INCH]
--------------------------	-----------

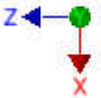
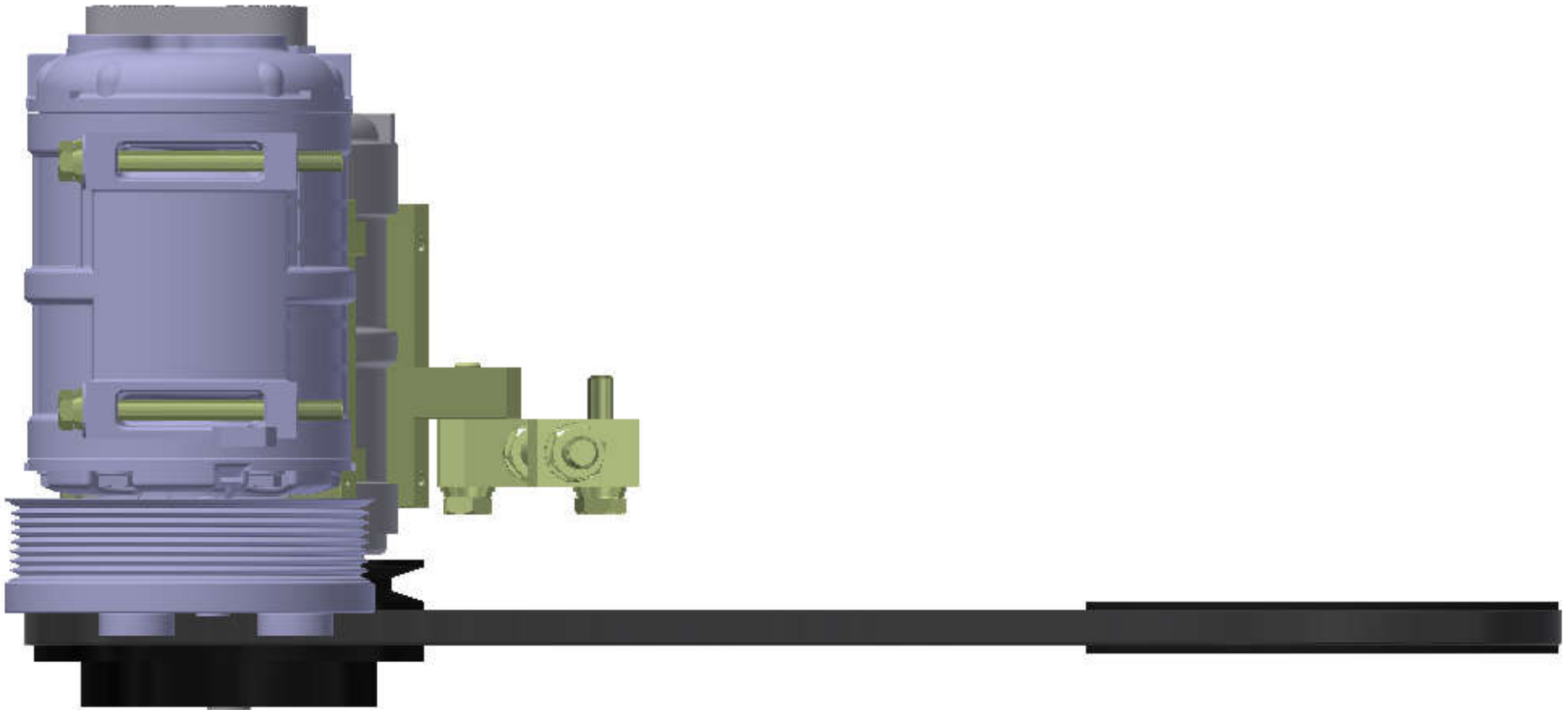
SIZE	C	DWG NO	KMC62681	REV	0
SCALE	1:3	SHEET 1 OF 1			



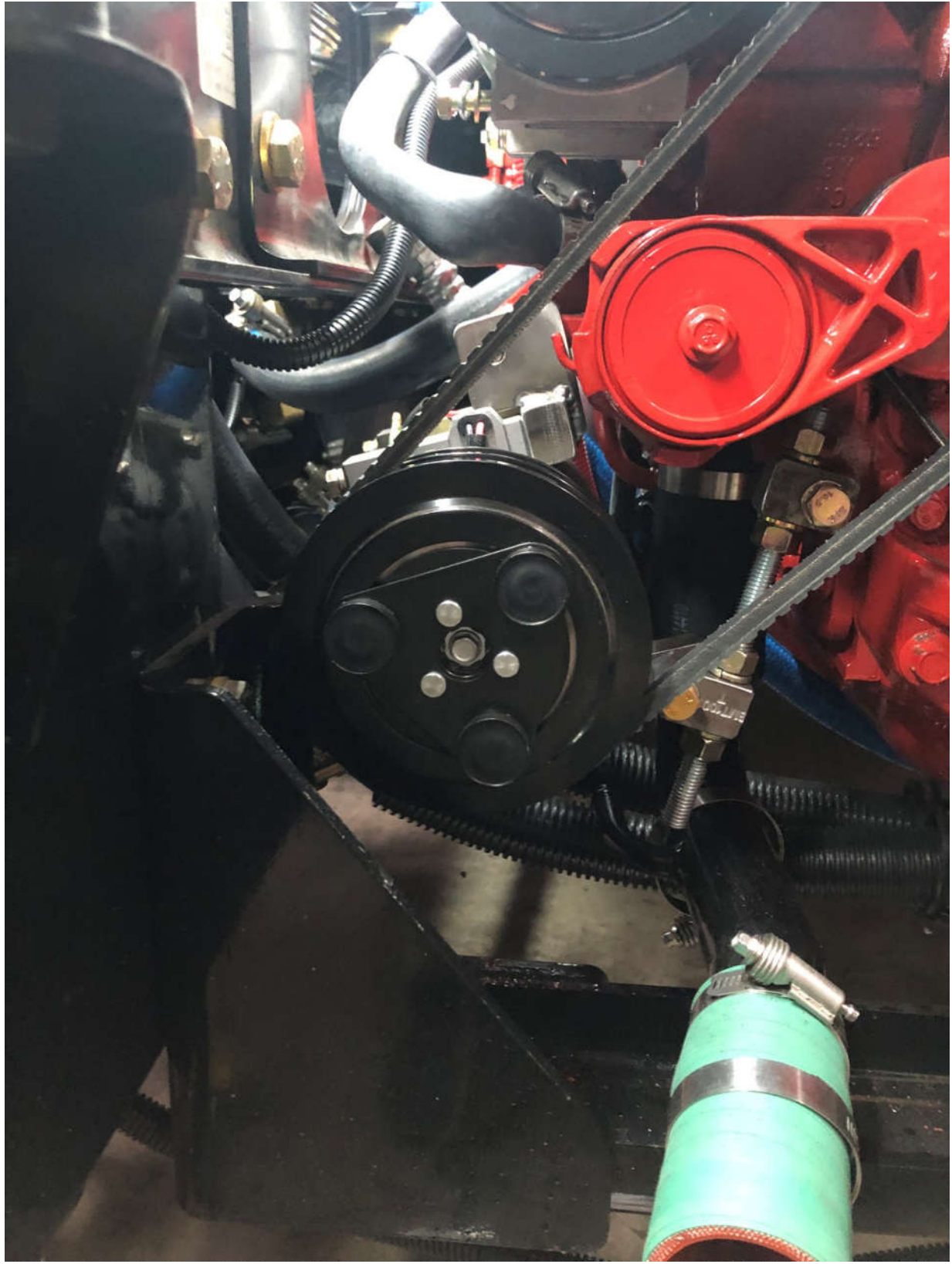














Ensure that there is sufficient clearance between the compressor pulley and the structural member and its components.

TransArctic A/C Compressor Mount Installation Disclaimer

All compressor mounts should be installed by qualified and trained personnel using proper tools and equipment in safe working conditions following industry standard guidelines for motor vehicle service and repair.

The installer of any compressor mount purchased from TransArctic must undertake all responsibility of issues arising from that compressor bracket being installed on any vehicle. As well as insure that a **proper and sufficient ground** is established between the compressors' clutches and the vehicle's engine. Mount functionality, operation and durability can all be compromised by an incompetent installation.

Due to the many different situations, parameters and application criteria, which are beyond the compressor mount manufacturer's control, TransArctic does not warrant design, durability, or operational functionality of any compressor mount improperly installed by another party.

With no implied guarantees it is the mount installer's strict responsibility to determine safety and functionality, of the compressor mount, at the time of installation.

Please contact TransArctic with any issue arising from installation so we may better improve the product. If you have any reservations about the compressor mount integrity contact TransArctic immediately at 1-877-COLD-AIR.

Mark OEM tensioner location

Install Kit

Check for Interferences

Check to ensure that the proper OEM tensioner orientation is maintained

Run engine with A/C system engaged for at least 10 minutes to run in belt

Check OEM tensioner orientation and adjust as required

Responsabilidad limitada de TransArctic en la instalación del soporte del compresor

Todos los soportes de los compresores deben ser instalados por personas calificadas y entrenadas, usando para ello los equipos y herramientas necesarios para esta labor en buenas condiciones y según las normas y guías para el servicio y/o reparación de motores de vehículos.

El instalador de los soportes comprados en TransArctic asume toda la responsabilidad de cualquier problema que surga en el soporte del compresor al vehículo; de igual manera es responsable que el cable a tierra sea conectado entre el embrague del compresor y el motor del vehículo.

Se advierte que el buen funcionamiento y la durabilidad del soporte pueden ser comprometidos por defectos en su instalación.

Debido a las diversas situaciones que se puedan presentar fuera del control del fabricante, TransArctic no garantiza el diseño, la durabilidad o el correcto funcionamiento de cualquier equipo inapropiadamente instalado por terceros.

Esta sobreentendido que el Instalador del montaje del compresor es estrictamente responsable de la seguridad y funcionamiento del equipo en el momento de la instalación.

Si tuviera algún problema o duda acerca de la instalación del soporte del compresor pongase en contacto inmediatamente con TransArctic al teléfono 1-877-COLD-AIR de modo que podamos mejorar nuestro producto.

Note la ubicación del medidor de tensión OEM

Instale el equipo

Controlar si hay interferencias.

Asegure que el medidor de tensión mantenga la orientación justa.

Encienda el motor por lo menos 10 minutos con el sistema A/C enganchado para que la correa corra

Controle la orientación justa del medidor de tensión y ajuste a las condiciones requeridas del fabricante