

# Bill of Materials Listing

TransArctic Canada Inc.

2/25/2009  
Page 1 of 1

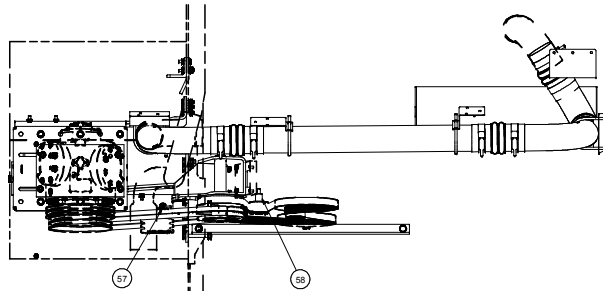
Product Number		Description	Bin	Date	Weight	Uof M	Yield
Line	Component Prod#	Description		Unit	Qty		
<b>KMN82461</b>		<b>Mt. Kit, DT466, RE300, 05K W/O ALT</b>		<b>3/31/2006</b>	<b>253.66</b>		<b>0</b>
10	BEL83035	Belt, 8gr, 3035mm (119.5") (5081195)		each	1		
20	BEL21981	Belt, B gr, 1981mm (78") (BX75), MATCHED		each	2		
40	BMN60001	Bkt, Spacer, DT466, CE300		each	1		
50	BMN80003	Bkt, Main, Weldmt, IC, RE300		each	1		
60	BMN80008	Vibration Isolator, Bar, 16.63 x 2 x 1.63		each	2		
70	BMN80009	Bkt, Main, Base Pl, IC, RE300		each	1		
80	BMN80031	Bkt, Main, Slide, Assy, 05K, IC, RE300		each	1		
90	BMN80013	Bkt, Main, Front Pl, IC, RE300		each	1		
100	BMN80014	Bkt, Main, Front Rein Pl, IC, RE300		each	1		
110	BMN80015	Bkt, Main, Rear Pl, IC, RE300		each	1		
140	BMN80018	Bkt, Main, Brace, IC, RE300		each	1		
150	BMN80020	Bkt, B/S, Idler Mt, IC, RE300		each	1		
160	BMN80021	Bkt, Angle, Frame, IC, RE300		each	1		
170	BMN80022	Bkt, Angle, Vert, IC, RE300		each	1		
180	BMN80023	Bkt, Rad, Tie, Angle, IC, RE300		each	1		
190	BMN80032	Bkt, Adapter, PL, IC, RE300		each	1		
200	BMN80025	Bkt, Back, PL, Slide, IC, RE300		each	1		
210	BMN80026	Bkt, Int Cooler, Vert, P/S, IC, RE300		each	1		
220	BMN80027	Bkt, Int Cooler, Hor, P/S, IC, RE300		each	1		
230	BMN80028	Bkt, Int Cooler, Hor, D/S, IC, RE300		each	1		
240	BMN80029	Bkt, Int Cooler, Vert, D/S, IC, RE300		each	1		
250	BMN80030	Bkt, Air Inlet, Vert, D/S, IC, RE300		each	1		
260	BMN60007	Bkt, Sup, Air Filter, RE300, NAV466		each	1		
270	PUA84101	Pulley, Assy, Idler, P8/2B gr,7",STL,Plt		each	1		
280	PUA05002	Pulley, Assy, Idler,B/BX gr,5", ALUM,Plt		each	1		
290	PUL80076	Pulley, Idler, Backside, P8, 76d (89062)		each	3		
320	SCD29012	Spacer, Col, Drl, 29mm x 25.4o x 12.3i		each	1		
330	SCD39710	Spacer, Col, Drl, 39.7mm x 25.4o x 10.3i		each	1		
340	SLV17010	Sleeve, Pulley, 16.9o x 22.23mm x 10.32i		each	1		
350	SLV17012	Sleeve, Pulley, 16.9o x 22.23mm x 12.32i		each	1		
360	TEN00003	Tenr, Spring, Un-Direct, 90d, 1/2 x 4.5"		each	1		
370	WFS12001	Washer, Flat, Step, 12mm, 69.85, Plt		each	1		
380	BTS06400	Bolt, U, 3/8-16, 4.00 W/IS, Nut/Pl, PLT		each	4		
390	CLP04000	Clamp, T bolt, Spring, 4", CAC		each	6		
400	HOA04083	Hose, Flex, CAC, 4.0d x 8.0, 3 ring		each	3		
410	TUS04059	Tube, Stl, Exh, 4"o.d., 59 deg U, 12x8.5		each	1		
420	TUS04094	Tube, Stl, Exh, 4"o.d., 90 deg elb, 10x51.5		each	1		
450	HOR03800	Hose, Heater, 3/8" ID, (250' - 80235GL)		feet	5.00		
460	FTP06090	Ftg, Pipe, Elb, 1/4"npt to 3/8" barb, Brass		each	1		
470	FTS12001	Ftg, Adap, M12 x 1.5 x 1/4" fnpt, STL		each	1		
480	ORS12001	O Ring, Seal, 12 mm metric		each	1		
490	KBN82461	Bag Kit, Fasteners, KMN82461		each	1		

# Bill of Materials Listing

TransArctic Canada Inc.

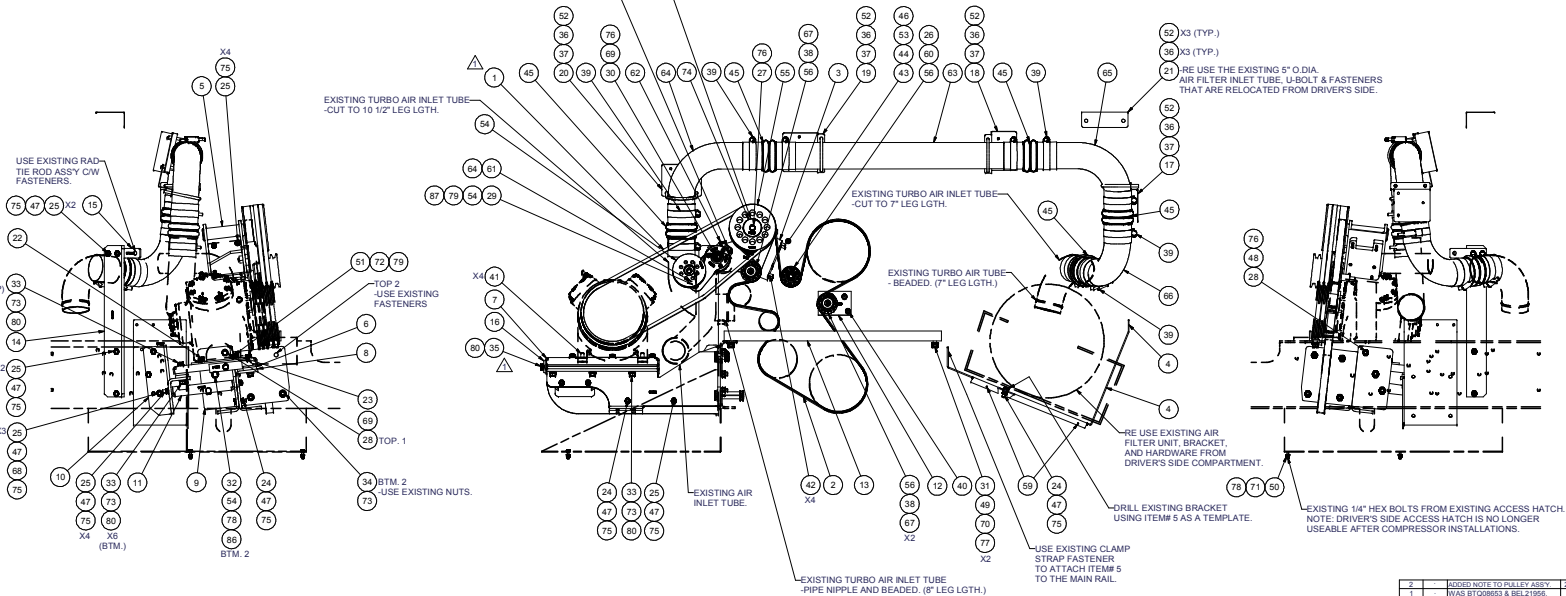
2/25/2009  
Page 1 of 1

Product Number		Description	Bin	Date	Weight	Uof M	Yield
Line	Component Prod#	Description		Unit	Qty		
<b>KBN82461</b>		<b>Bag Kit, Fasteners, KMN82461</b>		<b>5/9/2006</b>	<b>7.09</b>		<b>0</b>
10	BTC14040	Bolt, Hex, 14 x 2 x 40mm, 10.9, Plt		each	2		
20	BTC14030	Bolt, Hex, 14 x 2 x 30mm, 10.9, Plt		each	2		
30	BTC12100	Bolt, Hex, 12 x 1.75 x 100mm, 10.9, Plt		each	1		
40	BTC12080	Bolt, Hex, 12 x 1.75 x 80mm, 10.9, Plt		each	1		
50	BTC12040	Bolt, Hex, 12 x 1.75 x 40mm, 10.9, Plt		each	1		
60	BTC12030	Bolt, Hex, 12 x 1.75 x 30mm, 10.9, Plt		each	1		
70	BTC10090	Bolt, Hex, 10 x 1.5 x 90mm, 10.9, Plt		each	1		
80	BTC10040	Bolt, Hex, 10 x 1.5 x 40mm, 10.9, Plt		each	16		
90	BTC10030	Bolt, Hex, 10 x 1.5 x 30mm, 10.9, Plt		each	2		
100	BTQ08126	Bolt, Hex, 1/2-20unf, 1.25", 8, Plt		each	12		
130	BTQ08401	Bolt, Hex, 1/2-20unf, 4", 8, Plt		each	2		
140	BTP08653	Bolt, Hex, 1/2-13unc, 6.5", 5, Plt, FT		each	1		
160	BTS10001	Bolt, Shoulder, 10mm (89064)		each	2		
170	BTS04100	Bolt, Hex, Flg, Ser, 1/4-20, 1", 8.2,Plt		each	18		
180	CSF08021	Capscrew, FH, 8 x 1.25 x 20mm, 10.9,Plt		each	4		
190	CSS08040	Capscrew, SH, 8 x 1.25 x 40mm, 12.9, Plt		each	4		
200	CSF08100	Capscrew, FH, 1/2-13 x 1", Alloy, Plt		each	4		
210	SCH03075	Screw, Hex, Flg, SDT, 12-14 x .75,ST,Plt		each	2		
220	NTA10000	Nut, Hex, 10 x 1.5, 8.8, Plt		each	14		
230	NTA12000	Nut, Hex, 12 x 1.75, 8.8, Plt		each	2		
240	NTA14000	Nut, Hex, 14 x 2, 8.8, Plt		each	4		
250	NTP04000	Nut, Hex, 1/4-20unc, 5, Plt		each	2		
260	NTP07000	Nut, Hex, 7/16-14unc, 5, Plt		each	4		
280	NTS04001	Nut, Riv, 1/4-20 unc		each	18		
290	WDS17001	Washer, Dust Cover (89060)		each	2		
300	WFA10000	Washer, Flat, 10mm, 8.8, Plt		each	4		
310	WFA12000	Washer, Flat, 12mm, 8.8, Plt		each	3		
320	WFA14000	Washer, Flat, 14mm, 8.8, Plt		each	4		
330	WFN04000	Washer, Flat, 1/4", 2, Plt		each	2		
340	WFN07000	Washer, Flat, 7/16", 2, Plt		each	4		
350	WFN08000	Washer, Flat, 1/2", 2, Plt		each	14		
360	WLA10000	Washer, Lock, 10mm, 8.8, Plt		each	19		
370	WLA12000	Washer, Lock, 12mm, 8.8, Plt		each	4		
380	WLA14000	Washer, Lock, 14mm, 8.8, Plt		each	4		
390	WLP04000	Washer, Lock, 1/4", 5, Plt		each	2		
400	WLP07000	Washer, Lock, 7/16", 5, Plt		each	4		
410	WLP08000	Washer, Lock, 1/2", 5, Plt		each	13		



**TENSIONER INSTALLATION & ORIENTATION:**  
 RE-ASSEMBLE TENSIONER (IF REQUIRED) TO SUIT A C/W ROTATION. (ARROW ALWAYS POINTS TO THE BELT THAT IS TO BE TENSIONED.)  
 THE FRONT SIDE IDLER PULLEY (AFTER BEING ASSEMBLED TO THE TENSIONER), IS TO BE IN THE 6 O'CLOCK POSITION (WITH NO TENSION ON THE SPRING) IN RELATION TO THE TENSIONER BASE.  
 THE TENSIONER IS INSTALLED BY ALIGNING THE NOTCH IN THE BASE OF THE TENSIONER WITH THE 3/8" SQUARE BLOCK OF PART# BMN8003. (MAIN BRACKET WELDMENT) TIGHTEN TENSIONER FASTENER.  
 INSTALL "BX" MATCHED BELTS, ALIGN AND ADJUST THE COMPRESSOR TO THE PROPER BELT TENSION THEN AFTER 3-5 MINUTES OF "RUN-IN" RE-MEASURE AND ADJUST BELT TENSION TO SUIT.

**CAUTION:**  
 DO NOT OVER TORQUE.  
 HAND TIGHTEN TO COMPRESS LOCKWASHER ONLY.  
 USE SERVICABLE THREADLOCKER.



ITEM	QTY	U/M	PART NUMBER	DESCRIPTION
80	13	EACH	WLPO8000	WASHER, LOCK, 1/2", 5, PLT
79	4	EACH	WLP07000	WASHER, LOCK, 7/16", 5, PLT
78	2	EACH	WLP06000	WASHER, LOCK, 1/4", 5, PLT
77	4	EACH	WLA14000	WASHER, LOCK, 14mm, 8.8, PLT
76	4	EACH	WLA12000	WASHER, LOCK, 12mm, 8.8, PLT
75	19	EACH	WLA10000	WASHER, LOCK, 10mm, 8.8, PLT
74	1	EACH	WFS12001	WASHER, FLAT, STEP, 12mm, 69.85, PLT
73	14	EACH	WFN08000	WASHER, FLAT, 1/2", 2, PLT
72	4	EACH	WFN07000	WASHER, FLAT, 7/16", 2, PLT
71	2	EACH	WFN04000	WASHER, FLAT, 1/4", 2, PLT
70	4	EACH	WFA14000	WASHER, FLAT, 14mm, 8.8, PLT
69	3	EACH	WFA12000	WASHER, FLAT, 12mm, 8.8, PLT
68	4	EACH	WFA10000	WASHER, FLAT, 10mm, 8.8, PLT
67	2	EACH	WDS17001	WASHER, DUST COVER (PUL80076)
66	1	EACH	TUS04093	TUBE, STL, EXH, 4" o.d., 90 deg ELB, 8.5x8
65	1	EACH	TUS04092	TUBE, STL, EXH, 4" o.d., 90 deg ELB, 12x8
64	1	EACH	TUS04091	TUBE, STL, EXH, 4" o.d., 90 deg ELB, 12x10
63	1	EACH	TUS04000-3700	TUBE, STL, EXH, 4" o.d. x 37"
62	1	EACH	TEN09003	TENS. SPRING, UN-DIRECT, 90d, 12 x 4.5"
61	1	EACH	SLV17012	SLEEVE, PULLEY, 16.9x x 22.23mm x 12.19l
60	1	EACH	SLV17010	SLEEVE, PULLEY, 16.9x x 22.23mm x 10.32l
59	2	EACH	SCW03075	SCREW, HEX, FLG, SDR, 12-14 x .75, STL, PLT
58	1	EACH	SCS39710	SPACER, COL, DRL, 39.7mm x 25.4x x 10.3l
57	1	EACH	SCD29012	SPACER, COL, DRL, 29mm x 25.4x x 12.3l
56	3	EACH	PUL80076	PULLEY, IDLER, BACKSIDE, P8, 76D, 39W
55	1	EACH	PJA84101	PULLEY, ASSY, IDLER, P8x29, gr. 7, STL, PLT
54	1	EACH	PJA09002	PULLEY, ASSY, IDLER, A8, 57, ALUM, PLT
53	1	EACH	ORS12001	O RING, SEAL, 12 MM METRIC
52	18	EACH	NTS04001	NUT, RIV, 1/4-20 UNC
51	4	EACH	NTP07000	NUT, HEX, 1/4"-14 UNC, S, PLT
50	2	EACH	NTP04000	NUT, HEX, 1/4"-20 UNC, S, PLT
49	4	EACH	NTA14000	NUT, HEX, 1/4 x 2, 8.8, PLT
48	2	EACH	NTA12000	NUT, HEX, 1/2 x 1.75, 8.8, PLT
47	14	EACH	NTA10000	NUT, HEX, 10 x 1.5, 8.8, PLT
46	5	EACH	HOR03800	HOSE, HEATER, 3/8" ID, (250-80235GL)
45	5	EACH	HOA04083	HOSE, FLEX, CAC, 4.0d x 8.0, 3 RING
44	1	EACH	FTS12001	FTG. ADAP, M12 x 1.5 x 1/4" FNPT, STL
43	1	EACH	FTP06095	FTG. PIPE ELB, 1/4" FNPT TO 3/8" BARS BRASS
42	4	EACH	CSB08040	CAPSCREW, SH, 8 x 1.25 x 40mm, 12.9, PLT
41	4	EACH	CSF08100	CAPSCREW, FH, 3-8-16 x 1", 9, PLT
40	4	EACH	CSF08021	CAPSCREW, FH, 8 x 1.25 x 10mm, 10.9, PLT
39	10	EACH	CLP04000	CLAMP, T BOLT, SPRING, 4", CAC
38	2	EACH	BTS10001	BOLT, SHOULDER, 10mm (IDLER PULLEY)
37	4	EACH	BTS06400	Bolt, U, 3/8-16, 4.00 W/S, Nut/Plt
36	18	EACH	BTS04100	BOLT, HEX, FLG, SER, 1/4-20, 1", 8.2, PLT
35	1	EACH	BTP09653	BOLT, HEX, 1/2-20 UNC x 6.5, 9, PLT, FT
34	2	EACH	BTC08401	BOLT, HEX, 1/2-20 UNF x 4.00, 8, PLT
33	12	EACH	BTC08126	BOLT, HEX, 1/2-20 UNF x 1.25, 8, PLT
32	2	EACH	BTC14040	BOLT, HEX, 1/4 x 2 x 40mm, 10.9, PLT
31	2	EACH	BTC14030	BOLT, HEX, 1/4 x 2 x 30mm, 10.9, PLT
30	1	EACH	BTC12100	BOLT, HEX, 12 x 1.75 x 100mm, 10.9, PLT
29	1	EACH	BTC12080	BOLT, HEX, 12 x 1.75 x 80mm, 10.9, PLT
28	1	EACH	BTC12040	BOLT, HEX, 12 x 1.75 x 40mm, 10.9, PLT
27	1	EACH	BTC12030	BOLT, HEX, 12 x 1.75 x 30mm, 10.9, PLT
26	1	EACH	BTC10090	BOLT, HEX, 10 x 1.5 x 90mm, 10.9, PLT
25	16	EACH	BTC10040	BOLT, HEX, 10 x 1.5 x 40mm, 10.9, PLT
24	2	EACH	BTC10030	BOLT, HEX, 10 x 1.5 x 30mm, 10.9, PLT
23	1	EACH	BMN80032	BKT. ADAPTER, PL, IC, RE300
22	1	EACH	BMN80031	BKT. MAIN, SLIDE, ASSY, OSK, IC, RE300
21	1	EACH	BMN80030	BKT. AIR INLET, VERT, PIS, IC, RE300
20	1	EACH	BMN80029	BKT. INT COOLER, VERT, D/S, IC, RE300
19	1	EACH	BMN80028	BKT. INT COOLER, HOR, D/S, IC, RE300
18	1	EACH	BMN80027	BKT. INT COOLER, HOR, P/S, IC, RE300
17	1	EACH	BMN80026	BKT. INT COOLER, VERT, P/S, IC, RE300
16	1	EACH	BMN80025	BKT. BACK, PL, SLIDE, IC, RE300
15	1	EACH	BMN80024	BKT. RAIL, TIE, ANGLE, IC, RE300
14	1	EACH	BMN80022	BKT. ANGLE, VERT, IC, RE300
13	1	EACH	BMN80021	BKT. ANGLE, CHASSIS, IC, RE300
12	1	EACH	BMN80020	BKT. B/S IDLER, MT, IC, RE300
11	1	EACH	BMN80018	BKT. MAIN, BRACE, IC, RE300
10	1	EACH	BMN80015	BKT. MAIN, REAR PL, IC, RE300
9	1	EACH	BMN80014	BKT. MAIN, FRONT REIN PL, IC, RE300
8	1	EACH	BMN80013	BKT. MAIN, FRONT PL, IC, RE300
7	1	EACH	BMN80009	BKT. MAIN, BASE PL, IC, RE300
6	2	EACH	BMN80008	VIBRATION ISOLATOR, BAR, 16.63 x 2 x 1.63
5	1	EACH	BMN80003	BKT. MAIN, WELDMT, IC, RE300
4	1	EACH	BMN80002	BKT. SUPP. AIR FILTER, RE300, NAV466
3	1	EACH	BMN80001	SPR. DT466, RE300
2	1	EACH	BEL83035	BELT, 8 GR, 303mm (119.5")
1	2	EACH	BEL21881	BELT, B Gr, 1881mm (78") (BX75) MATCHED

DRAWN				BILL OF MATERIALS			
1	ADDENDUM TO PULLEY ASSY	02/20/2009	VALU	1	5/11/2006		
2	WASER, LOCK, 1/4", 5, PLT	7/27/2006	VALU	1	5/11/2006		
3	RE-ASSEMBLY PRESCRIPTION	02/20/2009	VALU	1	5/11/2006		
REV	ECN	DESCRIPTION	DATE	BY			
				James Stewart			
				WFG			
				Val Jaborovic			
				APPROVED			
				Dale Mason	5/11/2006		

**NOTES:**  
 1) USE SERVICABLE THREADLOCKER ON ALL FASTENERS TO ENGINE COMPONENTS AND TORQUE ALL BOLTS TO S.A.E. SPECIFICATIONS.  
 2) SEE "TRANSARCTIC A/C COMPRESSOR MOUNT INSTALLATION DISCLAIMER".

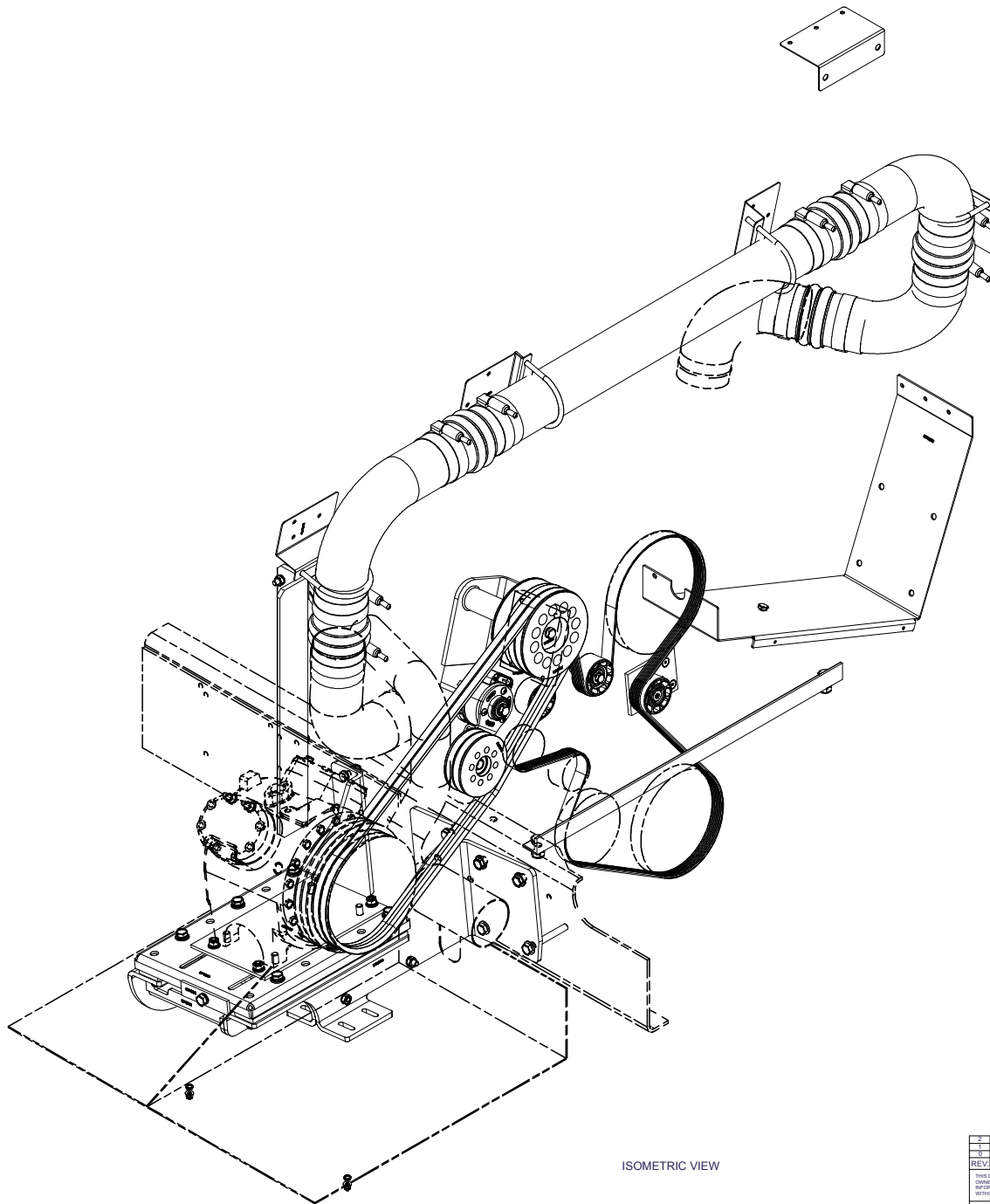
Mt. Kit, DT466, RE300, OSK, -ALT			
DWG NO	REV	SCALE	SHEET
KMN82461	2	1:8	1 OF 2

THIS DRAWING CONTAINS PROPRIETARY CONFIDENTIAL INFORMATION OWNED BY TRANSARCTIC CANADA INC. THE DOCUMENT AND THE INFORMATION IN IT ARE NOT TO BE USED, DISCLOSED OR REPRODUCED WITHOUT EXPRESS WRITTEN PERMISSION OF THE COMPANY.

UNSPECIFIED TOLERANCES: FRACTIONAL DECIMAL INCH UNLESS OTHERWISE SPECIFIED

THIRD ANGLE PROJECTION

DRAWING UNIT OF MEASURE: MM (INCH)



ISOMETRIC VIEW

2		ADDED NOTE TO PULLEY ASSEMBLY	2/25/2006	VAL	DRAWN	5/11/2006	
1		WAS BTD00853 & BELT 1996	7/7/2006	VAL	CHECKED	5/11/2006	
0		RELEASED TO PRODUCTION	12/1/2006	VAL	RELEASED TO PRODUCTION	5/11/2006	TITLE
REV	ECN	DESCRIPTION	DATE	BY	BY	DATE	<b>Mt. Kit, DT466, RE300, 05K, -ALT</b>
				James Stewart	MFG	5/11/2006	SIZE
					Val Jakovlew	5/11/2006	F
					Dale Mason	5/11/2006	SCALE
							NTS
<b>UNSPECIFIED TOLERANCES:</b> DIMENSIONS IN INCH: .005 DIMENSIONS IN MILLIMETERS: .15 HOLE DIMENSIONS: .005 HOLE LOCATIONS: .015 HOLE PATTERNS: .015		THIRD ANGLE PROJECTION	DRAWING UNIT OF MEASURE: MM (INCH)	SCALE: NTS	DWG NO: KMN82461	REV: 2	SHEET 2 OF 2

**KMN84160 - Mt. Kit, DT466, RE300, 05G W/ALT**  
**KMN82460 - Mt. Kit, DT466, RE300, 05K W/ALT**  
**KMN82461 - Mt. Kit, DT466, RE300, 05K W/O ALT**

## **DO NOT REMOVE RADIATOR**

### **TransArctic A/C Compressor Mount Installation Disclaimer**

All compressor mounts should be installed by qualified and trained personnel using proper tools and equipment in safe working conditions following industry standard guidelines for motor vehicle service and repair.

The installer of any compressor mount purchased from TransArctic must undertake all responsibility of issues arising from that compressor bracket being installed on any vehicle. Mount functionality, operation and durability can all be compromised by an incompetent installation.

Due to the many different situations, parameters and application criteria, which are beyond the compressor mount manufacturer's control, TransArctic does not warrant design, durability, or operational functionality of any compressor mount improperly installed by another party.

**With no implied guarantees it is the mount installer's strict responsibility to determine safety and functionality, of the compressor mount, at the time of installation.**

Please contact TransArctic with any issue arising from installation so we may better improve the product. If you have any reservations about the compressor mount integrity contact TransArctic immediately at 1-877-COLD-AIR.



Air Filter and Air Intake stack is moved to curbside of bus. See Photos below



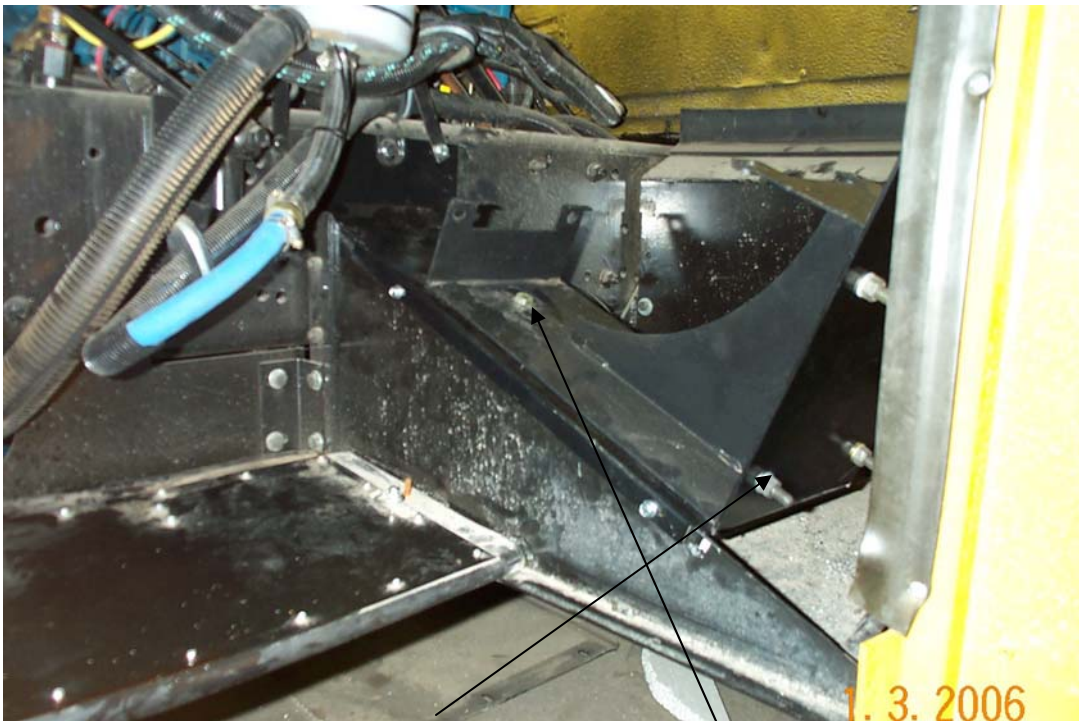
Cut Turbo inlet tube as show at white line. Debur and Clean all parts.

Remove OEM Air Filter and Bracket from Drivers side. This part used at air Filter





Navistar Air Filter brackets mounts on our BMN60007 bracket mounted on curbside.



Mount Air Filter bracket with 4 bolts then drill this bolt hole.



Bracket BMN80026 supplied in kit see Mount Drawing



Note Air Filter rotation / This is the remant part of the cut part



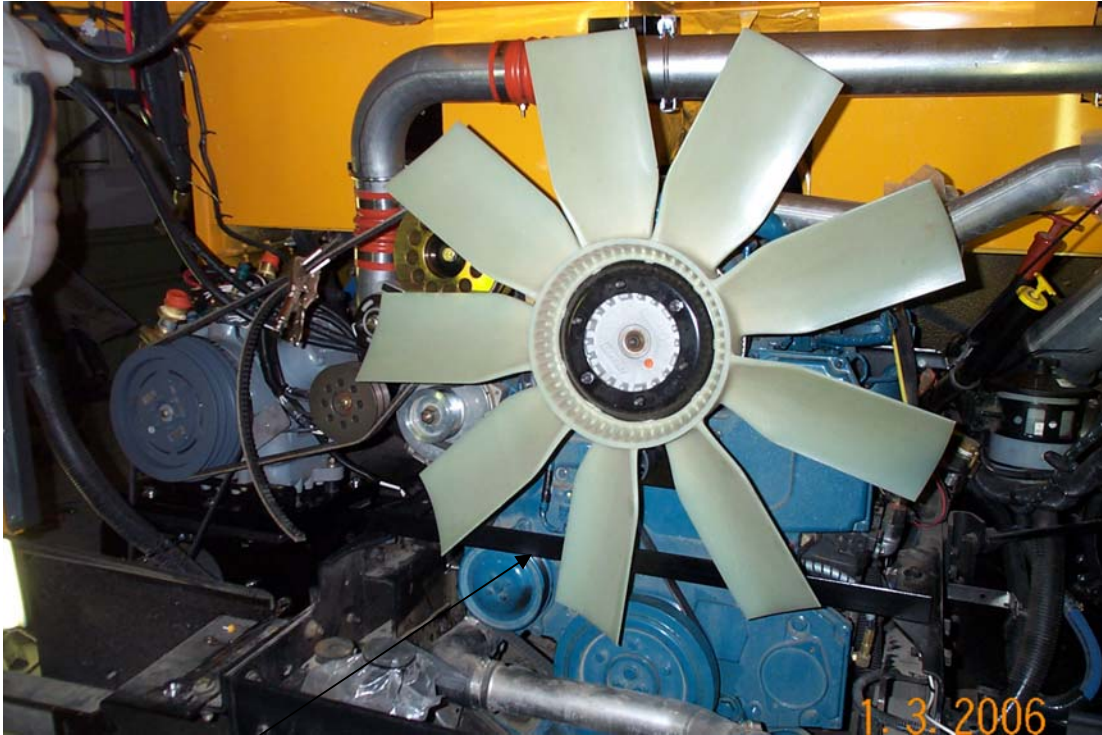


Install Air intake in curbside air intake cavity using BMN80030  
Support Intake Tube on reinforced surfaces using supplied nutserts.



Install BMN80020 without removing Radiator. Install BMN60001 Spacer, BMN80003  
Jackshaft bracket, Combo Pulley and idlers as per drawing. Install Brass Fitting, O-Ring,  
Elbow and Overflow hose.





Install BMN80021 and tighten before installing Compressor brackets.



Install Main Compressor Brackets as per drawing.



Install BMN80022 Rad Support Bracket and re-assign Rad Support Rod from OEM position to new position on BMN80023 at top of Rad Support Bracket.



Install Compressor Mounting Plate, Compressor, Tensioner, Alternator and Belts as per drawing. Run Compressor and check pulleys and belts for alignment.