

Bill of Materials Listing

TransArctic Canada Inc.

11/23/2017
Page 1 of 1

Product Number	Description	Date	Weight	Uof M	Yield
Line Component Prod# Description	Bin	Unit	Qty		
KMC62503	Mt Kit, ISB, 6.7L, TH C2, F400, '07- '16	1/23/2017	114.85		0
10 BEL30787	Belt, Banded B gr,787mm (31") (41-1320)	each	1		
20 BEL82370	Belt, 8gr, 2370mm (93.3")	each	1		
30 BMC60034	Bkt, Main, Weldmt, TH C2, F400, '07	each	1		
40 BMC67026	Bkt, Support, RAD, F400, TH Cum C2, BLK	each	1		
50 HOA03045	Hose, Flex, CAC, Elb, Silicon, 3.0 x 45d	each	1		
60 KCB62503	Kit, Compressor, F400, C2, '16	each	1		
70 PUA62502	Pulley, Assy,Idler,P8/2B gr, STL, PLT	each	1		
80 PUL67088	Pulley, Fan, OEM, Repl, ISB,6.7, 8gr, 6"	each	1		
90 PUL80076	Pulley, Idler, Backside, P8, 76d (89101)	each	1		
100 TUS03035	Tube, Stl, 3"/ 3.5" O.D, C2, F400	each	1		
110 KBC62503	Bag Kit, Fasteners, KMC62503	each	1		

Bill of Materials Listing

TransArctic Canada Inc.

11/23/2017
Page 1 of 1

Product Number	Description	Date	Weight	Uof M	Yield
Line Component Prod#	Description	Bin Unit	Qty		
KBC62503	Bag Kit, Fasteners, KMC62503	1/23/2017	0.63		0
10	BTC08030				
	Bolt, Hex, 8 x 1.25 x 30mm, 10.9, Plt,FT	each	4		
20	BTC12030				
	Bolt, Hex, 12 x 1.75 x 30mm, 10.9, Plt	each	1		
30	BTS10001				
	Bolt, Shoulder, 10mm (89064)	each	1		
40	CSF10026				
	Capscrew, FH, 10 x 1.5 x 25mm, 10.9,Plt	each	1		
50	WFS12001				
	Washer, Flat, Step, 12mm, 69.85, Plt	each	1		
60	WLA08000				
	Washer, Lock, 8mm, 8.8, Plt	each	4		
70	WLA12000				
	Washer, Lock, 12mm, 8.8, Plt	each	1		

Bill of Materials Listing

TransArctic Canada Inc.

11/23/2017
Page 1 of 1

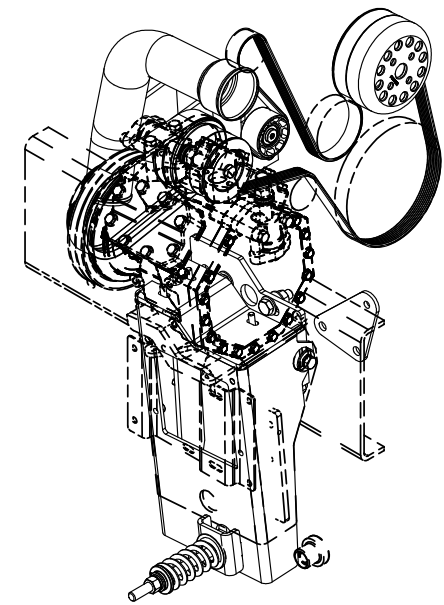
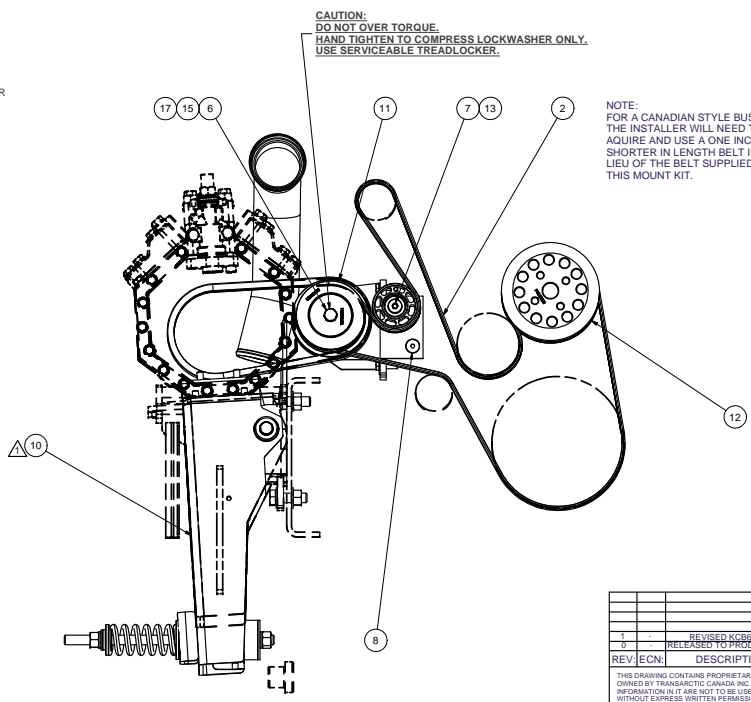
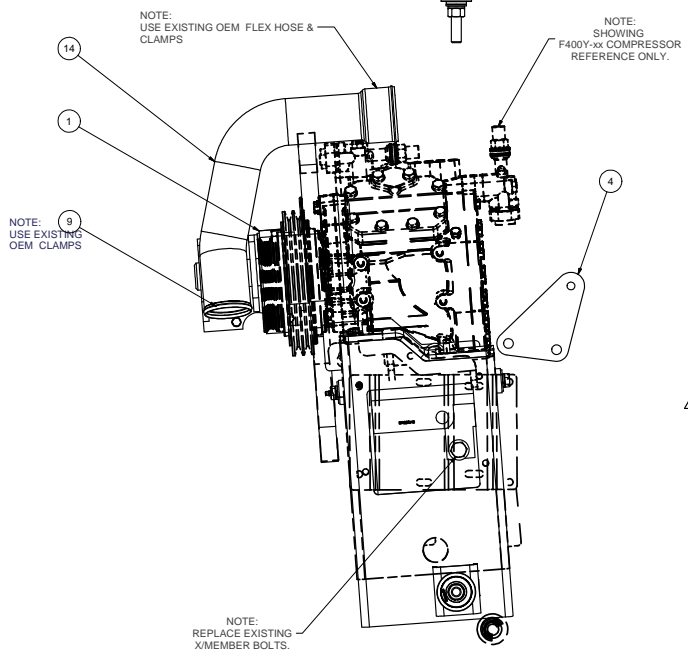
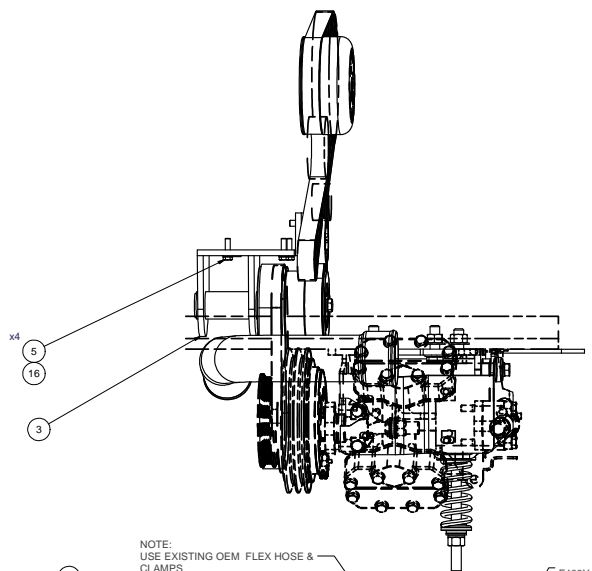
Product Number	Description	Date	Weight	Uof M	Yield
Line Component Prod#	Description	Bin Unit	Qty		
KCB62503	Kit, Compressor, F400, C2, '16		1/23/2017	46.52	0
10	BMC67136	Bkt, Weldm't, Main, Pivot, '16	each	1	
20	BMC67140	Bkt, Weldm't, Cradle, Frame, '16	each	1	
30	BMZ01041	Shaft Key, 5/16" SQ x .540" Long	each	2	
40	BTS08100	Bolt, Grease,Nipple,1/2-13 x 1.0"	each	1	
50	BUS01500	Bushing, Vibration Isolator, Rubber Core	each	1	
60	FTS04007	Ftg, Grease, Nipple, 1/4-28 UNF-2A,Brass	each	1	
70	PIS01010	Shaft, Stl, Grease, ADM Transit, '12	each	1	
80	SPR00002	Spring, Comp, R/H, 110 x 50 x 8.4, Red	each	1	
90	TRD06135	Threaded, Rod, 5/8-11unc x 13.5", 5, Plt	each	1	
100	KBZ62503	Bag Kit, Fasteners, KCB62503	each	1	

Bill of Materials Listing

TransArctic Canada Inc.

11/23/2017
Page 1 of 1

Product Number	Description	Date	Weight	Uof M	Yield
Line Component Prod#	Description	Bin Unit	Qty		
KBZ62503	Bag Kit, Fasteners, KCB62503		1/23/2017	2.38	0
10	BTC10030		Bolt, Hex, 10 x 1.5 x 30mm, 10.9, Plt	each	4
20	BTQ08100		Bolt, Hex, 1/2-13unc, 1.00", 8, Plt	each	1
30	BTQ10200		Bolt, Hex, 5/8-11unc, 2", 8, PLT	each	3
40	NTL10000		Nut, Lock, Hex, 5/8-11unc, 9, Plt	each	3
50	NTQ10000		Nut, Hex, 5/8-11unc, 8, Plt	each	3
60	WFA10000		Washer, Flat, 10mm, 8.8, Plt	each	4
70	WFQ10000		Washer, Flat, 5/8", 8, Plt	each	7
80	WFS08001		Washer, Flat, 1/2", 8, USS, Plt	each	2
90	WFS10002		Washer, Flat, 5/8" I.D, Plt	each	2
100	WFS16001		Washer, Flat, Dbl Step, 17mm, 50mm, Plt	each	1
110	WFS27001		Washer, Flat, Dbl Step, 27mm, 63.5, Plt	each	1
120	WLA10000		Washer, Lock, 10mm, 8.8, Plt	each	4
130	WLQ08000		Washer, Lock, 1/2", 8, Plt	each	2
140	WLQ10000		Washer, Lock, 5/8", 8, Plt	each	3



ISOMETRIC VIEW

CAUTION:
DO NOT OVER TORQUE.
HAND TIGHTEN TO COMPRESS LOCKWASHER ONLY.
USE SERVICEABLE TREADLOCKER.

NOTE:
FOR A CANADIAN STYLE BUS,
THE INSTALLER WILL NEED TO
ACQUIRE AND USE A ONE INCH
SHORTER IN LENGTH BELT IN
LIEU OF THE BELT SUPPLIED IN
THIS MOUNT KIT.

NOTES:
1) USE SERVICEABLE THREADLOCKER ON ALL FASTENERS TO ENGINE COMPONENTS AND TORQUE ALL BOLTS TO S.A.E. SPECIFICATIONS.
2) SEE "TRANSARGTIC A/C COMPRESSOR MOUNT INSTALLATION DISCLAIMER".

ITEM	QTY	U/M	PART NUMBER	DESCRIPTION
17	1	EACH	WLA12000	WASHER, LOCK, 12mm, 8.8, PLT
16	4	EACH	WLA08000	WASHER, LOCK, 8mm, 8.8, PLT
15	1	EACH	WFS12001	WASHER, FLAT, STEP, 12mm, 69.85, PLT
14	1	EACH	TUS03035	TUBE, STL, 3/1.35" O.D, C2, F400
13	1	EACH	PUL80076	PULLEY, IDLER, BACKSIDE, P8, 76D, 39W
12	1	EACH	PUL67088	PULLEY, FAN, OEM, REPL, ISB, 6.7, 8GR
11	1	EACH	PUA62502	PULLEY, ASSY, IDLER, P8/28 gr, STL, PLT
10	1	EACH	KCB62503	KIT, COMPRESSOR, F400, C2, 16
9	1	EACH	HOA03045	HOSE, FLEX, CAC, ELB, SILICON, 3.0 x 45D
8	1	EACH	CSF10026	CAPSCREW, FH, 10 x 1.5 x 25mm, 10.9, PLT
7	1	EACH	BTS10001	BOLT, SHOULDER, 10mm (IDLER PULLEY)
6	1	EACH	BTC12030	BOLT, HEX, 12 x 1.75 x 30mm, 10.9, PLT
5	4	EACH	BTC08030	BOLT, HEX, 8 x 1.25 x 30mm, 10.9, PLT
4	1	EACH	BMC67026	BKT, SUPPORT, RAD, TH CUMMINS, BLK
3	1	EACH	BMC60034	BKT, ALT, MAIN, WELDMT, THC2 F400, 07
2	1	EACH	BEL82370	BELT, B GR, 2388mm (94.0")
1	1	EACH	BEL30787	BELT, BANDED, B gr, 787mm (31")

TRANSARGTIC INC.

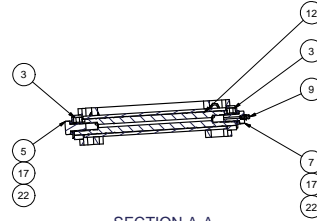
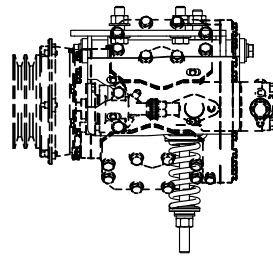
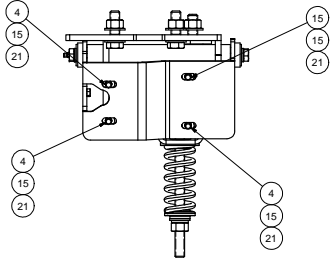
REV	DESCRIPTION	DATE	BY
1	REVISED KMC62503	11/22/2015	JRR
2	RELEASED TO PRODUCTION	11/26/2015	JRR
3	REVISED	11/26/2015	GA
4	REVISED	11/26/2015	JRR
5	REVISED	11/26/2015	JRR
6	REVISED	11/26/2015	JRR
7	REVISED	11/26/2015	JRR
8	REVISED	11/26/2015	JRR
9	REVISED	11/26/2015	JRR
10	REVISED	11/26/2015	JRR
11	REVISED	11/26/2015	JRR
12	REVISED	11/26/2015	JRR
13	REVISED	11/26/2015	JRR
14	REVISED	11/26/2015	JRR
15	REVISED	11/26/2015	JRR
16	REVISED	11/26/2015	JRR
17	REVISED	11/26/2015	JRR

MT KIT, ISB, 6.7L, TH C2, F400, '07-'16

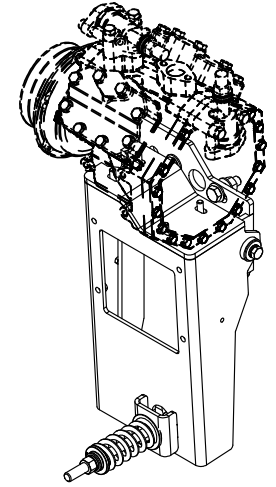
UNSPECIFIED TOLERANCES:	ALL DIMS	THIRD ANGLE PROJECTION	DRAWING UNIT OF MEASURE: MM (INCH)	SCALE: 1:1	SHEET 1 OF 1
ONE DECIMAL PLACE (X.0)	0.1 (1/16)				
TWO DECIMAL PLACE (X.00)	0.05 (1/32)				
THREE DECIMAL PLACE (X.000)	0.025 (1/64)				
FRACTIONAL (1/16)	1/16				

TOP VIEW

PARTS REMOVED FOR CLARITY.

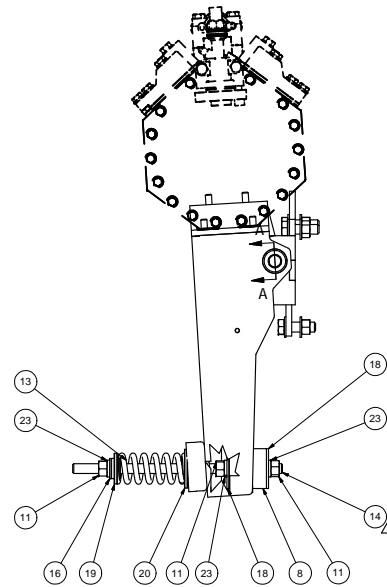
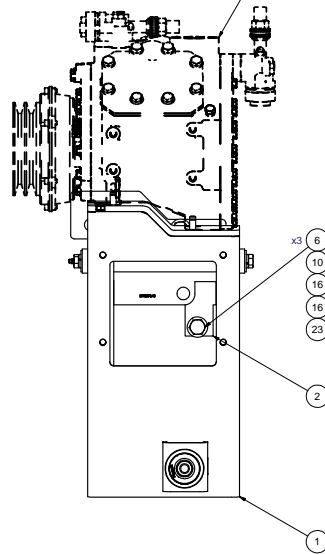


SECTION A-A
SCALE 1 / 4



ISOMETRIC VIEW

NOTE:
SHOWING
F400Y-xx COMPRESSOR
REFERENCE ONLY.



NOTES:

- 1) USE SERVICABLE THREADLOCKER ON ALL FASTENERS TO ENGINE COMPONENTS AND TORQUE **ALL** BOLTS TO S.A.E. SPECIFICATIONS.
- 2) SEE "TRANSARGTIC A/C COMPRESSOR MOUNT INSTALLATION DISCLAIMER".

ITEM	QTY	U/M	PART NUMBER	DESCRIPTION
23	3	EACH	WLO10000	WASHER, LOCK, 5/8", 8, PLT
22	2	EACH	WLO08000	WASHER, LOCK, 1/2", 8, PLT
21	4	EACH	WLA10000	WASHER, LOCK, 10mm, 8, 8, PLT
20	1	EACH	WFS27001	WASHER, FLAT, DBL STEP, 28mm, 63.5, PLT
19	1	EACH	WFS16001	WASHER, FLAT, DBL STEP, 16mm, 50mm, PLT
18	2	EACH	WFS10002	WASHER, FLAT, 5/8" ID, PLT
17	2	EACH	WFS08001	WASHER, FLAT, 1/2", 8, USS, PLT
16	7	EACH	WFO10000	WASHER, FLAT, 5/8", 8, PLT
15	4	EACH	WFA10000	WASHER, FLAT, 10mm, 8, 8, PLT
14	1	EACH	TRD06135	THREADED, ROD, 5/8-11UNC x 13.5", 5 PLT
13	1	EACH	SPR00002	SPRING, COMP, R/H, 110 x 50 x 8.4, RED
12	1	EACH	PIS01010	SHAFT, STL, GREASE, ADM TRANSIT, "12
11	3	EACH	NT010000	NUT, HEX, 5/8-11UNC, 8, PLT
10	3	EACH	NIL10000	NUT, LOCK, HEX, 5/8-11UNC, 9, PLT
9	1	EACH	FTS04007	FTG, GREASE, NIPPLE, 1/4-28 UNF-2A, BRASS
8	1	EACH	BUS01500	BUSHING, VIBRATION ISOLATOR, RUBBER CORE
7	1	EACH	BTS08100	BOLT, GREASE, NIPPLE, 1/2-13 x 1.00"
6	3	EACH	BTO10200	BOLT, HEX, 5/8-11UNC, 2", 8, PLT
5	1	EACH	BTO08100	BOLT, HEX, 1/2-13UNC x 1.00, 8, PLT
4	4	EACH	BTC10030	BOLT, HEX, 10 x 1.5 x 30mm, 10, 9, PLT
3	2	EACH	BMZ01041	Shaft Key, 5/16" SQ x .540" Long
2	1	EACH	BMK07140	BKT, WELDMT, CRADLE, FRAME, "16
1	1	EACH	BMK67136	BKT, WELDMT, MAIN PIVOT, "16

BILL OF MATERIALS

DRAWN	jrodriquez	1/18/2017
CHECKED		
RELEASED TO PRODUCTION	Vaj Jakovlew	1/18/2017
REVISION	DESCRIPTION	DATE
1	James Stewart	1/18/2017
2	James Stewart	1/18/2017
3	Dale Mason	1/18/2017

TRANSARGTIC INC.

TITLE: **KIT, COMPRESSOR, F400, C2, '16**

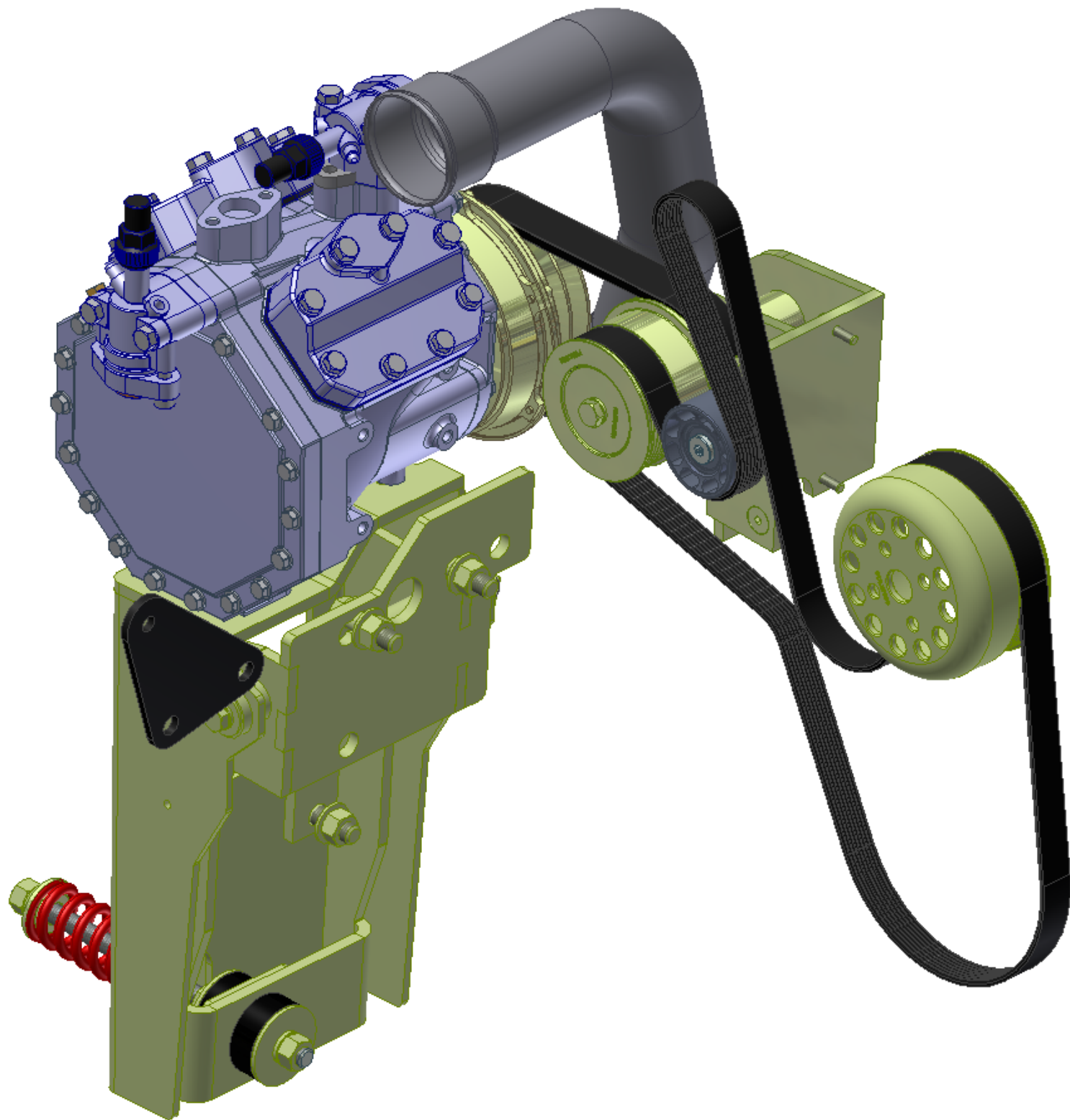
SIZE: **D** DWG NO: **KCB62503** REV: **1**

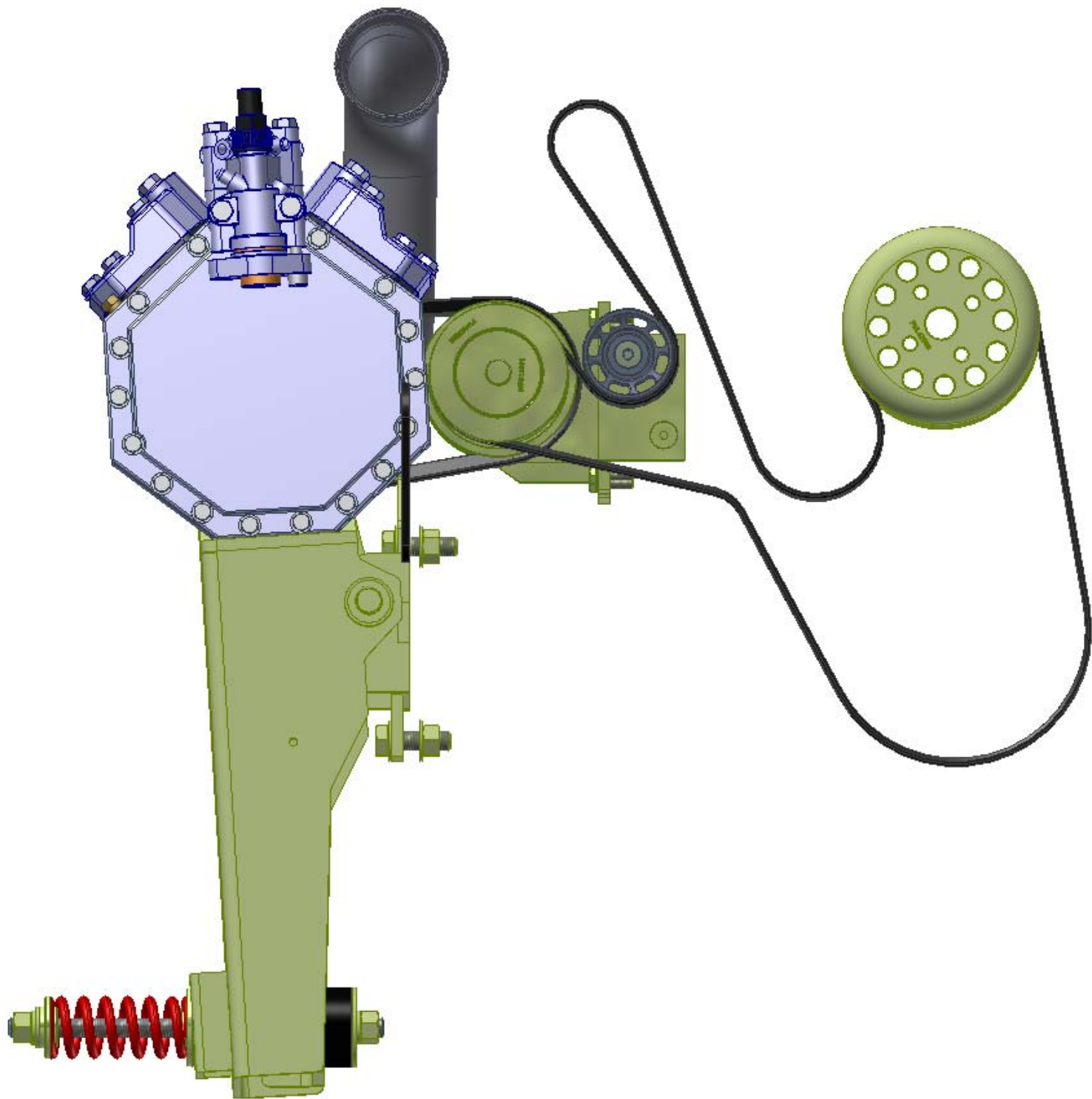
SCALE: **1:4** SHEET **1** OF **1**

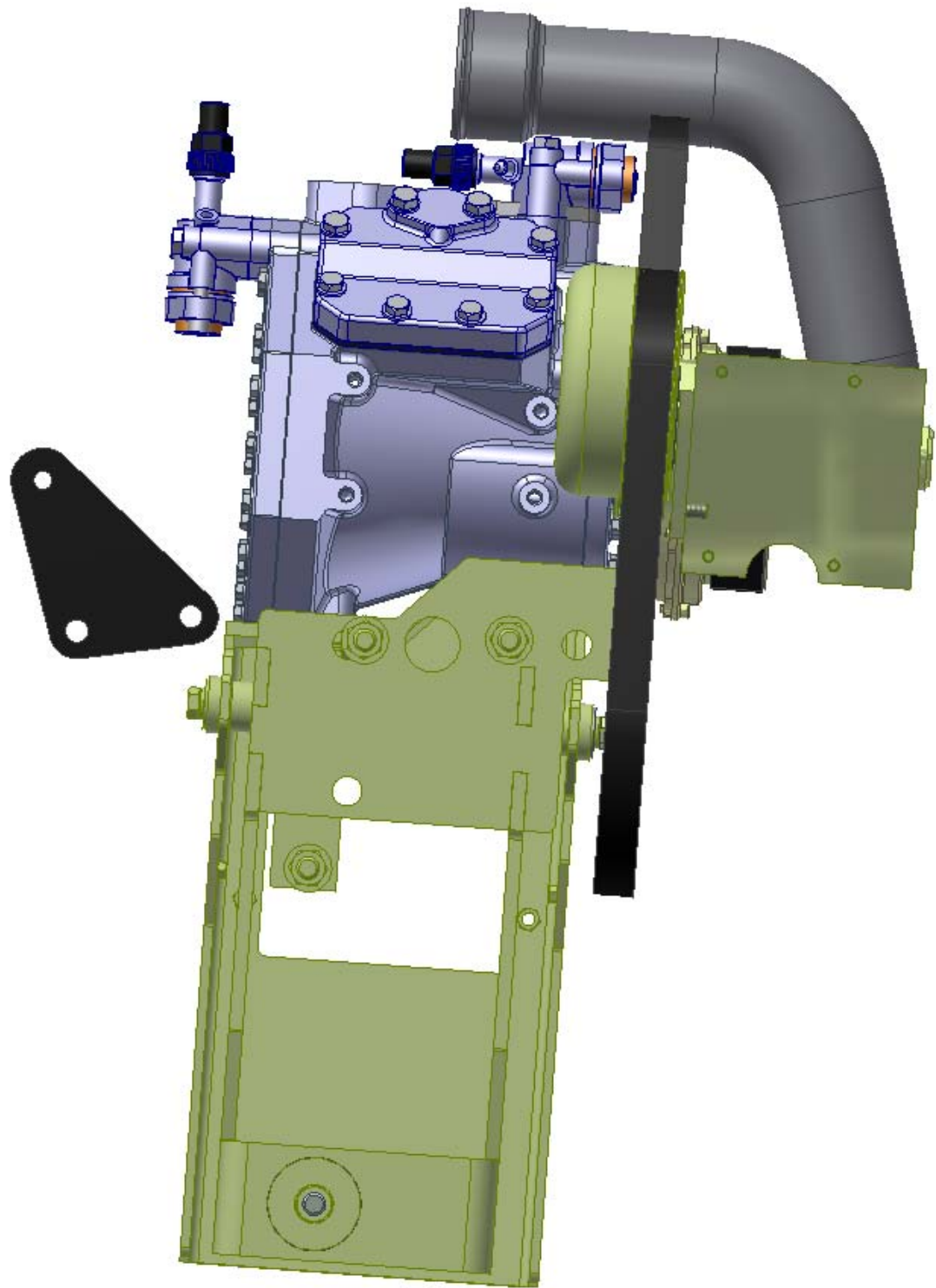
UNSPECIFIED TOLERANCES: ALL DIMS
 ONE DECIMAL PLACE (.X) .00 .010
 TWO DECIMAL PLACES (.XX) .00 .005
 THREE DECIMAL PLACES (.XXX) .00 .002
 FRACTIONAL (1/16") ANGULAR ± .25°

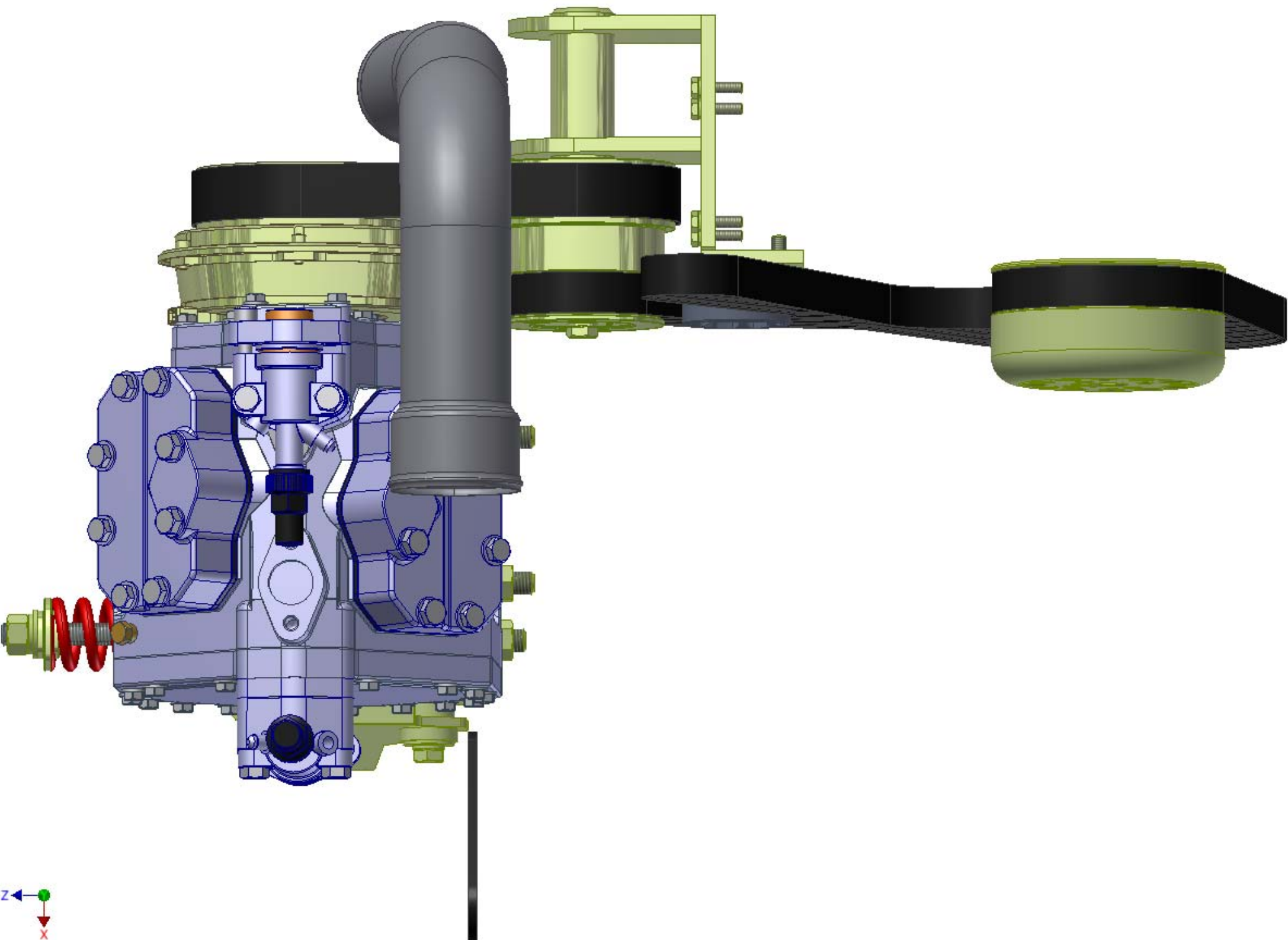
THIRD ANGLE PROJECTION

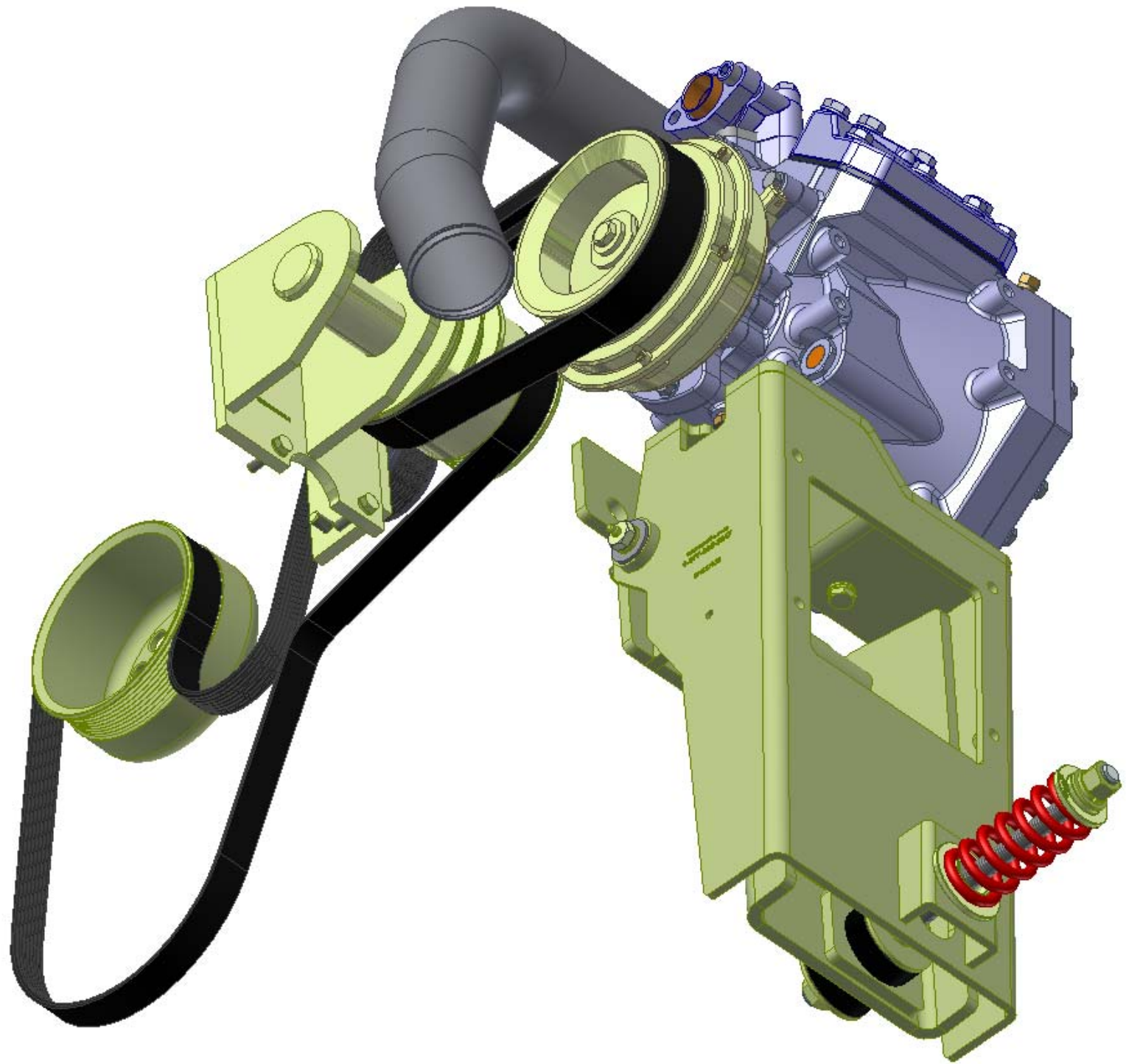
DRAWING UNIT OF MEASURE: MM (INCH)











TransArctic A/C Compressor Mount Installation Disclaimer

All compressor mounts should be installed by qualified and trained personnel using proper tools and equipment in safe working conditions following industry standard guidelines for motor vehicle service and repair.

The installer of any compressor mount purchased from TransArctic must undertake all responsibility of issues arising from that compressor bracket being installed on any vehicle. As well as insure that a **proper and sufficient ground** is established between the compressors' clutches and the vehicle's engine. Mount functionality, operation and durability can all be compromised by an incompetent installation.

Due to the many different situations, parameters and application criteria, which are beyond the compressor mount manufacturer's control, TransArctic does not warrant design, durability, or operational functionality of any compressor mount improperly installed by another party.

With no implied guarantees it is the mount installer's strict responsibility to determine safety and functionality, of the compressor mount, at the time of installation.

Please contact TransArctic with any issue arising from installation so we may better improve the product. If you have any reservations about the compressor mount integrity contact TransArctic immediately at 1-877-COLD-AIR.

Mark OEM tensioner location

Install Kit

Check for Interferences

Check to ensure that the proper OEM tensioner orientation is maintained

Run engine with A/C system engaged for at least 10 minutes to run in belt

Check OEM tensioner orientation and adjust as required

Responsabilidad limitada de TransArctic en la instalación del soporte del compresor

Todos los soportes de los compresores deben ser instalados por personas calificadas y entrenadas, usando para ello los equipos y herramientas necesarios para esta labor en buenas condiciones y según las normas y guías para el servicio y/o reparación de motores de vehículos.

El instalador de los soportes comprados en TransArctic asume toda la responsabilidad de cualquier problema que surja en el soporte del compresor al vehículo; de igual manera es responsable que el cable a tierra sea conectado entre el embrague del compresor y el motor del vehículo.

Se advierte que el buen funcionamiento y la durabilidad del soporte pueden ser comprometidos por defectos en su instalación.

Debido a las diversas situaciones que se puedan presentar fuera del control del fabricante, TransArctic no garantiza el diseño, la durabilidad o el correcto funcionamiento de cualquier equipo inapropiadamente instalado por terceros.

Esta sobreentendido que el Instalador del montaje del compresor es estrictamente responsable de la seguridad y funcionamiento del equipo en el momento de la instalación.

Si tuviera algún problema o duda acerca de la instalación del soporte del compresor pongase en contacto inmediatamente con TransArctic al teléfono 1-877-COLD-AIR de modo que podamos mejorar nuestro producto.

Note la ubicación del medidor de tensión OEM

Instale el equipo

Controlar si hay interferencias.

Asegure que el medidor de tensión mantenga la orientación justa.

Encienda el motor por lo menos 10 minutos con el sistema A/C enganchado para que la correa corra

Controle la orientación justa del medidor de tensión y ajuste a las condiciones requeridas del fabricante