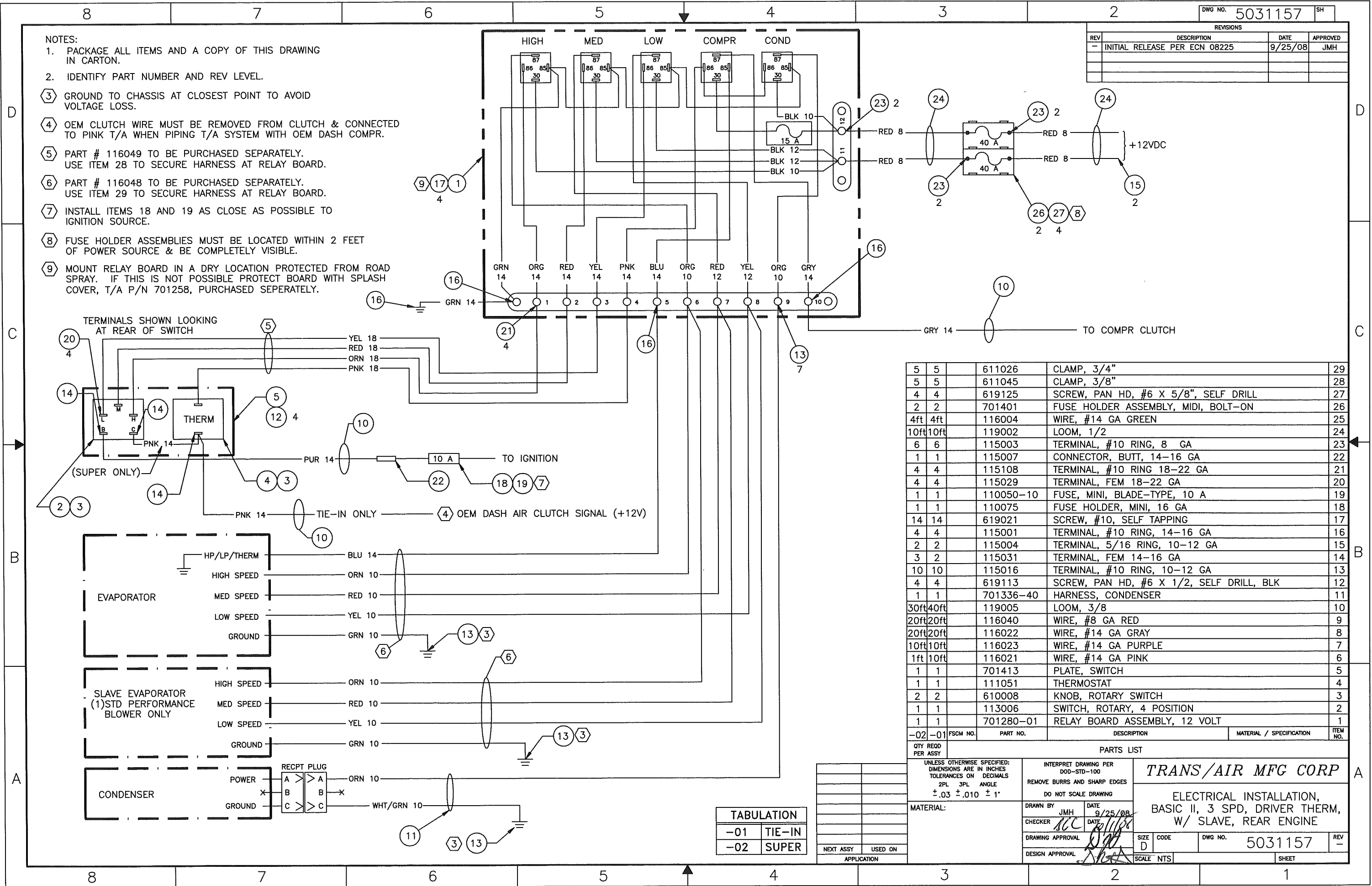


NOTES:

- 1. PACKAGE ALL ITEMS AND A COPY OF THIS DRAWING IN CARTON.
- 2. IDENTIFY PART NUMBER AND REV LEVEL.
- 3. GROUND TO CHASSIS AT CLOSEST POINT TO AVOID VOLTAGE LOSS.
- 4. OEM CLUTCH WIRE MUST BE REMOVED FROM CLUTCH & CONNECTED TO PINK T/A WHEN PIPING T/A SYSTEM WITH OEM DASH COMPR.
- 5. PART # 116049 TO BE PURCHASED SEPARATELY. USE ITEM 28 TO SECURE HARNESS AT RELAY BOARD.
- 6. PART # 116048 TO BE PURCHASED SEPARATELY. USE ITEM 29 TO SECURE HARNESS AT RELAY BOARD.
- 7. INSTALL ITEMS 18 AND 19 AS CLOSE AS POSSIBLE TO IGNITION SOURCE.
- 8. FUSE HOLDER ASSEMBLIES MUST BE LOCATED WITHIN 2 FEET OF POWER SOURCE & BE COMPLETELY VISIBLE.
- 9. MOUNT RELAY BOARD IN A DRY LOCATION PROTECTED FROM ROAD SPRAY. IF THIS IS NOT POSSIBLE PROTECT BOARD WITH SPLASH COVER, T/A P/N 701258, PURCHASED SEPARATELY.

REV	DESCRIPTION	DATE	APPROVED
-	INITIAL RELEASE PER ECN 08225	9/25/08	JMH



QTY REQD PER ASSY	FSCM NO.	PART NO.	DESCRIPTION	MATERIAL / SPECIFICATION	ITEM NO.
5	5	611026	CLAMP, 3/4"		29
5	5	611045	CLAMP, 3/8"		28
4	4	619125	SCREW, PAN HD, #6 X 5/8", SELF DRILL		27
2	2	701401	FUSE HOLDER ASSEMBLY, MIDI, BOLT-ON		26
4ft	4ft	116004	WIRE, #14 GA GREEN		25
10ft	10ft	119002	LOOM, 1/2		24
6	6	115003	TERMINAL, #10 RING, 8 GA		23
1	1	115007	CONNECTOR, BUTT, 14-16 GA		22
4	4	115108	TERMINAL, #10 RING 18-22 GA		21
4	4	115029	TERMINAL, FEM 18-22 GA		20
1	1	110050-10	FUSE, MINI, BLADE-TYPE, 10 A		19
1	1	110075	FUSE HOLDER, MINI, 16 GA		18
14	14	619021	SCREW, #10, SELF TAPPING		17
4	4	115001	TERMINAL, #10 RING, 14-16 GA		16
2	2	115004	TERMINAL, 5/16 RING, 10-12 GA		15
3	2	115031	TERMINAL, FEM 14-16 GA		14
10	10	115016	TERMINAL, #10 RING, 10-12 GA		13
4	4	619113	SCREW, PAN HD, #6 X 1/2, SELF DRILL, BLK		12
1	1	701336-40	HARNESS, CONDENSER		11
30ft	40ft	119005	LOOM, 3/8		10
20ft	20ft	116040	WIRE, #8 GA RED		9
20ft	20ft	116022	WIRE, #14 GA GRAY		8
10ft	10ft	116023	WIRE, #14 GA PURPLE		7
1ft	10ft	116021	WIRE, #14 GA PINK		6
1	1	701413	PLATE, SWITCH		5
1	1	111051	THERMOSTAT		4
2	2	610008	KNOB, ROTARY SWITCH		3
1	1	113006	SWITCH, ROTARY, 4 POSITION		2
1	1	701280-01	RELAY BOARD ASSEMBLY, 12 VOLT		1

UNLESS OTHERWISE SPECIFIED: DIMENSIONS ARE IN INCHES TOLERANCES ON DECIMALS 2PL 3PL ANGLE ±.03 ±.010 ±.1"

INTERPRET DRAWING PER DDD-STD-100 REMOVE BURRS AND SHARP EDGES DO NOT SCALE DRAWING

MATERIAL:

TRANS/AIR MFG CORP

ELECTRICAL INSTALLATION, BASIC II, 3 SPD, DRIVER THERM, W/ SLAVE, REAR ENGINE

DRAWN BY: JMh DATE: 9/25/08  
 CHECKER: ACC DATE: 10/1/08  
 DRAWING APPROVAL: [Signature]  
 DESIGN APPROVAL: [Signature]

SIZE: D CODE: Dwg NO. 5031157 REV: -

SCALE: NTS SHEET

TABULATION	
-01	TIE-IN
-02	SUPER

NEXT ASSY	USED ON