

Bill of Materials Listing

TransArctic Canada Inc.

1/27/2021
Page 1 of 1

Product Number	Date	Description	Uof M	Weight	Yield			
Line	Qty	Component Prod#	Rev#	Description	Bin	Unit	Weight	Yield
KMC65575	3/4/2008	1	1	Mt Kit, ISB, C2, 2 TM-16, '07-'10			32.30	0
5	1	PAC15110		Pack, Carton, 15" x 11" x 10", 51 ECT		each		
10	1	KRC65575		1 Kit, Retrofit, TEN00002 To TEN80007_C2		each		
20	1	BMC67012		2 Bkt, Main, Weldmt, D-S, 6.7L, ISB, C2		each		
25	1	BMS16021		0 Bkt, Tenr Arm, TM-16		each		
27	2	BMS16022		3 Bkt, TM-16 Spacer Plate, .38"	Alley	each		
30	1	PUL67001		1 Pulley, Crank, ADD-ON, Cum, ISB, 6.7, SA		each		
50	1	FSP59286		0 Spacer, Fan, Pulley, ISB, 28.6mm (1.13")	Alley	each		
55	1	FSP61905		0 Spacer, Fan, Pulley, ISB, 19.05mm (.75")		each		
100	1	KBC65575		0 Bag Kit, Fasteners, KMC65575-62060		each		

Bill of Materials Listing

TransArctic Canada Inc.

8/20/2020
Page 1 of 1

Product Number	Date	Description	Uof M	Weight	Yield	
Line	Qty	Component Prod#	Rev#	Bin	Unit	
KBC65575	4/16/2008	0 Bag Kit, Fasteners, KMC65575-62060			4.17	0
10	6	CSS12090			each	
20	1	BTC10130			each	
24	6	BTC10120			each	
26	4	BTC08110			each	
30	4	BTC10060			each	
40	5	BTC10040			each	
50	1	BTC10035			each	
70	1	CSF10051			each	
80	1	CSF06250			each	
100	4	NTA10000			each	
110	6	WFS12002	0		each	
120	13	WFA10000			each	
130	4	WFA08000			each	
140	12	WLA10000			each	
150	4	WLA08000			each	

Bill of Materials Listing

TransArctic Canada Inc.

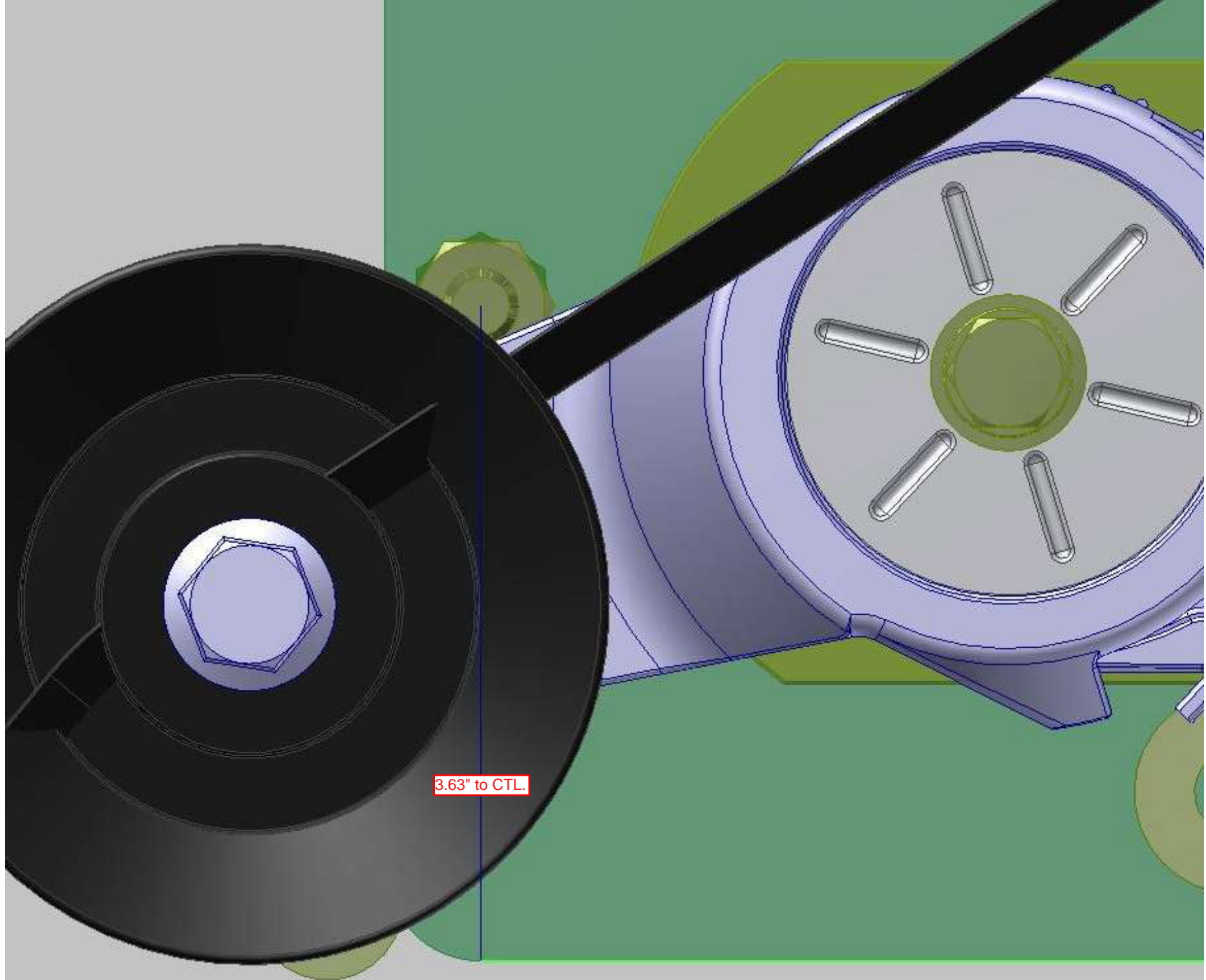
8/20/2020
Page 1 of 1

Product Number	Date	Description			Uof M	Weight	Yield	
Line	Qty	Component	Prod#	Rev#	Description	Bin	Unit	
KRC65575	12/13/2016	1	Kit, Retrofit, TEN00002 To TEN80007_C2				3.79	0
5	1	BEL11397			Belt, A gr, 1397mm (55") (17550)		each	
10	1	TEN80007			Tenr, Spring, 94mm,A gr,CW,Assy		each	
20	1	BTQ06300			Bolt, Hex, 3/8-16unc, 3.00", 8, Plt		each	
22	1	BTQ06150			Bolt, Hex, 3/8-16unc, 1.50", 8, Plt		each	
25	1	NTQ06000			Nut, Hex, 3/8-16unc, 8, Plt		each	
30	1	WFN06000			Washer, Flat, 3/8", 2, Plt		each	
40	1	WLQ06000			Washer, Lock, 3/8", 8, Plt		each	

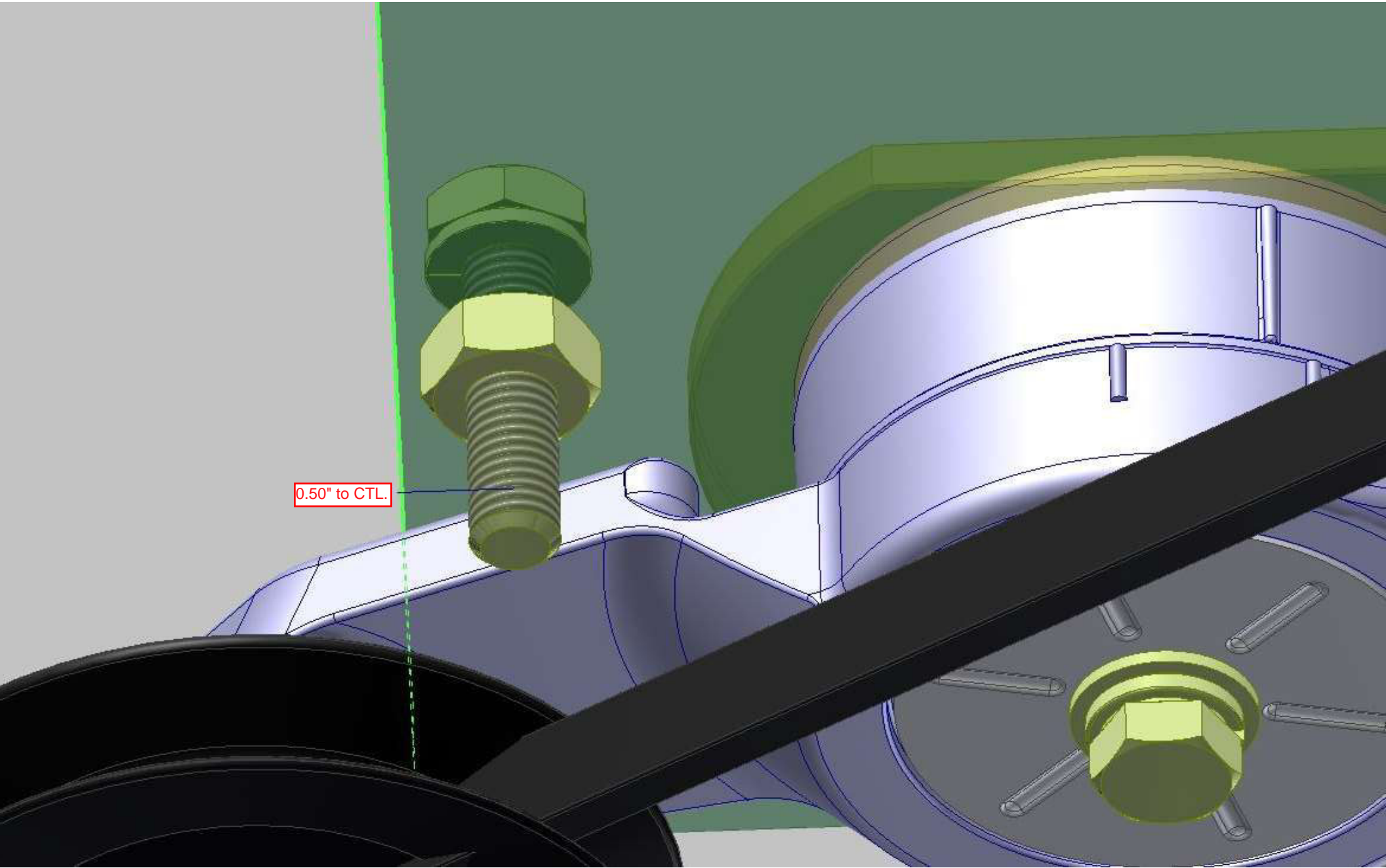
Note:

1) Also required..... (1) TMP00020 _drill template & (1) BTP06075 _3/8-16unc x 3/4" lg. bolt & (1) 31/64" (.484") drill bit.

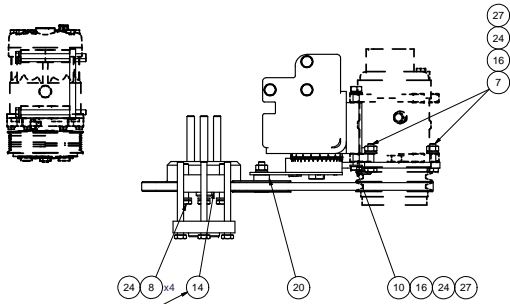
*** ONLY FOR A "STAND ALONE" RETROFIT KIT. **** (not to be included when sold along with the KMC65575 mount kit.)



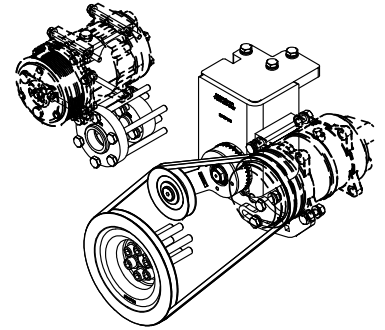
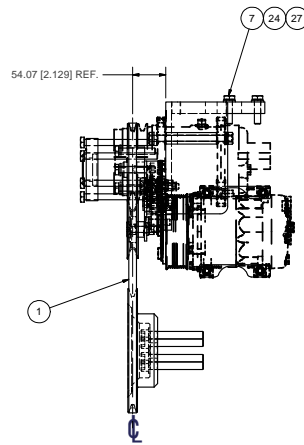
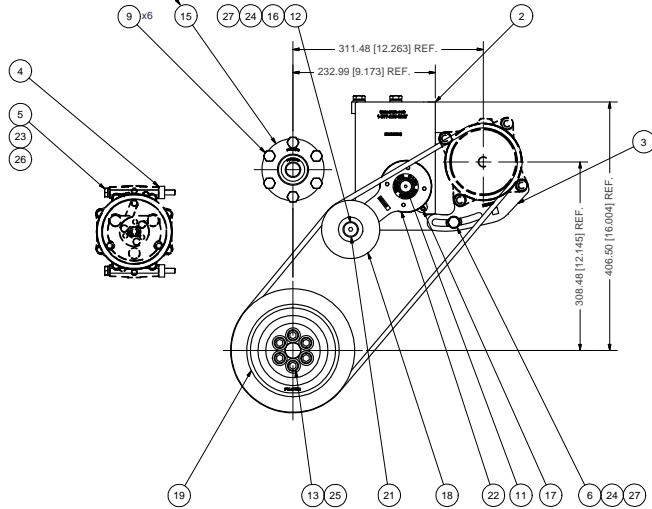
3.63" to CTL



0.50" to CTL.



NOTE:
USE APPROPRIATE
SPACER AND FASTENER
AS REQUIRED PER
INSTALLATION.



ISOMETRIC VIEW

27	12	EACH	WLA10000	WASHER, LOCK, 10mm, 8.8, PLT
26	4	EACH	WLA08000	WASHER, LOCK, 8mm, 8.8, PLT
25	6	EACH	WFS12002	WASHER, FLAT, HDN, 12mm, STL, BLK
24	13	EACH	WFA10000	WASHER, FLAT, 10mm, 8.8, PLT
23	4	EACH	WFA08000	WASHER, FLAT, 8mm, 8.8, PLT
22	1	EACH	TEN00002	TENR, SPRING, UN-DIRECT, 90D, 3/8 X 3.5"
21	1	EACH	SLV17040	SLEEVE, PULLEY, 16.90 x 14.29mm x 10.081
20	1	EACH	SCD12710	SPACER, COL, DR, 12.7mm x 25.40 x 10.321
19	1	EACH	PUL67001	PULLEY, CRANK, ADD-ON, CUM, ISB, 6.7, SA
18	1	EACH	PUL10094	PULLEY, IDLER, SA, 94D X 18W, BLK (IP-103)
17	1	EACH	PNS04010	PIN, SPRING, 1/4" D x 5/8" L
16	4	EACH	NTA10000	NUT, HEX, 10 x 1.5, 8.8, PLT
15	1	EACH	FSP61905	SPACER, FAN, PULLEY, ISB, 19.05mm (L 75")
14	1	EACH	FSP59286	SPACER, FAN, PULLEY, ISC, 28.6mm (L 113")
13	6	EACH	CSS12090	CAPSCREW, SH, 12 x 1.25 x 90mm, 12.9, PLT
12	1	EACH	CSF10051	CAPSCREW, FH, 10 x 1.5 x 50mm, 10.9, PLT
11	1	EACH	CSF06250	CAPSCREW, FH, 3/8-16 x 2.5", 9, PLT
10	1	EACH	BTC10130	BOLT, HEX, 10 x 1.5 x 130mm, 10.9, PLT
9	6	EACH	BTC10120	BOLT, HEX, 10 x 1.5 x 120mm, 10.9, PLT
8	4	EACH	BTC10060	BOLT, HEX, 10 x 1.5 x 60mm, 10.9, PLT
7	5	EACH	BTC10040	BOLT, HEX, 10 x 1.5 x 40mm, 10.9, PLT
6	1	EACH	BTC10035	BOLT, HEX, 10 x 1.5 x 35mm, 10.9, PLT
5	4	EACH	BTC08110	BOLT, HEX, 8 x 1.25 x 110mm, 10.9, PLT
4	2	EACH	BMS16022	BKT, TM-16, SPACER PLATE
3	1	EACH	BMS16021	BKT, TENR ARM, TM-16
2	1	EACH	BMC67012	BKT, MAIN, WELDMT, D-S, 6.7L, ISB, C2
1	1	EACH	BEL11397	Bolt, A gr, 1397mm (55") (17550)
ITEM	QTY	U/M	PART NUMBER	DESCRIPTION

BILL OF MATERIALS

DRAWN
Jose Rodriguez
7/22/2008



CHECKED
James Stewart
7/22/2008

TITLE

REVIEWED
James Stewart
7/22/2008

Mt Kit, ISB, 6.7L, TH C2, 2 TM-16, '07-'10

APPROVED
Ron Ingram
7/22/2008

SIZE
D

DWG NO
KMC65575

REV
1

DRAWING UNIT OF MEASURE
MM (INCH)

SCALE
1:4

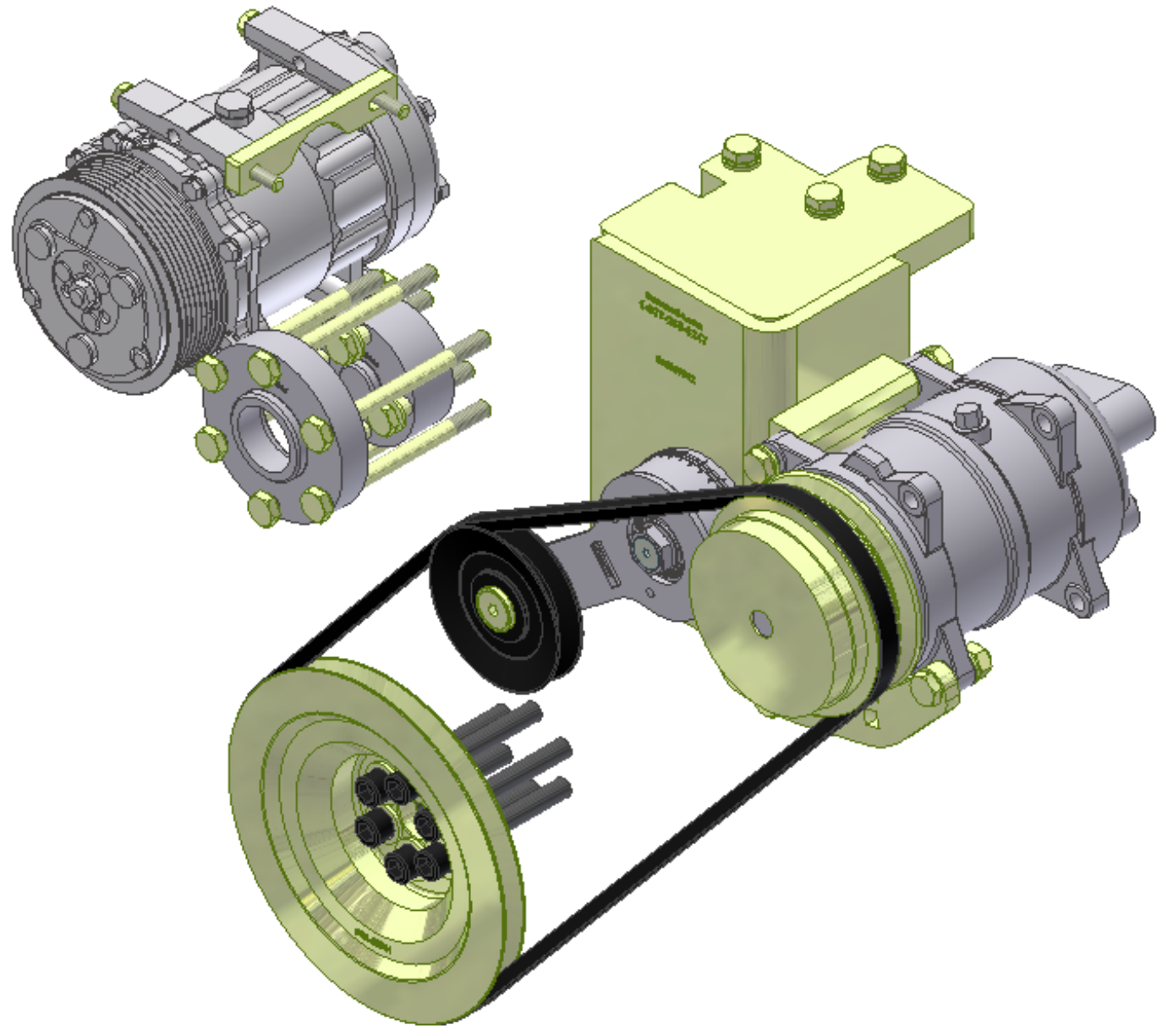
SHEET 1 OF 1

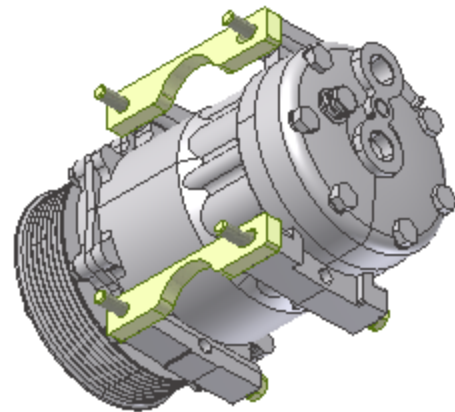
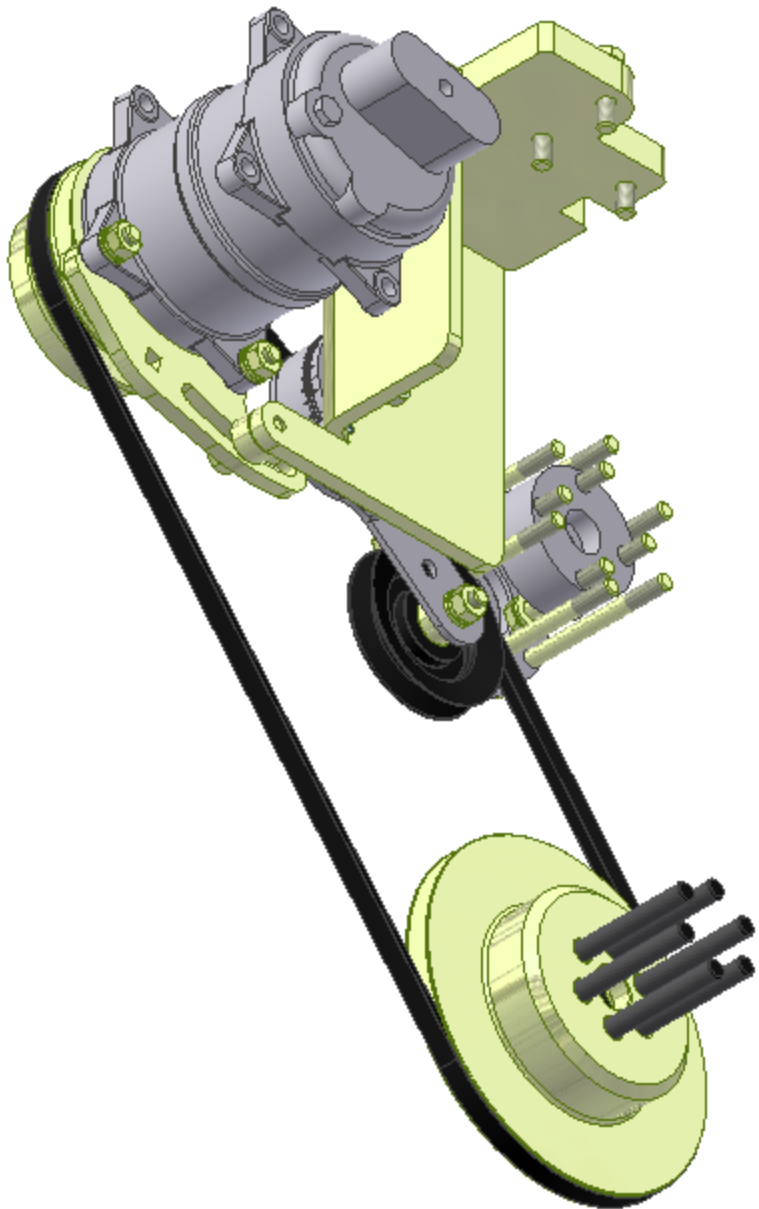
NOTES:
1) USE SERVICABLE THREADLOCKER ON ALL FASTENERS TO ENGINE COMPONENTS AND TORQUE ALL BOLTS TO S.A.E. SPECIFICATIONS.
2) SEE 'TRANSARGTIG A/C COMPRESSOR MOUNT INSTALLATION DISCLAIMER'.

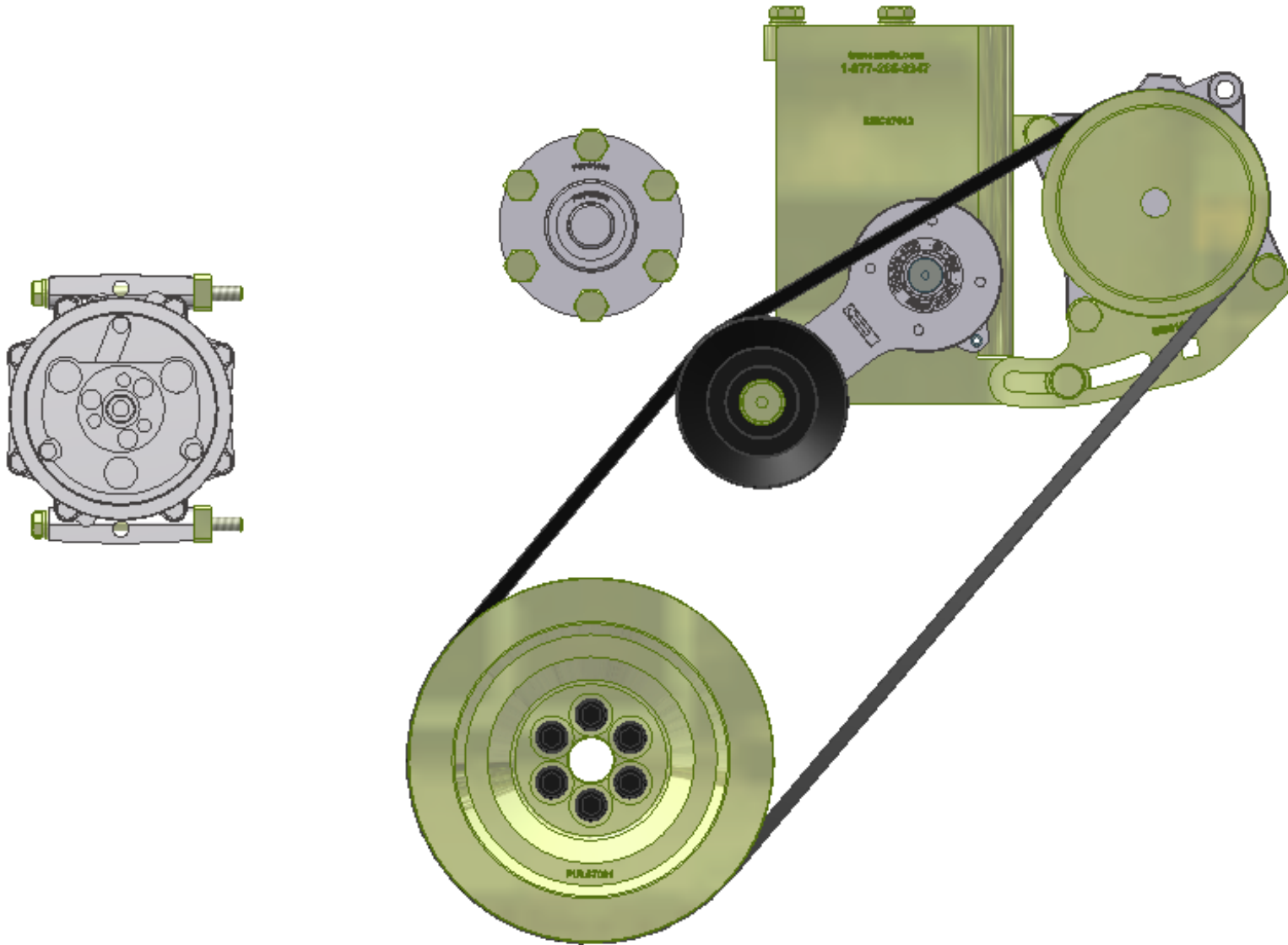
1	CORRECTED INFO IN BOM+TB	8/22/2011	VAL
0	RELEASED TO PRODUCTION	7/22/2008	RR
REV	DESCRIPTION	DATE	BY
1	James Stewart	7/22/2008	GA
2	James Stewart	7/22/2008	GA
3	Ron Ingram	7/22/2008	MFG
4	Dale Mason	7/22/2008	APPROVED
UNSPECIFIED TOLERANCES:			
ONE DECIMAL PLACE (X.0)	0.1	FR	
TWO DECIMAL PLACE (X.00)	0.005	FR	
THREE DECIMAL PLACE (X.000)	0.0005	FR	
FRACTIONAL (X.125)	1/32	FR	
ANGULAR (X.5)	1/16	FR	



THIRD ANGLE PROJECTION







TransArctic A/C Compressor Mount Installation Disclaimer

All compressor mounts should be installed by qualified and trained personnel using proper tools and equipment in safe working conditions following industry standard guidelines for motor vehicle service and repair.

The installer of any compressor mount purchased from TransArctic must undertake all responsibility of issues arising from that compressor bracket being installed on any vehicle. As well as insure that a **proper and sufficient ground** is established between the compressors' clutches and the vehicle's engine. Mount functionality, operation and durability can all be compromised by an incompetent installation.

Due to the many different situations, parameters and application criteria, which are beyond the compressor mount manufacturer's control, TransArctic does not warrant design, durability, or operational functionality of any compressor mount improperly installed by another party.

With no implied guarantees it is the mount installer's strict responsibility to determine safety and functionality, of the compressor mount, at the time of installation.

Please contact TransArctic with any issue arising from installation so we may better improve the product. If you have any reservations about the compressor mount integrity contact TransArctic immediately at 1-877-COLD-AIR.

Mark OEM tensioner location

Install Kit

Check for Interferences

Check to ensure that the proper OEM tensioner orientation is maintained

Run engine with A/C system engaged for at least 10 minutes to run in belt

Check OEM tensioner orientation and adjust as required

Responsabilidad limitada de TransArctic en la instalación del soporte del compresor

Todos los soportes de los compresores deben ser instalados por personas calificadas y entrenadas, usando para ello los equipos y herramientas necesarios para esta labor en buenas condiciones y según las normas y guías para el servicio y/o reparación de motores de vehículos.

El instalador de los soportes comprados en TransArctic asume toda la responsabilidad de cualquier problema que surja en el soporte del compresor al vehículo; de igual manera es responsable que el cable a tierra sea conectado entre el embrague del compresor y el motor del vehículo.

Se advierte que el buen funcionamiento y la durabilidad del soporte pueden ser comprometidos por defectos en su instalación.

Debido a las diversas situaciones que se puedan presentar fuera del control del fabricante, TransArctic no garantiza el diseño, la durabilidad o el correcto funcionamiento de cualquier equipo inapropiadamente instalado por terceros.

Esta sobreentendido que el Instalador del montaje del compresor es estrictamente responsable de la seguridad y funcionamiento del equipo en el momento de la instalación.

Si tuviera algún problema o duda acerca de la instalación del soporte del compresor pongase en contacto inmediatamente con TransArctic al teléfono 1-877-COLD-AIR de modo que podamos mejorar nuestro producto.

Note la ubicación del medidor de tensión OEM

Instale el equipo

Controlar si hay interferencias.

Asegurese que el medidor de tensión mantenga la orientación justa.

Encienda el motor por lo menos 10 minutos con el sistema A/C enganchado para que la correa corra

Controle la orientación justa del medidor de tensión y ajuste a las condiciones requeridas del fabricante